



The Smartest Network Device

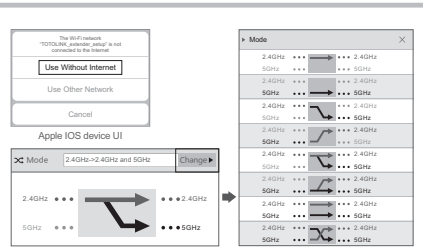
# Quick Installation Guide

## Wireless AC Range Extender

Model : EX1200M

V1.1710

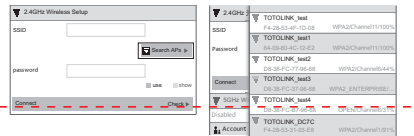
Copyright © 2017 TOTOLINK, All Rights Reserved.  
Website: <http://www.totolink.net>  
Information in this document is subject to change without prior notice.



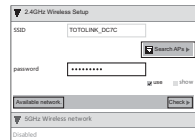
### Band modes for switching frequency ranges

Modes	Description
2.4G →2.4G	Work with both the wireless router and client devices in 2.4G network.
5G →5G	Work with both the wireless router and client devices in 5G network.
2.4G →5G	Work with the wireless router in 2.4G network and client devices in 5G network.
5G →2.4G	Work with the wireless router in 5G network and client devices in 2.4G network.
2.4G →2.4G&5G (Default)	Work with the wireless router in 2.4G network and client devices in 2.4G & 5G networks.
5G →2.4G&5G	Work with the wireless router in 5G network and client devices in 2.4G & 5G networks.
2.4G&5G→2.4G&5G (Parallel)	Work with the wireless router in 2.4G & 5G networks and client devices in the corresponding network.
2.4G&5G→2.4G&5G (Crossed)	Work with the wireless router in 2.4G & 5G networks and client devices in the 5G & 2.4G respectively.

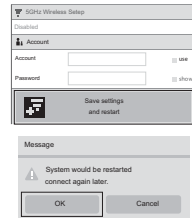
1 Touch "Search APs" to search for 2.4G networks within the range according to default 2.4G band mode. You can also manually change it if required.



5 In the "Password" field, type the network password, and then touch "Check". If the message "Available network" is shown below, it means that the SSID and password are verified correctly and that you can continue with the following steps.

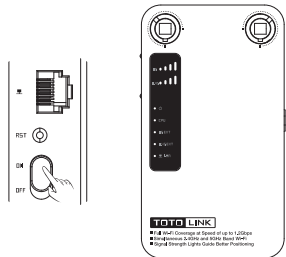


6 Touch "Save settings and restart" at the bottom, and then "OK". This will reboot the extender. It may take a minute, please wait. A message appears to show you the Wi-Fi settings of the extended wireless router.



## 1 Quick setup for EX1200M

1 Place the Extender within the range of your wireless router, plug it into an electrical outlet, and then move the toggle switch to "ON" position. The Power LED turns solid on.



2 Use any wireless network manager utility on your cell phone to find and connect to the Extender wireless network name (SSID) "TOTOLINK\_extender\_setup".

#### Note:

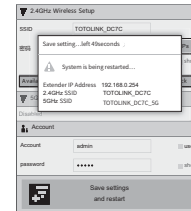
\* The SSID may be too long and are only partially displayed. Try to touch them to view their full names.

3 After the wireless connection is established, a browser from your cell phone should automatically open and take you directly to the on-screen setup guide. Touch "Change" to set the Extender to a band mode as needed. The default mode is "2.4G→2.4G&5G", which is used to set up the Extender in this manual.

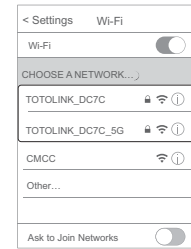
#### Note:

\* You can also use the default IP address 192.168.254.1 in a browser to access the Extender network setup guide after you connect the SSID.  
\* To prevent Web connection failure between the Extender and your Apple iOS device, touch the message "Don't connect to the Internet".

## 1 Quick setup for EX1200M



1 After the Extender restarts, its original SSIDs won't display on your cell phone. Use your device to find and connect to the new extended network with the same Wi-Fi SSID and password that you use for the wireless router.



## 2 Adjust the position of the Extender

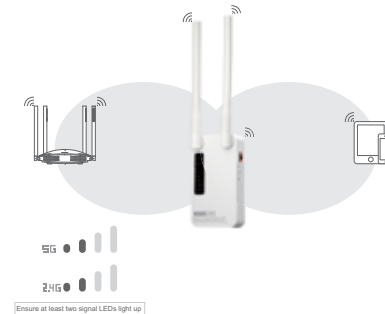
1 As long as the setup on the Extender is finished, it won't change unless you perform the reset operation. You can move it to another place within the wireless range and experience the extended distance of your Wi-Fi network.

2 In order to get a better effect of the signals' extending, please ensure there are at least two signal LEDs light up. Otherwise, please adjust the position of the extender.

#### Note:

\* Place the Extender in an open space, and keep the number of walls and ceilings between to a minimum.

\* Keep away from electrical devices that are potential sources of electromagnetic interference, including microwaves, Bluetooth devices, or other 2.4 GHz household appliances.



## 3 Specifications

Standards	IEEE802.11ac, IEEE802.11n, IEEE 802.11n, IEEE 802.11g, IEEE 802.11b, IEEE 802.3, IEEE 802.3u, IEEE 802.3x
Port	1 *10/100Mbps RJ-45 port
Power	AC 100V~240V / 50~60Hz
Button	5GHz WPS button, 2.4GHz WPS button, Power ON/OFF toggle switch, RST button
LEDs	2.4G signal LED, 5G signal LED, Power LED, CPU LED, 5G EXT LED, 2.4G EXT LED, LAN LED
Antenna	2 * external 5dBi fixed antennas
Dimension (W x H x D)	4.6" x 2.6" x 2.6"
Frequency range	2.4GHz/5GHz
Wireless Speed	2.4GHz: 300Mbps / 5GHz: 867Mbps
Advanced tools	Cell phone UI and APP
Environment	Working environment : 32°F~122°F (0 ~50 °C), 10%~90% (Non-condensing) Storage environment: -40°F~158°F (-40 ~70 °C), 5%~90% (Non-condensing)

### LEDs description

LEDs	Description
● ○	Solid on: the power is on. Off: the power is off.
● CPU	Flash every two seconds: the Extender is working properly. Solid on: it lasts for 2 minutes when WPS button is pressed. Flash quickly: when the reset process is being proceeded.
● 5G EXT	Solid on: the Extender is exchanging 5G data with the wireless router. Off: no 5G data is being transmitted between the Extender and the wireless router.
● 2.4G EXT	Solid on: the Extender is exchanging 2.4G data with the wireless router. Off: no 2.4G data is being transmitted between the Extender and the wireless router.
5G	5G signal LEDs: The number of 5 LEDs indicates the wireless signal strength in 5G network between the Extender and the wireless router. The strength increases with the number of lit LEDs.
2.4G	2.4G signal LEDs: The number of 4 LEDs indicates the wireless signal strength in 2.4G network between the Extender and the wireless router. The strength increases with the number of lit LEDs.

### FCC warning:

This device complies with Part 15 of the FCC Rules. Operation is subject to the following two conditions: (1) this device may not cause harmful interference, and (2) this device must accept any interference received, including interference that may cause undesired operation.  
changes or modifications not expressly approved by the party responsible for compliance could void the user's authority to operate the equipment. NOTE: This equipment has been tested and found to comply with the limits for a Class B digital device, pursuant to Part 15 of the FCC Rules. These limits are designed to provide reasonable protection against harmful interference in a residential installation. This equipment generates, uses and can radiate radio frequency energy and, if not installed and used in accordance with the instructions, may cause harmful interference to radio communications. However, there is no guarantee that interference will not occur in a particular installation. If this equipment does cause harmful interference to radio or television reception, which can be determined by turning the equipment off and on, the user is encouraged to try to correct the interference by one or more of the following measures:  
→ Reorient or relocate the receiving antenna.  
→ Increase the separation between the equipment and receiver.  
→ Connect the equipment into an outlet on a circuit different from that to which the receiver is connected.  
→ Consult the dealer or an experienced radio/TV technician for help.  
RF Exposure Statement  
This equipment complies with FCC radiation exposure limits set forth for an uncontrolled environment. This transmitter must not be co-located or operating in conjunction with any other antenna or transmitter. This equipment should be installed and operated with minimum distance 20cm between the radiator & your body.

## 4 FAQ

Q1: What are the additional two wireless network names "TOTOLINK\_extender\_5G" except for "TOTOLINK\_extender\_setup"?

A1: You can use these two SSIDs to connect to the Extender wireless network and login for advanced settings through the IP address 192.168.0.254 in the browser from your cell phone or computer.

Q2: When setting the Extender to connect to the wireless router, what should I do if I want to use the new SSID and password for the extended network instead of the original ones of the router?

A2: You can connect your cell phone or computer to the Extender network using the SSIDs "TOTOLINK\_extender" and "TOTOLINK\_extender\_5G" and type the IP address 192.168.0.254 in your browser for login.

Q3: If I want to change the Extender to extend another Wi-Fi network within the range but cannot access its configuration page now, what should I do?

A3: Restore the Extender to its factory defaults and then start configuration as needed. To reset the Extender, stick a paper clip into the side panel "RST" hole and hold it for over 5 seconds until the CPU LED flashes quickly.



Scan the QR code to download our cell phone App for quick setup.