

**TOTOLINK**  
The Smartest Network Device

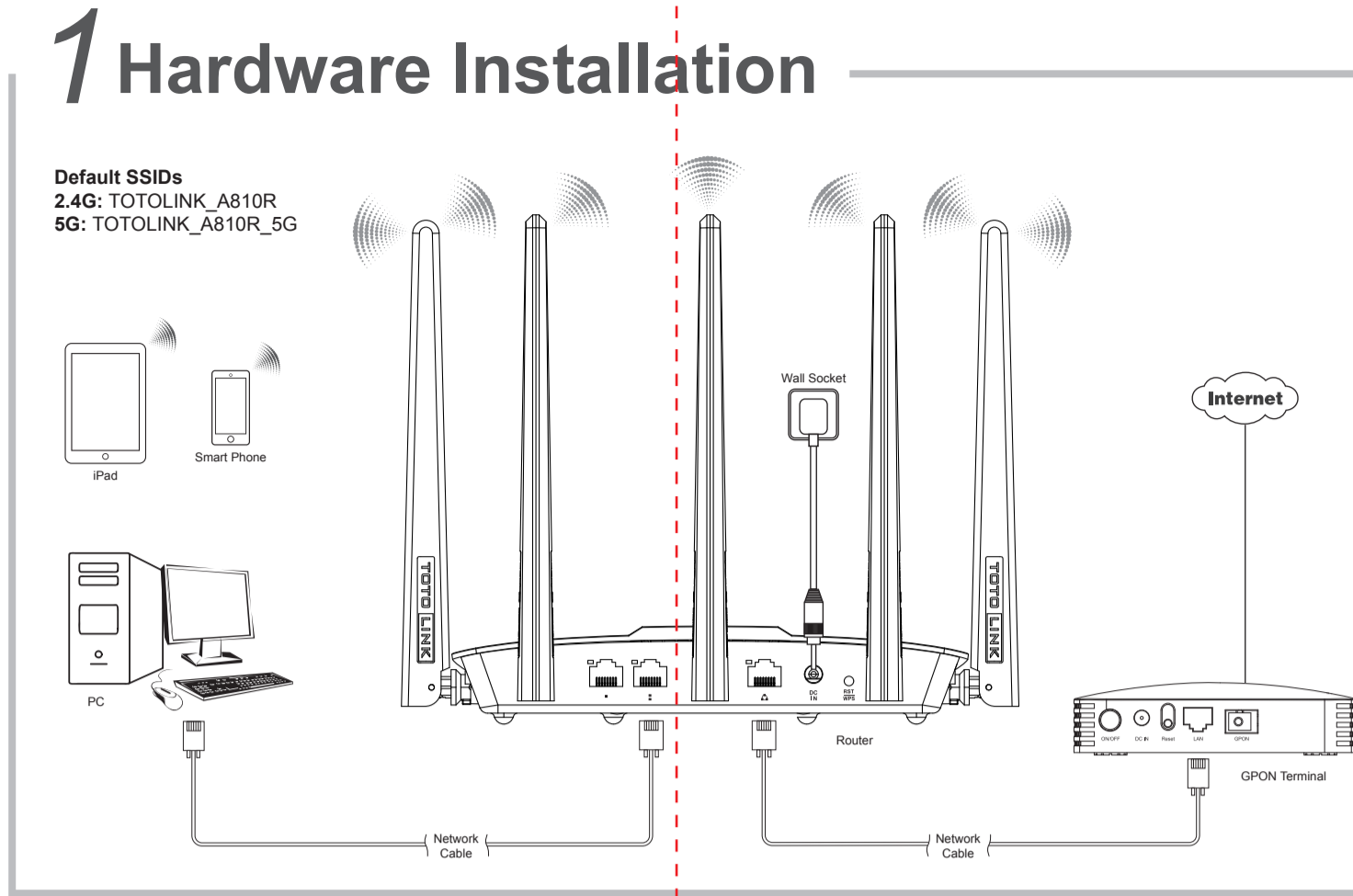
## Quick Installation Guide

### AC1200 Wireless Dual Band Router

Models: A810R, IP04347

Copyrights © 2017 TOTOLINK. All Rights Reserved. Website: <http://www.totolink.net>  
Information in this document is subject to change without prior notice.

V1.0 | 2017.11.30 (Take A810R as an example)



### LEDs

|                   |                        |  |
|-------------------|------------------------|--|
| CPU (Front panel) | On                     | The power is on.   |
|                   | Blink every one second | The router finishes the booting process and is working normally.           |
|                   | Blinking quickly       | When the reset process is being proceeded.                                 |
| WAN               | On                     | The WAN port is connected to an Ethernet port on a Modem or the wall.      |
|                   | Off                    | The WAN port is disconnected from an Ethernet port on a Modem or the wall. |
|                   | Blinking               | The WAN port is sending or receiving data.                                 |
| LAN               | On                     | The LAN 1/2 port is connected to a computer.                               |
|                   | Off                    | LAN 1/2 port is disconnected from a computer.                              |
|                   | Blinking               | LAN 1/2 port is sending or receiving data.                                 |

### Ports and button

|                |  |
|----------------|--|
| DC IN port     | Connect to an electrical outlet with the supplied power adapter.   |
| LAN 1/2 port   | Connect to PCs or switches with Ethernet cables.   |
| WAN port       | Connect to an Ethernet port on a Modem or the wall for Internet access.  |
| RST/WPS button | <b>Enable WPS function:</b> when the router is powered on, press and hold this button for 1-3 seconds until the front panel CPU LED turns solid on.<br><b>Reset to factory defaults:</b> when the router is powered on, press and hold for 5 seconds or more until the CPU LED blinks quickly. |

# 2 Configure the Router

- Run any Web browser. Enter **192.168.0.1** in the address bar.

- Enter **admin** for both **User Name** and **Password**, then click **LOGIN**.

- Now you can see the **Easy Setup** page. All basic settings could be done here, including **Internet Settings** and **5GHz & 2.4GHz Wireless Settings**.

**Internet Setting**

Connection Status: Connected  
Connection Type: DHCP

**5G Wireless**

Radio On/Off: Enable  
Network Name (SSID): TOTOLINK\_A810R\_5G  
Encryption: Disable  
Recommend Encryption: WPA2-PSK

**2.4G Wireless**

Radio On/Off: Enable  
Network Name (SSID): TOTOLINK\_A810R  
Encryption: Disable  
Recommend Encryption: WPA2-PSK

4 **Internet Settings.** **Connection Status** shows physical connection of router's WAN port. Choose one **Connection Type** according to your ISP (Internet Service Provider).

| NO. | Connection Type | Description   |
|-----|-----------------|---|
| A   | DHCP            | No configuration, simply connect the WAN port to existing Ethernet port by cable.                           |
| B   | Static IP       | You're required to enter IP Address, Subnet Mask, Default Gateway and DNS information provided by your ISP. |
| C   | PPPoE           | You're required to enter User Name and Password provided by your ISP.                                       |

A. **DHCP.** After choose **DHCP**, you can go on with the **5GHz & 2.4GHz Wireless Settings**.

**NOTE:**

- Please disconnect the power adapter and all cables during thunderstorm weather;
- Keep away from heat source and keep well ventilated;

- Please pay attention to the waterproofing and moisture-proof when storing, transporting and running.
- Please use the power adapter provided with the router.

B. **Static IP.** If you choose **Static IP**, please enter **IP Address**, **Subnet Mask**, **Default Gateway** and **DNS** information provided by your ISP.

C. **PPPoE.** If you choose **PPPoE**, please enter the **User Name** and **Password** provided by your ISP.

# 2 Configure the Router

- 5G Wireless Settings.** You could customize your 5GHz wireless **Network Name (SSID)** and **Password**. The **WPA/WPA2-PSK** is recommended for **Encryption**.

- 2.4G Wireless Settings.** Verify or change your 2.4GHz wireless **Network Name (SSID)** and **Password**. The **WPA/WPA2-PSK** is recommended for **Encryption**. Click **Apply**.

- Wait for a few seconds, the router's **Status** interface turns up, showing all connection information.

**NOTE:**

We recommend that you remember your Wi-Fi network name and password for future use.

**Enable WPS function:** when the router is powered on, press and hold this button for 1-3 seconds until the front panel CPU LED turns solid on.  
**Reset to factory defaults:** when the router is powered on, press and hold for 5 seconds or more until the CPU LED blinks quickly.

# 3 Connect Wireless Network

After router settings, please follow below steps to connect wireless network:

- Click or on the right bottom of your desktop:

- Choose the SSID that you have set on **Configure the Router**. Enter correct password. Click **Connect** or **Next**.

# 3 Connect Wireless Network

- Wireless network connected. Enjoy your Wi-Fi.

For Mobile device users, please go to **Settings—Wi-Fi** to connect wireless network.

• For more information, go to [www.totolink.net](http://www.totolink.net).

# 4 FAQ (Frequently Asked Questions)

- What can I do if the login page does not appear?**
  - Check your computer's IP address, make sure it is set to "Obtain an IP address automatically". Steps: right click **Network—Properties—Change adapter settings—Local Area Connection—Properties—Internet Protocol Version 4 (TCP/IPv4)**.
  - Make sure you enter the correct default access: **192.168.0.1**. Try again.
  - Use another web browser and try again.
  - Reboot your router and try again.
- What can I do if I cannot access the Internet?**
  - Check the Internet status by connecting a computer directly to the modem via Ethernet cable. If it is not working properly, contact your Internet Service Provider.
  - Setup your router again according to part 2 **Configure the Router**.
  - Reboot your cable modem (if have) and router, then try again.
- How to reset the router to factory default Settings?**

Keep the router powered on, press and hold the RST/WPS button for 5 seconds or more until the front panel CPU LED blinks quickly. It will restore to factory default settings.
- What can I do if I forget the router's Web login User Name and Password?**

In case you changed your router's Login User Name and Password, we suggest you reset your router to factory default settings by above operations. Then use the following parameters to login the router's Web interface: **Default IP address: 192.168.0.1, User Name: admin, Password: admin**
- What can I do if I forget my wireless network Password?**

By default, TOTOLINK router don't have any wireless network password. If you have set one, please log in to router's Web Management page, go to **5G Wireless—Basic Settings** or **2.4G Wireless—Basic Settings** to obtain or reset your password.

# 5 FCC warning

This device complies with Part 15 of the FCC Rules. Operation is subject to the following two conditions:

- (1) this device may not cause harmful interference, and (2) this device must accept any interference received, including interference that may cause undesired operation. changes or modifications not expressly approved by the party responsible for compliance could void the user's authority to operate the equipment.

**NOTE:**

This equipment has been tested and found to comply with the limits for a Class B digital device, pursuant to Part 15 of the FCC Rules. These limits are designed to provide reasonable protection against harmful interference in a residential installation. This equipment generates, uses and can radiate radio frequency energy and, if not installed and used in accordance with the instructions, may cause harmful interference to radio communications. However, there is no guarantee that interference will not occur in a particular installation. If this equipment does cause harmful interference to radio or television reception, which can be determined by turning the equipment off and on, the user is encouraged to try to correct the interference by one or more of the following

**Measures:**

- Reorient or relocate the receiving antenna.
- Increase the separation between the equipment and receiver.
- Connect the equipment into an outlet on a circuit different from that to which the receiver is connected.
- Consult the dealer or an experienced radio/TV technician for help.

**FCC Radiation Exposure Statement:**  
This equipment complies with FCC radiation exposure limits set forth for an uncontrolled environment. This transmitter must not be co-located or operating in conjunction with any other antenna or transmitter. This equipment should be installed and operated with minimum distance 20cm between the radiator & your body.

5150-5250MHz is restricted for indoor use only in all EU member states.

|    |    |    |    |    |    |    |
|----|----|----|----|----|----|----|
| AT | BE | CY | CZ | DK | EE | FI |
| FR | DE | EL | HU | IE | IT | LV |
| LT | LU | MT | NL | PL | PT | SK |
| SI | ES | SE | UK | BG | RO | HR |