

# BonSayOn Product Manual

Preface .....	1
Introduction .....	1
Caution .....	1
Description .....	2
Specification .....	3
Wear the Glasses .....	4
Adjusting the Nose Pad .....	5
Chang the Lenses .....	6
Illustration of Button Function .....	7
Pairing .....	7
How to use .....	8
Dual Pairing .....	9
Table of Operation .....	10
Instruction of Battery Charge .....	11
Q&A .....	12
Product Service .....	14
Electromagnetic safety .....	14

## Preface

BonSayOn products are proudly produced with high tech and fashion merged together. Please read the manual in details for using correctly and comfortably.

## Introduction

Completely different from the conventional microphone which picks up the sound or voice through air, BonSayOn products adopt the newly developed nasal bone conduction microphone by picking up the sound through bone or solid material, instead of air.

Through high-quality Bluetooth communication, the speaker's voice sensed by the nasal bone conduction chip is quite clear like face-to-face talking with whom you are familiar. The most outstanding feature is that no or little background noise is added into the human voice. The clear conversation through BonSayOn products always never stops in any noisy environment. Please enjoy the noiseless communication with BonSayOn fashion products.

## Caution

1. This product is humidity-proof, but not water-proof or dust-proof. Do not use it in water or dust environment to avoid the damage as well as shortening the lifetime of the product.
2. Temperature range : -10°C~50°C
3. In order to guarantee communication quality, do not cover the product with metal.
4. For the sake of product surface and accessories intact, please avoid rubbing the product with hard objects.

5. Please adopt the qualified accessories which have authenticated by NeoVictory Company so as to ensure smooth and normal operation.
6. All accessories have been officially certified. In order to guarantee the product functioning normally, please do not use the accessories not officially certified.
7. When using the earphone, your can not access outside sound very well. Do not use the earphone where it can endanger your safety.

## **Description**

### **Sunglasses**

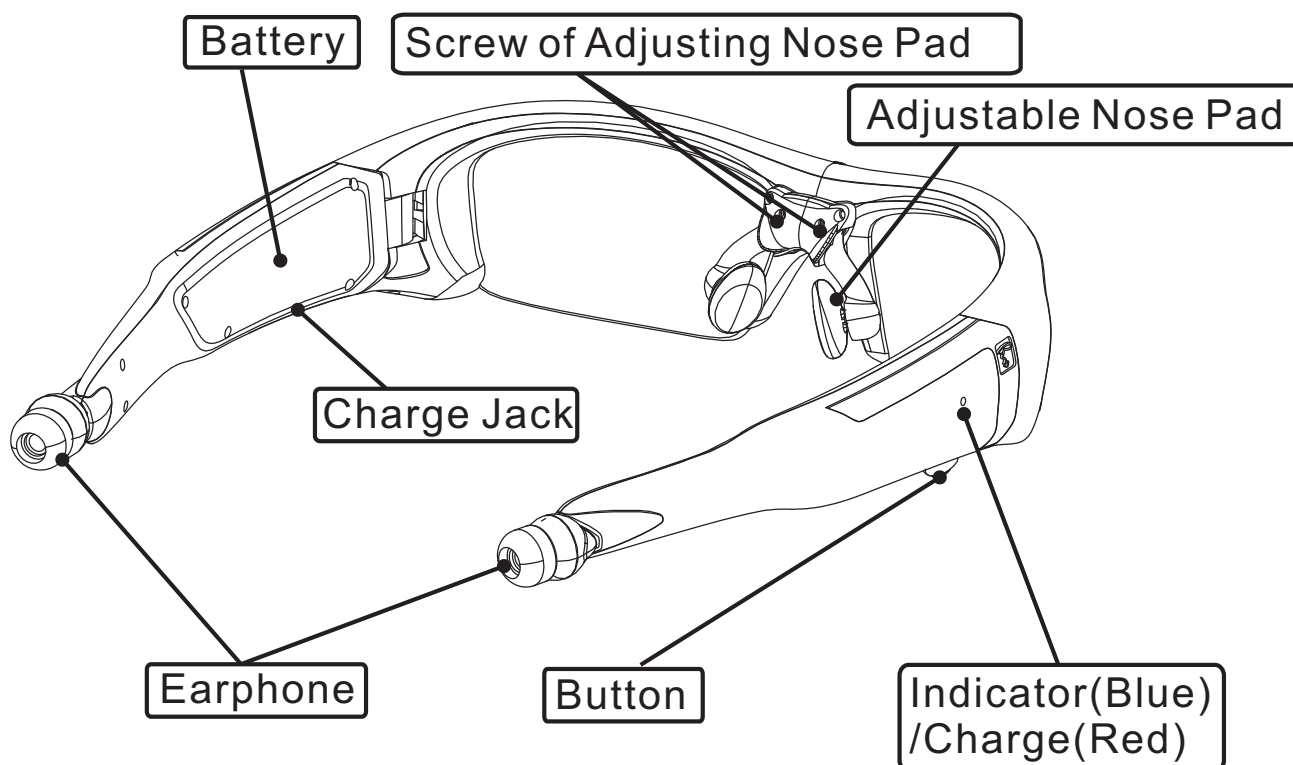
- ⊙ Anti-UV 400
- ⊙ Fit safety standards (CNS15067)

### **Bluetooth**

- ⊙ V 2.1+EDR, Standby : about 50 hours, Talking : about 6 hours, Music: about 5 hours.
- ⊙ Bluetooth connection to mobile phone and computer for music, MSN, Skype.
- ⊙ Support A2DP for superior quality music play.
- ⊙ Communication range : 10 meter (Barrier-free)

### **Nasal bone conduction microphone**

- ⊙ Touch nose, small and smooth.
- ⊙ Special adjustable nose pad design for wearing comfort.



## Specification

<b>Microphone type</b>	NeoV Nasal bone conduction microphone Version 2.0
<b>Bluetooth standard</b>	Bluetooth V2.1+EDR with A2DP function
<b>Bluetooth operation mode</b>	High-quality sound output (A2DP:Advanced Audio Distribution Profile) Hand-free Profile
<b>Transmission range</b>	2.402GHz~2.480GHz, Max:10meter (Barrier-free)
<b>Earphone</b>	32Ω X 2, Output:10mW
<b>Battery</b>	Li-polymer Battery (190mA/3.7V) , charge time: about 2hours.

<b>Music play time</b>	About 5 hours
<b>Talk time</b>	About 6 hours
<b>Idle</b>	About 50 hours
<b>Size</b>	170mmX155mmX45mm
<b>Weight</b>	68g
<b>Operation condition</b>	-10°C~50°C , humidity 0~90%
<b>Battery charger standard</b>	Input: AC 110/220V 50/60Hz Output: DC 5V MAX 0.6A

**Standard accessories** Manual, Battery charger, Warranty, Cleaning potch, Ear plug(three specs), Indoor and night drive lens, screwdriver

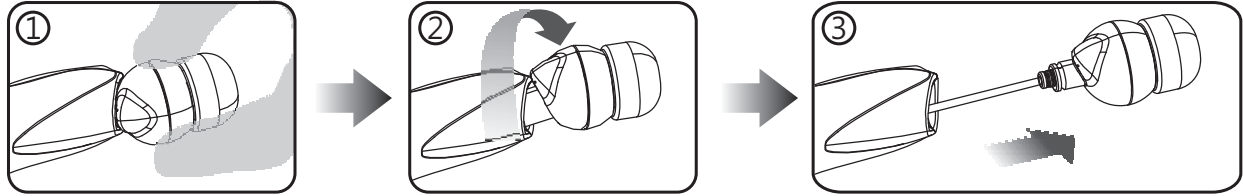
## Wear the Sunglasses

1. Put on the sunglasses and adjust them to your comfort.
2. Adjust the nose pads to fit the nose for high quality communication and a low amount of background noise while using this product.  
(Refer to the Adjust the Nose Pads section)



3. Pull out the earphone to get a suitable wire length (four steps within the wire).

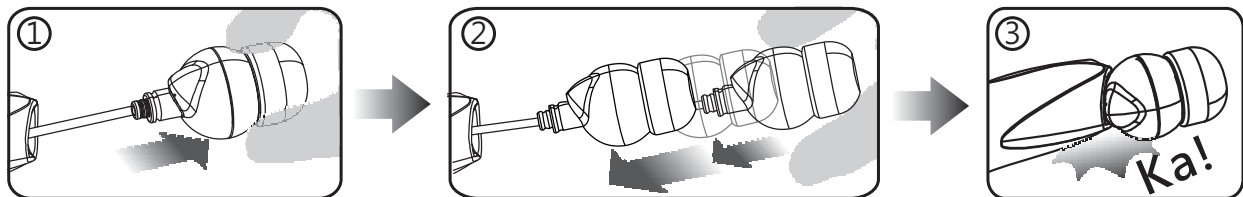
### How to Get a Suitable Wire Length



- ① Hold the earphone
- ② Rotate and Pull it out
- ③ Get a suitable wire length

4. Pull out the earphone to the end and release it quickly, it will return to the socket automatically. Push down the earphone to fix it into the socket.

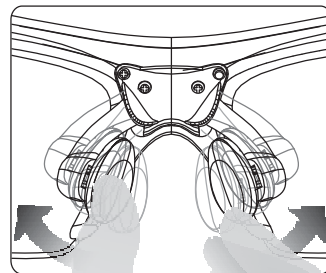
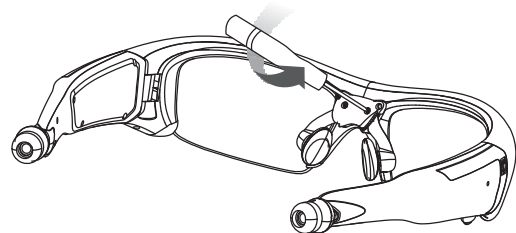
### How to Return the Earphone



- ① Pull out it to the end
- ② Pull again softly and release quickly
- ③ It will return to the socket automatically

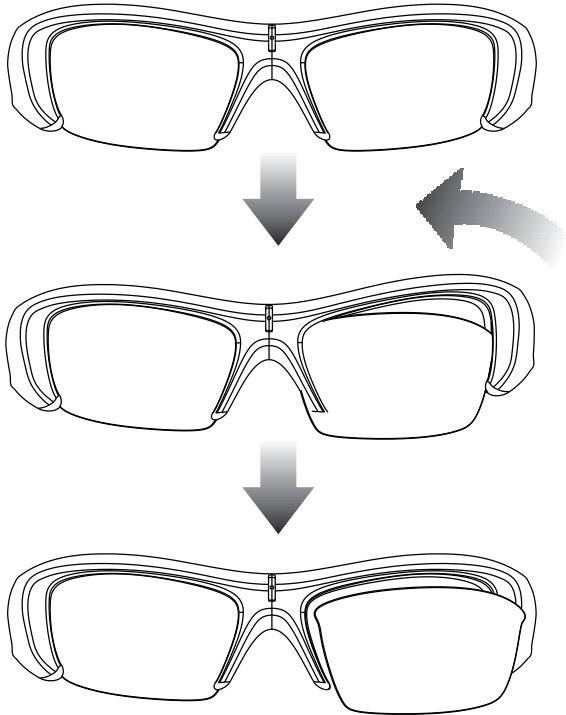
### Adjust the Nose Pads

1. Loosen the screw counterclockwise with the attached screwdriver for 2-3 cycles.
2. Adjust the angle of nose pads to fit your nose. Hold the stand to fix the angle and then tighten the screw clockwise.



## Change the Lenses

### ● Pull out the lens



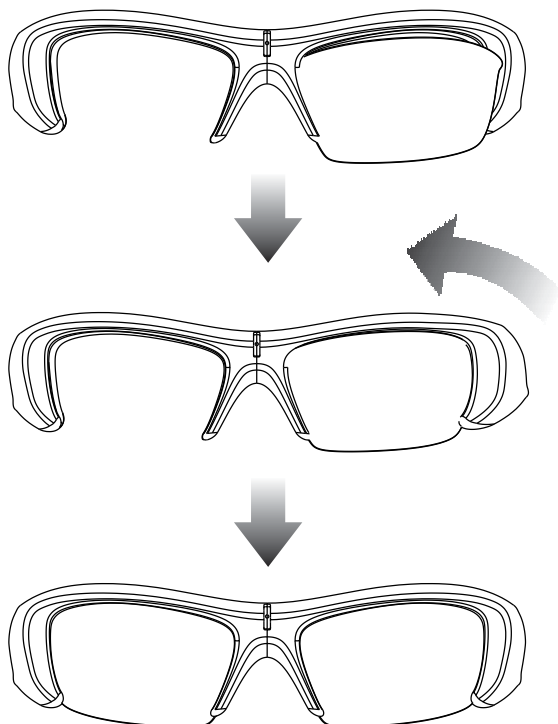
1. Take off the glasses and put the front side toward to yourself.

2. Grasp the right side and then bend up lightly to make the lens go out from the frame.

3. Pull out the lens from left side to right side.

4. For the other side follow the exact above instructions in reverse.

### ● Insert the lens



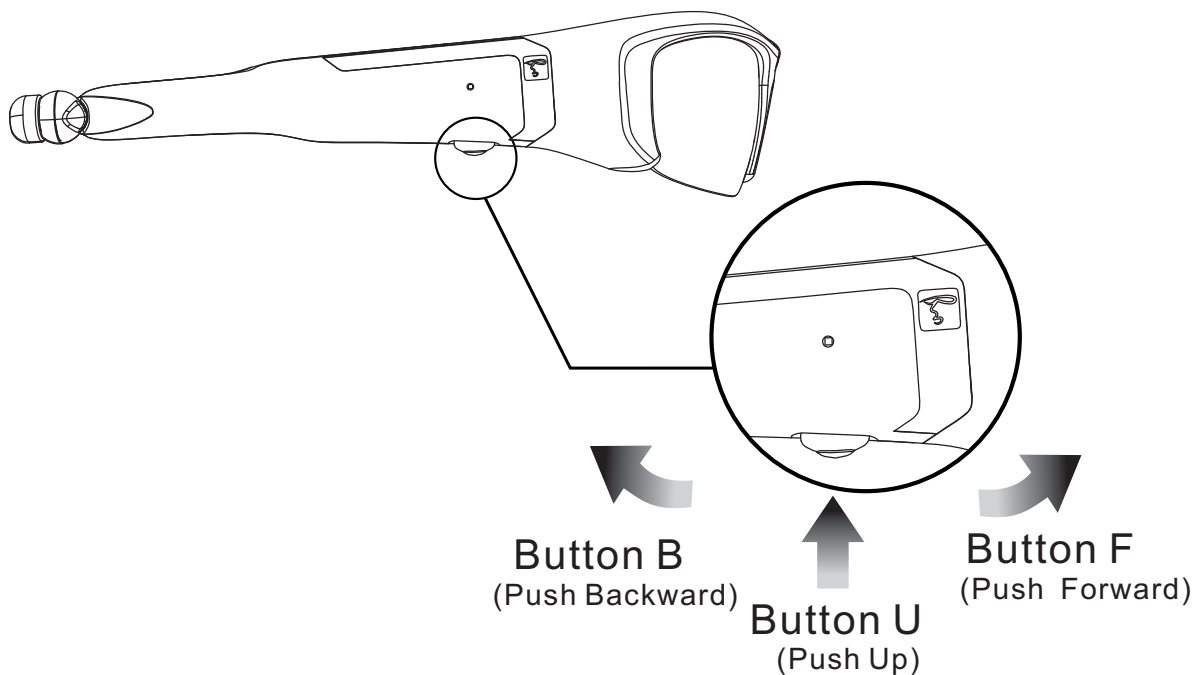
1. Insert the protruding left side of the lens.

2. Grasp the right side and then bend up lightly to insert the lens into the frame.

3. Adjust the lens to make sure it is completely stationary.

4. For the other side follow the exact above instructions in reverse.

## Illustration of Button Function



- ◎ **Short press** : Press button less than 1 second
- ◎ **Long press** : Press button about 2 seconds

## Pairing

- ◎ Turn on the Bluetooth communication of the device (mobile phone or computer) connected to the product.
- ◎ Long press button U until the blue and red LED flashes quickly to turn on the product.
- ◎ Search the product by using the Bluetooth of the device (mobile phone or computer). The identification code or password is "0000".
- ◎ Turn off the product first after communication ends, then turn off the device connected to the products.



- ⦿ Do not need to pair again to a paired device, just turn it on. (Blue LED flash)
- ⦿ Press button U to listen music when the product have been paired. (Depends on the cell phone)
- ⦿ Long press button U for 5 seconds to turn off the product.

## How to Use

### Talk mode:

- ⦿ Answer/End a call: Short press button U once.
- ⦿ Increase volume: Short press button B once. Long press button B increases volume until upper limit.
- ⦿ Decrease volume: Short press button F once. Long press button F decreases volume until lower limit.
- ⦿ Switch a call between the sunglasses and a cellphone: Long press button U .

### Music mode:

- ⦿ Increase volume: Short press button B once. Long press button B increases volume until upper limit.
- ⦿ Decrease volume: Short press button F once. Long press button F decreases volume until lower limit.
- ⦿ Last trace: Short press button F twice.
- ⦿ Next trace: Short press button B twice.
- ⦿ Stop/Play: Short press button U once.
- ⦿ Answer/End a call while listening music: Short press button U once.

Note: Volume has 12 steps.

**Standby mode:**

(connected with a cell phone)

- ⦿ Reject a call : Long press Button U once.
- ⦿ Redial: Long press button U once.
- ⦿ Voice dialing: Short press button B twice.  
Note: Check if the cell phone has the voice dialing function.  
Record the voice pattern through the sunglasses before using this function.
- ⦿ Battery power level: Short press button F twice.  
(Two seconds later: appears beep tone. Three beep tones mean high level, two beep tones mean medium level, one beep tone means low level.)

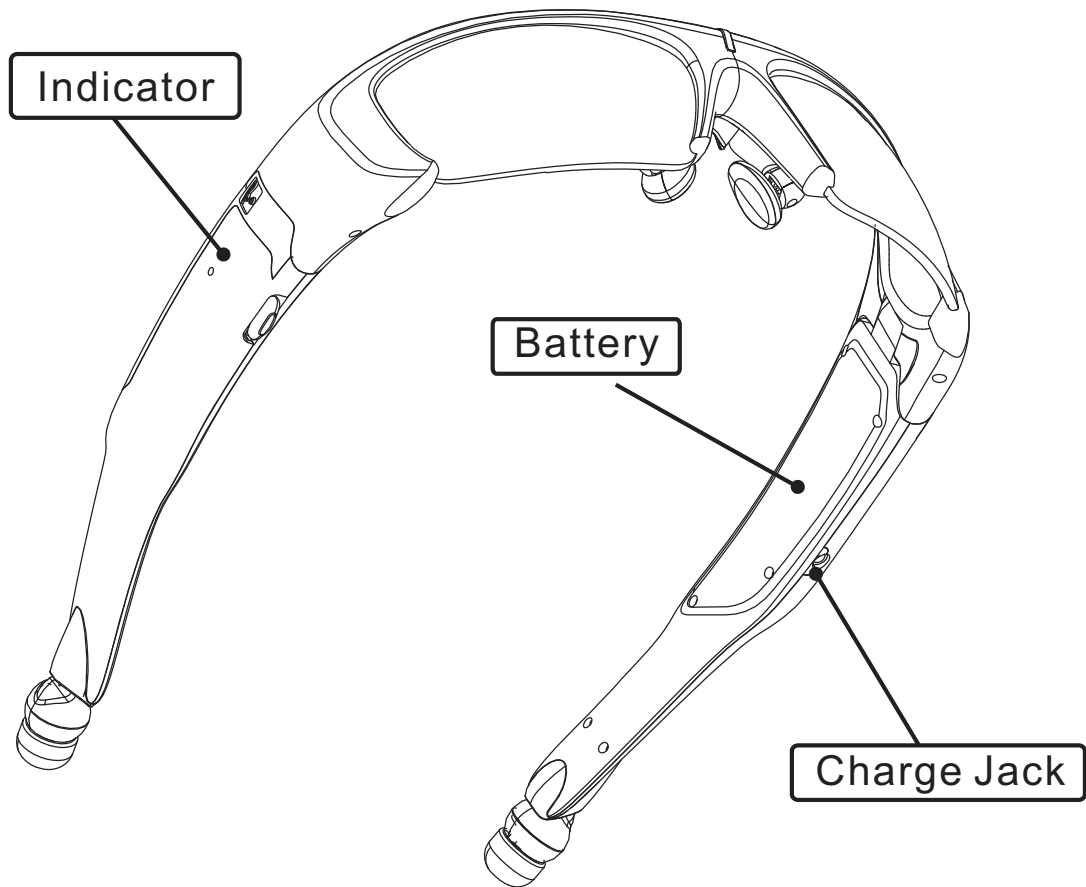
**Dual Pairing**

- ⦿ The product supports dual pairing. It can be connected with two cell phones at the same time and answer a call in turn.  
( Depends on the cell phone)

## Table of Operation Function

Status	Function	Operaton
OFF	Turn on	Long press botton U for 3 seconds
	Turn on and search device	Long press botton U for 5 seconds
Standby	Reject a call	Long press botton U once
	Redial	Long press botton U once
	Battery power display	Short press botton F twice
	Voice dailing	Short press botton B twice
Talk	Answer/End a call	Short press botton U once
	Volume decrease	Short press botton F once
	Volume increase	Short press botton B once
	Switch a call	Long press botton U once
Music	Volume decrease	Short press botton F once
	Volume increase	Short press botton B once
	Last Trace	Short press botton F twice
	Next Trace	Short press botton B twice
	Pause/Resume/Answer a call	Short press botton U once
ON	Turn off	Long press botton U for 5 seconds

## Instruction of battery charge



- ⦿ Charge as soon as possible when the warning sound appears on phone call or playing music. The warning sound indicates power shortage.
- ⦿ Use the certified battery charger provided by NeoVictory Company.
- ⦿ The red LED is on during charging battery and goes out when charging done. Pull out the charger when finish charging.
- ⦿ Battery breakdown or lifetime ends : Red LED flashes. Return it to the authorized maintenance company within warranty period, otherwise buy a new battery.

Advice : Do not use the product during charging.

## **Q & A**

### **Q : Why is BonSayOn product unable to link Bluetooth?**

A : First, make sure the Bluetooth existing in the device (mobile phone or computer) linked to BonSayOn product, and activate its Bluetooth to search BonSayOn. The search time is not definite, so please be patient to wait until BonSayOn product is shown on the screen of the device. Finally, key in identification code "0000" to start using BonSayOn product.

### **Q : Why is the Bluetooth unable to switch on or disconnect soon after online?**

A : It would be power shortage, please charge immediately so as to maintain battery quality. A new battery must be charged first until the red light goes out. If the problem is still unsolved, please contact with authorized maintenance service station.

### **Q: Why is Bluetooth auto-disconnected or unable to use after linking successfully?**

A: Check the Bluetooth "on line list" in the device (Pleas read your Bluetooth operation instructions.) linked to BonSayOn product. Delete most of the names on the online list except BonSayOn's to avoid linking other products.

**Q: Why cannot BonSayOn goggles connect to the device with Bluetooth protocols?**

A: BonSayOn goggles is equipped with Bluetooth chip made by the world first brand CSR company. It can connect to most of the Bluetooth devices but not all the Bluetooth devices due to the variety of Bluetooth protocols made by different companies.

**Q: Why cannot play the music again by using the buttons on BonSayOn after picking up a call or pause the music playing?**

A: The cell phone manufacturers usually implement somewhat different button operation software, resulting in partial operation malfunction. Please touch the play button on your cell phone to continue playing the music on BonSayOn.

## Product Service

All products made by Neovictory Company are warranted for one year (count from the purchase date) against malfunction induced by the defects of parts and manufacture under normal use. This service is not applied to goods which have been subject to accidents, negligence, improper installation or misuse. NeoVictory Company responsibility under this service is limited only to the replacement of parts and no other cost. Should a malfunction occur which is covered by this service, please contact with NeoVictory Company authorized maintenance service station.

## Electromagnetic safety

By using EMF Tester to measure the electromagnetic field (EMF) of the general cell phones in comparison to BonSayOn's, BonSayOn's EMF magnitude is about 0.2 mG (standby) or 0.7-0.8 mG (dialogue), which is far below the general cell phones', about 10 mG (standby) or 15 mG (dialogue) in the same certain testing conditions. The restricted human EMF exposure is about 2 mG for the medical requirement, and some European countries even set the restricted EM level at 0.7 mG. In conclusion, the electromagnetic safety of BonSayOn is far much higher than cell phones'.

# Product Warranty

(Please keep this warranty for free maintenance in one year after purchase.)

Name : \_\_\_\_\_

Phone : \_\_\_\_\_

Product Name : \_\_\_\_\_

Mobile phone : \_\_\_\_\_

Serial Number : \_\_\_\_\_

Purchase Date : \_\_\_\_\_

Address : \_\_\_\_\_

e-mail : \_\_\_\_\_ @ \_\_\_\_\_

## Exclusivity:

1. Disassembling, hitting, and soaking in water, or abnormal use.
2. Physical or electronic disturbance, the misuse of power source, unstable power source, very close to magnetic material or other artificial factors.
3. The breakage of serial number, date code, product tag, warranty lost, etc.
4. Irresistible external factors : Earthquake, seaquake, war, etc.
5. The damage or burning of the product would be made by using the charger not certified by NeoVictory Company.
6. Without NeoVictory stamp or the incorrect purchase date, warranty is invalid automatically.

新 興 盛 科 技 股 份 有 限 公 司

NEOVICTORY TECHNOLOGY CO., LTD.

7 0 1 6 5    台 南 市 東 區 東 寧 路 5 6 2 號 2 樓

2F, No.562, Dongning Rd., East Dist., Tainan City 70165, Taiwan(R.O.C)

Tel. +886-6-2371838

Fax.+886-6-2376716

+886-6-2373628

www.neovictory.com E-mail : info@neovictory.com







BonSayOn S102  
FCC ID : X5HS102  
Model Name : S102  
Brand Name : BonSayOn

This device complies with Part 15 of the FCC Rules.  
Operation is subject to the following two conditions:  
(1) this device may not cause harmful interference, and  
(2) this device must accept any interference received,  
including interference that may cause undesired operation.

## **FCC statement in User's Manual (for class B)**

### **"Federal Communications Commission (FCC) Statement**

This Equipment has been tested and found to comply with the limits for a class B digital device, pursuant to Part 15 of the FCC rules. These limits are designed to provide reasonable protection against harmful interference in a residential installation. This equipment generates, uses and can radiate radio frequency energy and, if not installed and used in accordance with the instructions, may cause harmful interference to radio communications. However, there is no guarantee that interference will not occur in a particular installation. If this equipment does cause harmful interference to radio or television reception, which can be determined by turning the equipment off and on, the user is encouraged to try to correct the interference by one or more of the following measures:

- Reorient or relocate the receiving antenna.
- Increase the separation between the equipment and receiver.
- Connect the equipment into an outlet on a circuit different from that to which the receiver is connected.
- Consult the dealer or an experienced radio/TV technician for help.

### FCC Caution:

1. The device complies with Part 15 of the FCC rules. Operation is subject to the following two conditions:
  - (1) This device may not cause harmful interference, and
  - (2) this device must accept any interference received, including interference that may cause undesired operation.
2. This device and its antenna(s) must not be co-located or operating in conjunction with any other antenna or transmitter.
3. Changes or modifications to this unit not expressly approved by the party responsible for compliance could void the user authority to operate the equipment.