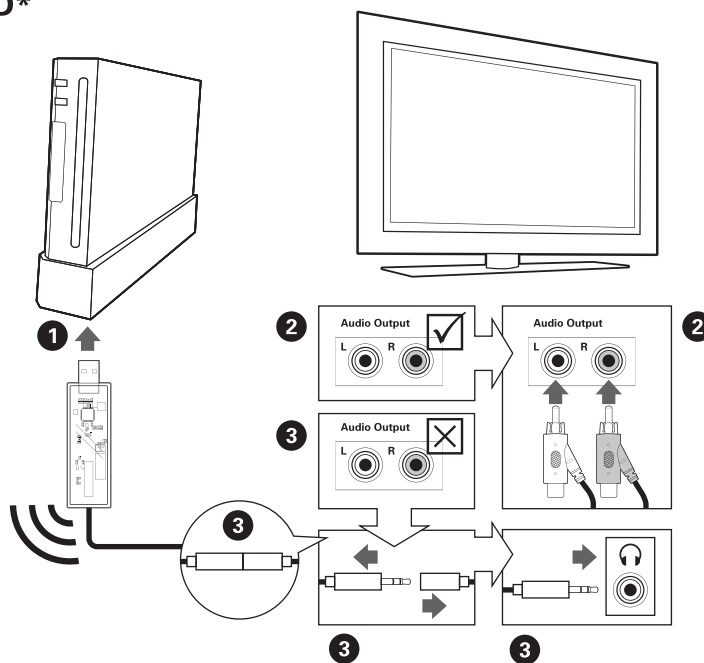


SET UP: NINTENDO Wii™

DIRECT TO TV CONNECTION METHOD*

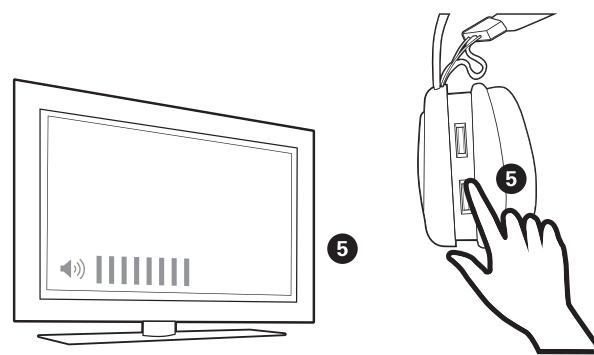
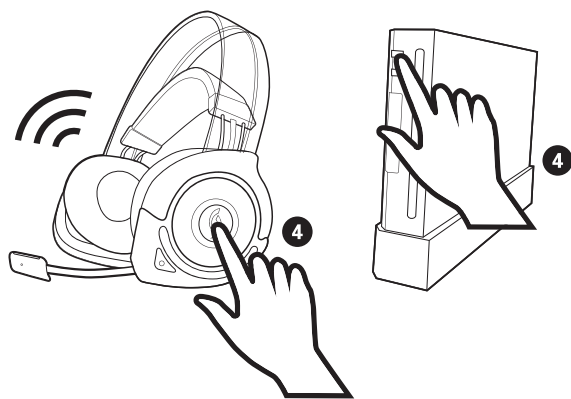
*Note: This setup may vary depending on the TV

1. Plug the Afterglow® USB transmitter into the front USB port of the Wii™ console.
2. Plug the RCA (Red/White) ends of transmitter's audio cable into the TV's Audio Out. Then skip to step 4.
3. If your TV does not have an RCA Audio Out, disconnect the RCA cable at its breakaway and expose the headphone jack. Plug the headphone jack of the USB transmitter into TV's headphone input.



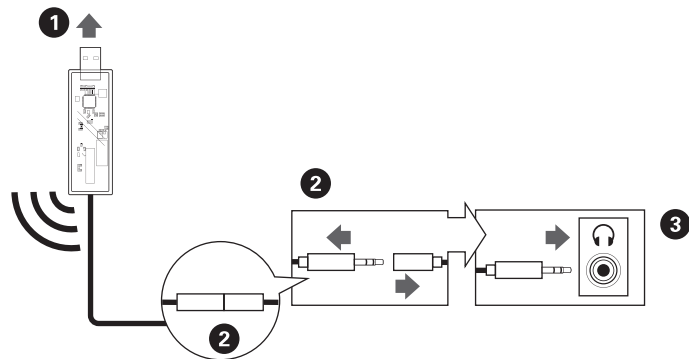
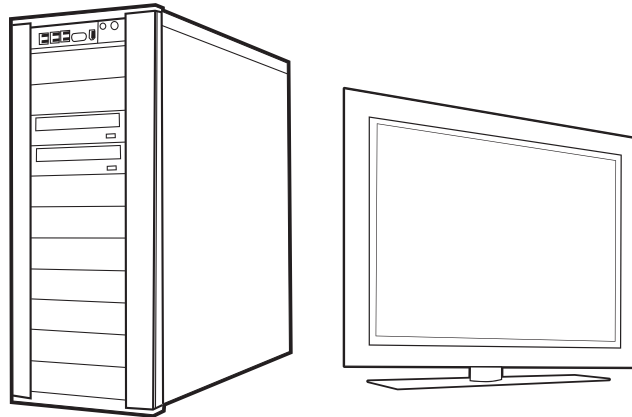
4. Turn the TV, console, and headset power ON.

5. Adjust the TV volume to a comfortable level first and then adjust the volume level on your headset.

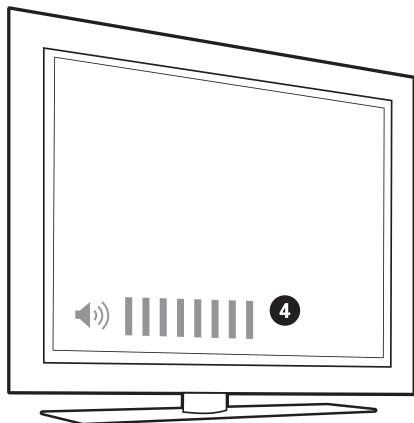


SET UP: PC

1. Plug the Afterglow® USB transmitter into one of the USB ports of the PC/Mac.
2. Disconnect the RCA cable at its breakaway and expose the 3.5mm universal audio jack.
3. Connect the 3.5mm audio jack into the headphone input of your PC/Mac.



4. Adjust your PC/Mac volume to a comfortable level.



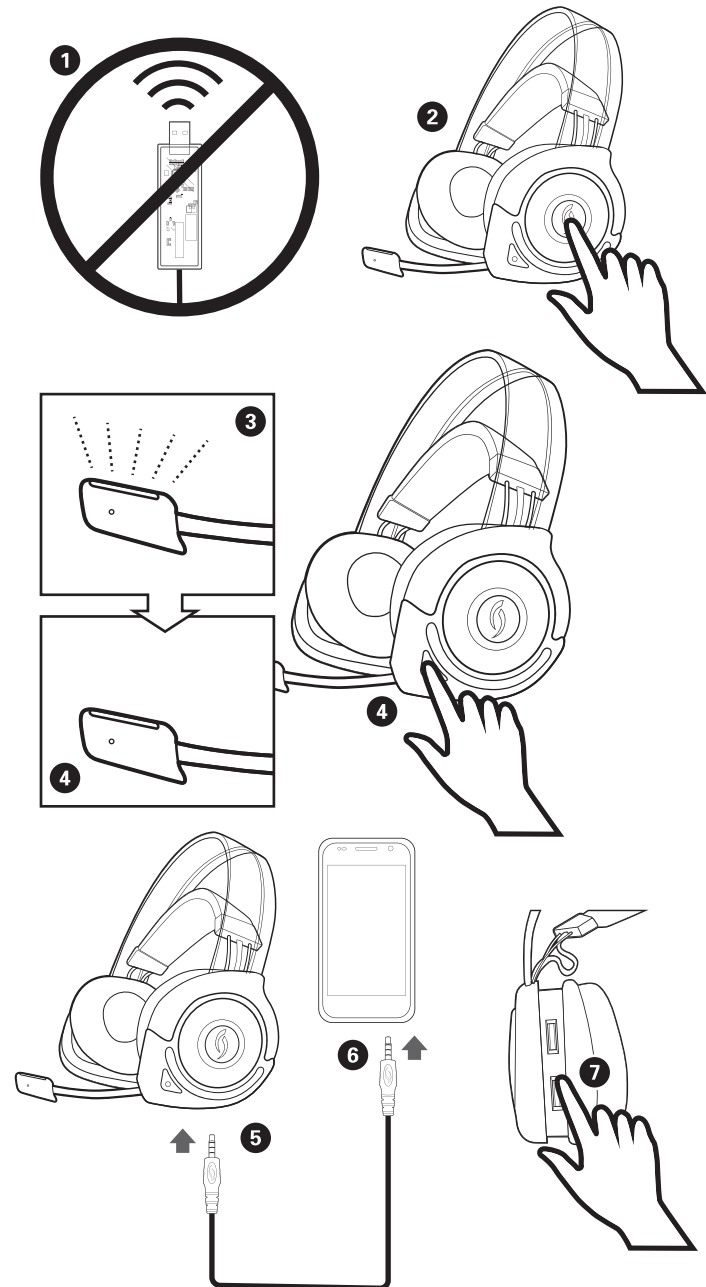
SET UP: MOBILE DEVICES

The Afterglow® headset is a wireless product designed to work with gaming consoles and computers. Although a cable which makes your headset compatible with mobile phones and music players is provided. Note: in order to use this headset in mobile mode the device must have a 3.5mm headphone jack (commonly found with iPhone®, iPod®, and other smartphones and tablets) You can use the headset with a mobile device while the headset is powered OFF. The below instructions are for using the headset with a mobile device while keeping the headset lights ON.

1. Unplug the USB transmitter from the game console or PC/Mac. (this ensures that the USB transmitter is not transmitting)
2. Turn the headset ON by pressing the Power/Mute button.
3. Notice the Afterglow® lights are ON and the microphone multicolor LED is constantly cycling between the colors red, green, and blue.
4. Press and hold the "Mode" button until the microphone multicolor LED turns OFF.
5. Plug one end of the (gray) audio cable into the "Line In" port on the bottom of the headset.
6. Plug the other end of the audio cable into the mobile device.
7. Adjust the volume level of the mobile device to a comfortable level.

Note: In Mobile mode the Afterglow® headset acts as a passive headset. As the connection between the mobile device and the headset is wired, the capabilities of the headset are limited in this mode:

- Custom audio modes will not function – you will be in default Pure Audio mode.
- You can use the microphone BUT cannot mute it with the headset's mute button (you can use the mute function on your mobile device).
- Volume levels can only be adjusted on the mobile device.
- Game Chat balance will be non-functional.



AFTERGLOW®

AUDIO MODES:

The Afterglow® headset offers 3 different audio modes. You can tell which mode you are in by the designated color shown on the microphone LED.

Pure Audio: Raw audio without any digital enhancement. In this mode the Afterglow® headset offers its well balanced acoustic tuning, letting you hear everything the game developers meant for you to hear.

Bass Boost: For those who prefer an extra kick on the low end of the frequency spectrum, an undistorted, clean, digitally enriched bass sound.

Immersive: With the powerful digital signal processor on board, the Afterglow® headset offers this proprietary 3D sound algorithm which expands the audio, creating a more immersive sound without altering the directionality, giving you a competitive edge in gaming.

Additional notes on Audio Modes:

- The headset will default to the "Pure Audio" mode at startup and will revert to this mode every time you turn it ON/OFF.
- This light will blink once per minute if you are on MUTE and it will blink the color of the audio mode.

WIRELESS HEADSET

LIGHTING:

The Afterglow® wireless headset offers different lighting modes. Once the headset is connected to the USB transmitter, you can control the lighting modes by holding the MODE button.

After holding 2 seconds the headset will cycle through 4 settings:

- Headband only
- Ear-cups only
- All lights OFF
- Default: Ear-cup and headband lights are ON

Note the following:

- The lighting will go back to default mode every time you turn the headset ON/OFF.
- The microphone multicolor LED will not be affected by the above lighting modes, and as long as there is a wireless connection it will be ON.
- While charging, the lighting modes will NOT function as the lights are used to display the charging sequence.
- If the headset is low on battery, the Afterglow® lights will automatically turn OFF to conserve power.

AFTERGLOW®

POWER & CHARGING:

The wireless Afterglow® headset has a built-in, rechargeable Lithium battery that will last 10 to 12 hours, depending on use and lighting mode.

- The headset comes partially charged, but it's recommended that you fully charge the headset using the provided 10' Play & Charge cable prior to use.
- It will take approximately 3 hours to fully charge a completely drained battery.
- When charging, the Afterglow lights will pulsate indicating positive charge.
- When fully charged, the Afterglow lights will go back to the last active lighting mode and stop pulsating.

Low Battery:

- The Afterglow headset will play a tone to warn the user that it's running low on battery.
- This low battery tone will play once every minute until the battery is completely out of power.
- Play time is estimated to be 10 minutes once the headset goes into low battery state.
- Plug the provided 10' USB Play & Charge cable into the headset and the other end into the console/computer to charge while headset is active.
- The headset can also be charged while it's OFF.

Note: Some gaming consoles and computers DO NOT provide power to their USB ports when they are OFF. The headset needs a powered USB port in order to complete charging.

WIRELESS HEADSET

TECHNICAL SPECIFICATION:

- Closed back dynamic headphones.
- 50mm drivers with Neodymium rare-earth magnets.
- 20 degree angled acoustic baffle for accurate, linear sound reproduction.
- Audio frequency response: 20Hz – 20Khz at 115dB.
- Digital signal processor with customized audio algorithms.
- 2.4GHz wireless communication via Avnera technology.
- 900mAh rechargeable Lithium Polymer battery ~ 10 hours of battery life.