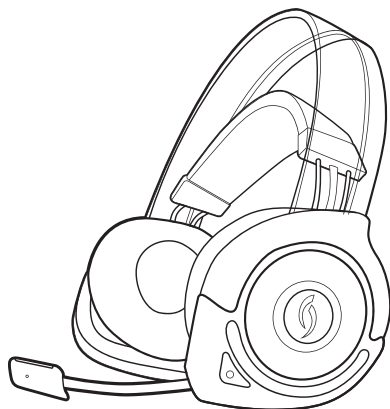


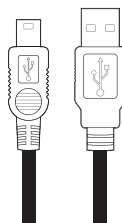
AFTERGLOW®

WIRELESS HEADSET

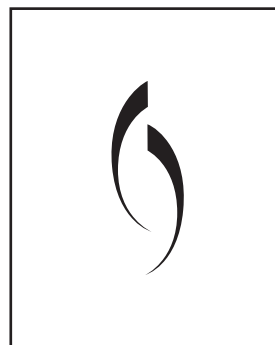
WHAT'S IN THE BOX:



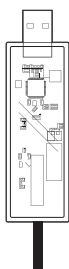
WIRELESS HEADSET



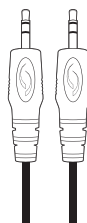
**CHARGE & PLAY
USB CABLE**



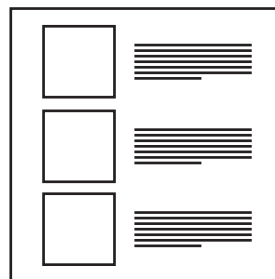
**AFTERGLOW®
STICKER**



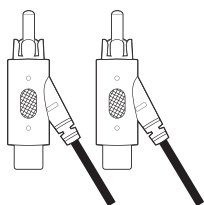
USB TRANSMITTER



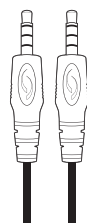
**XBOX 360®
CHAT CABLE**



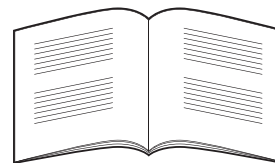
**AFTERGLOW®
ONLINE OFFERING**



RCA CABLE



**MUSIC/LINE-IN
CABLE**



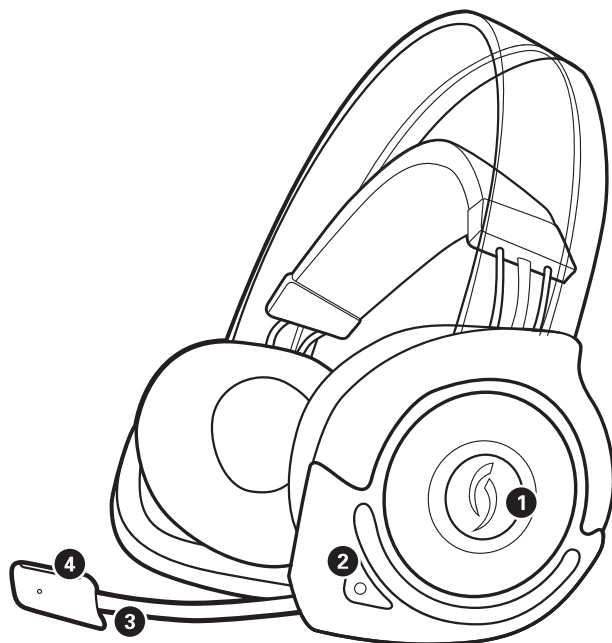
USER MANUAL

Model: PL-9929R, PL3771R, PL6471R (for Headset)
PL-9929T, PL3771T, PL6471T (for Dongle)

TABLE OF CONTENTS

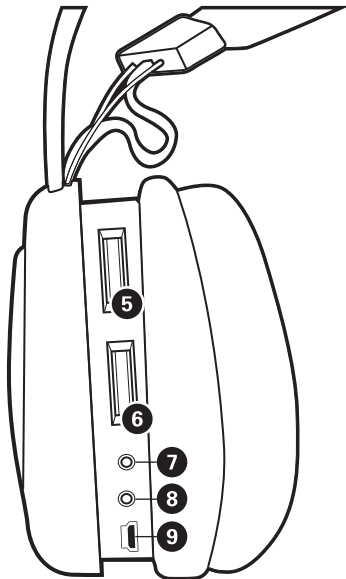
Headset Overview	1-2										
Set Up	<table> <tr> <td>XBox 360®</td> <td>3-4</td> </tr> <tr> <td>Playstation 3®</td> <td>5-7</td> </tr> <tr> <td>Wii™</td> <td>8-9</td> </tr> <tr> <td>PC/Mac</td> <td>10</td> </tr> <tr> <td>Mobile</td> <td>11</td> </tr> </table>	XBox 360®	3-4	Playstation 3®	5-7	Wii™	8-9	PC/Mac	10	Mobile	11
XBox 360®	3-4										
Playstation 3®	5-7										
Wii™	8-9										
PC/Mac	10										
Mobile	11										
Audio Modes	12										
Lighting Modes	12										
Power & Charging	13										
Technical Specification	13										
Troubleshooting	14										

HEADSET OVERVIEW:

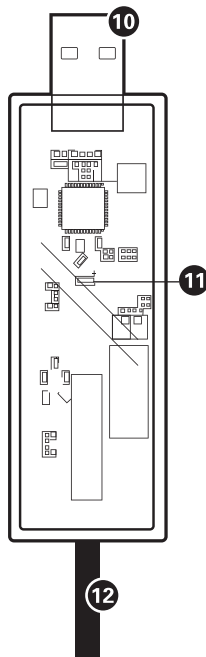


- 1. ON/OFF & MUTE BUTTON:** Press and hold to power ON. Press and hold to power off. Once connected, button now functions as mute. Click button to mute microphone, click again to unmute.
- 2. MODE BUTTON:** Click to change the audio modes. (3 modes)
- 3. RETRACTABLE NOISE-CANCELLING MICROPHONE:** Extends 3.5" and adjusts with its flexible cable.
- 4. MODE INDICATION LED:** Multi color LED indicator on the microphone tip tells you that you are paired, which audio mode you are in, and if you are muted.

HEADSET OVERVIEW:



5. **VOLUME DIAL:** Adjusts the master volume level.
6. **GAME/CHAT VOLUME BALANCE:** Adjusts the balance of incoming chat and game volume levels.
7. **XBOX 360® TALK BACK PORT:** Plug the Xbox 360 chat cable (green) and the other end of the cable into the game controller.
8. **UNIVERSAL AUDIO LINE-IN PORT:** Plug the grey color universal audio cable (gray) into this port and the other end of the cable into a sound source (e.g. iPod®, iPhone®, MP3 player) – microphone is supported.
9. **CHARGING PORT:** Plug the Play & Charge cable's mini USB connector into this port (10' black cable) and the other end into a game console or other powered USB source to charge the built-in rechargeable battery.



USB TRANSMITTER:

10. **USB CONNECTOR:** Plug into a game console or PC.
11. **STATUS LED:** A blinking LED means headset is powered OFF. A solid light means the headset and transmitter are communicating properly.
12. **AUDIO CABLE:** Analog audio cable; plug into the sound source (console, PC, receiver, or TV).

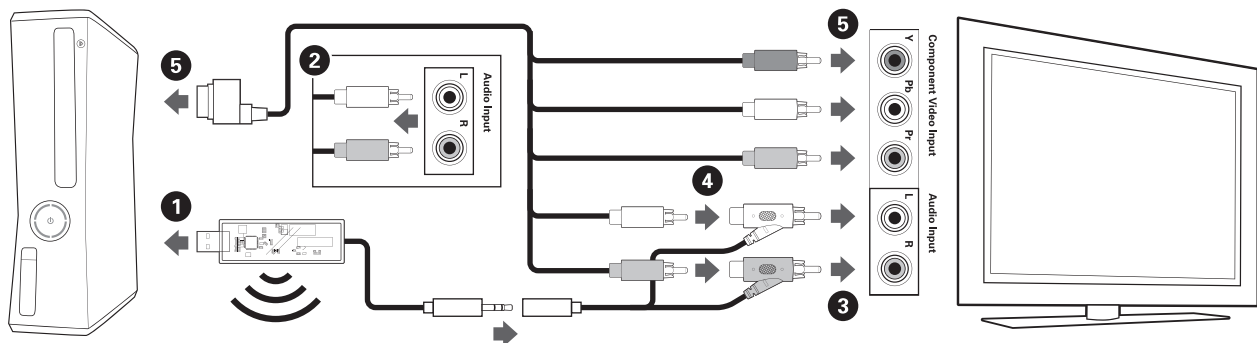
AFTERGLOW® WIRELESS HEADSET

SET UP: XBOX 360®

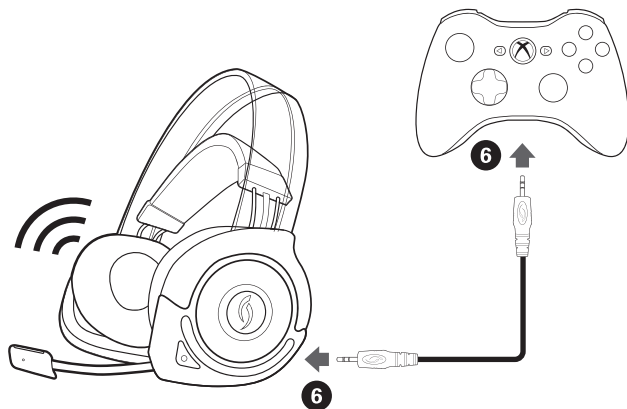
CONNECTED WITH COMPONENT/COMPOSITE CABLE*

*Cable comes with the Xbox console.

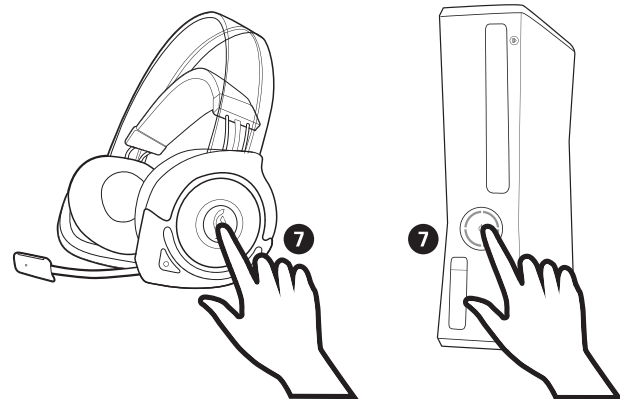
1. Plug the Afterglow® USB transmitter into one of the front USB ports of the Xbox 360® console.
2. Unplug the RCA cable (Red/White only) that runs from your console to the TV.
3. Plug the RCA cable that is attached to the Afterglow® USB transmitter (Red/White) into the TV.
4. Re-plug in the RCA cable from the console into the pass-through of the Afterglow® RCA cable that is now plugged into the TV.
5. Leave the Xbox 360® component/composite video plugs connected to the TV.



6. Plug one end of the Xbox 360® chat cable into the headset, plug the other end into the controller.



7. Turn the TV, console, and headset power ON.

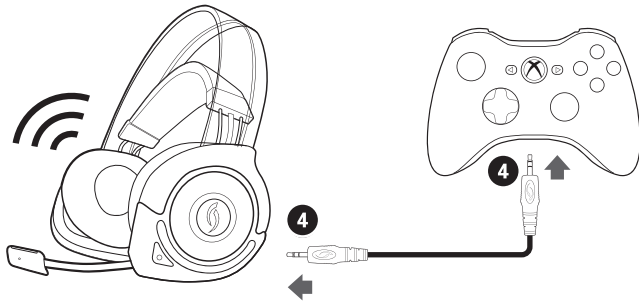


SET UP: XBOX 360®

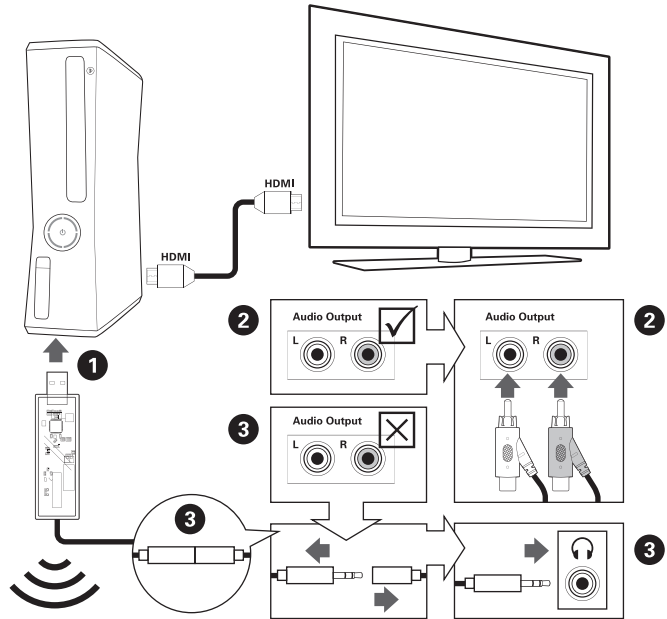
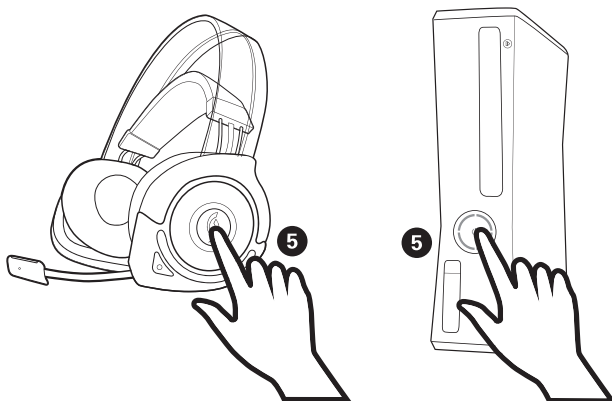
CONNECTED WITH HDMI*

*HDMI cable not included.

1. Plug the Afterglow® USB transmitter into the front USB port of the Xbox 360® console
2. Plug the RCA (Red/White) ends of the transmitter's audio cable into the TV's Audio Out. Then skip to step 4.
3. If your TV does not have an RCA Audio Out: disconnect the RCA cable at its breakaway and expose the headphone jack. Plug the headphone jack of the USB transmitter into the TV's headphone input.
4. Plug one end of the Xbox 360® chat cable into the headset, plug the other end into the controller.



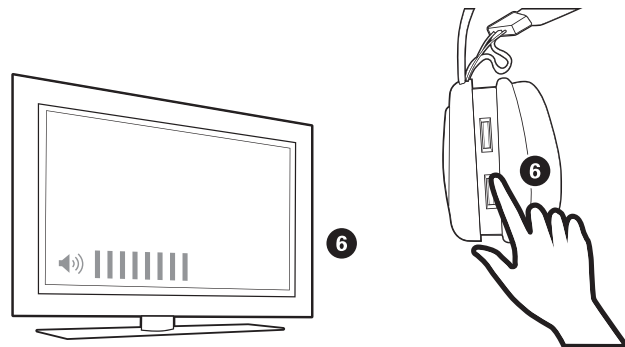
5. Leave your HDMI connection intact. Turn the TV, console, and headset power ON.



IMPORTANT: If your TV doesn't support audio out, you may require an Xbox 360® HDMI Audio Adapter.

Contact PDP Customer Service at **1-800-331-3844** or go to <http://www.afterglowgaming.com/360audioadapter>
The cable and shipping (priority 2-day) is free.

6. Adjust the TV volume to a comfortable level first, then adjust the volume level on your headset.



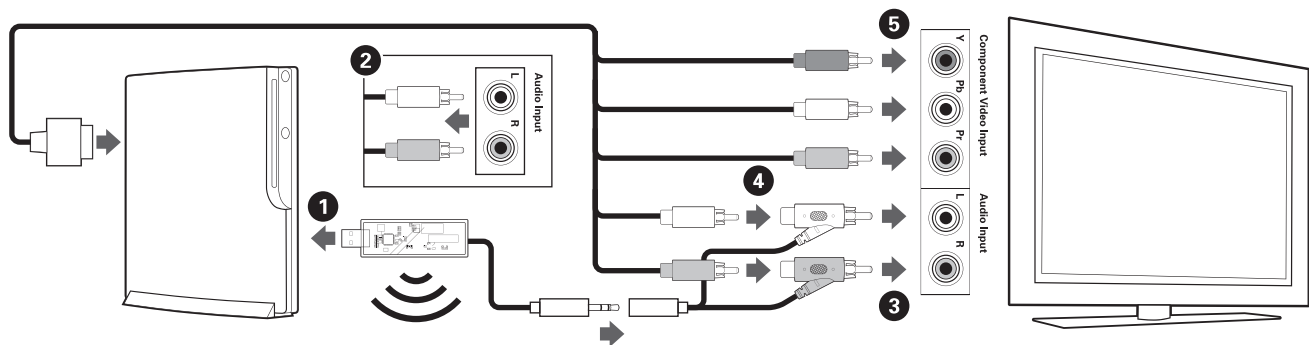
AFTERGLOW® WIRELESS HEADSET

SET UP: PLAYSTATION® 3

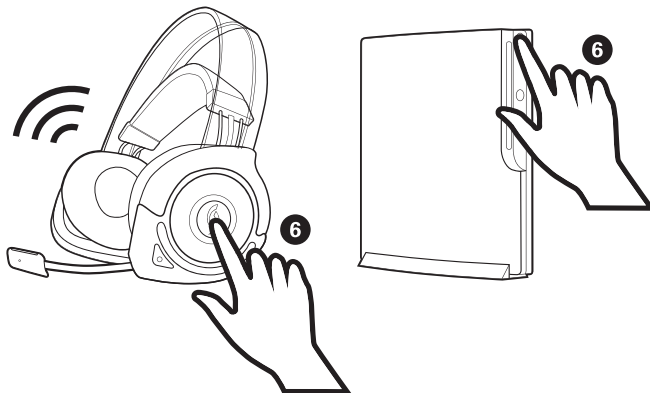
CONNECTED WITH COMPONENT/COMPOSITE CABLE*

*Cable comes with the PS3® console.

1. Plug the Afterglow® USB transmitter into one of the USB ports of the PS3® console .
2. Unplug the RCA cable (Red/White only) that runs from your console to the TV.
3. Plug the RCA cable (Red/White) that is attached to the Afterglow® USB transmitter into the TV.
4. Re-plug the RCA cable from the console into the pass-through ports of the Afterglow RCA cable that is now plugged into the TV.
5. Leave the PlayStation® 3 component/composite video plugs connected to the TV.



6. Turn the console and headset power ON.

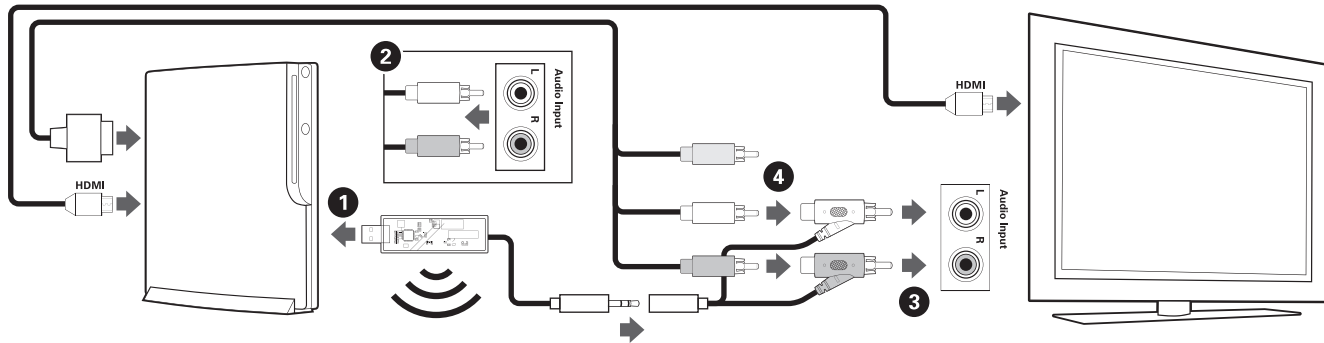


SET UP: PLAYSTATION® 3

CONNECTED WITH HDMI*

*HDMI cable not included.

1. Plug the Afterglow® USB transmitter into one of the USB ports of the PS3® console .
2. Unplug the RCA cable (Red/White only) that runs from your console to the TV.
3. Plug the RCA cable (Red/White) that is attached to the Afterglow USB transmitter into the TV.
4. Re-plug the RCA cable from the console into the pass-through of the Afterglow® RCA cable that is now plugged into the TV.



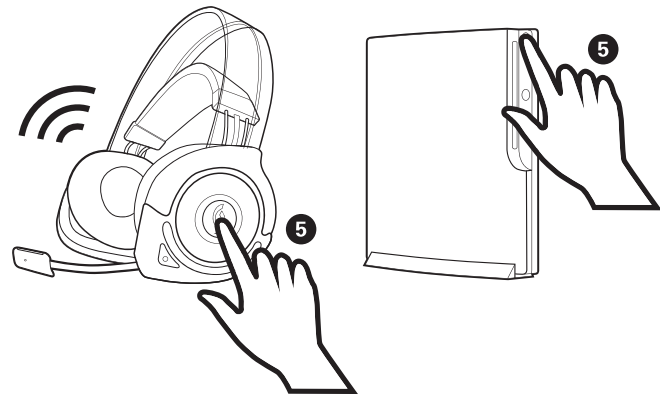
5. Turn the console and headset power ON.

Then in your Playstation XMB menu:

1. Go to Settings
2. Select "Sound Settings"
3. Select "Audio Output Settings"
4. Select the audio out as "Audio Input Connector"
5. Press X – Enter

Note: If you want the game audio to come from the headset and the TV simultaneously:

1. Go to Settings
2. Select "Sound Settings"
3. Audio Multi-Out: Turn it ON



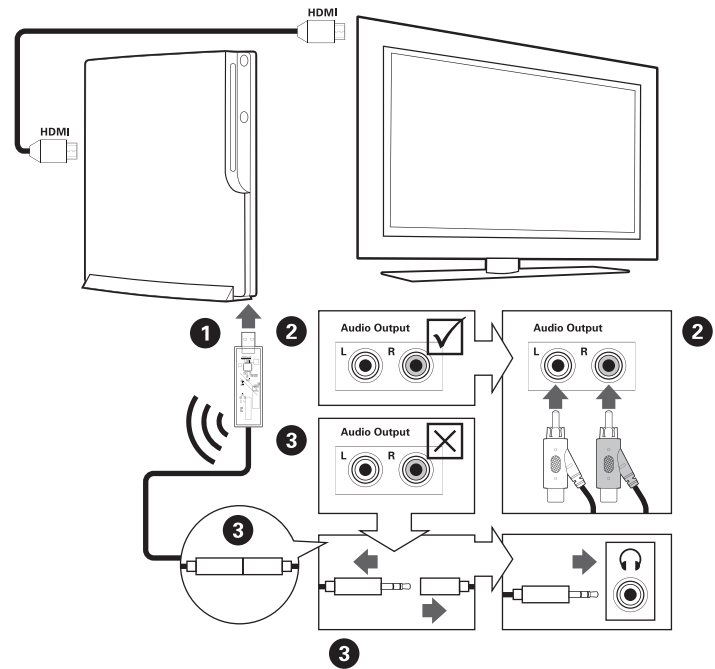
If you have lost your PS3 composite cable, contact PDP customer service at 1-800-331-3844 or go to <http://www.afterglowgaming.com/PS3AVcable>
The cable and shipping (priority 2-day) is free.

SET UP: PLAYSTATION® 3

DIRECT TO TV CONNECTION WITH NO PS3 COMPOSITE CABLE*

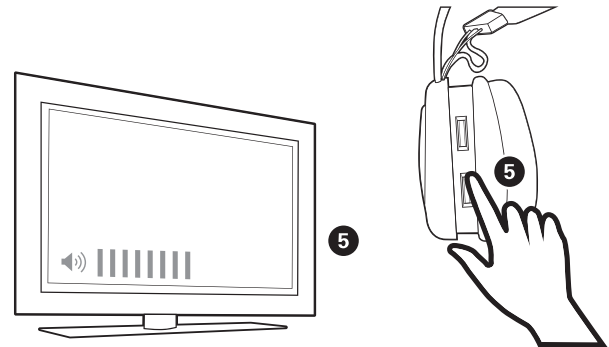
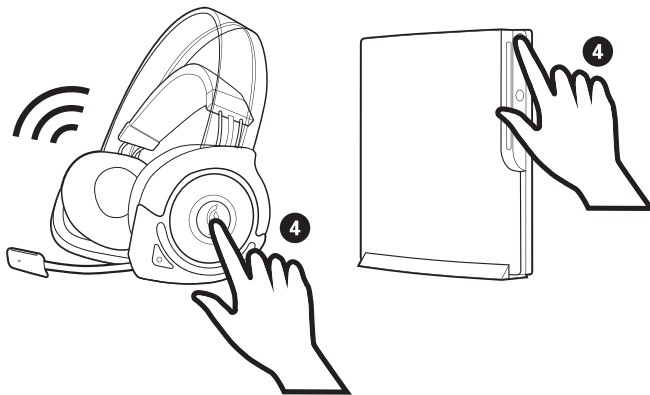
*Note: This setup may vary depending on the TV

1. Plug the Afterglow® USB transmitter into the front USB port of the PS3® console.
2. Plug the RCA cable (Red/White) that is attached to the Afterglow USB transmitter into the TV's Audio Out ports. Then skip to step 4.
3. If your TV does not have an RCA Audio Out, disconnect the RCA cable at its breakaway and expose the headphone jack. Plug the headphone jack of the USB transmitter into TV's headphone input.



4. Leave your HDMI connection intact. Turn the TV, console, and headset power ON.

5. Adjust the TV volume to a comfortable level first and then adjust the volume level on your headset.

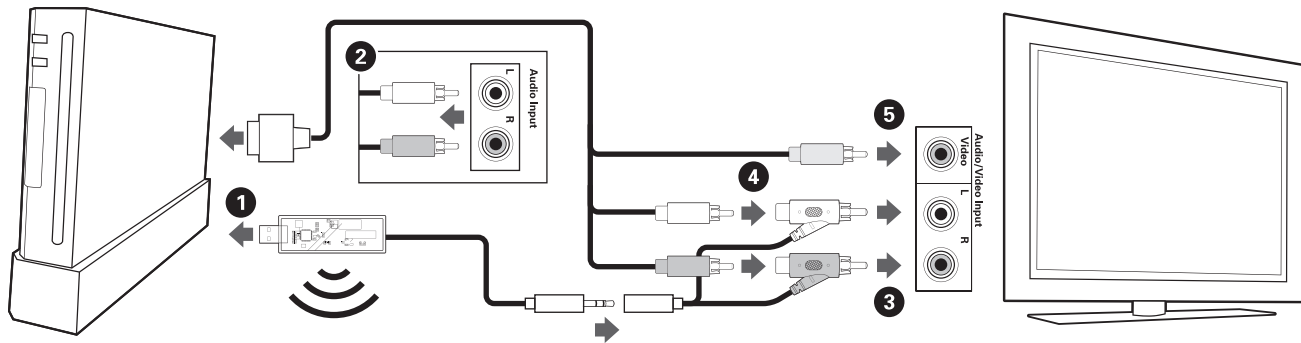


SET UP: NINTENDO Wii™

CONNECTED WITH COMPOSITE CABLE*

*Cable comes with the Nintendo Wii™ console.

1. Plug the Afterglow® USB transmitter into one of the front USB ports of the Wii™ console.
2. Unplug the RCA cable (Red/White only) that runs from your console to the TV.
3. Plug the RCA cable (Red/White) that is attached to the Afterglow USB transmitter into the TV.
4. Plug the RCA cable from the console into the pass-through of the Afterglow® RCA cable that is now plugged into the TV.
5. Leave the Wii™ component/composite video plugs connected to the TV.



6. Turn the TV, console, and headset power ON.

