

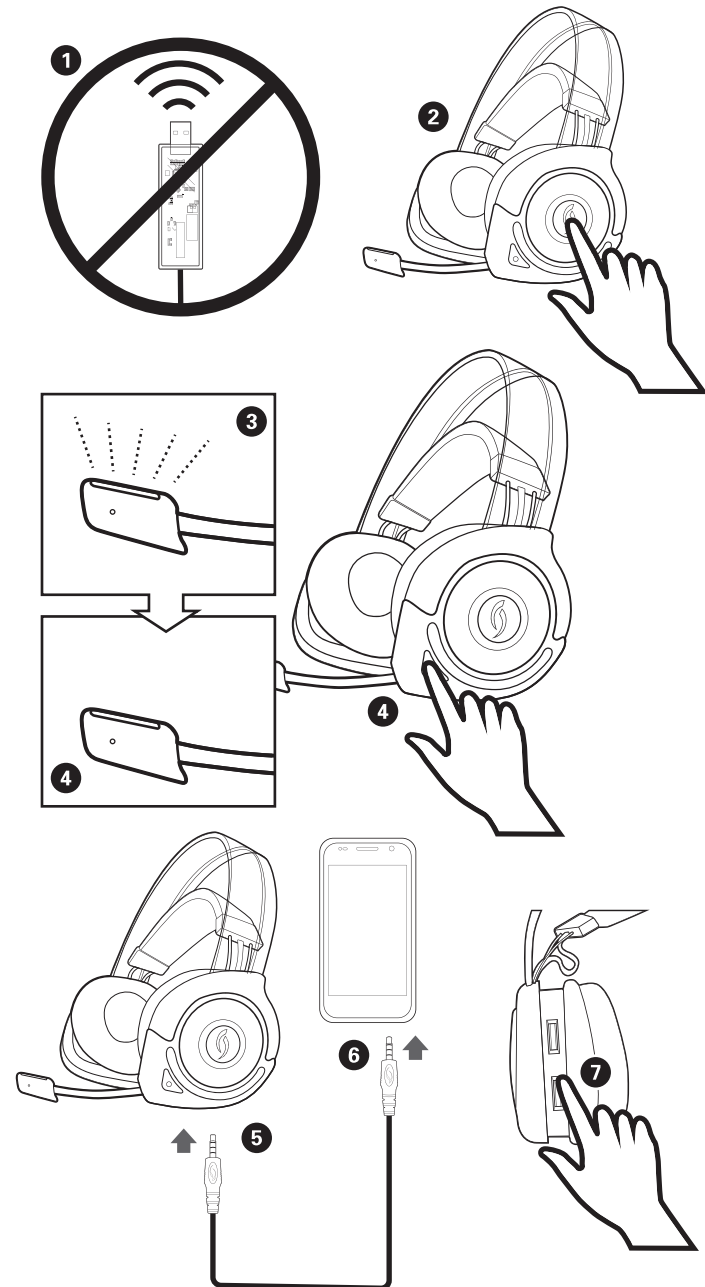
SET UP: MOBILE DEVICES

The Afterglow® headset is a wireless product designed to work with gaming consoles and computers. Although a cable which makes your headset compatible with mobile phones and music players is provided. Note: in order to use this headset in mobile mode the device must have a 3.5mm headphone jack (commonly found with iPhone®, iPod®, and other smartphones and tablets) You can use the headset with a mobile device while the headset is powered OFF. The below instructions are for using the headset with a mobile device while keeping the headset lights ON.

1. Unplug the USB transmitter from the game console or PC/Mac. (this ensures that the USB transmitter is not transmitting)
2. Turn the headset ON by pressing the Power/Mute button.
3. Notice the Afterglow® lights are ON and the microphone multicolor LED is constantly cycling between the colors red, green, and blue.
4. Press and hold the "Mode" button until the microphone multicolor LED turns OFF.
5. Plug one end of the (gray) audio cable into the "Line In" port on the bottom of the headset.
6. Plug the other end of the audio cable into the mobile device.
7. Adjust the volume level of the mobile device to a comfortable level.

Note: In Mobile mode the Afterglow® headset acts as a passive headset. As the connection between the mobile device and the headset is wired, the capabilities of the headset are limited in this mode:

- Custom audio modes will not function – you will be in default Pure Audio mode.
- You can use the microphone BUT cannot mute it with the headset's mute button (you can use the mute function on your mobile device).
- Volume levels can only be adjusted on the mobile device.
- Game Chat balance will be non-functional.



AFTERGLOW®

AUDIO MODES:

The Afterglow® headset offers 3 different audio modes. You can tell which mode you are in by the designated color shown on the microphone LED.

Pure Audio: Raw audio without any digital enhancement. In this mode the Afterglow® headset offers its well balanced acoustic tuning, letting you hear everything the game developers meant for you to hear.

Bass Boost: For those who prefer an extra kick on the low end of the frequency spectrum, an undistorted, clean, digitally enriched bass sound.

Immersive: With the powerful digital signal processor on board, the Afterglow® headset offers this proprietary 3D sound algorithm which expands the audio, creating a more immersive sound without altering the directionality, giving you a competitive edge in gaming.

Additional notes on Audio Modes:

- The headset will default to the "Pure Audio" mode at startup and will revert to this mode every time you turn it ON/OFF.
- This light will blink once per minute if you are on MUTE and it will blink the color of the audio mode.

WIRELESS HEADSET

LIGHTING:

The Afterglow® wireless headset offers different lighting modes. Once the headset is connected to the USB transmitter, you can control the lighting modes by holding the MODE button.

After holding 2 seconds the headset will cycle through 4 settings:

- Headband only
- Ear-cups only
- All lights OFF
- Default: Ear-cup and headband lights are ON

Note the following:

- The lighting will go back to default mode every time you turn the headset ON/OFF.
- The microphone multicolor LED will not be affected by the above lighting modes, and as long as there is a wireless connection it will be ON.
- While charging, the lighting modes will NOT function as the lights are used to display the charging sequence.
- If the headset is low on battery, the Afterglow® lights will automatically turn OFF to conserve power.