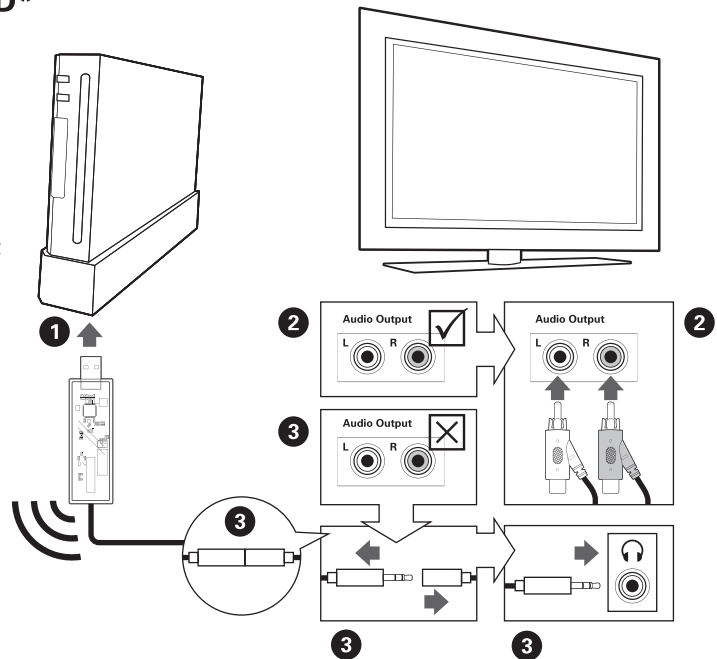


SET UP: NINTENDO Wii™

DIRECT TO TV CONNECTION METHOD*

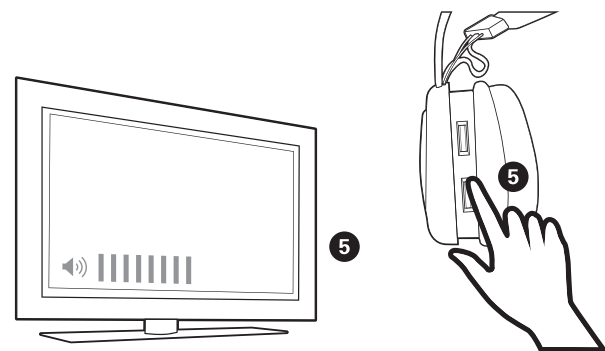
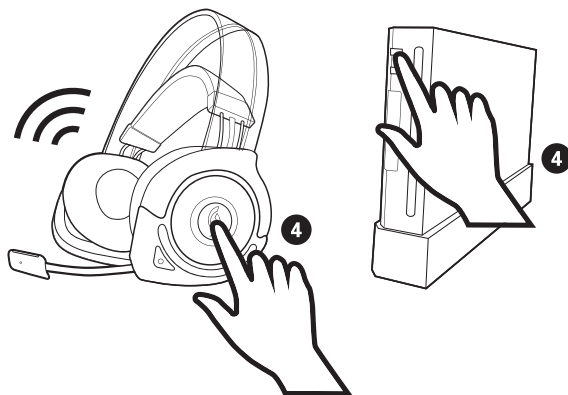
*Note: This setup may vary depending on the TV

1. Plug the Afterglow® USB transmitter into the front USB port of the Wii™ console.
2. Plug the RCA (Red/White) ends of transmitter's audio cable into the TV's Audio Out. Then skip to step 4.
3. If your TV does not have an RCA Audio Out, disconnect the RCA cable at its breakaway and expose the headphone jack. Plug the headphone jack of the USB transmitter into TV's headphone input.



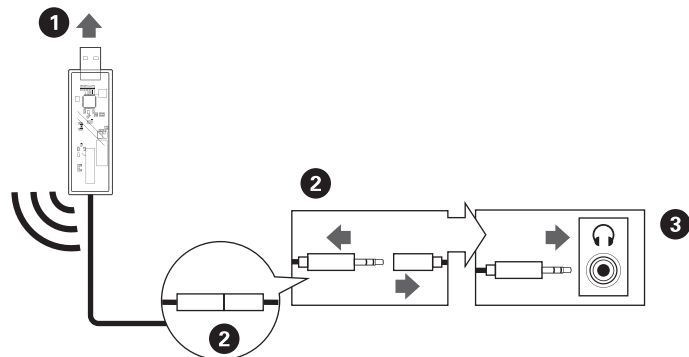
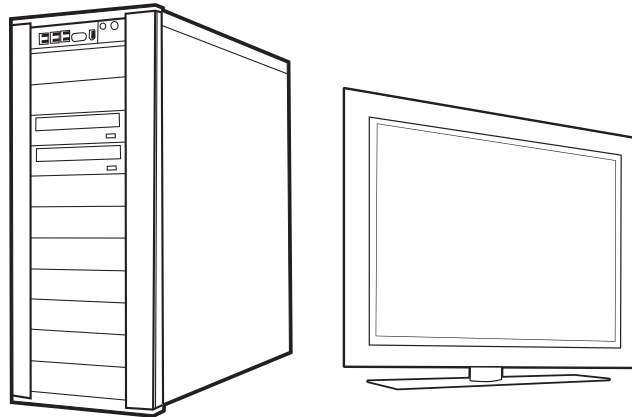
4. Turn the TV, console, and headset power ON.

5. Adjust the TV volume to a comfortable level first and then adjust the volume level on your headset.



SET UP: PC

1. Plug the Afterglow® USB transmitter into one of the USB ports of the PC/Mac.
2. Disconnect the RCA cable at its breakaway and expose the 3.5mm universal audio jack.
3. Connect the 3.5mm audio jack into the headphone input of your PC/Mac.



4. Adjust your PC/Mac volume to a comfortable level.

