

FCC CERTIFICATION TEST REPORT

For
FCC ID: X5B- PL7602E

Report Reference No..... : 15FAB04004 31

Date of issue : 2015-04-16

Testing Laboratory..... : ATT Product Service Co., Ltd.

Address..... : No. 3, ChangLianShan Industrial Park, ChangAn Town,
DongGuan City, GuangDong, China.

Applicant's name : PERFORMANCE DESIGNED PRODUCTS, LLC

Address..... : 14144 Ventura Blvd, Suite 200, Sherman Oaks, CA 91423
U.S.A

Manufacturer..... : PERFORMANCE DESIGNED PRODUCTS, LLC

Test specification:

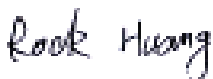
Test item description..... : Aferglow Wireless Controller for Wii

Trade Mark : --

Model/Type reference : PL-7602E

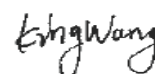
Ratings..... : I/P: DC 3V by battery supply (AA * 2Pcs)

Responsible Engineer



(Rock Huang/Engineer)

Approved by



(King Wang/EMC Manger)

TABLE OF CONTENTS

1. SUMMARY OF TEST RESULTS	5
2. GENERAL TEST INFORMATION	6
2.1. DESCRIPTION OF EUT	6
2.2. ACCESSORIES OF EUT	6
2.3. ASSISTANT EQUIPMENT USED FOR TEST	6
2.4. BLOCK DIAGRAM OF EUT CONFIGURATION FOR TEST	7
2.5. TEST ENVIRONMENT CONDITIONS	7
2.6. MEASUREMENT UNCERTAINTY	8
3. 20DB BANDWIDTH	9
3.1. TEST EQUIPMENT	9
3.2. BLOCK DIAGRAM OF TEST SETUP	9
3.3. TEST PROCEDURE	9
3.4. TEST RESULT	10
3.5. ORIGINAL TEST DATA	10
4. CARRIER FREQUENCY SEPARATION TEST	12
4.1.THE REQUIREMENT FOR SECTION 15.247(A)(1).....	12
4.2.EUT CONFIGURATION ON MEASUREMENT	12
4.3.OPERATING CONDITION OF EUT	12
4.4.TEST PROCEDURE	12
4.5.TEST RESULT	13
5. NUMBER OF HOPPING FREQUENCY TEST	15
5.1.THE REQUIREMENT FOR SECTION 15.247(A)(1)(III).....	15
5.2.EUT CONFIGURATION ON MEASUREMENT	15
5.3.OPERATING CONDITION OF EUT	15
5.4.TEST PROCEDURE	15
5.5.TEST RESULT	16
6. DWELL TIME TEST.....	17
6.1.THE REQUIREMENT FOR SECTION 15.247(A)(1)(III).....	17
6.2.EUT CONFIGURATION ON MEASUREMENT	17
6.3.OPERATING CONDITION OF EUT	17
6.4.TEST PROCEDURE	17
6.5.TEST RESULT	18
8. MAXMUM OUTPUT POWER	19
8.1TEST EQUIPMENT	19

8.2BLOCK DIAGRAM OF TEST SETUP	19
8.3LIMITS	19
8.4TEST PROCEDURE	20
8.5TEST RESULT	20
8.6ORIGINAL TEST DATA.....	21
9.SPURIOUS EMISSION.....	23
9.1 TEST EQUIPMENT	23
9.2 BLOCK DIAGRAM OF TEST SETUP	23
9.3LIMIT	25
9.4 TEST PROCEDURE	26
9.5 TEST RESULT	28
10.BAND EDGE	31
10.1TEST EQUIPMENT.....	31
10.2 BLOCK DIAGRAM OF TEST SETUP	31
10.3LIMIT	32
10.4TEST PROCEDURE	32
10.5TEST RESULT.....	32
11.ANTENNA REQUIREMENTS.....	34
11.1 LIMIT	34
11.2 RESULT.....	34
12 TEST SETUP PHOTOGRAPH.....	35
12 PHOTOS OF THE EUT	36

TEST REPORT DECLARE

Applicant	:	PERFORMANCE DESIGNED PRODUCTS, LLC
Address	:	14144 Ventura Blvd,Suite 200,Sherman Oaks,CA 91423 U.S.A
Equipment under Test	:	Aferglow Wireless Controller for Wii
Model No	:	PL-7602E
FCC ID	:	X5B- PL7602E
Manufacturer	:	PERFORMANCE DESIGNED PRODUCTS, LLC
Address	:	14144 Ventura Blvd,Suite 200,Sherman Oaks,CA 91423 U.S.A

Test Standard Used: FCC Rules and Regulations Part 15 Subpart C: 2013

Test procedure used: ANSI C63.4: 2009, ANSI C63.10: 2013,

We Declare:

The equipment described above is tested by ATT Product Service Co., Ltd and in the configuration tested the equipment complied with the standards specified above. The test results are contained in this test report and ATT Product Service Co., Ltd is assumed of full responsibility for the accuracy and completeness of these tests.

After test and evaluation X/Y/Z axis of the EUT. will record worst case in this report. our opinion is that the equipment provided for test compliance with the requirement of the above FCC standards.

Report No:	15FAB04004 31		
Date of Test:	2015-04-01 to 2015-04-15	Date of Report:	2015-04-16

Note: This report applies to above tested sample only. This report shall not be reproduced in parts without written approval of ATT Product Service Co., Ltd

1. SUMMARY OF TEST RESULTS

The EUT have been tested according to the applicable standards as referenced below.		
Description of Test Item	Standard	Results
20dB Bandwidth	FCC Part 15: 15.247	PASS
Carrier Frequency Separation Test	FCC Part 15: 15.247	PASS
Number Of Hopping Frequency	FCC Part 15: 15.247	PASS
Dwell Time Test	FCC Part 15: 15.247	PASS
Peak Output Power	FCC Part 15: 15.247	PASS
Band Edge	FCC Part 15: 15.247	PASS
Spurious Emission	FCC Part 15.205/15.209	PASS
Antenna requirement	FCC Part 15: 15.203	PASS
Conducted Emission	FCC Part 15.207	N/A

Note: N/A: the EUT was powered by DC battery in normal use condition

2. GENERAL TEST INFORMATION

2.1. DESCRIPTION OF EUT

EUT* Name	:	Aferglow Wireless Controller for Wii
Model Number	:	PL-7602E
EUT function description	:	Please reference user manual of this device
Power supply	:	DC 3V by battery supply (AA * 2Pcs)
Radio Technology	:	2.4GHz ISM band
Operation frequency	:	2402-2480MHz
Modulation	:	GFSK
Antenna Type	:	built-in antenna, maximum PK gain:2.32dBi
Date of Receipt	:	2015-04-01
Sample Type	:	Single production

Note1: EUT is the ab. of equipment under test.

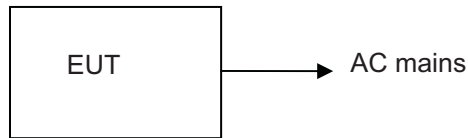
2.2. ACCESSORIES OF EUT

Description of Accessories	Manufacturer	Model number or Type	Output.
/	/	/	/

2.3. ASSISTANT EQUIPMENT USED FOR TEST

Description of Assistant equipment	Manufacturer	Model number or Type	EMC Compliance	SN
Notebook	lenovo	2743	FCC DOC approved	2743NCC

2.4. BLOCK DIAGRAM OF EUT CONFIGURATION FOR TEST



EUT was connected to control to a special test jig provided by manufacturer which has a Micro USB connector to connect to Notebook, and the Notebook will run a special test software to control EUT work in Continuous TX mode, and select test channel, wireless mode and data rate.

Tested mode, channel, and data rate information			
Mode	data rate (Mbps) (see Note)	Channel	Frequency (MHz)
GFSK	1	Low :CH0	2402
	1	Middle: CH39	2441
	1	High: CH78	2480
Note: 1.According exploratory test, EUT will have maximum output power in those data rate, so those data rate were used for all test. 2. New battery is used during all test.			

2.5. TEST ENVIRONMENT CONDITIONS

During the measurement the environmental conditions were within the listed ranges:

Temperature range:	21-25°C
Humidity range:	40-75%
Pressure range:	86-106kPa

2.6. MEASUREMENT UNCERTAINTY

Test Item	Uncertainty
Uncertainty for Conduction emission test	2.44dB
Uncertainty for Radiation Emission test (9KHz-30MHz)	3.21dB
Uncertainty for Radiation Emission test (30MHz-200MHz)	3.42 dB (Polarize: V)
	3.52 dB (Polarize: H)
Uncertainty for Radiation Emission test (200MHz-1GHz)	3.52 dB (Polarize: V)
	3.54 dB (Polarize: H)
Uncertainty for Radiation Emission test (1GHz to 25GHz)	4.20 dB (Polarize: V)
	4.20 dB (Polarize: H)
Uncertainty for radio frequency	1×10 ⁻⁹
Uncertainty for conducted RF Power	0.65dB

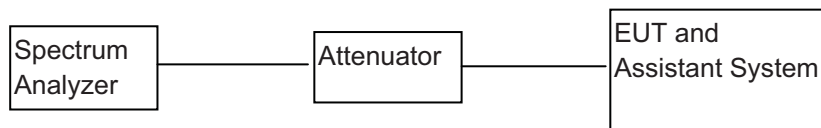
Note: This uncertainty represents an expanded uncertainty expressed at approximately the 95% confidence level using a coverage factor of k=2.

3. 20dB BANDWIDTH

3.1. TEST EQUIPMENT

Item	Equipment	Manufacturer	Model No.	Serial No.	Cal Due.	Cal. Interval
1	Spectrum analyzer	R&S	FSU	1166.1660.26	2015/12/25	1 Year
2	Attenuator	Mini-Circuits	BW-S10W2	101109	2015/12/26	1 Year
3	RF Cable	Micable	C10-01-01-1	100309	2015/12/26	1 Year

3.2. BLOCK DIAGRAM OF TEST SETUP



3.3. TEST PROCEDURE

- (1) Configure EUT and assistant system according clause 2.4 and 3.2
- (2) Connect EUT's antenna output to spectrum analyzer by RF cable.
- (3) Configure EUT work in test mode as stated in clause 2.4.
- (4) Set the spectrum analyzer as follows:

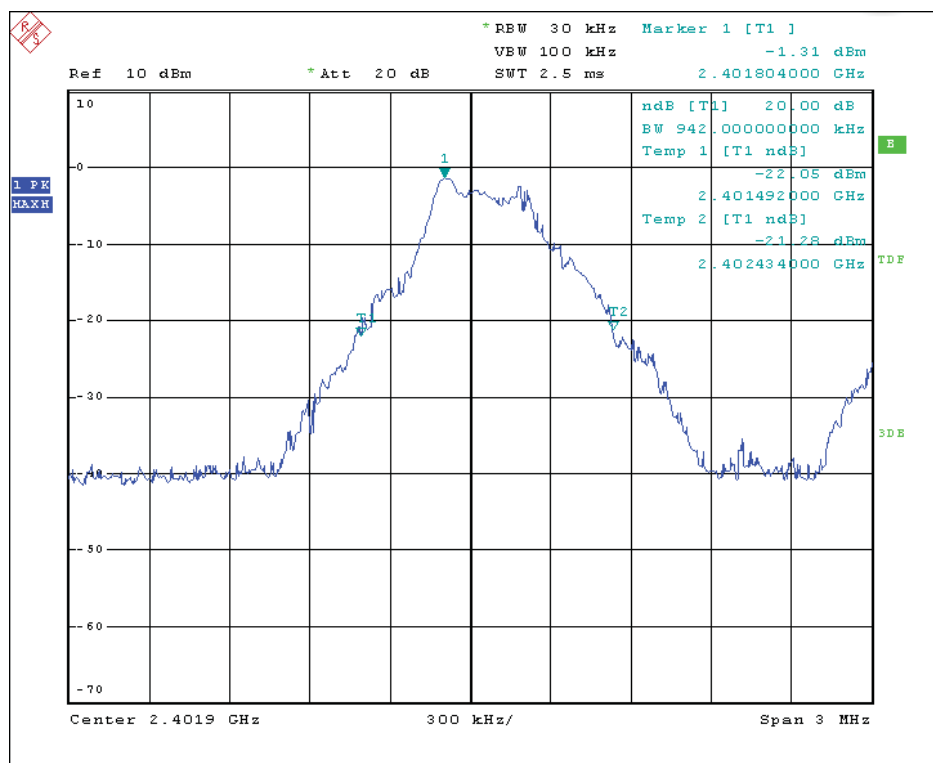
RBW:	30KHz
VBW:	100KHz
Detector Mode:	Peak
Sweep time:	auto
Trace mode:	Max hold

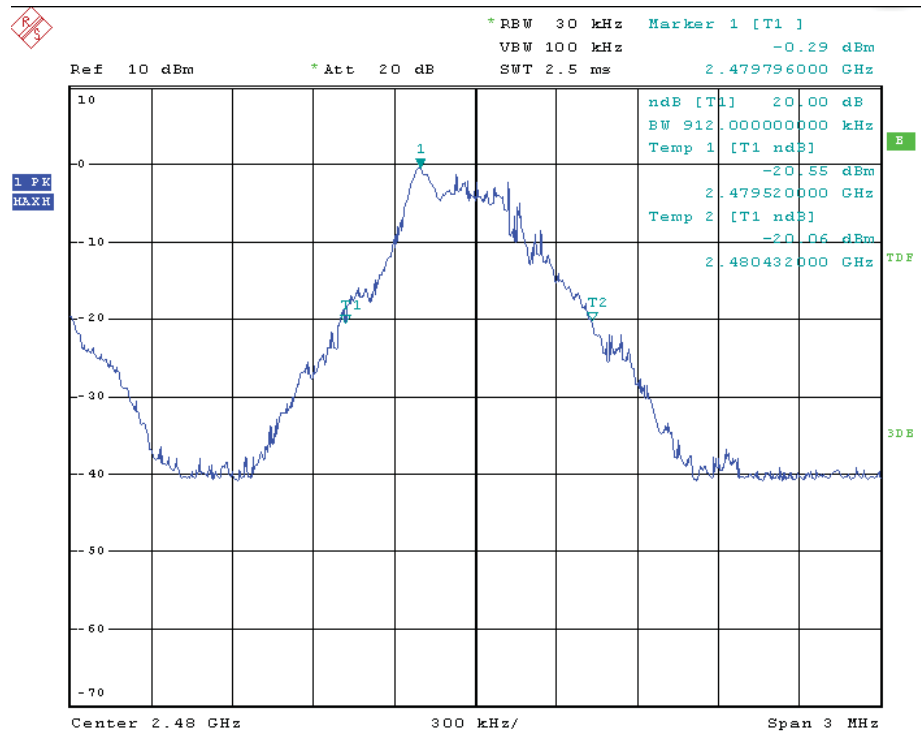
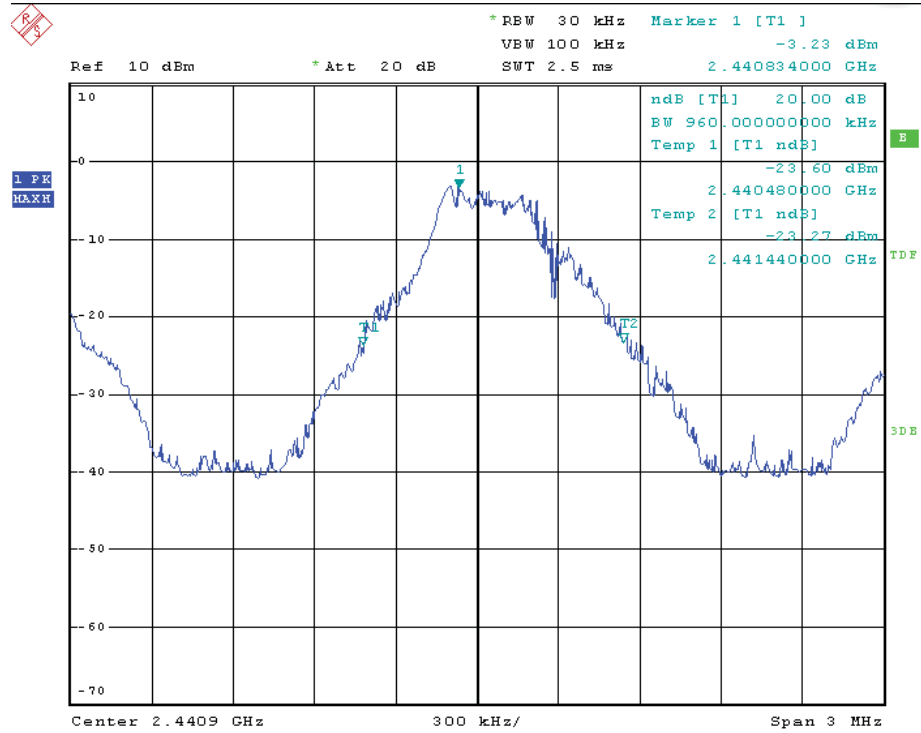
- (5) Allow the trace to stabilize, measure the maximum width of the emission that is constrained by the frequencies associated with the two outermost amplitude points (upper and lower frequencies) that are attenuated by 20 dB relative to the maximum level measured in the fundamental emission.

3.4. TEST RESULT

Channel	Frequency (MHz)	20dB Bandwidth (MHz)	Result
Low	2402	0.942	Pass
Middle	2441	0.96	Pass
High	2480	0.912	Pass

3.5. ORIGINAL TEST DATA





4. CARRIER FREQUENCY SEPARATION TEST

4.1. THE REQUIREMENT FOR SECTION 15.247(A)(1)

Section 15.247(a)(1): Frequency hopping systems shall have hopping channel carrier frequencies separated by a minimum of 25 kHz or the 20 dB bandwidth of the hopping channel, whichever is greater. Alternatively, frequency hopping systems operating in the 2400-2483.5 MHz band may have hopping channel carrier frequencies that are separated by 25 kHz or two-thirds of the 20 dB bandwidth of the hopping channel, whichever is greater, provided the systems operate with an output power no greater than 125 mW. The system shall hop to channel frequencies that are selected at the system hopping rate from a pseudorandomly ordered list of hopping frequencies. Each frequency must be used equally on the average by each transmitter. The system receivers shall have input bandwidths that match the hopping channel bandwidths of their corresponding transmitters and shall shift frequencies in synchronization with the transmitted signals.

4.2. EUT CONFIGURATION ON MEASUREMENT

The equipment are installed on the emission measurement to meet the commission requirements and operating regulations in a manner which tends to maximize its emission characteristics in normal application.

4.3. OPERATING CONDITION OF EUT

- (1) Setup the EUT and simulator as shown as Section 6.1.
- (2) Turn on the power of all equipment.
- (3) Let the EUT work in TX (Hopping on) modes measure it. The transmit frequency are 2402-2480MHz.
We select 2402MHz, 2441MHz, and 2480MHz TX frequency to transmit.

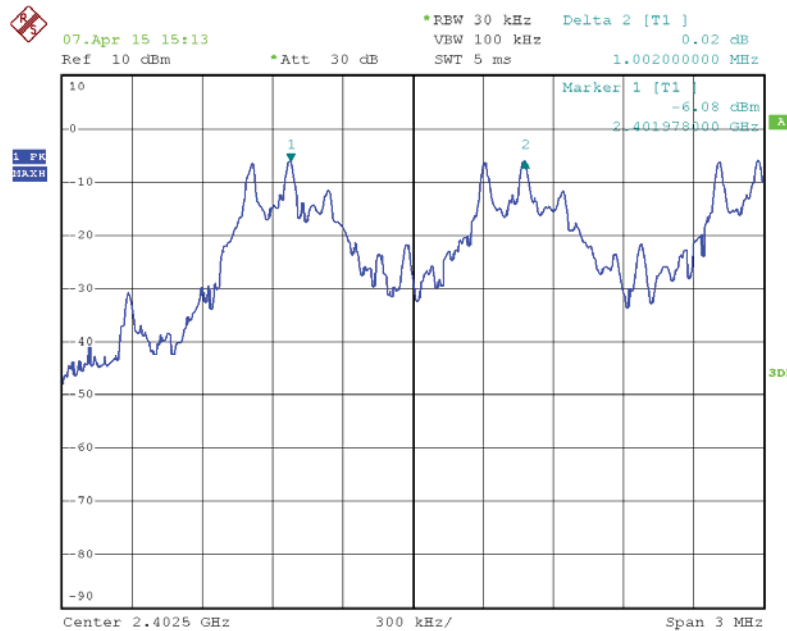
4.4. TEST PROCEDURE

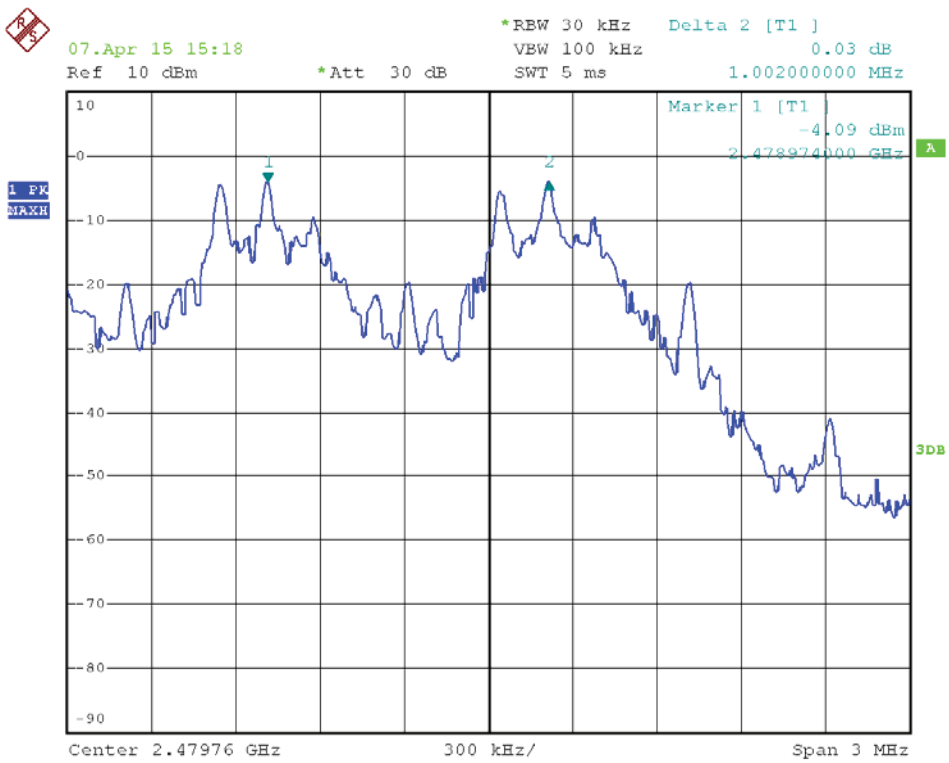
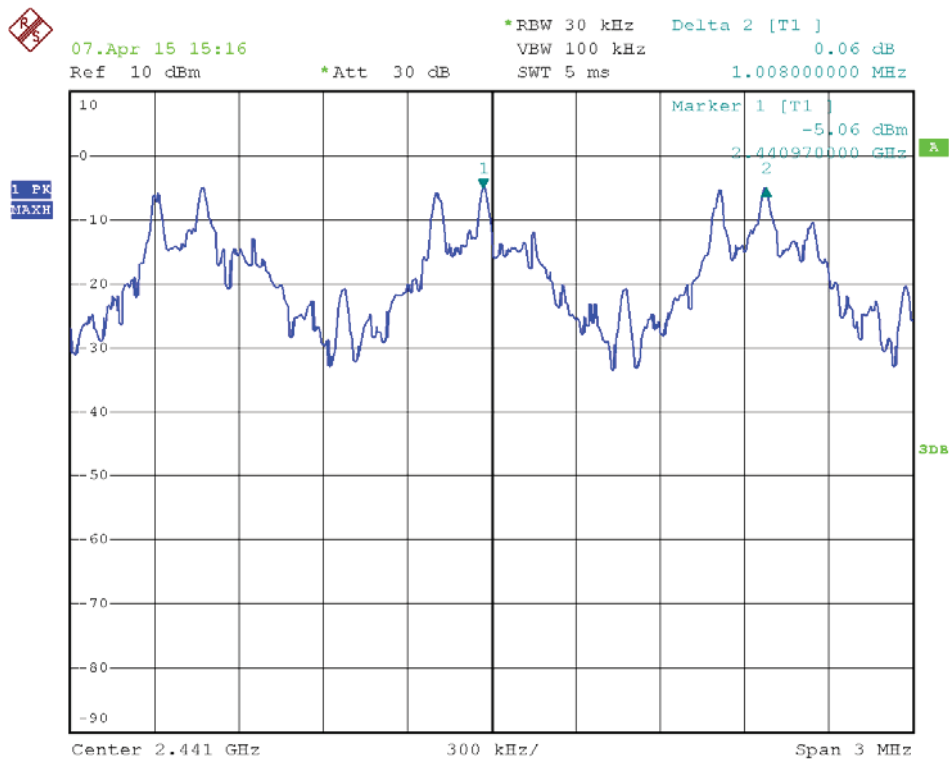
- (1) The transmitter output was connected to the spectrum analyzer through a low loss cable.
- (2) .Set RBW of spectrum analyzer to 100 kHz and VBW to 300 kHz. Adjust Span to 3 MHz.
- (3) Set the adjacent channel of the EUT maxhold another trace.
- (4) Measurement the channel separation

4.5.TEST RESULT

Channel	Frequency (MHz)	Channel Separation(MHz)	Limit (MHz)	Result
Low	2402	1.002	25KHz or 2/3*20dB bandwidth	PASS
Middle	2441	1.008	25KHz or 2/3*20dB bandwidth	PASS
High	2479	1.002	25KHz or 2/3*20dB bandwidth	PASS

The spectrum analyzer plots are attached as below.





5. NUMBER OF HOPPING FREQUENCY TEST

5.1.THE REQUIREMENT FOR SECTION 15.247(a)(1)(iii)

Section 15.247(a)(1)(iii): Frequency hopping systems in the 2400-2483.5 MHz band shall use at least 15 channels.

5.2.EUT CONFIGURATION ON MEASUREMENT

The equipment are installed on the emission measurement to meet the commission requirements and operating regulations in a manner which tends to maximize its emission characteristics in normal application.

5.3.OPERATING CONDITION OF EUT

- (1) Setup the EUT and simulator as shown as Section 7.1.
- (2) Turn on the power of all equipment.
- (3) Let the EUT work in TX (Hopping on) modes measure it.

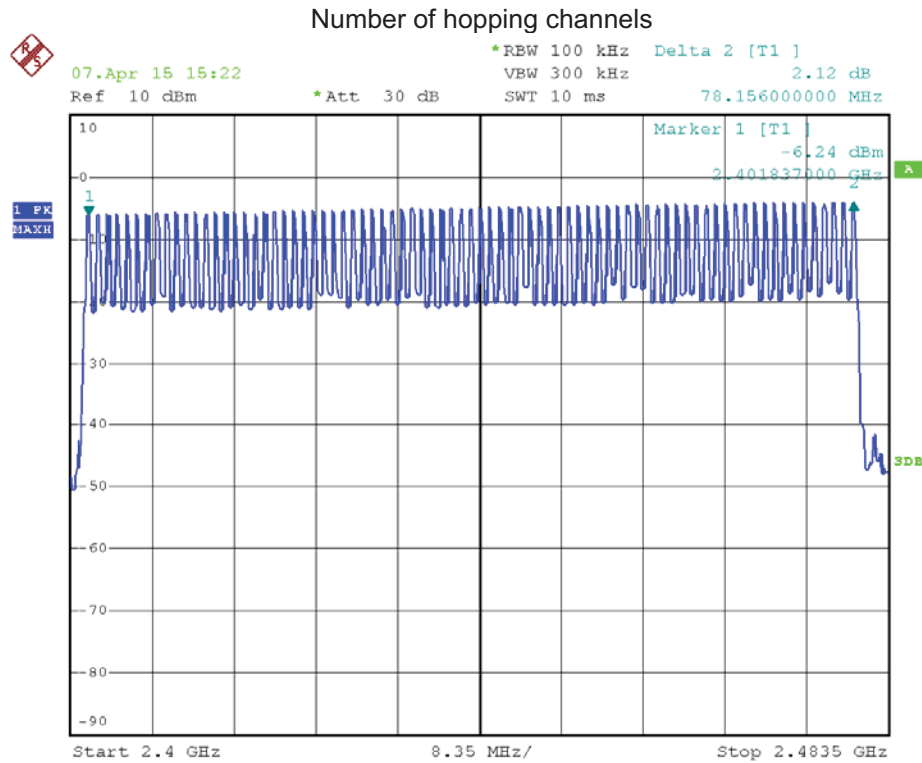
5.4.TEST PROCEDURE

- (1) The transmitter output was connected to the spectrum analyzer through a low loss cable.
- (2) Set the spectrum analyzer as Span=83.5MHz, RBW=100 kHz, VBW=300 kHz.
- (3) Max hold, view and count how many channel in the band.

5.5.TEST RESULT

Total number of hopping channel	Measurement result(CH)	Limit(CH)
	79	≥15

The spectrum analyzer plots are attached as below



Channle information

CH	Frequency	CH	Frequency	CH	Frequency	CH	Frequency	CH	Frequency
0	2402	16	2418	32	2434	48	2450	64	2466
1	2403	17	2419	33	2435	49	2451	65	2467
2	2404	18	2420	34	2436	50	2452	66	2468
3	2405	19	2421	35	2437	51	2453	67	2469
4	2406	20	2422	36	2438	52	2454	68	2470
5	2407	21	2423	37	2439	53	2455	69	2471
6	2408	22	2424	38	2440	54	2456	70	2472
7	2409	23	2425	39	2441	55	2457	71	2473
8	2410	24	2426	40	2442	56	2458	72	2474
9	2411	25	2427	41	2443	57	2459	73	2475
10	2412	26	2428	42	2444	58	2460	74	2476
11	2413	27	2429	43	2445	59	2461	75	2477
12	2414	28	2430	44	2446	60	2462	76	2478
13	2415	29	2431	45	2447	61	2463	77	2479
14	2416	30	2432	46	2448	62	2464	78	2480
15	2417	31	2433	47	2449	63	2465	-	-

6. DWELL TIME TEST

6.1. THE REQUIREMENT FOR SECTION 15.247(a)(1)(iii)

Section 15.247(a)(1)(iii): Frequency hopping systems in the 2400-2483.5 MHz band shall use at least 15 channels. The average time of occupancy on any channel shall not be greater than 0.4 seconds within a period of 0.4 seconds multiplied by the number of hopping channels employed. Frequency hopping systems may avoid or suppress transmissions on a particular hopping frequency provided that a minimum of 15 channels are used.

6.2. EUT CONFIGURATION ON MEASUREMENT

The equipment are installed on the emission measurement to meet the commission requirements and operating regulations in a manner which tends to maximize its emission characteristics in normal application.

6.3. OPERATING CONDITION OF EUT

- (1) Setup the EUT and simulator as shown as Section 8.1.
- (2) Turn on the power of all equipment.
- (3) Let the EUT work in TX (Hopping on) modes measure it. The transmit frequency are 2402-2480MHz.
We select 2402MHz, 2441MHz, and 2480MHz TX frequency to transmit.

6.4. TEST PROCEDURE

- (1) The transmitter output was connected to the spectrum analyzer through a low loss cable.
- (2) Set center frequency of spectrum analyzer = operating frequency.
- (3) Set the spectrum analyzer as RBW=1MHz, VBW=3MHz, Span=0Hz, Adjust Sweep=5ms, 10ms, 15ms.
Get the pulse time.

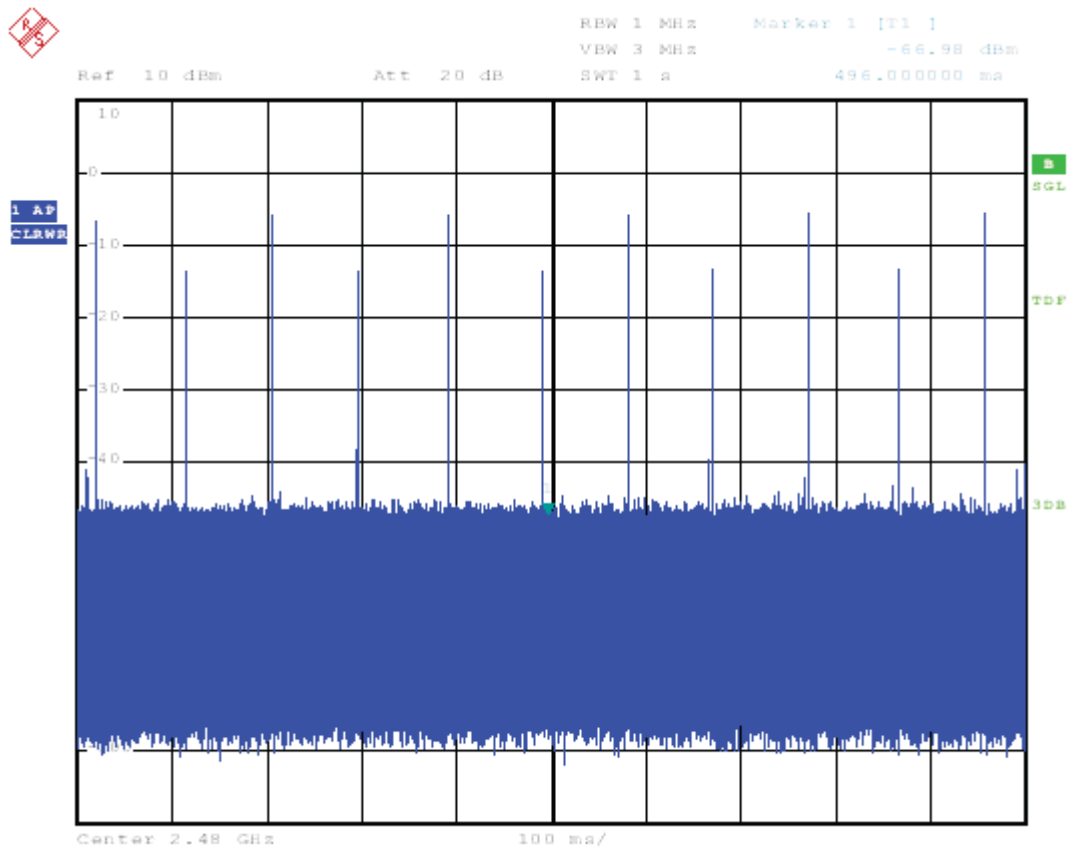
6.5. TEST RESULT

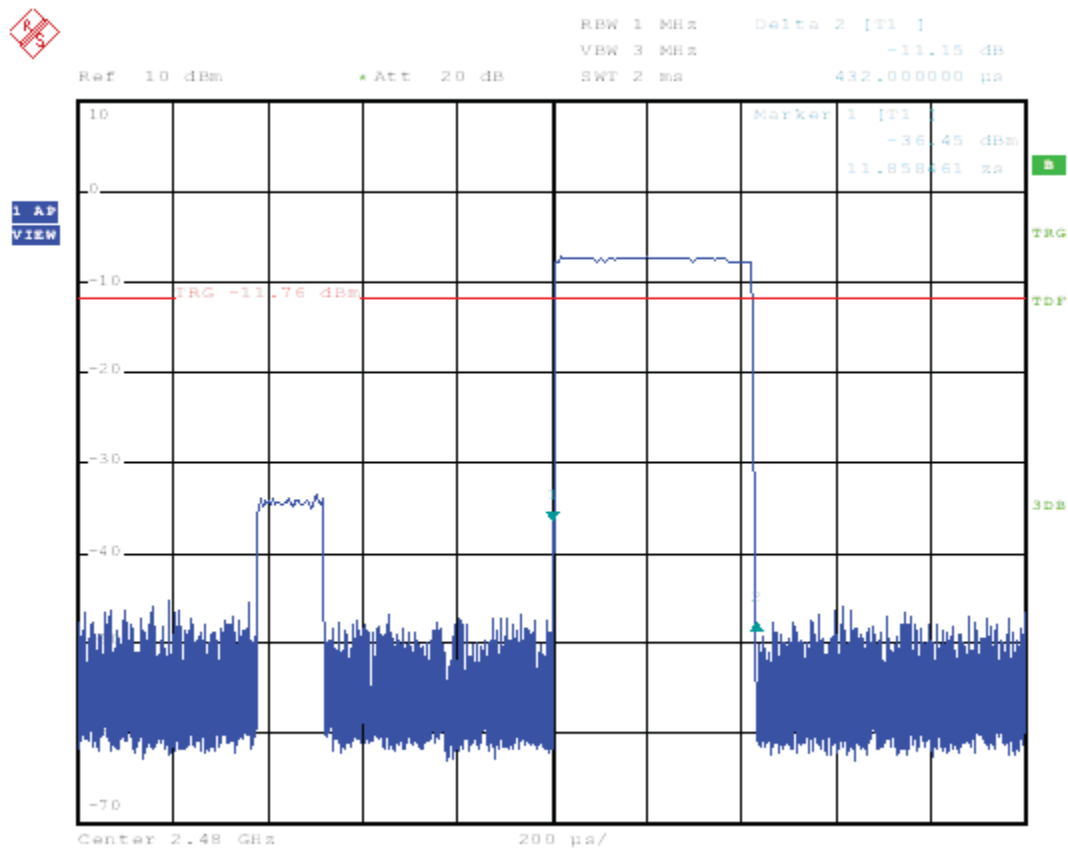
Duty Cycle Correction During 1 Sec

Each sample unit sends a different series of characters, but each pulse period (1 Sec) never exceeds a series of 11 sole (0.432msec) pulses. Assuming any combination of sole pulses may be obtained due to encoding the worst case transmit duty cycle would be considered $11 \times 0.432\text{msec}$ per Sec is 4.752msec. Figure A through B show the characteristics of the pulse train for one of these functions.

DWELL TIME = $4.752 \times 31.6 = 150.2\text{ms} < 400\text{ms}$

The following figures showed the characteristics of the pulse train for one of these functions.





8. MAXMUM OUTPUT POWER

8.1 TEST EQUIPMENT

Same with 3.1

8.2 BLOCK DIAGRAM OF TEST SETUP

Same with 3.2

8.3 LIMITS

For systems using digital modulation in the 902-928 MHz, 2400-2483.5 MHz bands: 1 Watt. If transmitting antennas of directional gain greater than 6 dBi are used, the conducted output power from the intentional radiator shall be reduced below the stated values as appropriate, by the amount in dB that the directional gain of the antenna exceeds 6 dBi.

8.4 TEST PROCEDURE

- (1) Configure EUT and assistant system according clause 2.4 and 3.2
- (2) Connect EUT's antenna output to spectrum analyzer by RF cable.
- (3) Configure EUT work in test mode as stated in clause 2.4.
- (4) Set the spectrum analyzer as follows:

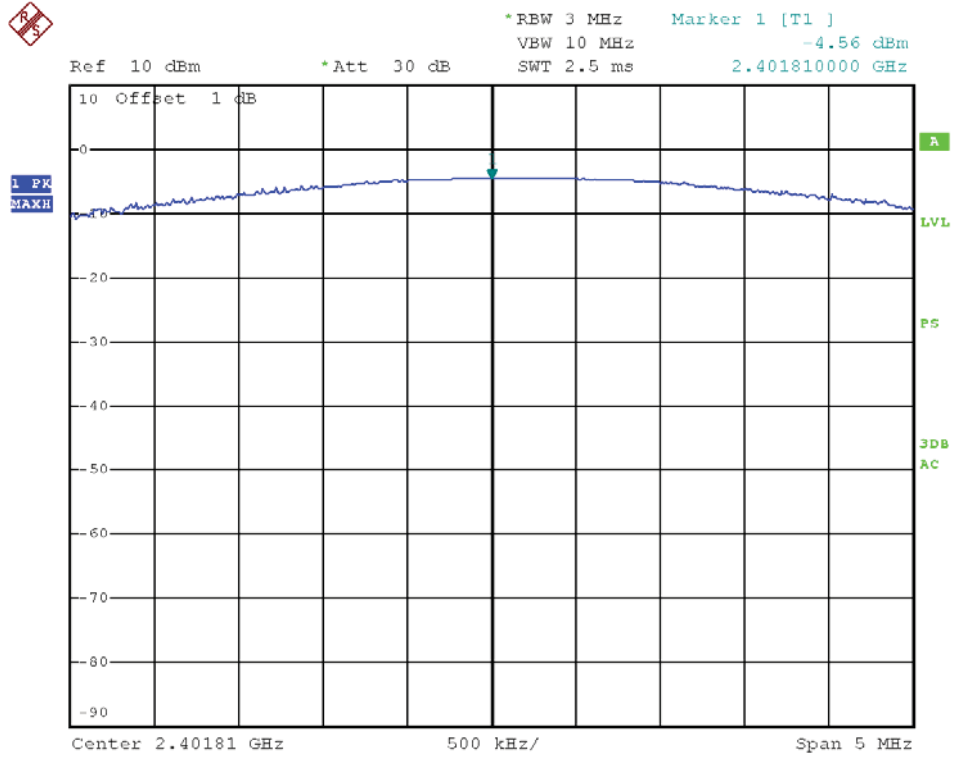
RBW:	3MHz
VBW:	10MHz
Span	>1.5x 20dB bandwidth
Detector Mode:	Peak
Sweep time:	auto
Trace mode	Max hold

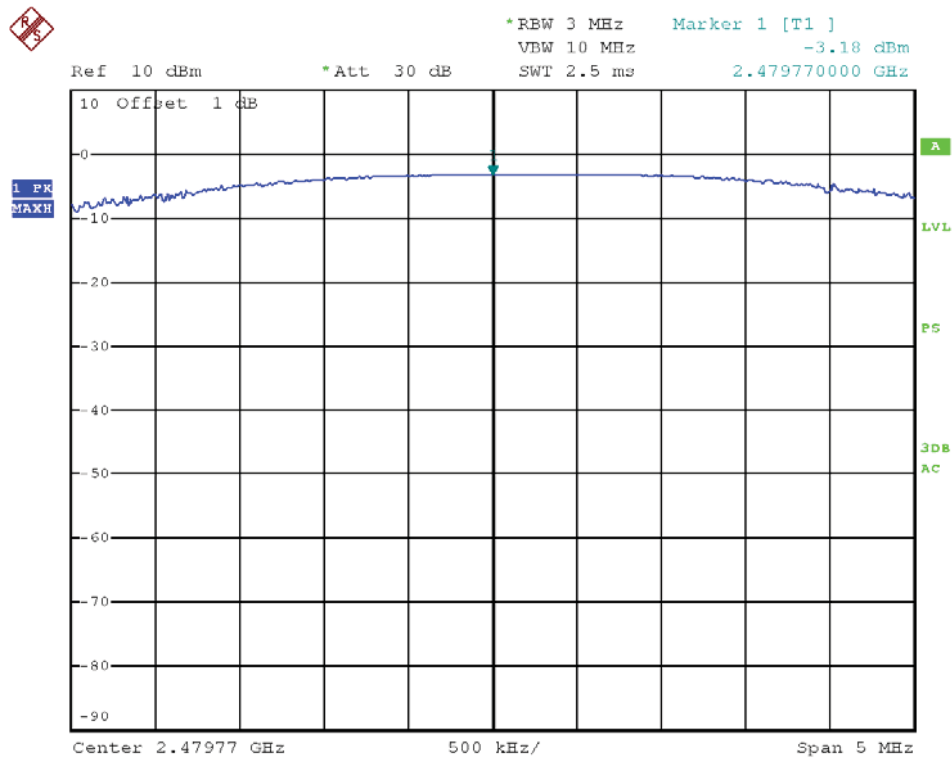
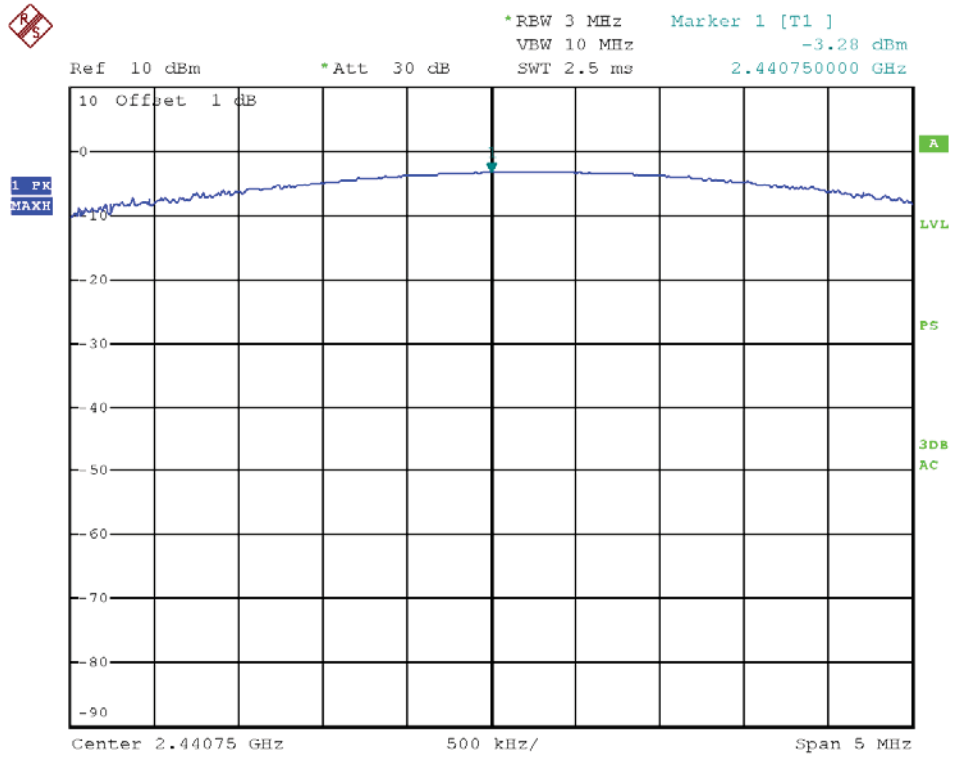
- (5) Allow the trace to stabilize, Use the instrument's band/channel power measurement function with the band limits set equal to the DTS bandwidth edges measure out the Average and PK output power.

8.5 TEST RESULT

EUT Set Mode	Data Rate (Mbps)	Frequency (MHz)	Result(dBm)
			Peak
Tx	1	2402	-4.56
		2441	-3.28
		2480	-3.18
Limit: 21dBm		Conclusion: PASS	

8.6 ORIGINAL TEST DATA





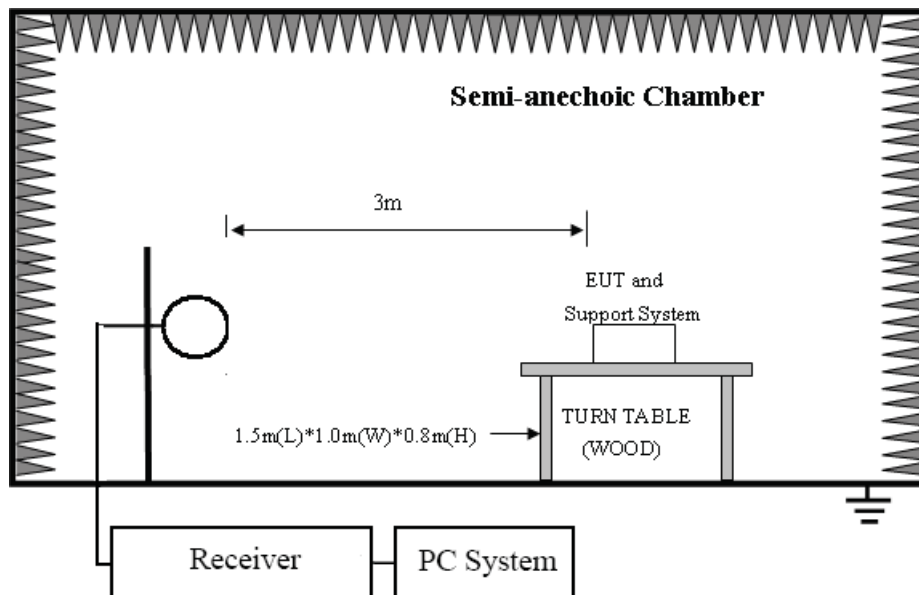
9.SPURIOUS EMISSION

9.1 TEST EQUIPMENT

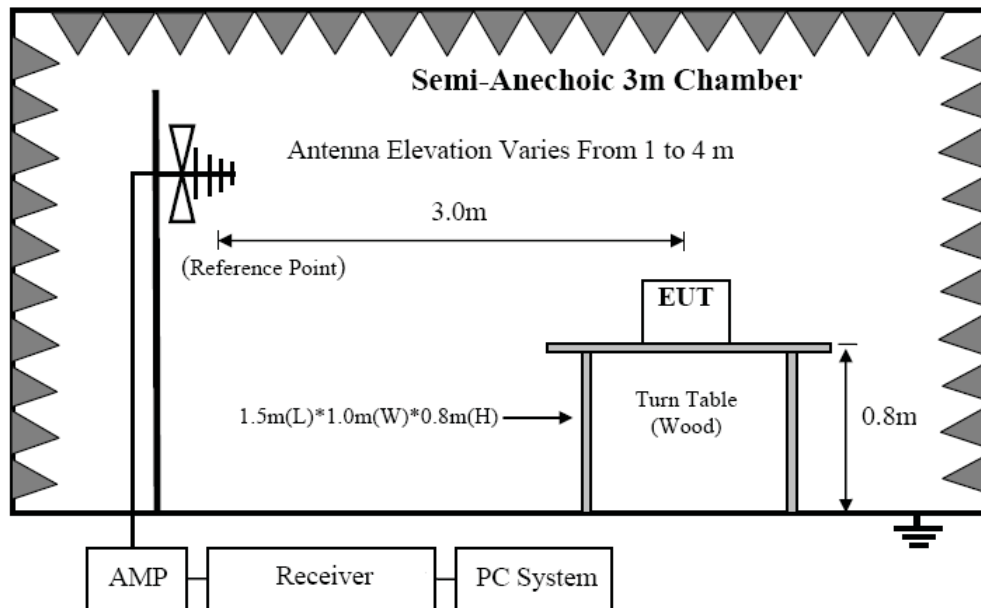
Item	Equipment	Manufacturer	Model No.	Serial No.	Cal Due.	Cal. Interval
1	EMI Test Receiver	R&S	ESU8	100316	2015/12/26	1 Year
2	Spectrum analyzer	R&S	FSU	1166.1660.26	2015/07/13	1 Year
3	Loop antenna	TESEQ	HLA6120	20129	2015/12/26	1 Year
4	Trilog Broadband Antenna	Schwarzbeck	VULB9163	9163-462	2015/12/26	1 Year
5	Double Ridged Horn Antenna	R&S	HF907	100276	2015/12/26	1 Year
6	Horn Antenna	EMCO	3116	00060095	2015/12/26	1 Year
7	Pre-amplifier	A.H.	PAM-1840VH	562	2015/12/26	1 Year
8	Pre-amplifier	R&S	AFS33-18002 650-30-8P-44	SEL0080	2015/12/26	1 Year
9	RF Cable	R&S	R01	10403	2015/12/26	1 Year
10	RF Cable	R&S	R02	10512	2015/12/26	1 Year

9.2 BLOCK DIAGRAM OF TEST SETUP

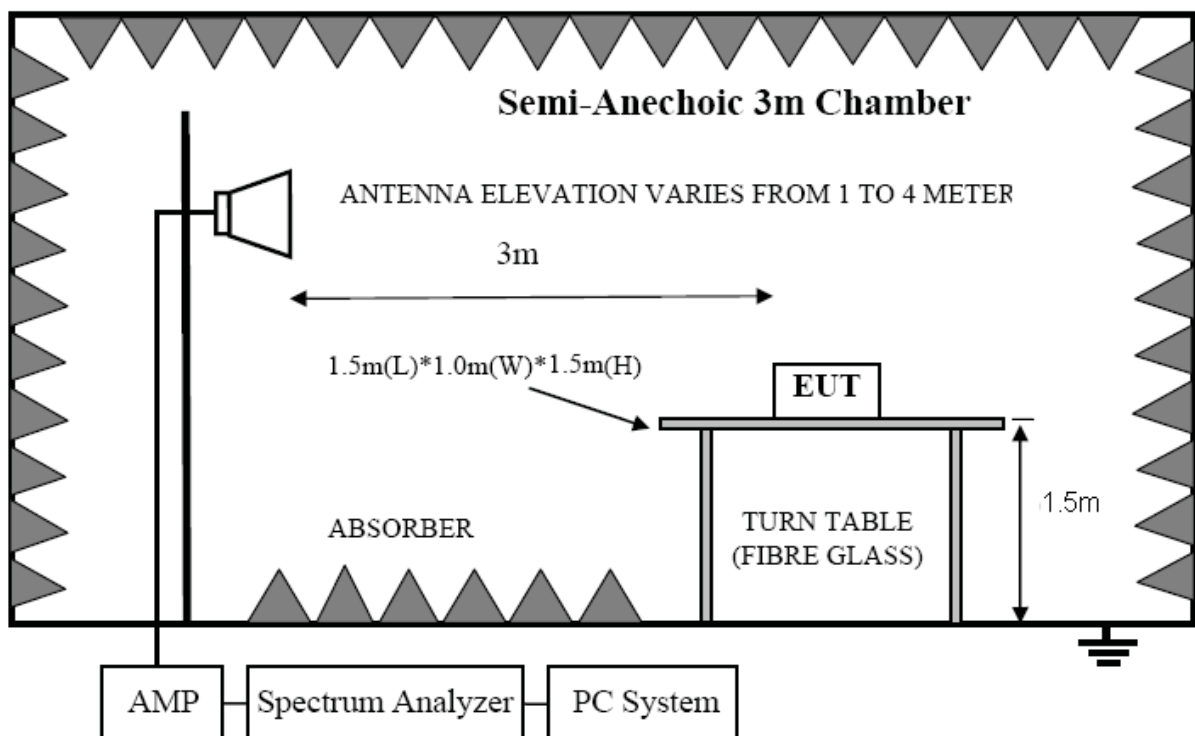
In 3m Anechoic Chamber Test Setup Diagram for 9KHz-30MHz



In 3m Anechoic Chamber Test Setup Diagram for 30MHz-1GHz



In 3m Anechoic Chamber Test Setup Diagram for frequency above 1GHz



Note: For harmonic emissions test a appropriate high pass filter was inserted in the input port of AMP.

9.3LIMIT

9.3.1 FCC 15.205 Restricted frequency band

MHz	MHz	MHz	GHz
0.090 - 0.110	16.42 - 16.423	399.9 - 410	4.5 - 5.15
¹ 0.495 - 0.505	16.69475 - 16.69525	608 - 614	5.35 - 5.46
2.1735 - 2.1905	16.80425 - 16.80475	960 - 1240	7.25 - 7.75
4.125 - 4.128	25.5 - 25.67	1300 - 1427	8.025 - 8.5
4.17725 - 4.17775	37.5 - 38.25	1435 - 1626.5	9.0 - 9.2
4.20725 - 4.20775	73 - 74.6	1645.5 - 1646.5	9.3 - 9.5
6.215 - 6.218	74.8 - 75.2	1660 - 1710	10.6 - 12.7
6.26775 - 6.26825	108 - 121.94	1718.8 - 1722.2	13.25 - 13.4
6.31175 - 6.31225	123 - 138	2200 - 2300	14.47 - 14.5
8.291 - 8.294	149.9 - 150.05	2310 - 2390	15.35 - 16.2
8.362 - 8.366	156.52475 - 156.52525	2483.5 - 2500	17.7 - 21.4
8.37625 - 8.38675	156.7 - 156.9	2690 - 2900	22.01 - 23.12
8.41425 - 8.41475	162.0125 - 167.17	3260 - 3267	23.6 - 24.0
12.29 - 12.293	167.72 - 173.2	3332 - 3339	31.2 - 31.8
12.51975 - 12.52025	240 - 285	3345.8 - 3358	36.43 - 36.5
12.57675 - 12.57725	322 - 335.4	3600 - 4400	(²)

9.3.2 FCC 15.209 Limit.

FREQUENCY MHz	DISTANCE Meters	FIELD STRENGTHS LIMIT	
		μV/m	dB(μV)/m
0.009 ~ 0.490	300	2400/F(KHz)	67.6-20log(F)
0.490 ~ 1.705	30	24000/F(KHz)	87.6-20log(F)
1.705 ~ 30.0	30	30	29.54
30 ~ 88	3	100	40.0
88 ~ 216	3	150	43.5
216 ~ 960	3	200	46.0
960 ~ 1000	3	500	54.0
Above 1000	3	74.0 dB(μV)/m (Peak) 54.0 dB(μV)/m (Average)	

Note: (1) The emission limits shown in the above table are based on measurements employing a CISPR QP detector except for the frequency bands 9-90KHz, 110-490KHz and above 1000MHz. Radiated emissions limits in these three bands are based on measurements employing an average detector.

(2) At frequencies below 30MHz, measurement may be performed at a distance closer than that specified, and the limit at closer measurement distance can be extrapolated by below formula:

$$\text{Limit}_{3m}(\text{dBuV/m}) = \text{Limit}_{30m}(\text{dBuV/m}) + 40\text{Log}(30m/3m)$$

9.3.3 Limit for this EUT

All the emissions appearing within 15.205 restricted frequency bands shall not exceed the limits shown in 15.209, all the other emissions shall be at least 30dB below the fundamental emissions, or comply with 15.209 limits.

9.4 TEST PROCEDURE

- (1) EUT was placed on a non-metallic table, 80 cm for below 1G or 1.5m for above 1G above the ground plane inside a semi-anechoic chamber.
- (2) Setup EUT and assistant system according clause 2.4 and 7.2
- (3) Test antenna was located 3m from the EUT on an adjustable mast, and the antenna used as below table.

Test frequency range	Test antenna used
9KHz-30MHz	Active Loop antenna
30MHz-1GHz	Trilog Broadband Antenna
1GHz-18GHz	Double Ridged Horn Antenna(1GHz-18GHz)
18GHz-40GHz	Horn Antenna(18GHz-40GHz)

According ANSI C63.10:2013 clause 6.4.4.2 and 6.5.3, for measurements below 30 MHz, the loop antenna was positioned with its plane vertical from the EUT and rotated about its vertical axis for maximum response at each azimuth position around the EUT. And the loop antenna also be positioned with its plane horizontal at the specified distance from the EUT. The center of the loop is 1 m above the ground. for measurement above 30MHz, the Trilog Broadband Antenna or Horn Antenna was located 3m from EUT, Measurements were made with the antenna positioned in both the horizontal and vertical planes of Polarization, and the measurement antenna was varied from 1 m to 4 m. in height above the reference ground plane to obtain the maximum signal strength.

- (4) Below pre-scan procedure was first performed in order to find prominent frequency spectrum radiated emissions from 9KHz to 25GHz:
 - (a) Scanning the peak frequency spectrum with the antenna specified in step (3), and the EUT was rotated X,Y,Z three axis , the antenna height was varied from 1m to 4m(Except loop antenna, it's fixed 1m above ground.) ,only worst case is reported.
 - (b) Change work frequency or channel of device if practicable.
 - (c) Change modulation type of device if practicable.
 - (d) Change power supply range from 85% to 115% of the rated supply voltage
 - (e) Rotated EUT though three orthogonal axes to determine the attitude of EUT arrangement produces highest emissions.

Spectrum frequency from 9KHz to 25GHz (tenth harmonic of fundamental frequency) was investigated, and no any obvious emission were detected from 18GHz to 25GHz, so below final test was performed with frequency range from 9KHz to 18GHz.

- (5) For final emissions measurements at each frequency of interest, the EUT was rotated and the antenna height was varied between 1m and 4m in order to maximize the emission. Measurements in both horizontal and vertical polarities were made and the data was recorded. In order to find the maximum emission, the relative positions of equipments and all of the interface cables were changed according to ANSI C63.10 2013 on Radiated Emission test.
- (6) The emissions from 9KHz to 1GHz were measured based on CISPR QP detector except for the frequency bands 9-90KHz, 110-490KHz, for emissions from 9KHz-90KHz,110KHz-490KHz and above 1GHz were measured based on average detector, for emissions above 1GHz, peak emissions also be measured and need comply with Peak limit.
- (7) The emissions from 9KHz to 1GHz, QP or average values were measured with EMI receiver with below RBW

Frequency band	RBW
9KHz-150KHz	200Hz
150KHz-30MHz	9KHz
30MHz-1GHz	120KHz

- (8) For emissions above 1GHz, both Peak and Average level were measured with Spectrum Analyzer, and the RBW is set at 1MHz, VBW is set at 3MHz for Peak measure; RBW is set at 1MHz, VBW is set at 10Hz for Average measure(according ANSI C63.10:2013 clause 4.2.3.2.3 procedure for average measure). Peak detector is used for Peak and AV measurement both.

9.5 TEST RESULT

PASS. (See below detailed test result)

All the emissions except fundamental emission from 9KHz to 25GHz were comply with 15.209 limit.

Note1: According exploratory test no any obvious emission were detected from 9KHz to 30MHz and 18GHz to 25GHz, so the final test was performed with frequency range from 30MHz to 18GHz and recorded in below.

Note2: For below test data, when the limit tabular marked “/” means this frequency point is the fundamental emission and no need comply with this limit.

Test Result

EUT	: DDT 3m Chamber : Aferglow Wireless Controller : for Wii	Tested By	: Vito
Power Supply	: DC 3V	Model Number	: PL-7602E
Condition	: Temp:24.5°C,Humi:55%, : Press:100.1kPa	Test Mode	: Keeping Tx
Memo	:	Antenna/Distance	: VULB 9163 /3m

Frequency (MHz)	Receiver		Rx Antenna		Cable loss (dB)	Amplifier Gain (dB)	Corrected Amplitude (dBμV/m)	FCC 15.247	
	Reading (dBμV)	PK/QP/AV	Polar (H/V)	Factor (dB)				Limit (dBμV/m)	Margin (dB)
Low Channel (2402)									
2400.0	62.34	PK	H	28.00	3.57	31.95	61.96	74.00	-12.04
2400.0	49.13	AV	H	28.00	3.57	31.95	48.75	54.00	-5.25
2400.0	63.14	PK	V	28.00	3.57	31.95	62.76	74.00	-11.24
2400.0	50.06	AV	V	28.00	3.57	31.95	49.68	54.00	-4.32
4804.0	60.23	PK	H	32.30	5.91	31.78	66.66	74.00	-7.34
4804.0	42.16	AV	H	32.30	5.91	31.78	48.59	54.00	-5.41
4804.0	61.49	PK	V	32.30	5.91	31.78	67.92	74.00	-6.08
4804.0	43.11	AV	V	32.30	5.91	31.78	49.54	54.00	-4.46
7206.0	56.84	PK	H	36.30	6.34	30.97	68.51	74.00	-5.49
7206.0	37.58	AV	H	36.30	6.34	30.97	49.25	54.00	-4.75
7206.0	57.09	PK	V	36.30	6.34	30.97	68.76	74.00	-5.24
7206.0	38.14	AV	V	36.30	6.34	30.97	49.81	54.00	-4.19
9608.0	53.26	PK	H	37.90	8.01	30.86	68.31	74.00	-5.69
9608.0	34.59	AV	H	37.90	8.01	30.86	49.64	54.00	-4.36
9608.0	54.18	PK	V	37.90	8.01	30.86	69.23	74.00	-4.77
9608.0	35.56	AV	V	37.90	8.01	30.86	50.61	54.00	-3.39
288.3	50.26	QP	H	14.20	2.74	27.60	39.60	46.00	-6.40
288.3	52.47	QP	V	14.20	2.74	27.60	41.81	46.00	-4.19
Middle Channel (2441)									
4882.0	60.23	PK	H	32.90	6.34	31.78	67.69	74.00	-6.31
4882.0	41.26	AV	H	32.90	6.34	31.78	48.72	54.00	-5.28
4882.0	61.45	PK	V	32.90	6.34	31.78	68.91	74.00	-5.09
4882.0	42.13	AV	V	32.90	6.34	31.78	49.59	54.00	-4.41
7323.0	45.34	PK	H	37.10	6.72	30.97	58.19	74.00	-15.81
7323.0	32.58	AV	H	37.10	6.72	30.97	45.43	54.00	-8.57
7323.0	47.01	PK	V	37.10	6.72	30.97	59.86	74.00	-14.14
7323.0	34.12	AV	V	37.10	6.72	30.97	46.97	54.00	-7.03

9764	44.59	PK	H	38.60	8.43	30.86	60.76	74.00	-13.24
9764	33.65	AV	H	38.60	8.43	30.86	49.82	54.00	-4.18
9764	46.48	PK	V	38.60	8.43	30.86	62.65	74.00	-11.35
9764	33.67	AV	V	38.60	8.43	30.86	49.84	54.00	-4.16
288.2	47.56	QP	H	14.20	2.74	27.60	36.90	46.00	-9.10
288.2	49.86	QP	V	14.20	2.74	27.60	39.20	46.00	-6.80
High Channel (2480)									
4960.0	55.38	PK	H	33.1	6.39	31.78	63.09	74	-10.91
4960.0	41.12	AV	H	33.1	6.39	31.78	48.83	54	-5.17
4960.0	60.57	PK	V	33.1	6.39	31.78	68.28	74	-5.72
4960.0	42.28	AV	V	33.1	6.39	31.78	49.99	54	-4.01
7440.0	52.21	PK	H	37.2	6.77	30.97	65.21	74	-8.79
7440.0	35.33	AV	H	37.2	6.77	30.97	48.33	54	-5.67
7440.0	54.59	PK	V	37.2	6.77	30.97	67.59	74	-6.41
7440.0	36.41	AV	V	37.2	6.77	30.97	49.41	54	-4.59
9920.0	50.75	PK	H	38.7	8.48	30.86	67.07	74	-6.93
9920.0	32.93	AV	H	38.7	8.48	30.86	49.25	54	-4.75
9920.0	52.15	PK	V	38.7	8.48	30.86	68.47	74	-5.53
9920.0	34.24	AV	V	38.7	8.48	30.86	50.56	54	-3.44
288.2	47.58	QP	H	14.2	2.74	27.6	36.92	46	-9.08
288.2	49.63	QP	V	14.2	2.74	27.6	38.97	46	-7.03

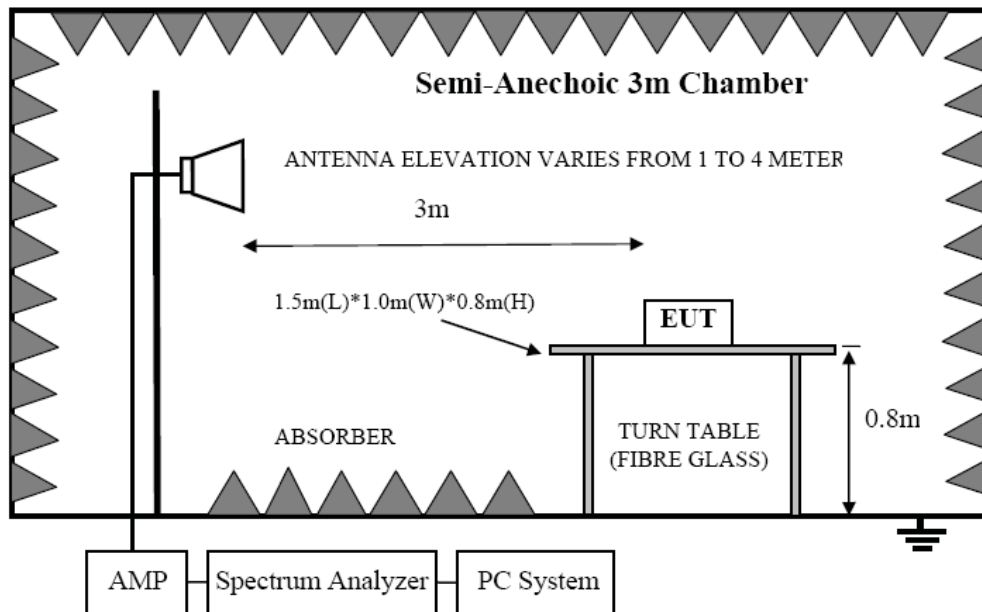
Note: 1. Result Level = Read Level + Antenna Factor + Cable loss - Amp Gain
 2. If Peak Result comply with QP limit, QP Result is deemed to comply with QP limit

10.BAND EDGE

10.1TEST EQUIPMENT

Item	Equipment	Manufacturer	Model No.	Serial No.	Cal Due.	Cal. Interval
1	EMI Test Receiver	R&S	ESU8	100316	2015/12/25	1 Year
2	Spectrum analyzer	R&S	FSU	1166.1660.26	2015/07/13	1 Year
3	Trilog Broadband Antenna	Schwarzbeck	VULB9163	9163-462	2015/12/26	1 Year
4	Double Ridged Horn Antenna	R&S	HF907	100276	2015/12/26	1 Year
5	Pre-amplifier	A.H.	PAM0-0118	360	2015/12/26	1 Year
6	RF Cable	R&S	R01	10403	2015/12/26	1 Year
7	RF Cable	R&S	R02	10512	2015/12/26	1 Year

10.2 BLOCK DIAGRAM OF TEST SETUP



10.3LIMIT

All restricted frequency bands shall not exceed the limits shown in 15.209, all the other emissions outside operation frequency band 2400MHz to 2483.5MHz shall be at least 20dB below the fundamental emissions, or comply with 15.209 limits.

10.4TEST PROCEDURE

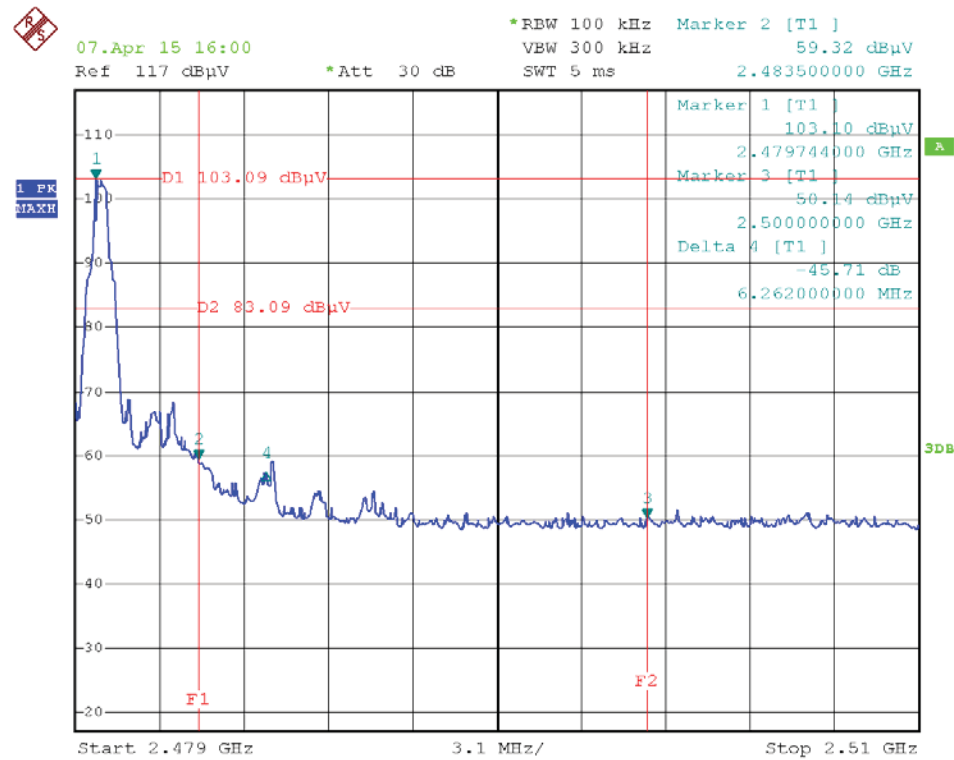
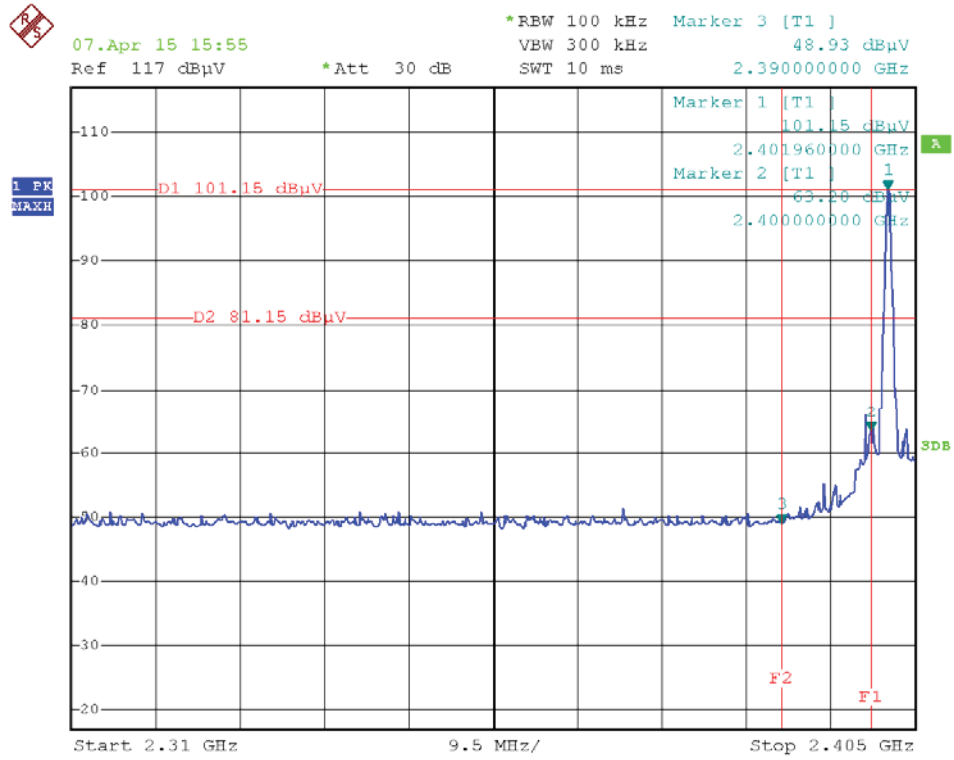
Same with clause 8.4

Remark: All restriction band have been tested, and only the worse case is shown in report.

10.5TEST RESULT

Frequency (MHz)	Receiver		Rx Antenna		Cable loss (dB)	Amplifier Gain (dB)	Corrected Amplitude (dBμV/m)	FCC 15.247	
	Reading (dBμV)	PK/QP/AV	Polar (H/V)	Factor (dB)				Limit (dBμV/m)	Margin (dB)
Lowest Channel									
2390.0	63.28	PK	H	27.80	3.57	31.95	62.70	74.00	-11.30
2390.0	49.56	AV	H	27.80	3.57	31.95	48.98	54.00	-5.02
2390.0	64.43	PK	V	27.80	3.57	31.95	63.85	74.00	-10.15
2390.0	50.02	AV	V	27.80	3.57	31.95	49.44	54.00	-4.56
Highest Channel									
2483.5	62.02	PK	H	28.70	3.72	31.93	62.51	74.00	-11.49
2483.5	46.15	AV	H	28.70	3.72	31.93	46.64	54.00	-7.36
2483.5	64.58	PK	V	28.70	3.72	31.93	65.07	74.00	-8.93
2483.5	47.09	AV	V	28.70	3.72	31.93	47.58	54.00	-6.42

- Note: 1. Result Level = Read Level + Antenna Factor + Cable Loss- Amplifier Gain
 2. After test and evaluation hopping off mode and hopping on mode, will record worst case (hopping off mode) in this report.



11.ANTENNA REQUIREMENTS

11.1 Limit

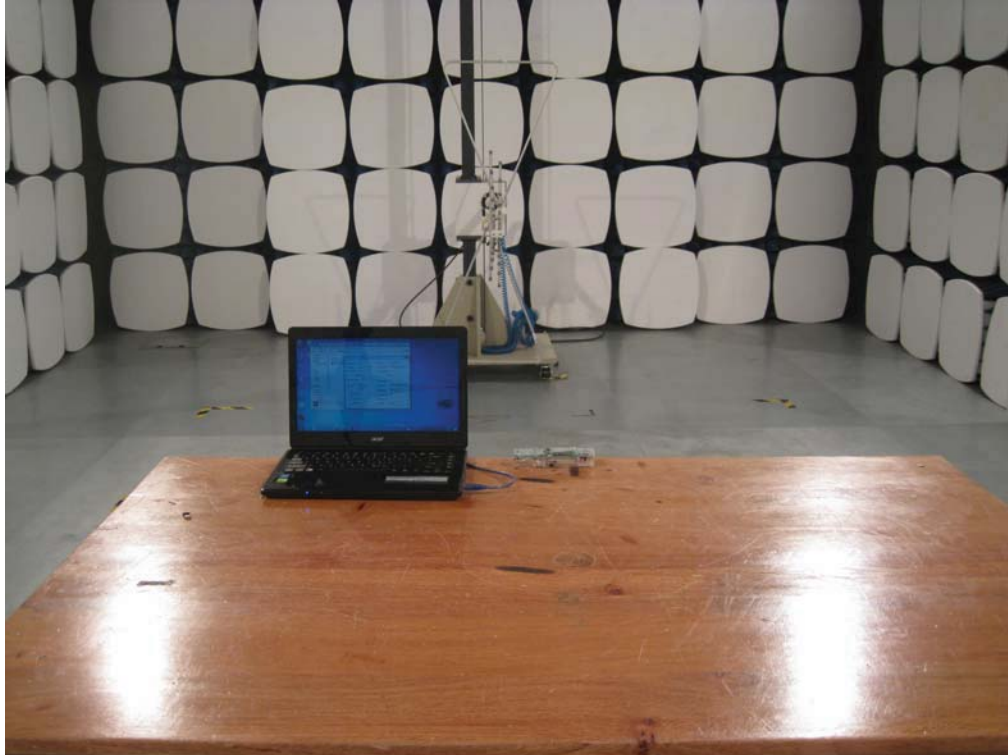
For intentional device, according to FCC 47 CFR Section 15.203, an intentional radiator shall be designed to ensure that no antenna other than that furnished by the responsible party shall be used with the device. And according to FCC 47 CFR Section 15.247 (b), if transmitting antennas of directional gain greater than 6dBi are used, the power shall be reduced by the amount in dB that the directional gain of the antenna exceeds 6dBi.

11.2 RESULT

The antennas used for this product are dipole antenna and other than that furnished by the responsible party shall be used with the device, the maximum peak gain of the transmit antenna is only 2.32dBi.

12 TEST SETUP PHOTOGRAPH

Radiated Measurement Photos(Below 1GHz)

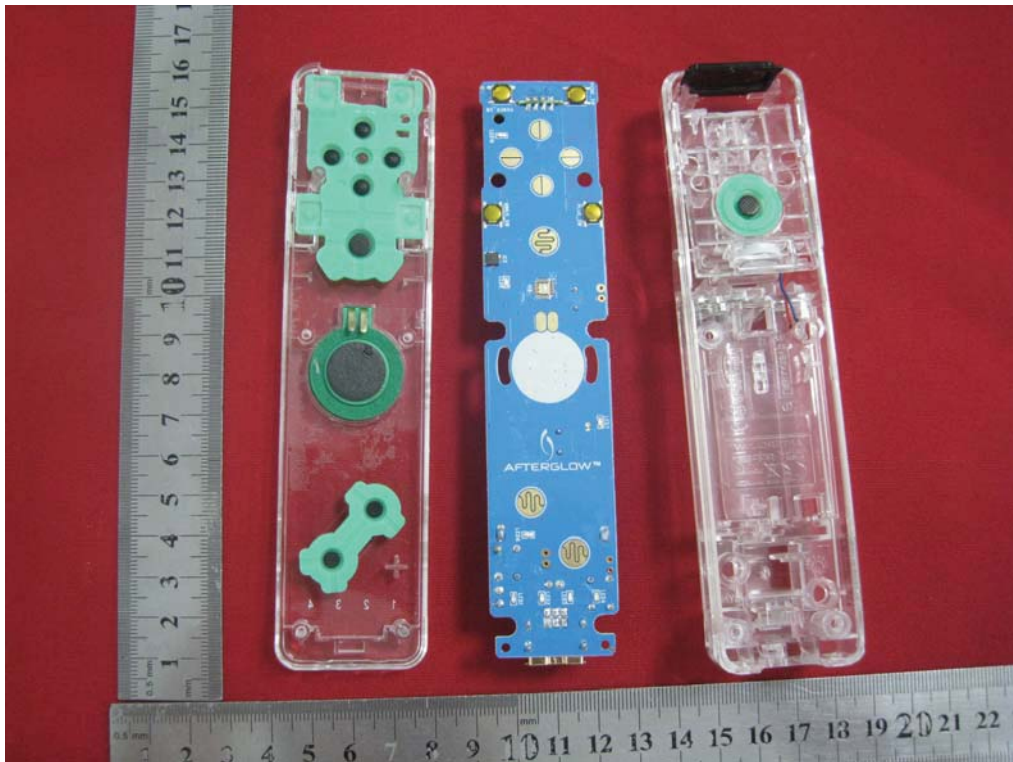
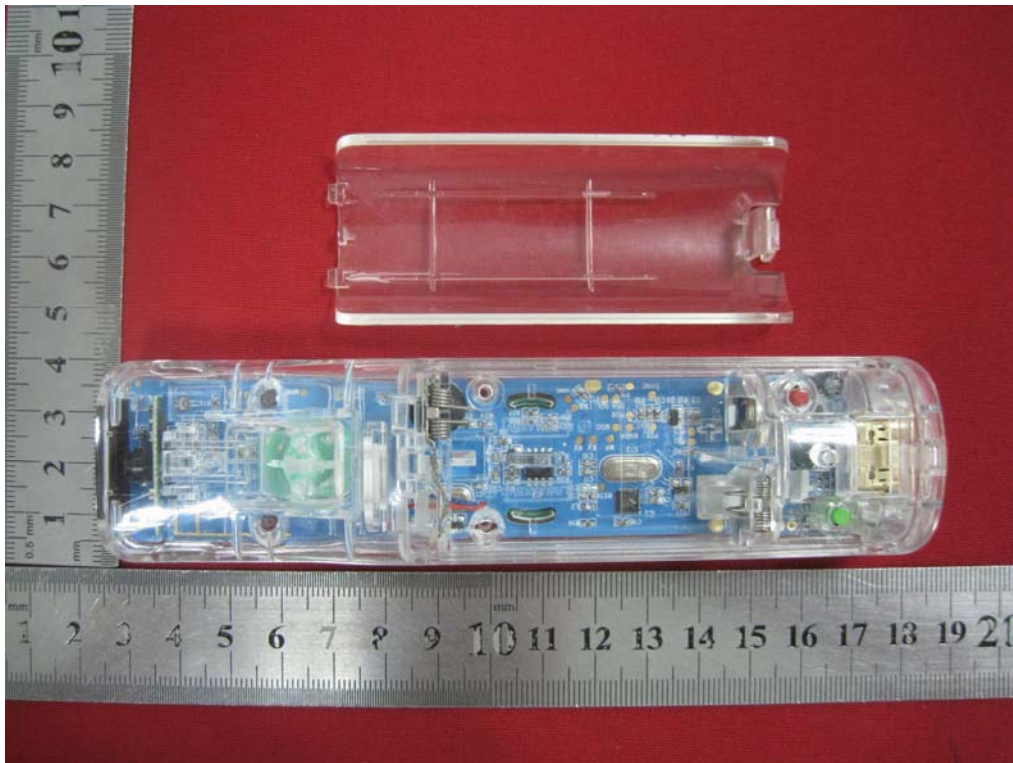


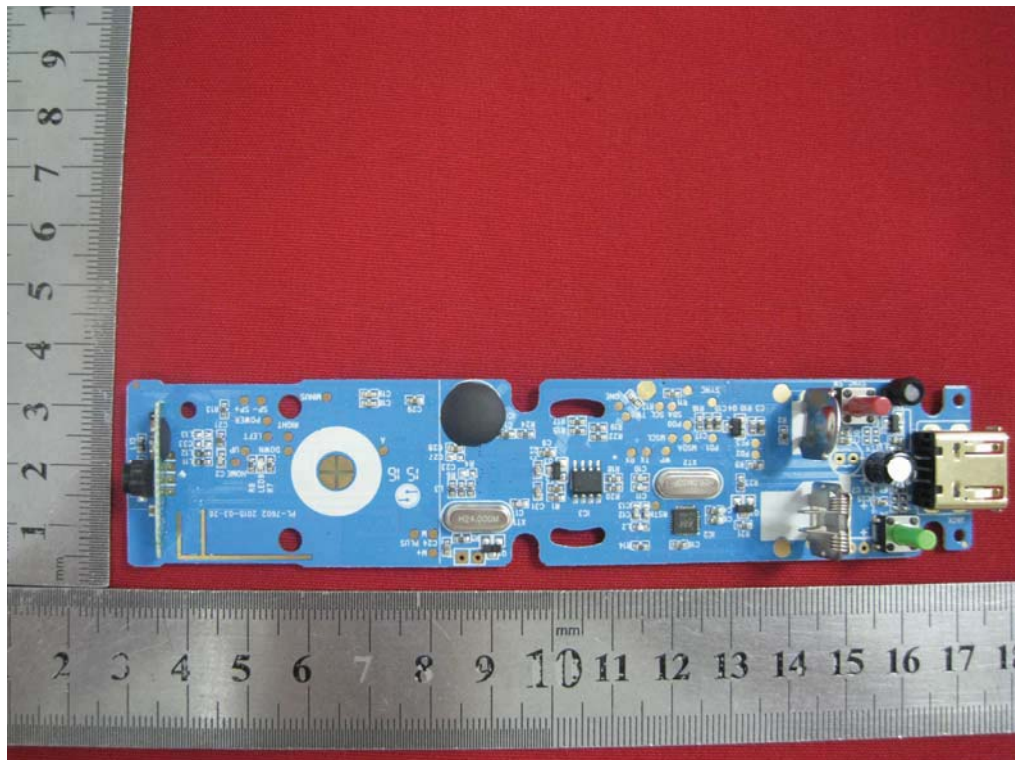
Radiated Measurement Photos (Above 1GHz)

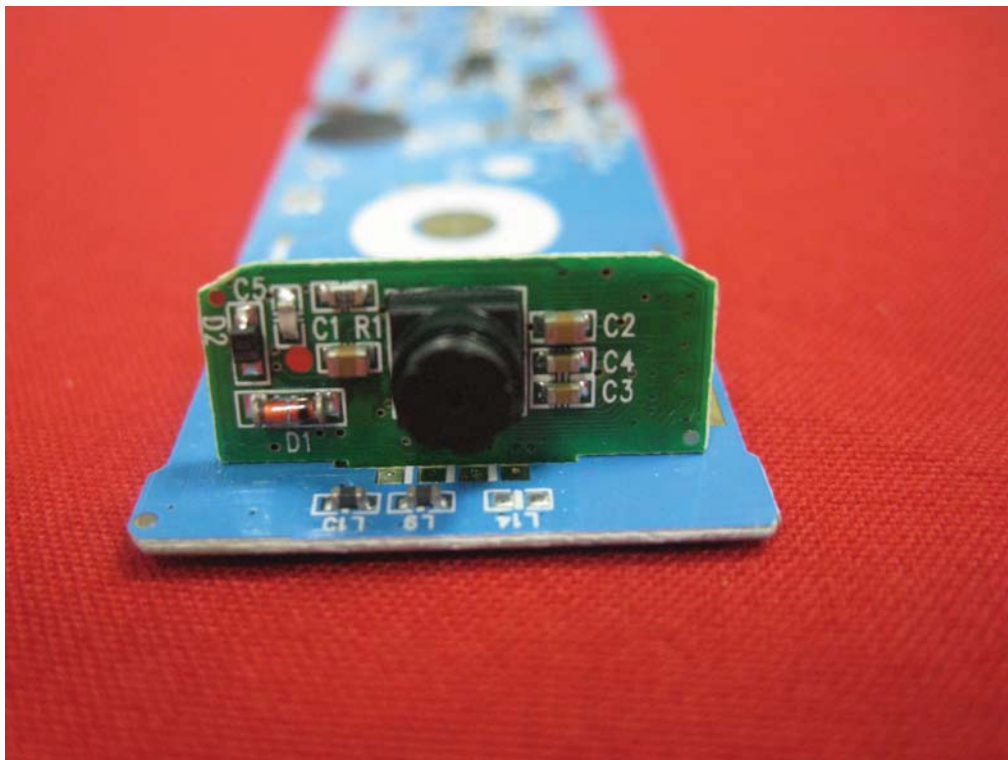


12 PHOTOS OF THE EUT









END OF REPORT