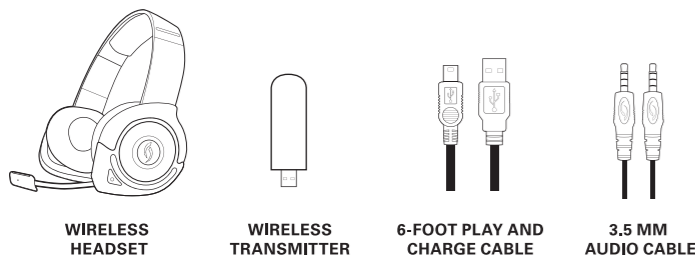


# AFTERGLOW® ENGLISH

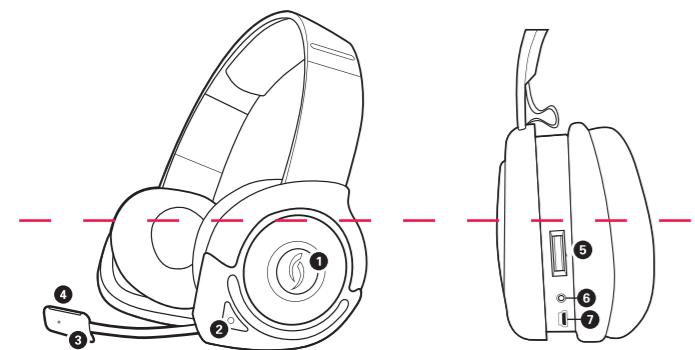


## WIRELESS HEADSET USER MANUAL

### WHAT'S IN THE BOX ENGLISH



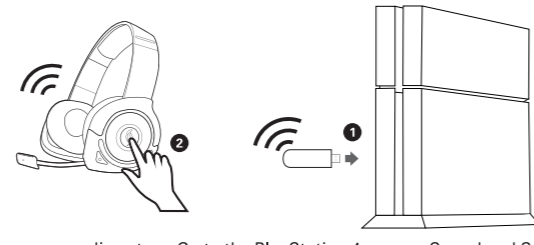
### HEADSET OVERVIEW ENGLISH



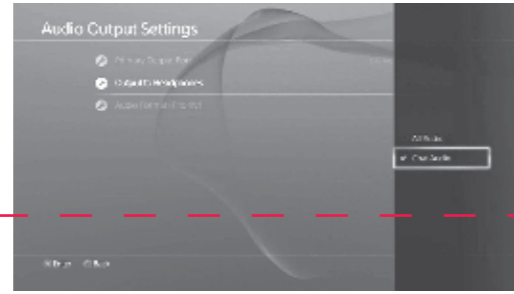
- ON/OFF BUTTON:** Press and hold to power on; repeat to power off. When ON, the button will function as a MUTE BUTTON. Click once to mute your microphone; click again to unmute.
- MODE BUTTON:** Click to alternate between the two audio modes, Bass boost and Pure audio; also changes lighting mode.
- RETRACTABLE NOISE CANCELLING MICROPHONE:**
- MODE INDICATION LED:** Multi-color LED indicates when you are paired, which audio mode you are in, and when you are muted.
- VOLUME DIAL:** Adjusts master volume level.
- 3.5MM UNIVERSAL LINE-IN PORT:** Plug the grey 3.5mm auxiliary cable into this port and the other end into a sound source (mobile device, tablet, PC). Microphone capabilities are supported.
- MICRO USB CHARGING PORT:** Plug one end of your micro USB charging cable into this port and the other end into an active USB port to charge.
- USB CONNECTOR:** Plug this into your gaming console or PC's active USB port.
- STATUS LED:** A blinking LED means the headset's power is OFF. A solid light indicates the headset and transmitter are successfully paired.
- PAIRING BUTTON:** Transmitter and your headset will come pre-paired, but if they are ever disconnected you can re-pair them by pressing this button.

### SET UP: PLAYSTATION® 4 ENGLISH

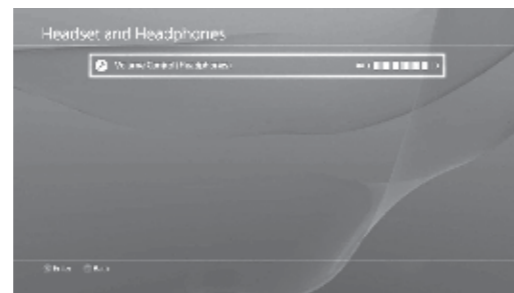
- Plug the Afterglow USB transmitter into an active USB port on the PS4 console. Your transmitter's LED light will flash, indicating that it is on and searching for your headset.
- Press and hold the large ON/OFF button on your headset to power on. The alternating LED colors on the mic tip will indicate the headset is searching for your USB transmitter. When the mic tip and transmitter LED turns a solid blue, your headset and transmitter are communicating.



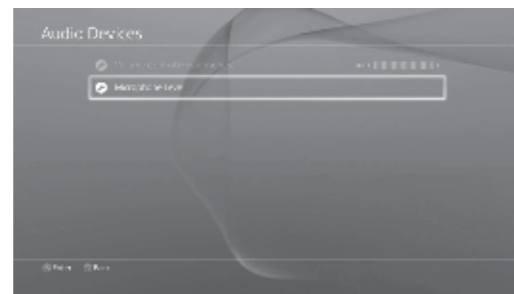
- For proper audio set up: Go to the PlayStation 4 menu > Sound and Screen Settings > Audio Output Settings > Output to Headphones > Select "All Audio" > Hit "X" to confirm.



- Make sure your volume is turned up. If you want to further increase the volume, you can do so in the PlayStation 4 menu: Go to the PlayStation 4 menu > Settings > Devices > Audio Devices > Volume Control



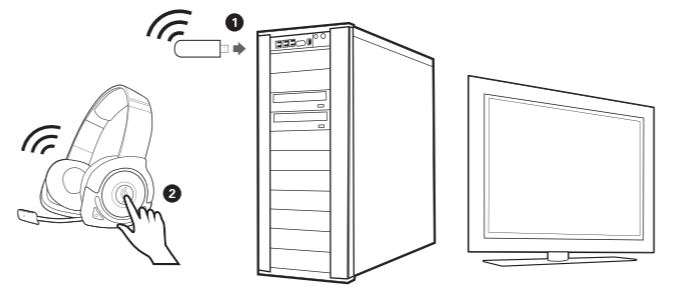
- For chat function, extend your microphone, position it close to your mouth. You can also adjust your microphone levels at: Go to PlayStation 4 menu > Settings > Devices > Audio Devices > Microphone Level



\*\*To mute your microphone, press the large MUTE button located in the center of your left ear cup.

### SET UP: PC ENGLISH

- Plug your Afterglow USB transmitter into a USB port on your PC. Your transmitter's LED light will flash, indicating that it is on and searching for a headset.
- Press and hold the large ON/OFF button on your headset to power on. The alternating LED colors on the mic tip will indicate the headset is searching for your USB transmitter. When the mic tip and transmitter LED turns a solid blue, your headset and transmitter are communicating.



- For proper audio set up: Right click the small speaker icon in the bottom tool bar > Select "Volume Options" > Select Afterglow Headset under "Sound Devices".

\*\*You can further adjust the volume on your headset through your PC through your audio settings indicated by a small speaker.

### SET UP: MOBILE DEVICES ENGLISH

- Take the grey 3.5mm cable and plug one end into the Afterglow Headset and the other into the audio output in your mobile device. Microphone capability will be enabled.
- Adjust the volume as desired on your mobile device.
- To keep the headset lights on while you're using the headset in wired mode: Turn the headset on while away from the transmitter, press and hold the mode button for 10 seconds until the mic LED alternating lights turn off.

\*Once in mobile mode you can change ear cup lights by holding the mode button.

### AUDIO MODES ENGLISH

Audio modes are indicated by the LED light at the tip of your Afterglow Headset's microphone.

**PURE AUDIO:** Pure audio offers a well-balanced and wide ranged audio experience that enables you to hear the game exactly as the game developers intended with no extra enhancements.

**BASS BOOST:** For those who prefer the extra kick on low end frequency, this mode adds the extra depth to your explosions and rumbles without sacrificing the undistorted, clean audio.

**BATTERY LIFE:** Your afterglow Headset is engineered to provide gamers up to 10 hours of battery life on a single charge. For uninterrupted gaming, you may charge your headset while it is in use.

**LOW BATTERY:**

- Your Afterglow Headset will alert you with an audio tone when the battery life is low.
- When your headset has about 10 minutes of power left, your headset's LED ear cup lights will shut off, but you will still be able to hear your game and chat audio.
- For a full battery charge, your headset will need 2.5 hours to charge. You may continue using your headset while charging by connecting the Play & Charge cable to your headset and an active USB port.

**LED CHARGING INDICATION:**

- When charging, the ear cup lights will pulsate, which indicates charging.
- When fully charged, the ear cup lights will stop pulsating, and stay a solid blue.

### TROUBLESHOOTING ENGLISH

#### I CANNOT HEAR GAME AUDIO - MAKE SURE...

- The USB transmitter is connected to the USB port on your PS4 system and the system is on.
- Your headset is turned on.
- Your headset and USB transmitter are paired successfully. This is indicated by a solid blue light on both the wireless transmitter and the headset's mic tip.
- Your volume is turned up.
- You have enabled "all audio" that is under Output in Headphone settings

#### I CANNOT HEAR OTHERS - MAKE SURE...

- Your volume dial is turned up.
- You have enabled "all audio" or "chat audio" in your PlayStation 4 sound settings.
- OTHERS CANNOT HEAR ME - MAKE SURE...**
- Your headset is ON and paired with your USB transmitter. This is indicated by a solid blue LED on the headset's microphone tip and the wireless transmitter's light.
- Your mic is not muted. Click the large MUTE button on the left ear cup to mute and unmute yourself. \*\*NOTE: when you mute your microphone your microphone LED blinks twice and will keep blinking once every minute.
- The retractable microphone is adjusted close to your mouth.
- On a PC, make sure your headset is selected as a microphone input by right clicking the speaker icon in your bottom tool bar > Recording Devices > select Headset microphone.

#### MY HEADSET AND TRANSMITTER ARE NOT PAIRED - MAKE SURE ...

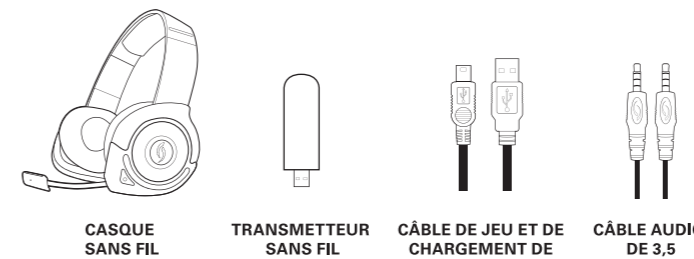
- Your headset is not in passive mode.
- While plugged into a live USB port, press and hold the "connect button" on the side of your USB transmitter until the LED light begins flashing rapidly.
- While in OFF position, press and hold the POWER button on your headset, do not release the button until microphone LED turns a solid blue.
- Your USB transmitter and microphone LED has a solid blue light. They are now paired.

# AFTERGLOW® FRANÇAIS

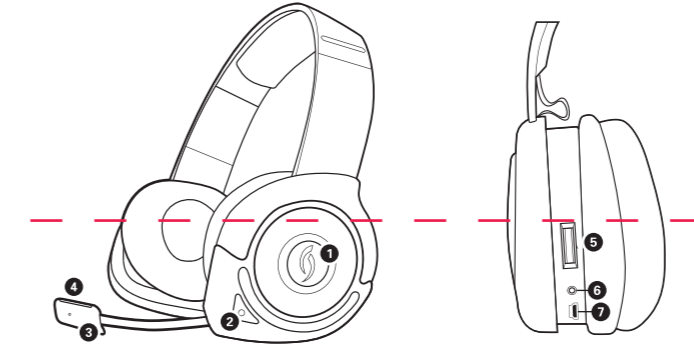


## CASQUE SANS FIL MANUEL DE L'UTILISATEUR

### CONTENU DE LA BOÎTE FRANÇAIS



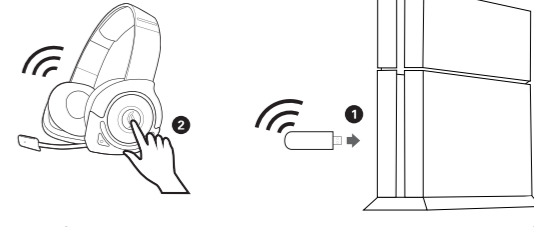
### PRÉSENTATION DU CASQUE-MICRO FRANÇAIS



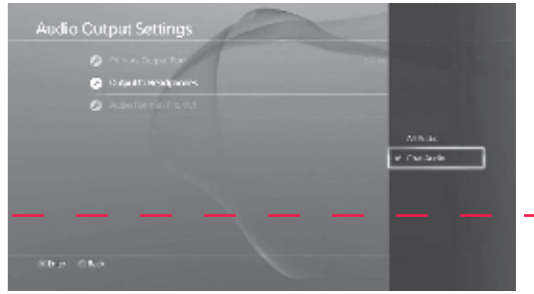
- BOUTON D'ALIMENTATION:** Maintenez le bouton appuyé pour mettre sous tension; appuyez à nouveau pour mettre hors tension. Lorsqu'il est en position ALLUMÉE, il fonctionne comme BOUTON DE SOURDINE. Cliquez une fois pour mettre le microphone en sourdine. Cliquez une nouvelle fois pour désactiver la sourdine.
- BOUTON MODE:** Cliquez pour passer d'un mode audio à l'autre. Amplification des basses et Audio pur; ce bouton change aussi le mode d'éclairage.
- MICRO RÉTRACTABLE AVEC SUPPRESSION DE BRUIT**
- DEL D'INDICATION DE MODE:** Une DEL multicolore indique si vous êtes couplé, le mode audio et la mise en sourdine.
- MOLETTE DE VOLUME:** Règle le niveau de volume principal.
- PORT ENTRÉE DE LIGNE UNIVERSEL DE 3,5 MM:** Branchez le câble auxiliaire gris de 3,5 mm sur ce port et l'autre extrémité sur la source sonore (périphérique mobile, tablette, PC). Les fonctionnalités du micro sont prises en charge.
- PORT DE CHARGEMENT MICRO USB:** Afin d'alimenter, branchez une extrémité de votre câble de chargement micro USB sur ce port et l'autre extrémité sur un port USB actif.
- CONNECTEUR USB:** Branchez ce connecteur sur votre console de jeu ou sur le port USB actif de votre PC.
- DEL D'ÉTAT:** Une DEL clignotante indique la mise hors tension du casque-micro. Une DEL allumée indique que le casque-micro et l'émetteur communiquent correctement.
- BOUTON DE COUPLAGE:** L'émetteur et votre casque-micro sont déjà couplés lorsqu'ils vous sont livrés, mais s'ils deviennent déconnectés, vous pouvez les coupler en appuyant sur ce bouton.

### INSTALLATION: PLAYSTATION® 4 FRANÇAIS

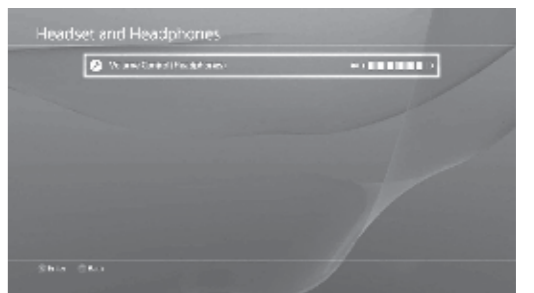
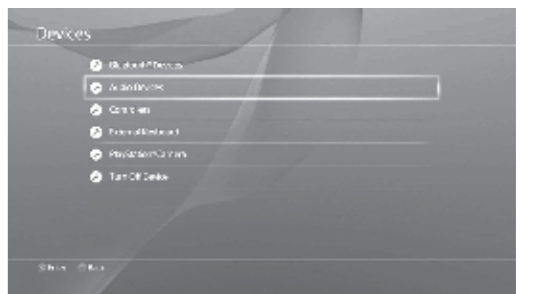
- Branchez l'émetteur USB Afterglow sur un port USB actif de la console PS4. La DEL de votre émetteur clignotera pour indiquer qu'il est sous tension et à la recherche de votre casque-micro.
- Pour mettre sous tension, maintenez appuyé le gros bouton ON/OFF de votre casque-micro. Si les couleurs de la DEL alternent sur l'extrémité du micro, ceci signifie que le casque-micro est à la recherche de votre émetteur USB. Lorsque la DEL de l'extrémité du micro et de l'émetteur restent allumées en bleu, ceci signifie que votre casque-micro et l'émetteur sont en communication.



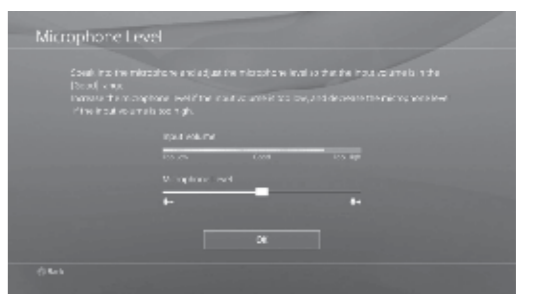
- Pour une configuration audio appropriée: Rendez-vous sur le menu PlayStation 4 > Paramètres Son et écran > Paramètres de sortie audio > Sortie vers le casque > Sélectionnez Intégralité de l'audio > Cliquez sur « X » pour confirmer.



- Assurez-vous que le volume est suffisamment élevé. Si vous désirez augmenter le volume, vous pouvez le faire à partir du menu de la PlayStation 4: Allez sur le menu de la PlayStation 4 > Paramètres > Périphériques > Périphériques audio > Niveau du microphone



- Pour la fonction de chat, allongez votre micro, puis placez-le près de votre bouche. Vous pouvez également régler le niveau du micro comme suit: Allez sur le menu de la PlayStation 4 > Paramètres > Périphériques > Périphériques audio > Niveau du microphone



\*\*Appuyez sur le gros bouton de SOURDINE au centre de la coque gauche pour mettre votre micro en sourdine.

