

Input Power : DC 3V

Frequency Band: 2402MHz ~ 2480MHz

Modulation Type: GFSK

Antenna Type: PCB Antenna

Antenna gain: 2.3 dBi .

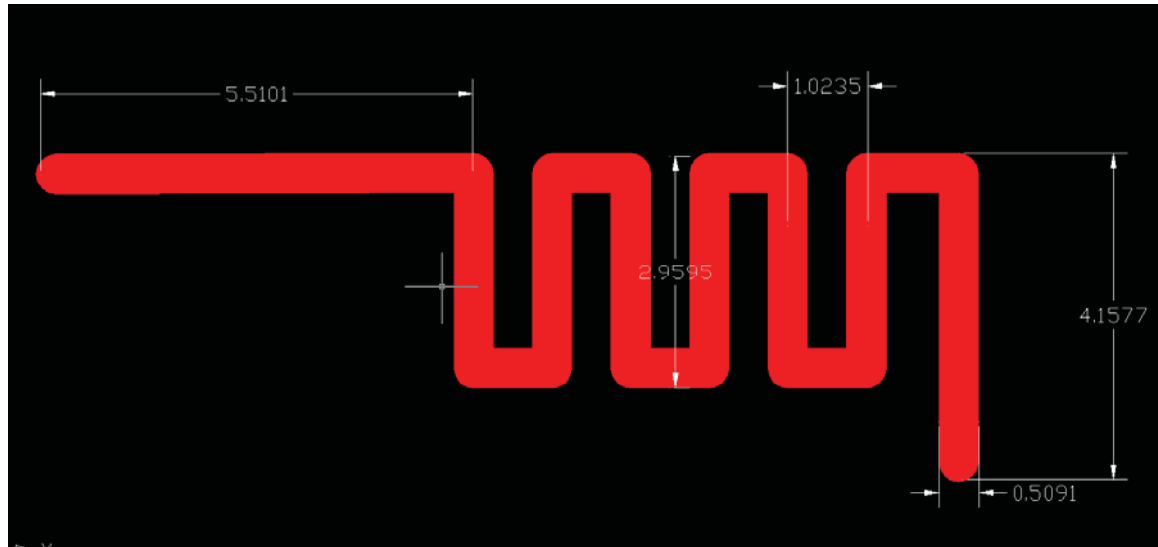
Number of Channel: 16

Channel	1	2	3	4	5	6	7	8
F (MHz)	2402	2426	2441	2463	2407	2422	2445	2466
Channel	9	10	11	12	13	14	15	16
F (MHz)	2414	2436	2459	2473	2419	2439	2453	2480

1. Antenna Description:

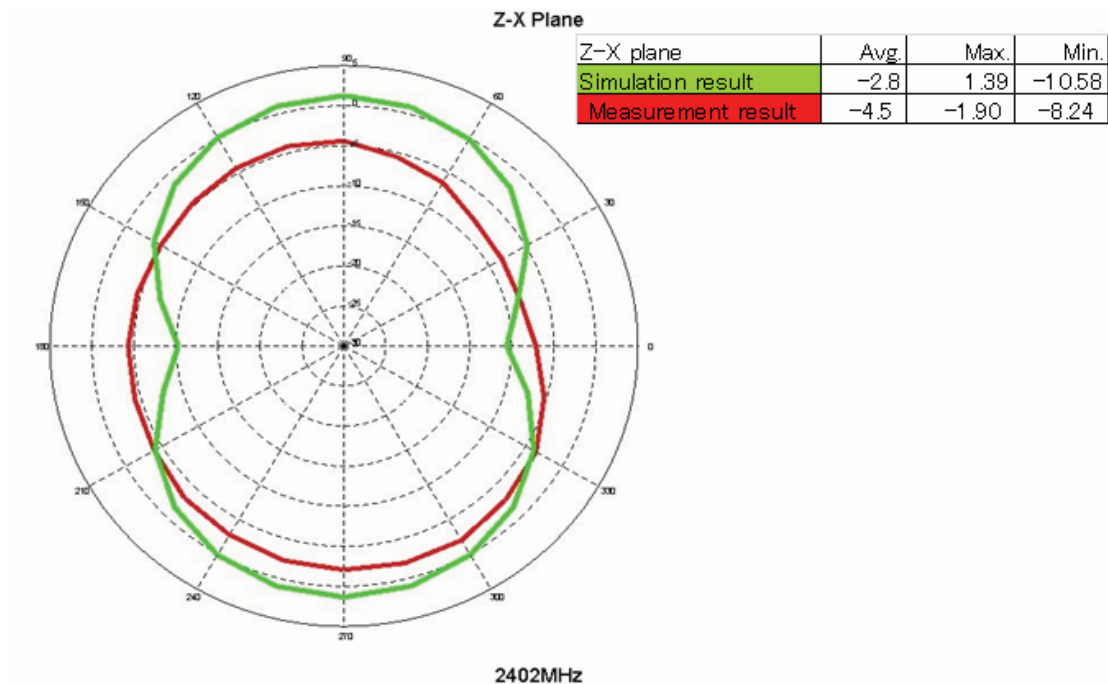
Antenna plate	Monopole Antenna
Antenna peak gain	2.3 dBi
Frequency range	2.402MHz~2.480MHz
Connect type	Direct Connect

2. Picture of antenna (单位: mm)

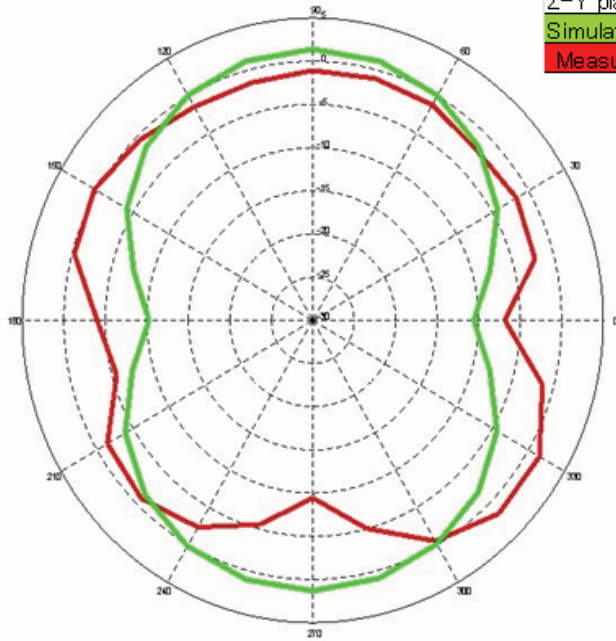


3. Antenna Radiation Pattern

Radiation pattern @2.402GHz



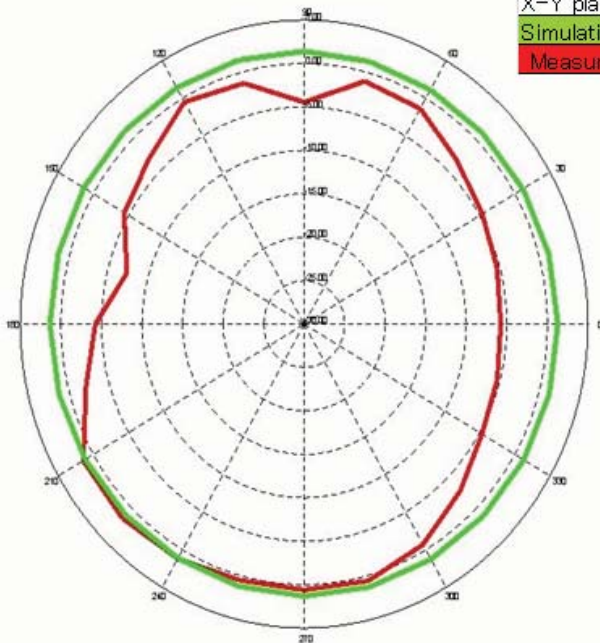
Z-Y Plane



Z-Y plane	Avg.	Max.	Min.
Simulation result	-2.8	1.45	-10.58
Measurement result	-2.1	1.7	-9.42

2402MHz

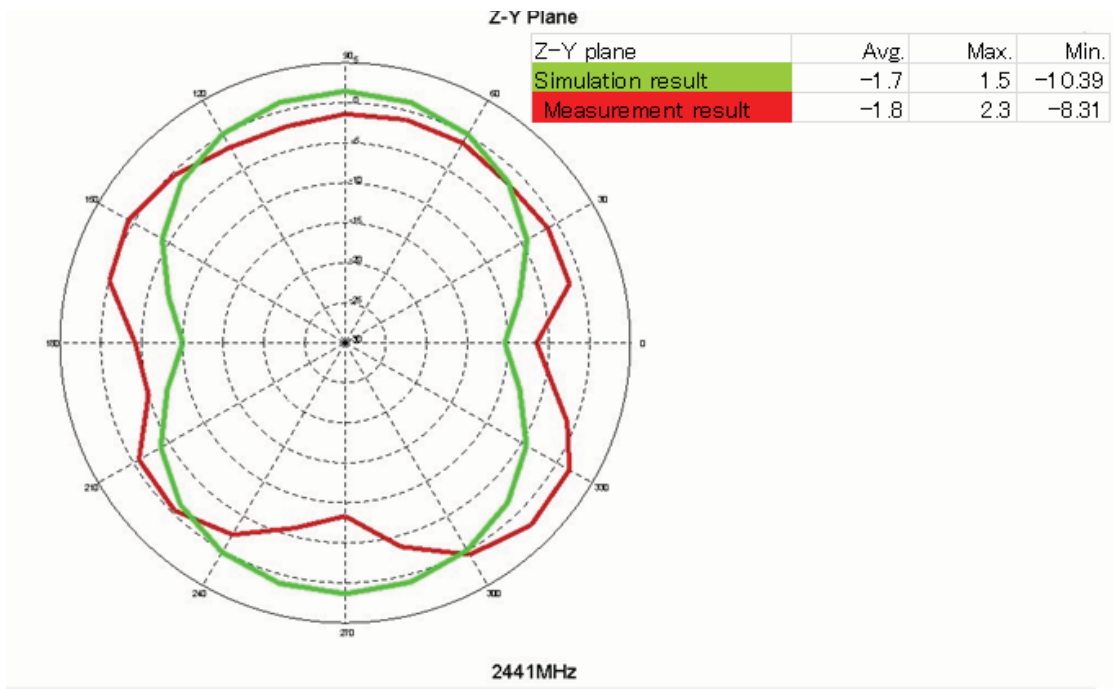
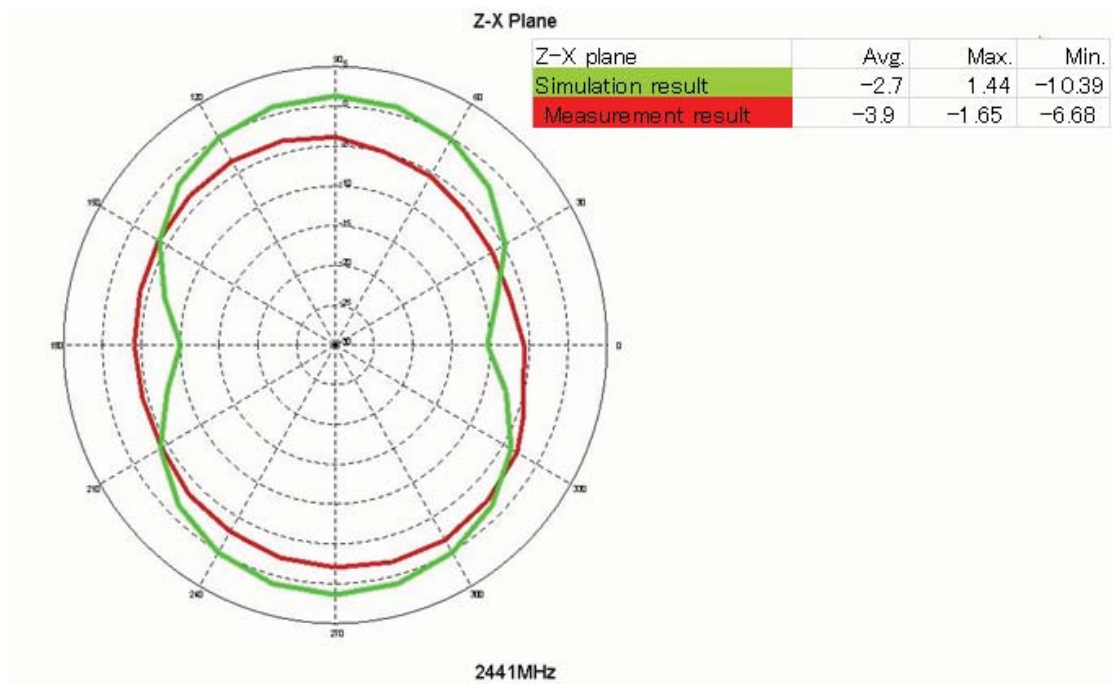
X-Y Plane

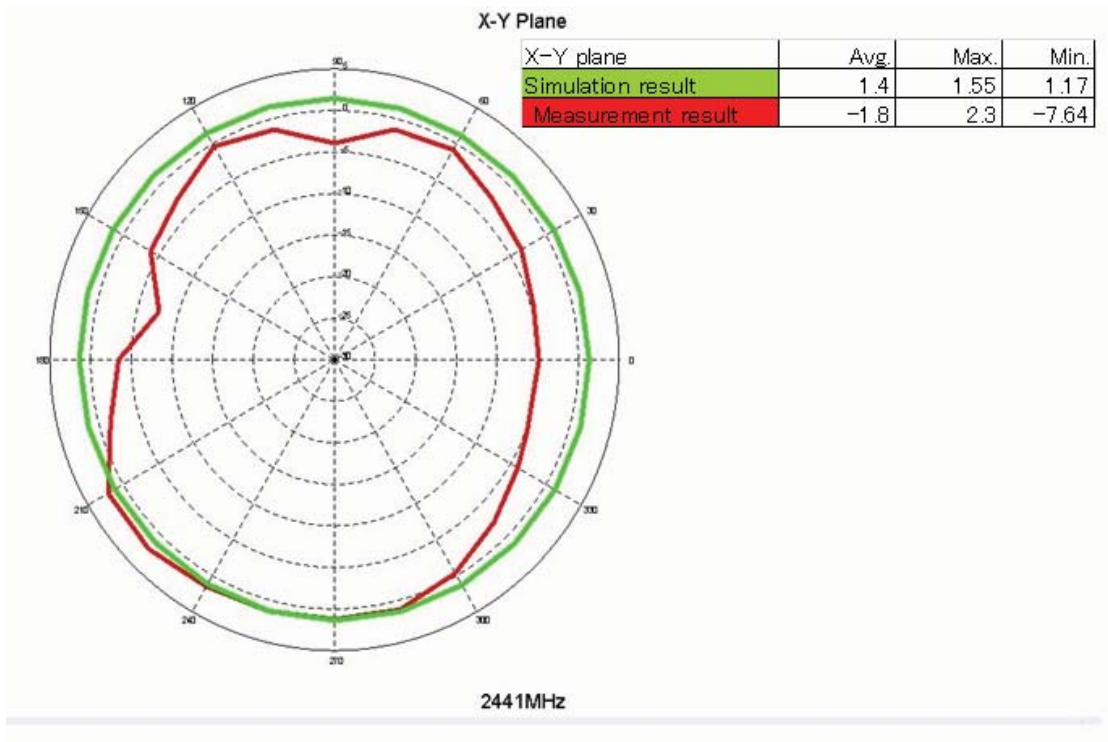


X-Y plane	Avg.	Max.	Min.
Simulation result	1.3	1.5	1.15
Measurement result	-2.3	1.7	-7.34

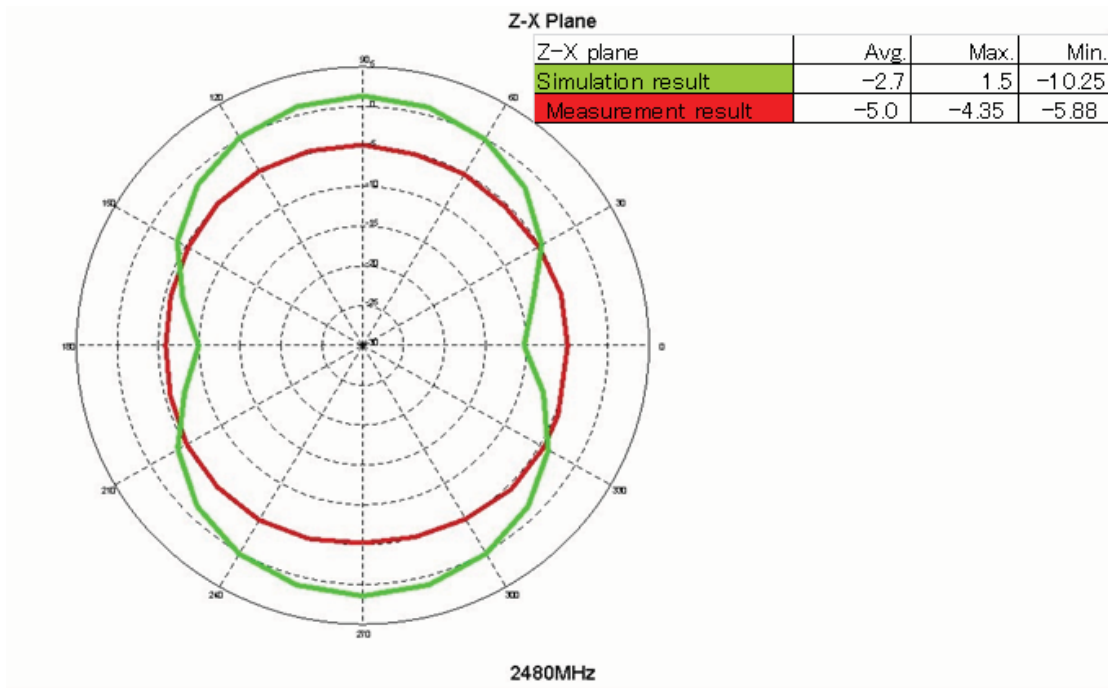
2402MHz

Radiation pattern @2.441GHz



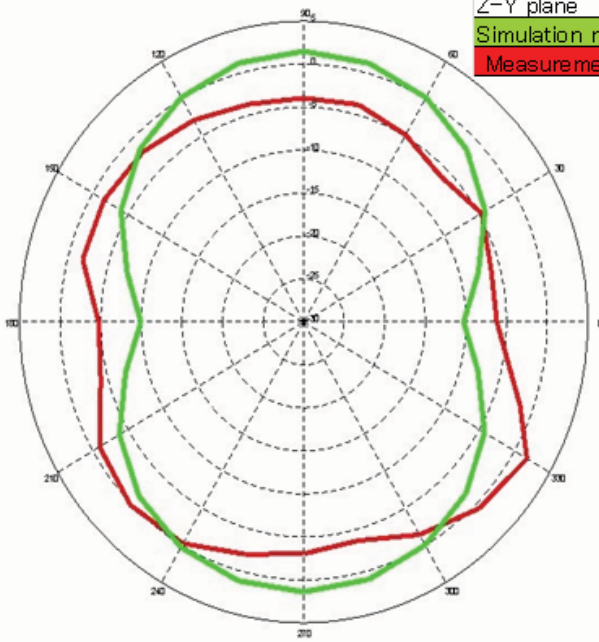


Radiation pattern @2.480GHz



Z-Y Plane

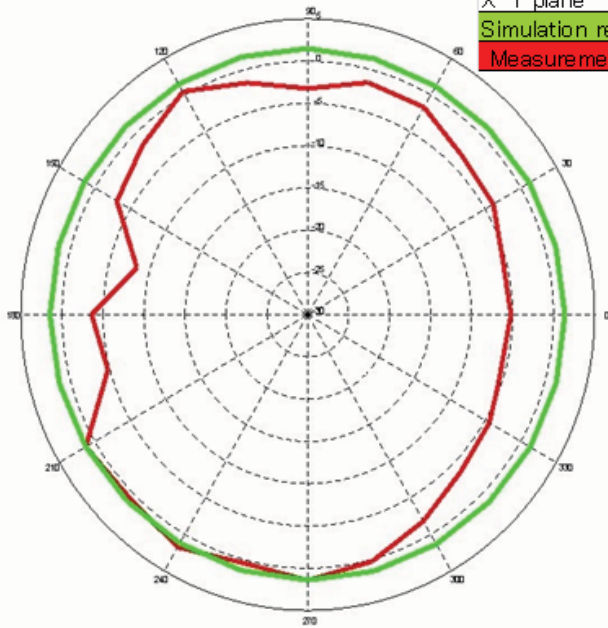
Z-Y plane	Avg.	Max.	Min.
Simulation result	-2.7	1.55	-10.25
Measurement result	-2.8	1.82	-6.16



2480MHz

X-Y Plane

X-Y plane	Avg.	Max.	Min.
Simulation result	1.4	1.61	1.22
Measurement result	-2.3	1.82	-8.38



2480MHz