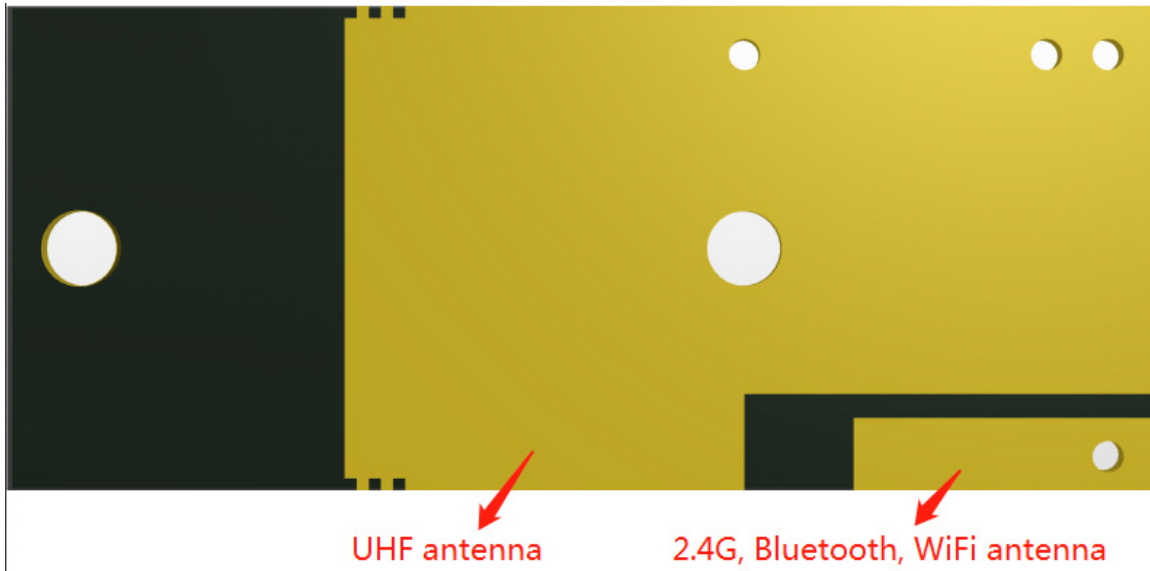


# FP3-BTB Antenna Specification

## 1. TECHNICAL SPECIFICATION

Electrical Specifications		
Antenna Type	PCB	PCB
Frequency Range(Mhz)	863-870, 902-928	2400~2500
Input Impedance( $\Omega$ )	50	50
V.S.W.R	$\leq 3$	$\leq 3$
Gain(dBi)	2	2
Radiator	copper	copper
Antenna Length(mm)	33.5*20	12.5*3

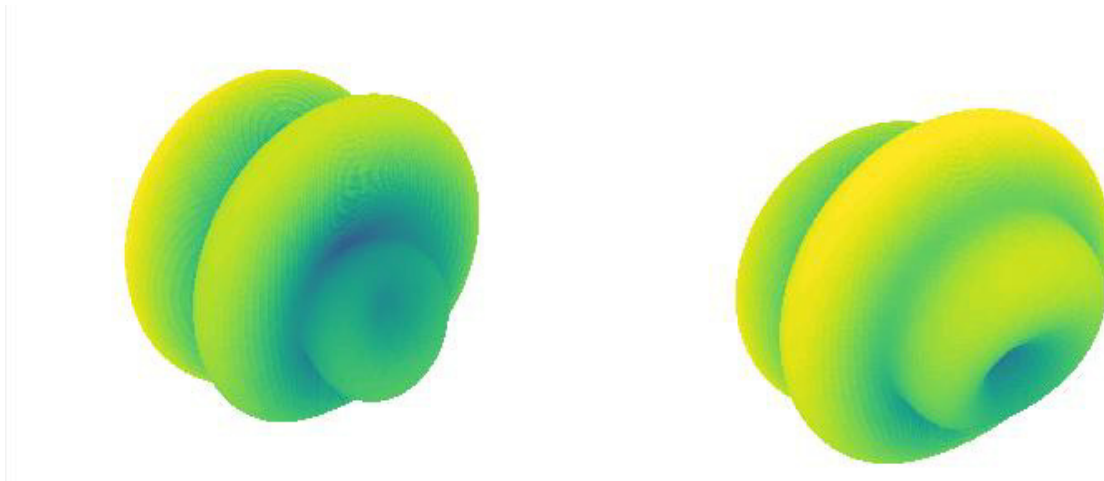
## 2. ANTENNA PICTURE



### 3. SPECIFICATION CHART

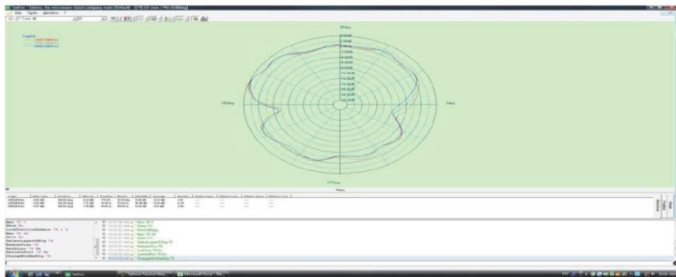
---

UHF antenna, Max Gain: 2.00dBi

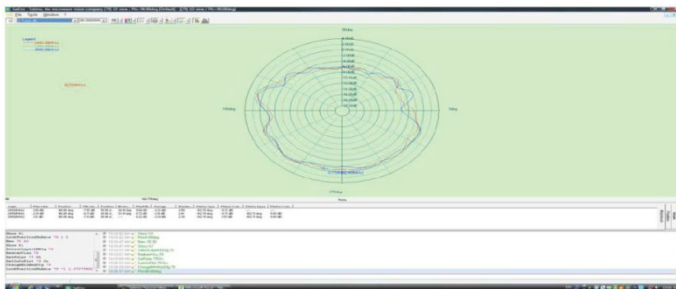


2.4G, Bluetooth, WiFi antenna, Max Gain: 2.00dBi

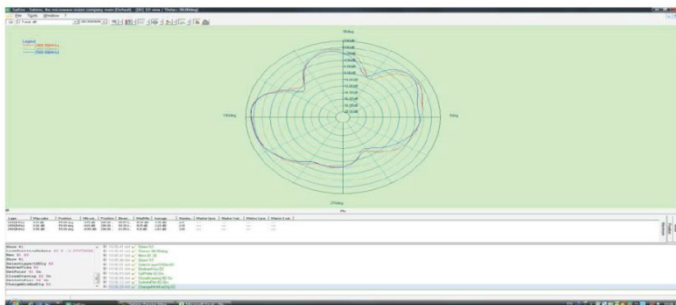
X-Z Plane



Y-Z Plane



X-Y Plane



## **4. MANUFACTURER AND MODEL**

---

Manufacture: Astera Manufacturing Limited

Address: Bldg. 3, CLT Science & Technology Park, No. 7, GanLiliu Road,  
Jihuasubdistrict, Longgang District, Shenzhen, P.C.518112.

Product Model: CT1-212