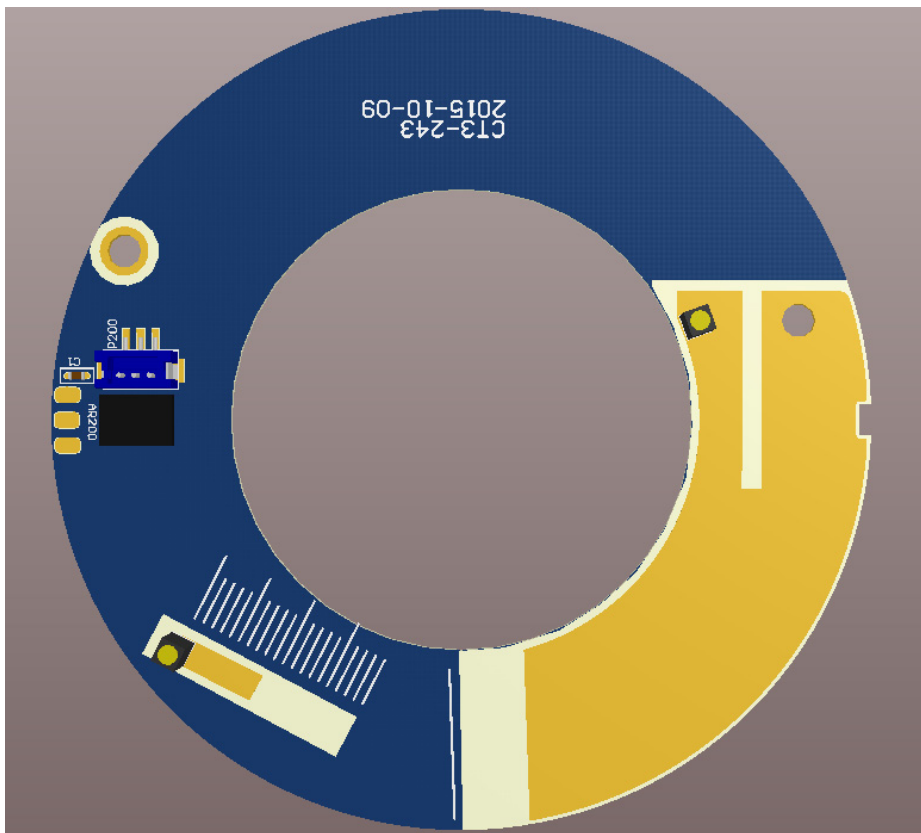


# AX3-BTB Antenna Specification

## 1. TECHNICAL SPECIFICATION

Electrical Specifications		
Antenna Type	PCB	PCB
Frequency Range(Mhz)	EU(865-870), US( 902~928)	CRMX2402~2480
Input Impedance( $\Omega$ )	50	50
V.S.W.R	$\leq 3$	$\leq 3$
Antenna Length(mm)	100 degree arc belt with radius 24 mm and radius 41 mm	10×2.8
Gain(dBi)	EU(-1.65), US( -0.22)	NA
Pcb size(mm)	$\Phi 82.7$ mm with $\Phi 46.5$ mm hole×1.6mm	
Radiator	copper	

## 2. ANTENNA PICTURE

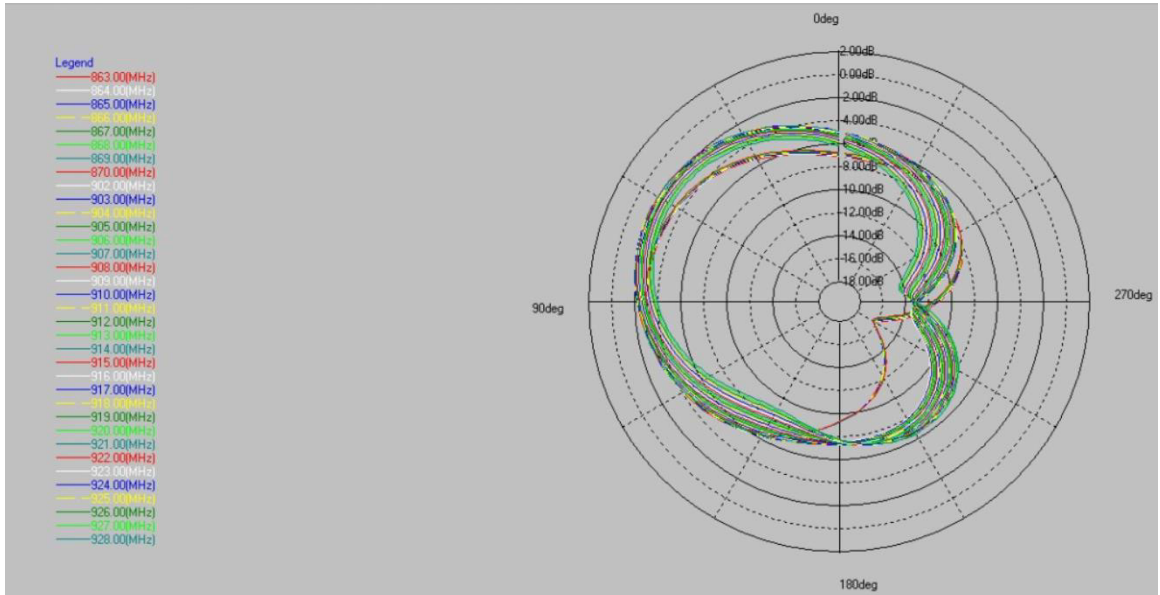




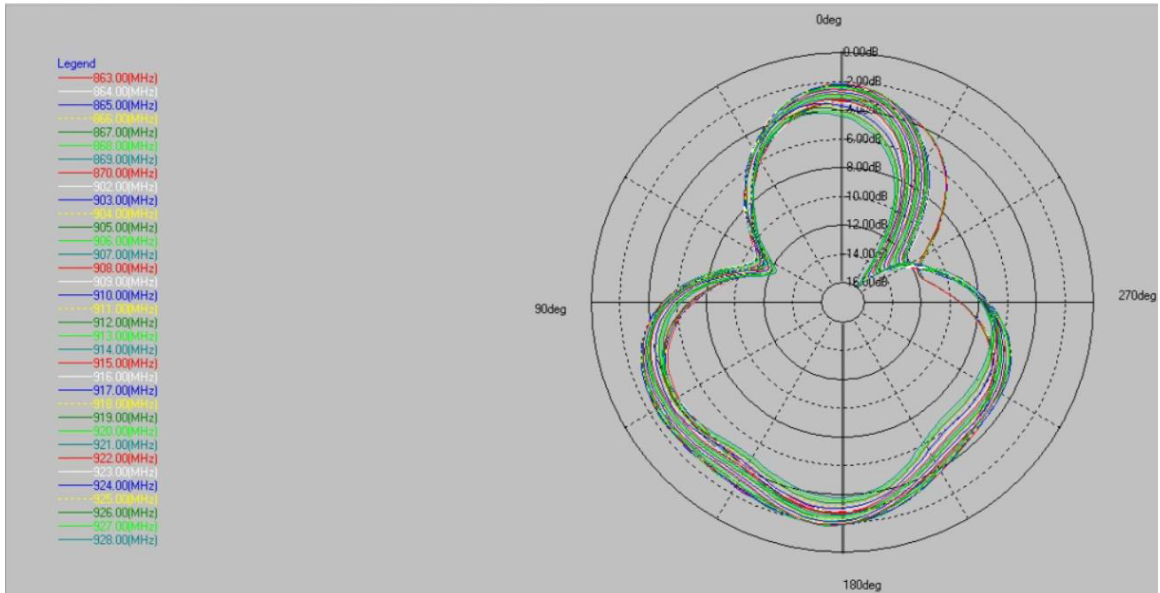
### 3. RADIATION DIAGRAM

Antenna Pattern:

Theta=90

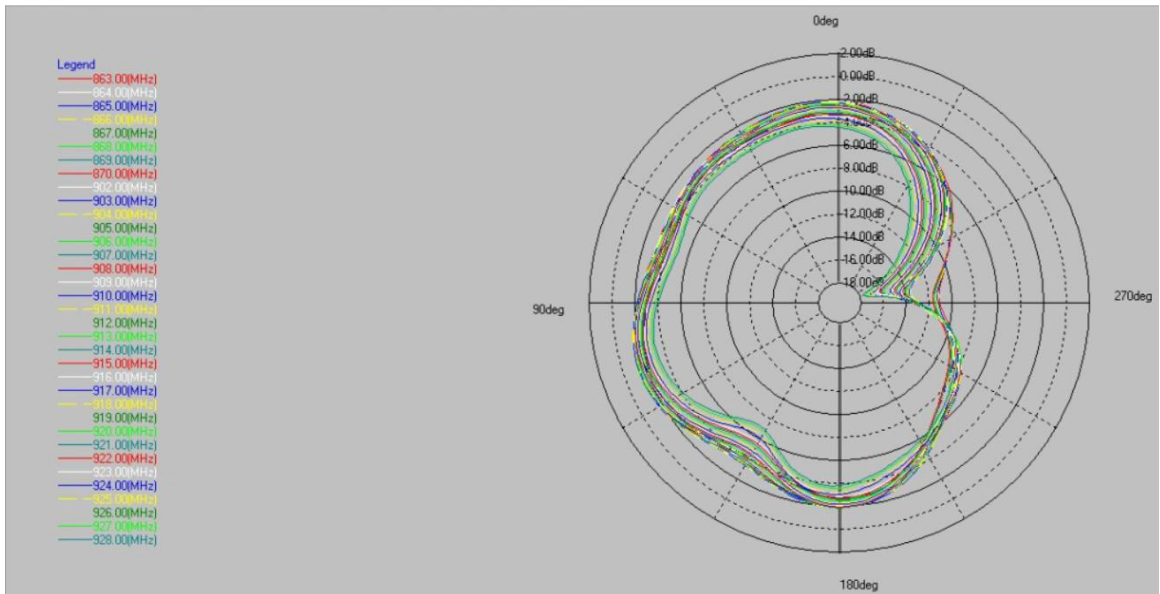


Phi =0





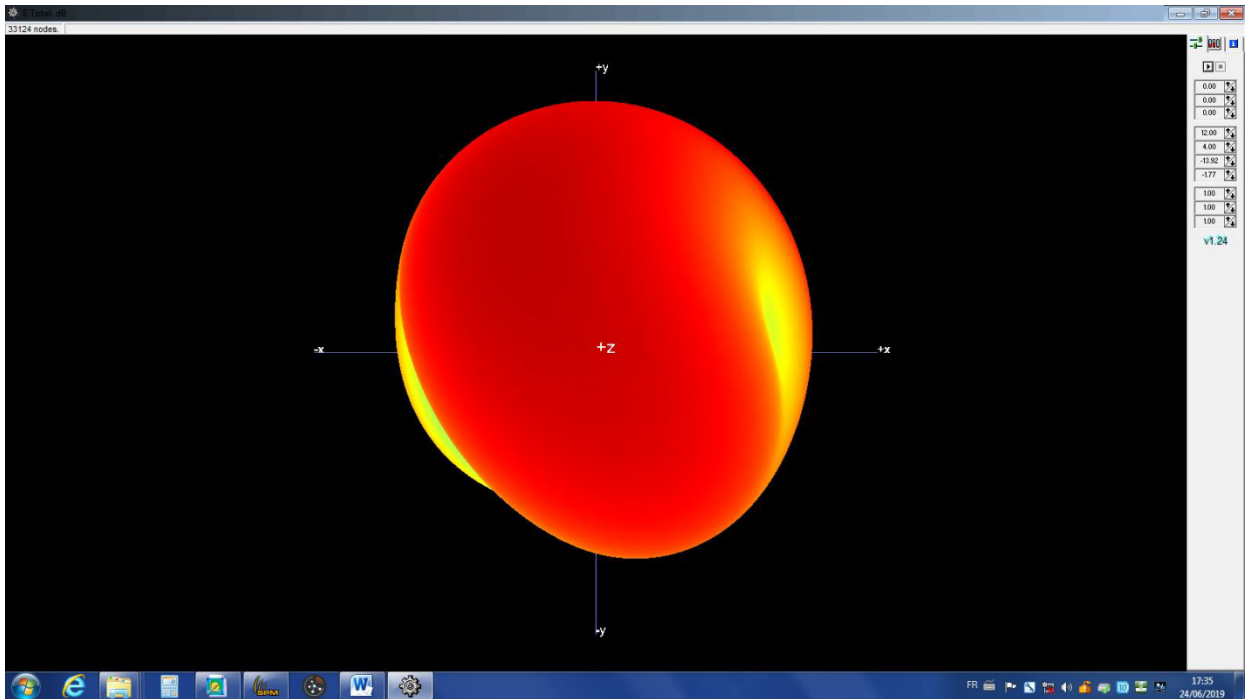
Phi=90



Antenna 3D Pattern:

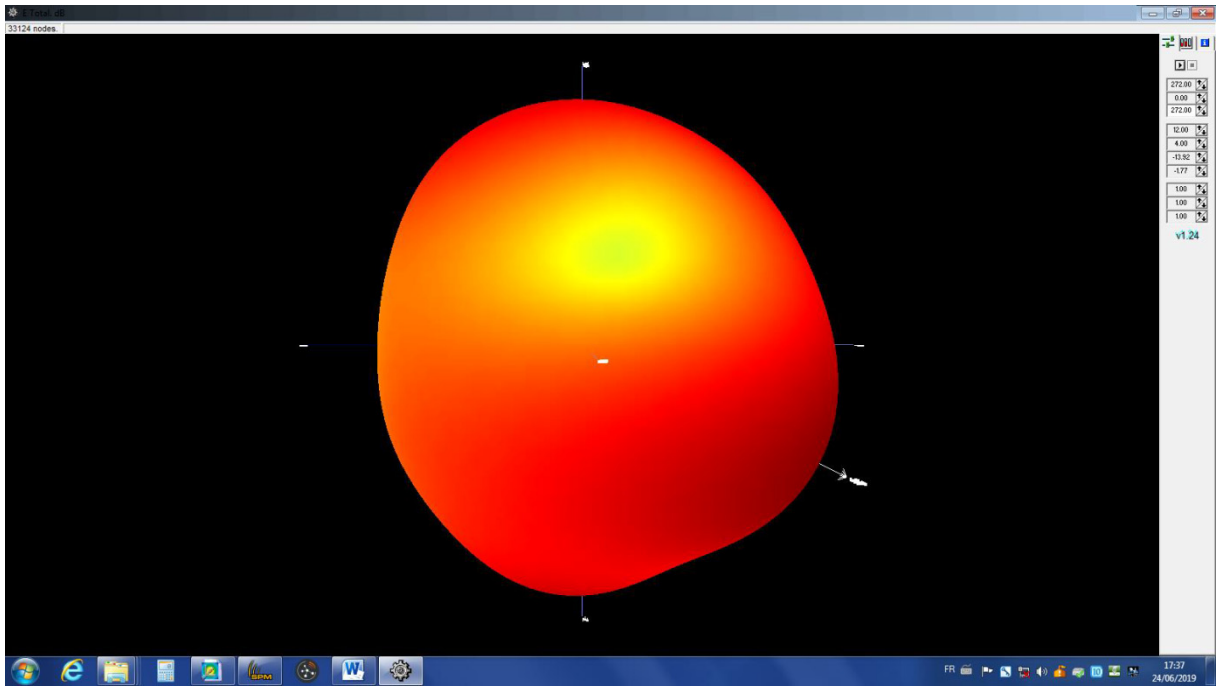
867MHz

+Z

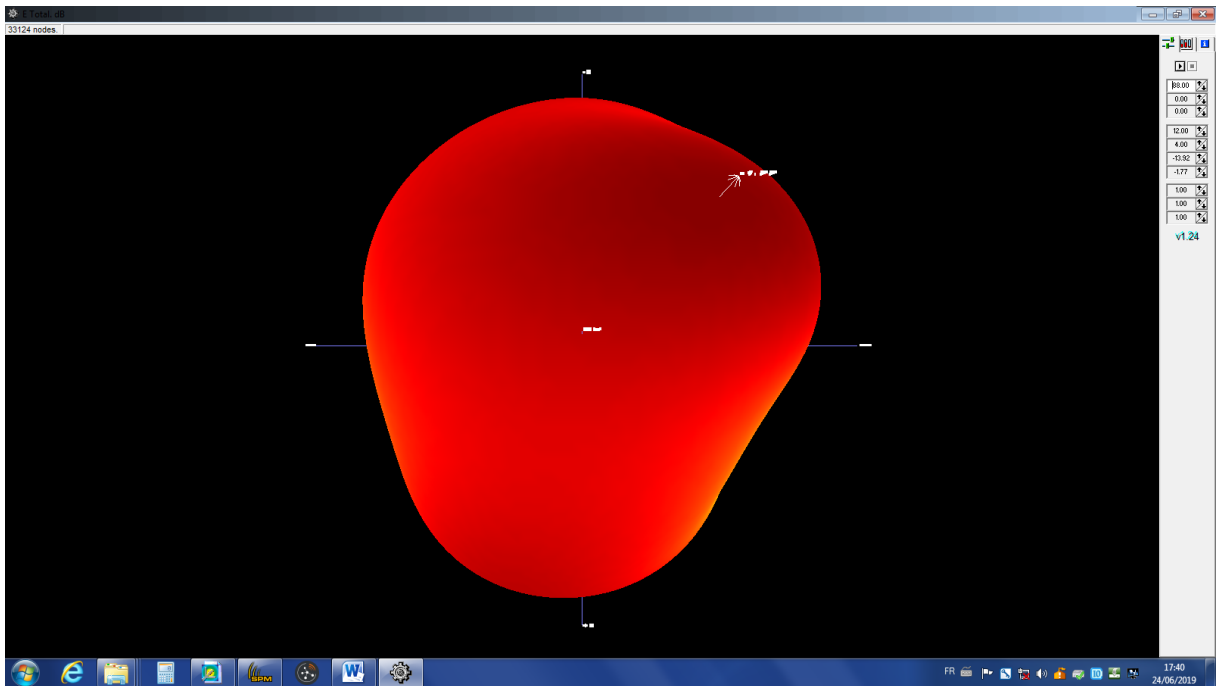




+x



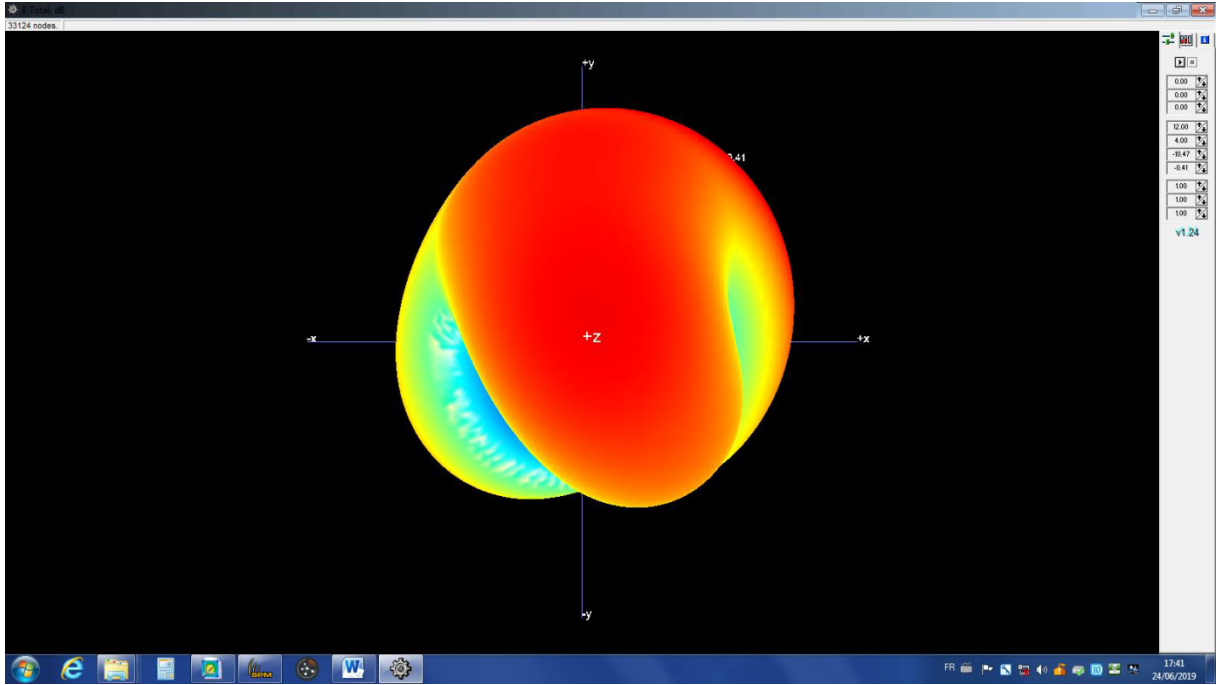
+y



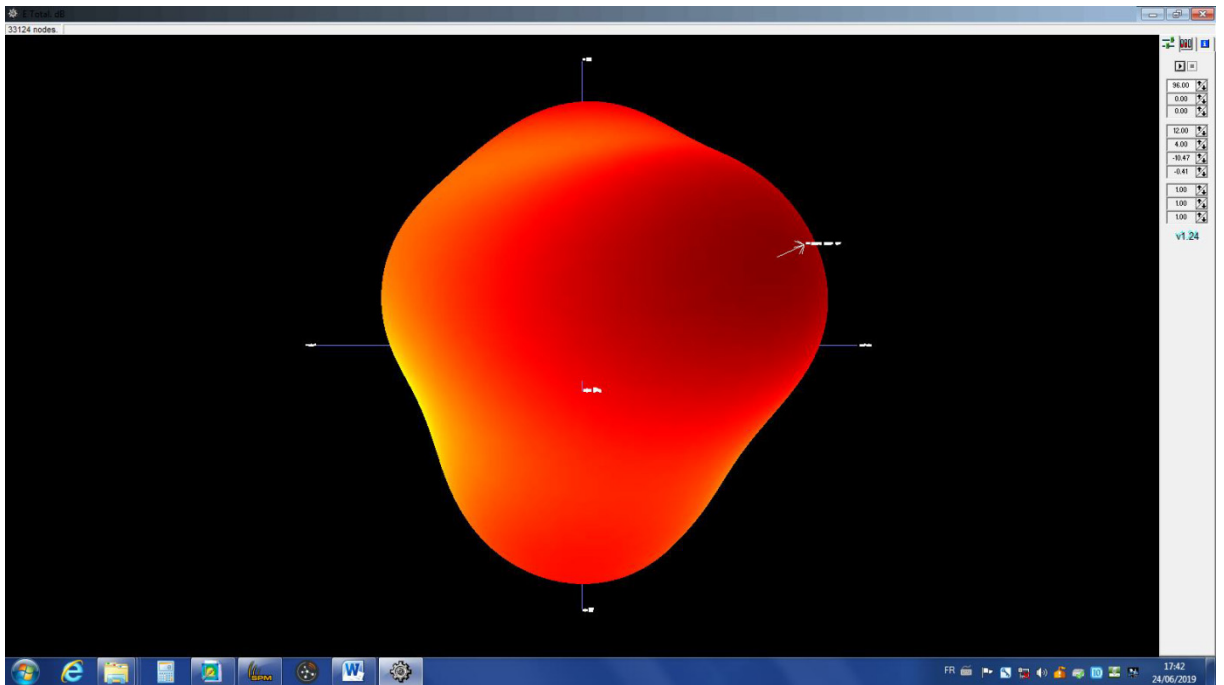


913 MHz

+z



+y





+x

