

深圳市亿圣邦科技有限公司 样品承认书

SPECIFICATION FOR APPROVAL

公司名称 (客户填写): 深圳市中科迅驰科技有限公司
物料代码 (客户填写): _____
规格型号 (客户填写): _____
承认日期 (客户填写): _____
供应商名称 (SLK 填写): 深圳市亿圣邦科技有限公司
供应商型号 (SLK 填写): WIFI:SLK-ZKXC-2525B-L-80I-B

承 认 签 章

供 应 商 承 认			深圳市中科迅驰科技有限公司		
工 程 师	审 核	批 准	工 程 师	审 核	批 准
范新竹	黄震	林美财			
盖章签署		盖章签署			
日 期	2023-07-20		日 期		
批示: <input type="checkbox"/> 接受 <input type="checkbox"/> 有条件接受					
备注 (客户填写):					

供应商名称: 深圳市亿圣邦科技有限公司

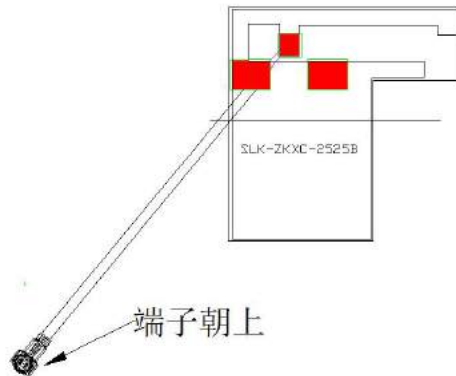
供应商地址: 深圳市宝安区西乡街道南昌社区前湾硬科技产业园 C 栋 101

电 话: 18666299104

传 真: 0769-82553116

WIFI

1. Explanation of Product number :



Product Code:

- (1) Customer: 中科迅驰
- (2) Antenna Name: WIFI 天线 (WIFI Antenna)
- (3) Connector: 1.13 黑色线, 总长 80mm, 1代端子

2. Features

- * Stable and reliable in performances
- * Compact size
- * RoHS compliance

3. Applications

- * IEEE802.11 (b/g/n)
- * Hand-held devices when WIFI (802.11b/g/n) functions are needed

4. Description

Holy bond's FPC antenna series are specially designed for WIFI (802.11b/g/n) applications. Based on Holy bond's proprietary design and processes, this FPC antenna has excellent stability and sensitivity to consistently provide high signal reception efficiency.

5. Electrical Specifications

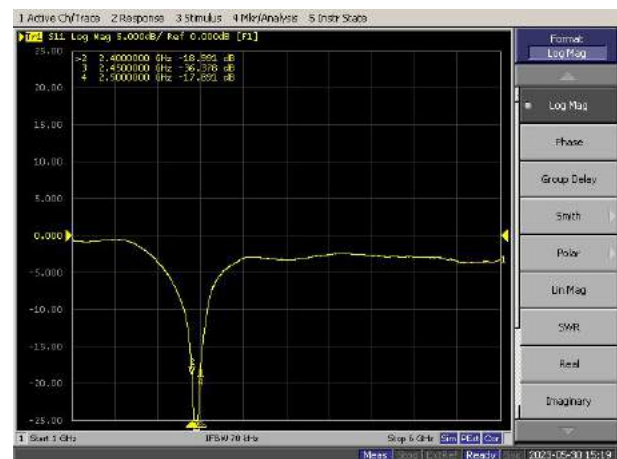
5-1

Characteristics	Specifications	Unit
Outline Dimensions	25.18x25x0.12	mm
Center Frequency	2.4-2.5	GHz
Bandwidth(under-10dB return loss)	130min	MHz
VSWR	3max	

5-2.

VSWR

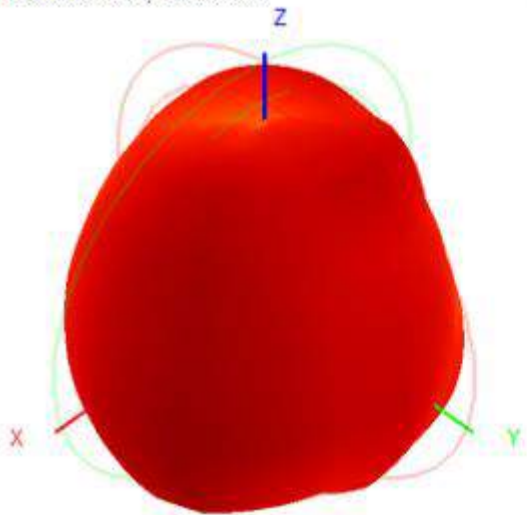
S11



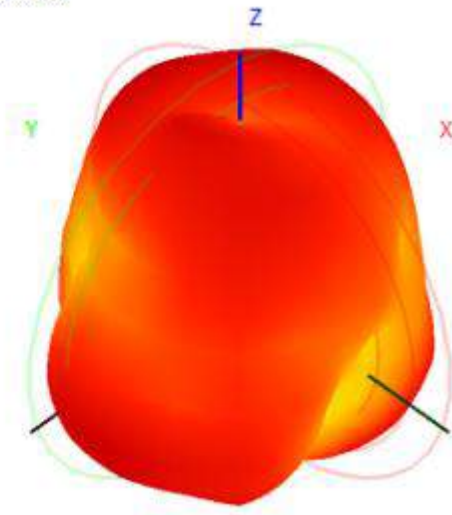
5-3.WIFI +BT Antenna Gain/Efficiency/Radiation Pattern of 3D

Frequency (MHz)	2400.0	2410.0	2420.0	2430.0	2440.0	2450.0	2460.0	2470.0	2480.0	2490.0	2500.0
Efficiency (dBi)	-2.35	-2.22	-2.32	-2.16	-2.27	-2.32	-2.31	-2.41	-2.26	-2.19	-2.34
Gain (dBi)	1.78	1.99	2.04	2.14	2.15	2.03	2.33	2.15	2.43	2.41	2.25
Efficiency (%)	58.19	60.03	58.59	60.80	59.28	58.66	58.81	57.39	59.48	60.44	58.37

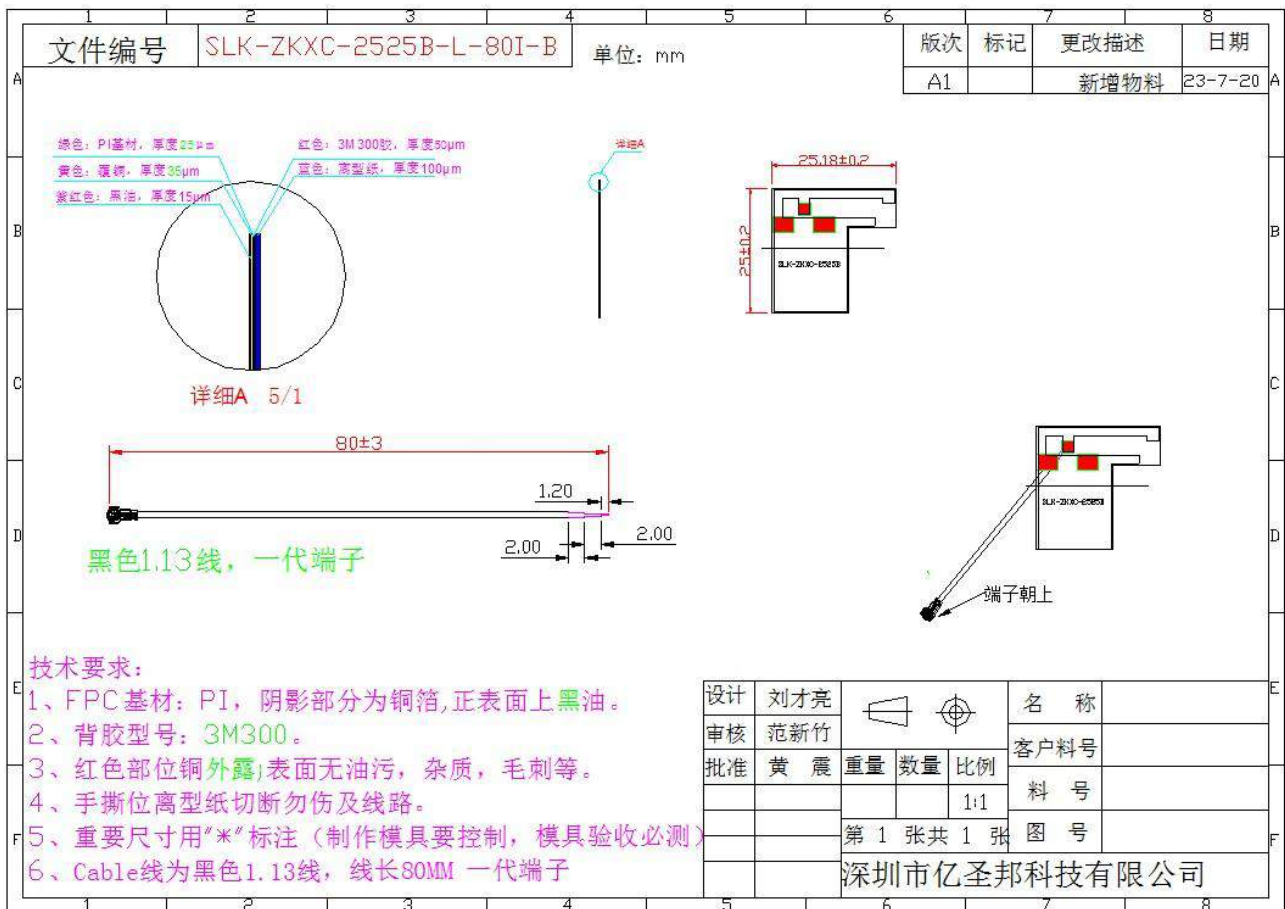
2450.0MHz H+V, Eff: 58.7%



Back View



6. Antenna Dimensions (unit: mm)



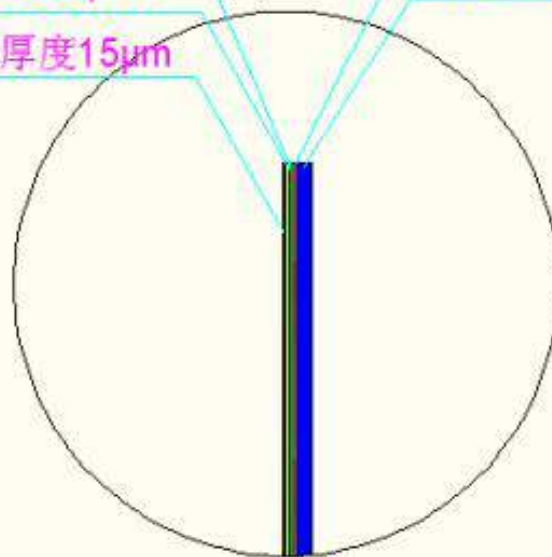
绿色: PI基材, 厚度25 μ m

红色: 3M300胶, 厚度50 μ m

黄色: 覆铜, 厚度35 μ m

蓝色: 离型纸, 厚度100 μ m

紫红色: 黑油, 厚度15 μ m



详细A 5/1

7. Antenna Picture

