

1

Thank you for purchasing the new **Zenit1200** DualBand Wireless AC USB Adapter from Nexxt Solutions™. In order to take advantage of this advanced wireless technology, we recommend including our Dual Band AC wireless router in your network.

**Package contents**

If any of the following items are mismatched, missing or damaged, please contact the merchant from whom you purchased the unit for immediate replacement.

- One dual band AC USB adapter
- One quick installation guide
- One CD ROM (with a digital copy of the quick installation guide, and driver configuration tool)

2

**Installing the USB network adapter**

1. Insert the wireless USB adapter into an available USB port on your computer.



3

2. If the **Found New Hardware Wizard** system dialogue appears, select **Cancel** and use the included Setup Wizard software CD for fast installation



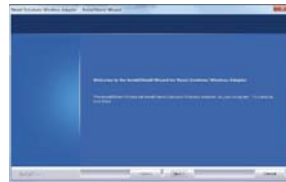
4

**Initial setup**

1. Insert the supplied software CD into the CD drive of your computer. Click on the **Run** button to continue. (If the autorun fails, double click **Setup.exe** in the software CD to manually install the software).

2. The **Welcome** screen will be displayed (as shown below) as soon as the system detects the adapter. Click **Next** to continue.

5



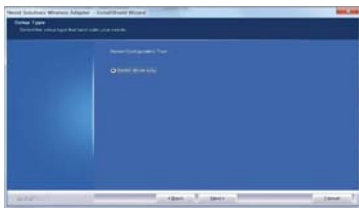
6

3. When this window appears on your screen, check the box next to **I accept the terms of the license agreement**, followed by **Next**.



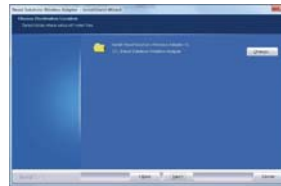
7

4. After selecting **Install driver only** in this stage, click on **Next** to continue.



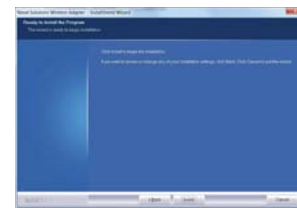
8

5. Proceed to select the location of the adapter installation files on your computer. You may use the default path or choose a different location where you wish to save the configuration files.



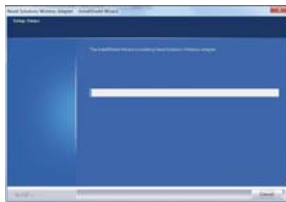
9

6. Now the installation window will be displayed. To begin the driver installation, click **Install**.



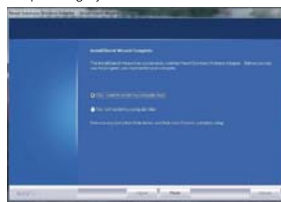
10

7. The status bar will show the progress of the driver installation process. Please allow a few minutes for the installation to conclude.



11

8. If the driver has been successfully installed, the user may be prompted to reboot the system either immediately or at a later time. This will depend on your operating system.



9. Click **Finish** to complete the installation.

12

**Wireless Network Connection in Windows 7**

1. Click the wireless connection icon in the lower right corner of the computer desktop to view the available network.
2. Select the wireless network you wish to connect to.



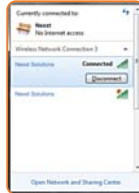
## 13

3. If the wireless network you are connecting to is protected, you will be prompted to enter a password. Click **OK** once you have typed the correct security key.



4. Once the connection has been established successfully, the **Connected** message will be displayed.

## 14



5. From then on, you will be able to start enjoying wireless access to the Internet.

6. You can disconnect the network, view its status, or modify the wireless network properties simply by right-clicking on the wireless network icon.

## 15

### FCC Statement

This device complies with Part 15 of the FCC Rules. Operation is subject to the following two conditions: 1) This device may not cause harmful interference, and 2) this device must accept any interference received, including interference that may cause undesired operation.

This equipment has been tested and found to comply with the limits for a Class B digital device, pursuant to Part 15 of the FCC Rules. These limits are designed to provide reasonable protection against harmful interference in a residential installation. This equipment

## 16

generates, uses and can radiate radio frequency energy and, if not installed and used in accordance with the instructions, may cause harmful interference to radio communications. However, there is no guarantee that interference will not occur in a particular installation. If this equipment does cause harmful interference to radio or television reception, which can be determined by turning the equipment off and on, the user is encouraged to try to correct the interference by one of the following measures:

- Reorient or relocate the receiving antenna.
- Increase the separation between the equipment and receiver.

## 17

- Connect the equipment into an outlet on a circuit different from that to which the receiver is connected.
- Consult the dealer or an experienced radio/TV technician for help.

**FCC caution:** Any changes or modifications not expressly approved by the party responsible for compliance could void the user's authority to operate this equipment.

The manufacturer is not responsible for any radio or TV interference caused by unauthorized modifications to this equipment.

## 18

### Radiation exposure statement

This equipment complies with FCC radiation exposure limits set forth for an uncontrolled environment. This device is restricted to be used in the indoor.

FCC ID: X4Y20006