

Auto-Lock Kit

Garage Door Lock Installation Instructions

Auto-Lock Contents

GARAGE DOOR LOCK - ORDER NO. 100040		
ITEM	DESCRIPTION	QTY
1	GARAGE DOOR LOCK	1
2	COUNTERSUNK HEAD SCREW ZN M6 X 14	2
3	TAPTITE "P" BLACK SCREW M3 X 12	4
4	BATTERY C-LR14	2
5	WIRELESS BASE STATION MODULE	1
6	DRILLING TEMPLATE LABEL	1



WARNING! Ensure the opener is not engaged when the Auto-lock is being used with only the bolt unit. Failure to do so may void the warranty of the opener.



CAUTION: Ensure bolt on Auto-lock is free to move during limit setup.

Bracket Kit (Kit sold separately)

DOOR BRACKET KITS		
ITEM	STRIKER BRACKET FOR DOOR:	KIT
7	PANELIFT, PANELIFT GEN II, PANELIFT ICON, PANELMASTA, FIRMAPANEL, P7, DESIGN-A-DOOR, ENVIROPANEL, SMOOTH-PANEL & TOUGHPANEL	MC0104
8	STORMSHIELD	MC0105
9	TONGUE AND GROOVE	MC0106
FASTENER PACK		
ITEM	DESCRIPTION	QTY
10	FLANGE HEAD TEK SCREWS 20 X 25 CL4	4
11	MUSHROOM HEAD BOLTS 1/4" - 20 X 1/2"	3
12	FLANGE NUT 1/4"	3



WARNING!

This device will slide a bolt into the guide track automatically when the door is closed.
Not suitable for garages that have only one exit.

For emergency release press the emergency unlock button on the lock. This will disengage the lock from the guide track and allow you to disengage the opener and open the door. The lock will re-engage after the next complete cycle.

It is our strong recommendation that your operator be fitted with **SAFETY BEAMS**.

Safety Beams detect any obstructions in the door/gate's path and override automatic operation if one presents.

For USE ONLY with the following garage door operators: ATS-2 & ATS-3.

NOTE: The grantee is not responsible for any changes or modifications not expressly approved by the party responsible for compliance. Such modifications could void the user's authority to operate the equipment.

To comply with FCC/IC RF exposure limits for general population / uncontrolled exposure, the antenna(s) used for this transmitter must be installed to provide a separation distance of at least 20cm from all persons and must not be co-located or operating in conjunction with any other antenna or transmitter.



AVERTISSEMENT

Ce dispositif insèrera automatiquement un verrou dans le rail de guidage lorsque la porte sera fermée. Il ne convient pas aux garages pourvus d'une seule sortie.

Pour activer le système de déverrouillage de secours, appuyez sur le bouton de déverrouillage de secours situé sur le verrou. Ceci entraînera le retrait du verrou du rail de guidage et vous permettra de libérer le dispositif d'ouverture et d'ouvrir la porte. Le verrou sera de nouveau activé au terme du prochain cycle complet.

Nous vous recommandons vivement d'équiper votre dispositif d'ouverture de **FAISCEAUX DE SÉCURITÉ**.

Ceux-ci détectent tout obstacle sur le chemin de la porte/du portail et prennent le relais du mode automatique si le passage n'est pas dégagé.

Conçu pour être utilisé uniquement avec les ouvre portes de garage suivants : ATS-2 et ATS-3

REMARQUE : Le Bénéficiaire n'est pas responsable des transformations ou modifications non expressément autorisées par la partie responsable de la conformité. De telles modifications peuvent invalider le droit à utiliser l'équipement.

Pour respecter les limites d'exposition de la FCC/IC RF relatives à la population générale/l'exposition incontrôlée, la ou les antenne(s) utilisée(s) pour cet émetteur doit(vent) être installée(s) de façon à garantir une distance de séparation d'au moins 20 cm avec toutes les personnes, et ne doit(vent) pas être positionnée(s) ou utilisée(s) au même endroit qu'une autre antenne ou un autre émetteur.

Important Safety Instructions

<p>WARNING!</p> <ul style="list-style-type: none"> DO NOT attempt to disassemble, repair or modify the product. This will invalidate the warranty. DO NOT allow children to play with the Auto-Lock. DO NOT install in garages that have only one exit. DO NOT cover, paint or lubricate the product. 	<p>AVERTISSEMENT</p> <p>Ce dispositif insèrera automatiquement un verrou dans le rail de guidage lorsque la porte sera fermée. Il ne convient pas aux garages pourvus d'une seule sortie.</p> <p>Pour activer le système de déverrouillage de secours, appuyez sur le bouton de déverrouillage de secours situé sur le verrou. Ceci entraînera le retrait du verrou du rail de guidage et vous permettra de libérer le dispositif d'ouverture et d'ouvrir la porte. Le verrou sera de nouveau activé au terme du prochain cycle complet.</p>
<p>CAUTION:</p> <p>BURNS</p> <ul style="list-style-type: none"> DO NOT handle damaged or leaking batteries The Auto-Lock Kit contains sealed lead-acid batteries that must be disposed of properly at the end of their useful life. <p>MUSCLE STRAIN</p> <ul style="list-style-type: none"> DO NOT attempt to lift the door manually when the Auto-lock is engaged. 	<p>ATTENTION :</p> <p>CHUTE DE L'ÉCHELLE</p> <ul style="list-style-type: none"> Vérifiez que l'échelle est adaptée à ce travail. Veillez à ce que l'échelle repose sur un sol plat. Lorsque l'utilisateur se tient sur l'échelle, veillez à ce que les points de contact soient au nombre de trois. <p>BRÛLURES</p> <ul style="list-style-type: none"> NE PAS manipuler des piles endommagées ou qui coulent Le kit de verrouillage automatique contient des piles plomb-acide scellées qui doivent être correctement éliminées au terme de leur vie utile.

prior to installation

Preparation - setting the door limits

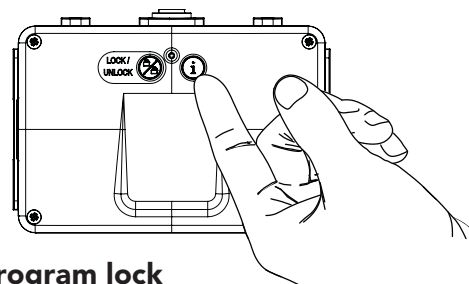
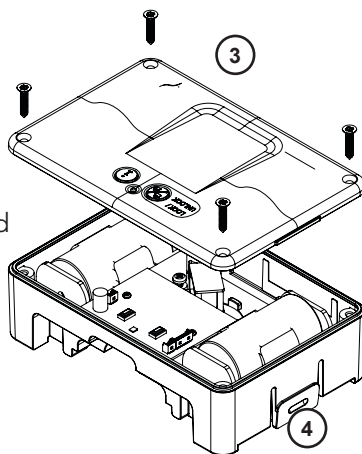
Ensure the door limits have been set on the opener, prior to installing the Auto-lock. Refer to the opener manual for instructions.



WARNING! remove all manual locking systems prior to installing lock. Any damage as a result of a manual lock will void the warranty for the door, Auto-lock and opener.

install batteries

- Insert batteries (4) into drive unit.
- Place cover back on drive unit and secure with 4 x screws (3).

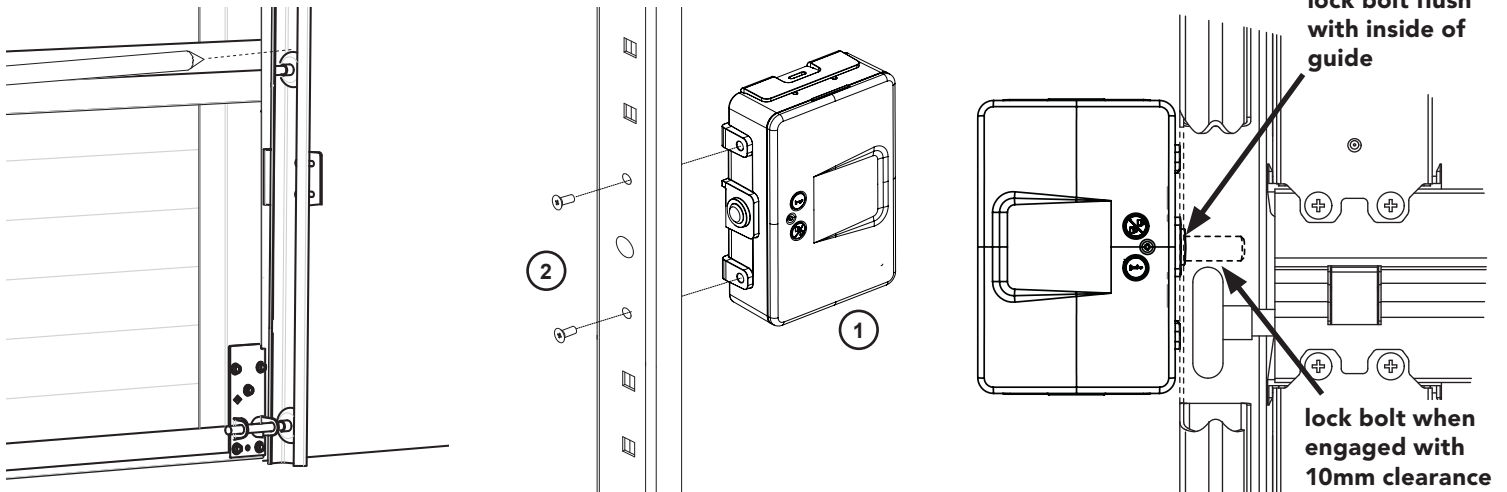


program lock

- Press and hold the info button (i) on drive unit until the light goes red.
- Then press the lock/unlock button to test the drive unit.

standard installation (side mount)

preparation - no brackets, mounting on track

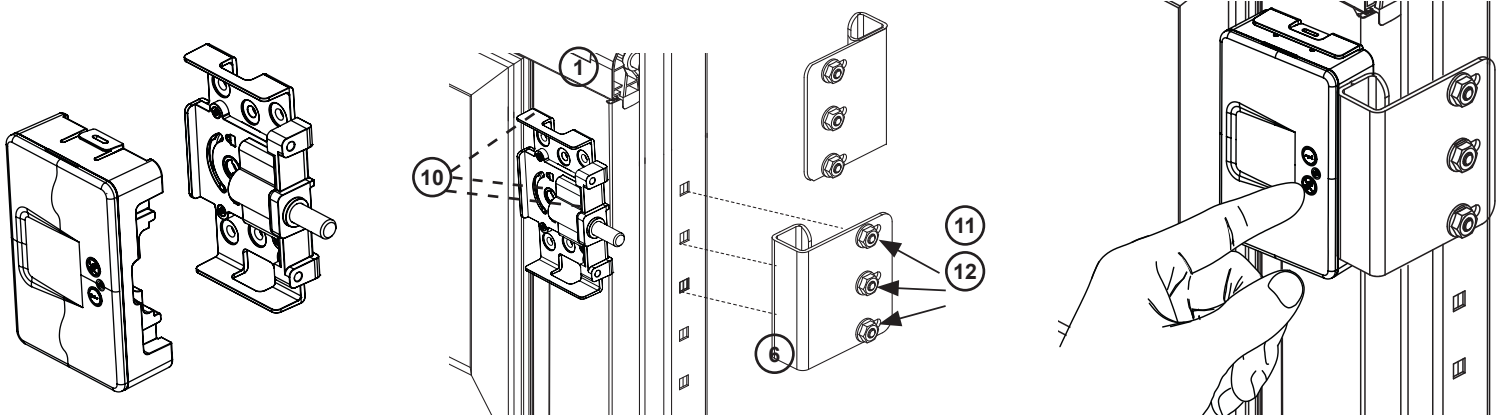


- With the door closed, mark the position of the top of the second door wheel on the inside of the track.
- Place the drilling template (6) label with the Datum line on top of the line marked inside.
- Using an 6mm and 18mm stepped drill, drill marked holes through the guide and remove any burrs from holes.
- Assemble the Autolock (1) to the track using 2 x screws (2),
- Close the door and check the position of the lock to the wheel, there should be a 10mm clearance.
- Test the operation of the AutoLock by pressing the lock/unlock button to ensure the lock bolt fully engages through the guide without interference.

**PROCEED TO CONNECTING
BASE STATION TO THE OPENER.**

limited side room installation (door mount)

preparation - brackets, mounting on door

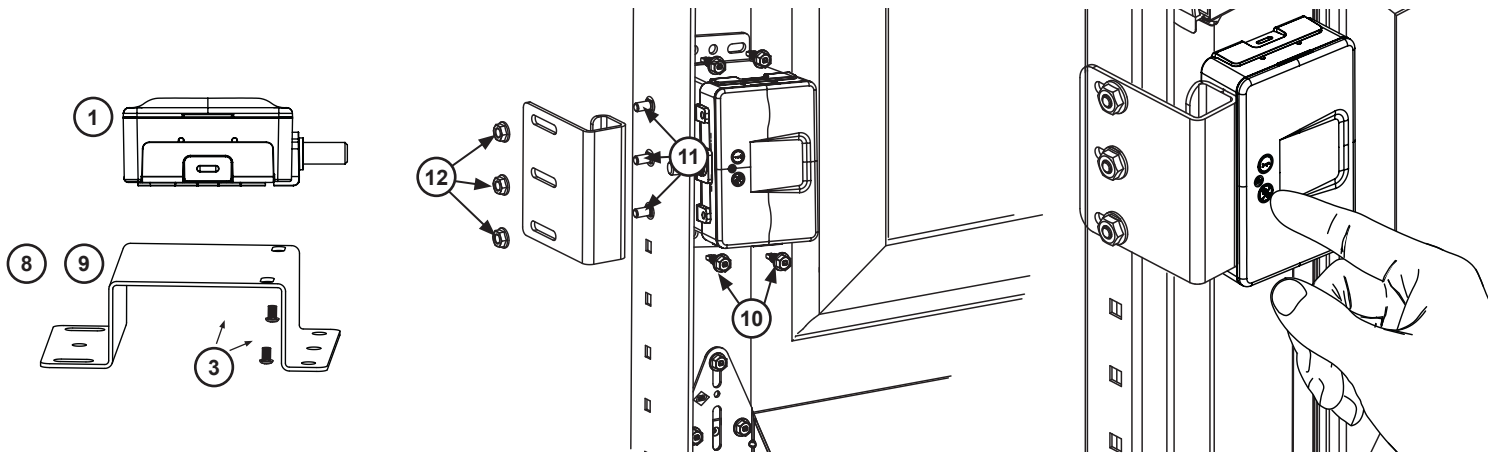


- Remove the lock drive unit from the lock mechanism by depressing the two tabs on the top and bottom of the unit and pulling apart.
- Close door and mark mounting position of both striker and lock, by holding in place.
- Open door and affix the striker bracket (6) to the track with 3 x bolts (11) and nuts (12).
- Close the door, align the lock mechanism (1) on the bottom panel door stile so that the lock bolt engages fully into the striker bracket (6) and fix using 4 x flange head tek screws (10).
- Fit the lock drive unit to the lock mechanism.
- Test the operation of the AutoLock by pressing the lock/unlock button to ensure the lock bolt fully engages the striker without interference.

**PROCEED TO CONNECTING BASE STATION
TO THE OPENER.**

StormShield and Tongue & Groove installation (kits sold separately)

preparation - mounting on door stile

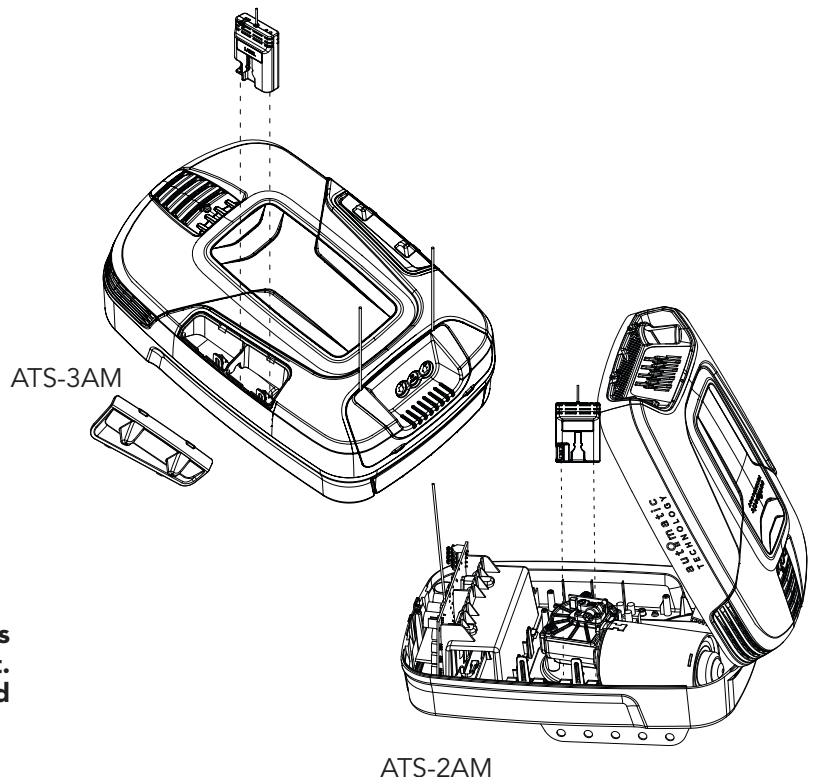


- a. Fit the mounting bracket (8) or (9) to the lock mechanism (1) using 2 x countersunk head screws M6 x 14 (3).
- b. Close the door to determine mounting position between the reinforcing braces on the bottom door panel and mark. Mount the bracket and lock mechanism as marked with the 4 flange head tek screws 20 x 25 CL4 (10), however do not fully tighten as further final adjustment may be required.
- c. With the door in the closed position align the striker bracket with the lock
- d. Drill 3 x ¼ holes as marked in the tracklock and fix with 3 x bolts (11) and nuts (12).
- e. Test the operation of the AutoLock by pressing the lock/unlock button to ensure the lock bolt fully engages the striker without interference.

PROCEED TO CONNECTING BASE STATION TO THE OPENER.

connect basestation to opener

- a. Disconnect the power supply to the opener.
- b. For ATS-3AM:
 - i. Remove the left hand side pocket from the opener.
 - ii. Reach inside the opener and pull out the 4 pin harness and connect to the wireless basestation module.
- For ATS-2AM:
 - iii. Remove back cover to expose control board.
 - iv. Reach inside the opener and pull out the 4 pin harness and connect to the wireless basestation module.
- c. Place the module into the pocket and refit the cover.
- d. Reconnect power to the opener and test operation.
- e. Upon completion of a full cycle the lock will engage into the track.



If a PE Beam is installed ensure that the channels on the basestation on each device are different. The channel on the basestation can be changed by sliding the switch in either direction.

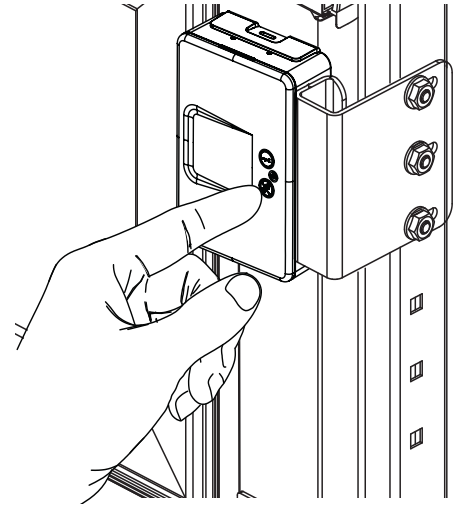
emergency operation

Press the emergency lock/unlock button on the front of the Auto-Lock to disengage the locking bolt from the guide track and allow you to disengage the opener and open the door.



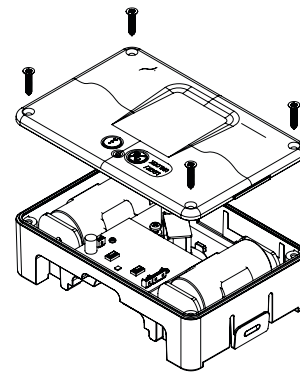
WARNING! The emergency lock/unlock button on this product is not to be used as a primary means of locking the door under normal circumstances.

The emergency lock/unlock button is to be used only in case of power outage or emergency.



battery change

- Replace lock batteries (2 x C-LR 14) immediately when the Auto-lock LED's red and green lights flash 3 times or are flashing slowly.
- Remove cover by unscrewing the four screws on the main cover.
- Replace batteries, refit cover and secure with screws.
- Operate opener to complete a full open / close cycle and ensure Auto-lock engages.



Remove screws to open main cover

LED status

lock position status

The status normally displays for 10secs after lock movement / button press.

LED STATUS INDICATORS		
RED	GREEN	LOCK STATUS
FLASHING RAPIDLY		LOCKING
ON		LOCKED
	FLASHING RAPIDLY	UNLOCKING
	ON	UNLOCKED
ON	ON	ERROR
FLASHING SLOWLY	FLASHING SLOWLY	LOW BATTERY
FLASHING ALTERNATIVELY	FLASHING ALTERNATIVELY	NO LINK WITH BASESTATION

troubleshooting

problem	cause	remedy
door not moving	communication failure	switch off power to opener, the switch back on after 30 secs (If a battery backup is installed press & hold STOP/ SET button on the opener until power ceases). Press the lock/ unlock button on the lock to test operation. Press the (i) button on the lock & refer to the LED status table above.
main light flashes 3 times on the opener	low battery indicator	replace the batteries as per instructions below.
door not moving and no lights on lock	limited battery power	press the (i) button on the lock to see if there is power in the battery. no lights - change battery lights - check LED status table.
main light flashing 5 times on the opener	lock is not unlocked and preventing the door moving	check lock, test by pressing emergency release button on the lock and then test door operation.
lock is not unlocking and preventing doors movement	lock jammed door wheel is pushing on the lock barrel.	remove the lock drive unit from the locking mechanism and test the manual operation of the bolt by engaging and disengaging the lock manually. check the lock barrel is not catching on the track.
red and green lights both on solid on the lock.	error with lock	press the unlock button on the lock to test operation. switch off power to opener, then switch back on after 30 secs (If a battery backup is installed press & hold STOP/ SET button on the opener until power ceases). Press the lock/ unlock button on the lock to test operation. If it does not move contact your installer.
red and green lights on one lock flashing slowly	low battery	change battery, then test operation of lock by pressing the lock / unlock button.
red and green lights flashing alternatively	no link to opener	press the unlock button on the lock with flashing lights to disengage the bolt. Call your installer for assistance.

Radiation Exposure Statement

This device complies with Part 15 of the FCC Rules / Innovation, Science and Economic Development (ISED) Canada's licence-exempt RSS(s). Operation is subject to the following two conditions:

- (1) This device may not cause harmful interference, and
- (2) This device must accept any interference received, including interference that may cause undesired operation.

This equipment complies with FCC and ISED radiation exposure limits set forth for an uncontrolled environment. This equipment should be installed and operated with minimum distance 20cm between the radiator and the body.

Déclaration d'exposition aux radiations:

L'émetteur/récepteur exempt de licence contenu dans le présent appareil est conforme aux CNR d'Innovation, Sciences et Développement économique Canada applicables aux appareils radio exempts de licence. L'exploitation est autorisée aux deux conditions suivantes :

- (1) L'appareil ne doit pas produire de brouillage;
- (2) L'appareil doit accepter tout brouillage radioélectrique subi, même si le brouillage est susceptible d'en compromettre le fonctionnement.

Cet équipement est conforme aux limites d'exposition aux rayonnements FCC et ISED établies pour un environnement non contrôlé. Cet équipement doit être installé et utilisé avec un minimum de 20 cm de distance entre la source de rayonnement et votre corps.

FCC Caution: Any changes or modifications not expressly approved by the party responsible for compliance could void the user's authority to operate this equipment.

FCC Class B Information

This equipment has been tested and found to comply with the limits for a Class B digital device, pursuant to part 15 of the FCC Rules. These limits are designed to provide reasonable protection against harmful interference in a residential installation. This equipment generates, uses and can radiate radio frequency energy and, if not installed and used in accordance with the instructions, may cause harmful interference

to radio communications. However, there is no guarantee that interference will not occur in a particular

If this equipment does cause harmful interference to radio or television reception, which can be determined by turning the equipment off and on, the user is encouraged to try to correct the interference by one or more of the following measures:

- Reorient or relocate the receiving antenna.
- Increase the separation between the equipment and receiver.
- Connect the equipment into an outlet on a circuit different from that to which the receiver is connected.
- Consult the dealer or an experienced radio/TV technician for help.

CAN ICES-003 (B) / NMB-003

