

Measurement Report for Band 7: LTE-FDD (SC-FDMA, 1 RB, 20 MHz, QPSK)

RBPosition:Low AntennaCfg:SISO, BACK

Exposure Conditions

Band	Band 7	TSL Permittivity	37.4
Frequency [MHz] Channel Number	2535.0 21100	TSL Conductivity [S/m]	1.84
Group UID	LTE-FDD 10169-CAF	Phantom Section TSL	Flat HSL
Conversion Factor	7.82	Test Distance [mm]	0.00

Hardware Setup

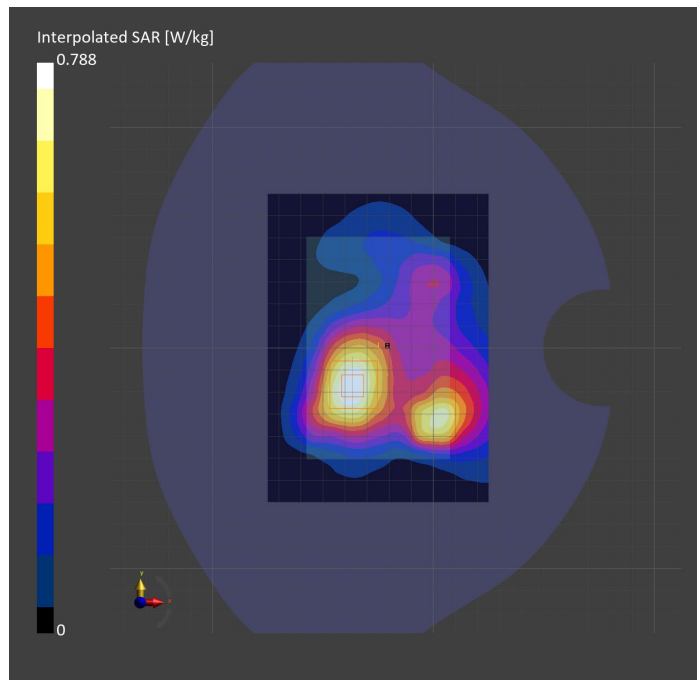
Probe Calibration Date	EX3DV4 - SN3989 2023-01-26	Phantom	Twin-SAM V5.0 (30deg probe tilt)
DAE Calibration Date	DAE4 Sn1544 2023-01-24	TSL Type	HBBL-600-10000
Software Version	16.2.0.1425		

Scan Setup

	Area Scan	Zoom Scan
Grid Extents [mm]	100.0 x 140.0	30.0 x 30.0 x 30.0
Grid Steps [mm]	10.0 x 10.0	5.0 x 5.0 x 1.5
Sensor Surface [mm]	3.0	1.4
Graded Grid	n/a	Yes
M2/M1 [%]		82.6
Dist 3dB Peak [mm]		14.2

Measurement Results

	Area Scan	Zoom Scan
psSAR1g [W/Kg]	0.416	0.445
psSAR10g [W/Kg]	0.226	0.251
Power Drift [dB]	n/a	0.16



Measurement Report for Band 7: LTE-FDD (SC-FDMA, 1 RB, 20 MHz, QPSK) RBPosition:Low AntennaCfg:SISO, EDGE LEFT

Exposure Conditions

Band	Band 7	TSL Permittivity	40.2
Frequency [MHz] Channel Number	2535.0 21100	TSL Conductivity [S/m]	1.86
Group UID	LTE-FDD 10169-CAF	Phantom Section TSL	Flat HSL
Conversion Factor	8.02	Test Distance [mm]	0.00

Hardware Setup

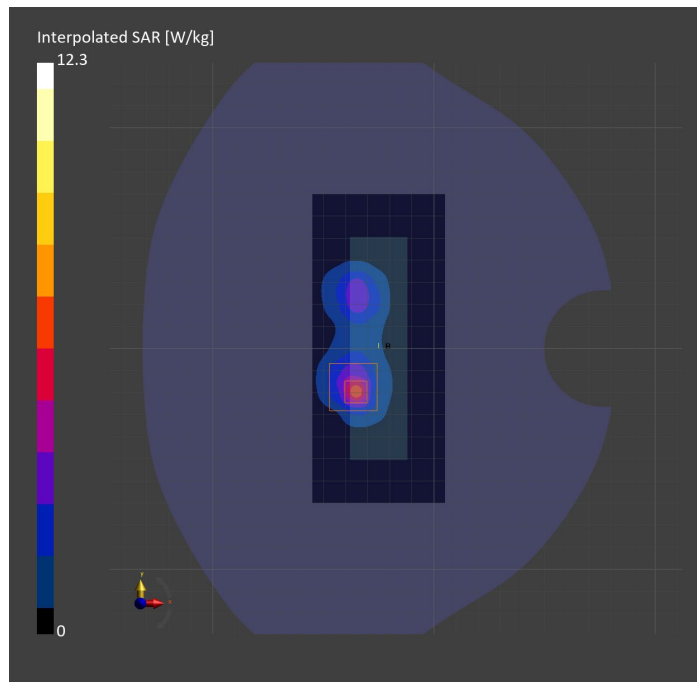
Probe Calibration Date	EX3DV4 - SN7356 2023-03-17	Phantom	Twin-SAM V5.0 (30deg probe tilt)
DAE Calibration Date	DAE4 Sn1544 2023-01-24	TSL Type	HBBL-600-10000
Software Version	16.2.0.1425		

Scan Setup

	Area Scan	Zoom Scan
Grid Extents [mm]	60.0 x 140.0	30.0 x 30.0 x 30.0
Grid Steps [mm]	10.0 x 10.0	5.0 x 5.0 x 1.5
Sensor Surface [mm]	3.0	1.4
Graded Grid	n/a	Yes
M2/M1 [%]		72.9
Dist 3dB Peak [mm]		5.7

Measurement Results

	Area Scan	Zoom Scan
psSAR1g [W/Kg]	4.48	4.44
psSAR10g [W/Kg]	1.75	1.69
Power Drift [dB]	n/a	-0.04



Measurement Report for Band 12: LTE-FDD (SC-FDMA, 1 RB, 10 MHz, QPSK) RBPosition:Low AntennaCfg:SISO, BACK

Exposure Conditions

Band	Band 12	TSL Permittivity	44.1
Frequency [MHz] Channel Number	707.5 23095	TSL Conductivity [S/m]	0.892
Group UID	LTE-FDD 10175-CAH	Phantom Section TSL	Flat HSL
Conversion Factor	10.22	Test Distance [mm]	0.00

Hardware Setup

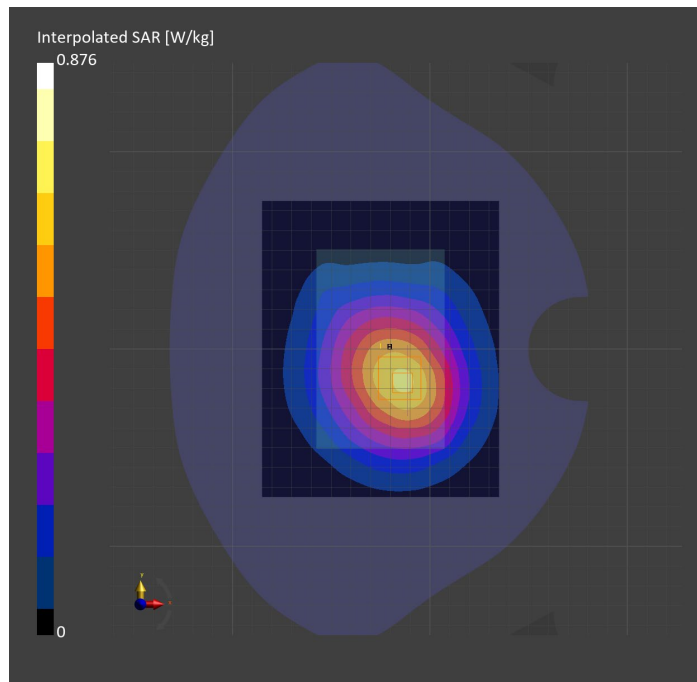
Probe Calibration Date	EX3DV4 - SN3989 2023-01-26	Phantom	Twin-SAM V5.0 (30deg probe tilt)
DAE Calibration Date	DAE4 Sn1544 2023-01-24	TSL Type	HBBL-600-10000
Software Version	16.2.0.1425		

Scan Setup

	Area Scan	Zoom Scan
Grid Extents [mm]	120.0 x 150.0	30.0 x 30.0 x 30.0
Grid Steps [mm]	15.0 x 15.0	6.0 x 6.0 x 1.5
Sensor Surface [mm]	3.0	1.4
Graded Grid	n/a	Yes
M2/M1 [%]		87.9
Dist 3dB Peak [mm]		> 15.0

Measurement Results

	Area Scan	Zoom Scan
psSAR1g [W/Kg]	0.595	0.611
psSAR10g [W/Kg]	0.414	0.437
Power Drift [dB]	n/a	-0.06



Measurement Report for Band 12: LTE-FDD (SC-FDMA, 1 RB, 10 MHz, QPSK) RBPosition:Low AntennaCfg:SISO, BACK

Exposure Conditions

Band	Band 12	TSL Permittivity	42.4
Frequency [MHz] Channel Number	707.5 23095	TSL Conductivity [S/m]	0.876
Group UID	LTE-FDD 10175-CAH	Phantom Section TSL	Flat HSL
Conversion Factor	10.22	Test Distance [mm]	0.00

Hardware Setup

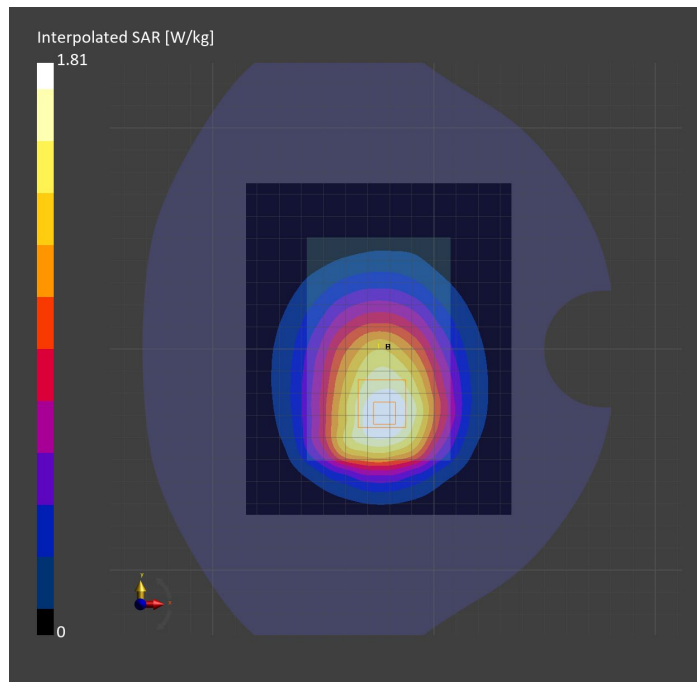
Probe Calibration Date	EX3DV4 - SN3989 2023-01-26	Phantom	Twin-SAM V5.0 (30deg probe tilt)
DAE Calibration Date	DAE4 Sn1544 2023-01-24	TSL Type	HBBL-600-10000
Software Version	16.2.0.1425		

Scan Setup

	Area Scan	Zoom Scan
Grid Extents [mm]	120.0 x 150.0	30.0 x 30.0 x 30.0
Grid Steps [mm]	15.0 x 15.0	6.0 x 6.0 x 1.5
Sensor Surface [mm]	3.0	1.4
Graded Grid	n/a	Yes
M2/M1 [%]		88.3
Dist 3dB Peak [mm]		> 15.0

Measurement Results

	Area Scan	Zoom Scan
psSAR1g [W/Kg]	1.24	1.25
psSAR10g [W/Kg]	0.865	0.882
Power Drift [dB]	n/a	0.00



Measurement Report for Band 13: LTE-FDD (SC-FDMA, 1 RB, 10 MHz, QPSK) RBPosition:Mid AntennaCfg:SISO, BACK

Exposure Conditions

Band	Band 13	TSL Permittivity	43.8
Frequency [MHz] Channel Number	782.0 23230	TSL Conductivity [S/m]	0.920
Group UID	LTE-FDD 10175-CAH	Phantom Section TSL	Flat HSL
Conversion Factor	10.22	Test Distance [mm]	0.00

Hardware Setup

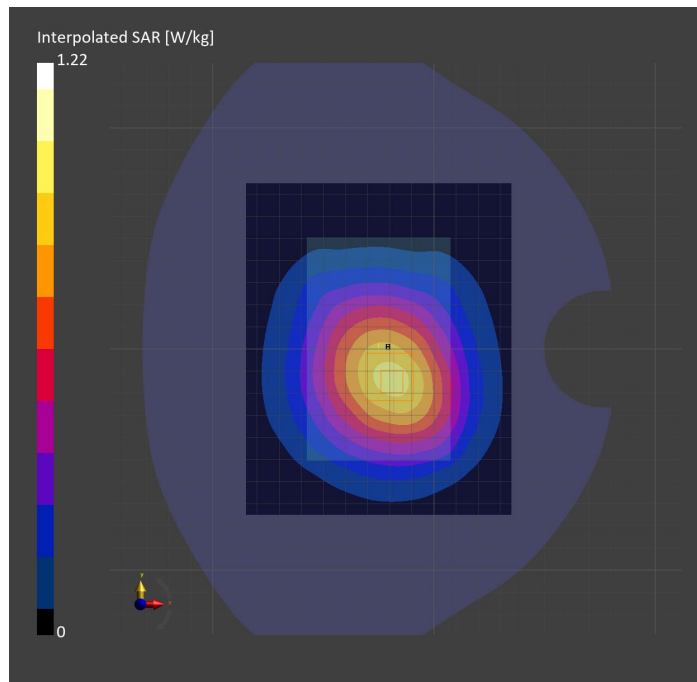
Probe Calibration Date	EX3DV4 - SN3989 2023-01-26	Phantom	Twin-SAM V5.0 (30deg probe tilt)
DAE Calibration Date	DAE4 Sn1544 2023-01-24	TSL Type	HBBL-600-10000
Software Version	16.2.0.1425		

Scan Setup

	Area Scan	Zoom Scan
Grid Extents [mm]	120.0 x 150.0	30.0 x 30.0 x 30.0
Grid Steps [mm]	15.0 x 15.0	6.0 x 6.0 x 1.5
Sensor Surface [mm]	3.0	1.4
Graded Grid	n/a	Yes
M2/M1 [%]		89.0
Dist 3dB Peak [mm]		> 15.0

Measurement Results

	Area Scan	Zoom Scan
psSAR1g [W/Kg]	0.840	0.875
psSAR10g [W/Kg]	0.583	0.635
Power Drift [dB]	n/a	-0.03



Measurement Report for Band 13: LTE-FDD (SC-FDMA, 1 RB, 10 MHz, QPSK) RBPosition:Mid AntennaCfg:SISO, EDGE LEFT

Exposure Conditions

Band	Band 13	TSL Permittivity	42.1
Frequency [MHz] Channel Number	782.0 23230	TSL Conductivity [S/m]	0.905
Group UID	LTE-FDD 10175-CAH	Phantom Section TSL	Flat HSL
Conversion Factor	10.22	Test Distance [mm]	0.00

Hardware Setup

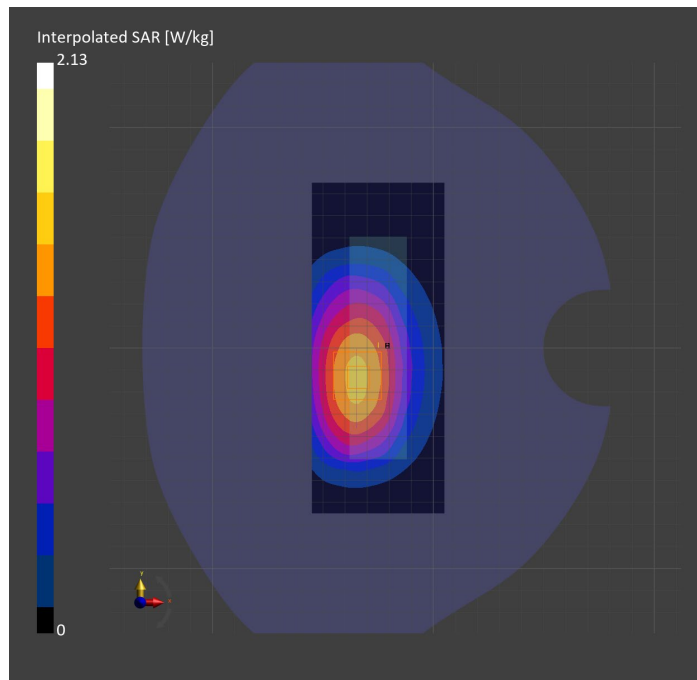
Probe Calibration Date	EX3DV4 - SN3989 2023-01-26	Phantom	Twin-SAM V5.0 (30deg probe tilt)
DAE Calibration Date	DAE4 Sn1544 2023-01-24	TSL Type	HBBL-600-10000
Software Version	16.2.0.1425		

Scan Setup

	Area Scan	Zoom Scan
Grid Extents [mm]	60.0 x 150.0	30.0 x 30.0 x 30.0
Grid Steps [mm]	15.0 x 15.0	6.0 x 6.0 x 1.5
Sensor Surface [mm]	3.0	1.4
Graded Grid	n/a	Yes
M2/M1 [%]		84.1
Dist 3dB Peak [mm]		18.8

Measurement Results

	Area Scan	Zoom Scan
psSAR1g [W/Kg]	1.30	1.38
psSAR10g [W/Kg]	0.889	0.942
Power Drift [dB]	n/a	-0.02



Measurement Report for Band 14: LTE-FDD (SC-FDMA, 1 RB, 10 MHz, QPSK) RBPosition:Mid AntennaCfg:SISO, BACK

Exposure Conditions

Band	Band 14	TSL Permittivity	43.7
Frequency [MHz] Channel Number	793.0 23330	TSL Conductivity [S/m]	0.924
Group UID	LTE-FDD 10175-CAH	Phantom Section TSL	Flat HSL
Conversion Factor	10.22	Test Distance [mm]	0.00

Hardware Setup

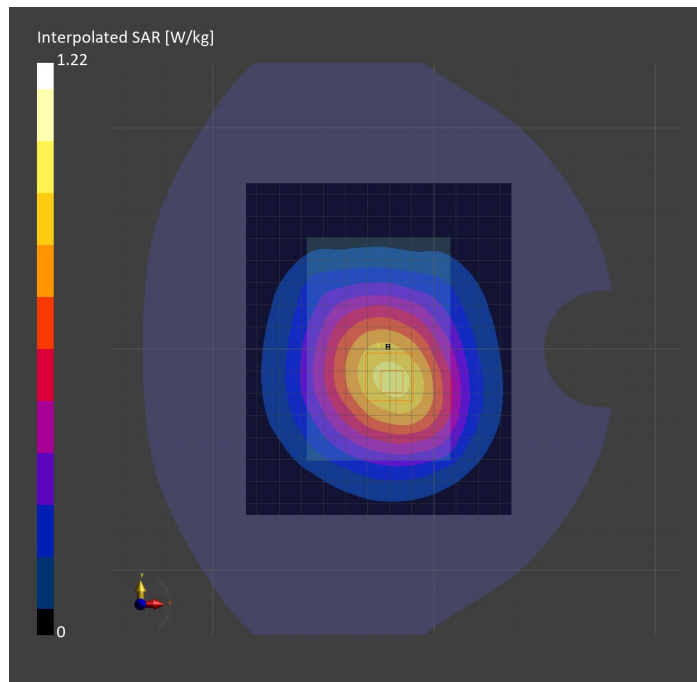
Probe Calibration Date	EX3DV4 - SN3989 2023-01-26	Phantom	Twin-SAM V5.0 (30deg probe tilt)
DAE Calibration Date	DAE4 Sn1544 2023-01-24	TSL Type	HBBL-600-10000
Software Version	16.2.0.1425		

Scan Setup

	Area Scan	Zoom Scan
Grid Extents [mm]	120.0 x 150.0	30.0 x 30.0 x 30.0
Grid Steps [mm]	15.0 x 15.0	6.0 x 6.0 x 1.5
Sensor Surface [mm]	3.0	1.4
Graded Grid	n/a	Yes
M2/M1 [%]		89.4
Dist 3dB Peak [mm]		> 15.0

Measurement Results

	Area Scan	Zoom Scan
psSAR1g [W/Kg]	0.839	0.881
psSAR10g [W/Kg]	0.582	0.641
Power Drift [dB]	n/a	-0.10



Measurement Report for Band 14: LTE-FDD (SC-FDMA, 1 RB, 10 MHz, QPSK) RBPosition:Mid AntennaCfg:SISO, BACK

Exposure Conditions

Band	Band 14	TSL Permittivity	42.1
Frequency [MHz] Channel Number	793.0 23330	TSL Conductivity [S/m]	0.909
Group UID	LTE-FDD 10175-CAH	Phantom Section TSL	Flat HSL
Conversion Factor	10.22	Test Distance [mm]	0.00

Hardware Setup

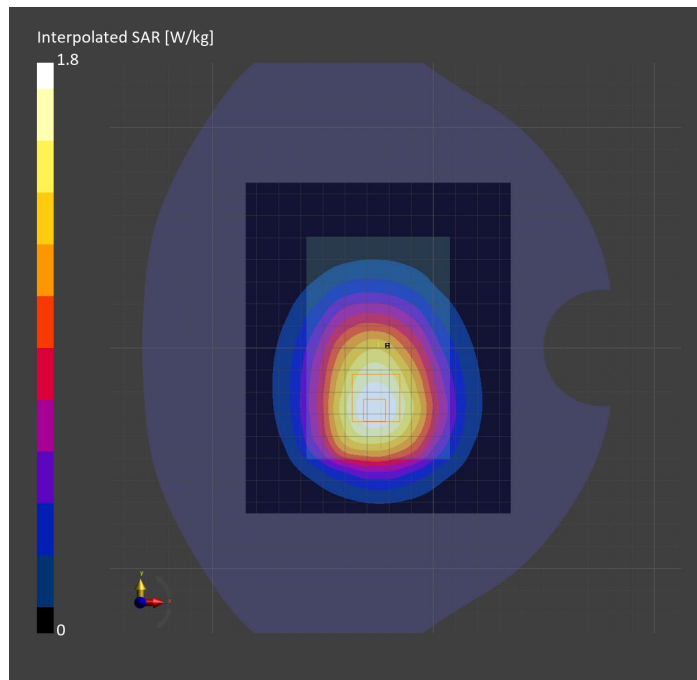
Probe Calibration Date	EX3DV4 - SN3989 2023-01-26	Phantom	Twin-SAM V5.0 (30deg probe tilt)
DAE Calibration Date	DAE4 Sn1544 2023-01-24	TSL Type	HBBL-600-10000
Software Version	16.2.0.1425		

Scan Setup

	Area Scan	Zoom Scan
Grid Extents [mm]	120.0 x 150.0	30.0 x 30.0 x 30.0
Grid Steps [mm]	15.0 x 15.0	6.0 x 6.0 x 1.5
Sensor Surface [mm]	3.0	1.4
Graded Grid	n/a	Yes
M2/M1 [%]		87.7
Dist 3dB Peak [mm]		> 15.0

Measurement Results

	Area Scan	Zoom Scan
psSAR1g [W/Kg]	1.23	1.26
psSAR10g [W/Kg]	0.842	0.890
Power Drift [dB]	n/a	-0.05



Measurement Report for Band 25: LTE-FDD (SC-FDMA, 1 RB, 20 MHz, QPSK) RBPosition:Mid AntennaCfg:SISO, BACK

Exposure Conditions

Band	Band 25	TSL Permittivity	40.6
Frequency [MHz] Channel Number	1882.5 26365	TSL Conductivity [S/m]	1.44
Group UID	LTE-FDD 10169-CAF	Phantom Section TSL	Flat HSL
Conversion Factor	8.46	Test Distance [mm]	0.00

Hardware Setup

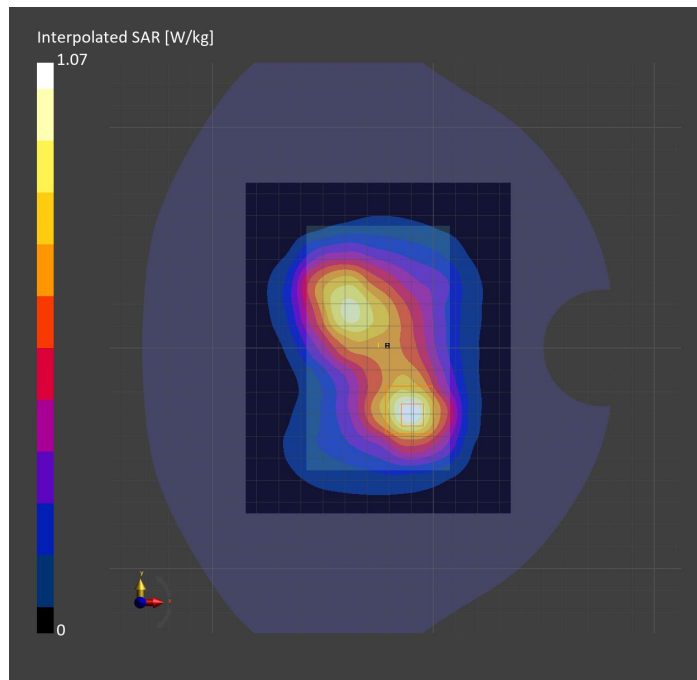
Probe Calibration Date	EX3DV4 - SN3989 2023-01-26	Phantom	Twin-SAM V5.0 (30deg probe tilt)
DAE Calibration Date	DAE4 Sn1544 2023-01-24	TSL Type	HBBL-600-10000
Software Version	16.2.0.1425		

Scan Setup

	Area Scan	Zoom Scan
Grid Extents [mm]	120.0 x 150.0	30.0 x 30.0 x 30.0
Grid Steps [mm]	15.0 x 15.0	6.0 x 6.0 x 1.5
Sensor Surface [mm]	3.0	1.4
Graded Grid	n/a	Yes
M2/M1 [%]		81.4
Dist 3dB Peak [mm]		14.0

Measurement Results

	Area Scan	Zoom Scan
psSAR1g [W/Kg]	0.597	0.606
psSAR10g [W/Kg]	0.332	0.347
Power Drift [dB]	n/a	-0.04



Measurement Report for Band 25: LTE-FDD (SC-FDMA, 1 RB, 20 MHz, QPSK) RBPosition:Mid AntennaCfg:SISO, FRONT

Exposure Conditions

Band	Band 25	TSL Permittivity	40.6
Frequency [MHz] Channel Number	1860.0 26140	TSL Conductivity [S/m]	1.43
Group UID	LTE-FDD 10169-CAF	Phantom Section TSL	Flat HSL
Conversion Factor	8.46	Test Distance [mm]	0.00

Hardware Setup

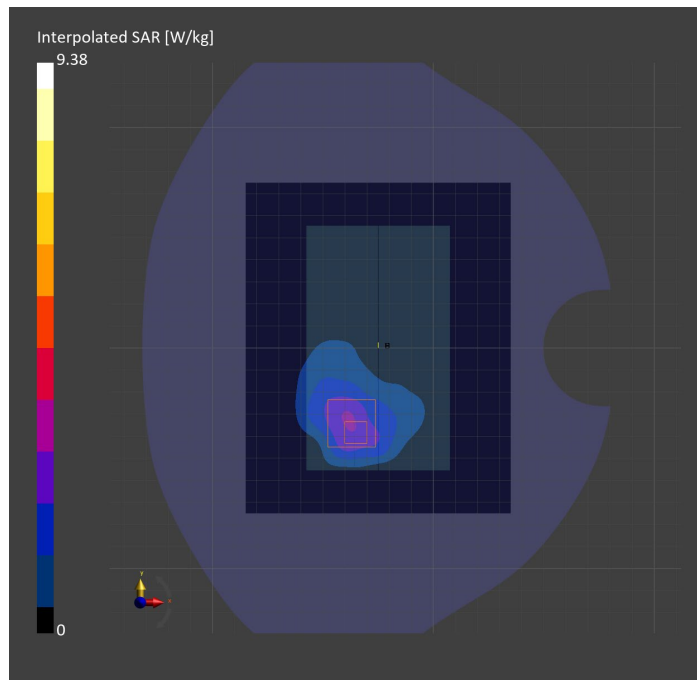
Probe Calibration Date	EX3DV4 - SN3989 2023-01-26	Phantom	Twin-SAM V5.0 (30deg probe tilt)
DAE Calibration Date	DAE4 Sn1544 2023-01-24	TSL Type	HBBL-600-10000
Software Version	16.2.0.1425		

Scan Setup

	Area Scan	Zoom Scan
Grid Extents [mm]	120.0 x 150.0	30.0 x 30.0 x 30.0
Grid Steps [mm]	15.0 x 15.0	5.1 x 5.1 x 1.5
Sensor Surface [mm]	3.0	1.4
Graded Grid	n/a	Yes
M2/M1 [%]		73.4
Dist 3dB Peak [mm]		6.2

Measurement Results

	Area Scan	Zoom Scan
psSAR1g [W/Kg]	2.70	3.77
psSAR10g [W/Kg]	1.52	1.79
Power Drift [dB]	n/a	-0.08



Measurement Report for Band 26: LTE-FDD (SC-FDMA, 1 RB, 15 MHz, QPSK) RBPosition:Low AntennaCfg:SISO, BACK

Exposure Conditions

Band	Band 26	TSL Permittivity	43.2
Frequency [MHz] Channel Number	831.5 26865	TSL Conductivity [S/m]	0.939
Group UID	LTE-FDD 10181-CAF	Phantom Section TSL	Flat HSL
Conversion Factor	9.57	Test Distance [mm]	0.00

Hardware Setup

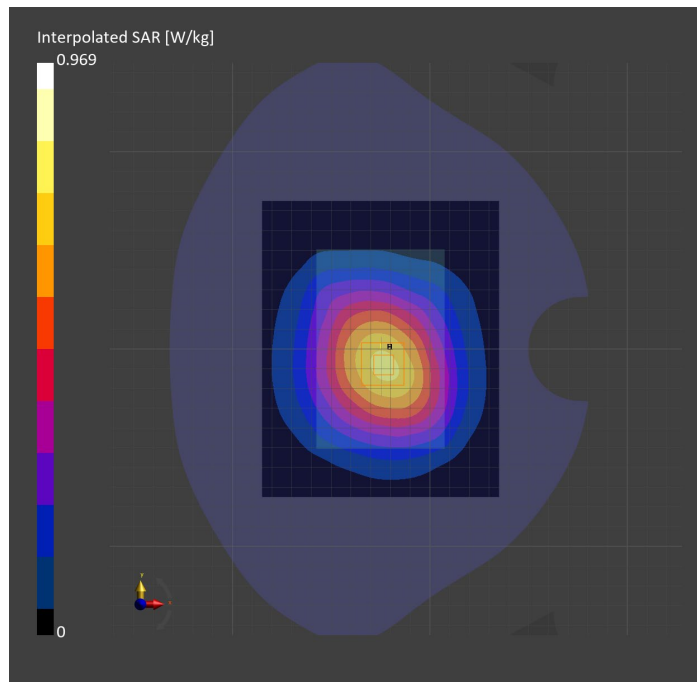
Probe Calibration Date	EX3DV4 - SN3989 2023-01-26	Phantom	Twin-SAM V5.0 (30deg probe tilt)
DAE Calibration Date	DAE4 Sn1544 2023-01-24	TSL Type	HBBL-600-10000
Software Version	16.2.0.1425		

Scan Setup

	Area Scan	Zoom Scan
Grid Extents [mm]	120.0 x 150.0	30.0 x 30.0 x 30.0
Grid Steps [mm]	15.0 x 15.0	6.0 x 6.0 x 1.5
Sensor Surface [mm]	3.0	1.4
Graded Grid	n/a	Yes
M2/M1 [%]		88.3
Dist 3dB Peak [mm]		> 15.0

Measurement Results

	Area Scan	Zoom Scan
psSAR1g [W/Kg]	0.661	0.693
psSAR10g [W/Kg]	0.459	0.504
Power Drift [dB]	n/a	-0.02



Measurement Report for Band 26: LTE-FDD (SC-FDMA, 1 RB, 15 MHz, QPSK) RBPosition:Low AntennaCfg:SISO, BACK

Exposure Conditions

Band	Band 26	TSL Permittivity	41.9
Frequency [MHz] Channel Number	831.5 26865	TSL Conductivity [S/m]	0.926
Group UID	LTE-FDD 10181-CAF	Phantom Section TSL	Flat HSL
Conversion Factor	9.57	Test Distance [mm]	0.00

Hardware Setup

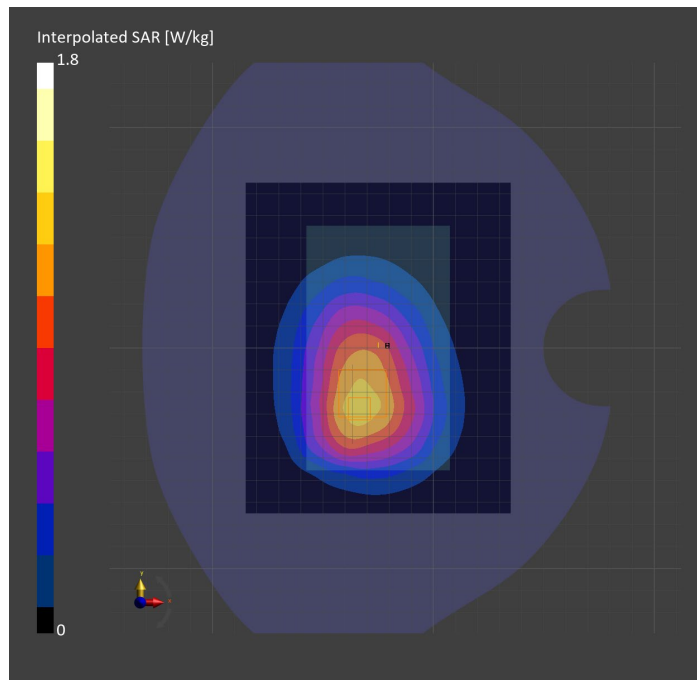
Probe Calibration Date	EX3DV4 - SN3989 2023-01-26	Phantom	Twin-SAM V5.0 (30deg probe tilt)
DAE Calibration Date	DAE4 Sn1544 2023-01-24	TSL Type	HBBL-600-10000
Software Version	16.2.0.1425		

Scan Setup

	Area Scan	Zoom Scan
Grid Extents [mm]	120.0 x 150.0	30.0 x 30.0 x 30.0
Grid Steps [mm]	15.0 x 15.0	6.0 x 6.0 x 1.5
Sensor Surface [mm]	3.0	1.4
Graded Grid	n/a	Yes
M2/M1 [%]		84.8
Dist 3dB Peak [mm]		> 15.0

Measurement Results

	Area Scan	Zoom Scan
psSAR1g [W/Kg]	1.13	1.18
psSAR10g [W/Kg]	0.769	0.824
Power Drift [dB]	n/a	-0.04



Measurement Report for Band 30: LTE-FDD (SC-FDMA, 1 RB, 10 MHz, QPSK) RBPosition:High AntennaCfg:SISO, BACK

Exposure Conditions

Band	Band 30	TSL Permittivity	39.8
Frequency [MHz] Channel Number	2310.0 27710	TSL Conductivity [S/m]	1.62
Group UID	LTE-FDD 10175-CAH	Phantom Section TSL	Flat HSL
Conversion Factor	8.2	Test Distance [mm]	0.00

Hardware Setup

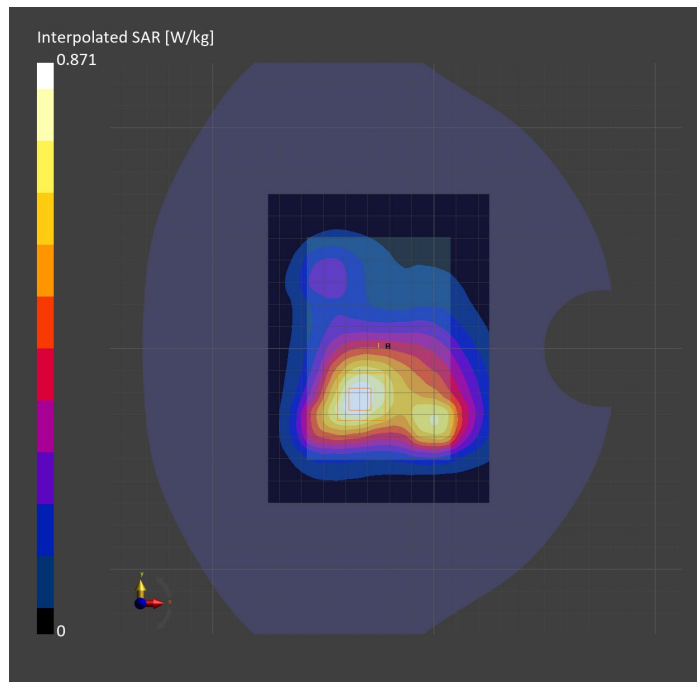
Probe Calibration Date	EX3DV4 - SN7356 2023-03-17	Phantom	Twin-SAM V5.0 (30deg probe tilt)
DAE Calibration Date	DAE4 Sn1544 2023-01-24	TSL Type	HBBL-600-10000
Software Version	16.2.0.1425		

Scan Setup

	Area Scan	Zoom Scan
Grid Extents [mm]	100.0 x 140.0	30.0 x 30.0 x 30.0
Grid Steps [mm]	10.0 x 10.0	5.0 x 5.0 x 1.5
Sensor Surface [mm]	3.0	1.4
Graded Grid	n/a	Yes
M2/M1 [%]		84.8
Dist 3dB Peak [mm]		17.1

Measurement Results

	Area Scan	Zoom Scan
psSAR1g [W/Kg]	0.508	0.526
psSAR10g [W/Kg]	0.287	0.308
Power Drift [dB]	n/a	-0.06



Measurement Report for Band 30: LTE-FDD (SC-FDMA, 1 RB, 10 MHz, QPSK) RBPosition:High AntennaCfg:SISO, BACK

Exposure Conditions

Band	Band 30	TSL Permittivity	37.7
Frequency [MHz] Channel Number	2310.0 27710	TSL Conductivity [S/m]	1.68
Group UID	LTE-FDD 10175-CAH	Phantom Section TSL	Flat HSL
Conversion Factor	8.06	Test Distance [mm]	0.00

Hardware Setup

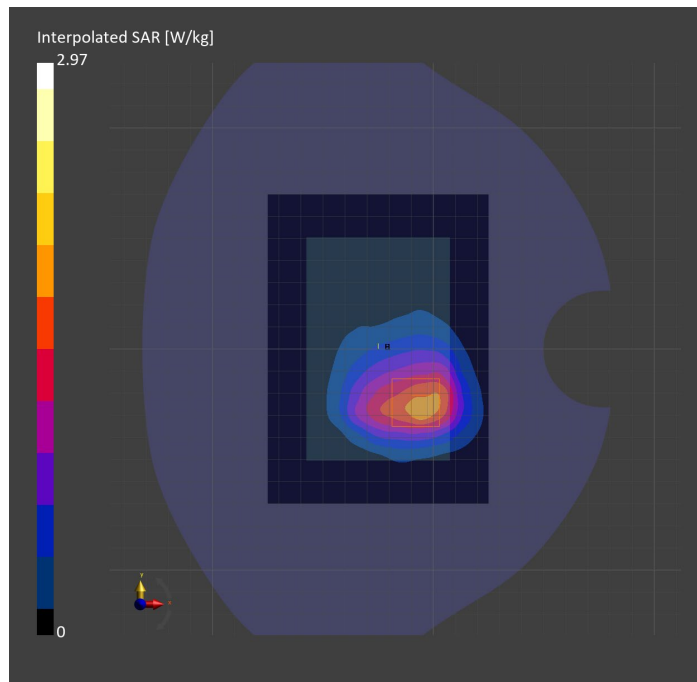
Probe Calibration Date	EX3DV4 - SN3989 2023-01-26	Phantom	Twin-SAM V5.0 (30deg probe tilt)
DAE Calibration Date	DAE4 Sn1544 2023-01-24	TSL Type	HBBL-600-10000
Software Version	16.2.0.1425		

Scan Setup

	Area Scan	Zoom Scan
Grid Extents [mm]	100.0 x 140.0	30.0 x 30.0 x 30.0
Grid Steps [mm]	10.0 x 10.0	5.0 x 5.0 x 1.5
Sensor Surface [mm]	3.0	1.4
Graded Grid	n/a	Yes
M2/M1 [%]		81.0
Dist 3dB Peak [mm]		12.1

Measurement Results

	Area Scan	Zoom Scan
psSAR1g [W/Kg]	1.55	1.58
psSAR10g [W/Kg]	0.849	0.861
Power Drift [dB]	n/a	0.05



Measurement Report for Band 66: LTE-FDD (SC-FDMA, 1 RB, 20 MHz, QPSK) RBPosition:Mid AntennaCfg:SISO, BACK

Exposure Conditions

Band	Band 66	TSL Permittivity	40.0
Frequency [MHz] Channel Number	1745.0 132322	TSL Conductivity [S/m]	1.38
Group UID	LTE-FDD 10169-CAF	Phantom Section TSL	Flat HSL
Conversion Factor	8.98	Test Distance [mm]	0.00

Hardware Setup

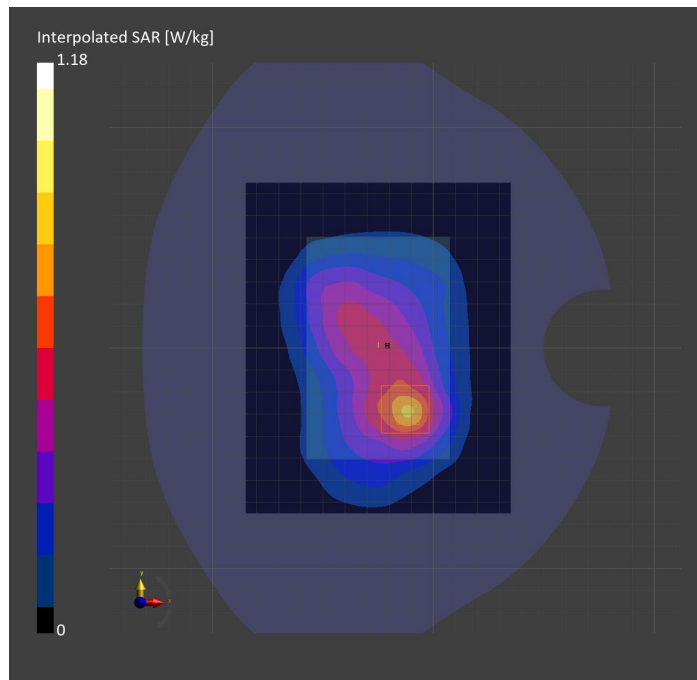
Probe Calibration Date	EX3DV4 - SN3989 2023-01-26	Phantom	Twin-SAM V5.0 (30deg probe tilt)
DAE Calibration Date	DAE4 Sn1544 2023-01-24	TSL Type	HBBL-600-10000
Software Version	16.2.0.1425		

Scan Setup

	Area Scan	Zoom Scan
Grid Extents [mm]	120.0 x 150.0	30.0 x 30.0 x 30.0
Grid Steps [mm]	15.0 x 15.0	6.0 x 6.0 x 1.5
Sensor Surface [mm]	3.0	1.4
Graded Grid	n/a	Yes
M2/M1 [%]		82.4
Dist 3dB Peak [mm]		14.4

Measurement Results

	Area Scan	Zoom Scan
psSAR1g [W/Kg]	0.653	0.693
psSAR10g [W/Kg]	0.374	0.413
Power Drift [dB]	n/a	-0.09



Measurement Report for Band 66: LTE-FDD (SC-FDMA, 1 RB, 20 MHz, QPSK) RBPosition:Mid AntennaCfg:SISO, EDGE BOTTOM

Exposure Conditions

Band	Band 66	TSL Permittivity	38.7
Frequency [MHz] Channel Number	1745.0 132322	TSL Conductivity [S/m]	1.34
Group UID	LTE-FDD 10169-CAF	Phantom Section TSL	Flat HSL
Conversion Factor	8.98	Test Distance [mm]	0.00

Hardware Setup

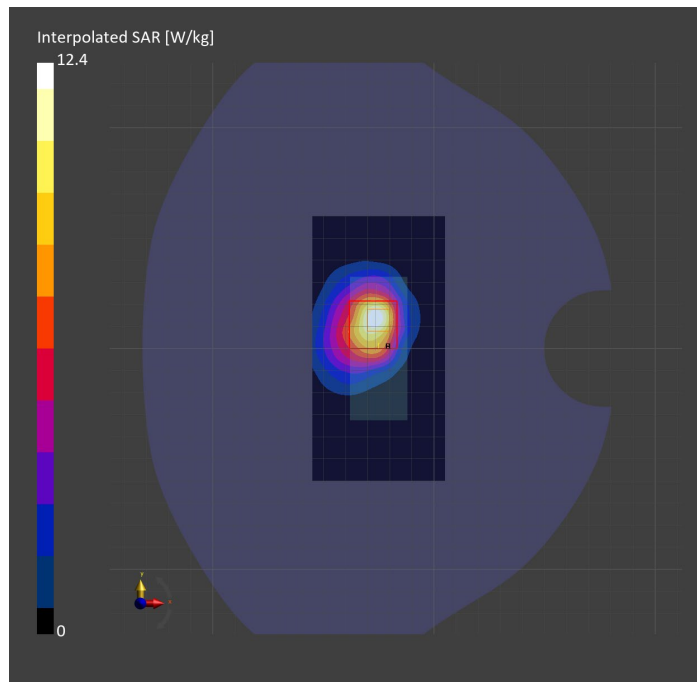
Probe Calibration Date	EX3DV4 - SN3989 2023-01-26	Phantom	Twin-SAM V5.0 (30deg probe tilt)
DAE Calibration Date	DAE4 Sn1544 2023-01-24	TSL Type	HBBL-600-10000
Software Version	16.2.0.1425		

Scan Setup

	Area Scan	Zoom Scan
Grid Extents [mm]	60.0 x 120.0	30.0 x 30.0 x 30.0
Grid Steps [mm]	15.0 x 15.0	6.0 x 6.0 x 1.5
Sensor Surface [mm]	3.0	1.4
Graded Grid	n/a	Yes
M2/M1 [%]		73.7
Dist 3dB Peak [mm]		7.6

Measurement Results

	Area Scan	Zoom Scan
psSAR1g [W/Kg]	6.07	5.51
psSAR10g [W/Kg]	3.14	2.77
Power Drift [dB]	n/a	0.00



Measurement Report for WLAN 2.4GHz: IEEE 802.11b WiFi 2.4 GHz (DSSS, 1 Mbps, 99pc duty cycle), BACK

Exposure Conditions

Band	WLAN 2.4GHz	TSL Permittivity	40.9
Frequency [MHz] Channel Number	2437.0 6	TSL Conductivity [S/m]	1.79
Group UID	WLAN 10415-AAA	Phantom Section TSL	Flat HSL
Conversion Factor	7.89	Test Distance [mm]	0.00

Hardware Setup

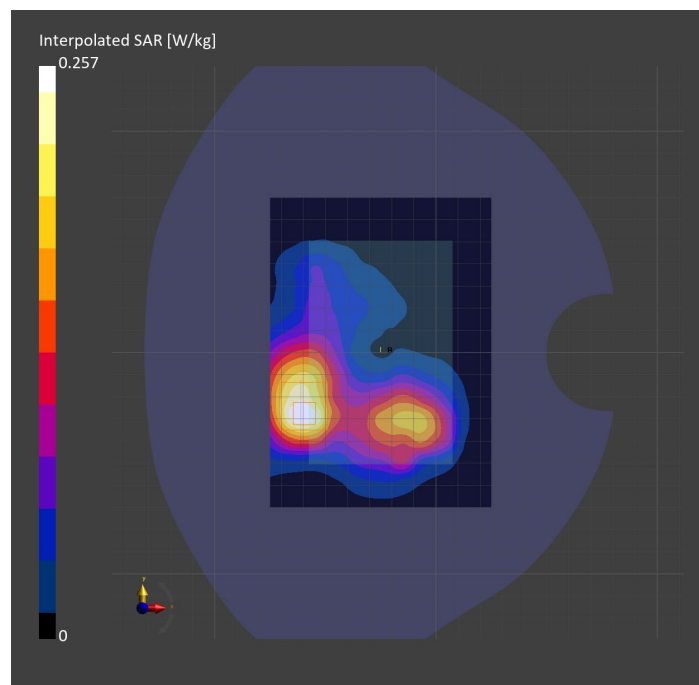
Probe Calibration Date	EX3DV4 - SN3989 2023-01-26	Phantom	Twin-SAM V5.0 (30deg probe tilt)
DAE Calibration Date	DAE4 Sn1544 2023-01-24	TSL Type	HBBL-600-10000
Software Version	16.2.0.1425		

Scan Setup

	Area Scan	Zoom Scan
Grid Extents [mm]	100.0 x 140.0	30.0 x 30.0 x 30.0
Grid Steps [mm]	10.0 x 10.0	5.0 x 5.0 x 1.5
Sensor Surface [mm]	3.0	1.4
Graded Grid	n/a	Yes
M2/M1 [%]		79.7
Dist 3dB Peak [mm]		12.6

Measurement Results

	Area Scan	Zoom Scan
psSAR1g [W/Kg]	0.126	0.132
psSAR10g [W/Kg]	0.068	0.069
Power Drift [dB]	n/a	0.02



Measurement Report for WLAN 2.4GHz: IEEE 802.11b WiFi 2.4 GHz (DSSS, 1 Mbps, 99pc duty cycle), EDGE RIGHT

Exposure Conditions

Band	WLAN 2.4GHz	TSL Permittivity	38.3
Frequency [MHz] Channel Number	2437.0 6	TSL Conductivity [S/m]	1.78
Group UID	WLAN 10415-AAA	Phantom Section TSL	Flat HSL
Conversion Factor	7.89	Test Distance [mm]	0.00

Hardware Setup

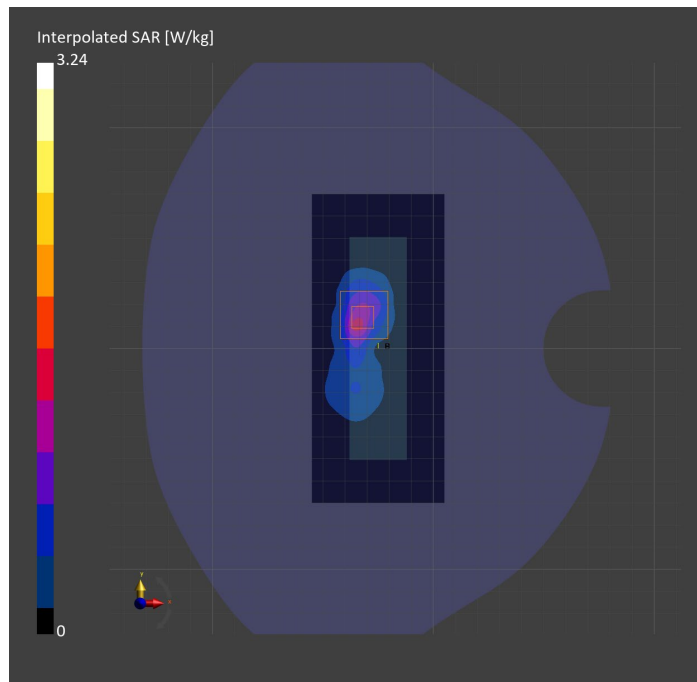
Probe Calibration Date	EX3DV4 - SN3989 2023-01-26	Phantom	Twin-SAM V5.0 (30deg probe tilt)
DAE Calibration Date	DAE4 Sn1544 2023-01-24	TSL Type	HBBL-600-10000
Software Version	16.2.0.1425		

Scan Setup

	Area Scan	Zoom Scan
Grid Extents [mm]	60.0 x 140.0	30.0 x 30.0 x 30.0
Grid Steps [mm]	10.0 x 10.0	4.4 x 4.4 x 1.5
Sensor Surface [mm]	3.0	1.4
Graded Grid	n/a	Yes
M2/M1 [%]		74.0
Dist 3dB Peak [mm]		5.6

Measurement Results

	Area Scan	Zoom Scan
psSAR1g [W/Kg]	1.04	1.13
psSAR10g [W/Kg]	0.448	0.434
Power Drift [dB]	n/a	0.01



Measurement Report for WLAN 5GHz: IEEE 802.11n (HT Greenfield, 13.5 Mbps, BPSK), BACK

Exposure Conditions

Band	WLAN 5GHz	TSL Permittivity	36.2
Frequency [MHz] Channel Number	5310.0 62	TSL Conductivity [S/m]	4.69
Group UID	WLAN 10114-CAD	Phantom Section TSL	Flat HSL
Conversion Factor	5.36	Test Distance [mm]	0.00

Hardware Setup

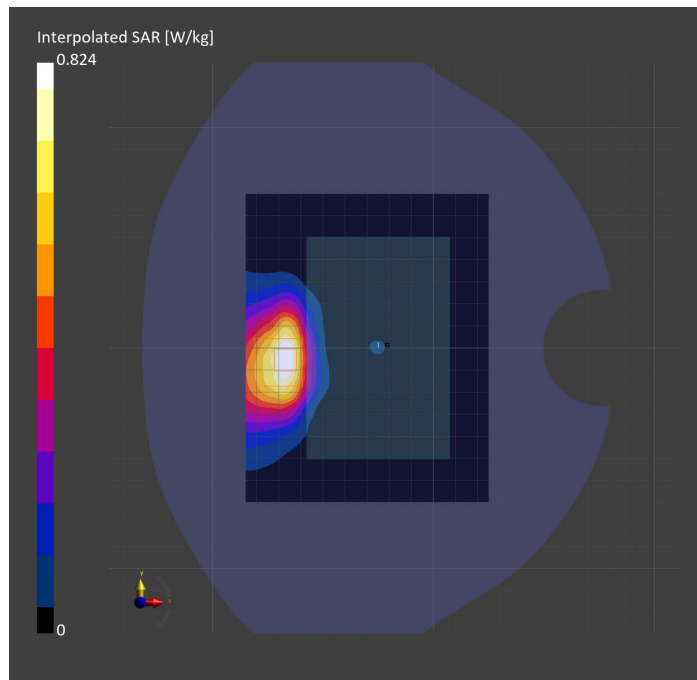
Probe Calibration Date	EX3DV4 - SN3989 2023-01-26	Phantom	Twin-SAM V5.0 (30deg probe tilt)
DAE Calibration Date	DAE4 Sn1544 2023-01-24	TSL Type	HBBL-600-10000
Software Version	16.2.0.1425		

Scan Setup

	Area Scan	Zoom Scan
Grid Extents [mm]	100.0 x 140.0	24.0 x 24.0 x 22.0
Grid Steps [mm]	10.0 x 10.0	4.0 x 4.0 x 1.4
Sensor Surface [mm]	3.0	1.4
Graded Grid	n/a	Yes
M2/M1 [%]		56.9
Dist 3dB Peak [mm]		6.4

Measurement Results

	Area Scan	Zoom Scan
psSAR1g [W/Kg]	0.223	0.223
psSAR10g [W/Kg]	0.093	0.091
Power Drift [dB]	n/a	0.17



Measurement Report for WLAN 5GHz: IEEE 802.11n (HT Greenfield, 13.5 Mbps, BPSK), EDGE RIGHT

Exposure Conditions

Band	WLAN 5GHz	TSL Permittivity	35.8
Frequency [MHz] Channel Number	5310.0 62	TSL Conductivity [S/m]	4.57
Group UID	WLAN 10114-CAD	Phantom Section TSL	Flat HSL
Conversion Factor	5.36	Test Distance [mm]	0.00

Hardware Setup

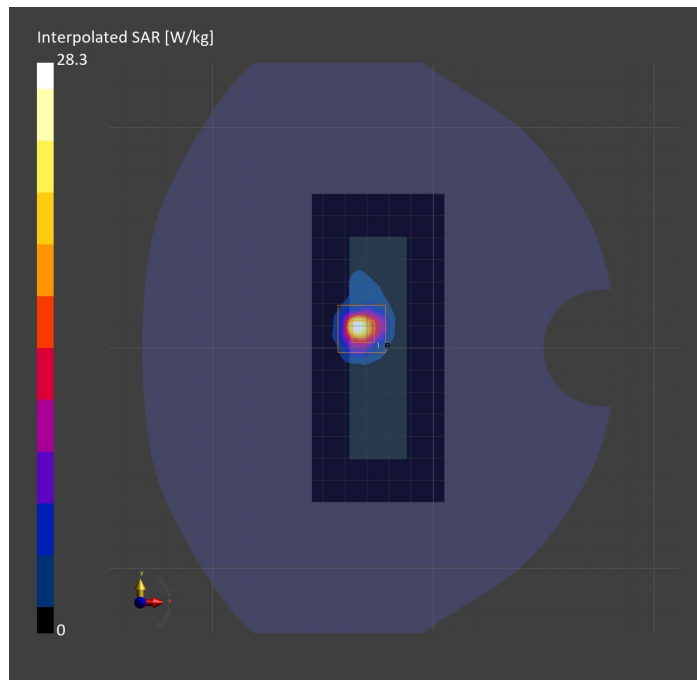
Probe Calibration Date	EX3DV4 - SN3989 2023-01-26	Phantom	Twin-SAM V5.0 (30deg probe tilt)
DAE Calibration Date	DAE4 Sn1544 2023-01-24	TSL Type	HBBL-600-10000
Software Version	16.2.0.1425		

Scan Setup

	Area Scan	Zoom Scan
Grid Extents [mm]	60.0 x 140.0	22.0 x 22.0 x 22.0
Grid Steps [mm]	10.0 x 10.0	4.0 x 4.0 x 1.4
Sensor Surface [mm]	3.0	1.4
Graded Grid	n/a	Yes
M2/M1 [%]		65.7
Dist 3dB Peak [mm]		4.7

Measurement Results

	Area Scan	Zoom Scan
psSAR1g [W/Kg]	4.22	6.27
psSAR10g [W/Kg]	1.11	1.35
Power Drift [dB]	n/a	0.02



Measurement Report for WLAN 5GHz: IEEE 802.11a/h WiFi 5 GHz (OFDM, 6 Mbps, 99pc duty cycle), BACK

Exposure Conditions

Band	WLAN 5GHz	TSL Permittivity	35.1
Frequency [MHz] Channel Number	5720.0 144	TSL Conductivity [S/m]	5.02
Group UID	WLAN 10417-AAC	Phantom Section TSL	Flat HSL
Conversion Factor	5.02	Test Distance [mm]	0.00

Hardware Setup

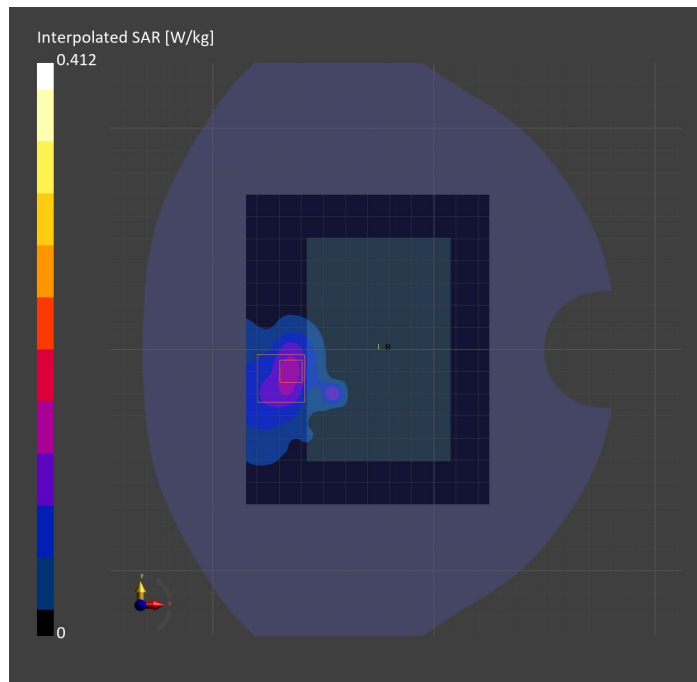
Probe Calibration Date	EX3DV4 - SN3989 2023-01-26	Phantom	Twin-SAM V5.0 (30deg probe tilt)
DAE Calibration Date	DAE4 Sn1544 2023-01-24	TSL Type	HBBL-600-10000
Software Version	16.2.0.1425		

Scan Setup

	Area Scan	Zoom Scan
Grid Extents [mm]	100.0 x 140.0	24.0 x 24.0 x 22.0
Grid Steps [mm]	10.0 x 10.0	4.0 x 4.0 x 1.4
Sensor Surface [mm]	3.0	1.4
Graded Grid	n/a	Yes
M2/M1 [%]		60.2
Dist 3dB Peak [mm]		8.7

Measurement Results

	Area Scan	Zoom Scan
psSAR1g [W/Kg]	0.119	0.111
psSAR10g [W/Kg]	0.046	0.041
Power Drift [dB]	n/a	0.10



Measurement Report for WLAN 5GHz: IEEE 802.11a/h WiFi 5 GHz (OFDM, 6 Mbps, 99pc duty cycle), EDGE RIGHT

Exposure Conditions

Band	WLAN 5GHz	TSL Permittivity	35.1
Frequency [MHz] Channel Number	5720.0 144	TSL Conductivity [S/m]	5.02
Group UID	WLAN 10417-AAC	Phantom Section TSL	Flat HSL
Conversion Factor	5.02	Test Distance [mm]	0.00

Hardware Setup

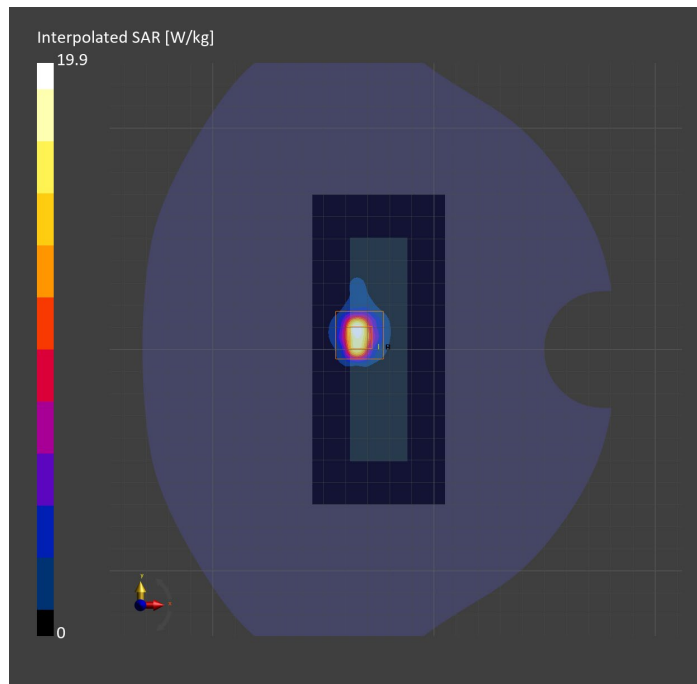
Probe Calibration Date	EX3DV4 - SN3989 2023-01-26	Phantom	Twin-SAM V5.0 (30deg probe tilt)
DAE Calibration Date	DAE4 Sn1544 2023-01-24	TSL Type	HBBL-600-10000
Software Version	16.2.0.1425		

Scan Setup

	Area Scan	Zoom Scan
Grid Extents [mm]	60.0 x 140.0	24.0 x 24.0 x 22.0
Grid Steps [mm]	10.0 x 10.0	4.0 x 4.0 x 1.4
Sensor Surface [mm]	3.0	1.4
Graded Grid	n/a	Yes
M2/M1 [%]		61.5
Dist 3dB Peak [mm]		4.8

Measurement Results

	Area Scan	Zoom Scan
psSAR1g [W/Kg]	3.45	4.18
psSAR10g [W/Kg]	0.877	0.909
Power Drift [dB]	n/a	0.12



Measurement Report for U-NII-3 Standalone: IEEE 802.11n (HT Greenfield, 13.5 Mbps, BPSK), BACK

Exposure Conditions

Band	U-NII-3 Standalone	TSL Permittivity	35.4
Frequency [MHz] Channel Number	5755.0 151	TSL Conductivity [S/m]	5.18
Group UID	WLAN 10114-CAD	Phantom Section TSL	Flat HSL
Conversion Factor	5.02	Test Distance [mm]	0.00

Hardware Setup

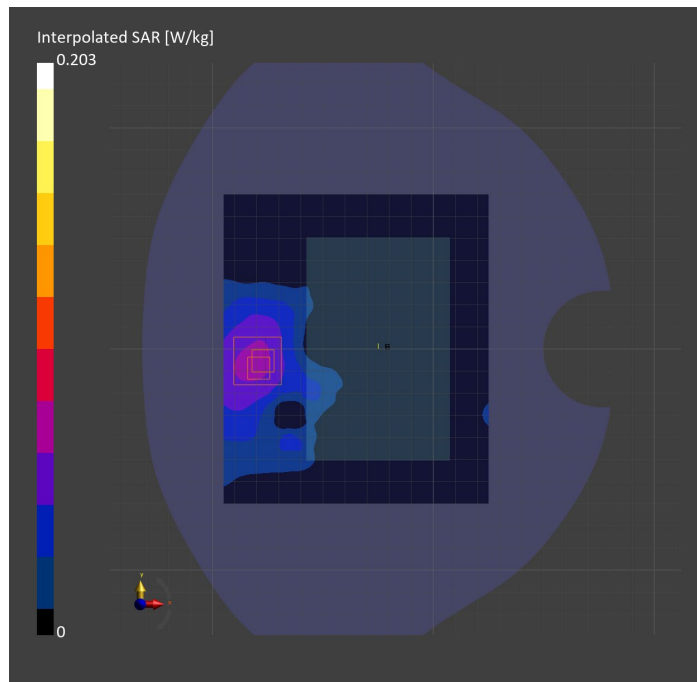
Probe Calibration Date	EX3DV4 - SN3989 2023-01-26	Phantom	Twin-SAM V5.0 (30deg probe tilt)
DAE Calibration Date	DAE4 Sn1544 2023-01-24	TSL Type	HBBL-600-10000
Software Version	16.2.0.1425		

Scan Setup

	Area Scan	Zoom Scan	Secondary Zoom Scan
Grid Extents [mm]	100.0 x 140.0	24.0 x 24.0 x 22.0	24.0 x 24.0 x 22.0
Grid Steps [mm]	10.0 x 10.0	4.0 x 4.0 x 1.4	4.0 x 4.0 x 1.4
Sensor Surface [mm]	3.0	1.4	1.4
Graded Grid	n/a	Yes	Yes
M2/M1 [%]		66.5	65.5
Dist 3dB Peak [mm]		> 12.0	> 12.0

Measurement Results

	Area Scan	Zoom Scan	Secondary Zoom Scan
psSAR1g [W/Kg]	0.057	0.063	0.058
psSAR10g [W/Kg]	0.025	0.029	0.025
Power Drift [dB]	n/a	0.42	-0.80



Measurement Report for U-NII-3 Standalone: IEEE 802.11n (HT Greenfield, 13.5 Mbps, BPSK), EDGE RIGHT

Exposure Conditions

Band	U-NII-3 Standalone	TSL Permittivity	35.4
Frequency [MHz] Channel Number	5755.0 151	TSL Conductivity [S/m]	5.18
Group UID	WLAN 10114-CAD	Phantom Section TSL	Flat HSL
Conversion Factor	5.02	Test Distance [mm]	0.00

Hardware Setup

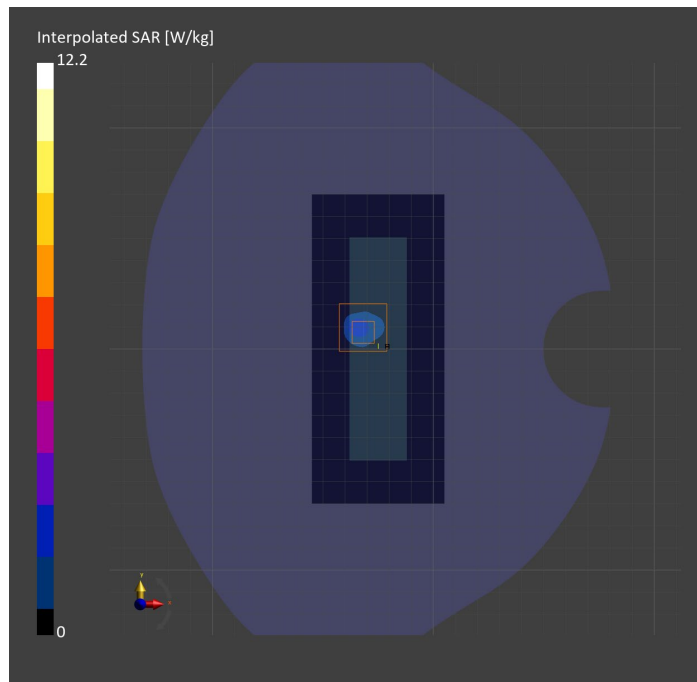
Probe Calibration Date	EX3DV4 - SN3989 2023-01-26	Phantom	Twin-SAM V5.0 (30deg probe tilt)
DAE Calibration Date	DAE4 Sn1544 2023-01-24	TSL Type	HBBL-600-10000
Software Version	16.2.0.1425		

Scan Setup

	Area Scan	Zoom Scan
Grid Extents [mm]	60.0 x 140.0	24.0 x 24.0 x 22.0
Grid Steps [mm]	10.0 x 10.0	4.0 x 4.0 x 1.4
Sensor Surface [mm]	3.0	1.4
Graded Grid	n/a	Yes
M2/M1 [%]		60.7
Dist 3dB Peak [mm]		4.8

Measurement Results

	Area Scan	Zoom Scan
psSAR1g [W/Kg]	1.72	2.56
psSAR10g [W/Kg]	0.447	0.567
Power Drift [dB]	n/a	0.03



Measurement Report for ISM 2.4 GHz Band: IEEE 802.15.1 Bluetooth (GFSK, DH5), BACK

Exposure Conditions

Band	ISM 2.4 GHz Band	TSL Permittivity	38.2
Frequency [MHz] Channel Number	2480.0 78	TSL Conductivity [S/m]	1.81
Group UID	Bluetooth 10032-CAA	Phantom Section TSL	Flat HSL
Conversion Factor	7.89	Test Distance [mm]	0.00

Hardware Setup

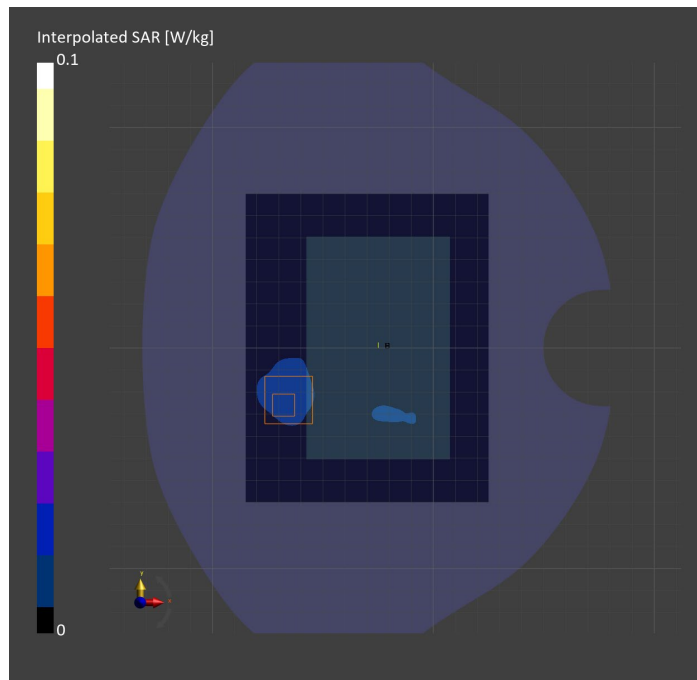
Probe Calibration Date	EX3DV4 - SN3989 2023-01-26	Phantom	Twin-SAM V5.0 (30deg probe tilt)
DAE Calibration Date	DAE4 Sn1544 2023-01-24	TSL Type	HBBL-600-10000
Software Version	16.2.0.1425		

Scan Setup

	Area Scan	Zoom Scan
Grid Extents [mm]	100.0 x 140.0	30.0 x 30.0 x 30.0
Grid Steps [mm]	10.0 x 10.0	5.0 x 5.0 x 1.5
Sensor Surface [mm]	3.0	1.4
Graded Grid	n/a	Yes
M2/M1 [%]		25.2
Dist 3dB Peak [mm]		7.3

Measurement Results

	Area Scan	Zoom Scan
psSAR1g [W/Kg]	0.011	0.012
psSAR10g [W/Kg]	0.006	0.006
Power Drift [dB]	n/a	0.01



Measurement Report for ISM 2.4 GHz Band: IEEE 802.15.1 Bluetooth (GFSK, DH5), EDGE RIGHT

Exposure Conditions

Band	ISM 2.4 GHz Band	TSL Permittivity	38.2
Frequency [MHz] Channel Number	2480.0 78	TSL Conductivity [S/m]	1.81
Group UID	Bluetooth 10032-CAA	Phantom Section TSL	Flat HSL
Conversion Factor	7.89	Test Distance [mm]	0.00

Hardware Setup

Probe Calibration Date	EX3DV4 - SN3989 2023-01-26	Phantom	Twin-SAM V5.0 (30deg probe tilt)
DAE Calibration Date	DAE4 Sn1544 2023-01-24	TSL Type	HBBL-600-10000
Software Version	16.2.0.1425		

Scan Setup

	Area Scan	Zoom Scan
Grid Extents [mm]	60.0 x 140.0	30.0 x 30.0 x 30.0
Grid Steps [mm]	10.0 x 10.0	4.5 x 4.5 x 1.5
Sensor Surface [mm]	3.0	1.4
Graded Grid	n/a	Yes
M2/M1 [%]		73.2
Dist 3dB Peak [mm]		5.7

Measurement Results

	Area Scan	Zoom Scan
psSAR1g [W/Kg]	0.164	0.178
psSAR10g [W/Kg]	0.068	0.067
Power Drift [dB]	n/a	0.00

