

# System Performance Check Report for D2450V2 - SN899

## Exposure Conditions

Frequency [MHz]   Channel Number	2450.0   0	TSL Permittivity	40.8
Group   UID	CW   0--	TSL Conductivity [S/m]	1.80
Conversion Factor	7.89	Phantom Section   TSL	Flat   HSL

## Hardware Setup

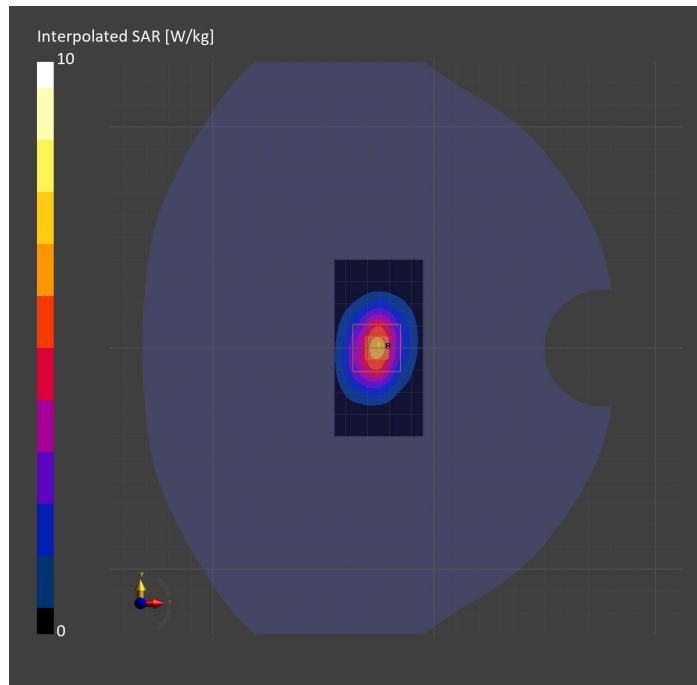
Probe   Calibration Date	EX3DV4 - SN3989   2023-01-26	Phantom	Twin-SAM V5.0 (30deg probe tilt)
DAE   Calibration Date	DAE4 Sn1544   2023-01-24	TSL Type	HBBL-600-10000
Software Version	16.2.0.1425		

## Scans Setup

	Area Scan	Zoom Scan
Grid Extents [mm]	40.0 x 80.0	30.0 x 30.0 x 30.0
Grid Steps [mm]	10.0 x 10.0	5.0 x 5.0 x 1.5
Sensor Surface [mm]	3.0	1.4
Graded Grid	n/a	Yes
M2/M1 [%]		80.2
Dist 3dB Peak [mm]		9.0

## Measurement Results

	Area Scan	Zoom Scan
psSAR1g [W/Kg]	4.88	<b>4.91</b>
psSAR10g [W/Kg]	2.28	<b>2.31</b>
Power Drift [dB]	n/a	-0.00



# System Performance Check Report for D750V3 - SN1071

## Exposure Conditions

Frequency [MHz]   Channel Number	750.0   0	TSL Permittivity	43.9
Group   UID	CW   0--	TSL Conductivity [S/m]	0.909
Conversion Factor	10.22	Phantom Section   TSL	Flat   HSL

## Hardware Setup

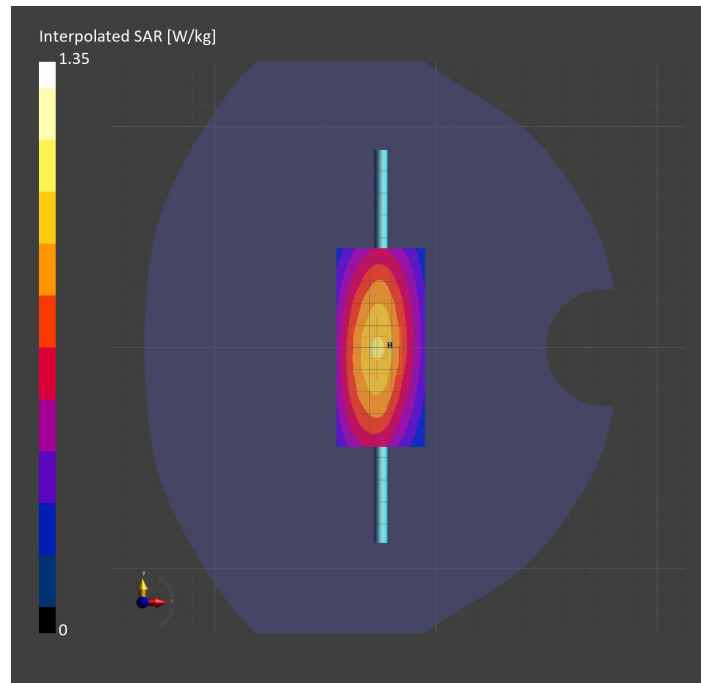
Probe   Calibration Date	EX3DV4 - SN3989   2023-01-26	Phantom	Twin-SAM V5.0 (30deg probe tilt)
DAE   Calibration Date	DAE4 Sn1544   2023-01-24	TSL Type	HBBL-600-10000
Software Version	16.2.0.1425		

## Scans Setup

	Area Scan	Zoom Scan
Grid Extents [mm]	40.0 x 90.0	30.0 x 30.0 x 30.0
Grid Steps [mm]	10.0 x 15.0	6.0 x 6.0 x 1.5
Sensor Surface [mm]	3.0	1.4
Graded Grid	n/a	Yes
M2/M1 [%]		87.5
Dist 3dB Peak [mm]		19.7

## Measurement Results

	Area Scan	Zoom Scan
psSAR1g [W/Kg]	0.894	<b>0.894</b>
psSAR10g [W/Kg]	0.596	<b>0.595</b>
Power Drift [dB]	n/a	-0.02



# System Performance Check Report for D835V2 - SN4d002

## Exposure Conditions

Frequency [MHz]   Channel Number	835.0   0	TSL Permittivity	43.2
Group   UID	CW   0--	TSL Conductivity [S/m]	0.940
Conversion Factor	9.57	Phantom Section   TSL	Flat   HSL

## Hardware Setup

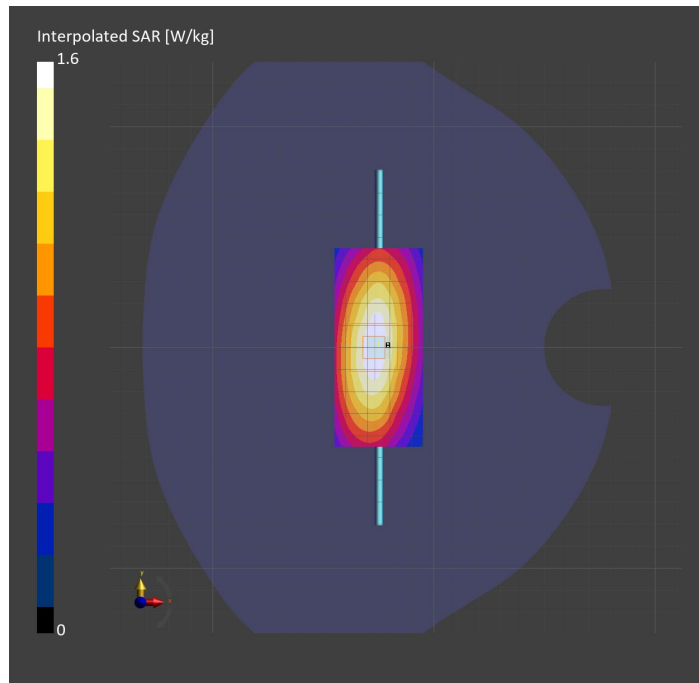
Probe   Calibration Date	EX3DV4 - SN3989   2023-01-26	Phantom	Twin-SAM V5.0 (30deg probe tilt)
DAE   Calibration Date	DAE4 Sn1544   2023-01-24	TSL Type	HBBL-600-10000
Software Version	16.2.0.1425		

## Scans Setup

	Area Scan	Zoom Scan
Grid Extents [mm]	40.0 x 90.0	30.0 x 30.0 x 30.0
Grid Steps [mm]	10.0 x 15.0	6.0 x 6.0 x 1.5
Sensor Surface [mm]	3.0	1.4
Graded Grid	n/a	Yes
M2/M1 [%]		88.0
Dist 3dB Peak [mm]		16.1

## Measurement Results

	Area Scan	Zoom Scan
psSAR1g [W/Kg]	1.07	<b>1.07</b>
psSAR10g [W/Kg]	0.702	<b>0.706</b>
Power Drift [dB]	n/a	0.00



# System Performance Check Report for D1900V2 - SN5d140

## Exposure Conditions

Frequency [MHz]   Channel Number	1900.0   0	TSL Permittivity	40.5
Group   UID	CW   0--	TSL Conductivity [S/m]	1.45
Conversion Factor	8.46	Phantom Section   TSL	Flat   HSL

## Hardware Setup

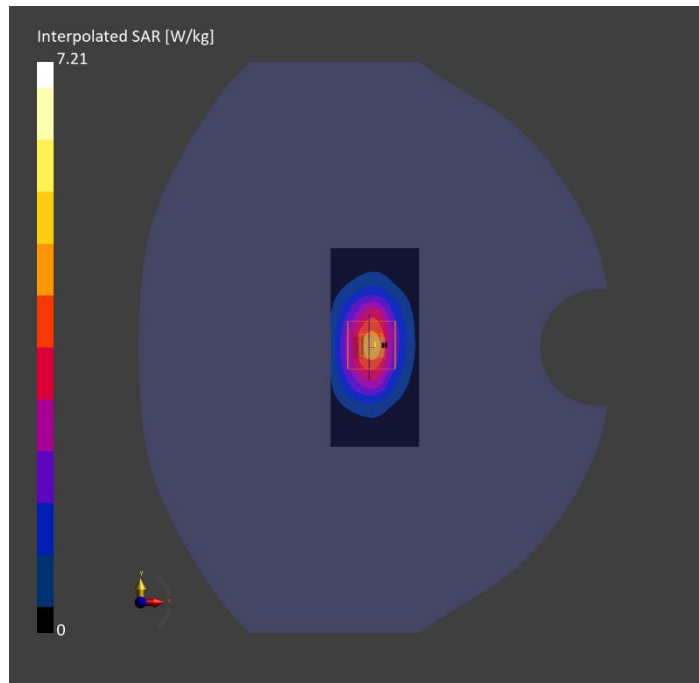
Probe   Calibration Date	EX3DV4 - SN3989   2023-01-26	Phantom	Twin-SAM V5.0 (30deg probe tilt)
DAE   Calibration Date	DAE4 Sn1544   2023-01-24	TSL Type	HBBL-600-10000
Software Version	16.2.0.1425		

## Scans Setup

	Area Scan	Zoom Scan
Grid Extents [mm]	40.0 x 90.0	30.0 x 30.0 x 30.0
Grid Steps [mm]	10.0 x 15.0	6.0 x 6.0 x 1.5
Sensor Surface [mm]	3.0	1.4
Graded Grid	n/a	Yes
M2/M1 [%]		82.2
Dist 3dB Peak [mm]		9.6

## Measurement Results

	Area Scan	Zoom Scan
psSAR1g [W/Kg]	3.71	<b>3.83</b>
psSAR10g [W/Kg]	1.93	<b>1.99</b>
Power Drift [dB]	n/a	-0.00



# System Performance Check Report for D2300V2 - SN1002

## Exposure Conditions

Frequency [MHz]   Channel Number	2300.0   0	TSL Permittivity	37.8
Group   UID	CW   0--	TSL Conductivity [S/m]	1.67
Conversion Factor	8.06	Phantom Section   TSL	Flat   HSL

## Hardware Setup

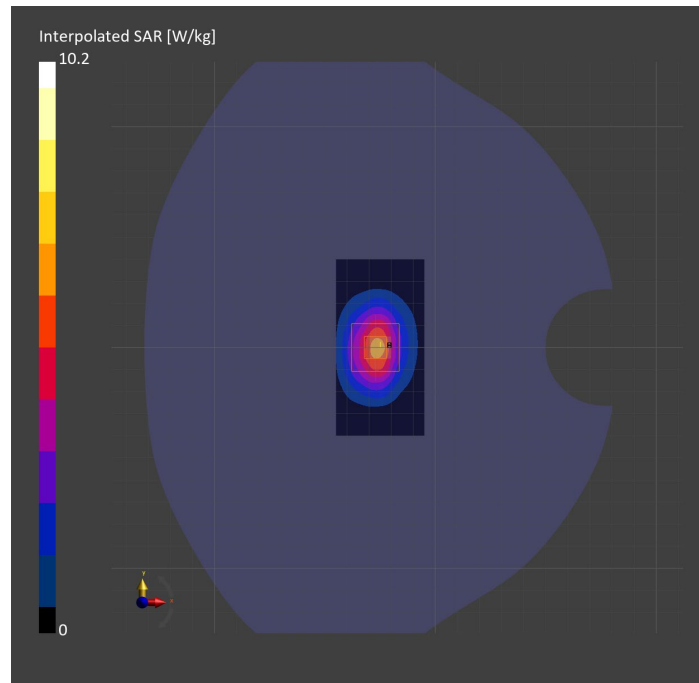
Probe   Calibration Date	EX3DV4 - SN3989   2023-01-26	Phantom	Twin-SAM V5.0 (30deg probe tilt)
DAE   Calibration Date	DAE4 Sn1544   2023-01-24	TSL Type	HBBL-600-10000
Software Version	16.2.0.1425		

## Scans Setup

	Area Scan	Zoom Scan
Grid Extents [mm]	40.0 x 80.0	30.0 x 30.0 x 30.0
Grid Steps [mm]	10.0 x 10.0	5.0 x 5.0 x 1.5
Sensor Surface [mm]	3.0	1.4
Graded Grid	n/a	Yes
M2/M1 [%]		79.8
Dist 3dB Peak [mm]		9.1

## Measurement Results

	Area Scan	Zoom Scan
psSAR1g [W/Kg]	4.95	5.00
psSAR10g [W/Kg]	2.38	2.40
Power Drift [dB]	n/a	0.01



# System Performance Check Report for D2600V2 - SN1036

## Exposure Conditions

Frequency [MHz]   Channel Number	2600.0   0	TSL Permittivity	37.2
Group   UID	CW   0--	TSL Conductivity [S/m]	1.90
Conversion Factor	7.82	Phantom Section   TSL	Flat   HSL

## Hardware Setup

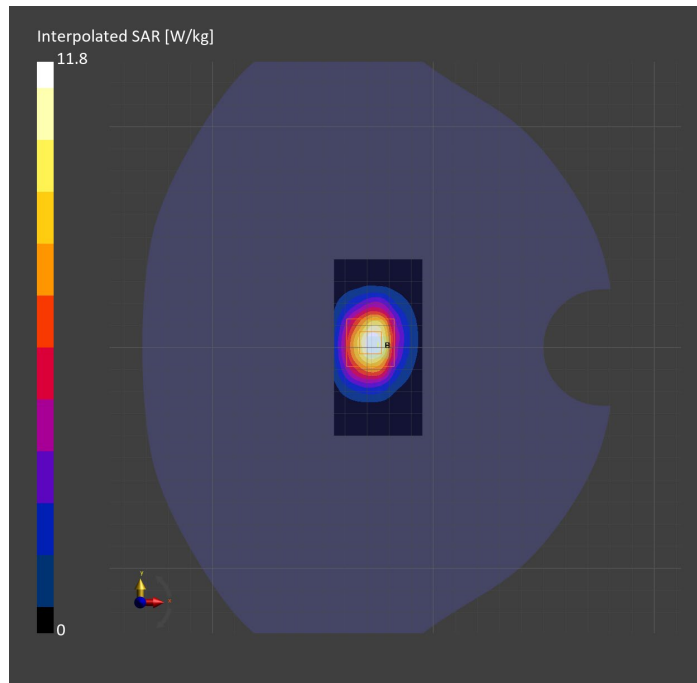
Probe   Calibration Date	EX3DV4 - SN3989   2023-01-26	Phantom	Twin-SAM V5.0 (30deg probe tilt)
DAE   Calibration Date	DAE4 Sn1544   2023-01-24	TSL Type	HBBL-600-10000
Software Version	16.2.0.1425		

## Scans Setup

	Area Scan	Zoom Scan
Grid Extents [mm]	40.0 x 80.0	30.0 x 30.0 x 30.0
Grid Steps [mm]	10.0 x 10.0	5.0 x 5.0 x 1.5
Sensor Surface [mm]	3.0	1.4
Graded Grid	n/a	Yes
M2/M1 [%]		78.6
Dist 3dB Peak [mm]		9.0

## Measurement Results

	Area Scan	Zoom Scan
psSAR1g [W/Kg]	5.34	<b>5.50</b>
psSAR10g [W/Kg]	2.47	<b>2.48</b>
Power Drift [dB]	n/a	0.02



# System Performance Check Report for D5GHzV2 - SN1168

## Exposure Conditions

Frequency [MHz]   Channel Number	5250.0   0	TSL Permittivity	36.4
Group   UID	CW   0--	TSL Conductivity [S/m]	4.62
Conversion Factor	5.36	Phantom Section   TSL	Flat   HSL

## Hardware Setup

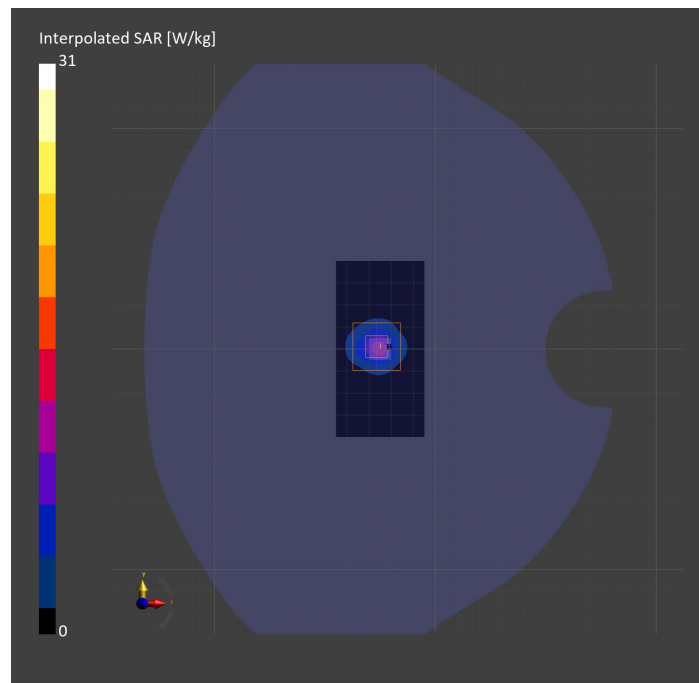
Probe   Calibration Date	EX3DV4 - SN3989   2023-01-26	Phantom	Twin-SAM V5.0 (30deg probe tilt)
DAE   Calibration Date	DAE4 Sn1544   2023-01-24	TSL Type	HBBL-600-10000
Software Version	16.2.0.1425		

## Scans Setup

	Area Scan	Zoom Scan
Grid Extents [mm]	40.0 x 80.0	22.0 x 22.0 x 22.0
Grid Steps [mm]	10.0 x 10.0	4.0 x 4.0 x 1.4
Sensor Surface [mm]	3.0	1.4
Graded Grid	n/a	Yes
M2/M1 [%]		64.7
Dist 3dB Peak [mm]		7.4

## Measurement Results

	Area Scan	Zoom Scan
psSAR1g [W/Kg]	7.50	8.11
psSAR10g [W/Kg]	2.20	2.37
Power Drift [dB]	n/a	0.08



# System Performance Check Report for D5GHzV2 - SN1168

## Exposure Conditions

Frequency [MHz]   Channel Number	5750.0   0	TSL Permittivity	35.4
Group   UID	CW   0--	TSL Conductivity [S/m]	5.18
Conversion Factor	5.02	Phantom Section   TSL	Flat   HSL

## Hardware Setup

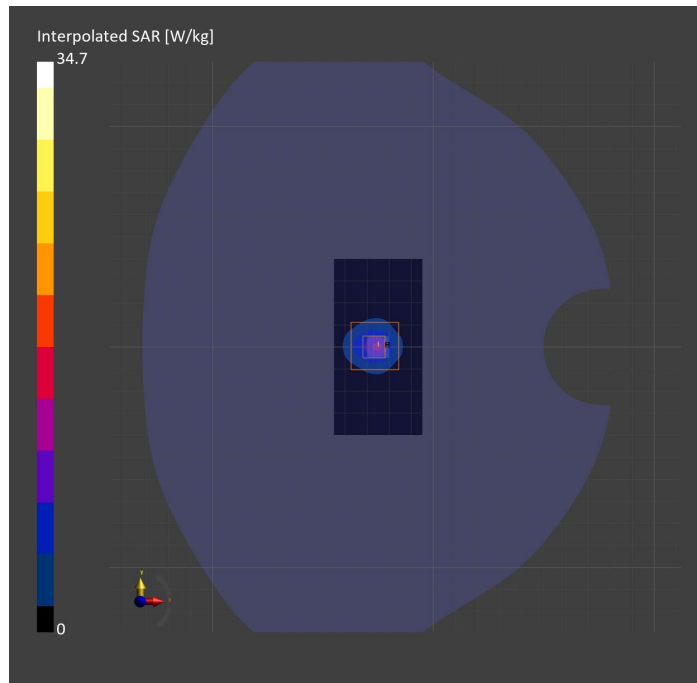
Probe   Calibration Date	EX3DV4 - SN3989   2023-01-26	Phantom	Twin-SAM V5.0 (30deg probe tilt)
DAE   Calibration Date	DAE4 Sn1544   2023-01-24	TSL Type	HBBL-600-10000
Software Version	16.2.0.1425		

## Scans Setup

	Area Scan	Zoom Scan
Grid Extents [mm]	40.0 x 80.0	22.0 x 22.0 x 22.0
Grid Steps [mm]	10.0 x 10.0	4.0 x 4.0 x 1.4
Sensor Surface [mm]	3.0	1.4
Graded Grid	n/a	Yes
M2/M1 [%]		62.1
Dist 3dB Peak [mm]		7.6

## Measurement Results

	Area Scan	Zoom Scan
psSAR1g [W/Kg]	7.78	8.41
psSAR10g [W/Kg]	2.27	2.43
Power Drift [dB]	n/a	0.03





# System Performance Check Report for D1750V2 - SN1050

## Exposure Conditions

Frequency [MHz]   Channel Number	1750.0   0	TSL Permittivity	39.6
Group   UID	CW   0--	TSL Conductivity [S/m]	1.31
Conversion Factor	8.98	Phantom Section   TSL	Flat   HSL

## Hardware Setup

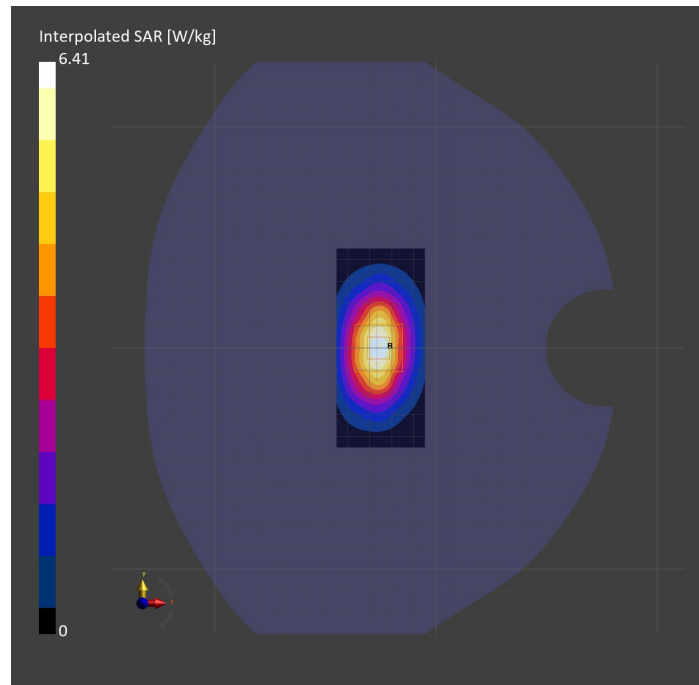
Probe   Calibration Date	EX3DV4 - SN3989   2023-01-26	Phantom	Twin-SAM V5.0 (30deg probe tilt)
DAE   Calibration Date	DAE4 Sn1544   2023-01-24	TSL Type	HBBL-600-10000
Software Version	16.2.0.1425		

## Scans Setup

	Area Scan	Zoom Scan
Grid Extents [mm]	40.0 x 90.0	30.0 x 30.0 x 30.0
Grid Steps [mm]	10.0 x 15.0	6.0 x 6.0 x 1.5
Sensor Surface [mm]	3.0	1.4
Graded Grid	n/a	Yes
M2/M1 [%]		81.7
Dist 3dB Peak [mm]		10.8

## Measurement Results

	Area Scan	Zoom Scan
psSAR1g [W/Kg]	3.43	<b>3.45</b>
psSAR10g [W/Kg]	1.84	<b>1.85</b>
Power Drift [dB]	n/a	0.00



# System Performance Check Report for D5GHzV2 - SN1168

## Exposure Conditions

Frequency [MHz]   Channel Number	5600.0   0	TSL Permittivity	35.3
Group   UID	CW   0--	TSL Conductivity [S/m]	4.88
Conversion Factor	4.8	Phantom Section   TSL	Flat   HSL

## Hardware Setup

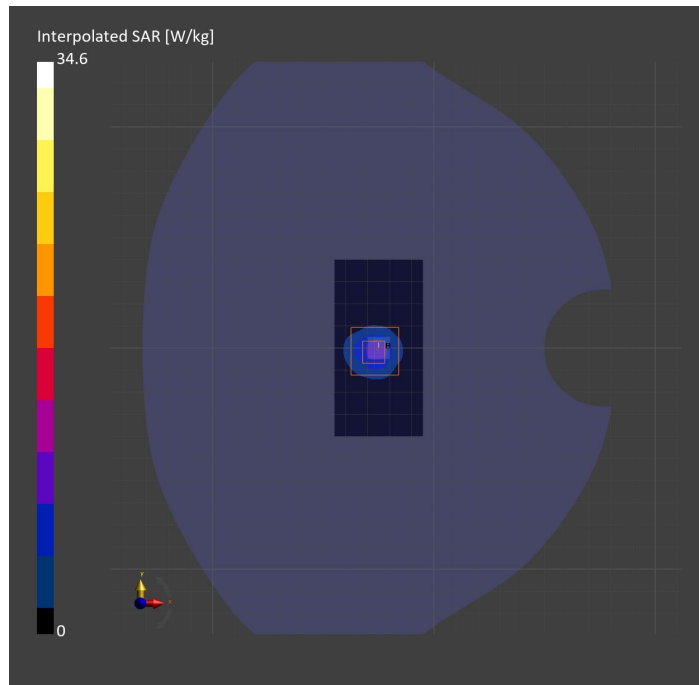
Probe   Calibration Date	EX3DV4 - SN3989   2023-01-26	Phantom	Twin-SAM V5.0 (30deg probe tilt)
DAE   Calibration Date	DAE4 Sn1544   2023-01-24	TSL Type	HBBL-600-10000
Software Version	16.2.0.1425		

## Scans Setup

	Area Scan	Zoom Scan
Grid Extents [mm]	40.0 x 80.0	22.0 x 22.0 x 22.0
Grid Steps [mm]	10.0 x 10.0	4.0 x 4.0 x 1.4
Sensor Surface [mm]	3.0	1.4
Graded Grid	n/a	Yes
M2/M1 [%]		61.3
Dist 3dB Peak [mm]		7.9

## Measurement Results

	Area Scan	Zoom Scan
psSAR1g [W/Kg]	7.54	8.39
psSAR10g [W/Kg]	2.25	2.46
Power Drift [dB]	n/a	0.01



# System Performance Check Report for D2300V2 - SN1058

## Exposure Conditions

Frequency [MHz]   Channel Number	2300.0   0	TSL Permittivity	39.8
Group   UID	CW   0--	TSL Conductivity [S/m]	1.61
Conversion Factor	8.2	Phantom Section   TSL	Flat   HSL

## Hardware Setup

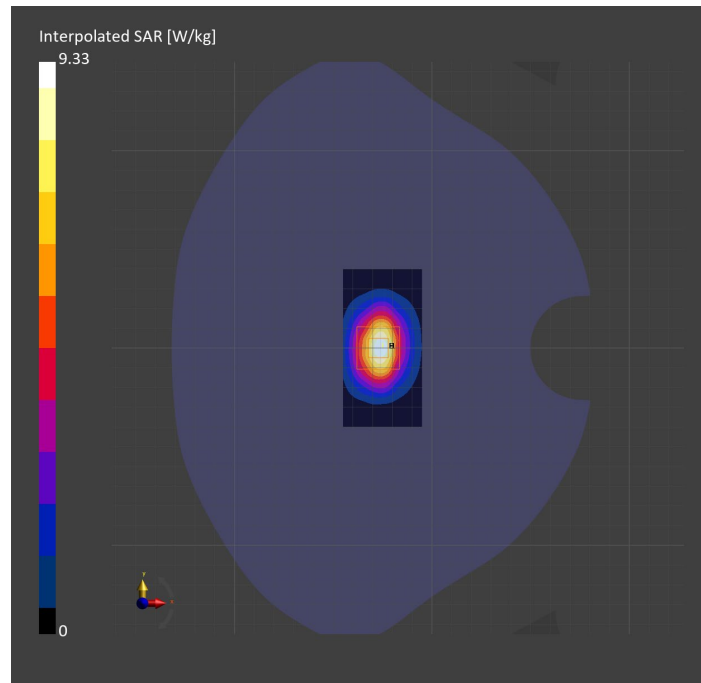
Probe   Calibration Date	EX3DV4 - SN7356   2023-03-17	Phantom	Twin-SAM V5.0 (30deg probe tilt)
DAE   Calibration Date	DAE4 Sn1544   2023-01-24	TSL Type	HBBL-600-10000
Software Version	16.2.0.1425		

## Scans Setup

	Area Scan	Zoom Scan
Grid Extents [mm]	40.0 x 80.0	30.0 x 30.0 x 30.0
Grid Steps [mm]	10.0 x 10.0	5.0 x 5.0 x 1.5
Sensor Surface [mm]	3.0	1.4
Graded Grid	n/a	Yes
M2/M1 [%]		81.9
Dist 3dB Peak [mm]		9.0

## Measurement Results

	Area Scan	Zoom Scan
psSAR1g [W/Kg]	4.76	<b>4.78</b>
psSAR10g [W/Kg]	2.29	<b>2.32</b>
Power Drift [dB]	n/a	-0.00



# System Performance Check Report for D2600V2 - SN1006

## Exposure Conditions

Frequency [MHz]   Channel Number	2600.0   0	TSL Permittivity	40.0
Group   UID	CW   0--	TSL Conductivity [S/m]	1.92
Conversion Factor	8.02	Phantom Section   TSL	Flat   HSL

## Hardware Setup

Probe   Calibration Date	EX3DV4 - SN7356   2023-03-17	Phantom	Twin-SAM V5.0 (30deg probe tilt)
DAE   Calibration Date	DAE4 Sn1544   2023-01-24	TSL Type	HBBL-600-10000
Software Version	16.2.0.1425		

## Scans Setup

	Area Scan	Zoom Scan
Grid Extents [mm]	40.0 x 80.0	30.0 x 30.0 x 30.0
Grid Steps [mm]	10.0 x 10.0	5.0 x 5.0 x 1.5
Sensor Surface [mm]	3.0	1.4
Graded Grid	n/a	Yes
M2/M1 [%]		79.8
Dist 3dB Peak [mm]		9.1

## Measurement Results

	Area Scan	Zoom Scan
psSAR1g [W/Kg]	5.50	<b>5.57</b>
psSAR10g [W/Kg]	2.48	<b>2.55</b>
Power Drift [dB]	n/a	-0.01

