

Measurement report:

Dual band Wifi/BT antenna (Ant5)

NA Antenna midframe model number: S01555-1

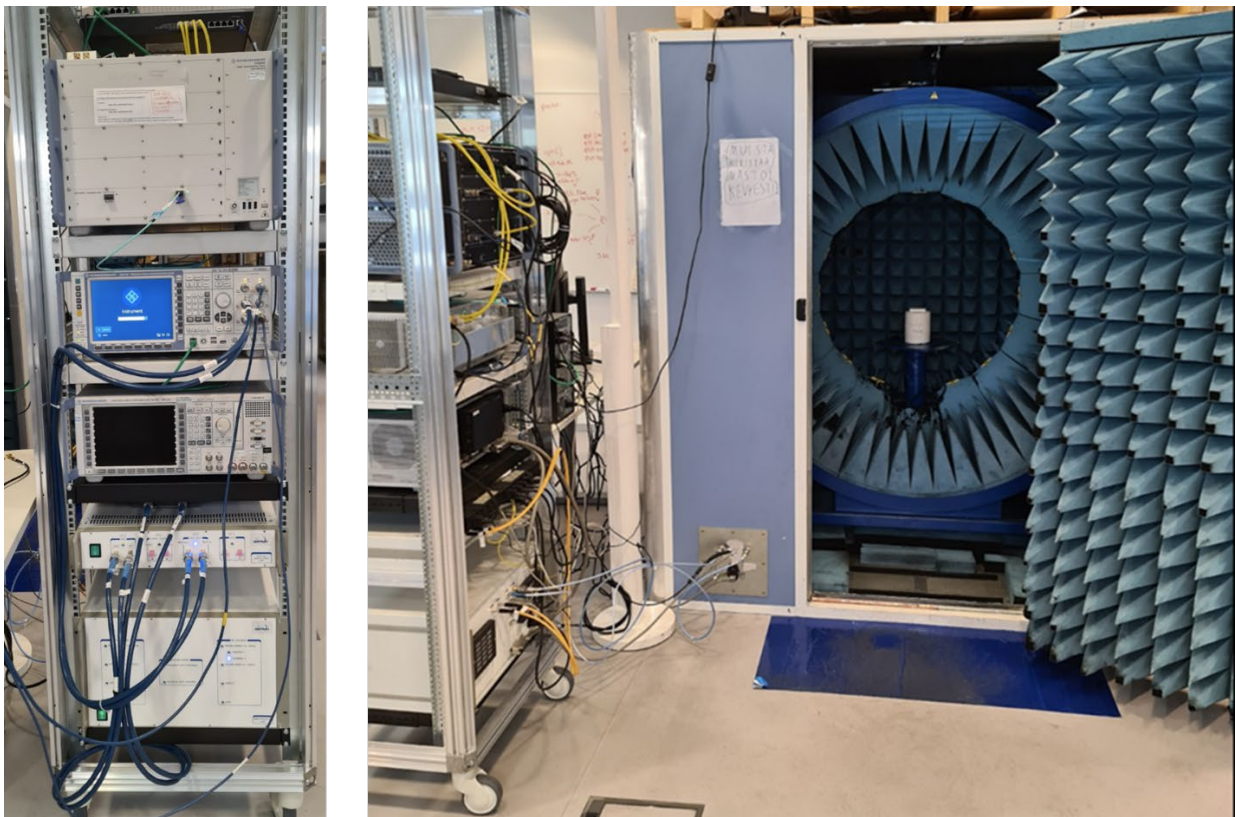
Manufacturer: Axon Enterprise Inc, 17800 N 85th St, Scottsdale, AZ 85255

Measured at: 2022. 04. 29.

Measurement Equipment

Equipment type	Model	Calibration date
Radio communication tester	<i>Rohde&Schwarz CMW 500</i>	2021, 1 st of December
Vector network analyser	<i>Copper Mountain Technologies M5090</i>	2022, 6 th of January
RF measurement chamber	<i>Satimo (MVG) StarLab16</i>	2022, 20 th of January

Calibration for OTA testing date: 2022_04_27



Commercial SW that was used in testing: MVG WaveStudio 22.5.5

Measurements done by: Mikko Sammeltu, Antenna Laboratory Engineer / Convergentia Ltd.

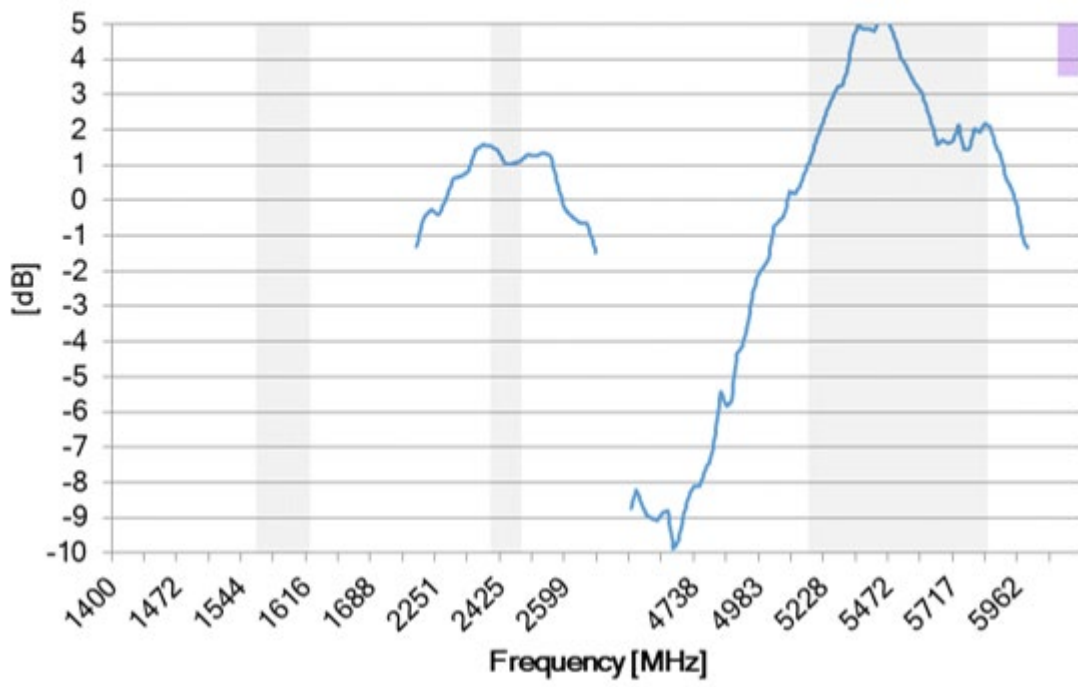
Description of the measurements:

S-parameters were measured in free space using the VNA.

Efficiency and Gain patterns were tested inside the RF-chamber.

Peak gain, WiFi2.4GHz + 5GHz

FS

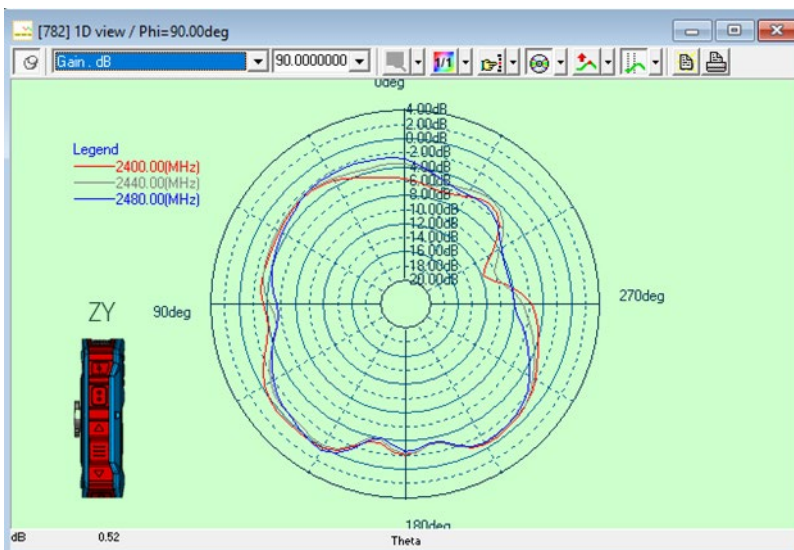
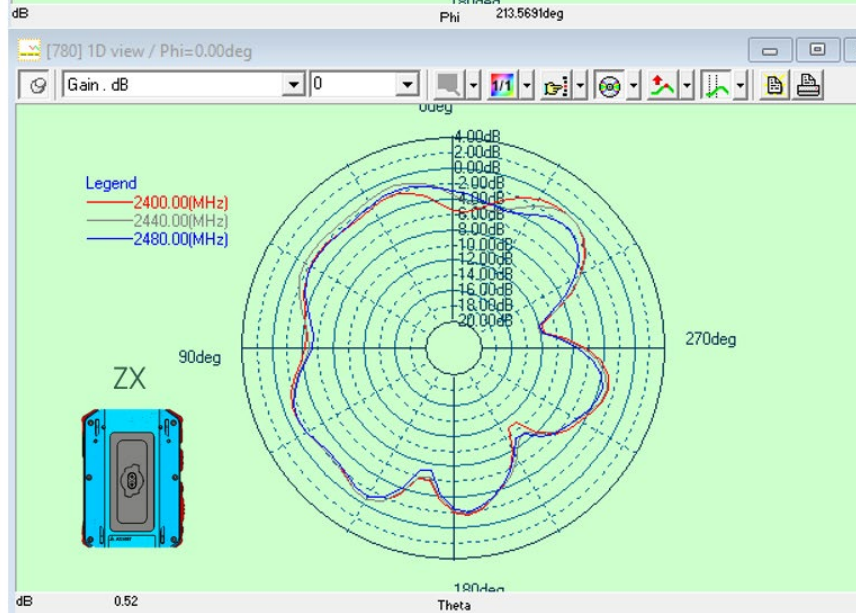
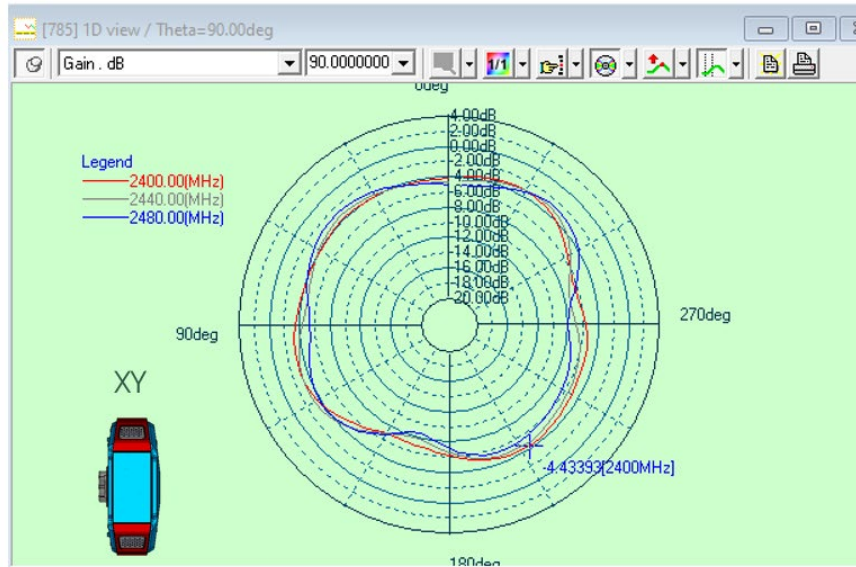


WiFi2.4GHz

FS

MHz	MaxGain[dBi]
2400	1.55
2420	1.41
2440	1.02
2460	1.04
2480	1.11
2500	1.30

maximum gain 1.55 dBi

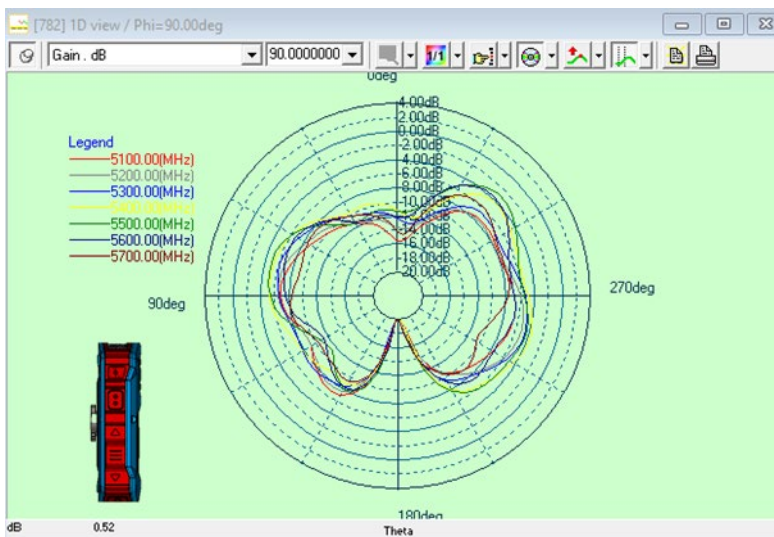
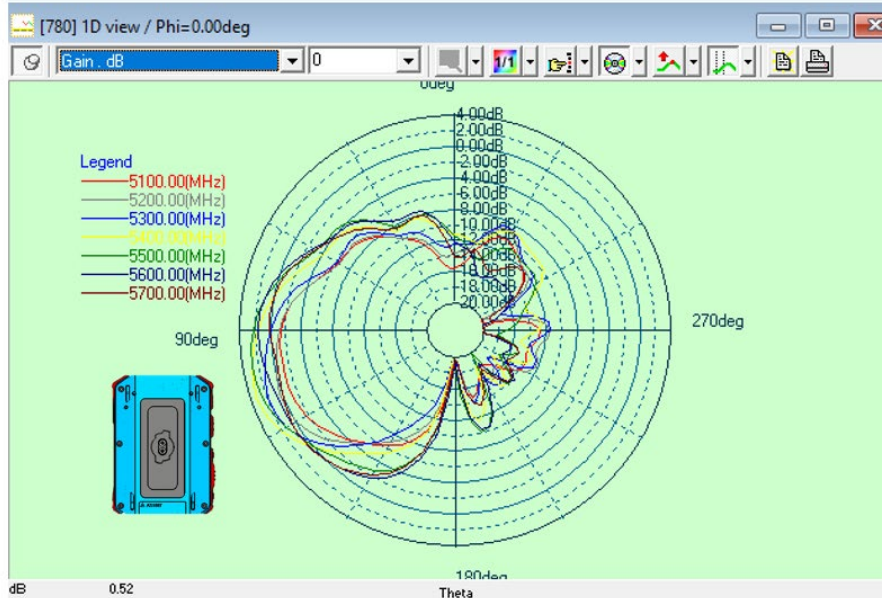
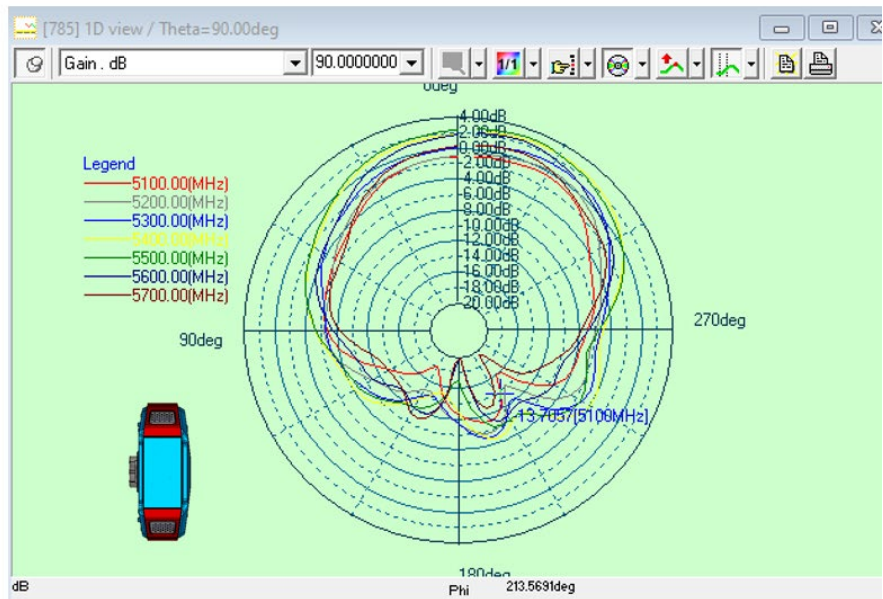


WiFi5GHz

FS

MHz	Max Gain[dBi]
5100	0.21
5200	1.64
5300	3.22
5400	4.83
5500	4.53
5600	3.03
5700	1.56
5800	1.98
5900	1.22

Maximum gain:
 5180-5240MHz: 1.64dBi
 5260-5320MHz: 3.22dBi
 5500-5700MHz: 4.53 dBi
 5745-5825MHz: 1.98 dBi



Return loss (S11)

AB04 NA -Ant5 (WiFi)

Free space

