

## WCDMA Band II

Frequency: 1880 MHz; Duty Cycle: 1:1; Room Ambient Temperature: 24.0°C; Liquid Temperature: 23.5°C  
Medium parameters used (interpolated):  $f = 1880$  MHz;  $\sigma = 1.419$  mho/m;  $\epsilon_r = 39.978$ ;  $\rho = 1000$  kg/m<sup>3</sup>

DASY5 Configuration:

- Area Scan Setting - Find Secondary Maximum Within: 2.0 dB and with a peak SAR value greater than 0.0012W/kg
- Electronics: DAE4 Sn877; Calibrated: 2012/03/16
- Probe: EX3DV4 - SN3665; ConvF(8.07, 8.07, 8.07); Calibrated: 2012/04/27;
- Sensor-Surface: 1.4mm (Mechanical Surface Detection)
- Phantom: SAM 34; Type: SAM V4.0; Serial: TP-1150

**Right/Cheek WCDMA Band II/CH9400/Area Scan (8x14x1):** Measurement grid: dx=15mm, dy=15mm

[Info: Interpolated medium parameters used for SAR evaluation.](#)

Maximum value of SAR (measured) = 0.156 W/kg

**Right/Cheek WCDMA Band II/CH9400/Zoom Scan (5x5x7)/Cube 0:** Measurement grid: dx=8mm, dy=8mm, dz=5mm

Reference Value = 3.768 V/m; Power Drift = -0.16 dB

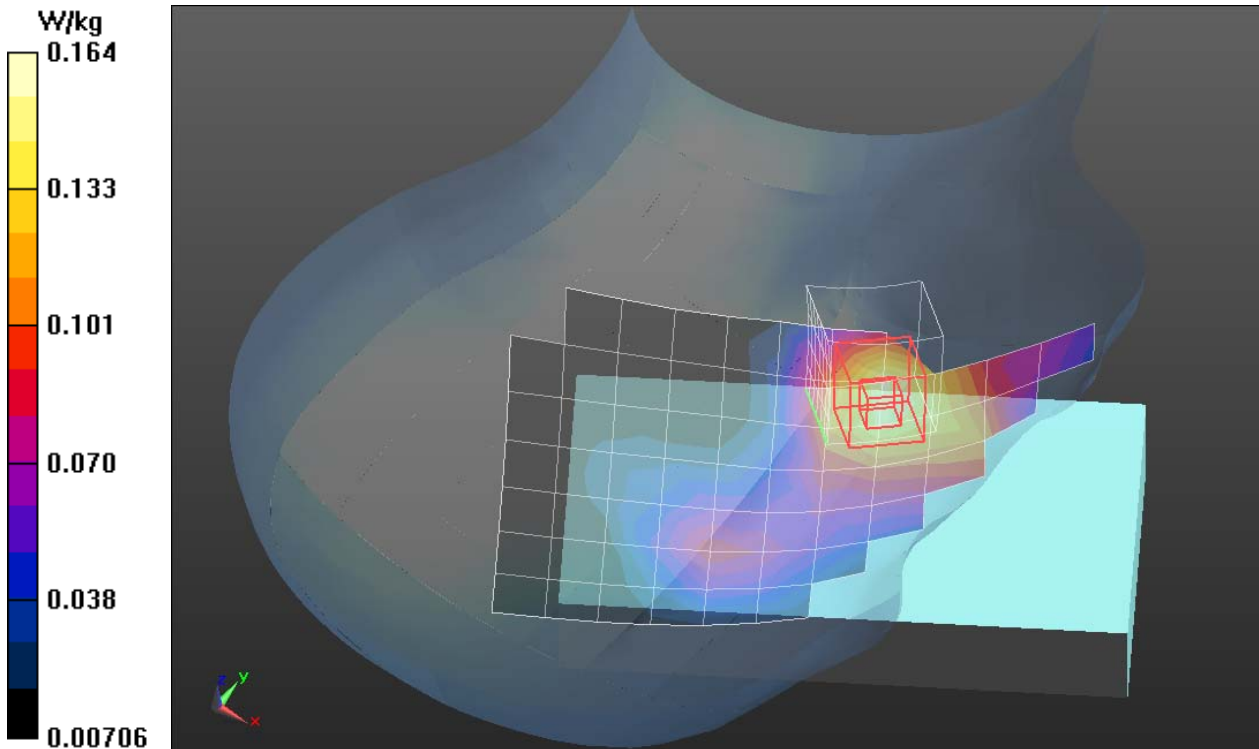
Peak SAR (extrapolated) = 0.191 W/kg

Peak SAR (extrapolated) = 0.191 W/kg

**SAR(1 g) = 0.125 W/kg; SAR(10 g) = 0.083 W/kg**

[Info: Interpolated medium parameters used for SAR evaluation.](#)

Maximum value of SAR (measured) = 0.164 W/kg



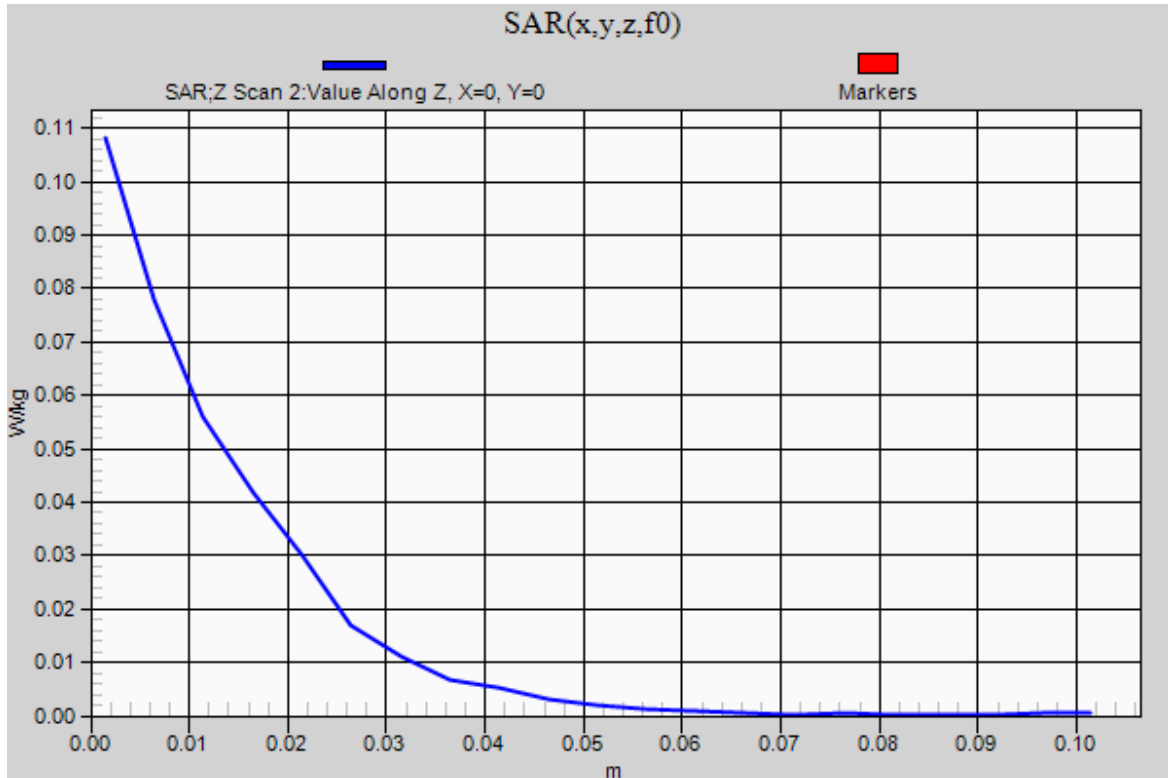
## WCDMA Band II

Frequency: 1880 MHz; Duty Cycle: 1:1

**Right/Cheek WCDMA Band II/CH9400/Z Scan 2 (1x1x21):** Measurement grid: dx=20mm, dy=20mm, dz=5mm

Info: [Interpolated medium parameters used for SAR evaluation.](#)

Maximum value of SAR (measured) = 0.108 W/kg



## WCDMA Band II

Frequency: 1880 MHz; Duty Cycle: 1:1; Room Ambient Temperature: 24.0°C; Liquid Temperature: 23.5°C  
 Medium parameters used (interpolated):  $f = 1880$  MHz;  $\sigma = 1.419$  mho/m;  $\epsilon_r = 39.978$ ;  $\rho = 1000$  kg/m<sup>3</sup>

DASY5 Configuration:

- Area Scan Setting - Find Secondary Maximum Within: 2.0 dB and with a peak SAR value greater than 0.0012W/kg
- Electronics: DAE4 Sn877; Calibrated: 2012/03/16
- Probe: EX3DV4 - SN3665; ConvF(8.07, 8.07, 8.07); Calibrated: 2012/04/27;
- Sensor-Surface: 1.4mm (Mechanical Surface Detection (Locations From Previous Scan Used)), Sensor-Surface: 1.4mm (Mechanical Surface Detection)
- Phantom: SAM 34; Type: SAM V4.0; Serial: TP-1150

**Right/Tilted WCDMA Band II/CH9400/Area Scan (8x14x1):** Measurement grid: dx=15mm, dy=15mm

[Info: Interpolated medium parameters used for SAR evaluation.](#)

Maximum value of SAR (measured) = 0.132 W/kg

**Right/Tilted WCDMA Band II/CH9400/Zoom Scan (5x5x7)/Cube 0:** Measurement grid: dx=8mm, dy=8mm, dz=5mm

Reference Value = 6.679 V/m; Power Drift = 0.13 dB

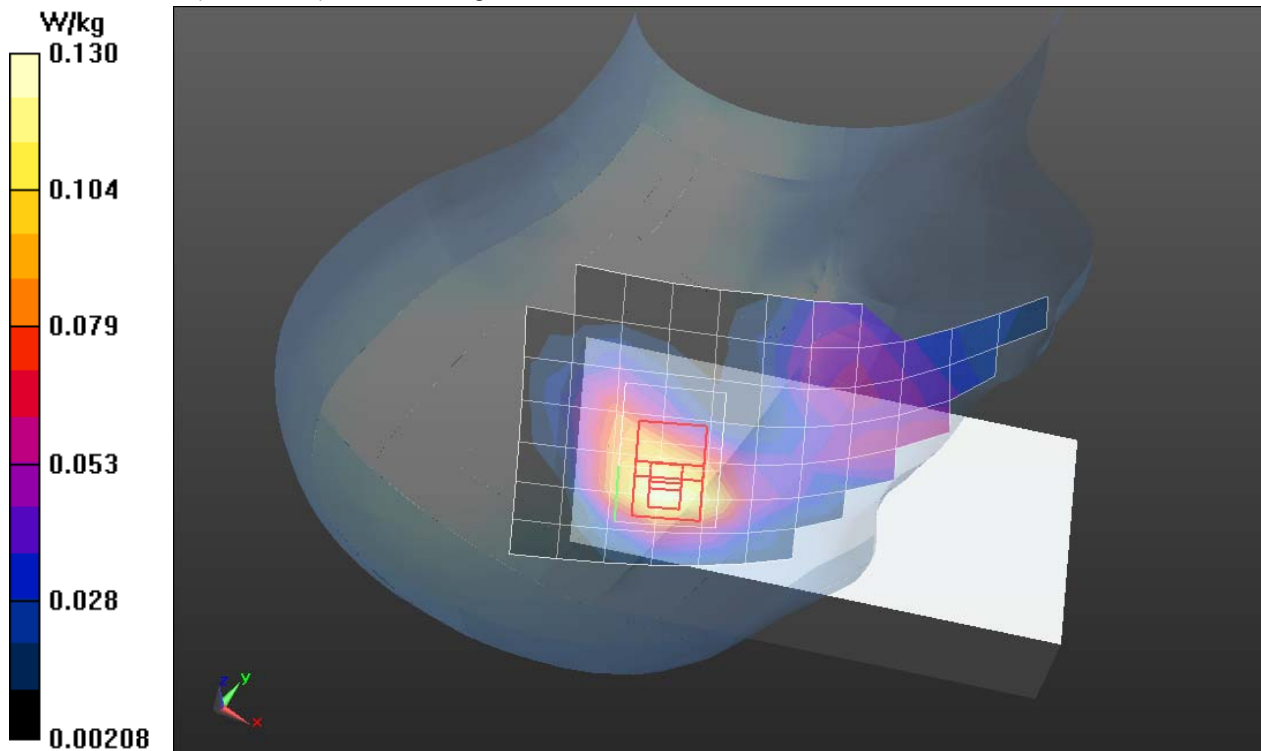
Peak SAR (extrapolated) = 0.134 W/kg

Peak SAR (extrapolated) = 0.134 W/kg

**SAR(1 g) = 0.088 W/kg; SAR(10 g) = 0.055 W/kg**

[Info: Interpolated medium parameters used for SAR evaluation.](#)

Maximum value of SAR (measured) = 0.114 W/kg



## WCDMA Band II

Frequency: 1880 MHz; Duty Cycle: 1:1; Room Ambient Temperature: 24.0°C; Liquid Temperature: 23.5°C  
Medium parameters used (interpolated):  $f = 1880$  MHz;  $\sigma = 1.419$  mho/m;  $\epsilon_r = 39.978$ ;  $\rho = 1000$  kg/m<sup>3</sup>

DASY5 Configuration:

- Area Scan Setting - Find Secondary Maximum Within: 2.0 dB and with a peak SAR value greater than 0.0012W/kg
- Electronics: DAE4 Sn877; Calibrated: 2012/03/16
- Probe: EX3DV4 - SN3665; ConvF(8.07, 8.07, 8.07); Calibrated: 2012/04/27;
- Sensor-Surface: 1.4mm (Mechanical Surface Detection)
- Phantom: SAM 34; Type: SAM V4.0; Serial: TP-1150

**Left/Cheek WCDMA Band II/CH9400/Area Scan (8x14x1):** Measurement grid: dx=15mm, dy=15mm

[Info: Interpolated medium parameters used for SAR evaluation.](#)

Maximum value of SAR (measured) = 0.0935 W/kg

**Left/Cheek WCDMA Band II/CH9400/Zoom Scan (5x5x7)/Cube 0:** Measurement grid: dx=8mm, dy=8mm, dz=5mm

Reference Value = 5.239 V/m; Power Drift = -0.17 dB

Peak SAR (extrapolated) = 0.109 W/kg

**SAR(1 g) = 0.077 W/kg; SAR(10 g) = 0.053 W/kg**

[Info: Interpolated medium parameters used for SAR evaluation.](#)

Maximum value of SAR (measured) = 0.0978 W/kg

**Left/Cheek WCDMA Band II/CH9400/Zoom Scan (5x5x7)/Cube 1:** Measurement grid: dx=8mm, dy=8mm, dz=5mm

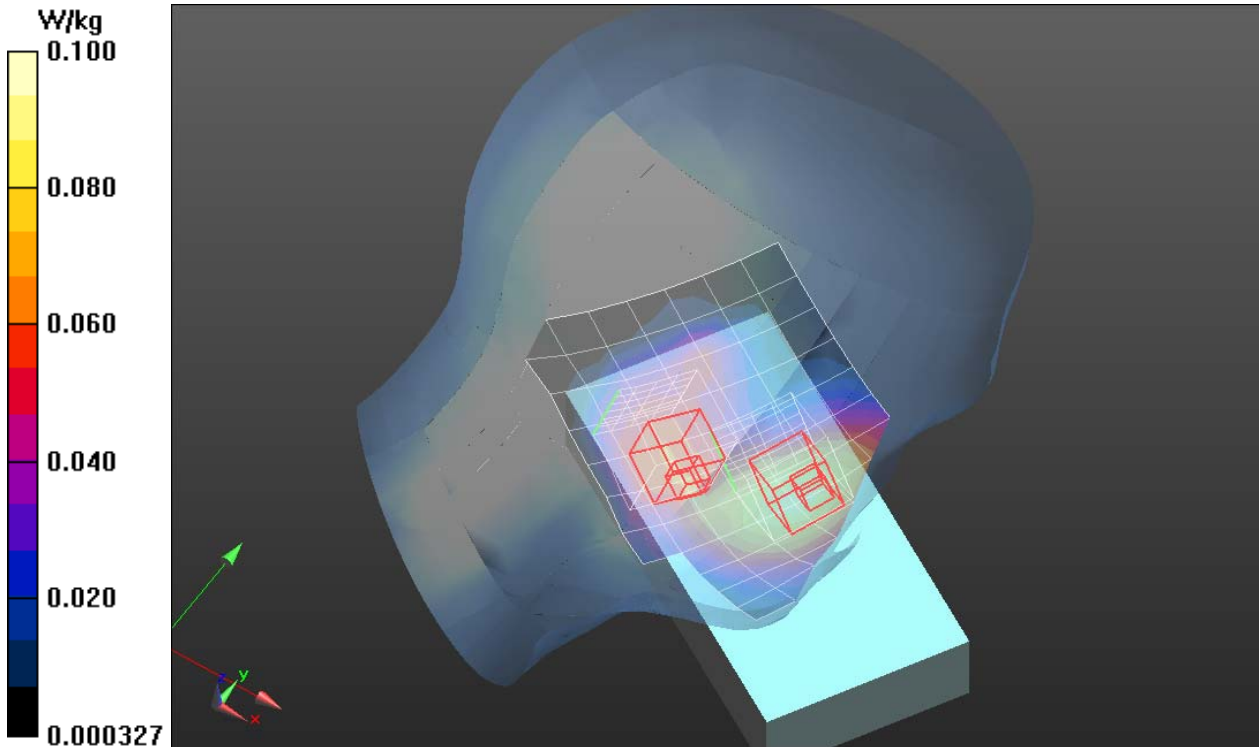
Reference Value = 5.239 V/m; Power Drift = -0.17 dB

Peak SAR (extrapolated) = 0.0760 W/kg

**SAR(1 g) = 0.050 W/kg; SAR(10 g) = 0.034 W/kg**

[Info: Interpolated medium parameters used for SAR evaluation.](#)

Maximum value of SAR (measured) = 0.0641 W/kg



## WCDMA Band II

Frequency: 1880 MHz; Duty Cycle: 1:1; Room Ambient Temperature: 24.0°C; Liquid Temperature: 23.5°C  
Medium parameters used (interpolated):  $f = 1880$  MHz;  $\sigma = 1.419$  mho/m;  $\epsilon_r = 39.978$ ;  $\rho = 1000$  kg/m<sup>3</sup>

DASY5 Configuration:

- Area Scan Setting - Find Secondary Maximum Within: 2.0 dB and with a peak SAR value greater than 0.0012W/kg
- Electronics: DAE4 Sn877; Calibrated: 2012/03/16
- Probe: EX3DV4 - SN3665; ConvF(8.07, 8.07, 8.07); Calibrated: 2012/04/27;
- Sensor-Surface: 1.4mm (Mechanical Surface Detection (Locations From Previous Scan Used)), Sensor-Surface: 1.4mm (Mechanical Surface Detection)
- Phantom: SAM 34; Type: SAM V4.0; Serial: TP-1150

**Left/Tilted WCDMA Band II/CH9400/Area Scan (8x14x1):** Measurement grid: dx=15mm, dy=15mm

[Info: Interpolated medium parameters used for SAR evaluation.](#)

Maximum value of SAR (measured) = 0.0958 W/kg

**Left/Tilted WCDMA Band II/CH9400/Zoom Scan (5x5x7)/Cube 0:** Measurement grid: dx=8mm, dy=8mm, dz=5mm

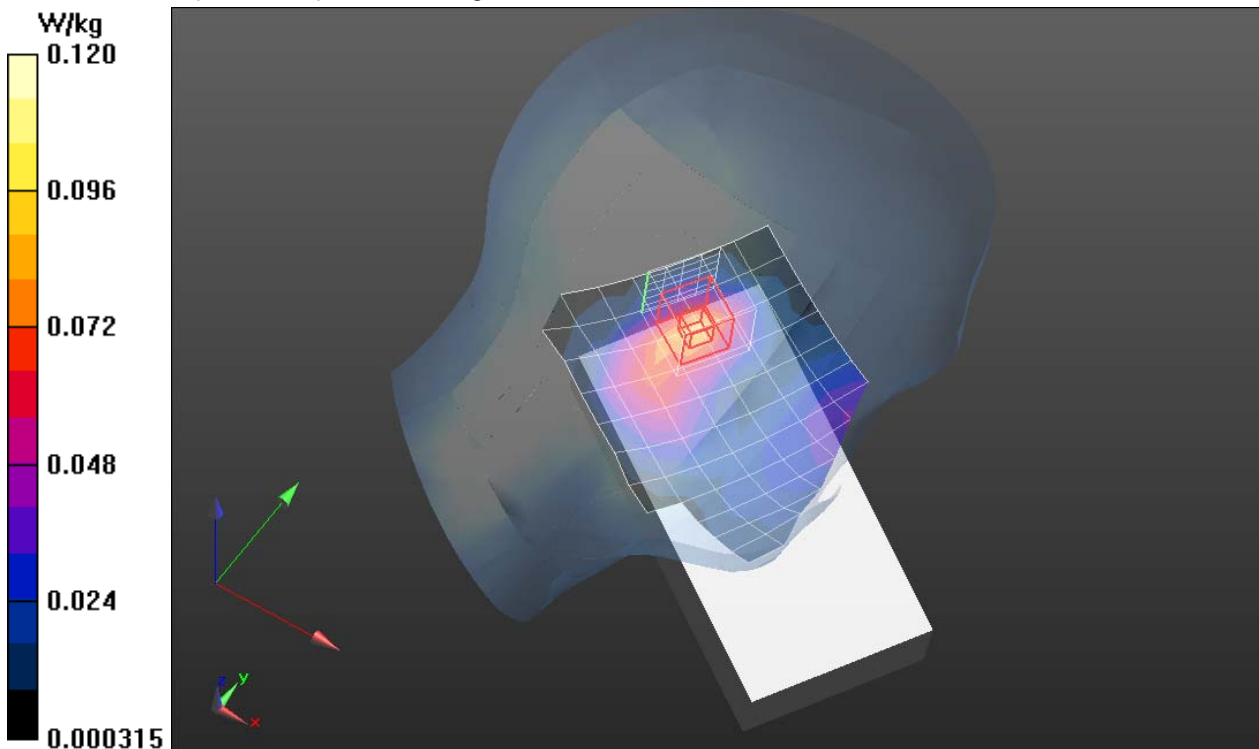
Reference Value = 6.679 V/m; Power Drift = 0.13 dB

Peak SAR (extrapolated) = 0.117 W/kg

**SAR(1 g) = 0.073 W/kg; SAR(10 g) = 0.044 W/kg**

[Info: Interpolated medium parameters used for SAR evaluation.](#)

Maximum value of SAR (measured) = 0.102 W/kg



## WCDMA Band II

Frequency: 1880 MHz; Duty Cycle: 1:1; Room Ambient Temperature: 24.0°C; Liquid Temperature: 23.5°C  
Medium parameters used (interpolated):  $f = 1880$  MHz;  $\sigma = 1.516$  S/m;  $\epsilon_r = 50.758$ ;  $\rho = 1000$  kg/m<sup>3</sup>

DASY5 Configuration:

- Area Scan Setting - Find Secondary Maximum Within: 2.0 dB and with a peak SAR value greater than 0.0012W/kg
- Electronics: DAE4 Sn877; Calibrated: 2012/03/16
- Probe: EX3DV4 - SN3665; ConvF(7.49, 7.49, 7.49); Calibrated: 2012/04/27;
- Sensor-Surface: 1.4mm (Mechanical Surface Detection)
- Phantom: SAM 34; Type: SAM V4.0; Serial: TP-1150

**Front Side/WCDMA Band II/CH9400/Area Scan (9x10x1):** Measurement grid: dx=15mm, dy=15mm

[Info: Interpolated medium parameters used for SAR evaluation.](#)

Maximum value of SAR (measured) = 0.226 W/kg

**Front Side/WCDMA Band II/CH9400/Zoom Scan (5x5x7)/Cube 0:** Measurement grid: dx=8mm, dy=8mm, dz=5mm

Reference Value = 5.992 V/m; Power Drift = 0.13 dB

Peak SAR (extrapolated) = 0.271 W/kg

**SAR(1 g) = 0.169 W/kg; SAR(10 g) = 0.104 W/kg**

[Info: Interpolated medium parameters used for SAR evaluation.](#)

Maximum value of SAR (measured) = 0.235 W/kg

**Front Side/WCDMA Band II/CH9400/Zoom Scan (5x5x7)/Cube 1:** Measurement grid: dx=8mm, dy=8mm, dz=5mm

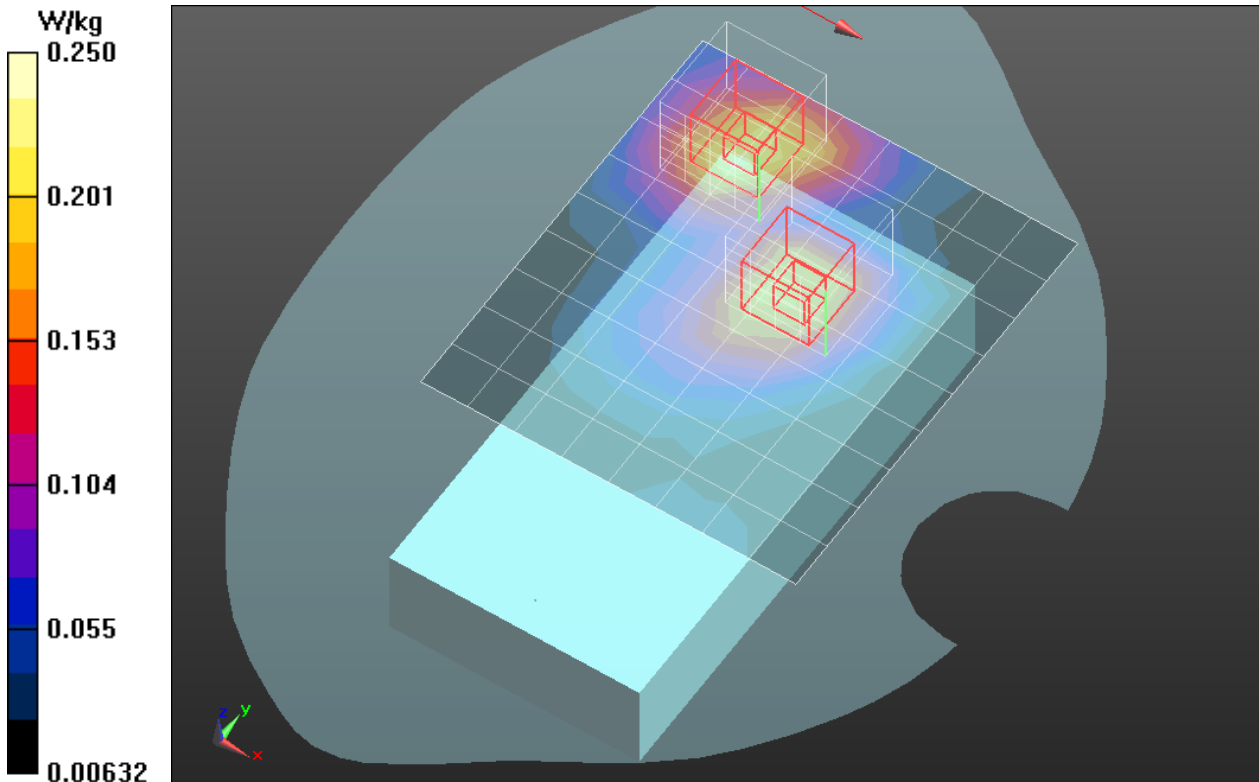
Reference Value = 5.992 V/m; Power Drift = 0.13 dB

Peak SAR (extrapolated) = 0.237 W/kg

**SAR(1 g) = 0.159 W/kg; SAR(10 g) = 0.107 W/kg**

[Info: Interpolated medium parameters used for SAR evaluation.](#)

Maximum value of SAR (measured) = 0.207 W/kg



## WCDMA Band II

Frequency: 1880 MHz; Duty Cycle: 1:1; Room Ambient Temperature: 24.0°C; Liquid Temperature: 23.5°C  
Medium parameters used (interpolated):  $f = 1880$  MHz;  $\sigma = 1.516$  S/m;  $\epsilon_r = 50.758$ ;  $\rho = 1000$  kg/m<sup>3</sup>

DASY5 Configuration:

- Area Scan Setting - Find Secondary Maximum Within: 2.0 dB and with a peak SAR value greater than 0.0012W/kg
- Electronics: DAE4 Sn877; Calibrated: 2012/03/16
- Probe: EX3DV4 - SN3665; ConvF(7.49, 7.49, 7.49); Calibrated: 2012/04/27;
- Sensor-Surface: 1.4mm (Mechanical Surface Detection)
- Phantom: SAM 34; Type: SAM V4.0; Serial: TP-1150

**Rear Side/WCDMA Band II/CH9400/Area Scan (9x10x1):** Measurement grid: dx=15mm, dy=15mm

[Info: Interpolated medium parameters used for SAR evaluation.](#)

Maximum value of SAR (measured) = 0.490 W/kg

**Rear Side/WCDMA Band II/CH9400/Zoom Scan (5x5x7)/Cube 0:** Measurement grid: dx=8mm, dy=8mm, dz=5mm

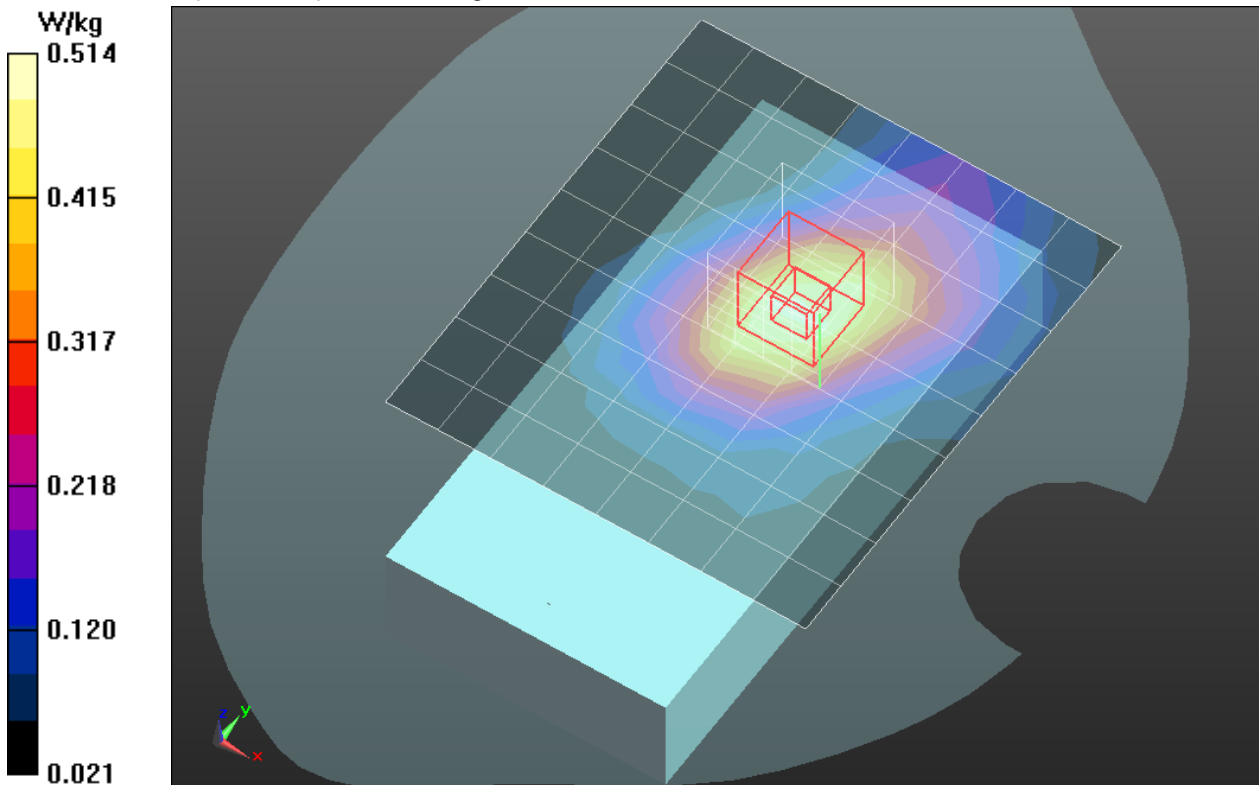
Reference Value = 5.992 V/m; Power Drift = 0.13 dB

Peak SAR (extrapolated) = 0.590 W/kg

**SAR(1 g) = 0.382 W/kg; SAR(10 g) = 0.249 W/kg**

[Info: Interpolated medium parameters used for SAR evaluation.](#)

Maximum value of SAR (measured) = 0.514 W/kg



## WCDMA Band II

Frequency: 1880 MHz; Duty Cycle: 1:1; Room Ambient Temperature: 24.0°C; Liquid Temperature: 23.5°C  
Medium parameters used (interpolated):  $f = 1880$  MHz;  $\sigma = 1.516$  S/m;  $\epsilon_r = 50.758$ ;  $\rho = 1000$  kg/m<sup>3</sup>

DASY5 Configuration:

- Area Scan Setting - Find Secondary Maximum Within: 2.0 dB and with a peak SAR value greater than 0.0012W/kg
- Electronics: DAE4 Sn877; Calibrated: 2012/03/16
- Probe: EX3DV4 - SN3665; ConvF(7.49, 7.49, 7.49); Calibrated: 2012/04/27;
- Sensor-Surface: 1.4mm (Mechanical Surface Detection)
- Phantom: SAM 34; Type: SAM V4.0; Serial: TP-1150

**Edge2/WCDMA Band II/CH9400/Area Scan (6x6x1):** Measurement grid: dx=15mm, dy=15mm

[Info: Interpolated medium parameters used for SAR evaluation.](#)

Maximum value of SAR (measured) = 0.483 W/kg

**Edge2/WCDMA Band II/CH9400/Zoom Scan (5x5x7)/Cube 0:** Measurement grid: dx=8mm, dy=8mm, dz=5mm

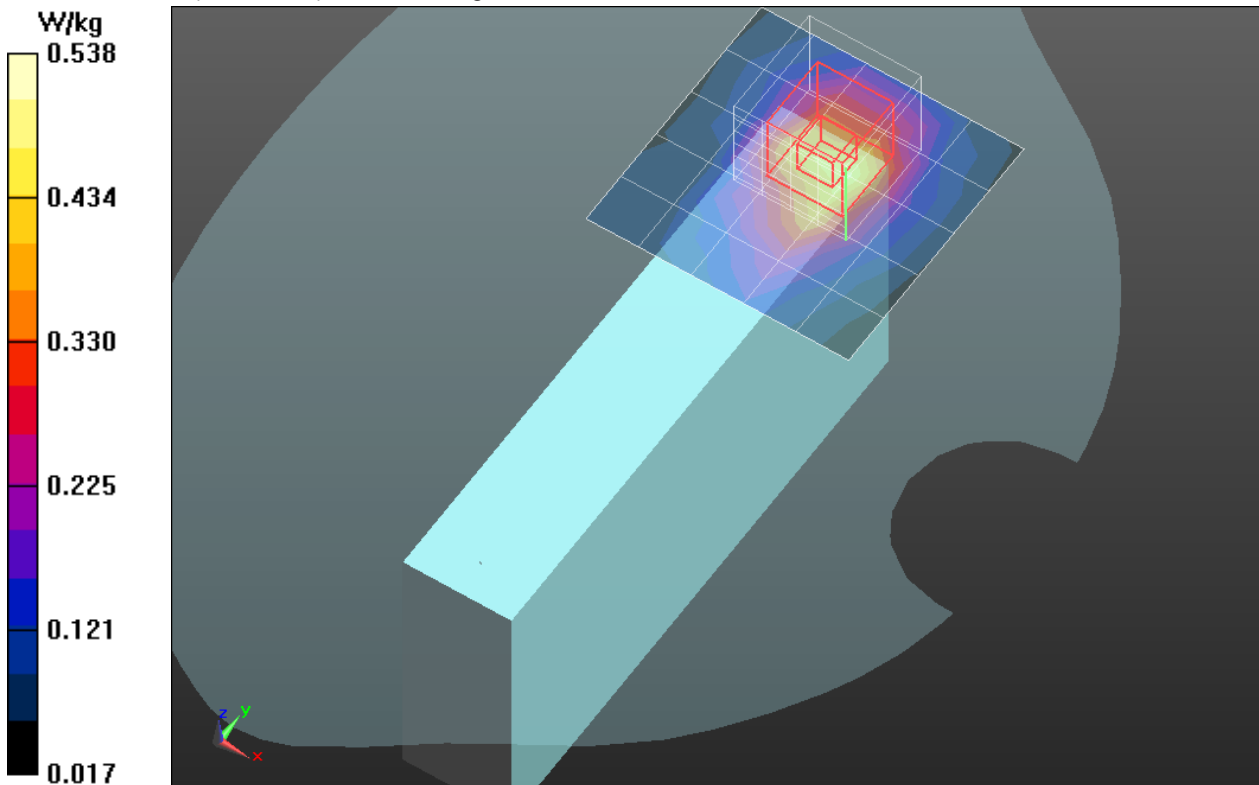
Reference Value = 7.741 V/m; Power Drift = -0.12 dB

Peak SAR (extrapolated) = 0.631 W/kg

**SAR(1 g) = 0.367 W/kg; SAR(10 g) = 0.211 W/kg**

[Info: Interpolated medium parameters used for SAR evaluation.](#)

Maximum value of SAR (measured) = 0.538 W/kg





## WCDMA Band II

Frequency: 1852.4 MHz; Duty Cycle: 1:1; Room Ambient Temperature: 24.0°C; Liquid Temperature: 23.5°C  
Medium parameters used (interpolated):  $f = 1852.4$  MHz;  $\sigma = 1.486$  S/m;  $\epsilon_r = 50.783$ ;  $\rho = 1000$  kg/m<sup>3</sup>

DASY5 Configuration:

- Area Scan Setting - Find Secondary Maximum Within: 2.0 dB and with a peak SAR value greater than 0.0012W/kg
- Electronics: DAE4 Sn877; Calibrated: 2012/03/16
- Probe: EX3DV4 - SN3665; ConvF(7.49, 7.49, 7.49); Calibrated: 2012/04/27;
- Sensor-Surface: 1.4mm (Mechanical Surface Detection)
- Phantom: SAM 34; Type: SAM V4.0; Serial: TP-1150

**Edge3/WCDMA Band II/CH9262/Area Scan (7x7x1):** Measurement grid: dx=15mm, dy=15mm

[Info: Interpolated medium parameters used for SAR evaluation.](#)

Maximum value of SAR (measured) = 1.26 W/kg

**Edge3/WCDMA Band II/CH9262/Zoom Scan (5x5x7)/Cube 0:** Measurement grid: dx=8mm, dy=8mm, dz=5mm

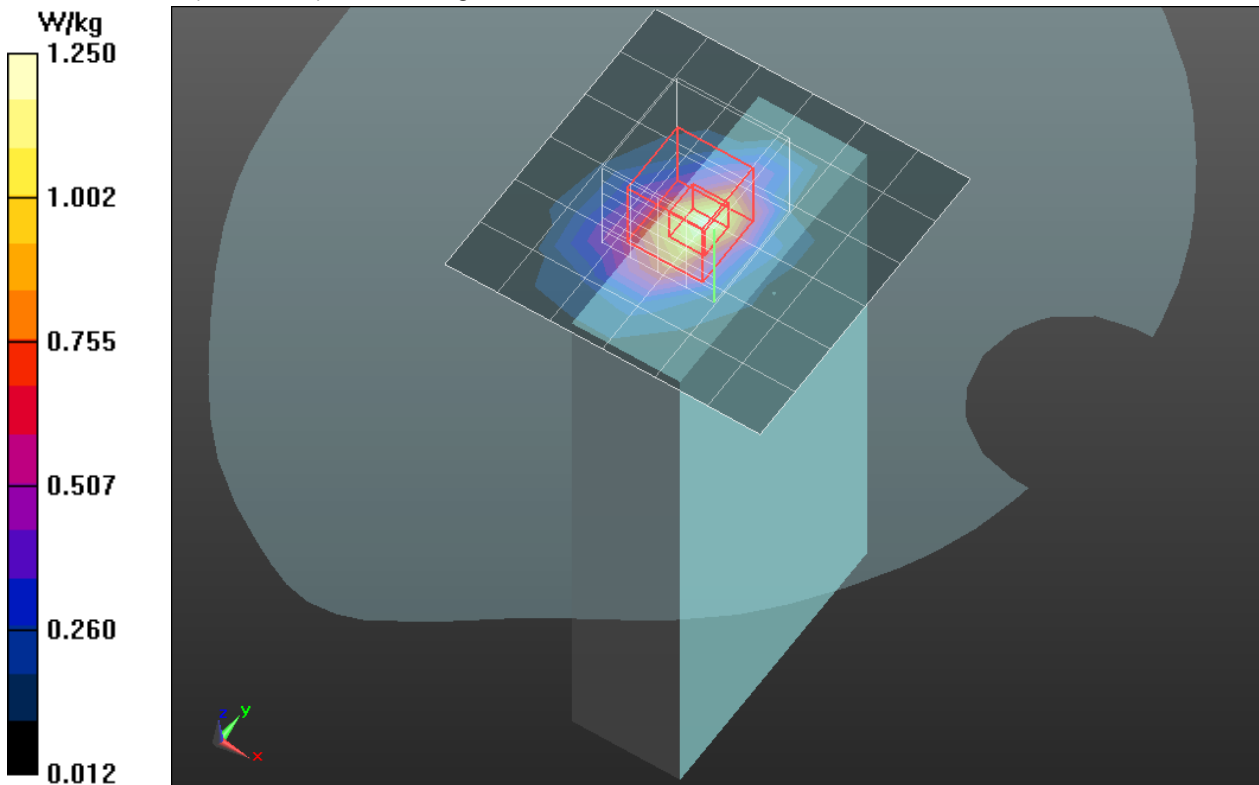
Reference Value = 28.249 V/m; Power Drift = 0.09 dB

Peak SAR (extrapolated) = 1.50 W/kg

**SAR(1 g) = 0.830 W/kg; SAR(10 g) = 0.437 W/kg**

[Info: Interpolated medium parameters used for SAR evaluation.](#)

Maximum value of SAR (measured) = 1.25 W/kg



## WCDMA Band II

Frequency: 1880 MHz; Duty Cycle: 1:1; Room Ambient Temperature: 24.0°C; Liquid Temperature: 23.5°C  
Medium parameters used (interpolated):  $f = 1880$  MHz;  $\sigma = 1.516$  S/m;  $\epsilon_r = 50.758$ ;  $\rho = 1000$  kg/m<sup>3</sup>

DASY5 Configuration:

- Area Scan Setting - Find Secondary Maximum Within: 2.0 dB and with a peak SAR value greater than 0.0012W/kg
- Electronics: DAE4 Sn877; Calibrated: 2012/03/16
- Probe: EX3DV4 - SN3665; ConvF(7.49, 7.49, 7.49); Calibrated: 2012/04/27;
- Sensor-Surface: 1.4mm (Mechanical Surface Detection)
- Phantom: SAM 34; Type: SAM V4.0; Serial: TP-1150

**Edge3/WCDMA Band II/CH9400/Area Scan (7x7x1):** Measurement grid: dx=15mm, dy=15mm

[Info: Interpolated medium parameters used for SAR evaluation.](#)

Maximum value of SAR (measured) = 1.34 W/kg

**Edge3/WCDMA Band II/CH9400/Zoom Scan (5x5x7)/Cube 0:** Measurement grid: dx=8mm, dy=8mm, dz=5mm

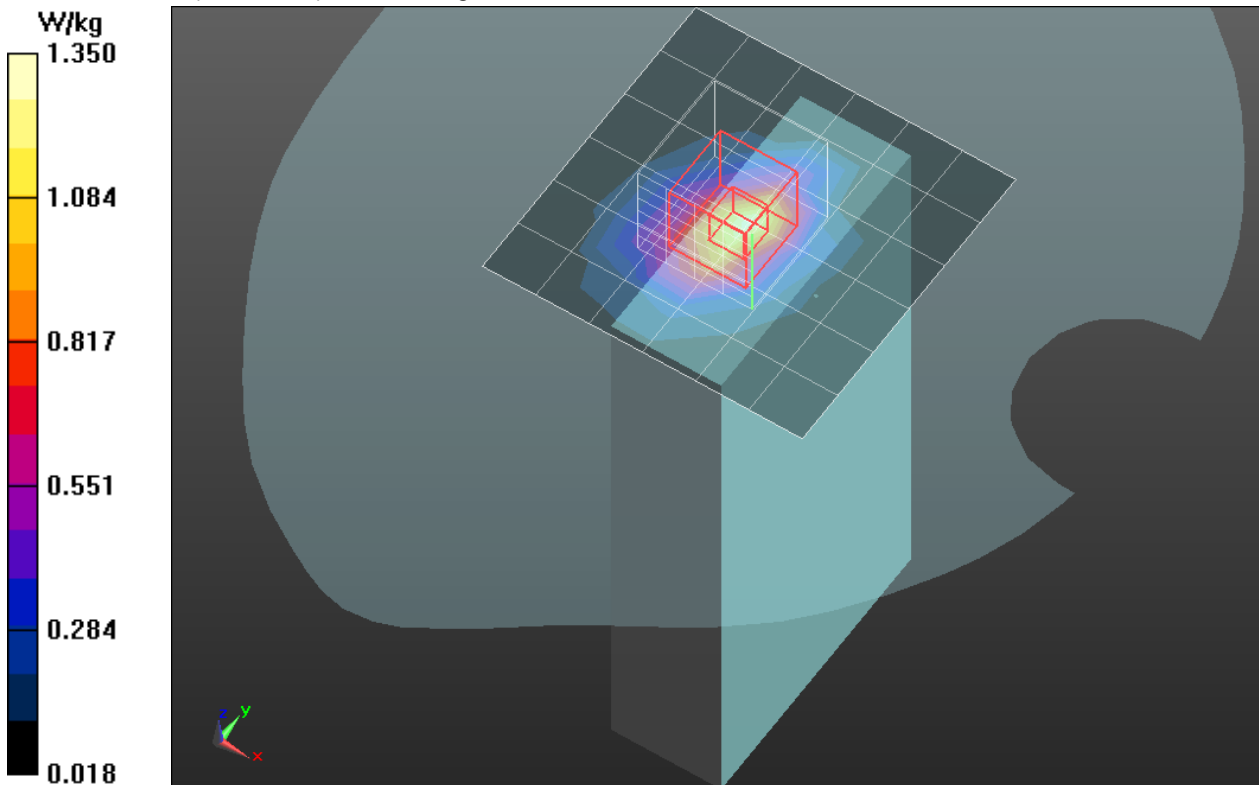
Reference Value = 28.506 V/m; Power Drift = -0.12 dB

Peak SAR (extrapolated) = 1.62 W/kg

**SAR(1 g) = 0.893 W/kg; SAR(10 g) = 0.471 W/kg**

[Info: Interpolated medium parameters used for SAR evaluation.](#)

Maximum value of SAR (measured) = 1.35 W/kg



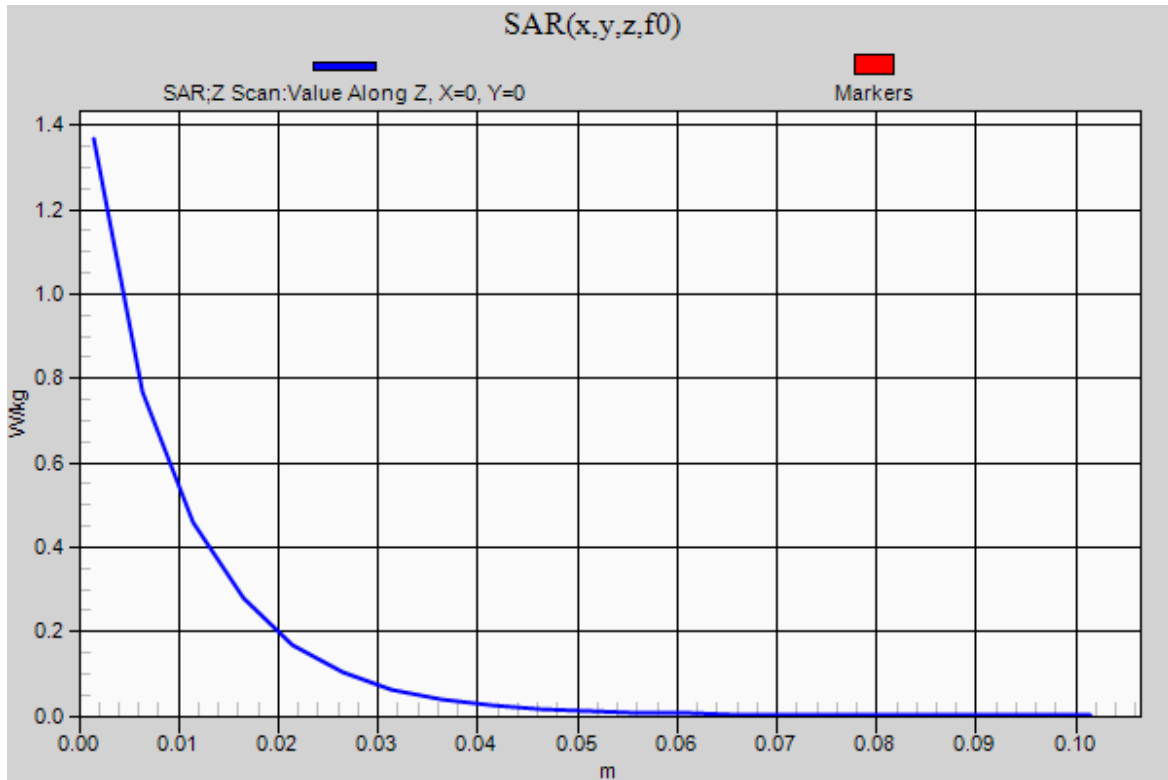
## WCDMA Band II

Frequency: 1880 MHz; Duty Cycle: 1:1

**Edge3/WCDMA Band II/CH9400/Z Scan (1x1x21):** Measurement grid: dx=20mm, dy=20mm, dz=5mm

Info: [Interpolated medium parameters used for SAR evaluation.](#)

Maximum value of SAR (measured) = 1.37 W/kg



## WCDMA Band II

Frequency: 1907.6 MHz; Duty Cycle: 1:1; Room Ambient Temperature: 24.0°C; Liquid Temperature: 23.5°C  
Medium parameters used:  $f = 1907.8$  MHz;  $\sigma = 1.542$  S/m;  $\epsilon_r = 50.653$ ;  $\rho = 1000$  kg/m<sup>3</sup>

DASY5 Configuration:

- Area Scan Setting - Find Secondary Maximum Within: 2.0 dB and with a peak SAR value greater than 0.0012W/kg
- Electronics: DAE4 Sn877; Calibrated: 2012/03/16
- Probe: EX3DV4 - SN3665; ConvF(7.49, 7.49, 7.49); Calibrated: 2012/04/27;
- Sensor-Surface: 1.4mm (Mechanical Surface Detection)
- Phantom: SAM 34; Type: SAM V4.0; Serial: TP-1150

**Edge3/WCDMA Band II/CH9538/Area Scan (7x7x1):** Measurement grid: dx=15mm, dy=15mm

Maximum value of SAR (measured) = 1.17 W/kg

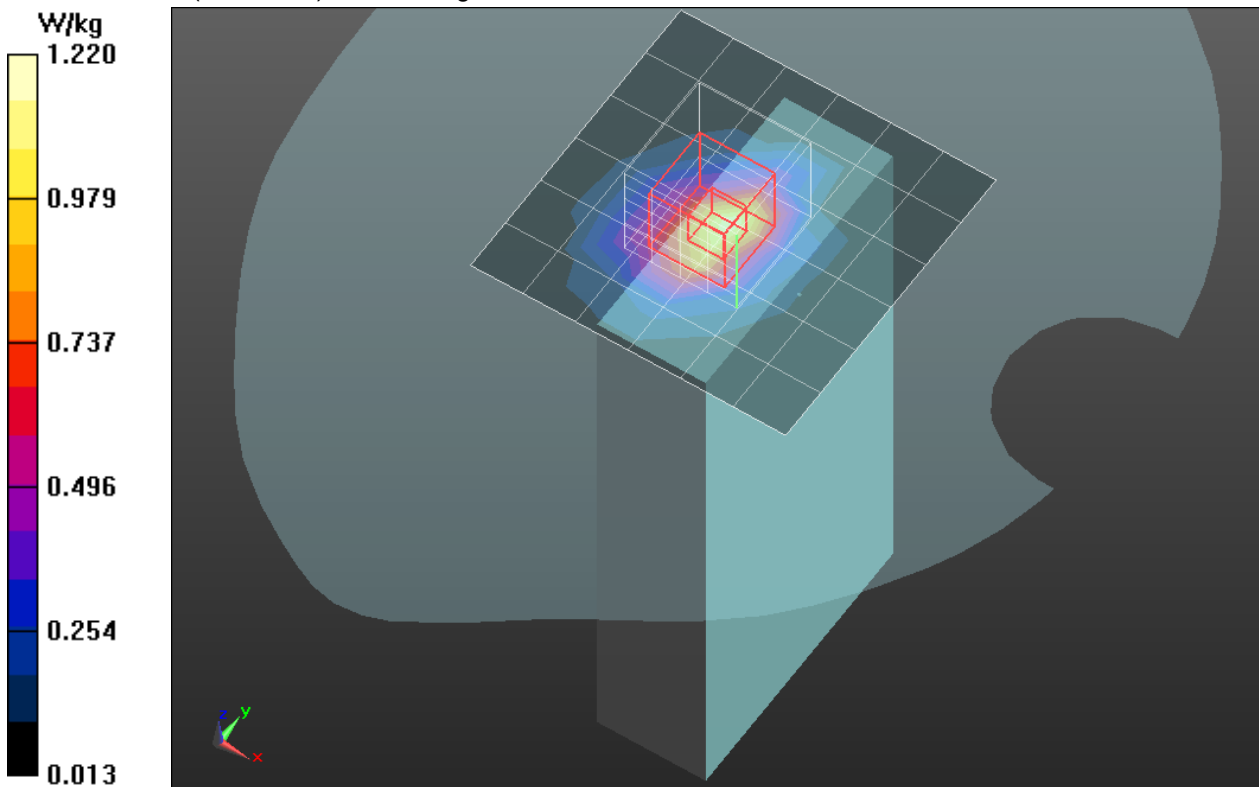
**Edge3/WCDMA Band II/CH9538/Zoom Scan (5x5x7)/Cube 0:** Measurement grid: dx=8mm, dy=8mm, dz=5mm

Reference Value = 26.185 V/m; Power Drift = 0.17 dB

Peak SAR (extrapolated) = 1.46 W/kg

**SAR(1 g) = 0.796 W/kg; SAR(10 g) = 0.420 W/kg**

Maximum value of SAR (measured) = 1.22 W/kg



## WCDMA Band II

Frequency: 1880 MHz; Duty Cycle: 1:1; Room Ambient Temperature: 24.0°C; Liquid Temperature: 23.5°C  
Medium parameters used (interpolated):  $f = 1880$  MHz;  $\sigma = 1.536$  S/m;  $\epsilon_r = 51.611$ ;  $\rho = 1000$  kg/m<sup>3</sup>

DASY5 Configuration:

- Area Scan Setting - Find Secondary Maximum Within: 2.0 dB and with a peak SAR value greater than 0.0012W/kg
- Electronics: DAE4 Sn877; Calibrated: 2012/03/16
- Probe: EX3DV4 - SN3665; ConvF(7.49, 7.49, 7.49); Calibrated: 2012/04/27;
- Sensor-Surface: 1.4mm (Mechanical Surface Detection)
- Phantom: SAM 34; Type: SAM V4.0; Serial: TP-1150

**Edge3/WCDMA Band II/CH9400/Area Scan (7x7x1):** Measurement grid: dx=15mm, dy=15mm

[Info: Interpolated medium parameters used for SAR evaluation.](#)

Maximum value of SAR (measured) = 1.25 W/kg

**Edge3/WCDMA Band II/CH9400/Zoom Scan (5x5x7)/Cube 0:** Measurement grid: dx=8mm, dy=8mm, dz=5mm

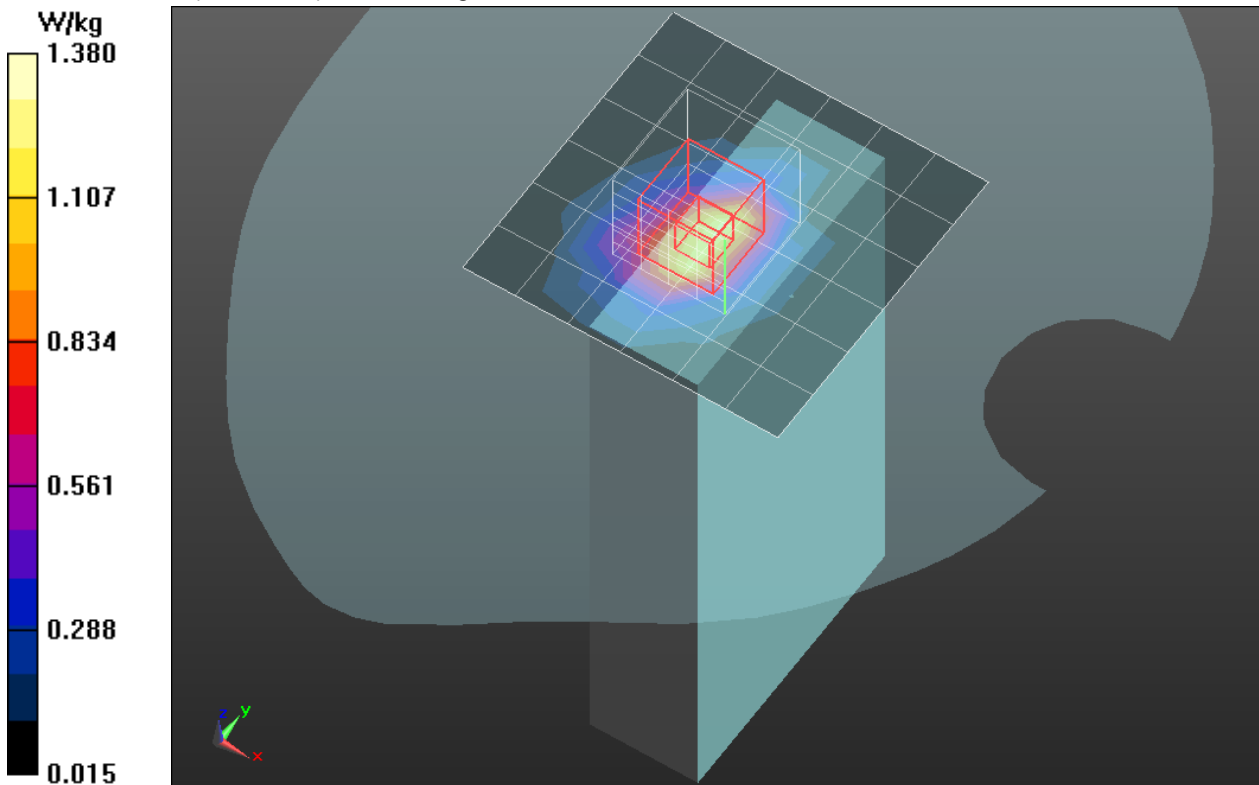
Reference Value = 26.512 V/m; Power Drift = 0.10 dB

Peak SAR (extrapolated) = 1.64 W/kg

**SAR(1 g) = 0.924 W/kg; SAR(10 g) = 0.492 W/kg**

[Info: Interpolated medium parameters used for SAR evaluation.](#)

Maximum value of SAR (measured) = 1.38 W/kg



## WCDMA Band II

Frequency: 1880 MHz; Duty Cycle: 1:1

**Edge3/WCDMA Band II/CH9400/Z Scan (1x1x21):** Measurement grid: dx=20mm, dy=20mm, dz=5mm

[Info: Interpolated medium parameters used for SAR evaluation.](#)

Maximum value of SAR (measured) = 1.35 W/kg

