

20160603_System check_Diple5GHzv2 SN1004

Frequency: 5200 MHz; Duty Cycle: 1:1; Room Ambient Temperature: 25.0°C; Liquid Temperature: 24.0°C

Medium parameters used (interpolated): $f = 5200$ MHz; $\sigma = 5.31$ mho/m; $\epsilon_r = 48.4$; $\rho = 1000$ kg/m³ ;

DASY4 Configuration:

- Area Scan setting - Find Secondary Maximum Within: 2.0 dB and with a peak SAR value greater than 0.0012W/kg
- Electronics: DAE4 Sn558; Calibrated: 7/16/2015
- Probe: EX3DV4 - SN3554; ConvF(3.85, 3.85, 3.85); Calibrated: 10/1/2015
- Sensor-Surface: 2.5mm (Mechanical Surface Detection)
- Phantom: Flat Phantom ELI4.0; Type: QDOVA001BA; Serial: SN: 1052

Body/5200MHz,Pin=100mW,d= 2/Area Scan (7x7x1): Measurement grid: dx=10mm, dy=10mm

[Info: Interpolated medium parameters used for SAR evaluation.](#)

Maximum value of SAR (measured) = 13.5 mW/g

Body/5200MHz,Pin=100mW,d= 2/Zoom Scan (8x8x9)/Cube 0: Measurement grid: dx=4mm, dy=4mm, dz=2.5mm

Reference Value = 54.1 V/m; Power Drift = -0.084 dB

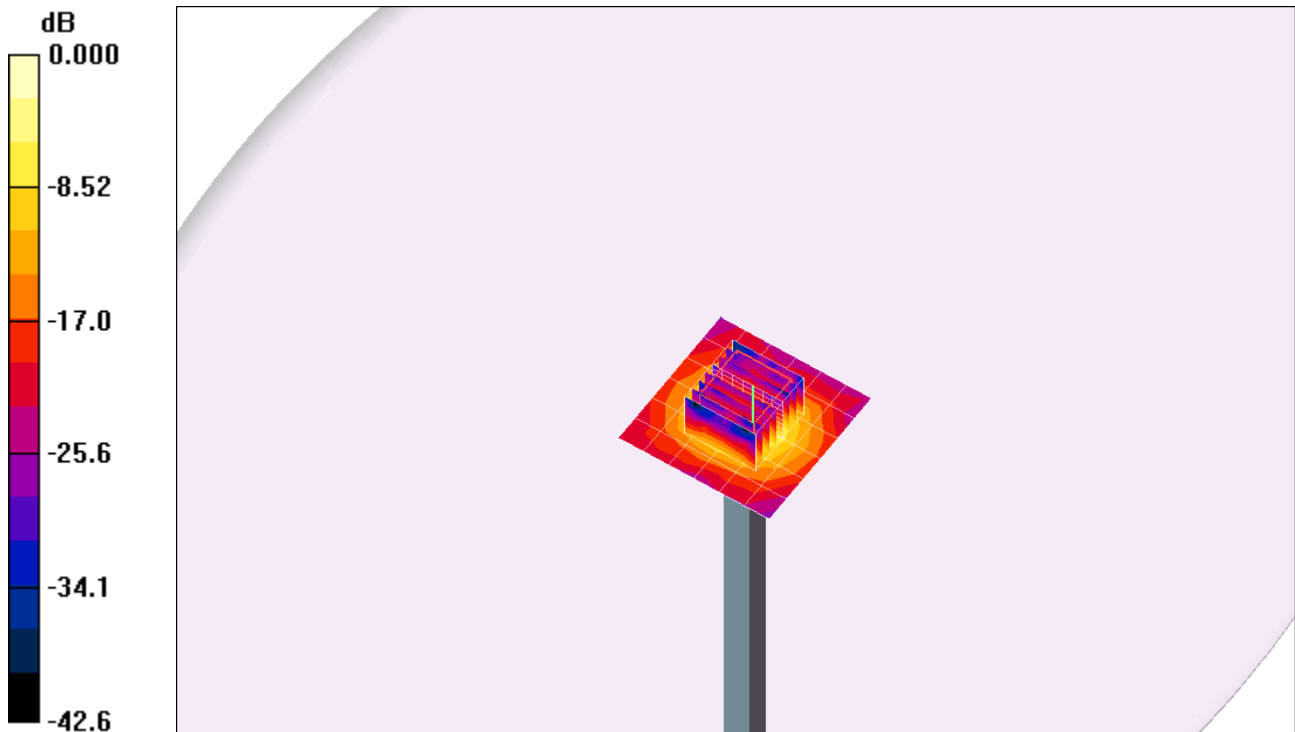
Peak SAR (extrapolated) = 26.9 W/kg

Peak SAR (extrapolated) = 26.9 W/kg

SAR(1 g) = 7.41 mW/g; SAR(10 g) = 2.08 mW/g

[Info: Interpolated medium parameters used for SAR evaluation.](#)

Maximum value of SAR (measured) = 12.7 mW/g



0 dB = 12.7mW/g

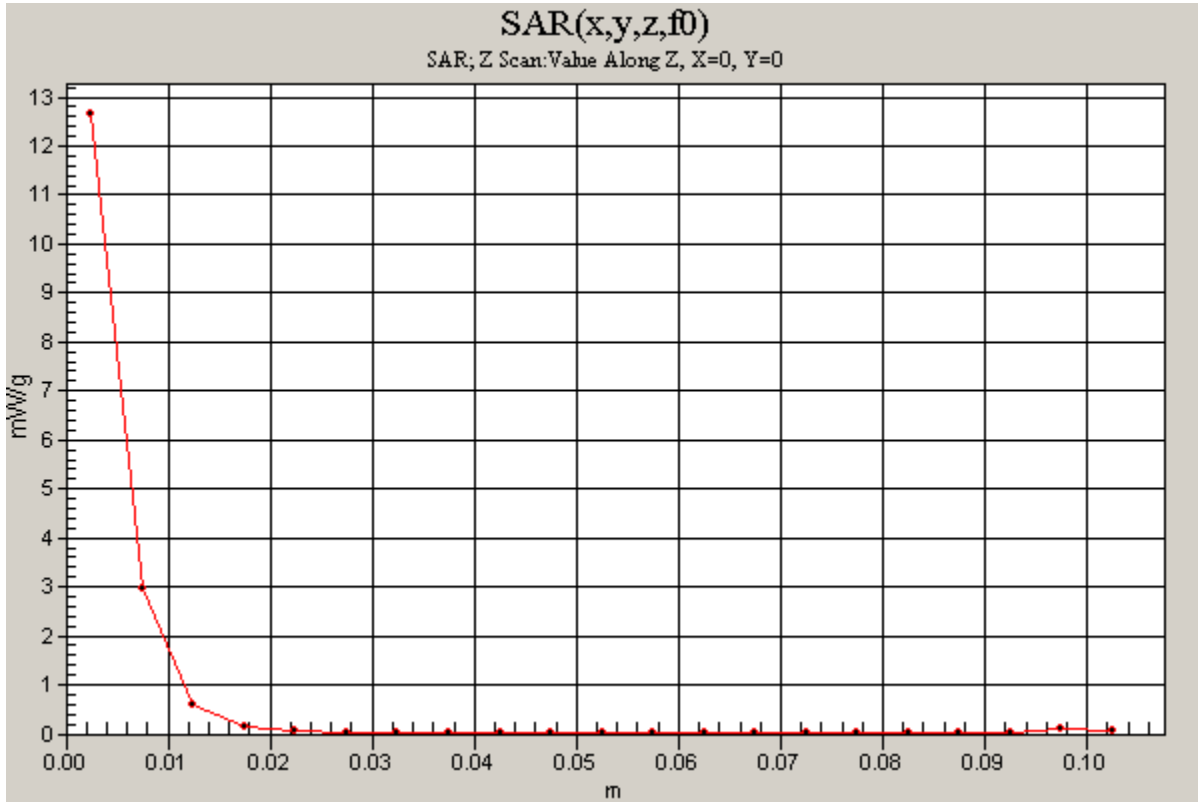
20160603_System check_Diple5GHzv2 SN1004

Frequency: 5200 MHz; Duty Cycle: 1:1

Body/5200MHz,Pin=100mW,d= 2/Z Scan (1x1x21): Measurement grid: dx=20mm, dy=20mm, dz=5mm

Info: [Interpolated medium parameters used for SAR evaluation.](#)

Maximum value of SAR (measured) = 12.7 mW/g



20160603_System check_Diple5GHzv2 SN1004

Frequency: 5300 MHz; Duty Cycle: 1:1; Room Ambient Temperature: 25.0°C; Liquid Temperature: 24.0°C

Medium parameters used: $f = 5300.2$ MHz; $\sigma = 5.45$ mho/m; $\epsilon_r = 48.3$; $\rho = 1000$ kg/m³ ;

DASY4 Configuration:

- Area Scan setting - Find Secondary Maximum Within: 2.0 dB and with a peak SAR value greater than 0.0012W/kg
- Electronics: DAE4 Sn558; Calibrated: 7/16/2015
- Probe: EX3DV4 - SN3554; ConvF(3.66, 3.66, 3.66); Calibrated: 10/1/2015
- Sensor-Surface: 2.5mm (Mechanical Surface Detection (Locations From Previous Scan Used))Sensor-Surface: 2.5mm (Mechanical Surface Detection)
- Phantom: Flat Phantom ELI4.0; Type: QDOVA001BA; Serial: SN: 1052

Body/5300MHz,Pin=100mW,d= 2/Area Scan (7x7x1): Measurement grid: dx=10mm, dy=10mm

Maximum value of SAR (measured) = 13.0 mW/g

Body/5300MHz,Pin=100mW,d= 2/Zoom Scan (8x8x9)/Cube 0: Measurement grid: dx=4mm,

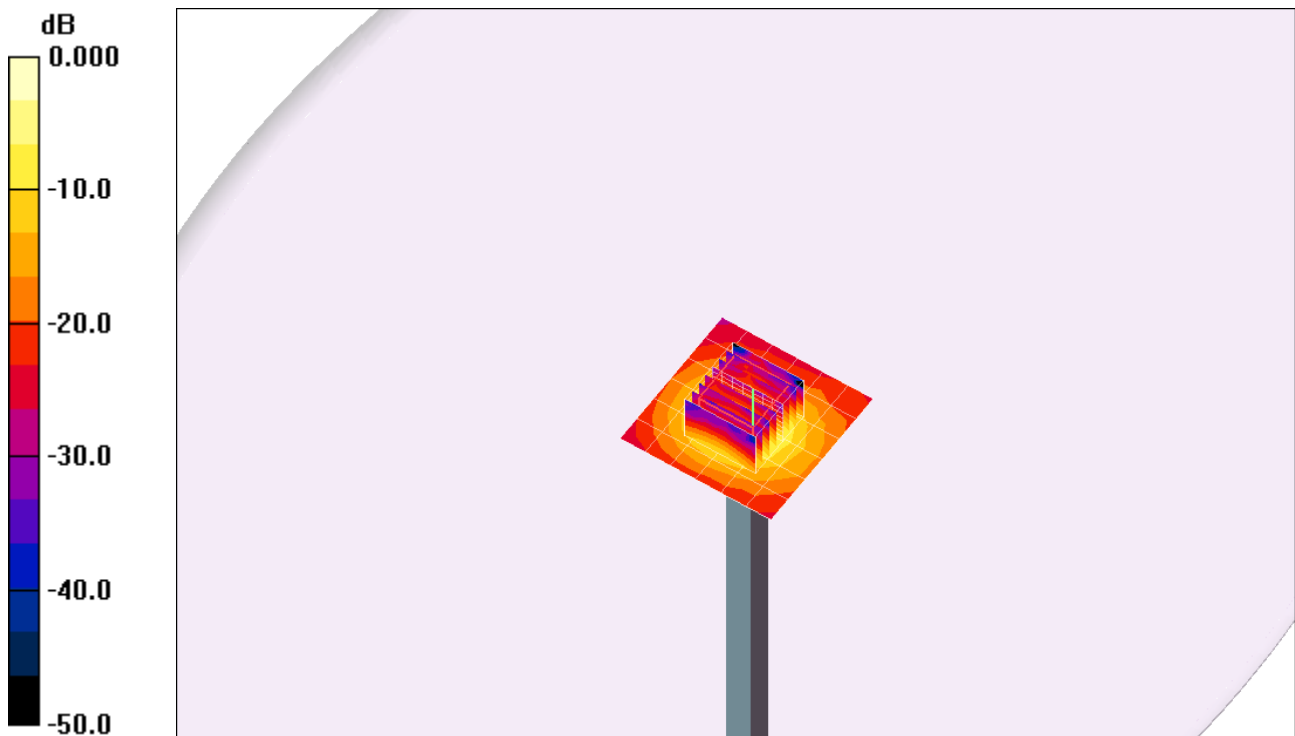
dy=4mm, dz=2.5mm

Reference Value = 52.2 V/m; Power Drift = 0.010 dB

Peak SAR (extrapolated) = 29.0 W/kg

SAR(1 g) = 7.74 mW/g; SAR(10 g) = 2.17 mW/g

Maximum value of SAR (measured) = 13.5 mW/g

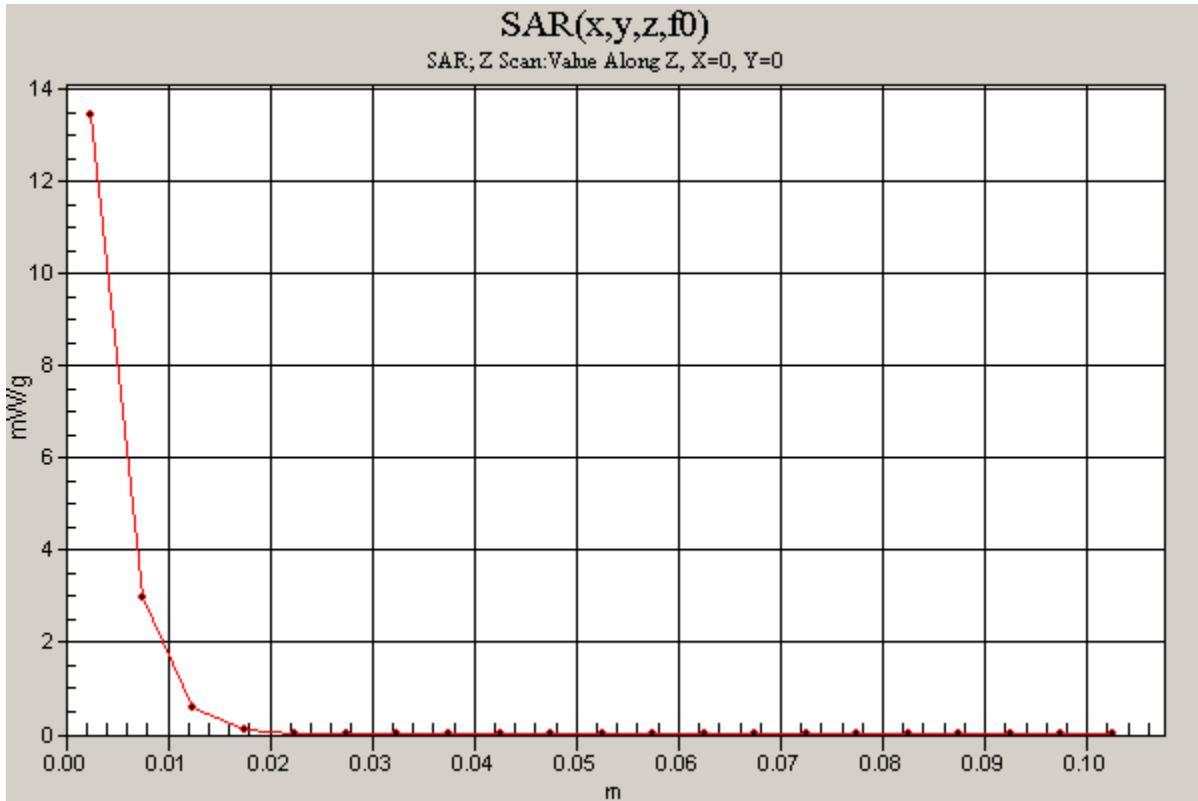


0 dB = 13.5mW/g

20160603_System check_Diple5GHzv2 SN1004

Frequency: 5300 MHz; Duty Cycle: 1:1

Body/5300MHz,Pin=100mW,d= 2/Z Scan (1x1x21): Measurement grid: dx=20mm, dy=20mm, dz=5mm
Maximum value of SAR (measured) = 13.5 mW/g



20160603_System check_Diple5GHzv2 SN1004

Frequency: 5600 MHz; Duty Cycle: 1:1; Room Ambient Temperature: 25.0°C; Liquid Temperature: 24.0°C

Medium parameters used: $f = 5600.5$ MHz; $\sigma = 5.91$ mho/m; $\epsilon_r = 47.7$; $\rho = 1000$ kg/m³ ;

DASY4 Configuration:

- Area Scan setting - Find Secondary Maximum Within: 2.0 dB and with a peak SAR value greater than 0.0012W/kg
- Electronics: DAE4 Sn558; Calibrated: 7/16/2015
- Probe: EX3DV4 - SN3554; ConvF(3.17, 3.17, 3.17); Calibrated: 10/1/2015
- Sensor-Surface: 2.5mm (Mechanical Surface Detection (Locations From Previous Scan Used))Sensor-Surface: 2.5mm (Mechanical Surface Detection)
- Phantom: Flat Phantom ELI4.0; Type: QDOVA001BA; Serial: SN: 1052

Body/5600MHz,Pin=100mW,d= 2/Area Scan (7x7x1): Measurement grid: dx=10mm, dy=10mm

Maximum value of SAR (measured) = 13.4 mW/g

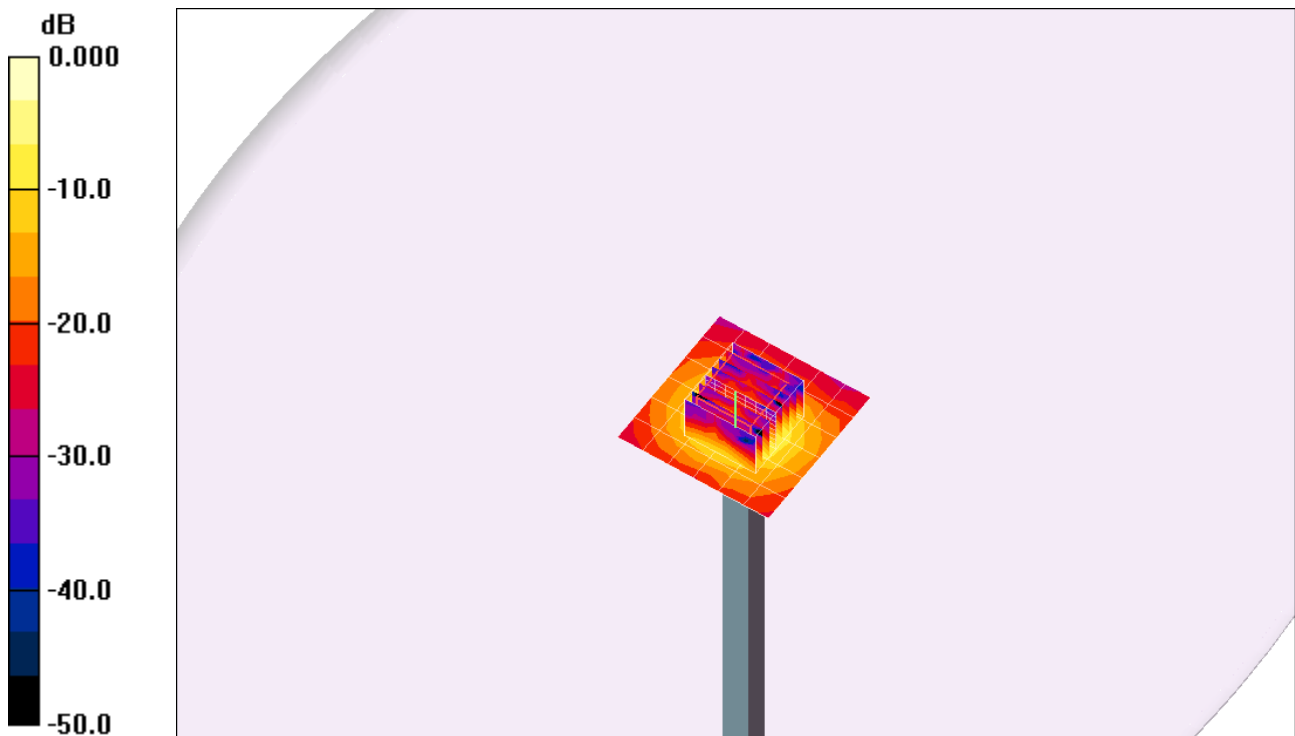
Body/5600MHz,Pin=100mW,d= 2/Zoom Scan (8x8x9)/Cube 0: Measurement grid: dx=4mm, dy=4mm, dz=2.5mm

Reference Value = 51.2 V/m; Power Drift = 0.000 dB

Peak SAR (extrapolated) = 31.5 W/kg

SAR(1 g) = 8.15 mW/g; SAR(10 g) = 2.26 mW/g

Maximum value of SAR (measured) = 14.1 mW/g

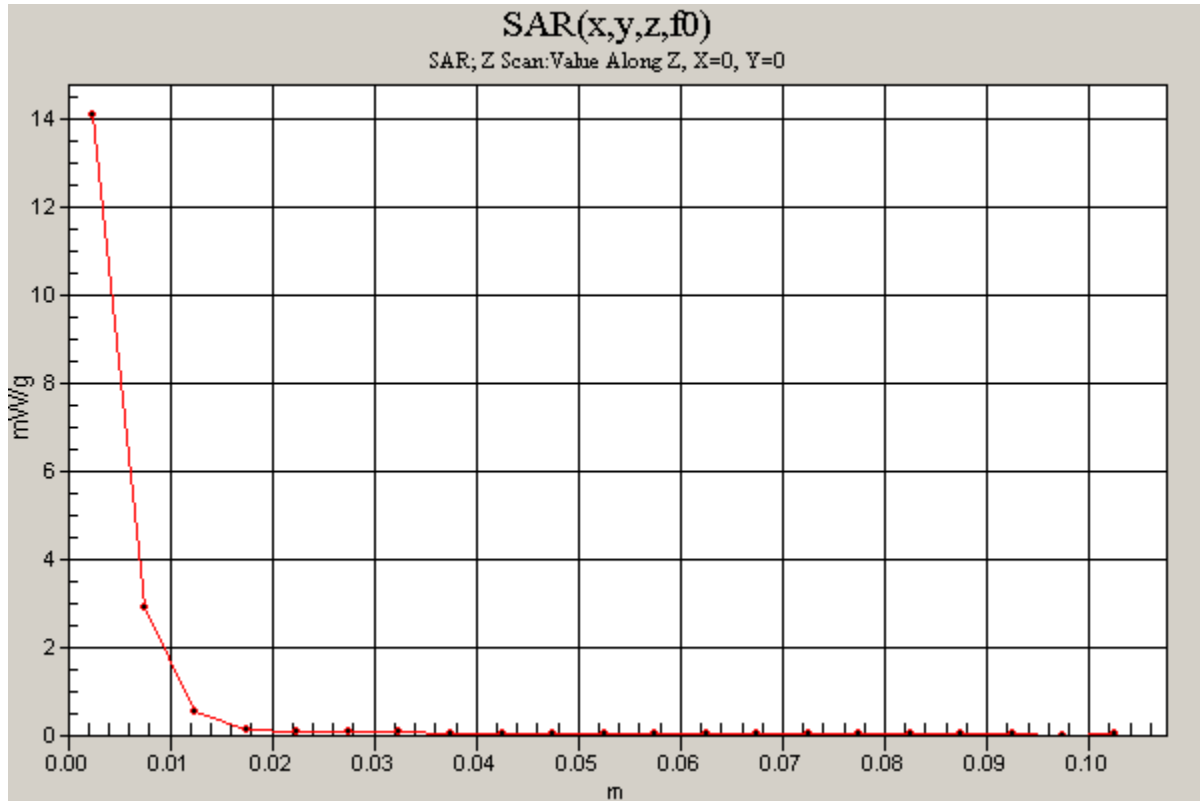


0 dB = 14.1mW/g

20160603_System check_Diple5GHzv2 SN1004

Frequency: 5600 MHz; Duty Cycle: 1:1

Body/5600MHz,Pin=100mW,d= 2/Z Scan (1x1x21): Measurement grid: dx=20mm, dy=20mm, dz=5mm
Maximum value of SAR (measured) = 14.1 mW/g



20160603_System check_Diple5GHzv2 SN1004

Frequency: 5800 MHz; Duty Cycle: 1:1; Room Ambient Temperature: 25.0°C; Liquid Temperature: 24.0°C

Medium parameters used (interpolated): $f = 5800$ MHz; $\sigma = 6.15$ mho/m; $\epsilon_r = 47.3$; $\rho = 1000$ kg/m³ ;

DASY4 Configuration:

- Area Scan setting - Find Secondary Maximum Within: 2.0 dB and with a peak SAR value greater than 0.0012W/kg
- Electronics: DAE4 Sn558; Calibrated: 7/16/2015
- Probe: EX3DV4 - SN3554; ConvF(3.37, 3.37, 3.37); Calibrated: 10/1/2015
- Sensor-Surface: 2.5mm (Mechanical Surface Detection (Locations From Previous Scan Used))Sensor-Surface: 2.5mm (Mechanical Surface Detection)
- Phantom: Flat Phantom ELI4.0; Type: QDOVA001BA; Serial: SN: 1052

Body/5800MHz,Pin=100mW,d= 2/Area Scan (7x7x1): Measurement grid: dx=10mm, dy=10mm

[Info: Interpolated medium parameters used for SAR evaluation.](#)

Maximum value of SAR (measured) = 13.1 mW/g

Body/5800MHz,Pin=100mW,d= 2/Zoom Scan (8x8x9)/Cube 0: Measurement grid: dx=4mm,

dy=4mm, dz=2.5mm

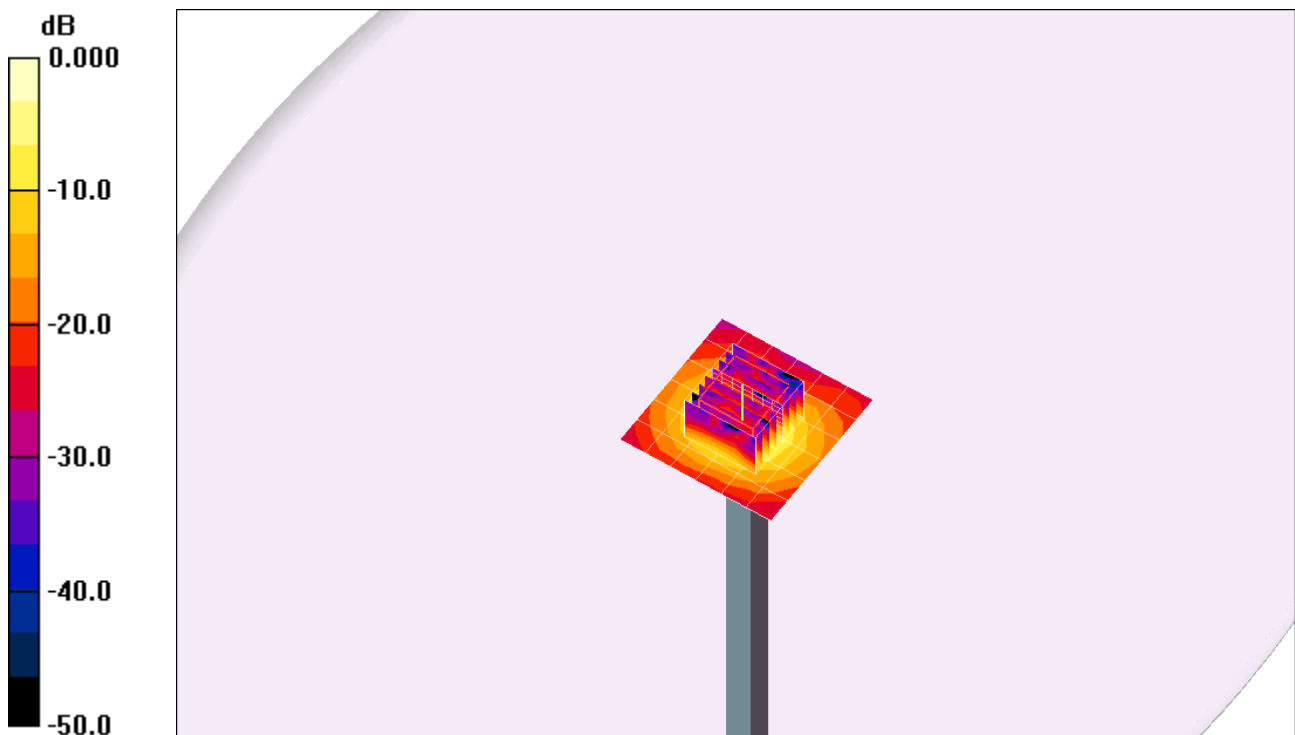
Reference Value = 49.7 V/m; Power Drift = -0.008 dB

Peak SAR (extrapolated) = 30.7 W/kg

SAR(1 g) = 7.66 mW/g; SAR(10 g) = 2.14 mW/g

[Info: Interpolated medium parameters used for SAR evaluation.](#)

Maximum value of SAR (measured) = 13.3 mW/g



0 dB = 13.3mW/g

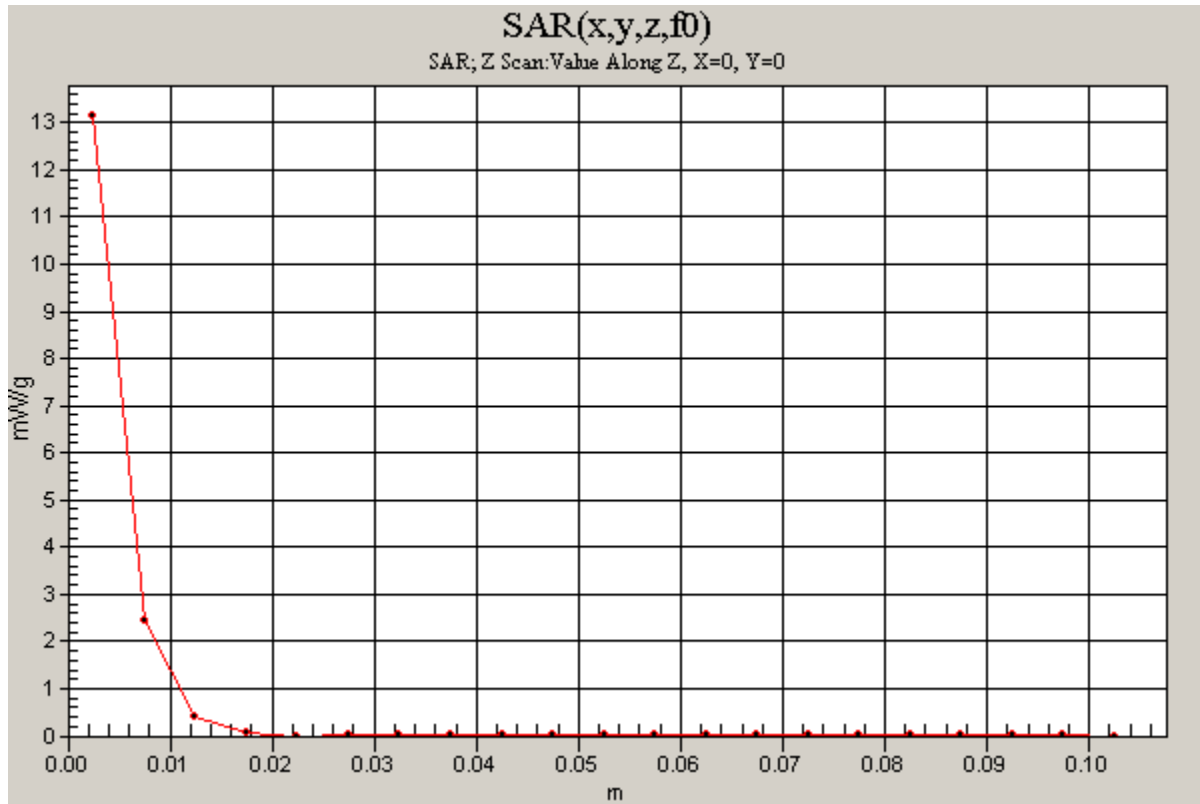
20160603_System check_Diple5GHzv2 SN1004

Frequency: 5800 MHz; Duty Cycle: 1:1

Body/5800MHz,Pin=100mW,d= 2/Z Scan (1x1x21): Measurement grid: dx=20mm, dy=20mm, dz=5mm

Info: [Interpolated medium parameters used for SAR evaluation.](#)

Maximum value of SAR (measured) = 13.1 mW/g



20160604_System Check_Dipole2450 sn869

Frequency: 2450 MHz; Duty Cycle: 1:1; Room Ambient Temperature: 24.0°C; Liquid Temperature: 23.0°C

Medium parameters used (interpolated): $f = 2450$ MHz; $\sigma = 1.9$ mho/m; $\epsilon_r = 50.2$; $\rho = 1000$ kg/m³ ;

DASY4 Configuration:

- Area Scan setting - Find Secondary Maximum Within: 2.0 dB and with a peak SAR value greater than 0.0012W/kg
- Electronics: DAE4 Sn558; Calibrated: 7/16/2015
- Probe: EX3DV4 - SN3554; ConvF(6.1, 6.1, 6.1); Calibrated: 10/1/2015
- Sensor-Surface: 2mm (Mechanical Surface Detection)
- Phantom: Flat Phantom ELI4.0; Type: QDOVA001BA; Serial: SN: 1052

Body/Pin=100mW, d=10mm/Area Scan (8x9x1): Measurement grid: dx=15mm, dy=15mm

[Info: Interpolated medium parameters used for SAR evaluation.](#)

Maximum value of SAR (measured) = 5.08 mW/g

Body/Pin=100mW, d=10mm/Zoom Scan (7x7x7)/Cube 0: Measurement grid: dx=5mm, dy=5mm, dz=5mm

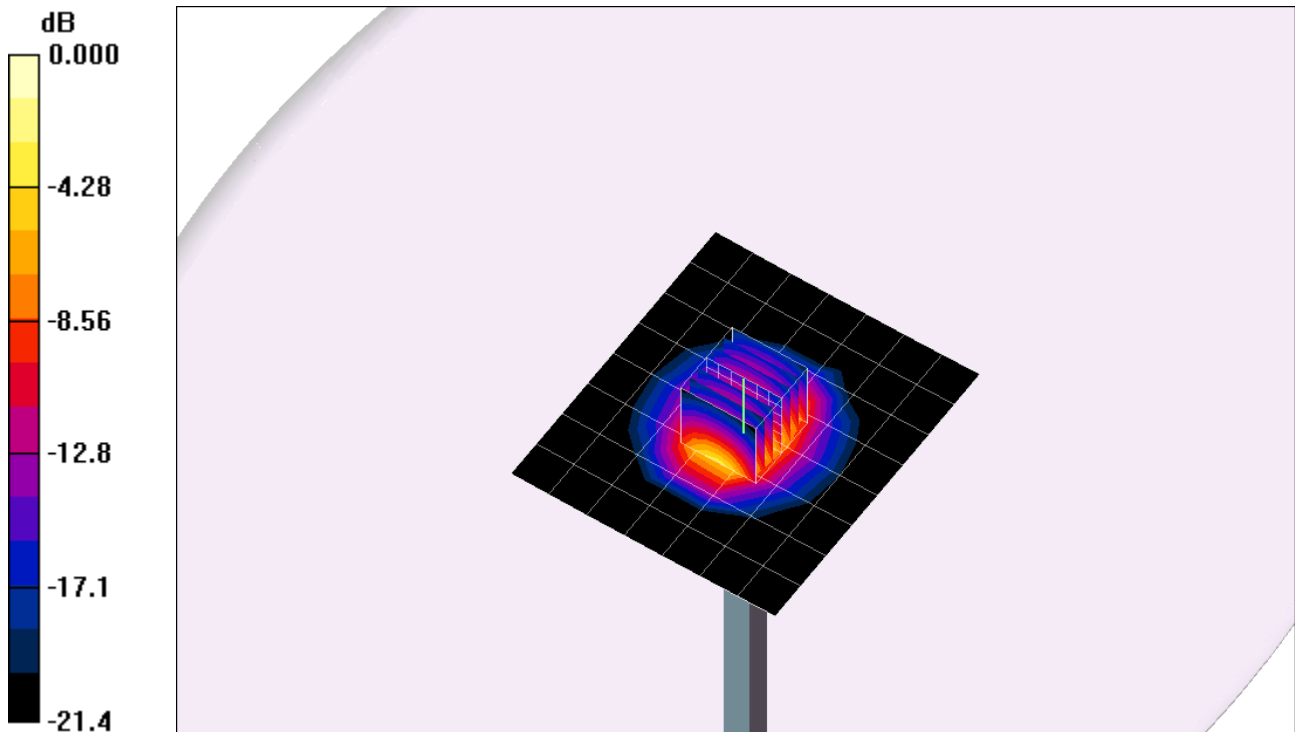
Reference Value = 65.9 V/m; Power Drift = -0.090 dB

Peak SAR (extrapolated) = 10.3 W/kg

SAR(1 g) = 5.2 mW/g; SAR(10 g) = 2.46 mW/g

[Info: Interpolated medium parameters used for SAR evaluation.](#)

Maximum value of SAR (measured) = 7.68 mW/g



0 dB = 7.68mW/g

20160604_System Check_Dipole2450 sn869

Frequency: 2450 MHz; Duty Cycle: 1:1

Body/Pin=100mW, d=10mm/Z Scan (1x1x21): Measurement grid: dx=20mm, dy=20mm, dz=5mm

[Info: Interpolated medium parameters used for SAR evaluation.](#)

Maximum value of SAR (measured) = 7.74 mW/g

