

COMPLETE SETUP AND PROGRAMMING MANUAL FOR XT610/XTX610/XTO610 GPRS PANELS



A Videofied CMA601 / XMB611(June 2011) Alphanumeric Keypad or Frontel TMT2 is required for programming and maintenance



CMA601



XMB611

Table of Contents

	Page
FCC Guidelines_____	3
Basic Guidelines_____	4
Introduction_____	5
Initial Programming_____	6-14
Entering Badges and Access Codes_____	15
Choosing Siren Options_____	16
Testing to Central Station_____	17
Disabling Monitoring _____	18
Testing GPRS Level_____	19
Testing Device RF Level_____	20
Connecting a GPRS Antenna_____	21
Arming Input Wiring Diagram_____	21
Programmable Input Configuration_____	22-24
Programmable Output Configuration_____	25-27
Configuring Scheduling_____	28-30
Enabling External RF Antenna_____	31
Mounting XT/XTX_____	32
Mounting XTO_____	32-33
Troubleshooting_____	34-36
Central Station not getting Video_____	34
Central Station not getting any signals_____	35
Panel saying Connected with Monitor Station_____	35
Unable to record device or getting 'Pairing Failure' error_____	36
After Initial Programming Flow Chart_____	36-41
Addendum_____	42

Regulatory Information for USA and Canada

FCC Part 15.21 *Changes or modifications made to this equipment not expressly approved by RSI Video Technologies may void the FCC authorization to operate this equipment.*

FCC Part 15.105 Class B

This equipment has been tested and found to comply with the limits for a Class B digital device, pursuant to Part 15 of the FCC Rules. These limits are designed to provide reasonable protection against harmful interference in a residential installation. This equipment generates uses and can radiate radio frequency energy and, if not installed and used in accordance with the instructions, may cause harmful interference to radio communications. However, there is no guarantee that interference will not occur in a particular installation. If this equipment does cause harmful interference to radio or television reception, which can be determined by turning the equipment off and on, the user is encouraged to try to correct the interference by one or more of the following measures:

- *Reorient or relocate the receiving antenna.*
- *Increase the separation between the equipment and receiver.*
- *Connect the equipment into an outlet on a circuit different from that to which the receiver is connected.*
- *Consult the dealer or an experienced radio/TV technician for help.*

Radiofrequency radiation exposure information according 2.1091 / 2.1093 / OET bulletin 65

This equipment complies with FCC radiation exposure limits set forth for an uncontrolled environment. This equipment should be installed and operated with minimum distance of 20 cm between the radiator and your body.

This transmitter must not be co-located or operating in conjunction with any other antenna or transmitter.

This device complies with Part 15 of the FCC Rules and with RSS-210 of Industry Canada.

Operation is subject to the following two conditions:

- (1) this device may not cause harmful interference, and*
- (2) this device must accept any interference received, including interference that may cause undesired operation.*

Basic Setup Guidelines for Installation and Programming

SETUP AND PROGRAM

- 1) Obtain the account number, IP address, and port number from the Central Station.
- 2) Activate the SIM card and obtain the APN code, username, and password by calling your cellular provider.
**Note: Do step 1 and 2 the day before the install.*
- 3) Setup and program the system in the office or in your vehicle. **DO NOT MOUNT THE DEVICES.** (Page 4-12)
- 4) Add user codes and or badges after initial programming. (Page 13)
- 5) Silence the siren before you set the alarm for testing. (Page 15)
- 6) Arm the system and send one alarm signal and video to the central station. Call the central station and make sure they received the signal. (Page 16)

**Note : Before deploying the system you will want to disable monitoring so that signals are not sent until you are ready to send them. (Page 14)*

DEPLOYING THE SYSTEM ON SITE

- 7) Put the panel where you want to mount it and run the GPRS test to make sure you are receiving good cell signal. If you get 3/5 or better, mount the panel. If not, you will need to move the panel and run the test again.* (page 17)
- 8) Now you are ready to deploy the devices. Use your keypad to run the RF test for each device. If you get a 9/9 for your RF test on the first device, then mount it. If not, you will need to move the device to get optimal signal.* (Page 18)

**Note: If you are not getting an appropriate GPRS or RF level, you can add an external antenna for either signal. (Not available for the XL600)*

**Note: Re-enable monitoring before you send signals (Page 14)*

8.5) If you are currently using TMT Installer to program the system you can take still pictures from each MotionViewer using the software. See TMT Installer Users Manual available on support.videofied.com.

- 9) Once you have everything mounted, you are ready to arm the system and set off each device. Make sure you stand in front of each MotionViewer for 10 seconds so the central station has some video to look at. (Page 16)
- 10) After you have sent signals to central station, call to verify.

The following pages will go through each one of these steps and, if you have any issues, you cannot resolve, please feel free to call technical support at 1-651-855-7800 EXT 45, 1-877-206-5800 EXT 45 or you can reach live support chat and additional technical notes at support.videofied.com.

Sleeping mode and Wake-up on the CMA601:

Most of the time, the keypad is in a sleeping mode (backlight off). This mode is automatic after 30 seconds of inactivity. When you press a button the keypad wakes up. The first touch on the pad that wakes it up will not be a registered command and will only wake up the keypad.

Introduction:

Description:

The XT series control panel is a Videofied wireless, battery operated hybrid alarm system. It is designed for residential, small business and commercial security applications. The XT provides integrated Video Verification over GPRS.

The XT has programmable inputs and outputs. XT also features mapping where an external input can be used to generate a video clip from a MotionViewer.

Internal RF range and GPRS range can be enhanced using external antennas.

Supervised Wireless Technology:

The XT, along with all Videofied devices, uses the patented S2View® - Spread Spectrum, Videofied, Interactive, AES Encrypted Wireless technology, providing optimum signal integrity and security.

The bi-directional RF communication path between all devices and the system control panel guarantees high signal reliability. Integrated antennas eliminate protruding wires or rods, which are difficult to install, unsightly to consumers and potentially troublesome if damaged.

The panel supervises every device (excluding the remote key fob) to validate current open/close state, tamper condition, serial number, date of manufacture, firmware revision, and battery status.

In order for an installation to be UL compliant you must follow the specifications in the table below:

Type	Specifications	Location In Manual
Audio	When a MotionViewer is installed on the system you may not have the siren sound for less than 60 seconds	Page 26
Audio	If no MotionViewer is installed on the system you may not have the siren sound for less than 240 seconds	Page 26
Delays	When a MotionViewer is installed on the system the Entry delay must be 45 seconds	Page 9

SETUP MANUAL FOR XT SERIES GPRS PANEL

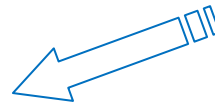
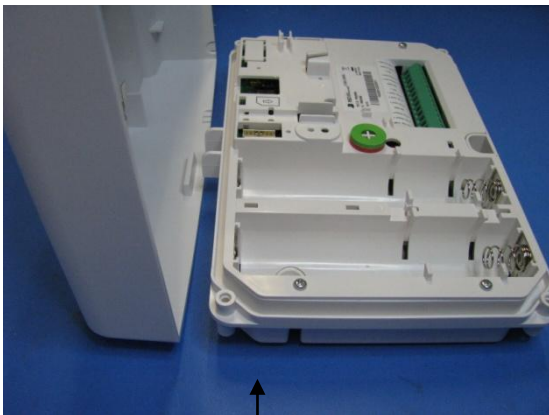
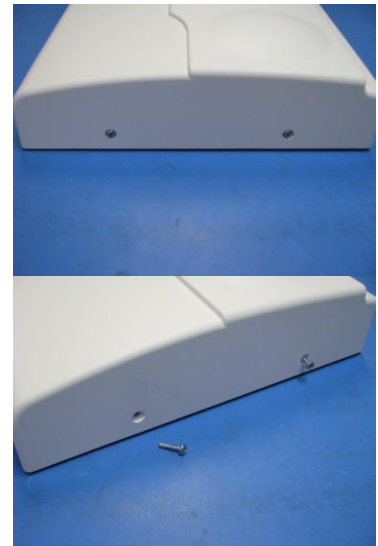
THIS SYSTEM REQUIRES A CMA601/XMB611 or TMT INSTALLER SOFTWARE FOR PROGRAMMING

XT Initial Programming



Open the Control Panel

Using a #1 Phillips screwdriver, remove the 2 screws holding the cover on.

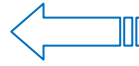
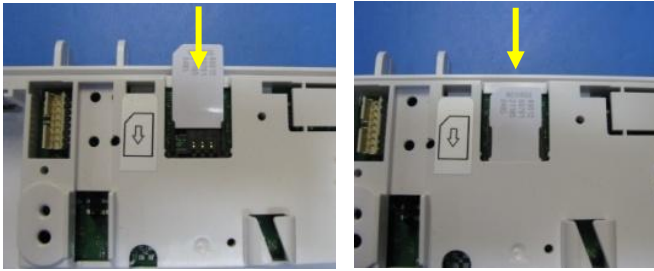


The cover will fold off the panel like a book with the curved side acting like the binding. The same technique is used when placing the cover back onto the unit.



When removing the XTO cover, pull straight off, do not slide it.

The SIM card must NOT be inserted or removed while the panel is powered



Install the SIM card
 Slide SIM card into the slot.
 Make sure it is aligned correctly.

Powering the Panel

****THE CONTROL PANEL MUST BE CONNECTED TO AN EXTERNAL POWER SUPPLY WHEN SMS FEATURE IS ACTIVE****

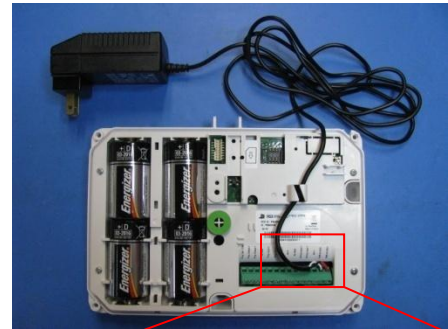
Option 1: PP1	Option 2
4 x LSH20 SAFT Lithium D-Cell Used for Standalone or Xtender mode without Programmable Inputs, Programmable Outputs, or SMS LSH20 Specifications: Operating Temp: -76°F to +230°F Storage Temp: Dry, Ventilated, 86°F Max	4 x E95VP Alkaline D-Cell + 12v 2amp DC Class 2 power supply (not supplied) Used for Standalone or Xtender mode where Programmable Inputs/Mapping, Programmable Outputs, or SMS will be used E95VP Specifications: Operating Temp: 0°F to 130°F



LSH20 Technical Specifications	
Nominal Voltage	3.6 V
Open Circuit Voltage	3.67 V
Nominal Capacity	9.3 Ah

E95VP Technical Specifications	
Nominal Capacity	8900 mA hours
Nominal Voltage	1.5 V

Power Supply Requirements	
Output Voltage (volts)	12
Output Current (mA)	2000
Certifications	Class 2 (For UL Compliance)



WARNINGS:

1. DO NOT USE ALKALINE BATTERIES IF INSTALLING AN XTX/XTO GPRS BELOW 30° F, YOU MUST USE OPTION 1: PP1.
2. DO NOT INSTALL A TRANSFORMER WHEN USING OPTION 1 (LITHIUM BATTERIES).

Obtaining XMB Keypad Special Characters

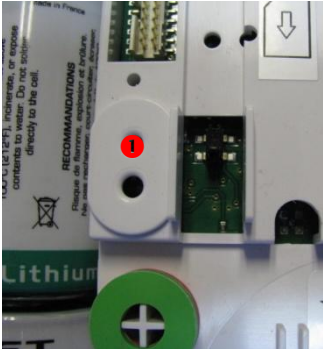
Keys	1 st Press	2 nd Press	3 rd Press	4 th Press	5 th Press	6 th Press	7 th Press	8 th Press	9 th Press	10 th Press	11 th Press	12 th Press	13 th Press	14 th Press
1	'Space'	1	.	_	@	\$,	'	?	!	;	:	"	N/A
0	+	0	-	*	#	=	/	%	&	¥	<	>	()

Obtaining CMA Keypad Special Characters

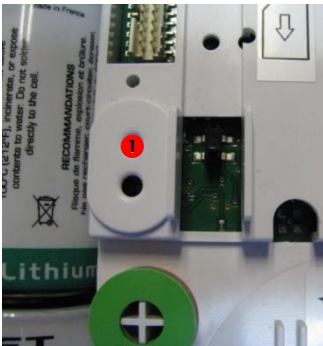
Key	1 st press	2 nd press	3 rd press	4 th press	5 th press	6 th press	7 th press	8 th press	9 th press	10 th press	11 th press
1	"space"	.	.	'	?	!	:	:	#	1	
0	-	+	=	/	¥	_	<	>	()	0
@	@	\$	%	&	*	#					

XT Programming

Reset the XT Panel:
Press and hold programming button (1) for 10sec until the Indicator LED blinks twice



Press and instantly release the programming button (1).
The indicator LED will blink once. The panel is now in 'Learn Mode' for the CMA601 keypad.



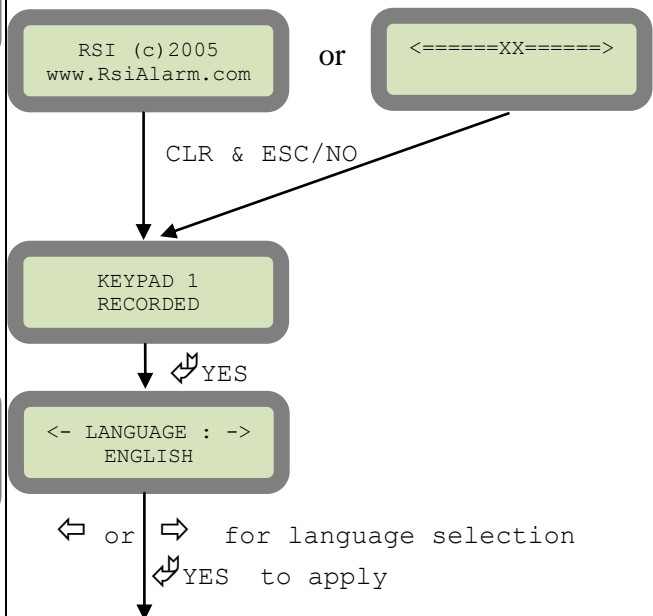
Insert all three batteries into the CMA601 and press both the ESC/NO and CLR keys at the same time and release. The indicator LED on the keypad will blink rapidly.

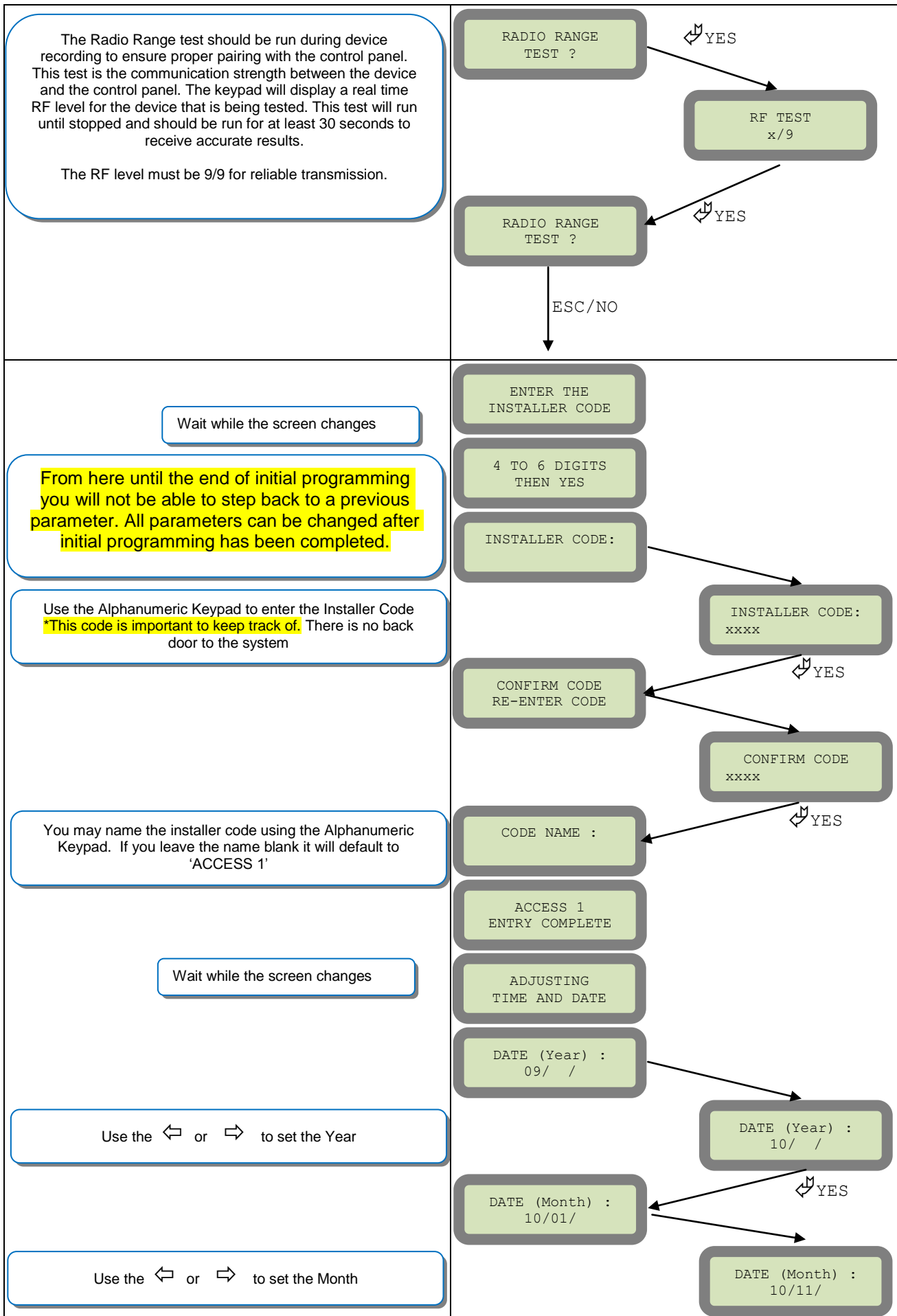


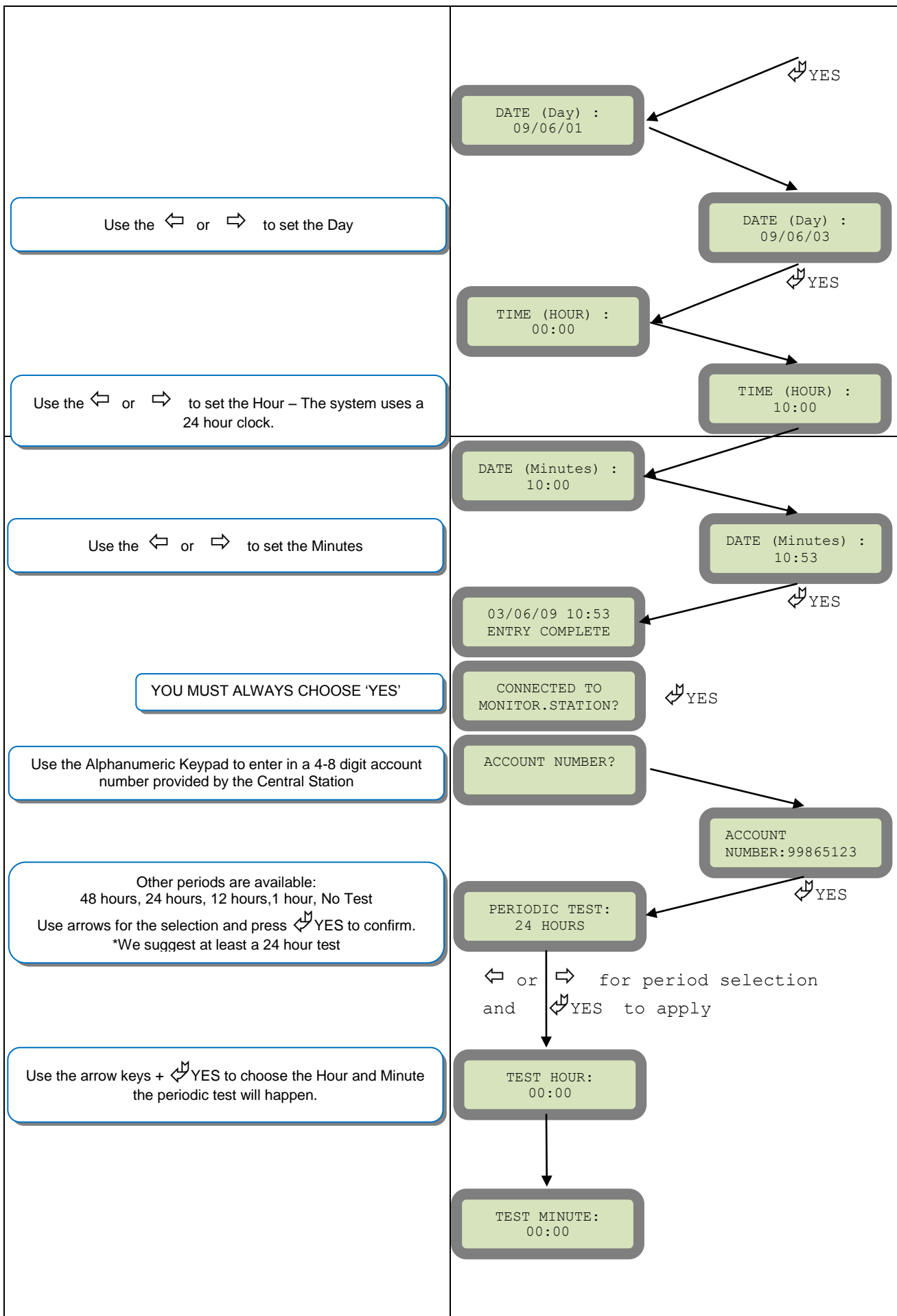
Other languages are available by scrolling with arrows.
ITALIANO, NEDERLANDS, DEUTSCH, CASTELLANO,
SVENSKA, PORTUGUES, FRANCAIS
Press YES for the selected one.

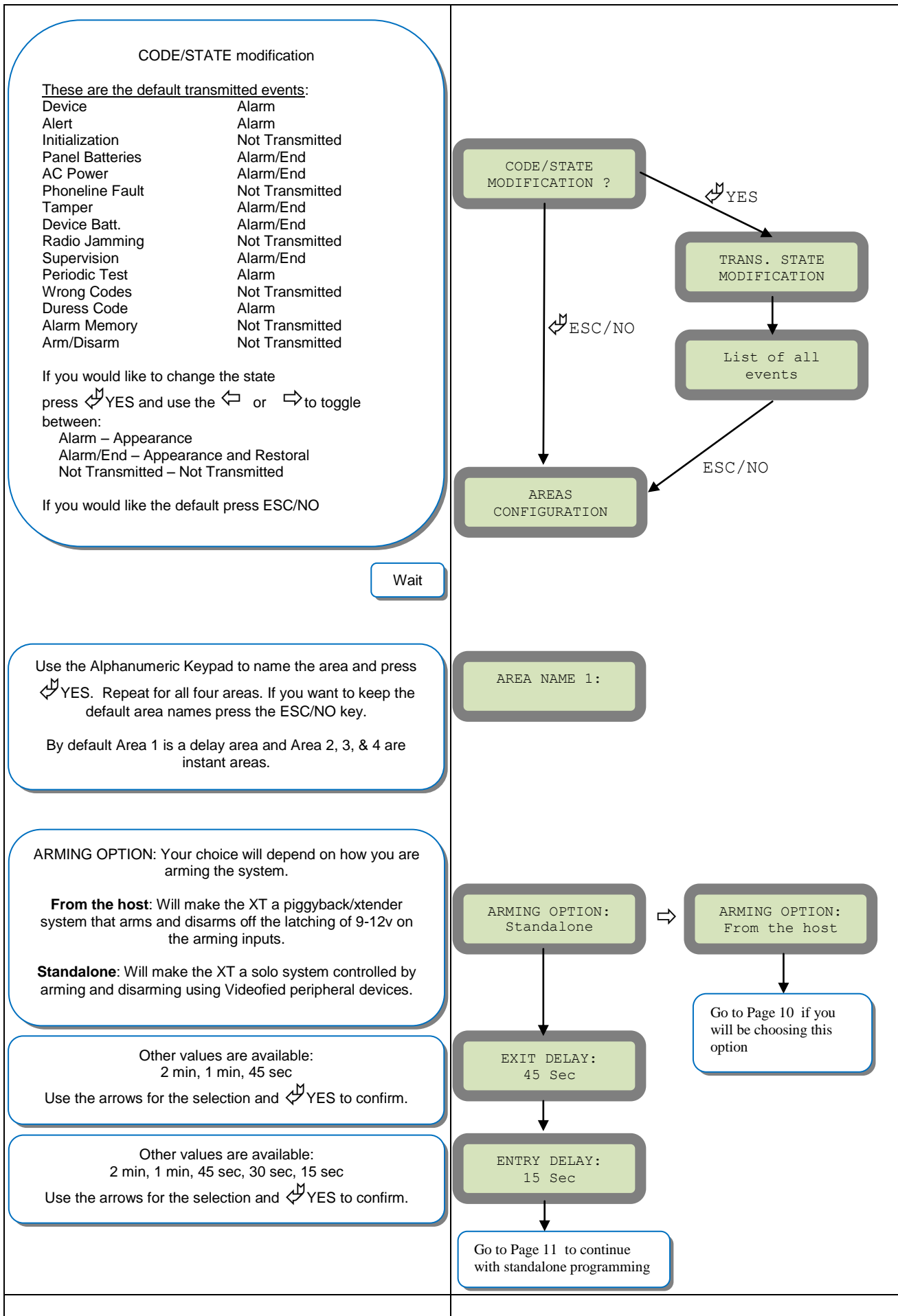
*Note: If you are having issues pairing the keypad to the panel, please refer to the troubleshooting section.

CMA Programming Device/Keypad









Using the control panel as a Xtender system will only be able to arm and disarm by latching 9-12v to one of the two inputs.

Arming input 1 will control the arming and disarming of devices in areas 1 and 2. Where devices in area 1 are subject to the Entry Delay.

Arming input 2 will control the arming and disarming of devices in areas 3 and 4. Where devices in area 3 are subject to the Entry Delay.

Mode Slow : Used for following the arming and disarming of the host system. This will arm each device one at a time conserving battery life.

Mode Fast : Used to instant arm all devices while sacrificing battery life.

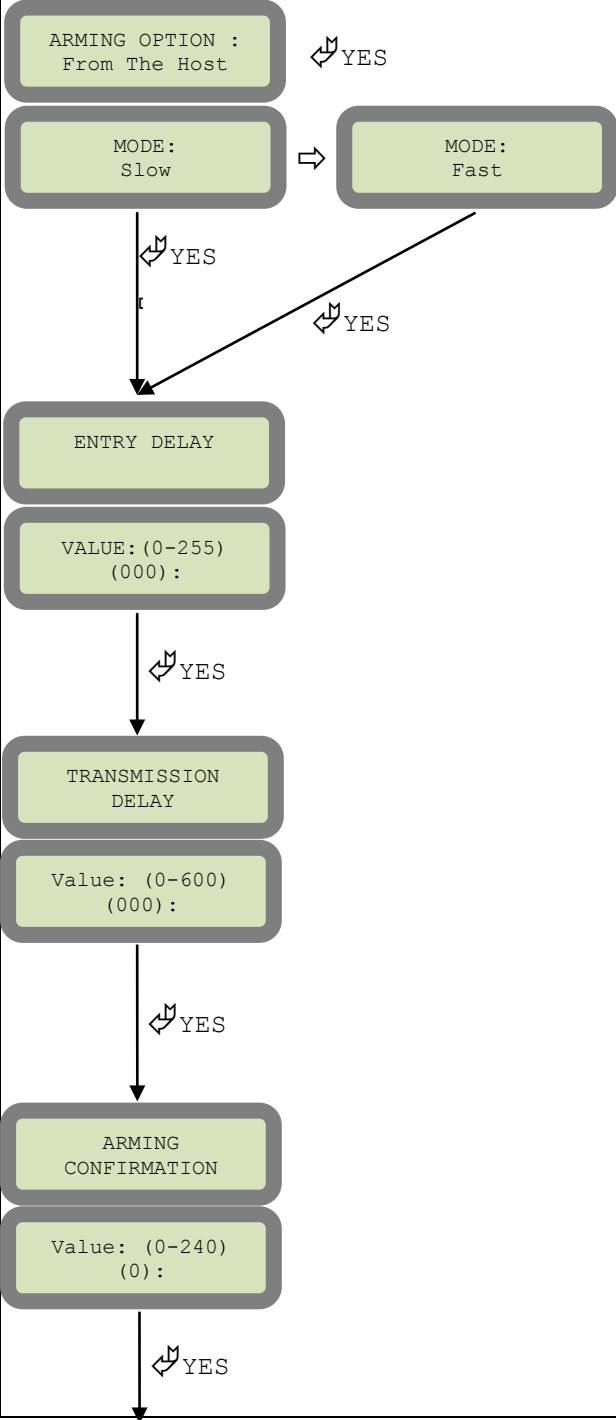
Enter the value for your Entry Delay up to 255 seconds and press YES .

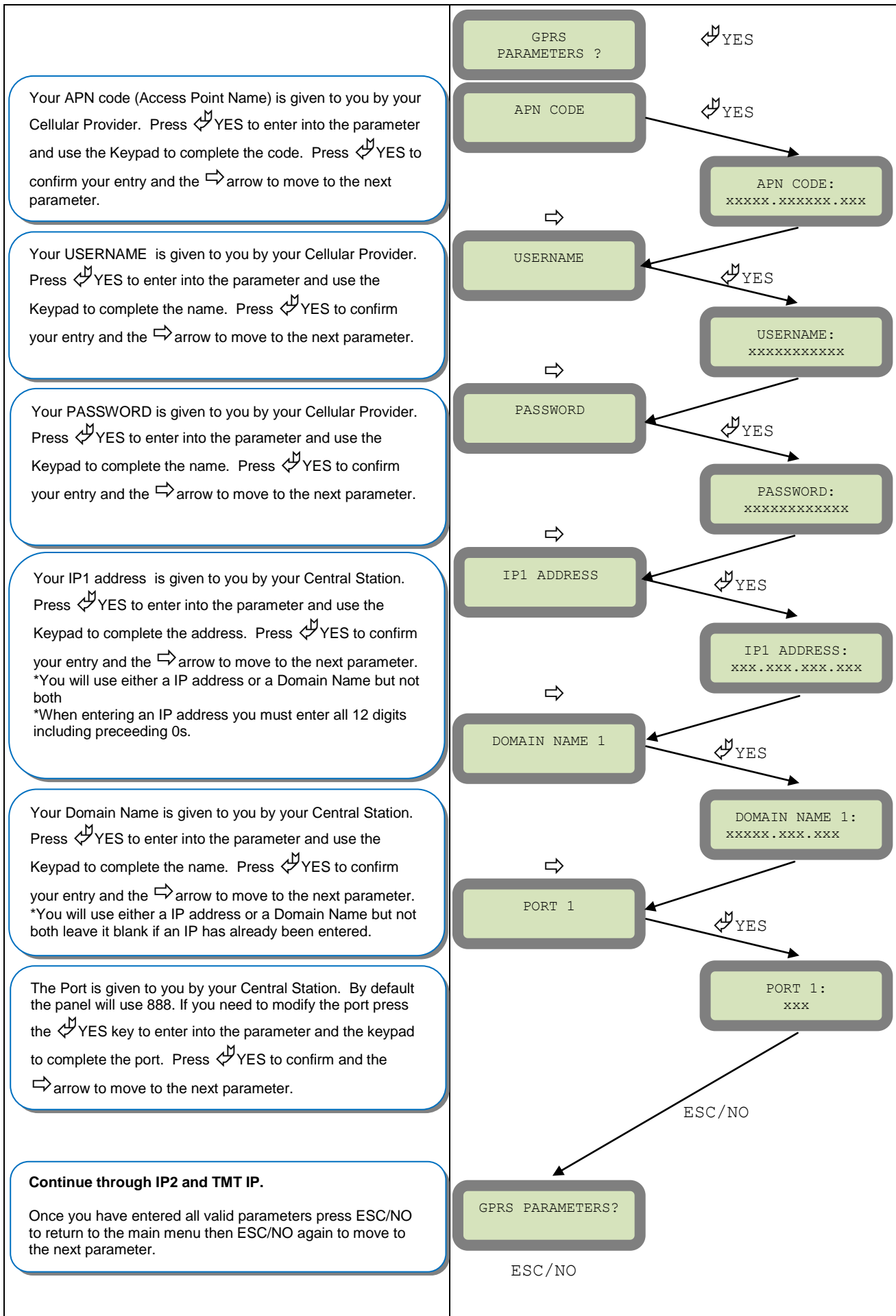
By entering a value using the keypad, up to 600 seconds, the transmission of any event will be delayed that many seconds.

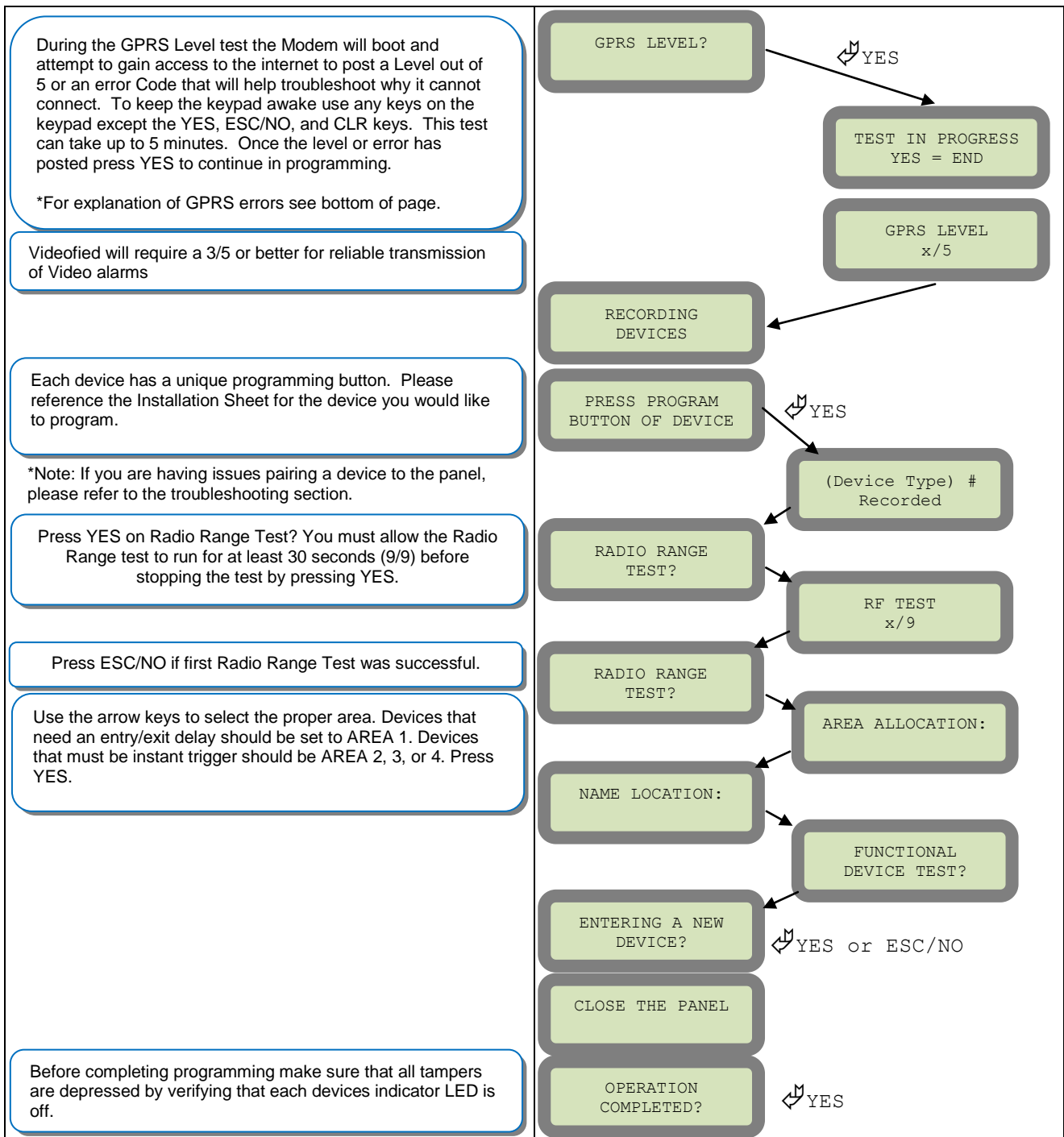
Enter the value you would like for the Transmission Delay and press YES

Arming Confirmation is the number of seconds of latched voltage (where voltage must stayed latched after) the panel will require before arming. This will be considered your exit delay.

Enter the value you would like for the Arming Confirmation and press YES







Other XT setup with CMA600 keypad (Standalone ONLY)

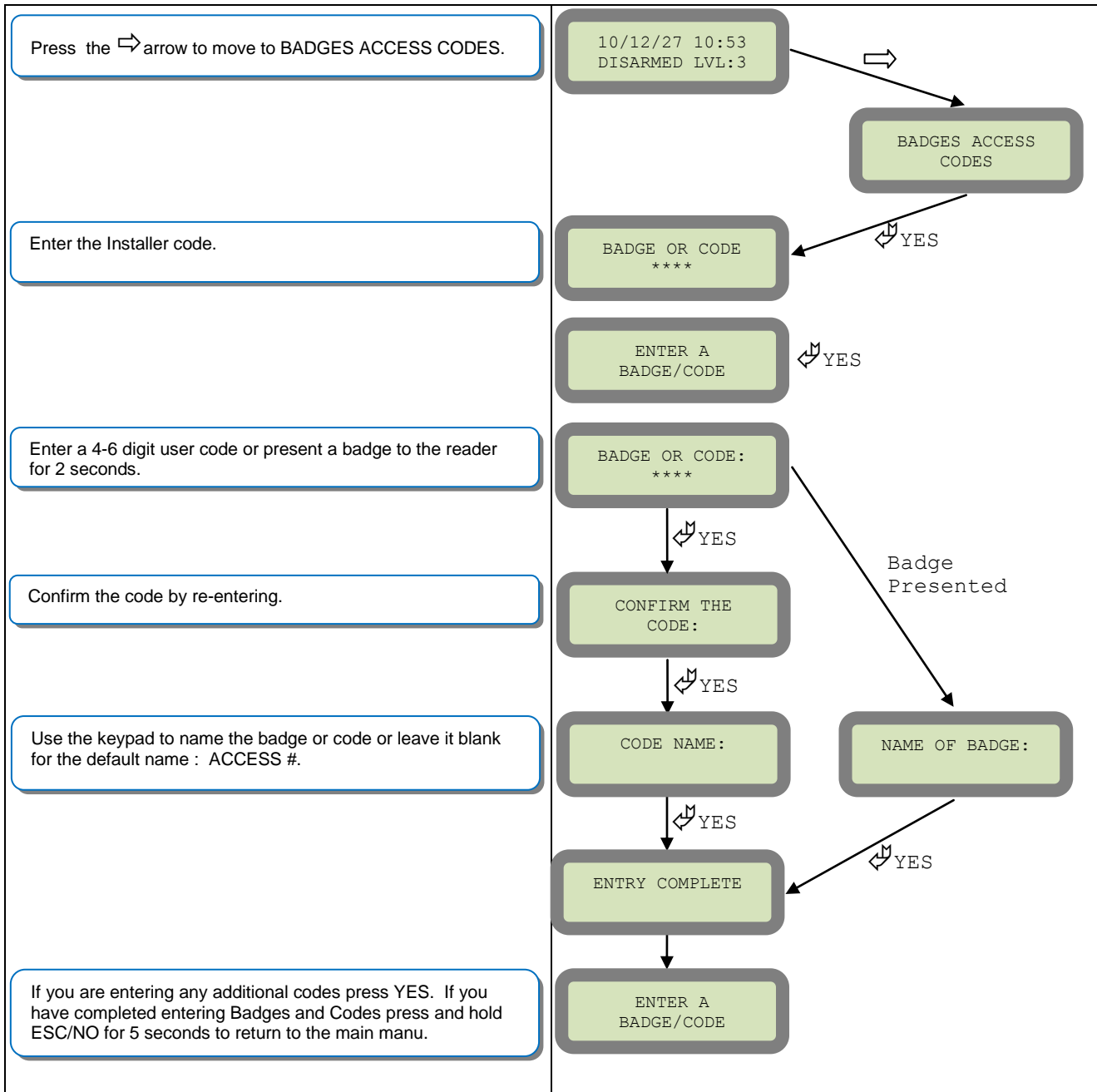
Other setup (badges/codes, arming profiles, etc...) must be set with the CMA keypad

GPRS error codes

Codes	Error
010	SIM card not detected/not inserted
043	Provisioning problem, contact cellular provider
047	Typographical error in APN Code, IP Address, or Port
132	SIM card not activated
255	Cannot connect to cell tower

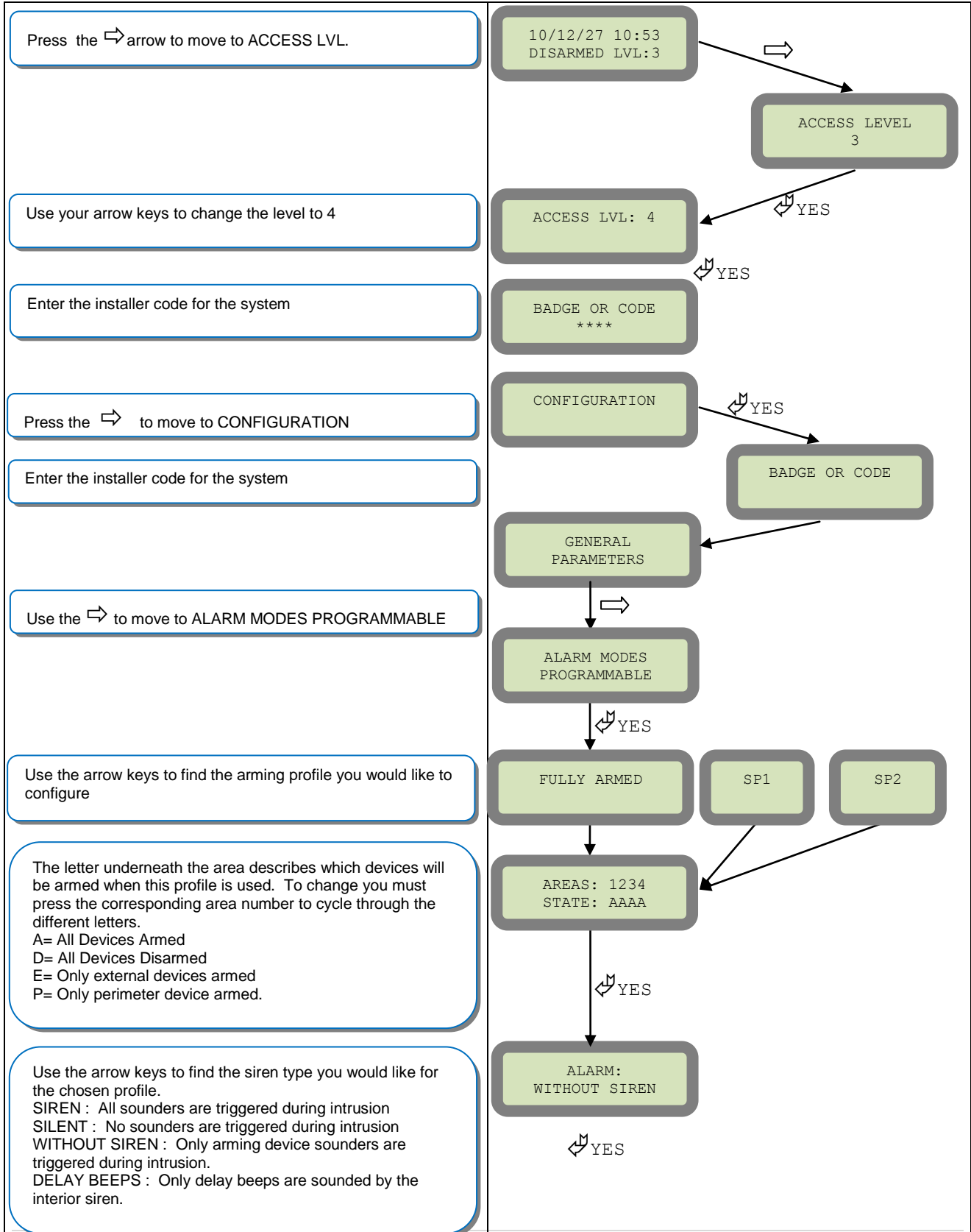
Entering a Badge or Access Code for Arming/Disarming

After Initial programming has been completed, you are not able to arm and disarm the system until you enter a user code or badge (the installer code cannot arm and disarm the system). Codes can be 4-6 digits and the 4th digit must be 2 values higher or lower than any other code on the system: Example: User code 1234, next code cannot be 1235, 1236, 1233, or 1232 – These are reserved for Silent Duress and Audible Duress. The XT system can accept up to 19 Badges or Access codes in any combination.



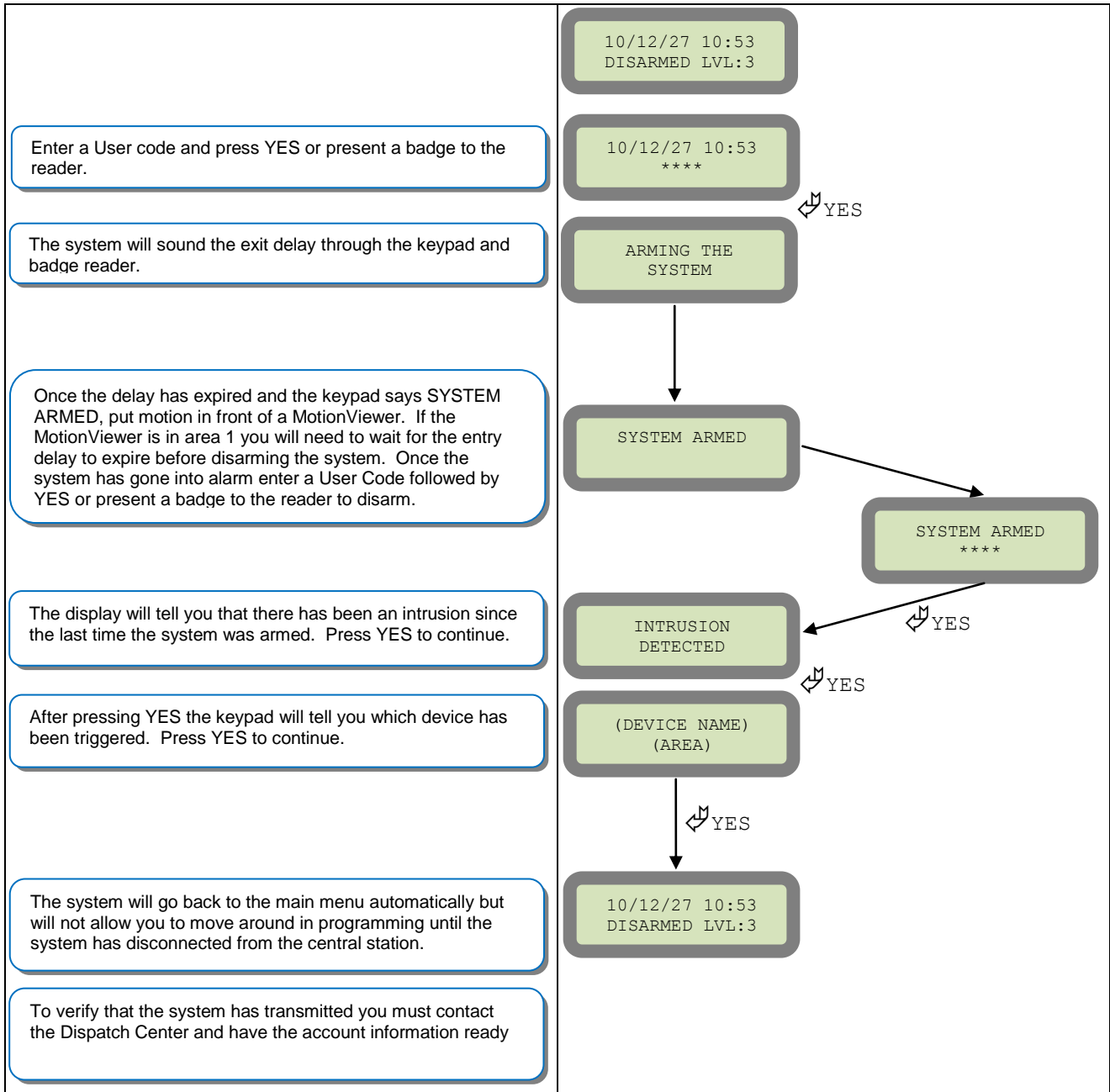
Changing Siren Options

After initial programming has been completed any sounder on the system will be enabled by default, this includes the sounder on the Keypad and Badge Reader. While there is no way to disable the sounding of the exit delay you are able to disable the intrusion sound.



How to test to the dispatch center

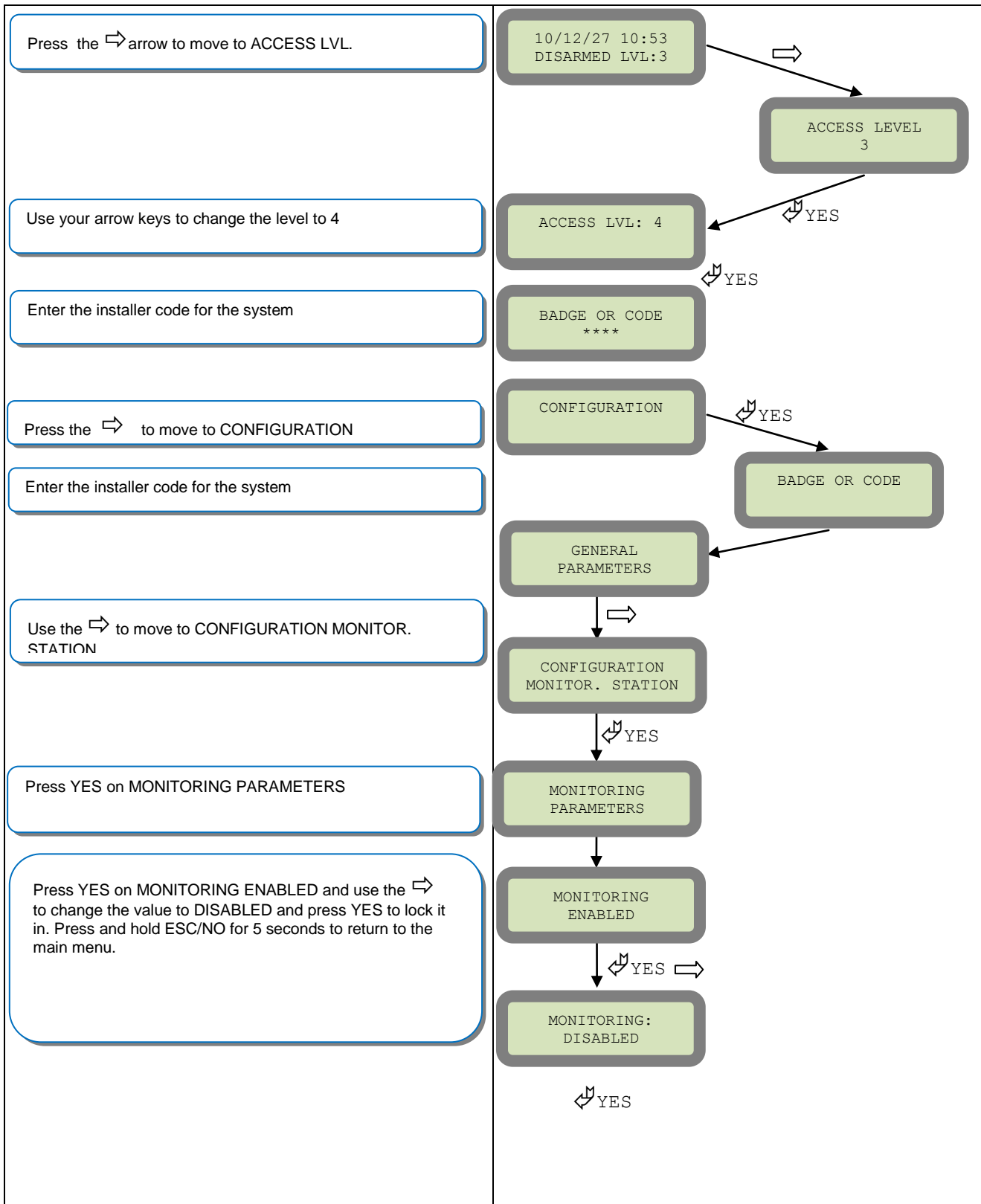
Testing to the dispatch is done twice during installation. Once while you are programming the system and then again once the installation has been completely finished. Although both will use the same steps the initial test will be just confirmation using one device to verify the programming.



Note: Send 1 MotionViewer in at a time and verify with Central Station that they are getting Alarm and Video before tripping another MotionViewer. This will save time with the Central Station.

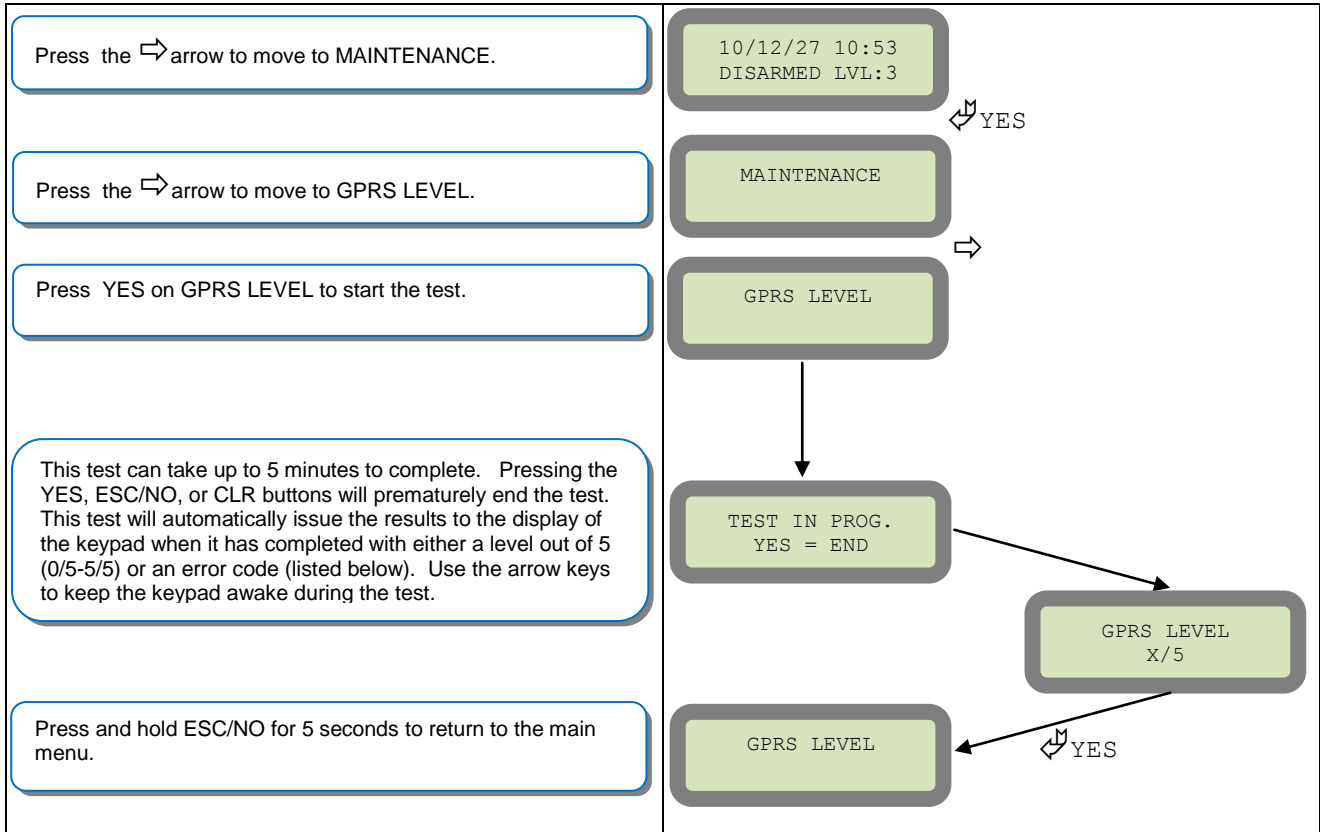
How to Disable Monitoring

Disabling monitoring can be a useful tool in many situations. Before mounting devices and moving the panel to find a good GPRS level, disabling monitoring will ensure that you will have access to programming and that unnecessary signals are not sent to the monitoring station. When performing maintenance on the system disabling monitoring until the issue has been resolved will ensure that you will have access to programming throughout your troubleshooting.



How to test GPRS for deployment of panel

Before the system is mounted you will need to check the GPRS level to make sure it is adequate. If the level is 3/5 or better you can mount the control panel in that location.



GPRS Errors when running GPRS LEVEL

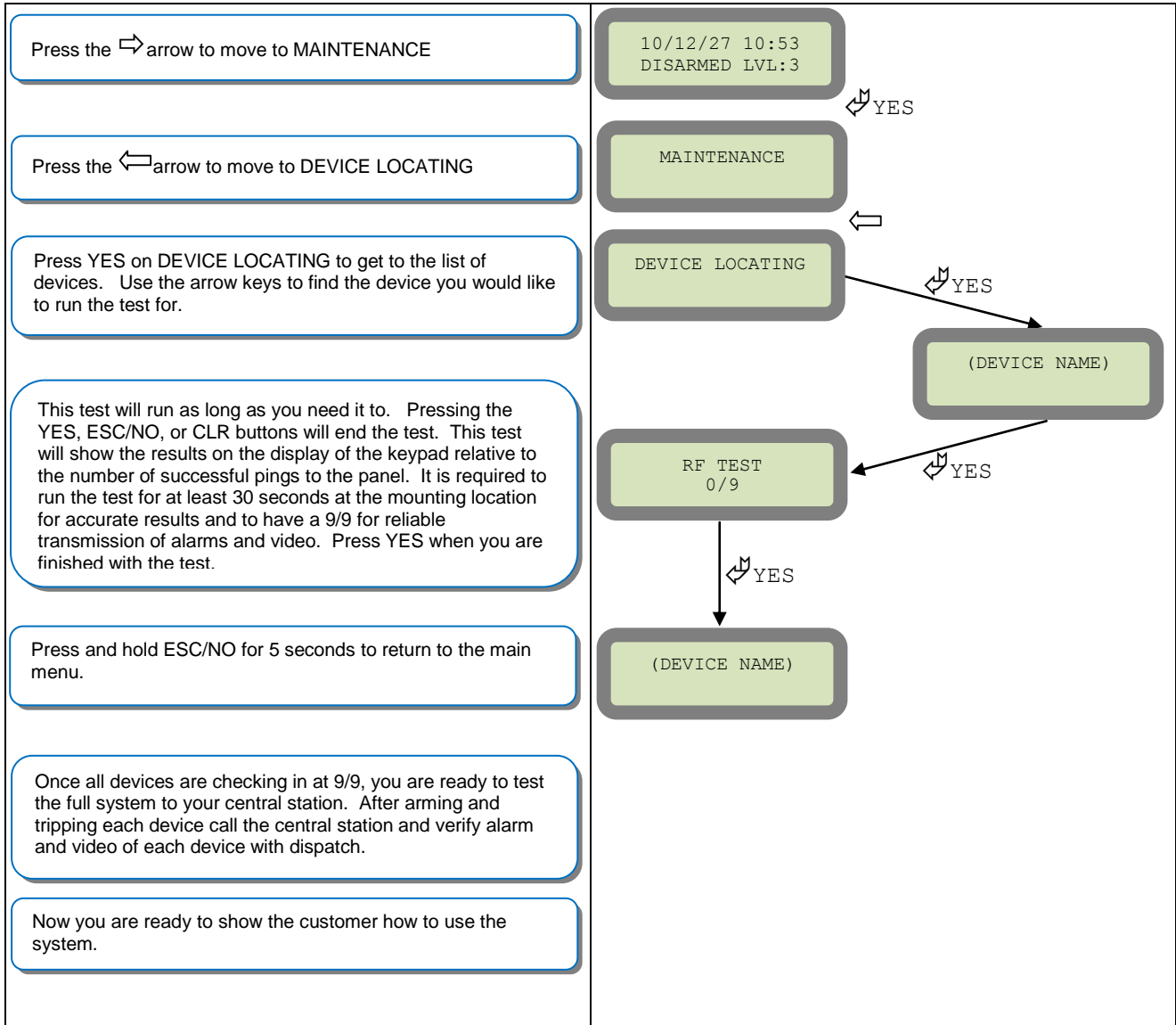
Codes	Error
010	SIM card not detected/not inserted
043	Provisioning problem, contact cellular provider
132	SIM card not activated
255	Cannot connect to cell tower

GPRS Codes in Event Log

Codes	Error
256	Cannot connect to cell tower
11	SIM not ready if multiples, SIM not detect if only one
48	Signal rejected by host, IP, Domain Name, or Port are incorrect

How to test RF for deployment of devices

Running the RF test during the mounting of devices is key to a successful Videofied installation. This test will ensure that all devices have adequate communication with the control panel. All Videofied devices are bi-directional which allows the system to ping the device and expect a response. The number of successful responses out of 9 will be displayed on the keypad for the device you are running the test for. This is also a relative range that will change in real time as you walk further away from the control panel and back closer.

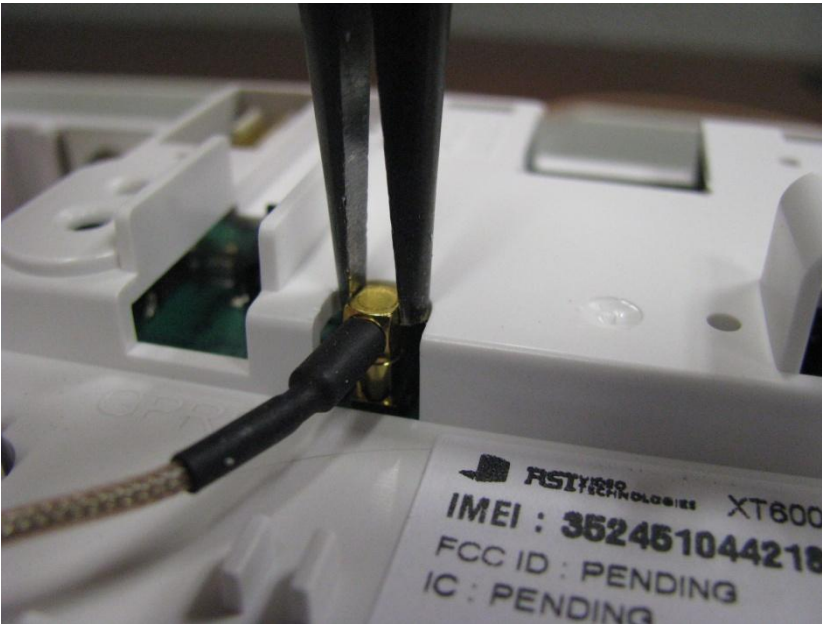


NOTE: To insure proper operation of the system you must get 9/9 with each device before mounting.

GPRS Antenna Connection

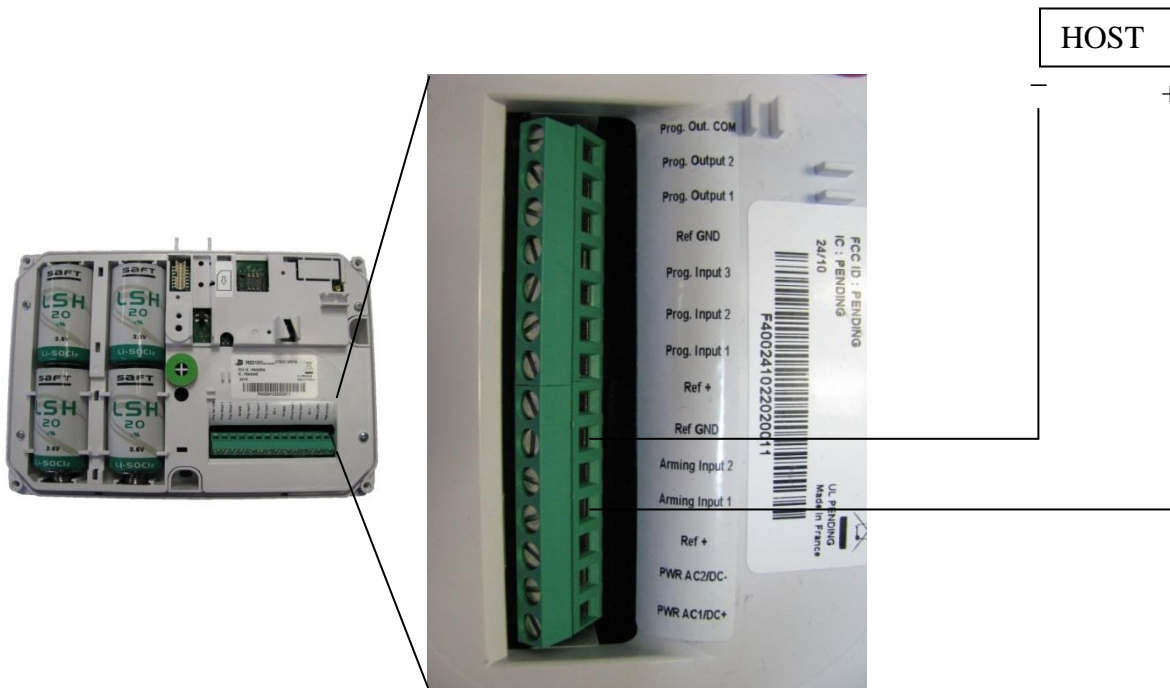
! WARNING !

Use caution before removing antenna connection. Damaged antenna connector is NOT covered under warranty.



Using needle nose pliers, be sure to only grab the connector and pull directly up

Arming Input Wiring Diagram



When in Arm From Host mode the Videofied system will only arm and disarm when 9-12v is supplied and sustained.

Arming Input 1 will arm/disarm Areas 1 & 2
 Arming Input 2 will arm/disarm Areas 3 & 4

General Programmable Input Configuration



General Configuration - Programmable Inputs

PRODUCT APPLICATION NOTE

Manufactured by RSI Video Technologies

January 2011

The RSI Video Technologies XT600 series control panels can accept up to 3 hard wired peripheral devices. These devices can be normally opened or closed, wet or dry.

YOU CAN ONLY USE THE INPUTS WITH ALKALINE + POWER SUPPLY

The inputs can be programmed to have unique identification name and transmit one of the standard events used by Videofied. With these capabilities you are able to perform a takeover of an existing alarm system or add in needed devices for the job that Videofied may not manufacture.

Programmable inputs 1, 2, and 3 are triggered by voltage between 9V and 15V and an intensity between 1.5mA (29V) and 3mA (@15v). If a dry contact is used to trigger the programmable inputs the REF+ output can be used to supply this dry contact.

During transmission of the programmable inputs alarm the event will be accompanied by zone 26,27,28 respectively.



Required Products:

XT600 series control panel

CMA601 Alphanumeric keypad

Hard wired device with normally open or closed relay

Configuration of the programmable inputs can be found at the following menu location:

With the display showing the date and time stamp along with the current Access Level. You must change your Access Level to 4. RIGHT ARROW to ACCESS LEVEL and press YES, RIGHT ARROW to ACCESS LVL: 4 and press YES. When prompted with BADGE OR CODE enter your installer code + YES.

Using the RIGHT ARROW go to CONFIGURATION and press YES, when prompted with BADGE OR CODE, enter your installer code + YES.

With the display showing GENERAL PARAMETERS press the YES key. Use the RIGHT ARROW and go to PROGRAMMABLE INPUTS and press YES. It will now show you PROGRAMMABLE INPUT 1. Use the RIGHT or LEFT ARROW keys to choose which programmable input you will be using and press YES.

DATE / TIME
DISARMED LVL: 3

ACCESS LEVEL
4

CONFIGURATION

PROGRAMMABLE
INPUT 1

General Configuration - Programmable Inputs

After choosing which programmable input you will be using you will be required to configure the input for transmission type, name, and features of the input. Press YES on the parameter, and use the ARROW KEYS to change the value and press YES. Use the ARROW KEYS to move to the next parameter.

TRANSMISSION: DISABLED

ENABLED - Will transmit the event no matter panel status

DISABLED - No transmission will be sent

ONLY IF ARMED - Will transmit the event only when the system is fully armed

TRANSMISSION
ENABLED

ALARM MODE: ALARM

ALARM = Appearance of the event only

ALARM/END = Appearance and restoral of the event

ALARM MODE:
ALARM

INPUT TYPE: NORMALLY OPEN

The INPUT TYPE will depend on whether or not the external wired device you will be hooking up to the Input terminal is Open or Closed in its normal (non alarm) state.

INPUT TYPE
NORMALLY OPEN

EVENT TYPE: INTRUSION

The Event type determines the event that is sent to the central station when the programmable input is triggered.

EVENT TYPE
INTRUSION

Event Types:	<u>Capable Alarm Modes</u>
INTRUSION -	Alarm
TAMPER -	Alarm or Alarm/End
PANIC BUTTON -	Alarm
INCORRECT CODE -	Alarm
DURESS CODE 1-	Alarm
SUPERVISION -	Alarm or Alarm/End
RADIO JAMMING -	Alarm or Alarm/End
LOW PANEL BATT -	Alarm
LOW DEVICE BATT-	Alarm
AC POWER MISS. -	Alarm or Alarm/End
PANEL RESET -	Alarm
SYSTEM ARMED -	Alarm
SYSTEM DISARMED -	Alarm
PERIODIC TEST-	Alarm
ALARM CANCEL -	Alarm
SMOKE DETECTION -	Alarm
PHONELINE MISS. -	Alarm
TMT REQUEST -	Alarm

General Configuration - Programmable Inputs

INPUT NAME is the name that the Central Station will see when this input is triggered. This should describe the function of the device hooked up to the input.

INPUT NAME
PANIC VIDEO

SIREN MODE: SIREN - This will determine how the siren will function when the programmable input is activated.

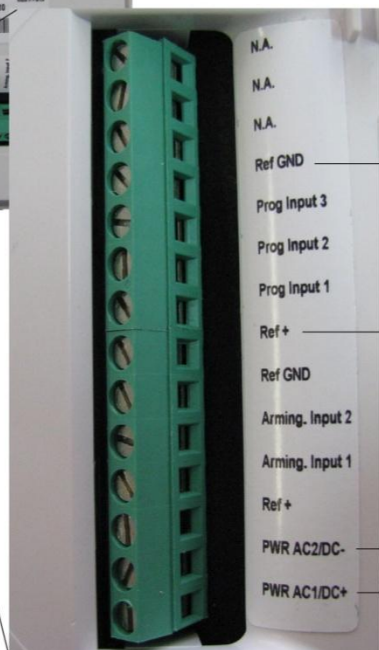
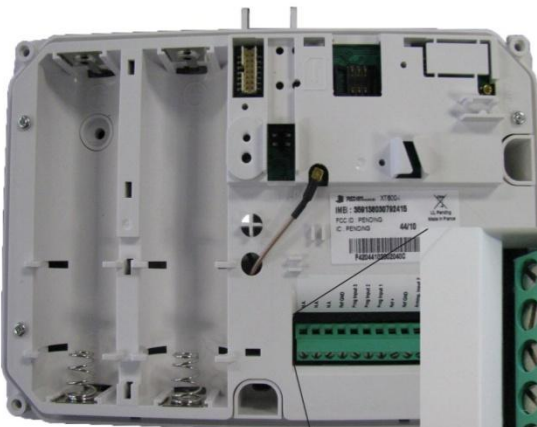
SIREN MODE
SIREN

- SIREN - Activation of all sirens on the system
- WITHOUT SIREN - Only Keypad and Badge Reader sounders
- SILENT - No activation of any sounders or sirens
- DELAY BEEPS - Sounding of delay beeps then full siren

MAPPING: DISABLED - This is a 1 to 1 relationship between a MotionViewer and the programmable input. When the programmable input is triggered it will force the chosen MotionViewer to take a 10 second Video no matter the current status of the MotionViewer. We suggest that this is only used when using the event types INTRUSION and PANIC or the video will not auto download at the Central Monitoring Station.

MAPPING
CAMERA 1

Parameters		Values			Units
		min.	typ.	max.	
Power	voltage	9	12	15	VDC or VAC
	current	2.2	2.2	/	A
REF+ (V_Piles Signal)	voltage	3.5	12	15	VDC
	current			50	mA
Entry (Arming Inputs 1&2 and Prog Input 1,2 & 3)	Entry Inactive Voltage			~1.0	VDC
	Entry Active Voltage	~1.4	12	15	VDC
	current	1.5		3	mA
		@VIN=9V		@VIN=15V	



Ref GND — When using an external hardwired device that is powered, the ground (negative) wire must be hooked up here.

Ref + — When using a dry contact one wire must be hooked up here to use Videofied to power the input.

PWR AC2/DC- — When using the inputs the panel must be powered by 4 Alkaline D-cell batteries and a 12v DC power supply. The power supply must be hooked up to these terminals.



General Configuration - Programmable Outputs

PRODUCT APPLICATION NOTE

Manufactured by RSI Video Technologies

July 2011

The RSI Video Technologies XT series control panels can trigger up to 2 relays hard wired to external devices you would like activated based on an event in the Videofied control panel.

YOU CAN ONLY USE THE OUTPUTS WITH ALKALINE + POWER SUPPLY

Programmable Outputs can be triggered by a specific event, programmable input, or arming input and can stay latched for up to 180 seconds.

This application note will focus on the configuration and use of the programmable outputs.



Required Products:

XT610 series control panel

CMA601 Alphanumeric keypad

External device that you would like to trigger

Configuration of the programmable Outputs can be found at the following menu location:

With the display showing the date and time stamp along with the current Access Level. You must change your Access Level to 4. RIGHT ARROW to ACCESS LEVEL and press YES, RIGHT ARROW to ACCESS LVL: 4 and press YES. When prompted with BADGE OR CODE enter your installer code + YES.

Using the RIGHT ARROW go to CONFIGURATION and press YES, when prompted with BADGE OR CODE, enter your installer code + YES.

With the display showing GENERAL PARAMETERS press the YES key. Use the RIGHT ARROW and go to PROGRAMMABLE OUTPUTS and press YES. It will now show you OUTPUT 1. Use the RIGHT or LEFT ARROW keys to choose which programmable output you will be using and press YES.

DATE / TIME
DISARMED LVL: 3

ACCESS LEVEL
4

CONFIGURATION

OUTPUT 1

General Configuration - Programmable Outputs

After choosing which programmable output you will be using you will be required to configure the output for triggering event, and features of the output. Press YES on the parameter, and use the ARROW KEYS to change the value and press YES. Use the ARROW KEYS to move to the next parameter.

STATUS: DISABLED

- ENABLED - Will activate the output based on the configuration
- DISABLED - Output will not be triggered

TRANSMISSION
ENABLED

LENGTH ACTIV: (0-180sec)

- ALARM = Appearance of the event only
- ALARM/END = Appearance and restoral of the event

ALARM MODE:
ALARM

EVENT TRIGGER TYPE: INTRUSION

The Event type determines the event that is used to trigger the programmable output.

Event Types:

INTRUSION -	SYSTEM ARMED -
TAMPER -	SYSTEM DISARMED -
PANIC BUTTON -	PERIODIC TEST-
INCORRECT CODE -	ALARM CANCEL -
DURESS CODE-	SMOKE DETECTION -
DURESS CODE-	PHONELINE MISS. -
SUPERVISION -	TMT REQUEST -
RADIO JAMMING -	PROGRAMMABLE INPUT 1 -
LOW PANEL BATT -	PROGRAMMABLE INPUT 2 -
LOW DEVICE BATT-	PROGRAMMABLE INPUT 3 -
AC POWER MISS. -	ARMING INPUT 1 -
PANEL RESET -	ARMING INPUT 2 -

EVENT TYPE:
INTRUSION

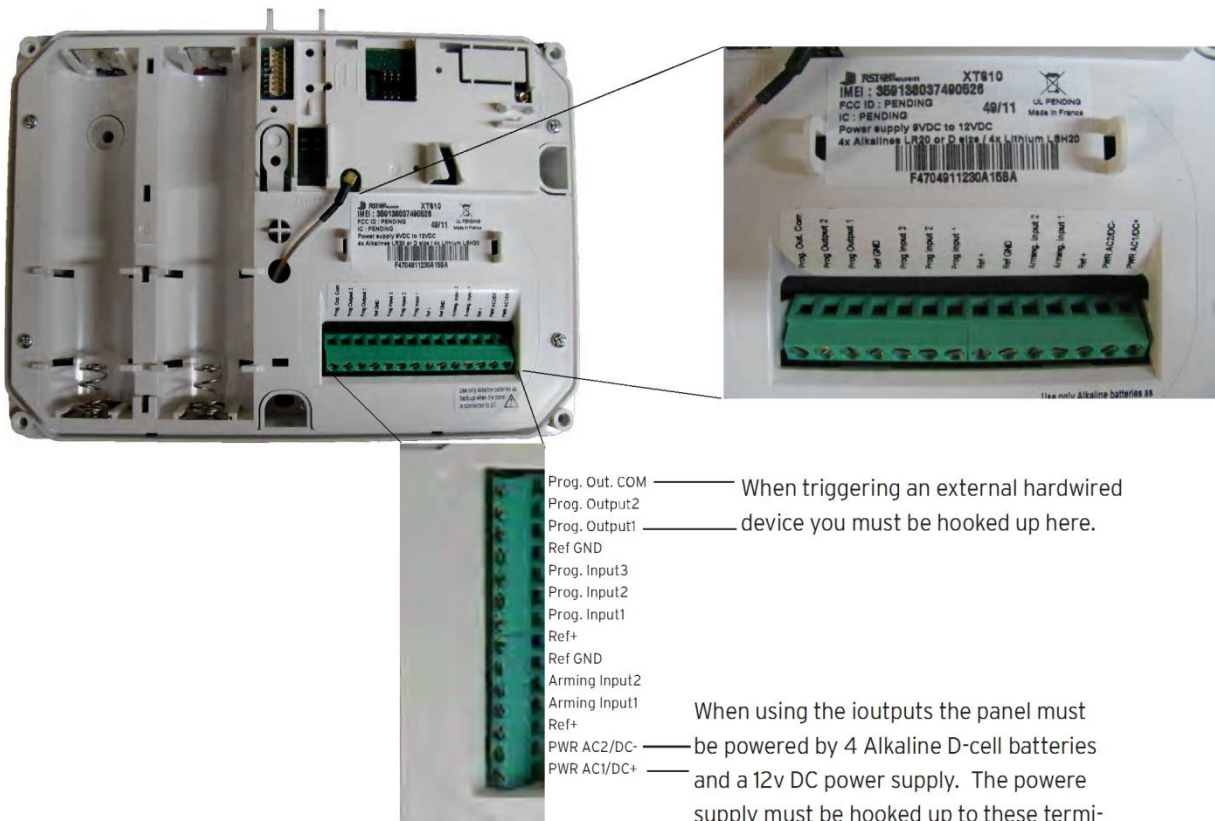
OUTPUT NAME:

Allows you to name the programmable output for identification.

OUTPUT NAME

General Configuration - Programmable Outputs

Parameters		Values			Units
		min.	typ.	max.	
Power	voltage	9	12	15	VDC or VAC
	current	2.2	2.2	/	A
REF+ (V_Piles Signal)	voltage	3.5	12	15	VDC
	current			50	mA
Entry (Arming Inputs 1&2 and Prog Input 1,2 & 3)	Entry Inactive Voltage			~1.0	VDC
	Entry Active Voltage	~1.4	12	15	VDC
	current	1.5 @VIN=9V		3 @VIN=15V	mA



Prog. Out. COM ——— When triggering an external hardwired
 Prog. Output2 ——— device you must be hooked up here.
 Prog. Output1
 Ref GND
 Prog. Input3
 Prog. Input2
 Prog. Input1
 Ref+
 Ref GND
 Arming Input2
 Arming Input1
 Ref+
 PWR AC2/DC- ——— When using the ioutputs the panel must
 PWR AC1/DC+ ——— be powered by 4 Alkaline D-cell batteries
 and a 12v DC power supply. The powere
 supply must be hooked up to these termi-
 nals.



X SERIES - SCHEDULING

PRODUCT APPLICATION NOTE

Manufactured by RSI Video Technologies

April 2011

The RSI Video Technologies X series control panels allow you to enter a seven day schedule by setting upto 99 appointments for arming and disarming the system at specific times on specific days.

The Scheduling feature is only activated on control panel firmware listed V.02.32.00.81 and V.02.32.00.E1 or newer. In order to use the feature you must enable it in the software and configure the required schedules for the job.

This feature can be programmed using the CMA601 keypad or the Frontel TMT Installer program v2.6.6.6 or newer.



XL VERSION STICKER LOCATION

Required Products:

XT600/610 series control panel with version sticker V.02.32.00.E1

XL600 series control panel with version sticker V.02.32.00.81

CMA601 - Alpha Numeric Keypad or Frontel TMTi V2.6.6.6.



XT VERSION STICKER LOCATION

When installing a system that will utilize the scheduling feature you will need to complete the full initial installation including adding a user code before going into the configuration of the schedule.

The following instructions will explain how to program the Programmable input for mapping video from a MotionViewer when the hard wired panic is triggered.

With the display showing the date and time stamp along with the current Access Level. You must change your Access Level to 4. RIGHT ARROW to ACCESS LEVEL and press YES, RIGHT ARROW to ACCESS LVL: 4 and press YES. When prompted with BADGE OR CODE enter your installer code + YES.

DATE / TIME
DISARMED LVL: 3

ACCESS LEVEL
4

PRODUCT APPLICATION NOTE: SCHEDULING

Using the RIGHT ARROW go to CONFIGURATION and press YES, when prompted with BADGE OR CODE, enter your installer code + YES.

CONFIGURATION

With the display showing GENERAL PARAMETERS press the LEFT ARROW until you see AREAS AND DEVICES and press YES.

AREAS AND DEVICES

The display will show DEVICES. Press the LEFT ARROW key until the display shows SCEDULING press YE.S.

SCHEDULING

With the display showing SCHEDULING OFF press YES and use the RIGHT ARROW to change it to ENABLE and press YES.

SCHEDULING
ENABLE

Use the RIGHT ARROW to move to CALENDAR MANAGEMENT and press YES.

CALENDAR
MANAGEMENT

Display shows NEW ENTRY ? OK/YES or ESC/NO, press YES to create a new action.

NEW ENTRY ?
OK/YES ESC/NO

Use the ARROW KEYS to move the hour that you would like the system to perform its first action. The system uses a 24 hour clock. Press YES when the hour has been chosen. Do the same for the Minute (you will see the two lines above the hour move to the minute after pressing YES).

05:00 OPEN 01

05:30 OPEN 01

With the lines now over the OPEN, use the arrow keys to choose between OPEN action and CLOSE action and press YES.

05:30 OPEN 01

Now the display shows (1=Mon...7=SUN). To choose the days that this action will take place press the corresponding numbers and press YES.

02:00 OPEN 01
12345 (1=Mon...7=

EXAMPLE: If you want it to happen only on weekdays you would press, 1, 2, 3, 4, 5.

The system will now ask if the action is OK allowing you to double check teh schedule you are about to confirm. Press YES if every-thing looks correct.

02:00 OPEN 01
12345 -- OK?

The display will now show all schedules that have been entered in cronological order. You can use the ARROW KEYS to cycle through them.

02:00 OPEN 01
12345 --

PRODUCT APPLICATION NOTE: SCHEDULING

ADDITIONAL CONFIGURATION OPTIONS

1. To enter a new schedule action with the display showing the current scheduling action press YES and YES again to put in a NEW ENTRY.

2. To modify a schedule action, with the display showing the current scheduling action press YES then RIGHT ARROW to MODIFY ENTRY and press YES.

3. When scheduling is enabled on the panel you can see a S next to the LVL:# on the main screen.

Thur 04/28	16:18
DISARMED LVL :4 S	

4. By default the system will sound arming warnings at 10min, 5min, and 1min. To disable this you will access AREAS AND DEVICES and LEFT ARROW to WARNING BIP ENABLED.

WARNING BIP ENABLED

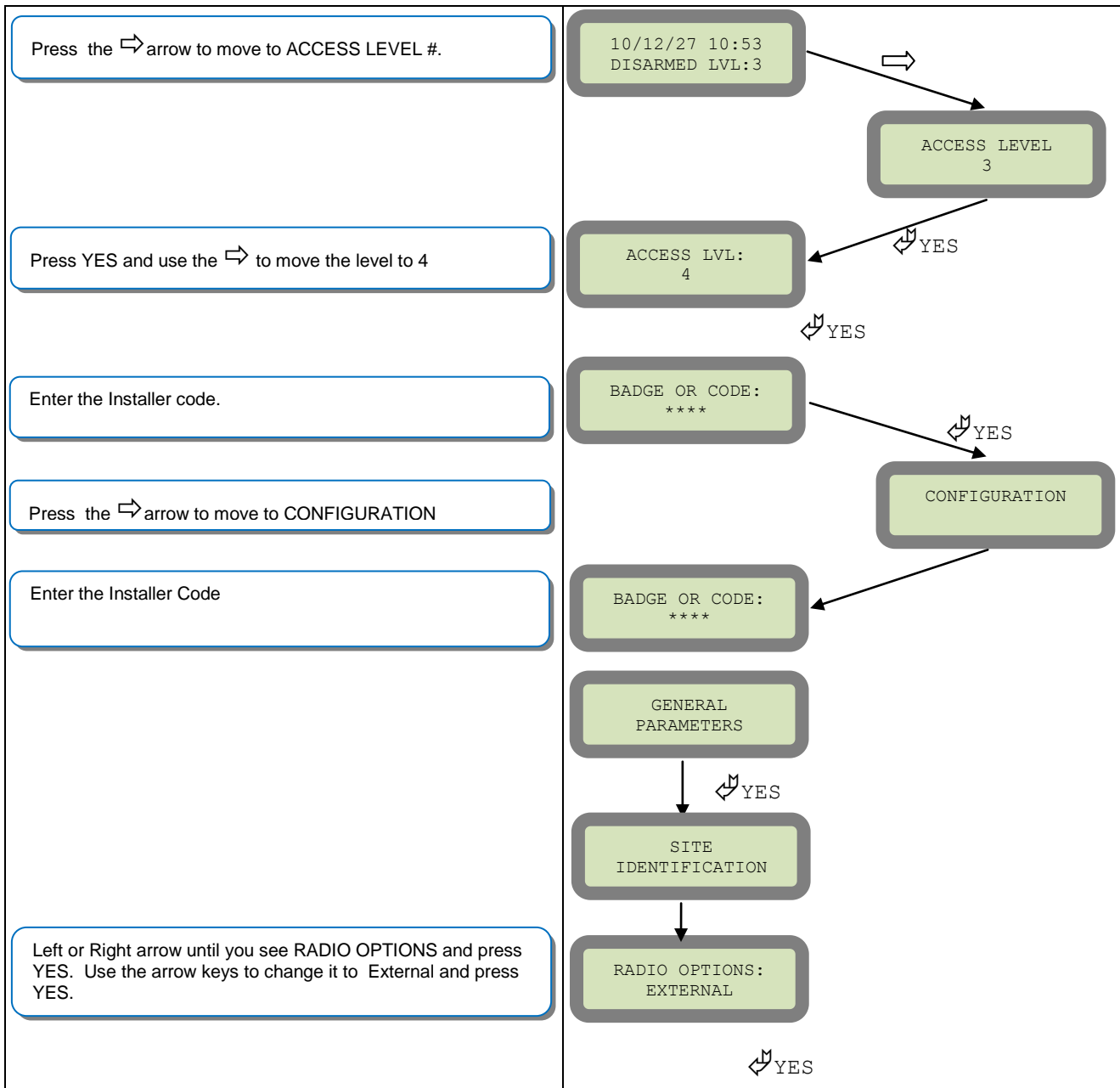
4.1 Press YES on WARNING BIP ENABLED and use the ARROW KEYS to change it to DISABLED and press YES.

WARNING BIP DISABLED

5. When using Frontel TMTiv2.6.6.6. you must add the line
 Managelocsched=1
 to the Frontel.ini located in the Frontel2/Bin folder in your installation. Once this has been added you must restart Frontel.

How to enable the External RF Antenna

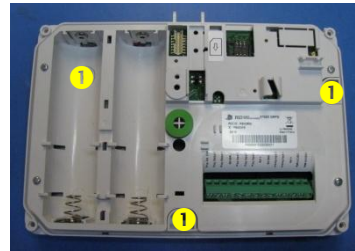
The XTO 600/610 control panels have built in High Gain RF and GPRS antennas. The GPRS external comes pre-activated and hooked up, while the RF antenna is hooked up but needs to be activated in Configuration after you have completed initial programming. The following steps will walk you through how to enable the High Gain RF antenna after initial programming.



How to mount the XT600i/610 and XTX600/610

How to Mount the Control Panel?

Fix the back casing on the wall with 3 screws (1)



How to Mount the XTO600/610

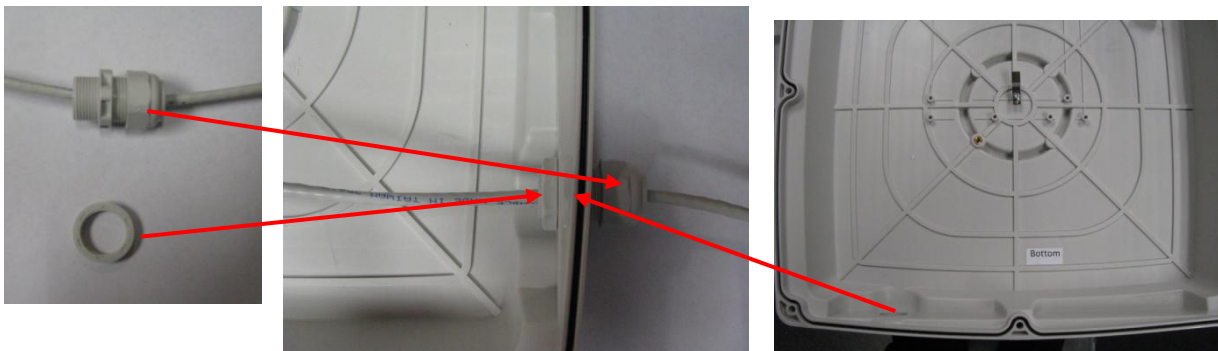
Included Mounting Hardware:

Case and Mounting Screws, locking washers, bolts and nuts.

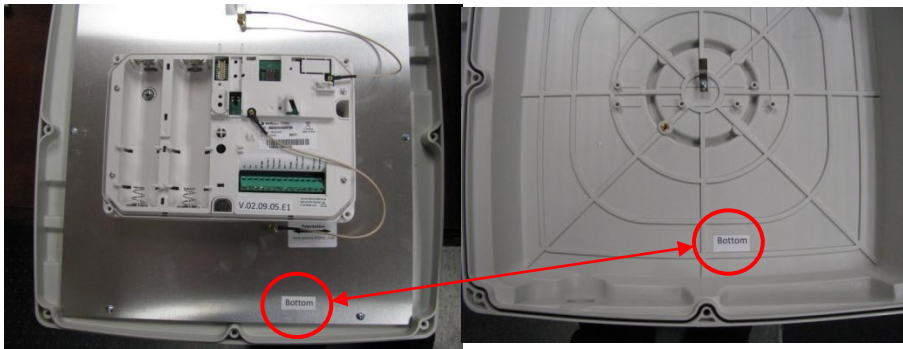


Mounting Brackets

1. Install the Weather Resistant Wire Port.



2. Place the cover on the base.



1. When closing the cover be sure to line up the two **BOTTOM** stickers face to face.
2. Be Careful not to slide the cover on. Instead come straight down in order to have the cover tamper properly seat.

3. Screw the cover to the base using the provided 8 screws.



NOTE: To ensure proper functioning and to keep the case water proof you must mount the panel with the wire channel facing down.

4. Place the L shaped mounting bracket onto the base using the provided bolts.



5. Place the two U shaped brackets around the pole and attach the locking bracket. Use the locking washers and nuts to attach the U bracket to the L mount.

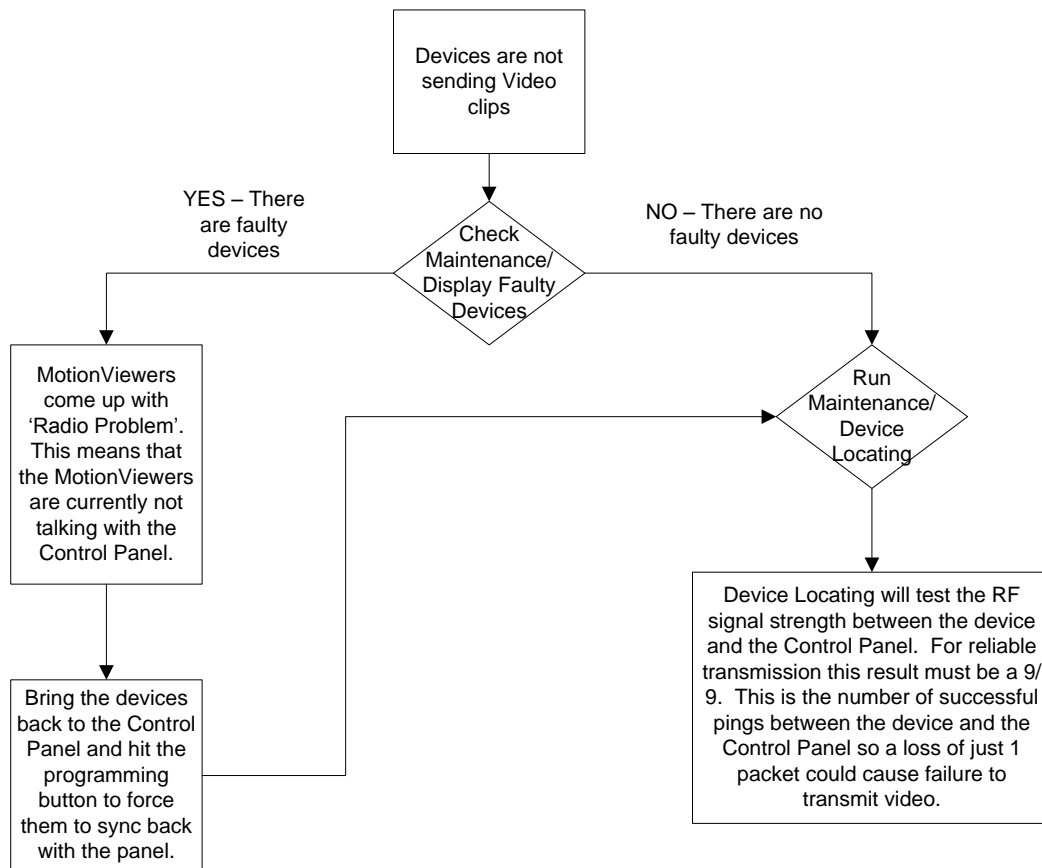


Troubleshooting

Monitoring Station is not getting ANY video but is getting signals:

Good communication between the MotionViewers and the Control Panel is key to getting successful video to the monitoring station. During mounting of any device on your Videofied system you must run the Radio Range/Device Locating test to ensure that the mounting location is with-in range of the Control Panel.

- Concrete, Metal and earth are some of the largest RF inhibitors and should be taken into account when choosing mounting locations.
- When running the Radio Range/Device Locating test you should have the site as close to the same as it would be when the site is closed/no one is there, i.e. close garage doors/service doors, etc. Device locating steps can be found on Page 17.

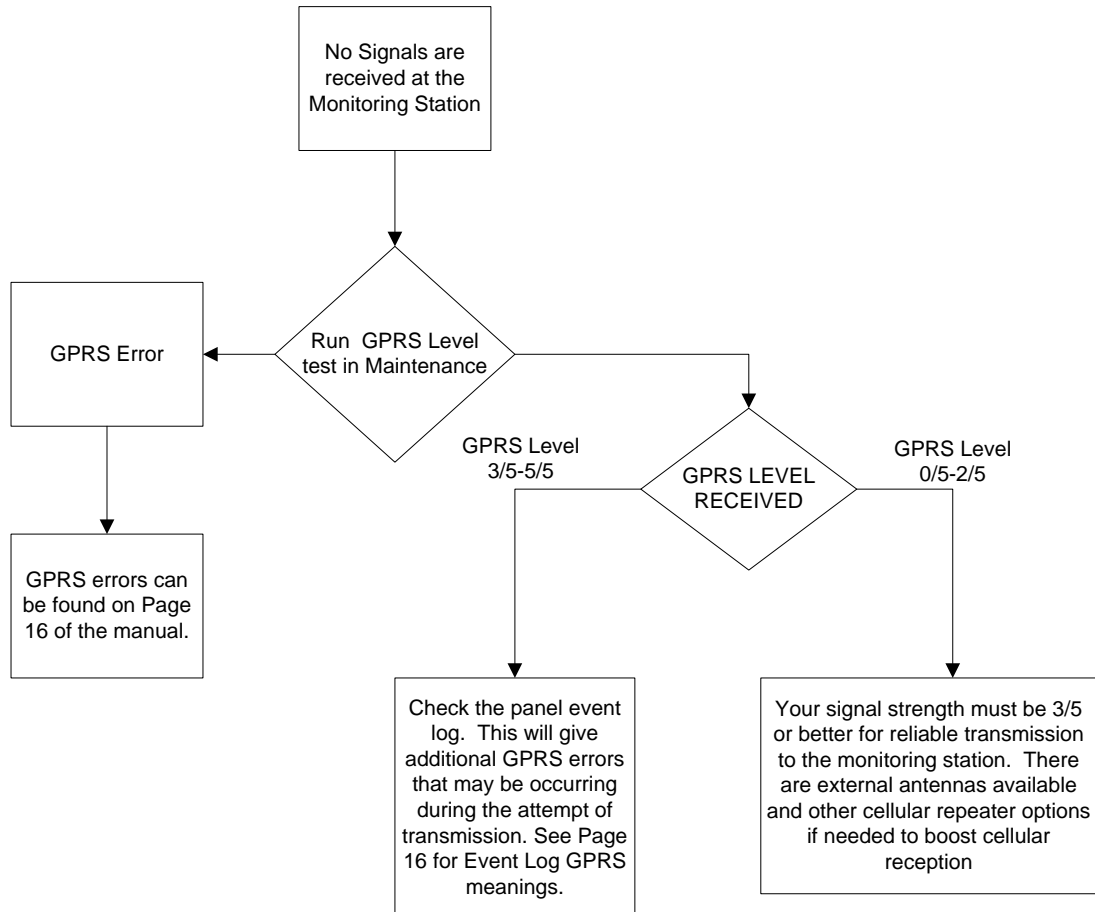


Important Note: Videofied will only automatically download the first MotionViewer video that is taken and only if this is the primary event or reason for the panel connecting with the monitoring station. If the account is on test you will only ever get the first video downloaded. If you are only getting the events at the station and all tests above pass more than likely you are sending a preceding event (like an arming signal or door contact) which will cause the video to not auto download because the video is not the primary event.

Monitoring Station is not getting any signals:

Communication between the Control Panel and the Monitoring Station is over the GPRS side of the GSM cellular network.

- You will want to check your GPRS level to see if there is an error/level is too low. You must have a 3/5 or better for reliable transmission to the Monitoring Station. How to run the GPRS level test and GPRS error codes can be found on page 16.
- If you receive a successful GPRS level test you will want to check the panel event log for more GPRS errors that could be occurring during the attempted transmission but after cellular authentication.



Panel is staying CONNECTED WITH MONITOR STATION

While the Control Panel is attempting or is connected with the Monitoring Station you will see this message when you attempt to move around on the keypad. If the system is not successful in connecting with the station it will retry the connection multiple times, locking you out of programming until it is done trying. This normally can take anywhere between 15-20 minutes.

- If you want to force the panel to disconnect you must
 - 1. Remove the batteries from the control panel
 - 2. Secure the cover tamper of the panel
 - 3. Re-insert the batteries into the control panel and sync the keypad back by pressing the CLR and ESC/NO buttons at the same time.
 - 4. Access the Configuration menu by changing you access level to 4 and go to Configuration Monitor Station.
 - 5. In Monitoring Parameters – Disable monitoring until the connection issue is resolved.

Unable to record device or getting 'Pairing Failure' error

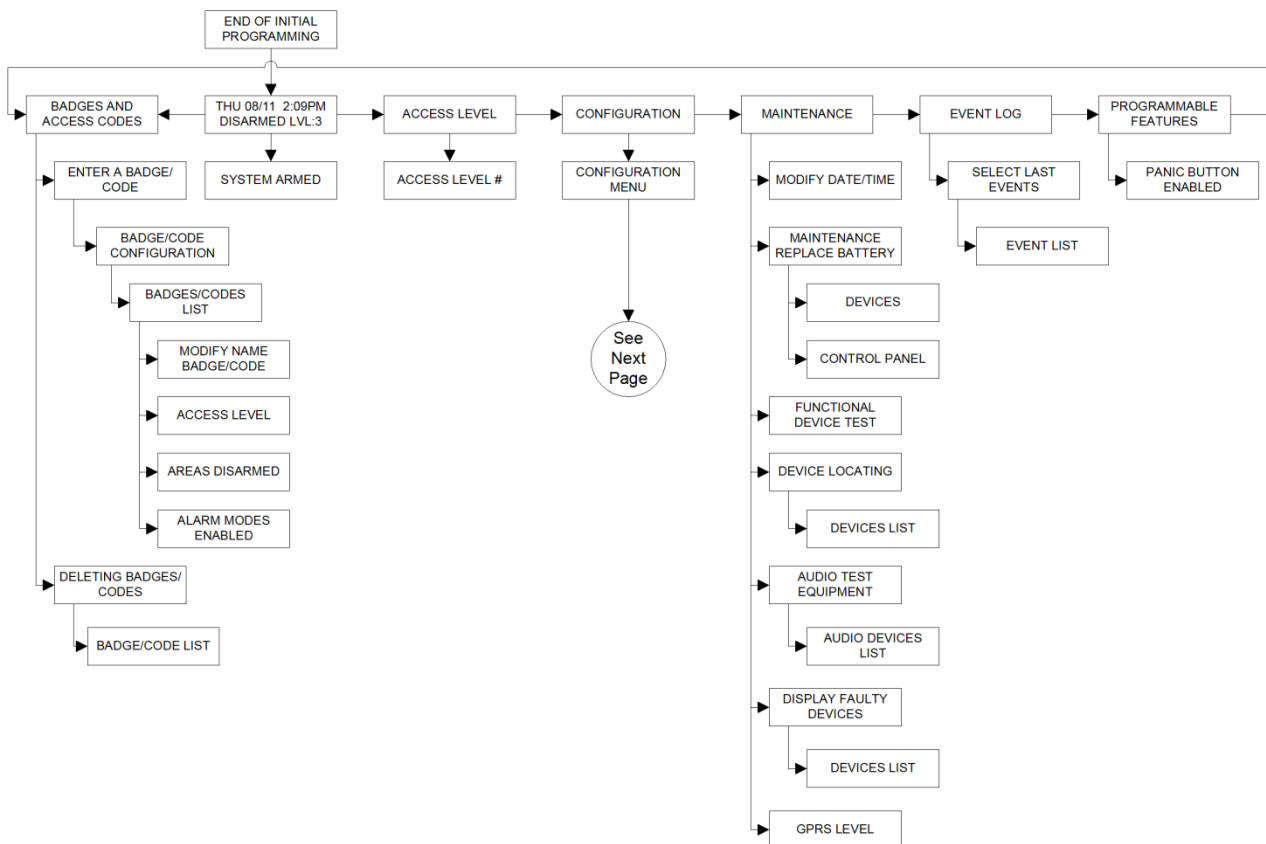
This usually occurs when the device still has a pairing key from a previous system or setup. To perform a pairing key override:

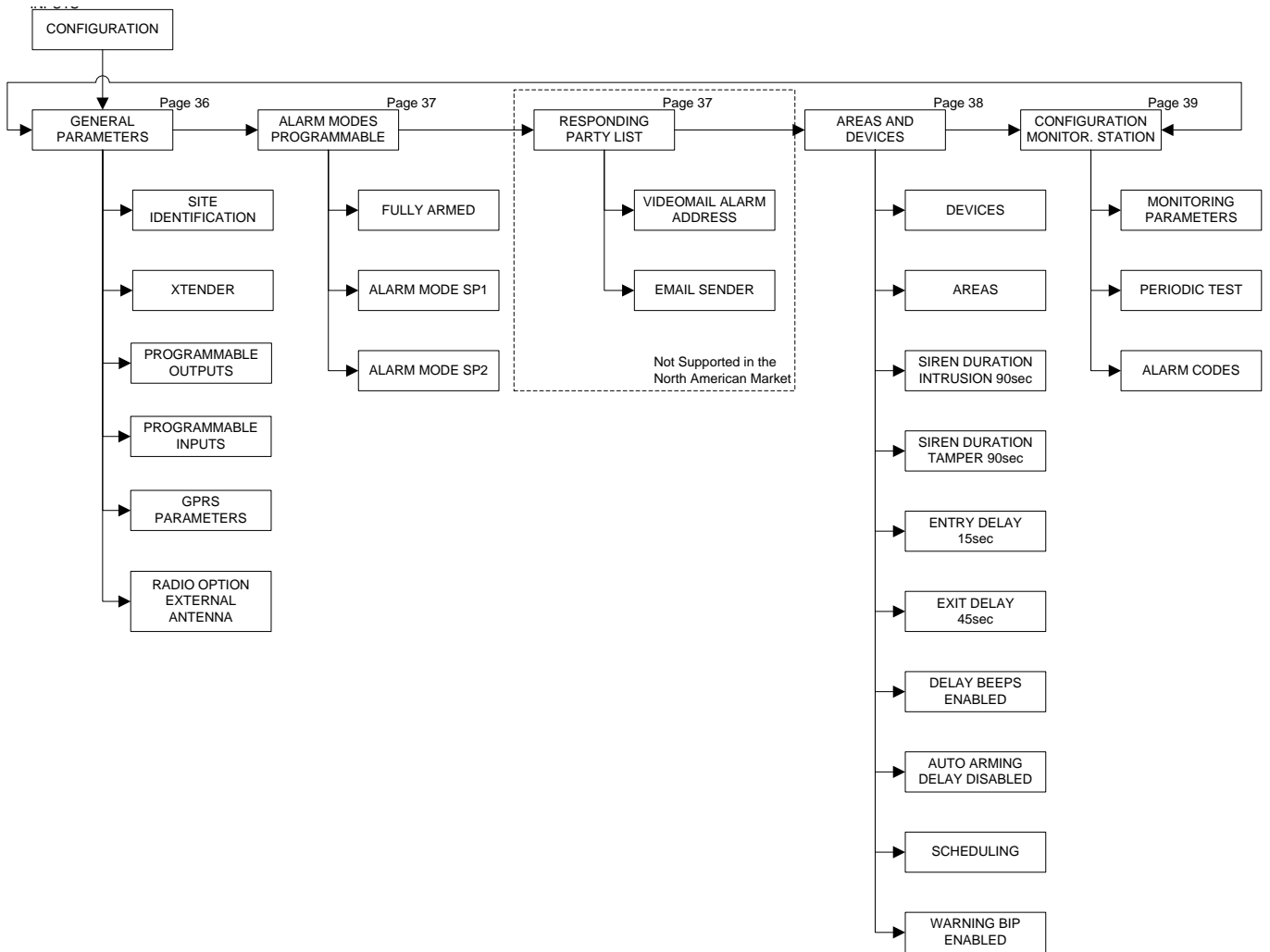
- 1. Remove all batteries from the device.
- 2. Make sure your system is ready to record devices:
 - A. If learning in the keypad, press the panel's programming button. **DO NOT HOLD THE PANEL'S PROGRAMMING BUTTON**
 - B. If learning in additional devices, make sure the keypad reads 'Press Programming Button Of Device'
- 3. Insert a single battery into the device.
- 4. Wait 1 second for device to power up.
- 5. Press programming button of device (for keypads press 'CLR' & 'ESC/NO' keys at the same time)

For the 4-button remote keyfobs the process is slightly different:

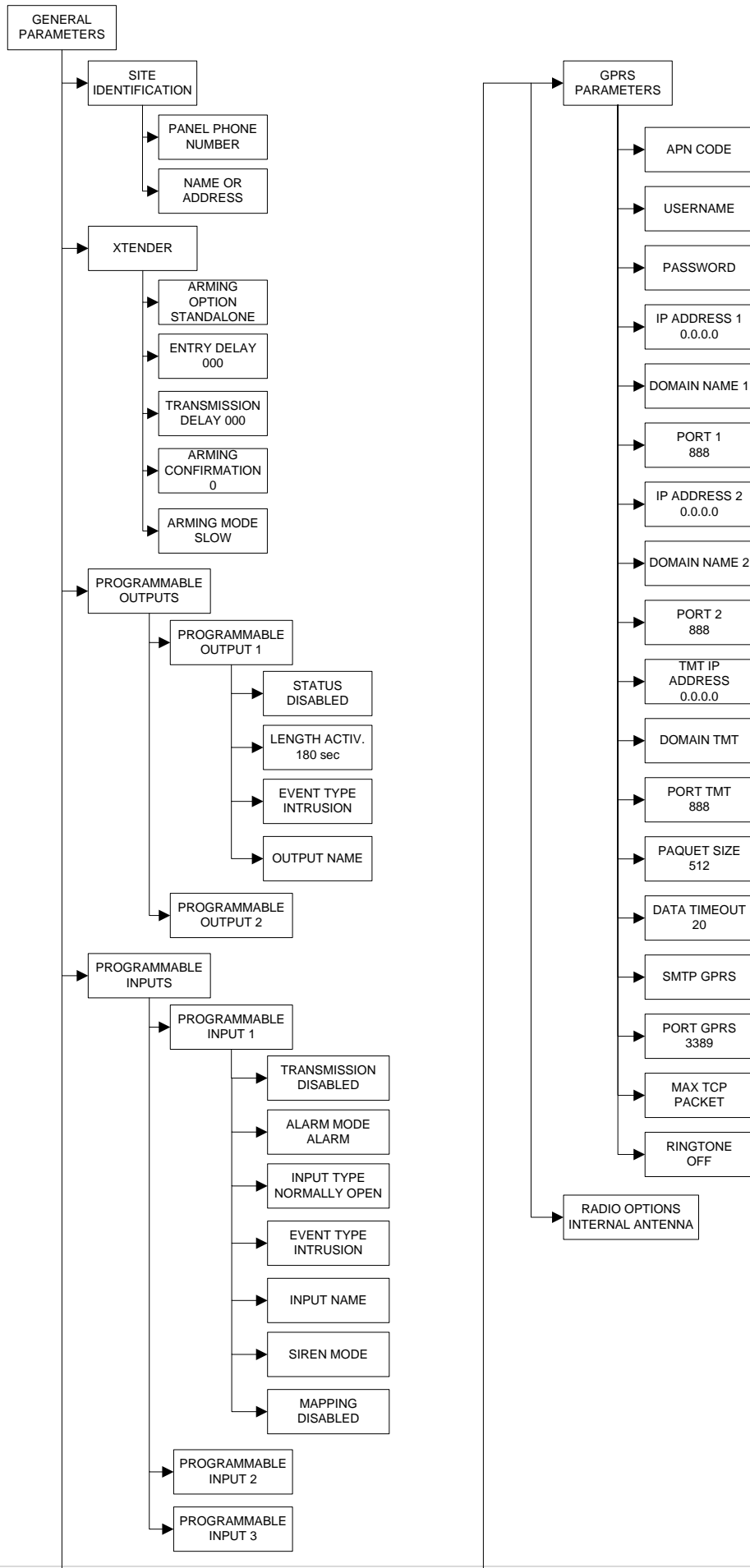
- 1. Press and hold the 'ON' and 'OFF' keys at the same time for 12 seconds
- 2. Wait 1 second
- 3. Press and hold the 'ON' and 'OFF' keys at the same time for 5 seconds, you should hear 4 beeps from the keyfob.

XT -SERIES 'AFTER INITIAL PROGRAMMING' FLOW CHART

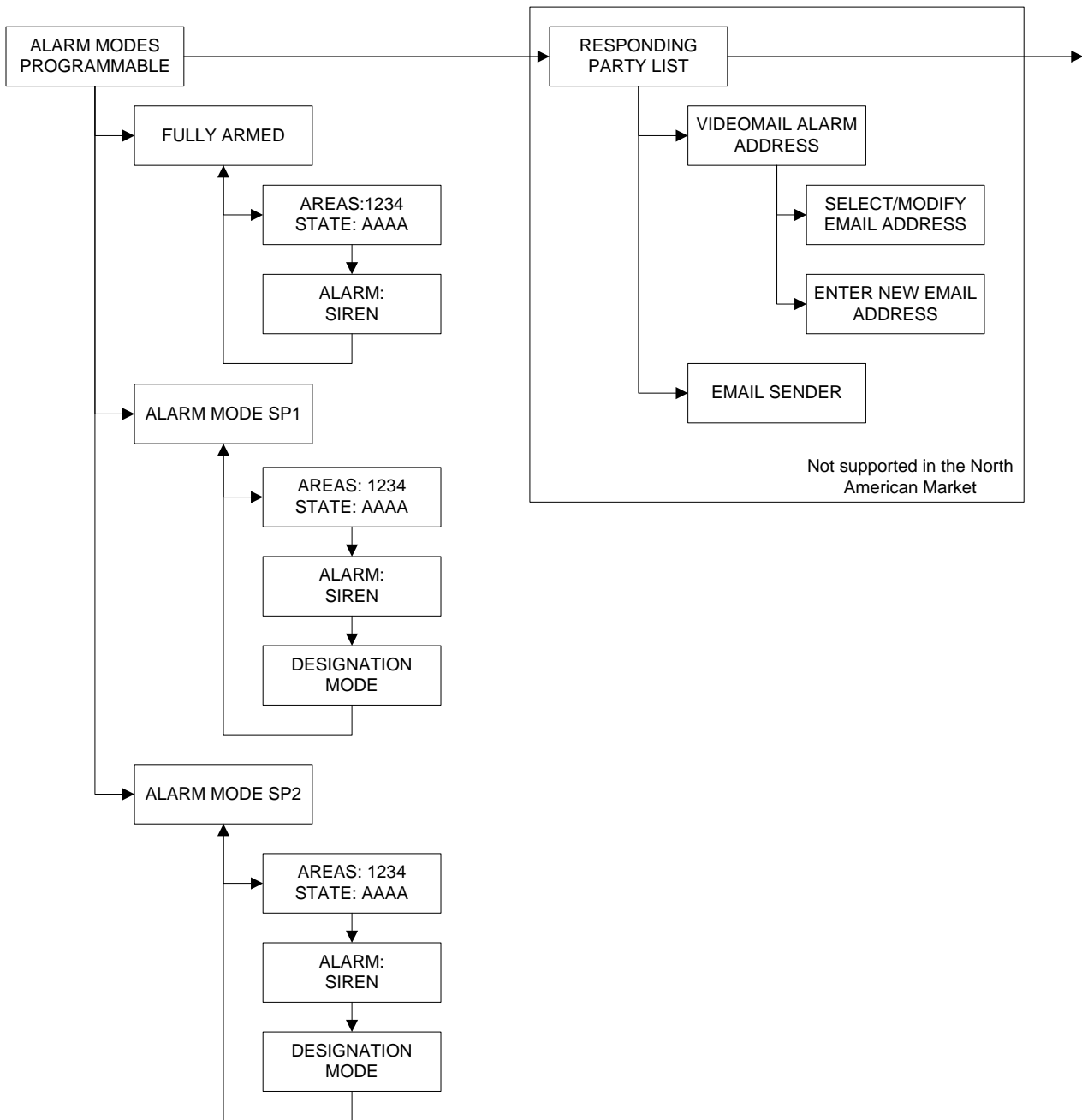




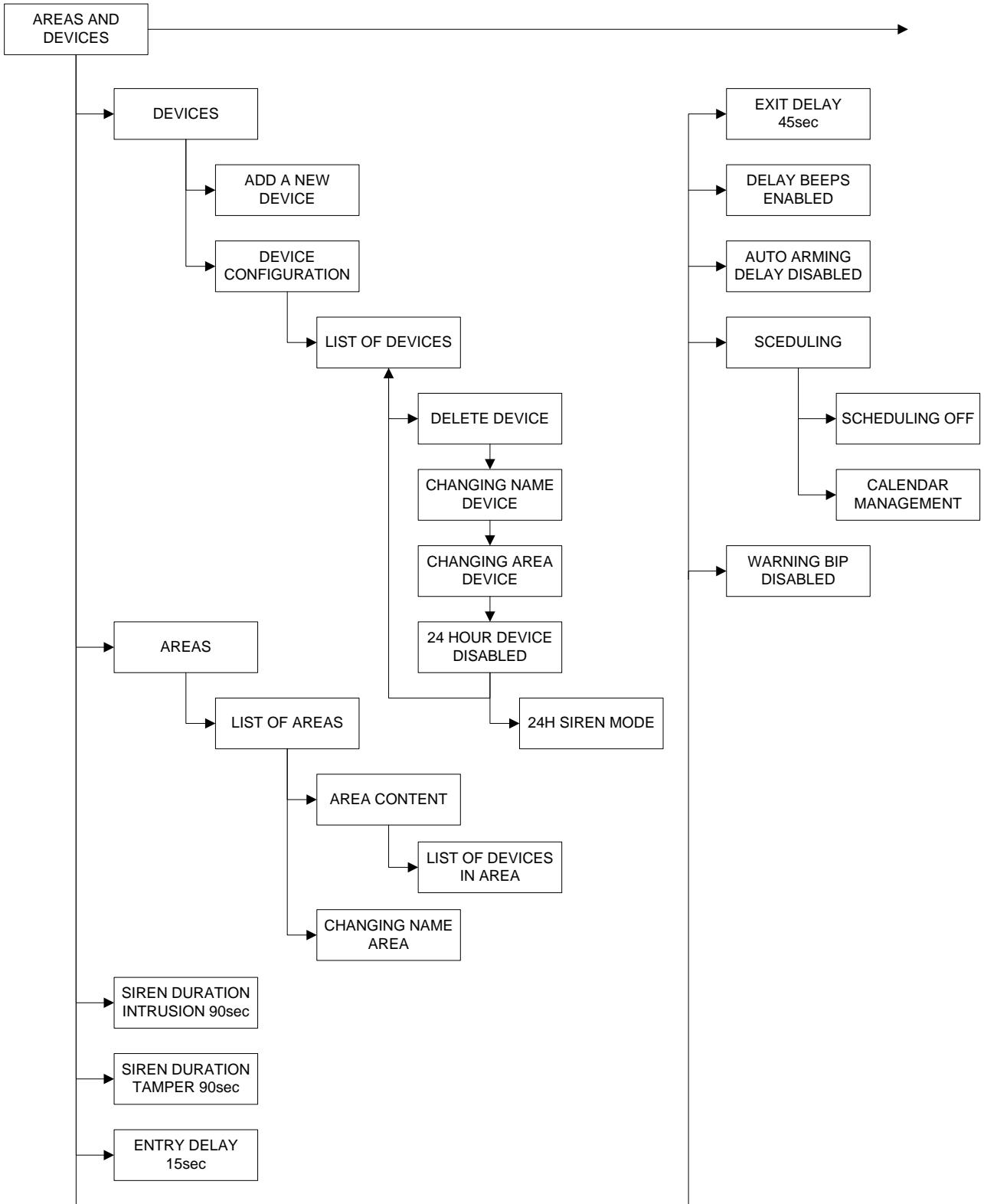
GENERAL PARAMETERS



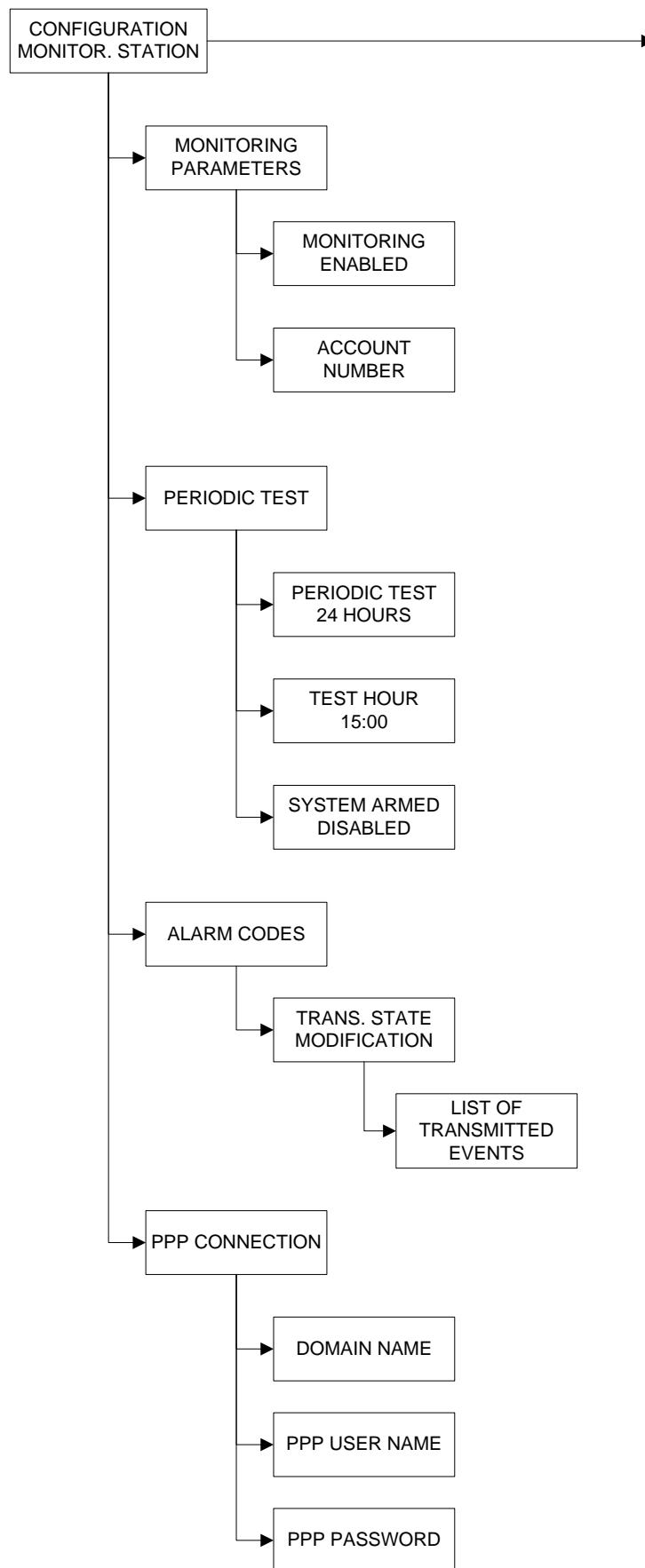
ALARM MODES PROGRAMMABLE / RESPONDING PARTY LIST



AREAS AND DEVICES



CONFIGURATION MONITOR. STATION



Addendum

1. LSH20 Control Panel Batteries:

Primary lithium battery

LSH 20 HTS

3.6 V Primary lithium-thionyl chloride (Li-SOCl₂)
High power, high temperature, super robust
D-size spiral cell



Cell size references		R20 - D
Electrical characteristics		
<i>(typical values relative to cells stored for one year or less at +30°C max.)</i>		
Nominal capacity <i>(under 100 mA at +110°C 2.0 V cut-off. The capacity restored by the cell varies according to current drain, temperature and cut-off)</i>		9.3 Ah
Open circuit voltage (at +20°C)		3.67 V
Nominal voltage <i>(under 3 mA at 110°C)</i>		3.6 V
Nominal energy <i>(at +110°C)</i>		33.48 Wh
Pulse capability : Typically up to 4000 mA. <i>(The voltage readings may vary according to the pulse characteristics, the temperature, and the cell's previous history. Fitting the cell with a capacitor may be recommended in severe conditions. Consult Saft)</i>		
Maximum recommended continuous current <i>(at +110°C, to maintain cell heating within safe limits. Battery packs may imply lower level of maximum current and may request specific thermal protection. Consult Saft)</i>		1000 mA
Storage (recommended) <i>(for more severe conditions, consult Saft)</i>		+30°C (+86°F) max
Operating temperature range <i>(Excursions up to +120°C, with some swelling, consult Saft)</i>		-60°C/+110°C (-76°F/+230°F)

2. LS14500 Peripheral Batteries: Excludes SE601 and SE651

Primary lithium battery

LS 14500

3.6 V Primary lithium-thionyl chloride (Li-SOCl₂)
High energy density
AA-size bobbin cell



Cell size references		R6 - AA
Electrical characteristics		
<i>(typical values relative to cells stored for one year or less at +30°C max.)</i>		
Nominal capacity <i>(at 2 mA +20°C 2.0 V cut-off. The capacity restored by the cell varies according to current drain, temperature and cut-off)</i>		2.6 Ah
Open circuit voltage (at +20°C)		3.67 V
Nominal voltage (at 0.2 mA +20°C)		3.6 V
Pulse capability: Typically up to 280 mA <i>(280 mA/0.1 second pulses, drained every 2 mn at +20°C from undischarged cells with 10 µA base current, yield voltage readings above 3.0 V. The readings may vary according to the pulse characteristics, the temperature, and the cell's previous history. Fitting the cell with a capacitor may be recommended in severe conditions. Consult Saft)</i>		
Maximum recommended continuous current <i>(Higher currents possible, consult Saft)</i>		70 mA
Storage (recommended) <i>(for more severe conditions, consult Saft)</i>		+30°C (+86°F) max
Operating temperature range <i>(Operation above ambient T may lead to reduced capacity and lower voltage readings at the beginning of pulses. Consult Saft)</i>		-60°C/+85°C (-76°F/+185°F)

3. Lithium Battery Storage:

Storage

- The storage area should be clean, cool (*preferably not exceeding +30°C*), dry and ventilated.

Warning

- Fire, explosion and burn hazard.
- Do not recharge, short circuit, crush, disassemble, heat above 125°C (257°F), incinerate, or expose contents to water.
- Do not solder directly to the cell (*use tabbed cell versions instead*).

4. Finding Manufacture Week and Year:

The Manufacture week and year can be found in the serial number of the device/control panel. The second sets of 4 numbers in the serial number are WWYY.

####0411##### = Which shows that this device was manufactured in the 4th week of 2011.