



Not for  
Retail Trade

**INDUSTRIAL**  
ENERGIZER

D SIZE / FORMAT EN95-LR20-AM1-1.5V

Made in U.S.A. for / Fabrigiert in U.S.A. für:  
Energizer Holdings, Inc., St. Louis, MO 63141  
Energizer Energizer SA, CH-2128 Grenchen

Not for  
Retail Trade

**INDUSTRIAL**  
ENERGIZER

D SIZE / FORMAT EN95-LR20-AM1-1.5V

Made in U.S.A. for / Fabrigiert in U.S.A. für:  
Energizer Holdings, Inc., St. Louis, MO 63141  
Energizer Energizer SA, CH-2128 Grenchen

Not for  
Retail Trade

**INDUSTRIAL**  
ENERGIZER

D SIZE / FORMAT EN95-LR20-AM1-1.5V

Made in U.S.A. for / Fabrigiert in U.S.A. für:  
Energizer Holdings, Inc., St. Louis, MO 63141  
Energizer Energizer SA, CH-2128 Grenchen

Not for  
Retail Trade

**INDUSTRIAL**  
ENERGIZER

D SIZE / FORMAT EN95-LR20-AM1-1.5V

Made in U.S.A. for / Fabrigiert in U.S.A. für:  
Energizer Holdings, Inc., St. Louis, MO 63141  
Energizer Energizer SA, CH-2128 Grenchen



XT810  
IMEI : 357005032914388  
FCC ID : PENDING  
IC : PENDING  
Power supply 8VDC to 12VDC  
4x Alkaline LR20 or D size / 4x Lithium LR20  
F4803811230A13ED

Prog. Out. Com  
Prog. Output 2  
Prog. Output 1  
Ref. GND  
Prog. Input 2  
Prog. Input 1  
Ref. +  
Ref. GND  
Analog. Input 2  
Analog. Input 1  
Ref. +  
PWR. AC/DC-  
PWR. AC/DC+

Use only Alkaline batteries as  
back-up when the panel  
is connected to DC

RADIO

D SIZE / FORMAT EN95-LR20-AM1-1,5V

**INDUSTRIAL**

Made in U.S.A. for: / Fabriqué au É.-U. pour:  
Energizer Holdings, Inc., St. Louis, MO 63141  
Europe: Energizer SA, CH1218 Geneva

Energizer

D SIZE / FORMAT EN95-LR20-AM1-1,5V

**INDUSTRIAL**

Install correctly (+/-). Do not charge.  
Korrekt installieren (+/-). Nicht wiederaufladen.  
Installez correctement (+/-). Ne chargez pas.  
Instale correctamente (+/-). No las cargue.

无汞

Not for Retail Trade

D SIZE / FORMAT EN95-LR20-AM1-1,5V

**INDUSTRIAL**

Made in U.S.A. for: / Fabriqué au É.-U. pour:  
Energizer Holdings, Inc., St. Louis, MO 63141  
Europe: Energizer SA, CH1218 Geneva

Energizer

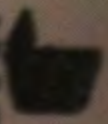
D SIZE / FORMAT EN95-LR20-AM1-1,5V

**INDUSTRIAL**

Install correctly (+/-). Do not charge.  
Korrekt installieren (+/-). Nicht wiederaufladen.  
Installez correctement (+/-). Ne chargez pas.  
Instale correctamente (+/-). No las cargue.

无汞

ALCALINE / ALCALINE  
+ D 03-2016



PSYSTEMS  
Microelectronics

XT610

IMEI : 357006032914366

FCC ID : PENDING

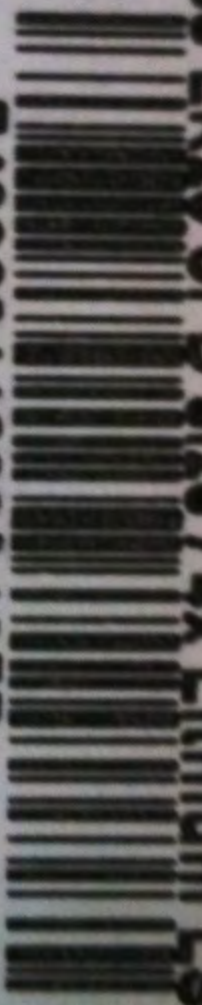
38/11

UL PENDING  
Made in France

IC : PENDING

Power supply 8VDC to 12VDC

4x Alkalines LR20 or D size / 4x Lithium LSH20



F4803811230A13ED



g. Out. Com  
g Output 2  
g Output 1  
GND  
g Input 3  
g Input 2  
g Input 1  
ef +  
ef GND  
arming. Input 2  
arming. Input 1  
Ref +  
PWR AC2/DC-

Installer correctement (+/-). Ne chargez pas.  
Instalar correctamente (+/-). No las cargue.  
天来

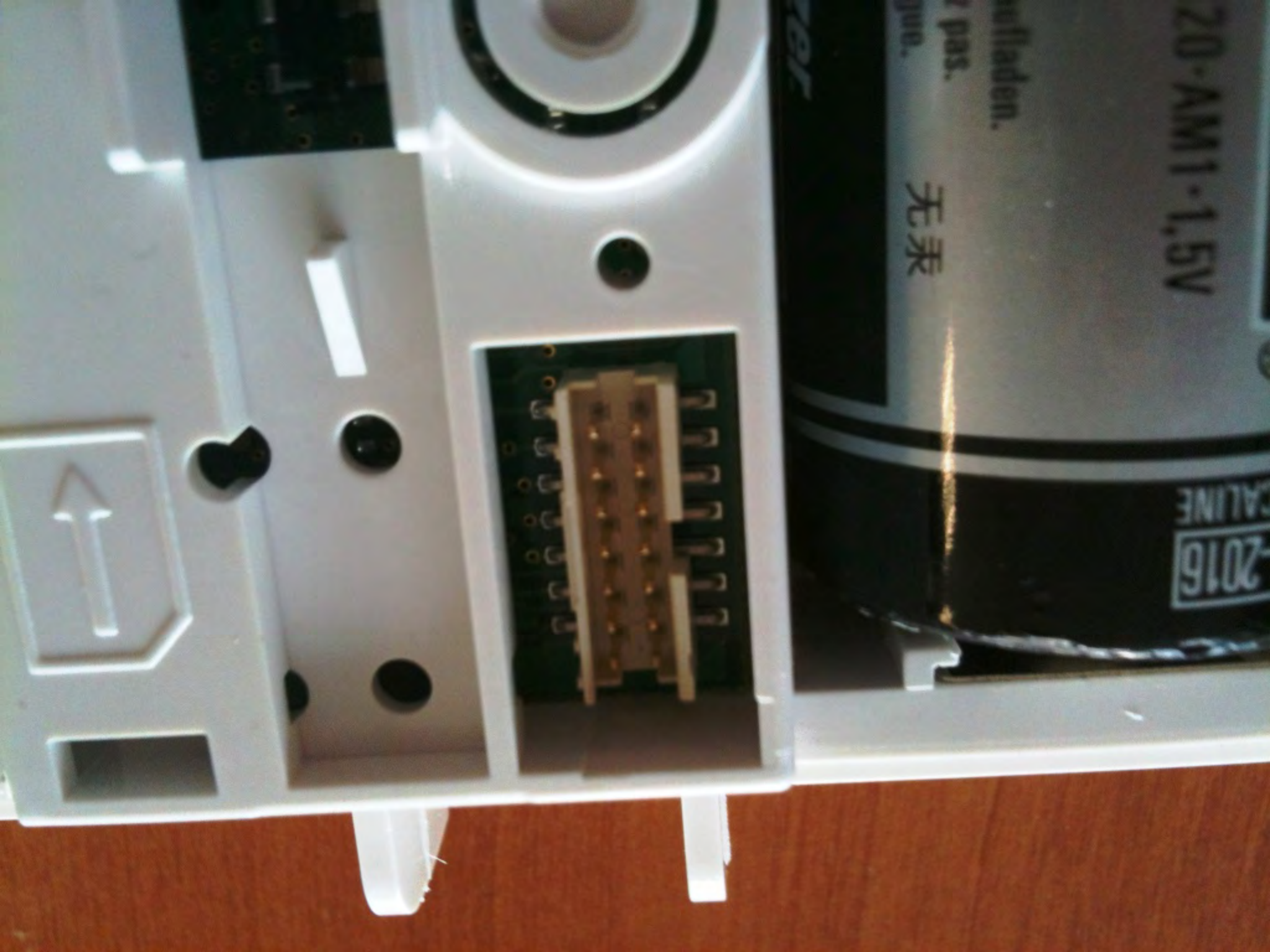
XT810  
IMEI : 357080032914308  
FCC ID : PENDING  
39/711  
U. PENDING



RADIO



RADIO



2016-AM1-1,5V

2016  
SALINE

aufladen.  
pas.  
100.

无汞





Telit GSM4-Quad V1  
Model: 987994010914969  
FCC ID: R17288400  
IC: 6329A-086628  
5802020114969  
L071 RL 1491  
CE 0889  
Designed in Italy. Made in China.

4700  
C FK  
09KF

SCA1232C-0A1

SCA0732B-0B1A

5CU0732B-0b1



G5CA0732B-0B1A



5CU0732B-0b1



TEC Q R7088402  
R 81014 G88402  
10840221H00  
LOT N 1411

CE 0889

TELTIT G884-QUAD V2

MP: 26726632914386

CHANGNING, MADE IN CHINA

ARM

5CA1232C 2A1

4700  
C FK  
09KF

100

G5CA0732B-0B1A

1 2 3 4 5 6 7 8 9 10 11 12 13 14 15 16 17 18 19 20 21 22 23 24 25 26 27 28 29 30 31 32 33 34 35 36 37 38 39 40 41 42 43 44 45 46 47 48 49 50

**Telit** GE864-QUAD V2

IMEI: 357005032914366

FCC ID: R17GE864Q2

IC: 5131A-GE864Q2

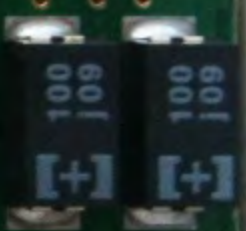
10S000221H00

LOT N.: 1411



**C E 0889**

Designed in Italy, Made in China







Telit G854L-QDAD V2  
IMEI: 3575080222914366  
FCC ID: R07G854A02  
IC: 5131A-G854A02  
Lot N.: 1411  
CE0889  
Designed in Italy, Made in China

100

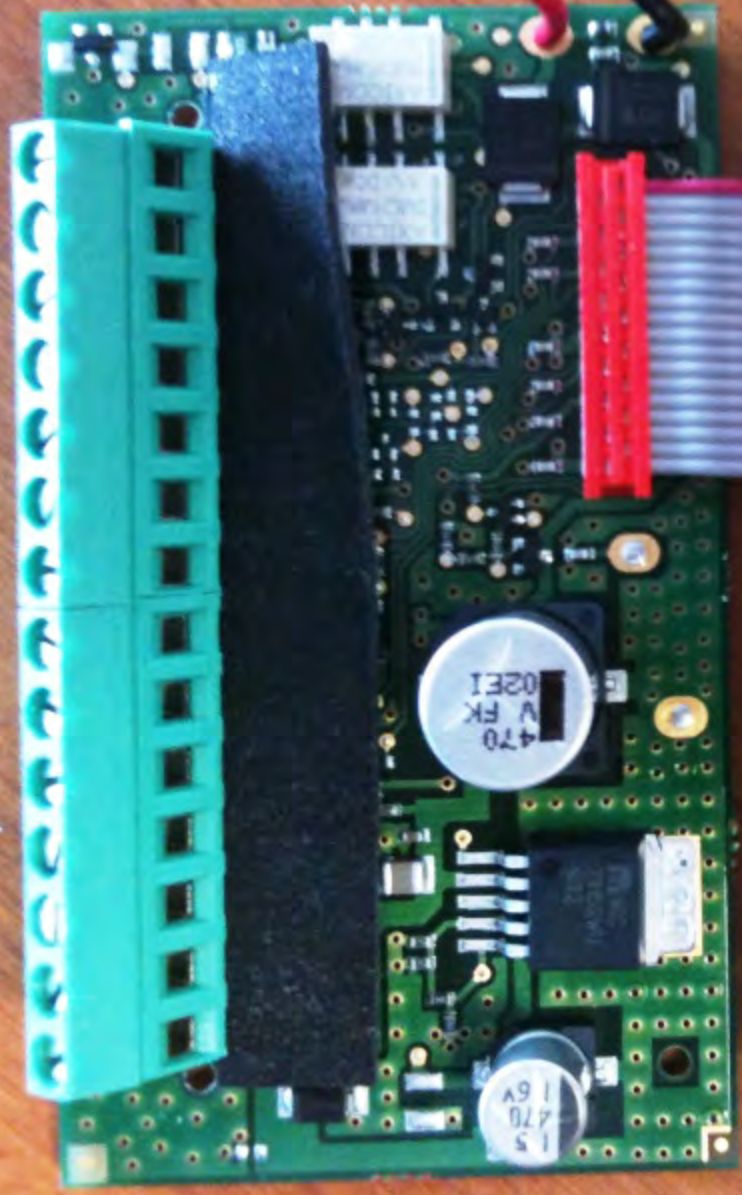
4700  
G.P.K.F.  
100

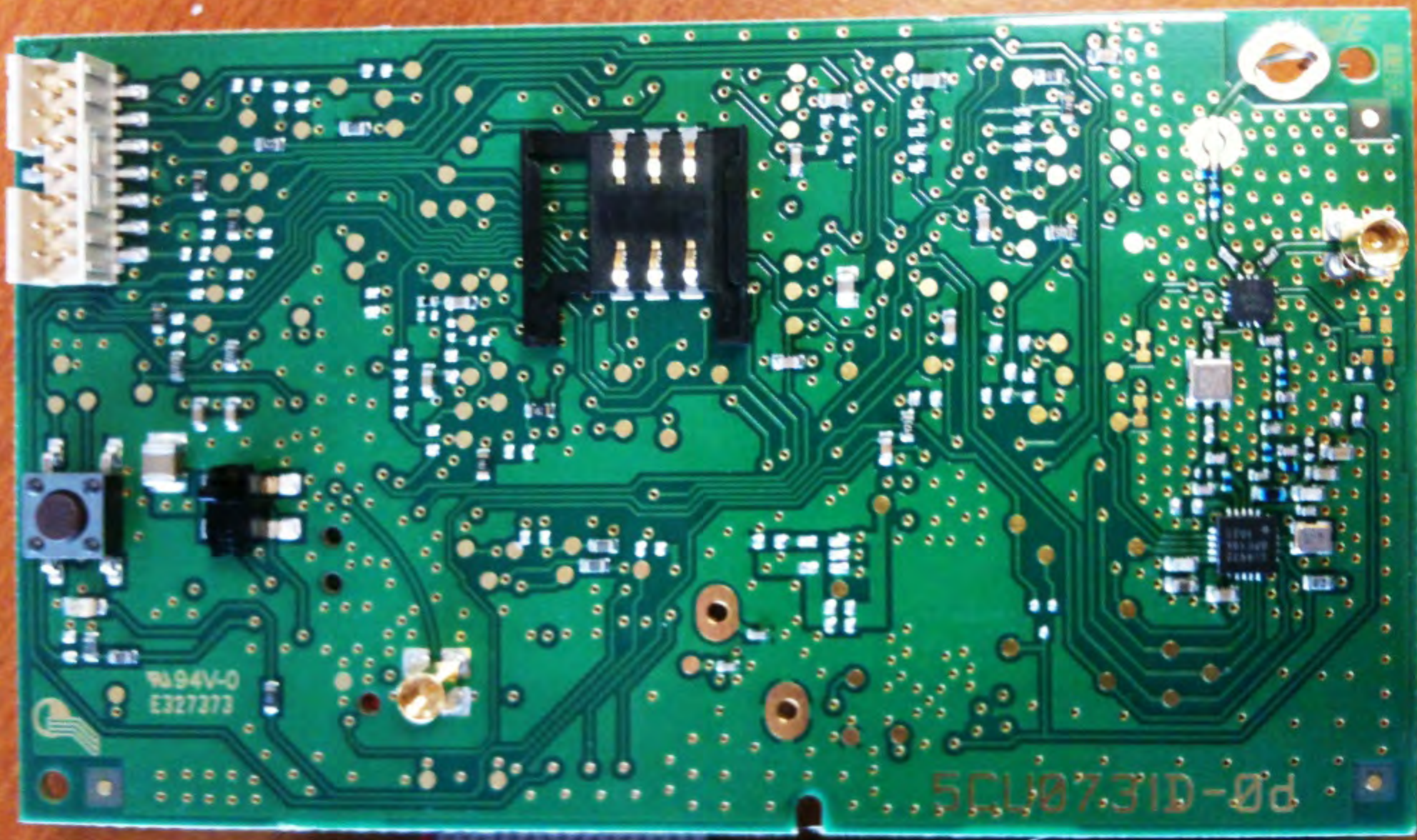
5CA1232C 2A1

ELIB

5CA10720

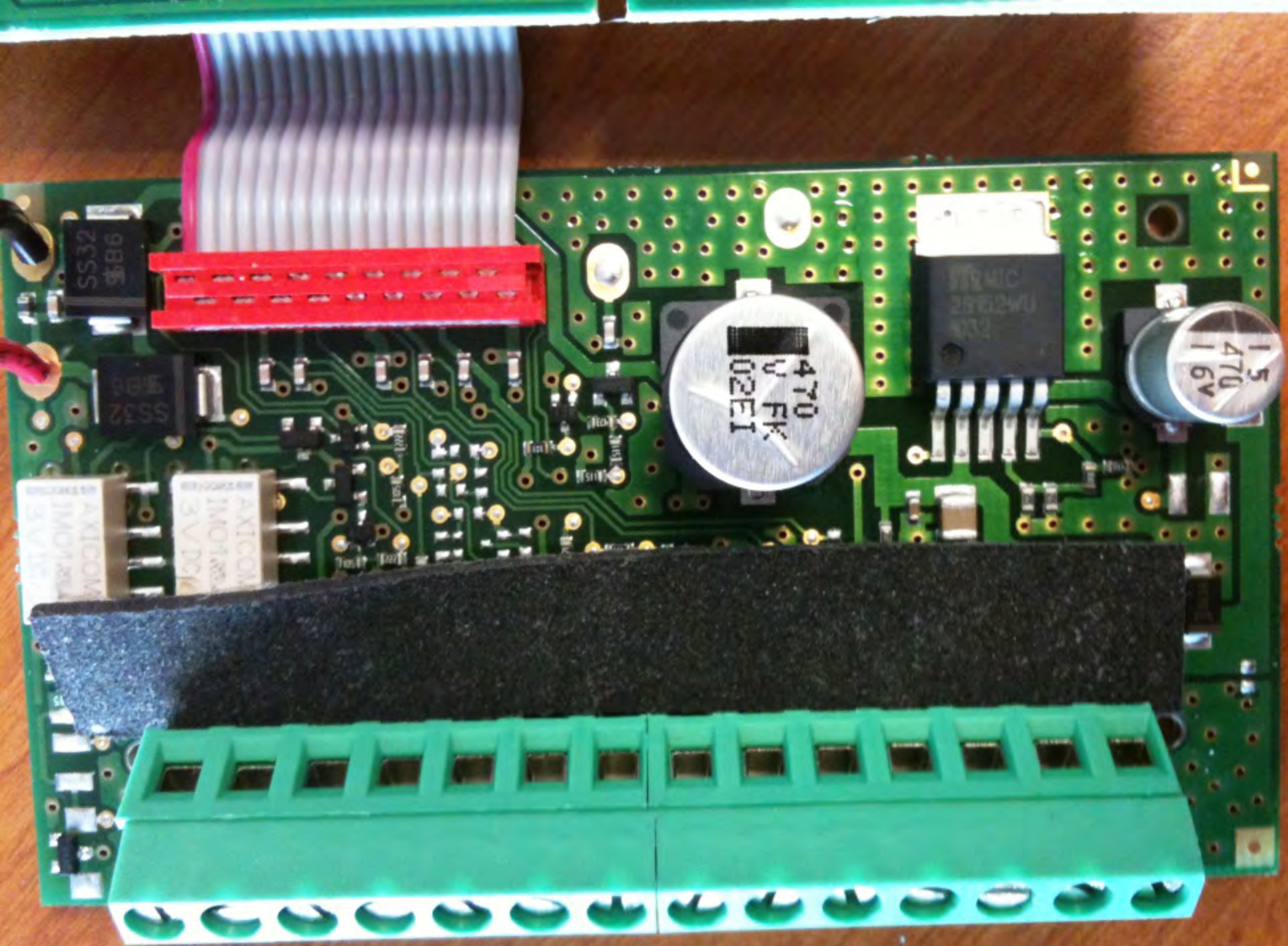
281



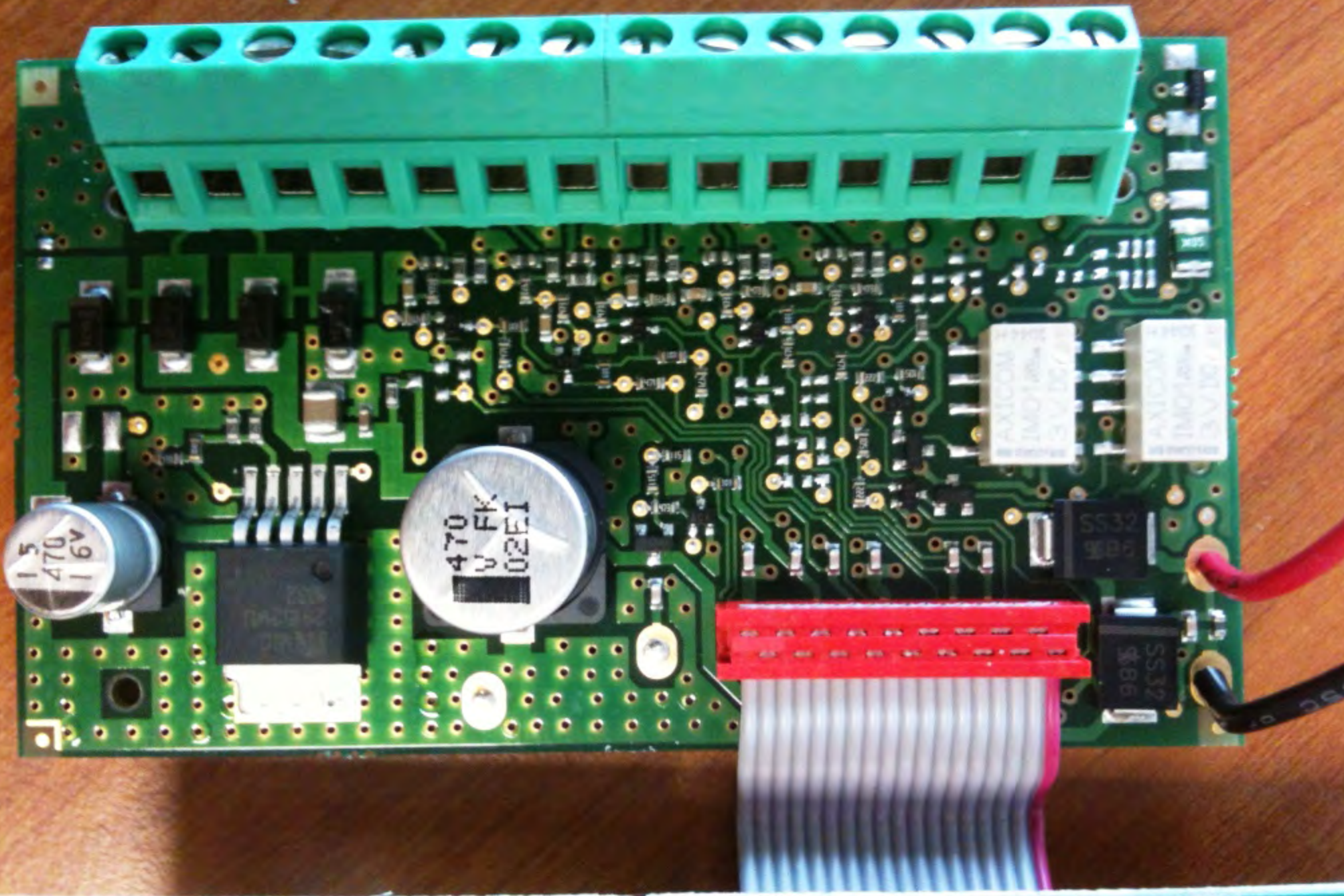


9A94V-0  
E327373

PD-D1E707J5







15  
470  
16V

470  
V FK  
02EI

SS32  
886

SS32  
886

SS32  
886

SS32  
886

WORLD

