

Main features

The ISMV 200/601/702 is a wireless, battery-powered, motion activated indoor video camera. It can also be activated by user request.

- Wireless technology for optimal security.
- Color video (lighted sites) or black & white (night vision).
- Infrared LED for night vision.
- Standard motion coverage lens.
- Wall and cover tamper.
- Powered by 3 Lithium CRI23A batteries for extended autonomy.
- Device supervision every 8 minutes.
- Video capture and transmission in «streaming mode» on user request.



Installation guidelines

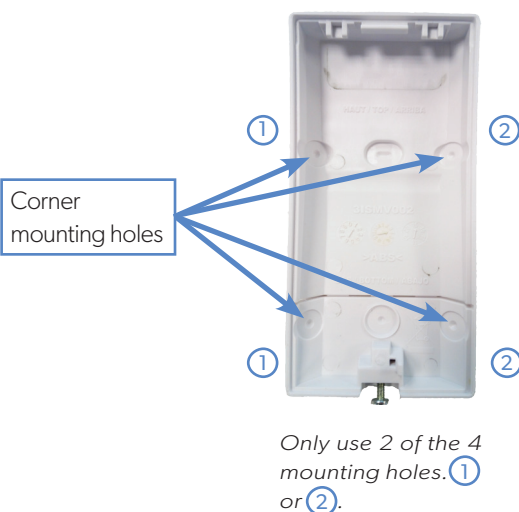
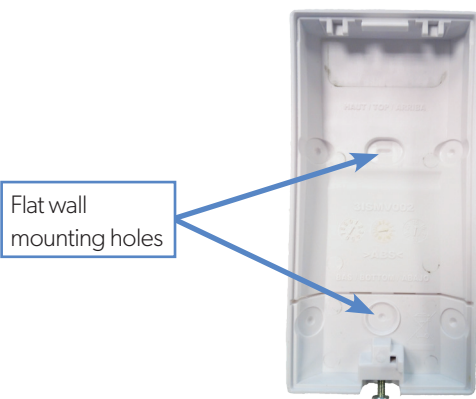
For an easier installation, programming and RF testing should be done to check for good communication between the control panel and all system devices before mounting.

Install the detector and other system devices in the following order:

- > Programming / RF Testing: Program detector and all other devices into the control panel and test RF communication at each intended device location to the control panel.
- > Mounting: Mount detector at the tested location.

Mounting rules

- > Use proper tools and hardware.
- > Mount indoors in a temperature controlled environment.
- > Mount camera 2.1m from the floor.
- > Respect Top and Bottom side of the Motion Viewer
- > When possible, mount in a wall corner in order to aim at a complete room
- > Mount detector on an outside wall, aimed at area to protect.
- > Do not aim detector at windows, especially those that let in direct sunlight, or at heat sources such as lamps, fireplaces, radiators and heating vents.
- > Do not aim detector at moving objects such as curtains, fans or animals.
- > Do not cover the Fresnel lens.

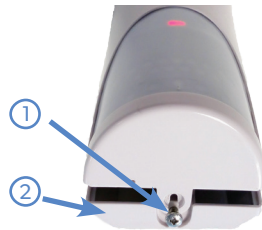


Programming / RF Testing / Mounting

The following provides summarized steps for device programming, testing, and mounting. For complete details, refer to the control panel installation manual.

1 Loosen bottom screw ①

Separate base from ISMV ②



2 Install 3 CR123A 3V batteries, observing correct polarity.

3 Enter the panel into programming/configuration mode.

4 Using a programmed alphanumeric keypad, proceed through menus until the display shows ADD A NEW DEVICE.

5 Press OK. The display shows PRESS PROGRAM BUTTON OF DEVICE.

6 Press and release the program button on the ISMV ③ using a paper clip. The ISMV LED flashes red ④.



Wait for the keypad to display: CAMERA REGISTERED.

7 Press OK, the keypad displays RADIO RANGE TEST ? Press OK again. The ISMV LED starts flashing and the keypad displays TEST IN PROGRESS.

8 Move the ISMV to the intended mounting location and confirm the signal is 9/9, indicating good communication with the control panel.

9 Press OK to end the radio range test then press ESC/NO.

10 The display shows :

AREA ALLOCATION :

AREA : 1

Press either arrow button on the keypad until the desired AREA number appears, then press OK. By default all devices in area 1 will be subject to the entry and exit delays.

11 The screen displays NAME + LOCATION :

Enter an appropriate device name (up to 16 characters). The name of the device should describe its intended mounting location or zone. Press OK. The display will show the device number and name for your verification.

12 Mount the ISMV on the wall:

> Follow the mounting rules on page 1.

> Hold the ISMV base against the mounting surface and mark the appropriate mounting holes.

> Drill pilot holes and install anchors where needed.

> Place the base on mounting surface so that the pilot holes line up and secure base with appropriate screws.

> Attach camera to base and secure with screw if required.

13 Press OK. The display shows FUNCTIONAL DEVICE TEST? Press YES again and verify IMV operation. The red LED indicates the detection field.

14 Press OK to end the detection test.

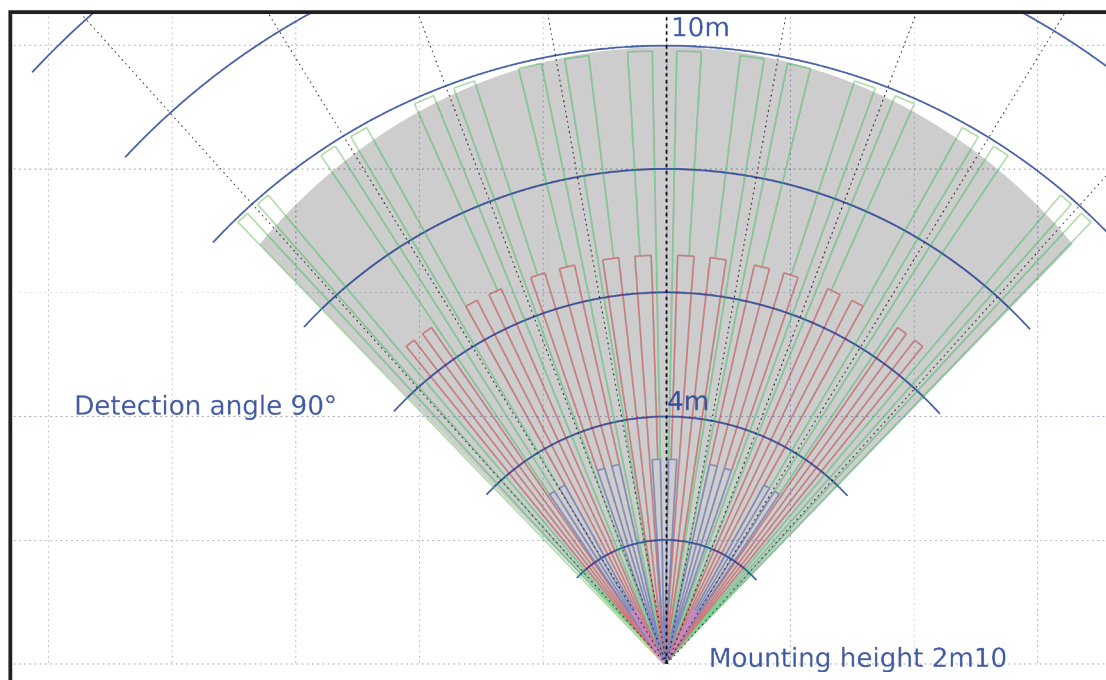
15 The display shows ADD A NEW DEVICE? Repeat steps 1-14 for remaining devices.

16 When finished, exit from configuration mode by pressing and holding the ESC/NO for 5 seconds.

Mounting recommendations

- Recommended mounting height is **2,1 m**. There may be a **1 m** radius blind zone under the detector depending on the room size and detector installation height. Confirm the detection field using the functional device test.
- The ISMV is fitted with a **90° wide angle lens** that allows the camera to cover the full size of the area to protect. It will reduce the blind area under the detector as well.
- Please mount the ISMV **in an angle** to optimize detection. It shall be mounted **opposed to the access point or asset** you need to protect. The detector should not be mounted close to a door or an access point. Such installation increase the probability of a missed intrusion. When stairs mounted, please aim the detector towards the entry or the exit of the stairwell.

Detection diagram



Streaming option

The new ISMV MotionViewer allow the user to request a live video session.

The ISMV is the first battery-powered wireless camera detector emitting on 868MHz able to provide a **live video stream from its camera**.

The 868 MHz frequency has excellent range and allow for excellent battery-life.

Security notes / (FR) Notes de sécurité / (DE) Hinweise zur Sicherheit

English

- Remove the batteries before any maintenance !
- **WARNING**, there is a risk of explosion if a battery is replaced by an improper model !
- Observe polarity when setting up the batteries!
- Do not litter the batteries when they are used! Dispose of them properly according to Lithium Metal requirements

Français

- Retirez les piles avant toute opération de maintenance !
- Attention ! Il y a un risque d'explosion si la batterie utilisée est remplacée par un mauvais modèle !
- Respectez la polarité lors de la mise en place des piles !
- Ne jetez pas les batteries usagées ! Ramenez-les à votre installateur ou à un point de collecte spécialisé.

Deutsch

- Batterien vor jeglichen Wartungsarbeiten entfernen!
- Vorsicht, es besteht Explosionsgefahr, wenn eine Batterie durch eine Batterie falschen Modells ersetzt wird!
- Achten Sie beim Einsetzen der Batterien auf die Polung!
- Entsorgen Sie Batterien nicht im normalen Haushaltsmüll! Bringen Sie Ihre verbrauchten Batterien zu den öffentlichen Sammelstellen.

FCC Regulatory Information for USA and CANADA

FCC Part 15.21 Changes or modifications made to this equipment not expressly approved by RSI Video Technologies may void the FCC authorization to operate this equipment.

FCC Part 15.105 Class B

This equipment has been tested and found to comply with the limits for a Class B digital device, pursuant to Part 15 of the FCC Rules. These limits are designed to provide reasonable protection against harmful interference in a residential installation. This equipment generates, uses and can radiate radio frequency energy and, if not installed and used in accordance with the instructions, may cause harmful interference to radio communications. However, there is no guarantee that interference will not occur in a particular installation. If this equipment does cause harmful interference to radio or television reception, which can be determined by turning the equipment off and on, the user is encouraged to try to correct the interference by one or more of the following measures:

- > Reorient or relocate the receiving antenna.
- > Increase the separation between the equipment and receiver.
- > Connect the equipment into an outlet on a circuit different from that to which the receiver is connected.
- > Consult the dealer or an experienced radio/TV technician for help.

Radio frequency radiation exposure information according 2.1091 / 2.1093 / OET bulletin 65

This equipment complies with FCC radiation exposure limits set forth for an uncontrolled environment. This equipment should be installed and operated with minimum distance of 20 cm between the radiator and your body.

Cet équipement est conforme aux limites d'exposition aux rayonnements IC établies pour un environnement non contrôlé.

Cet équipement doit être installé et utilisé avec un minimum de 20 cm de distance entre la source de rayonnement et votre corps.

This transmitter must not be co-located or operating in conjunction with any other antenna or transmitter.

This device complies with Part 15 of the FCC Rules and with Industry Canada licence-exempt RSS standard(s)

Operation is subject to the following two conditions:

- 1 This device may not cause harmful interference, and
- 2 This device must accept any interference received, including interference that may cause undesired operation.

Le présent appareil est conforme aux CNR d'Industrie Canada applicables aux appareils radio exempts de licence.

L'exploitation est autorisée aux deux conditions suivantes :

- 1 L'appareil ne doit pas produire de brouillage, et
- 2 L'utilisateur de l'appareil doit accepter tout brouillage radioélectrique subi, même si le brouillage est susceptible d'en compromettre le fonctionnement..



This symbol on the product or on its packaging indicates that this product should not be treated as household waste. It must be handed over to the applicable collection point for the recycling of electrical and electronic equipment. By ensuring this product is disposed of correctly, you will help prevent potential negative consequences for the environment and human health. The recycling of materials will help to conserve natural resources. For more information about recycling of this product, please contact your local municipality, your waste disposal service or the company that installed the product.



The EC declaration of conformity of this product is available by flashing this QR code.

ISMV STREAMING MOTIONVIEWER

ELECTRICAL PROPERTIES

Panel compatibility	
Streaming option	W panels
Without streaming option	XL, XLL, XT, XV, Visio and their variants
Battery	
	3 CR123A 3V Lithium batteries
Nominal voltage	3 V
Low battery treshold	2.7 V
Estimated battery life	Up to 3 years
Current consumption	
Standby (1h average)	100 µA
Max	300 mA

RADIO PROPERTIES

RF S2View® technology	
Radio type	Spread spectrum RF bidirectional
Operating frequency	<ul style="list-style-type: none"> • 868MHz - ISMV 200 (Europe, Africa, Asia) • 915 MHz - ISMV 601 (USA, Canada, South america) • 920 MHz - ISMV 702 (Australia, South america)
Transmission security	AES algorithm encryption
Supervision	Radio, batteries, tamper
Radio antenna	Integrated

VIDEO PROPERTIES

Camera	
Angle	90°
Sensor type	CMOS
Lighted video	Programmable : Color or B&W
Night vision video	Black & white automatic infrared
Infrared illumination	Automatic with 2 IR LEDs
Infrared illumination distance	7m
Video	
Video format	H264 (MPEG if not available)
Framerate	5 images per second
Resolution	QVGA (320x240)
Video file size	Up to 230 kB



DETECTION PROPERTIES

Infrared detection specifications	
Technology	Passive-infrared DSP
Type	Dual element sensor
Lens	Fresnel
Detection angle	90°
Detection range	Up to 10m
Initialization time	10 seconds
Recovery time	90 seconds
Tamper	
Tamper detection	Cover and wall tamper, electromagnetic immunity

BOX

Physical properties	
Material	ABS UL94-V0
Environmental properties	
Operating temperature	-10°/+55°C
Max relative humidity	75%, without condensing
Installation / Mounting	
Mounting height	2,10 m
Wall mounting	2 screws
Box sealing	With screw

STANDARDS AND APPROVALS

868 MHz	ISMV 200
 	
Compliant with annex IV from the R&TTE 1999/5/CE directive	
NF&A2P – 2 boucliers – suivant le référentiel NF324-H58 Matériels de sécurité électronique, détection d'intrusion DETECTEUR DE MOUVEMENT A INFRAROUGE PASSIF	
Marque commerciale	Videofied
Référence produits	ISMV 200
N° de certification	2623200010
NF EN50131-2-2 Grade 2	2008
RTC 50131-2-2	2015
NF EN50130-4	2011
NF EN50130-5 Environment Class II	2011

Certification organisation :
CNPP Cert.
 Route de La Chapelle Réanville CS22265
 F—27950 SAINT MARCEL
 Tel : +33(0)2.32.53.63.63
 Fax: +33(0)2.32.53.64.46
 Sites Internet : www.cnpp.com
 Email : certification@cnpp.com

Certification organisation :
AFNOR Certification
 11, rue François de Pressensé
 93571 Saint Denis La Plaine Cedex
 Tel : +33(0)1.41.62.80.00
 Fax: +33(0)1.49.17.90.00
 Sites Internet : www.marque-nf.com
 E-mail : certification@afnor.org

EMEA SALES

23, avenue du Général Leclerc
 92340 BOURG-LA-REINE
 FRANCE
 E-Mail : emeasales@rsivideotech.com

North American Headquarters

1375 Willow Lake Blvd, Suite 103
 Vadnais Heights, MN 55110
 USA
 E-Mail : usasales@rsivideotech.com

