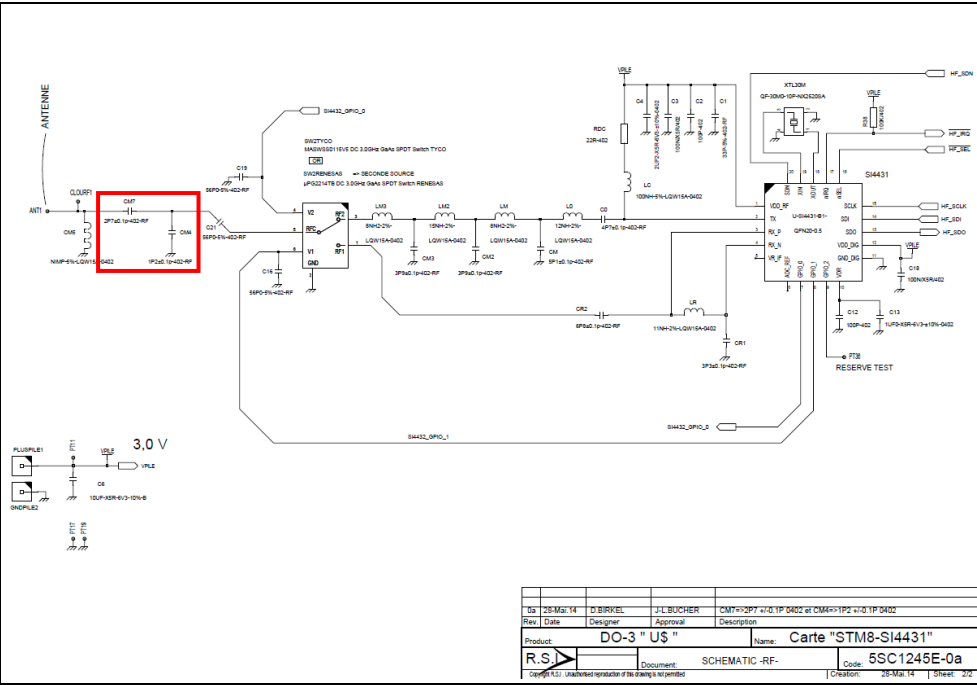
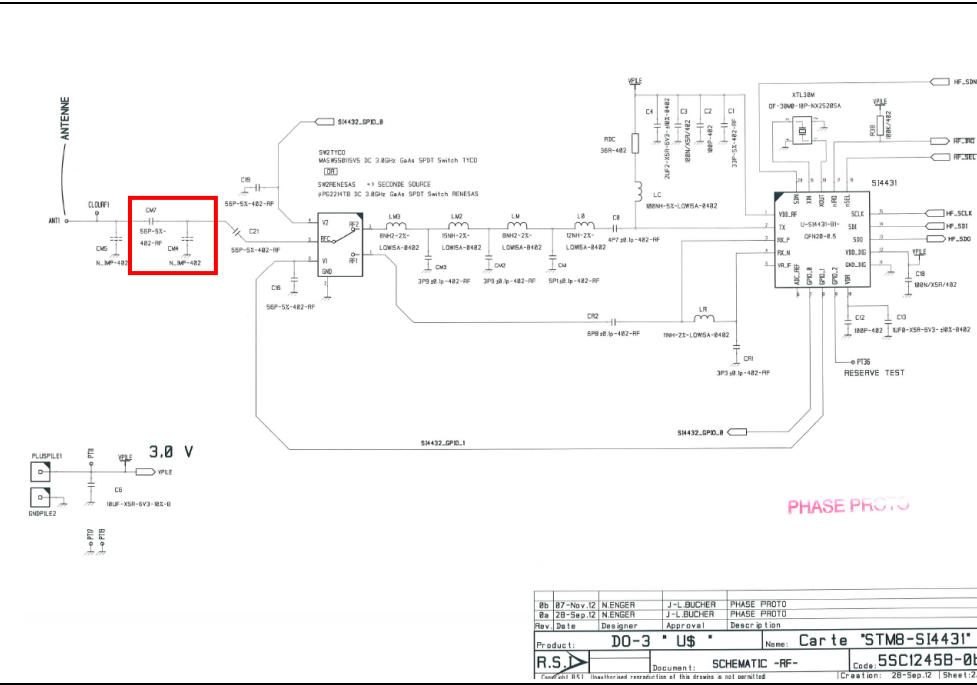


Differences between an old and new PCB

Old PCB – 5CA1245B-0c

New PCB – 5CA1245E-0a

Radio part



Modification of components

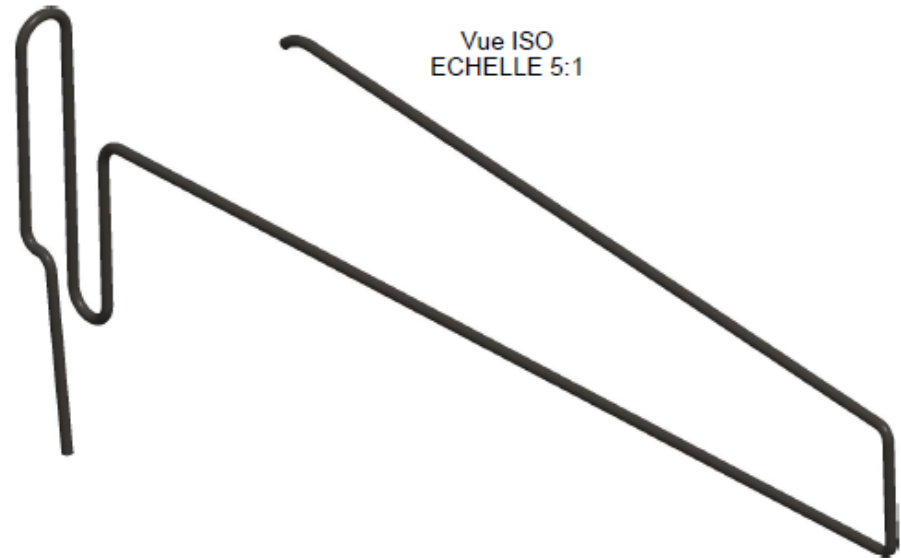
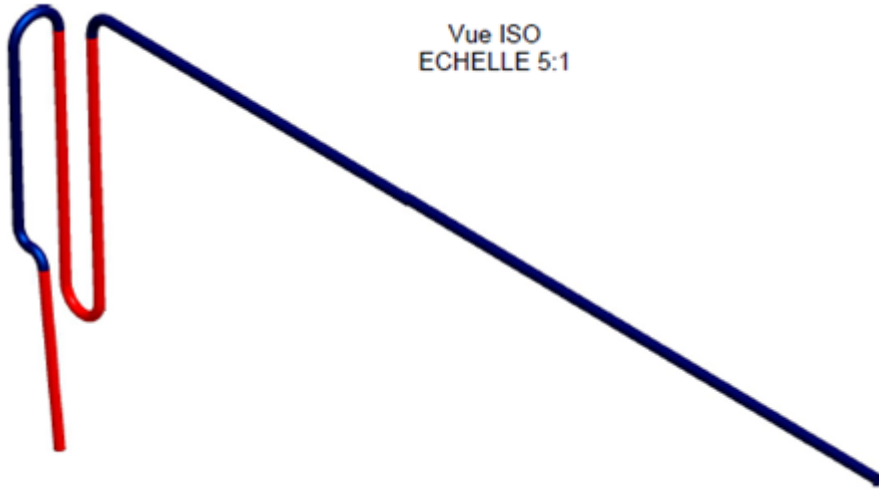
- CM4 : 6,8nH ±0,2nH (inductivity) → 1,2pF ±0,1pF (capacitor)
- CM7 : 18pF 1% (capacitor) → 2,7pF ±0,1pF (capacitor)

CM4 and CM7 were modified for antenna adaptation.

Old PCB – 5CA1245B-0c

New PCB – 5CA1245E-0a

Radio part



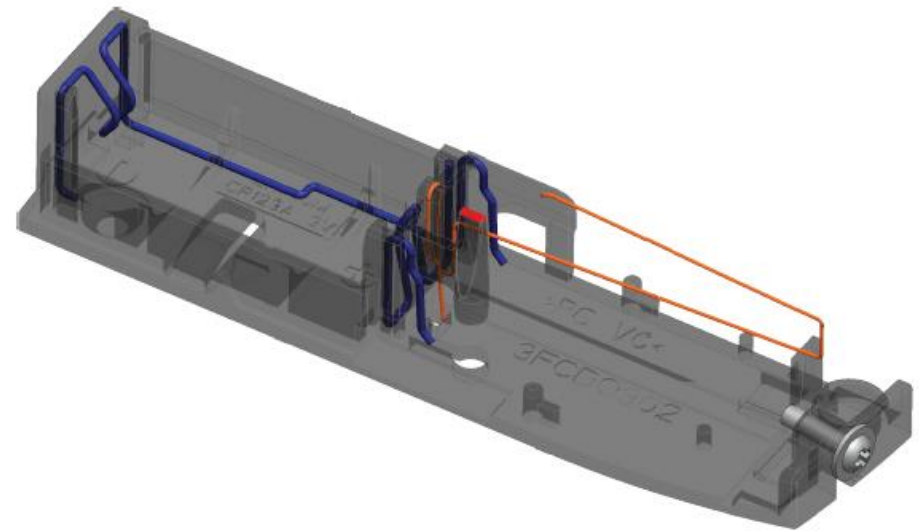
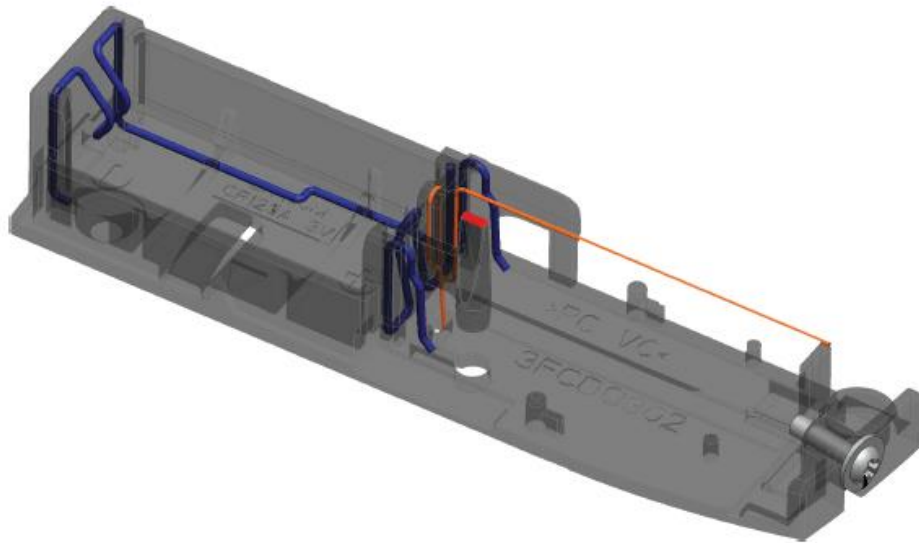
Modification of component

- Size of radio antenna was modified, the new is taller.

Old PCB – 5CA1245B-0c

New PCB – 5CA1245E-0a

Radio part



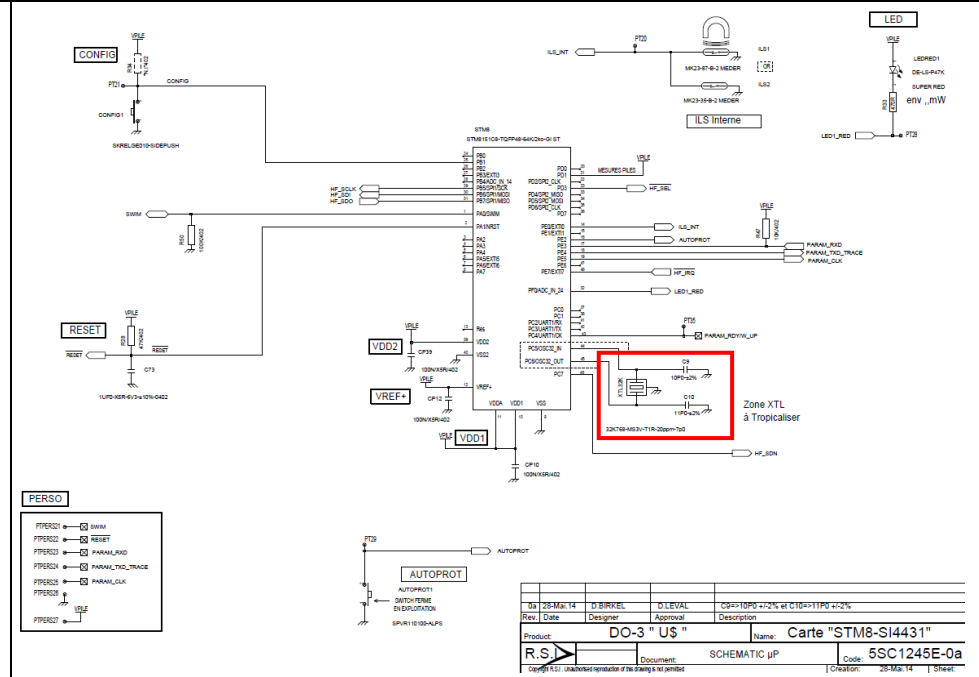
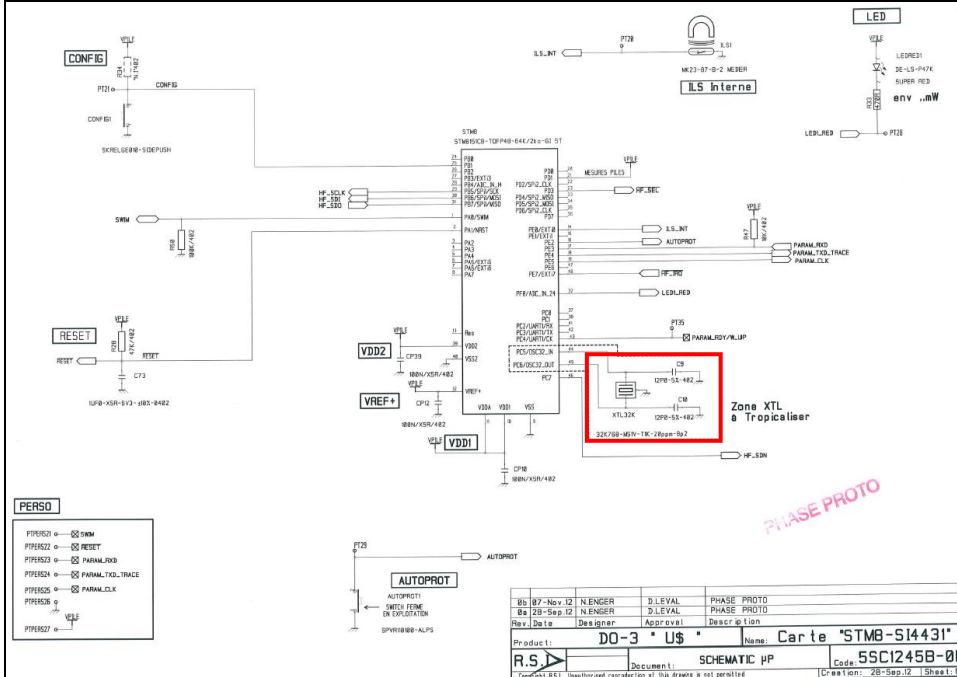
Modification of component

- Size of radio antenna was modified, the new is taller.

Old PCB – 5CA1245B-0c

New PCB – 5CA1245E-0a

µP part



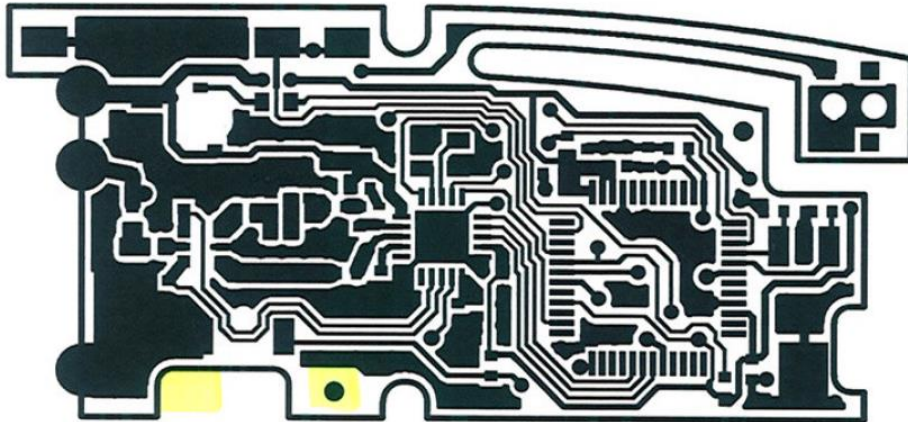
Modification of components

- MS1VT1K-8P2 (quartz 32kHz) → MS3V-T1R (quartz 32kHz)
- C9 : 12pF ±5% (capacitor) → 10pF ±2% (capacitor)
- C10 : 12pF ±5% (capacitor) → 11pF ±2% (capacitor)

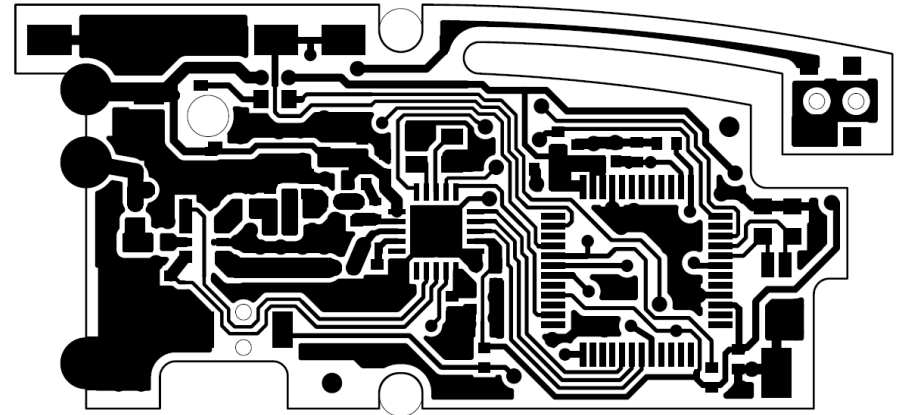
Old PCB – 5CA1245B-0c

New PCB – 5CA1245E-0a

Top Side



5CU0763B-0b1



5CU0763E-0e

- Some very minor modifications