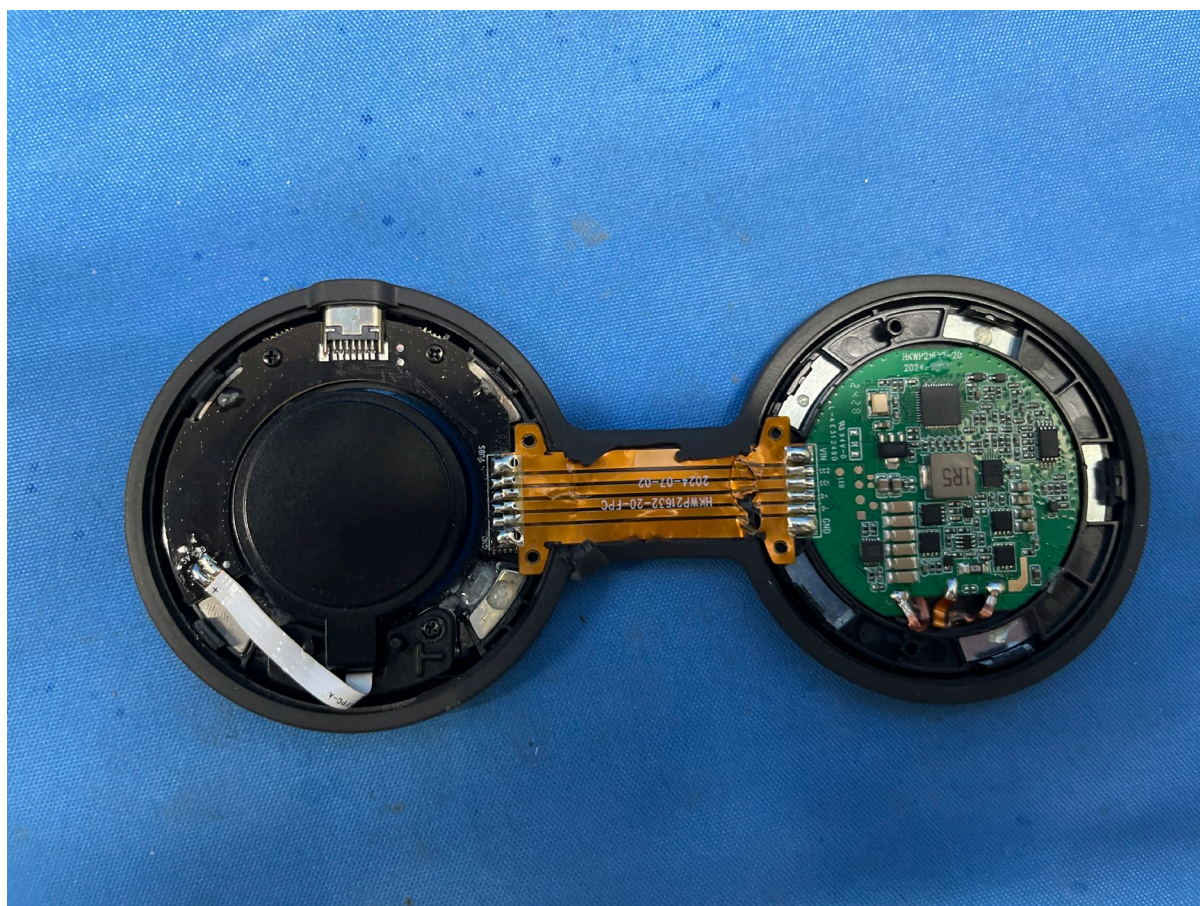


INTERTEK TESTING SERVICES

Equipment Photographs

(Internal)

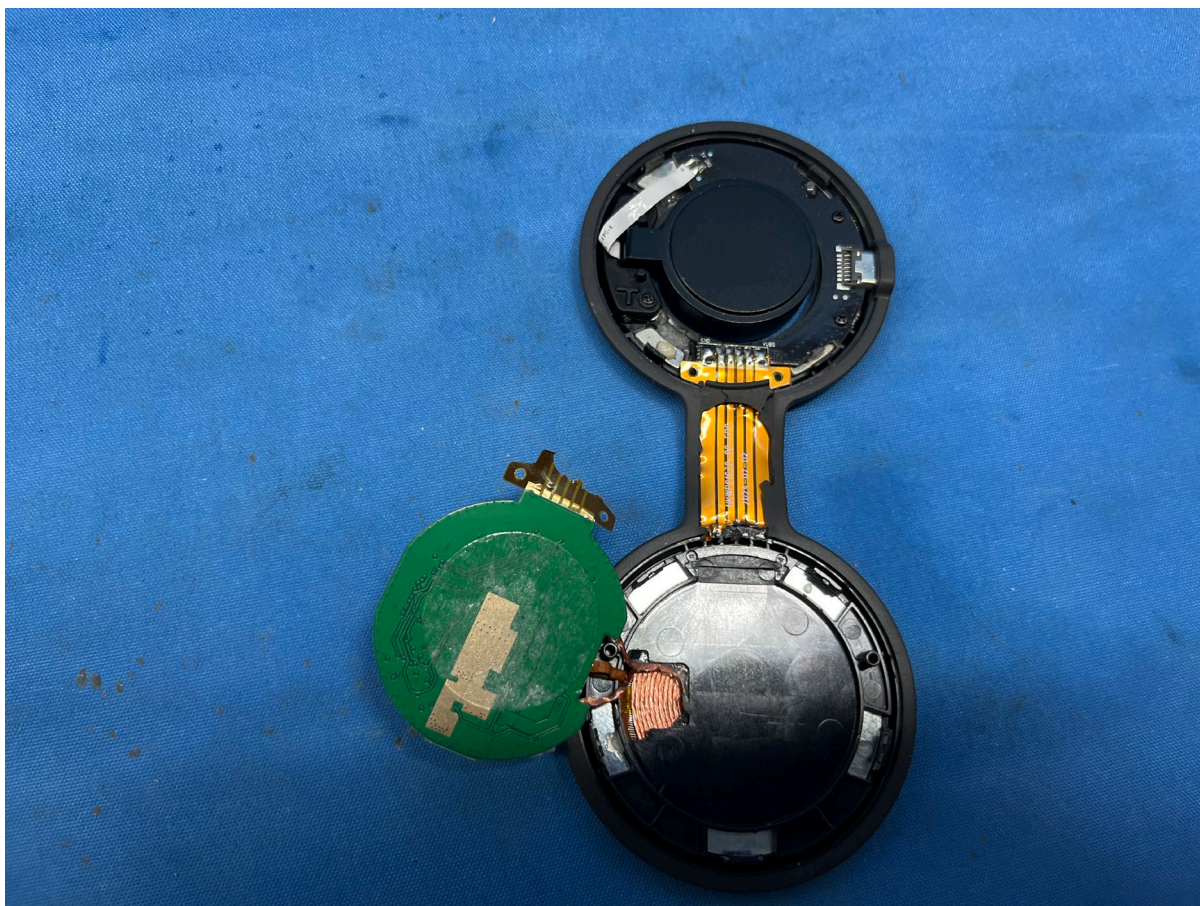


The left coil is the smartwatch charge pad while the right coil is the smartphone charge pad

INTERTEK TESTING SERVICES

Equipment Photographs

(Internal)

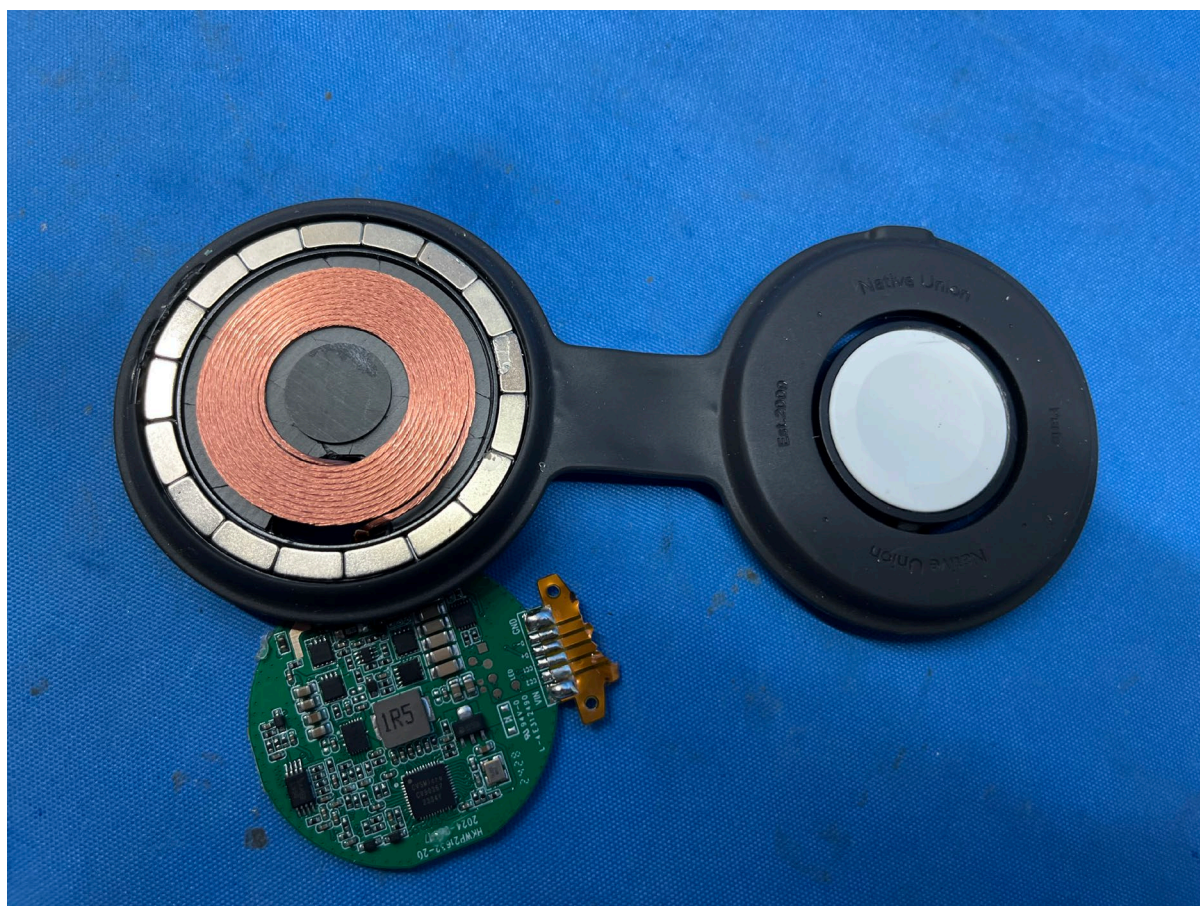


The upper coil is the smartwatch charge pad while the lower coil is the smartphone charge pad

INTERTEK TESTING SERVICES

Equipment Photographs

(Internal)

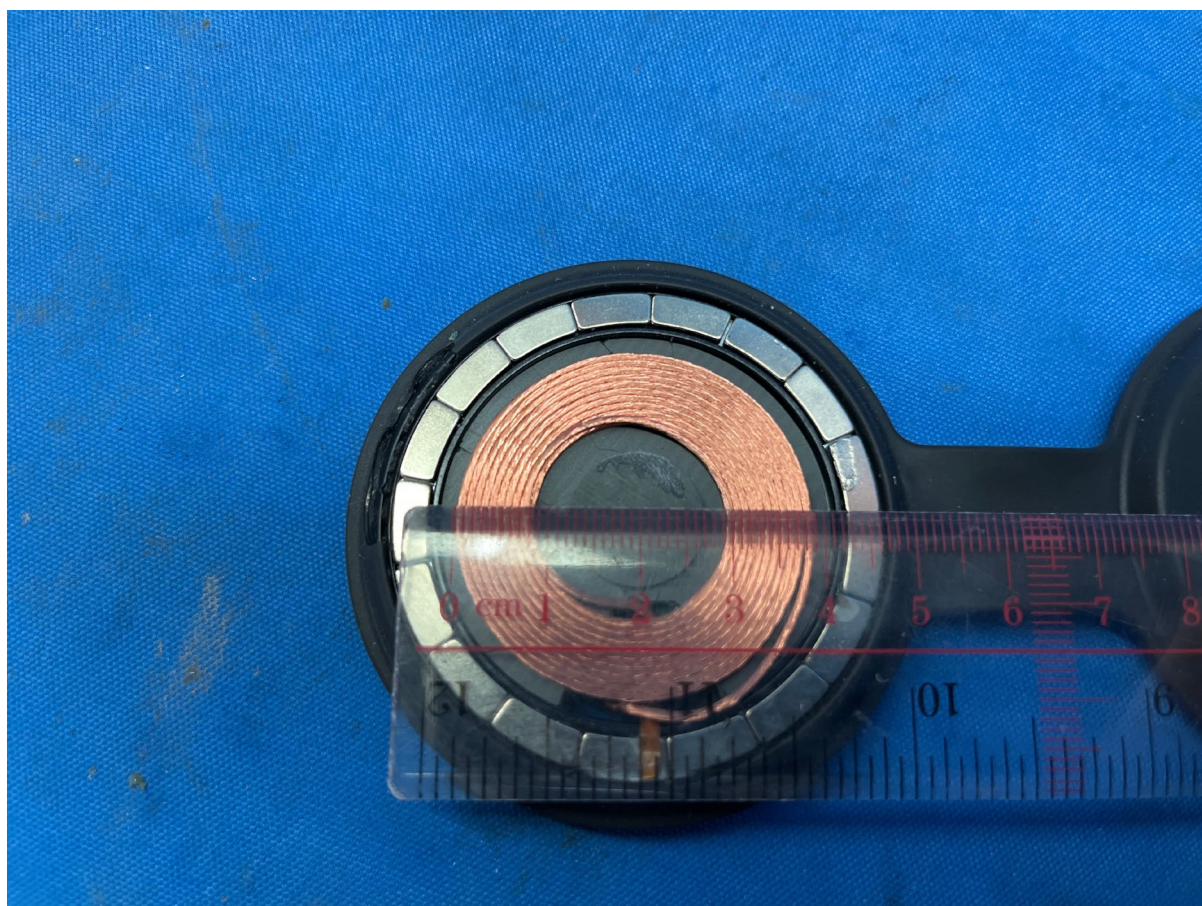


The left coil is the smartphone charge pad while the right coil is the smartwatch charge pad

INTERTEK TESTING SERVICES

Equipment Photographs

(Internal)

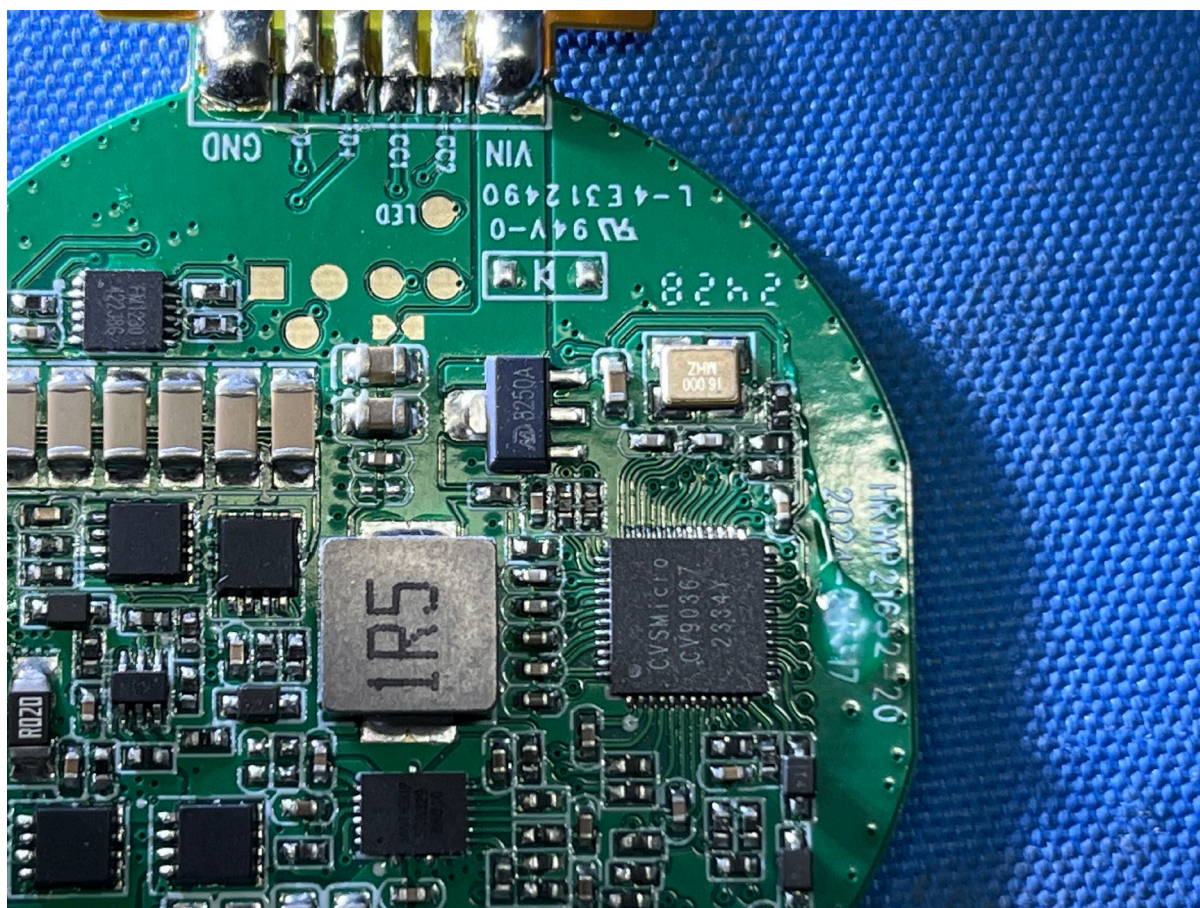


This coil is the smartphone charge pad

INTERTEK TESTING SERVICES

Equipment Photographs

(Internal)



This is the PCB of smartphone charge pad

INTERTEK TESTING SERVICES

Equipment Photographs

(Internal)



This is PCB of smartwatch charge pad

INTERTEK TESTING SERVICES

Equipment Photographs

(Internal)



This is PCB of smartwatch charge pad

INTERTEK TESTING SERVICES

Equipment Photographs

(Internal)

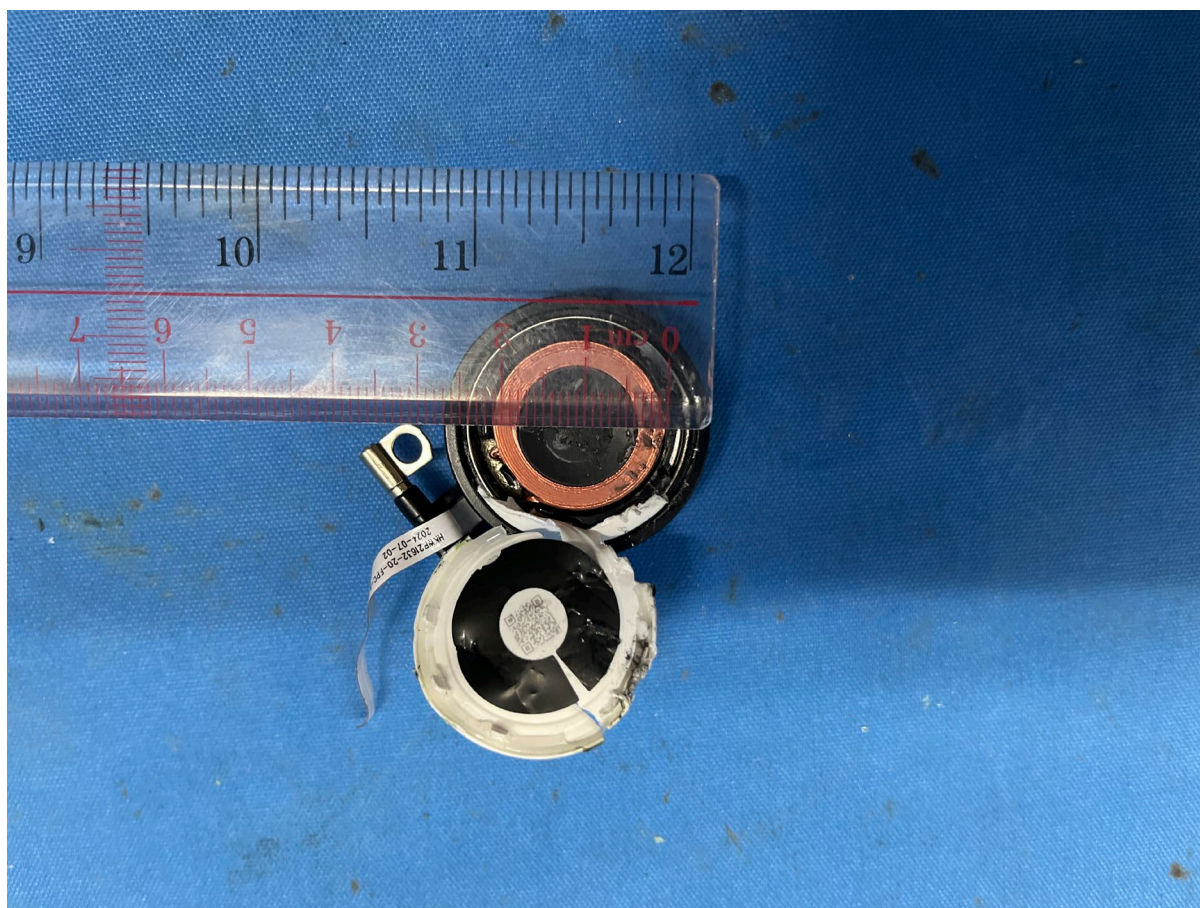


This coil is the smartwatch charge pad

INTERTEK TESTING SERVICES

Equipment Photographs

(Internal)



This coil is the smartwatch charge pad

INTERTEK TESTING SERVICES

Equipment Photographs

(Internal)



INTERTEK TESTING SERVICES

Equipment Photographs

(Internal)



INTERTEK TESTING SERVICES

Equipment Photographs

(Internal)



INTERTEK TESTING SERVICES

Equipment Photographs

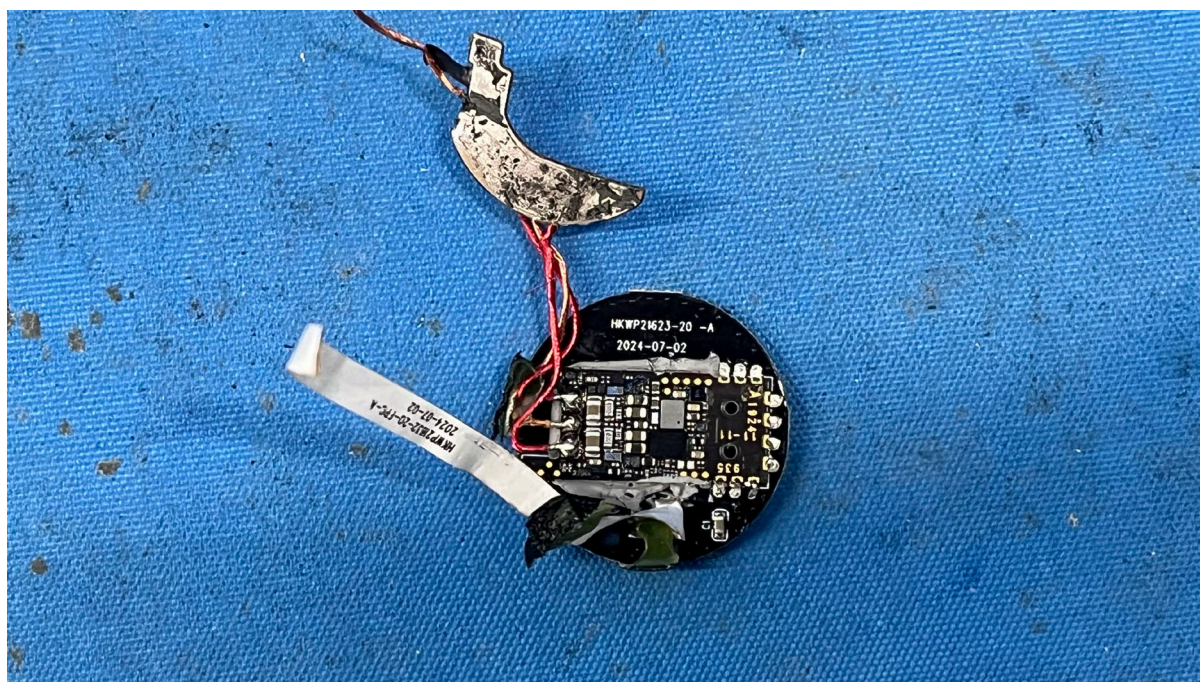
(Internal)



INTERTEK TESTING SERVICES

Equipment Photographs

(Internal)

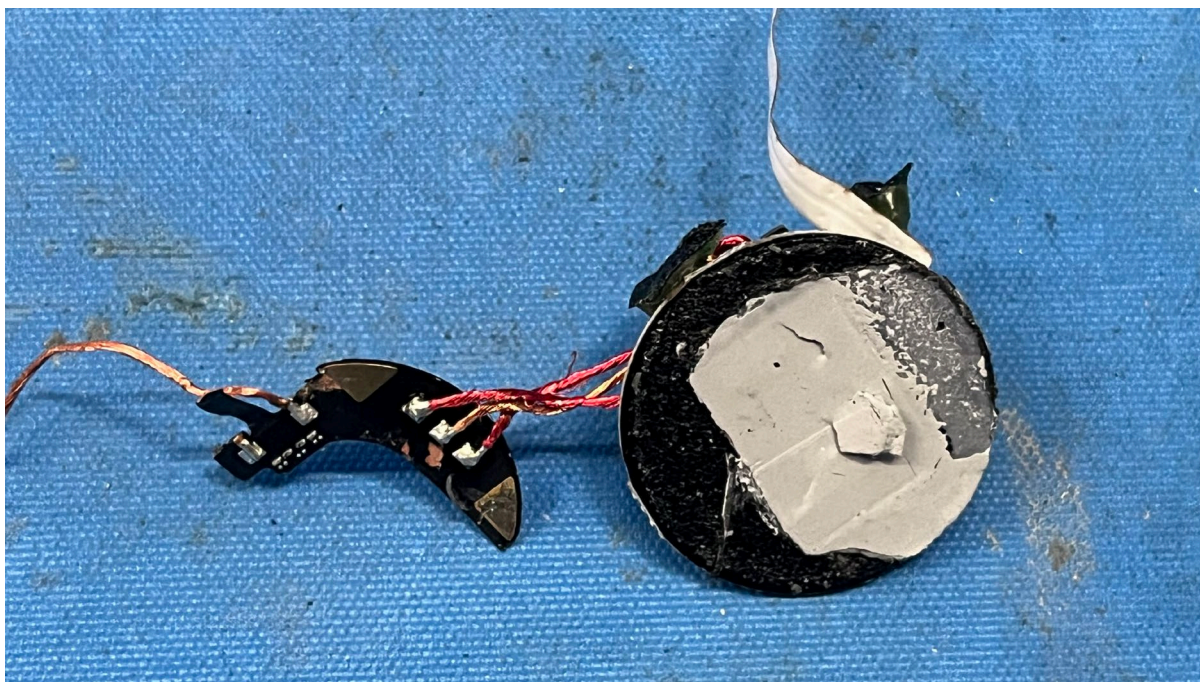


This is the PCB of the smartwatch charge pad

INTERTEK TESTING SERVICES

Equipment Photographs

(Internal)



This is the PCB of the smartwatch charge pad