

### 1.6 User Manual



- English
- Français
- Deutsch
- Español
- Italiano
- 中國語
- 日本語

## MM03i Bluetooth® Wireless Handset+Base

Instruction Manual  
 Manuel d'utilisation  
 Bedienungsanleitung  
 Manual de instrucciones  
 Manuale di istruzioni  
 使用手冊  
 取扱説明書

### WELCOME

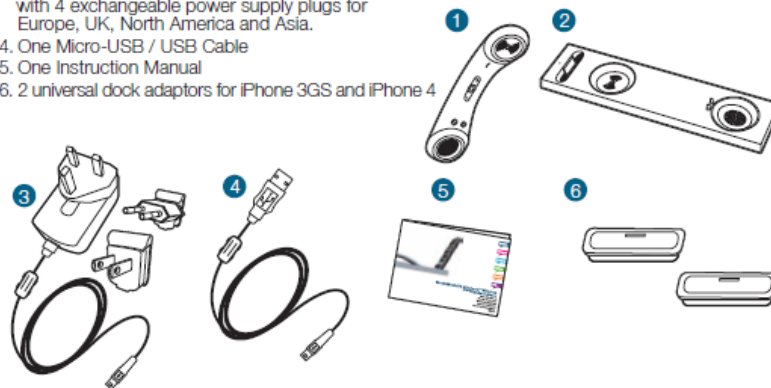
Thank you for buying the MM03i handset, you will love this new experience.

For the most up-to-date information, be sure to check our Web site at [www.nativeunion.com](http://www.nativeunion.com)



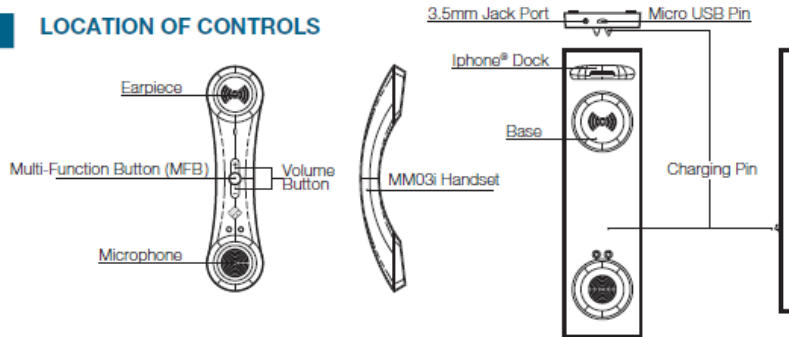
### WHAT YOU GET IN THIS PACKAGE

1. One MM03i Bluetooth® Wireless handset
2. One MM03i base
3. One multi-country AC adaptor with wire and micro USB with 4 exchangeable power supply plugs for Europe, UK, North America and Asia.
4. One Micro-USB / USB Cable
5. One Instruction Manual
6. 2 universal dock adaptors for iPhone 3GS and iPhone 4



**2**

**LOCATION OF CONTROLS**



**How to use the MM03i Bluetooth® Wireless Handset:**

**PLEASE READ THESE INSTRUCTIONS CAREFULLY** before using your new handset

**IMPORTANT SAFETY INSTRUCTIONS READ BEFORE OPERATING EQUIPMENT**

This product was designed and manufactured to meet strict quality and safety standards. There are, however, some installation and operation precautions which you should be particularly aware of :

1. Read these instructions.
2. Keep these instructions.
  
3. Heed all warnings.
4. Follow all instructions.
5. Do not use this apparatus near water.
6. Clean only with dry cloth.
7. Do not install near any heat sources such as radiators, heat registers, stoves, or other apparatus (including amplifiers) that produce heat
8. Only use attachments/accessories specified by the manufacturer.

**3**

You must first locate and identify the buttons : please check the "Location of controls" section to help you.

**CONNECTING YOUR MM03i TO YOUR IPHONE® (OR ANY BLUETOOTH® WIRELESS TECHNOLOGY MOBILE PHONE.)**

**STEP1**

**CHARGE YOUR MM03i**

- a. Connect the power adaptor provided to the base of the MM03i



4

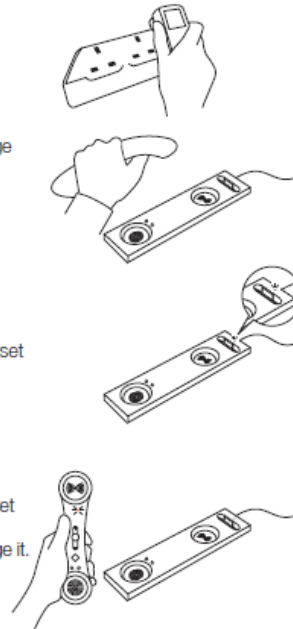
b. Plug the AC adaptor into a power outlet.

c. Finally, place the handset in the charging base to charge the battery\*

\* The MM03i comes with a build-in rechargeable battery. It takes two or three hours to fully recharge the battery.

The white LED of the base will turn on anytime the handset is on the base, indicating that it is charging properly.

When your MM03i is low battery, the red LED of the handset will start blinking and it will play low battery alert tone every minute. Place the handset back to the base to charge it.



NOTE :

You can also use the micro-usb / usb cable provided to plug your MM03i directly to the USB port of your computer to recharge it.

Depending on the computer, the charge time may vary. Please find computer charging sequences below :

- If your computer supply enough power : the iPhone® and the MM03i will be charged simultaneously.
- If your computer cannot supply enough power : the iPhone® will be charged first, and the handset will start charging once the iPhone® will be fully recharged

5

STEP2

TURN YOUR MM03i ON

To turn on your MM03i, you must press and hold the MFB button for 2 seconds.

When your MM03i is on, you will hear a sound and the blue LED will turn on.



STEP3

TURN YOUR MM03i OFF

To turn off your MM03i, you must press and hold the MFB button for 2 seconds.

When your MM03i is off, you will hear a sound and all LED will turn off.



6

**STEP4**  
**PAIRING THE MM03i BLUETOOTH® WIRELESS HANDSET WITH YOUR IPHONE®**  
**(OR ANY BLUETOOTH® WIRELESS TECHNOLOGY MOBILE PHONE.)**

First of all, you must make sure that your mobile phone has *Bluetooth®* Wireless capability. If you are not sure whether it does, please consult the user's instructions of your mobile phone.

**IMPORTANT :** Please note that your MM03i must be power off before starting the pairing process.

- a) To pair your MM03i *Bluetooth®* Wireless handset with your mobile phone, you must press and hold the MFB button for 5 seconds, until you hear a sound and see the red and blue LED flashing alternately.
- Your MM03i *Bluetooth®* Wireless handset is now ready to be paired.



- b) Make sure the *Bluetooth®* Wireless function is activated on your mobile phone, and instruct your mobile phone to search for new *Bluetooth®* devices. (check the user's instructions of your mobile phone if you need more information.)



- c) Place your MM03i *Bluetooth®* Wireless handset within 1 meter away from your mobile phone.



7

- d) Your mobile phone should search for all *Bluetooth®* devices and the name "MM03i" should appear on the *Bluetooth®* device list.

- e) Select "MM03i" and enter "0000" if a password is required.



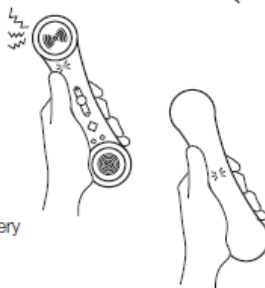
The MM03i will make a sound and the blue LED will light on, indicating the pairing process is now completed and the phone connected.

You will also see a white LED appearing on the back of the handset. This LED is a visual indication, to tell you that the MM03i is now connected with your mobile phone.

**Note :**

Some phones will connect to the MM03i automatically. If your phone prompts you to confirm whether you want to connect to the MM03i, accept the connection request. If your phone does not connect to the MM03i then use your phone's Bluetooth menu to initiate a connection manually.

If you have connected the MM03i with an iPhone, a MM03i battery icon will appear on your phone's taskbar indicating the current battery level of the MM03i. You can use now your MM03i !



8

**ATTENTION :** The *Bluetooth*® Wireless technology signal reception works up to a 10m range (open area). If your mobile phone moves out of range then the connection will stop and the MM03i will be automatically disconnected. The top white LED will turn off to indicate this disconnection.

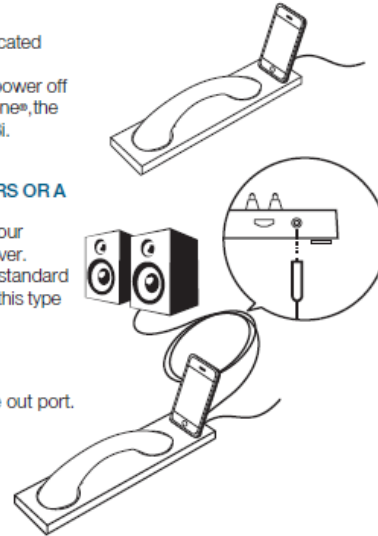
**CHARGING YOUR IPHONE**

Place your iPhone® in the dedicated iPhone dock located on the base of the MM03i.  
Your iPhone® will be charged in both power on and power off modes until it is fully charged. To recharge your iPhone®, the AC adapter must be connected to the base of MM03i.

**PLAYING MUSIC THROUGH EXTERNAL SPEAKERS OR A STEREO VIA THE 3.5MM LINE-OUT PORT**

Using the MM03i base, you can play music from your iPhone® through external speakers or a stereo receiver. You need an audio cable (available separately) with a standard 3.5 millimeter stereo plug (many external speakers use this type of cable).

1. Place your iPhone® in the MM03i base dock.
2. Connect the speakers or stereo to the 3.5mm line out port.
3. Use the iPhone® controls to play music.



**USE YOUR MM03i WITH YOUR IPHONE® (OR ANY OTHER BLUETOOTH® WIRELESS TECHNOLOGY MOBILE PHONE)**

9

**MAKING A CALL**

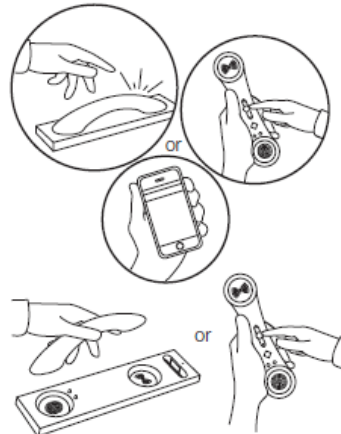
To make a call with your MM03i, simply dial the number on your mobile phone keypad as you normally would. When the call connects, you will now speak and listen through the MM03i. If you wish to transfer the call to your mobile phone, press and hold the volume control '+' button for 2 seconds.

**ANSWERING AN INCOMING CALL**

To answer a call on your MM03i simply pick up the handset from the base and the call will be connected automatically. If the handset is not on the base at the time of the call, press the MFB button once to answer the call. Answering the call directly on your mobile phone interface will allow you to speak and listen through your mobile phone. If you wish to transfer the call to MM03i, press and hold the volume control '+' button for 2 seconds.

**DISCONNECTING A CALL**

To hang up a call on your MM03i, simply place the handset back on the base or press the MFB button once.



10

**INFORMATION:** MM03i enables a *Bluetooth®* connection to stay paired even if the MM03i handset or the mobile phone is switched off and on again. Please also note that MM03i can memorize up to 4 devices. This feature allows *Bluetooth®* re-connection when either one of the Bluetooth device is switched off and on again. MM03i will auto-reconnect to the last connected device. If last connected device is not available, it will try to connect to the next device on the list.

## OTHER FUNCTIONS OF THE MM03i *BLUETOOTH WIRELESS* HANDSET

### SYNCING YOUR IPHONE®

Your MM03i can also synchronize your iPhone® with your computer :

- a) Unplug the A/C adaptor from the power outlet.
- b) Remove the USB cable from the A/C adaptor, and plug it into the USB port of your computer.
- c) The synchronization process between your computer and your iPhone® will automatically start whenever you iPhone® will be docked.

**PLEASE NOTE THAT WHILE THE MM03i IS CONNECTED TO THE COMPUTER THROUGH THE USB CABLE, NEITHER IPHONE® NOR MM03i HANDSET ARE CHARGING. THIS IS ONLY FOR SYNCHRONIZATION.**

### REJECTING INCOMING CALLS

To reject a call on your MM03i, press and hold the MFB button for 2 seconds.

11

### VOLUME CONTROL

During a call, to adjust the volume on your MM03i, simply press the volume control '+' button to increase the volume or '-' button to decrease it.

### REDIAL LAST NUMBER

To redial the last number called on your MM03i, double press the MFB button.

### END ACTIVE CALL AND ACCEPT WAITING CALL

During a call, to end the active call and accept the waiting incoming call on your MM03i, press the MFB button once.

### HOLD ACTIVE CALL AND ACCEPT WAITING CALL

During a call, to hold your active call and accept the waiting incoming call on your MM03i, double press the MFB button. Please do the same again if you want to switch again between the two calls.

### VOICE ACTIVATED DIALING

Your MM03i also support "voice activated" dialing with certain models of mobile phones. Before you use this function, you need to set up "voice-tags" on your mobile phone. To find out how to do this, please refer to the instruction manual of your mobile phone.

To make a voice activated call, press and hold for the volume control '+' button for 2 seconds. When you hear a "beep", say the voice tag of the person.

If your mobile phone has trouble recognizing the voice tag, please repeat the process again.

12

**MUTE**

During a call, press volume control '+' and '-' buttons together to mute the microphone. Press again to unmute.

**CLEAR PAIRED DEVICE LIST**

To clear the list of all paired devices, you will need to perform Factory Reset. To do so, switch off the MM03i place it on the charging base, then press and hold MFB button for 5 seconds while in charging state until you hear 2 'beep' tones.

**CHOOSE YOUR MM03i RINGTONE**

You can define how you want your MM03i to ring on incoming calls. You have a choice of 15 ringtones.

- To enter the ringtone selection mode on you MM03i, press and hold the volume control '+' and '-' buttons together for 2 seconds. Your MM03i will then play the current ringtone
- To go through the ringtone list, press the volume control '+' button to play the next ringtone and press the volume control '-' button to play the previous ringtone.
- To select the current playing ringtone and leave the ringtone selection mode, press and hold the volume control '+' and '-' buttons together for 2 seconds.
- The ringtone volume can be adjusted anytime while the MM03i is in standby. Press the volume control '+' button to increase the volume or '-' button to decrease it.

**INFORMATION:** Please note that the MM03i also enables a *Bluetooth*® connection with any laptop or desktop (Mac or PC) featured with a *Bluetooth*® Wireless Technology (supporting HS or HF profile) to work with Skype, Google Talk or other VOIP services. To connect your MM03i with your computer, you need to go through the pairing process (please refer to the instruction manual of your computer) as explain previously, please see 'PAIRING THE MM03i BLUETOOTH® WIRELESS HANDSET WITH YOUR BLUETOOTH® WIRELESS TECHNOLOGY MOBILE PHONE.'

If you experience problem such as hearing the sound coming out from the computer instead of your MM03i, please check that your MM03i has been selected on the "Audio Preferences" of your computer or VOIP software.

13

**AUTOMATIC RECONNECTION**

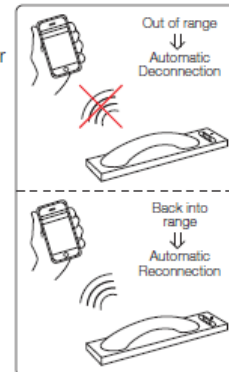
The MM03i is designed to reconnect automatically to the last 2 connected devices in its memory. If you take your phone out of range of the MM03i for more than 30 seconds (without turning the MM03i off), and then come back into range the MM03i will search for your phone and reconnect automatically within 1 minute.

If your phone is not one of the last two connected phones, you may have to reconnect to the MM03i using your phone's Bluetooth menu.

In addition, the MM03i will not reconnect automatically if you manually disconnected your phone from the MM03i using your phone's Bluetooth menu. In this case you will need to use your phone's Bluetooth menu to reconnect.

By default, certain phones (including Blackberry phones) will prompt you to confirm whether you want to accept the connection from the MM03i.

If your phone keeps prompting you about the connection to the MM03i, then you should change the setting on your phone so that it considers the MM03i as a trusted or authorized connection (please check your phone's instruction manual)



14

(On certain phones you may need to change additional security setting to allow the phone and the MM03i to reconnect to each other automatically every time they come back into range. Check your phone's instruction manual for more details on how to change this setting on your phone.)

#### PAIRING AN ADDITIONAL DEVICE

You only need to pair your phone with the MM03i once. Once you have paired your phone with the MM03i they will reconnect to each other in future without you having to repeat the pairing process. If you need to pair an additional phone, simply repeat the process 'Pairing the MM03i Bluetooth wireless handset with your bluetooth wireless technology mobile phone.'

The MM03i can store pairing information for up to 4 Bluetooth devices. If you pair a fifth device, it will replace the stored pairing information for the device that has not been connected to the MM03i for the longest time.

You can connect the MM03i to two Bluetooth devices at the same time. For more information, please see 'Using more than one Bluetooth wireless device at the same time (Multipoint)'

#### USING MORE THAN ONE BLUETOOTH DEVICE AT THE SAME TIME (MULTIPOINT)

The MM03i supports Multipoint technology. This means that you can use the MM03i with two different mobile phones or Bluetooth devices at the same time. If either phone rings, you can answer it with the MM03i.

#### If I have two phones paired and connected, which one will be used ?

When you have two phones connected to the MM03i:

- You can answer calls received on either phone with the MM03i.
- If you initiate a call through the MM03i (by using button to either redial the last call or use your phone's voice dial feature), then the call will happen on whichever phone is currently designated as the primary phone. As explained below, this is determined by a combination of connection order and active calls.

#### Which phone is the primary phone?

The primary phone is either the phone that is connected to the MM03i most recently or the phone that had the last active call:

- When your phones connect to the MM03i, the one that connects last becomes the primary phone.
- Every time you have an active call through the MM03i (incoming or outgoing), the phone with the call becomes the primary phone.
- If both phones go out of range and come back into range together then the primary phone will be whichever one happens to reconnect last. In this case you will not be able to tell which phone is the primary until you either initiate a call through the MM03i or receive a call on one of the phones.

#### Setting the Primary Phone

You can force the MM03i to change the primary phone by doing any of the following:

- Answer an incoming call : the phone receiving the call will become the primary phone.
- Initiate a call from one of the phone : the phone making the call will become the primary phone.

15

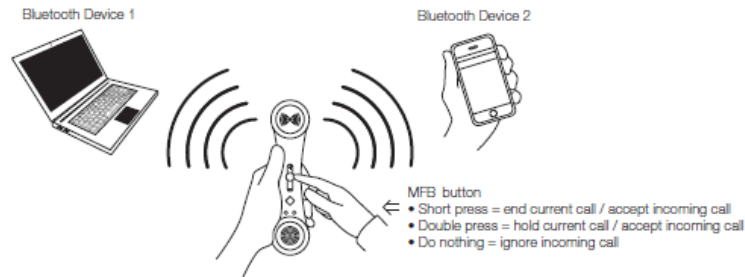


16

#### Multiple Calls in a multipoint connection scenario

The MM03i does not allow you to call from 2 phones simultaneously. If you receive a call from Bluetooth device 2 while you are already on an ongoing call on Bluetooth device 1, you will hear a special ringtone in the MM03i :

- Press MFB button once to end the current call and accept the incoming call.
- Double press MFB button to hold the current call and accept the incoming call.
- Or do nothing if you want to ignore the incoming call and continue with the current call.



#### TROUBLE SHOOTING

No Connection between your MM03i and your Mobile Phone ?

The first thing to do is to make sure that your mobile phone and the MM03i have recognized each other and are properly paired together.

The next thing to check is if the MM03i and your mobile phone are within a 10m range maximum (open area)

**Your iPhone® does not fit into the built-in universal dock ?**

There might be some obstructions on the dock. Check whether there are any obstructions on the connector and on the dock. If everything is secured, place your iPhone® back into the dock.

**Your iPhone® is not charged even though it is in the dock ?**

Your iPhone® might not be properly docked. Take your iPhone® out of the dock, and remove any obstructions on the connector from the dock and on your iPhone®. Place your iPhone® back into the dock again.

**Your iPhone® is frozen or locked up ?**

Check whether your iPhone® operates correctly before placing it back into the dock. Please refer to the owner's instruction manual of your iPhone®.

Remember that your iPhone® will only be charge when the AC adapter is connected to the base.

17

18

#### SPECIFICATIONS

|                            |                                   |
|----------------------------|-----------------------------------|
| Bluetooth specs            | V2.1 + EDR                        |
| Radio Frequency Range      | 2.4 – 2.4835GHz                   |
| Output power class         | Class 2                           |
| Maximum range (open space) | 10 meters                         |
| Supported profiles         | HSP, HFP                          |
| Type of Battery            | Lithium-ion Polymer               |
| Talk Time/ working Time    | Up to 6 hours                     |
| Standby time               | Up to 32 hours                    |
| Audio Output               | 0.25W RMS                         |
| Power Supply               | AC100V-240V 50/60Hz Adaptor/5v/1A |
| Operating Temperature      | 0 – 45°C                          |

If you are having any problem getting your MM03i to work, please go [www.nativeunion.com](http://www.nativeunion.com) to for further information or consult your retailer.

If neither of those solve the problem, please feel free to e-mail us at [support@nativeunion.com](mailto:support@nativeunion.com), and we will do our best to help you.

#### LIMITED WARRANTY

If the product appears to be damaged or does not function properly, please follow the advice in this booklet.

If you can not find any solution in this booklet, please go to [www.nativeunion.com/support](http://www.nativeunion.com/support) for instructions about how to obtain warranty service.



Regulations According to R&TTE  
Declaration of Conformity

Native Union declares that MM03i is in compliance with the essential requirements and other relevant provisions of Directive 1999/5/EC, in conformity with the following standards: EN300 328, EN301 489-1, EN301 489-17 and EN60950-1

The declaration of conformity is available at :  
Design Pool Ltd  
9 Mercer Street  
Sheung Wan  
Hong Kong

19

20



#### FCC COMPLIANCE STATEMENT

This device complies with Part 15 of FCC Rules. Operation is subject to the following two conditions : (1) this device may not cause harmful interference, and (2) this device must accept any interference received, including interference that may cause undesired operation.

Changes or modifications not expressly approved by the party responsible for compliance could void the user's authority to operate the equipment. The manufacturers are not responsible for any radio or TV interference caused by unauthorized modification or incorrect installation to this equipment.

FCC ID : X3Q-MM03

#### FCC NOTICE (USA)

As specified in Part 15 of the FCC Rules, this equipment complies within the limits of a Class B digital device. These restrictions provide sufficient protection against radio and TV interference in residential areas. However, even during normal operation, this device may cause TV or radio interference. In attempting to eliminate some or all interference, you should try one or more of the following corrective measures:

1. Increase the distance between the device and the radio and/or TV
2. Try a different outlet on various electrical circuits for the device, the radio and/or TV.
3. Reposition the receiving antenna



#### BLUETOOTH

The Bluetooth word mark and logos are owned by the Bluetooth SIG, Inc. And any use of such marks by Native Union is under licence. Bluetooth QDID:



Disposal of old electrical and electronic equipment :  
After the implementation of the European Directive 2002/96/EU in the national legal system, the following applies:

Electrical and electronic devices may not be disposed of with domestic waste. Consumers are obliged by law to return electrical and electronic devices at the end of their service lives to the public collecting points set up for this purpose or point of sale. Details to this are defined by the national law of the respective country. This symbol on the product, the instruction manual or the package indicates that a product is subject to these regulations. By recycling, reusing the materials or other forms of utilizing old devices, you are making an important contribution to protecting our environment.

21

Designed in France by David Turpin  
[www.nativeunion.com](http://www.nativeunion.com)

Spec. is subject to change without prior notice.

© Native Union and Native Union Logo are registered trademarks of Design Pool Ltd  
All other trademarks and registered trademarks are the property of their respected owners.

iPhone® is a Trademark of Apple Inc.

Other product and company names mentioned herein may be trademarks of their respective companies.

"Works with iPhone®" means that an electronic accessory has been designed to connect specifically to iPhone® and has been certified by the developer to meet Apple performance standards.  
Apple is not responsible for the operation of this device or its compliance with safety and regulatory standards.



[www.nativeunion.com](http://www.nativeunion.com)

Assembled in China