



English

Français

Deutsch

Español

Italiano

Português

中文

日本語

한국어

العربية

Русский

Türk

NATIVE UNION

TALK-GATE

Instruction Manual

Manuel d'utilisation

Bedienungsanleitung

Manual de instrucciones

Manuale di istruzioni

Manual de instruções

使用说明书

取扱説明書

사용 설명서

دليل التعليمات

Руководство по эксплуатации

Öğretim Kılavuzu



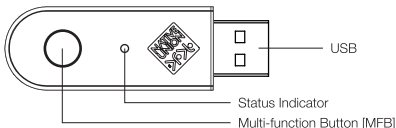
WELCOME

Thank you for buying the TALK-GATE USB Bluetooth Dongle, you will love this easy set-up Bluetooth experience.

GETTING STARTED

Make sure you have installed Skype or other VOIP softwares and registered an account before starting the installation. TALK-GATE is compatible with all Skype versions. To use the TALK-GATE, please read the following steps.

LOCATION OF USB BLUETOOTH DONGLE



HOW TO USE

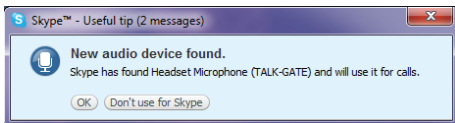
step 1

Installation for Windows XP / Vista / 7

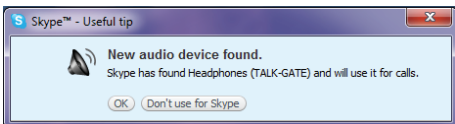
Note: Please make sure to save your work as connecting the adapter for the first time will trigger your PC to install the appropriate drivers.

- Plug the Bluetooth Dongle into the USB port of your computer.
- TALK-GATE will start installation automatically.

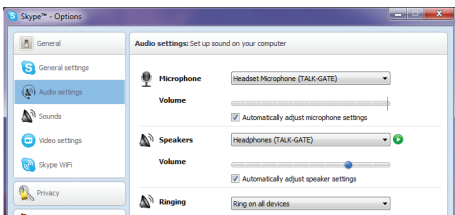




- Press "OK" to continue



- Press "OK" again to finish installation
- Go to Skype "Audio Setting",
If installed properly, "TALK-GATE" can be chosen on the device list for both Microphone and Speakers.

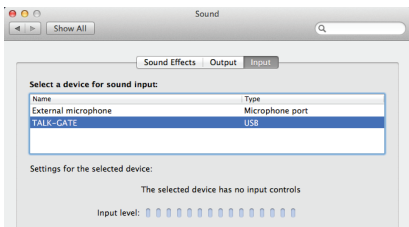
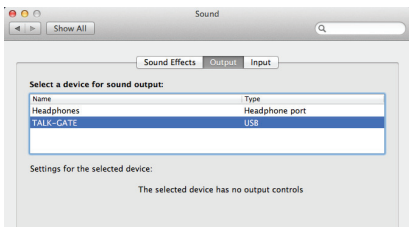


Installation for OS X

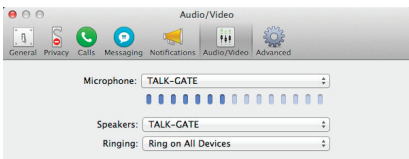
- Plug the Bluetooth Dongle into the USB port of your computer.
- TALK-GATE will start installation automatically.



- Go to 'System Preferences > Sound > Output'.
If installed properly, "TALK-GATE" can be chosen on the device list for both Sound Output and Input.



- Go to Skype "Audio Setting",
If installed properly, "TALK-GATE" can be chosen on the device list for both Microphone and Speakers.



step 2

Pairing your Bluetooth headset / handset with TALK-GATE

(Please place your Bluetooth device close to the TALK-GATE)



Pairing the 1st Bluetooth device

- a) In standby mode, press and hold the [MFB] for 3 seconds until the status indicator flashes blue and red alternately.



- b) If connection successful, the status indicator will flash once in blue every 2 seconds.

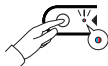


Pairing the 2nd Bluetooth device

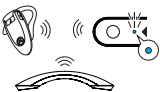
- a) In standby mode, press and hold the [MFB] for 3 seconds until the status indicator flashes blue and red alternately.



- b) After connected, press the [MFB] once again to include the connection link with 1st Bluetooth device



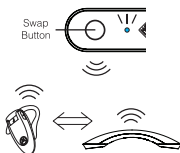
- c) If double connection successful, the status indicator will double flash in blue every 2 seconds.



step 3

Connection between the 2 simultaneously connected devices

- When making a new call, the last active Bluetooth device will have priority of the line.
- When receiving incoming call, the priority of the line will be given to the Bluetooth device you use to answer the call with.
- During an active call, press the [MFB] once to swap conversation between the 2 connected Bluetooth devices.



Status of TALK-GATE:

Status	Status Indicator	Action
Standby (Not connected)	– Red LED will flash every 1 second.	Short Press the [MFB] – Re-connect Bluetooth device from the paired list. Long Press the [MFB] – Enter pairing mode.
Connected	For single device connection, Blue LED will single flash every 2 seconds. For double devices connection, Blue LED will double flash every 2 seconds.	Short Press the [MFB] (when connected to only 1 device) – Connect to another Bluetooth device from the paired list. Long Press the [MFB] – Disconnect current connected Bluetooth device and enter Pairing mode.
Connecting	Red and Blue LED will flash alternately.	–
Incoming call from Skype / VoIP	Both Red and Blue LED will flash.	–
During active Skype / VoIP Call	Both Red and Blue LED will flash.	Short Press the [MFB] (when connected to 2 devices) – Swap the call conversation between the 2 connected devices.



TROUBLESHOOTING

If you are having problems using your Native Union TALK-GATE, please go to www.nativeunion.com for further help, or consult your local retailer.

LIMITED WARRANTY

If the product appears to be damaged or does not function properly, please follow the advice in this booklet.

If you can not find any solution in this booklet, please go to www.nativeunion.com/support for instructions about how to obtain warranty service.

FCC COMPLIANCE

This device complies with Part 15 of the FCC Rules. Operation is subject to the following 2 condition:

- 1.this device may not cause harmful interference, and
- 2.this device must accept any interference received, including interference that may cause undesired operation. Changes or modifications not expressly approved by the party responsible for compliance could void the user's authority to operate the equipment.

IMPORTANT SAFETY WARNINGS

1. FCC regulations state that any change or modification to the equipment, not expressly approved by the manufacturer or its authorized parties could void user's authority to operate this equipment.
2. To prevent fire or electric shock, do not expose the unit to rain or moisture.
3. Never attempt to open the casing. Always refer servicing to a qualified technician.

FCC NOTICE (USA)

As specified in Part 15 of the FCC Rules, this equipment complies within the limits of a Class B digital device. These restrictions provide sufficient protection against radio and TV interference in residential areas. However, even during normal operation, this device may cause TV or radio interference. In attempting to eliminate some or all interference, you should try one or more of the following corrective measure:

1. Increase the distance between the device and the radio and/or TV
2. Try a different outlet on various electrical circuits for the device, the radio /or TV
3. Reposition the receiving antenna



Disposal of old electrical and electronic equipment:
After the implementation of the European Directive 2002/96/EU in the national legal system, the following applies:
Electrical and electronic devices may not be disposed of with domestic waste. Consumers are obliged by law to return electrical and electronic devices at the end of their services lives to the public collecting points set up for this purpose or point of sale. Details to this are defined by the national law of the respective country. This symbol on the product, the instruction manual or the package indicates that a product is subject to these regulations. By recycling, reusing the materials or other forms of utilizing old devices, you are making an important contributions to protecting our environment.



The *Bluetooth*[®] word mark and logos are owned by the Bluetooth SIG, Inc. And any use of such marks by Design Pool Limited is under licence.
Bluetooth QDID : B019769

www.nativeunion.com

Spec. is subject to change without prior notice.
Assembled in China

© Native Union and Native Union Logo are registered trademarks of Design Pool Ltd
All other trademarks and registered trademarks are the property of their respected owners.
Other products and company names mentioned herein may be trademarks of their respective companies.

Web www.nativeunion.com

Email contact@nativeunion.com

Web www.nativeunion.com
Email contact@nativeunion.com

