

## FCC STATEMENT

1. This device complies with Part 15 of the FCC Rules. Operation is subject to the following two conditions:

(1) This device may not cause harmful interference.

(2) This device must accept any interference received, including interference that may cause undesired operation.

2. Changes or modifications not expressly approved by the party responsible for compliance could void the user's authority to operate the equipment.

NOTE: This equipment has been tested and found to comply with the limits for a Class B digital device, pursuant to Part 15 of the FCC Rules. These limits are designed to provide reasonable protection against harmful interference in a residential installation.

This equipment generates uses and can radiate radio frequency energy and, if not installed and used in accordance with the instructions, may cause harmful interference to radio communications. However, there is no guarantee that interference will not occur in a particular installation. If this equipment does cause harmful interference to radio or television reception, which can be determined by turning the equipment off and on, the user is encouraged to try to correct the interference by one or more of the following measures:

- Reorient or relocate the receiving antenna.

- Increase the separation between the equipment and receiver.

- Connect the equipment into an outlet on a circuit different from that to which the receiver is connected.

- Consult the dealer or an experienced radio/TV technician for help.

# Keypad & Proximity Flash Mount Reader Installation Manual

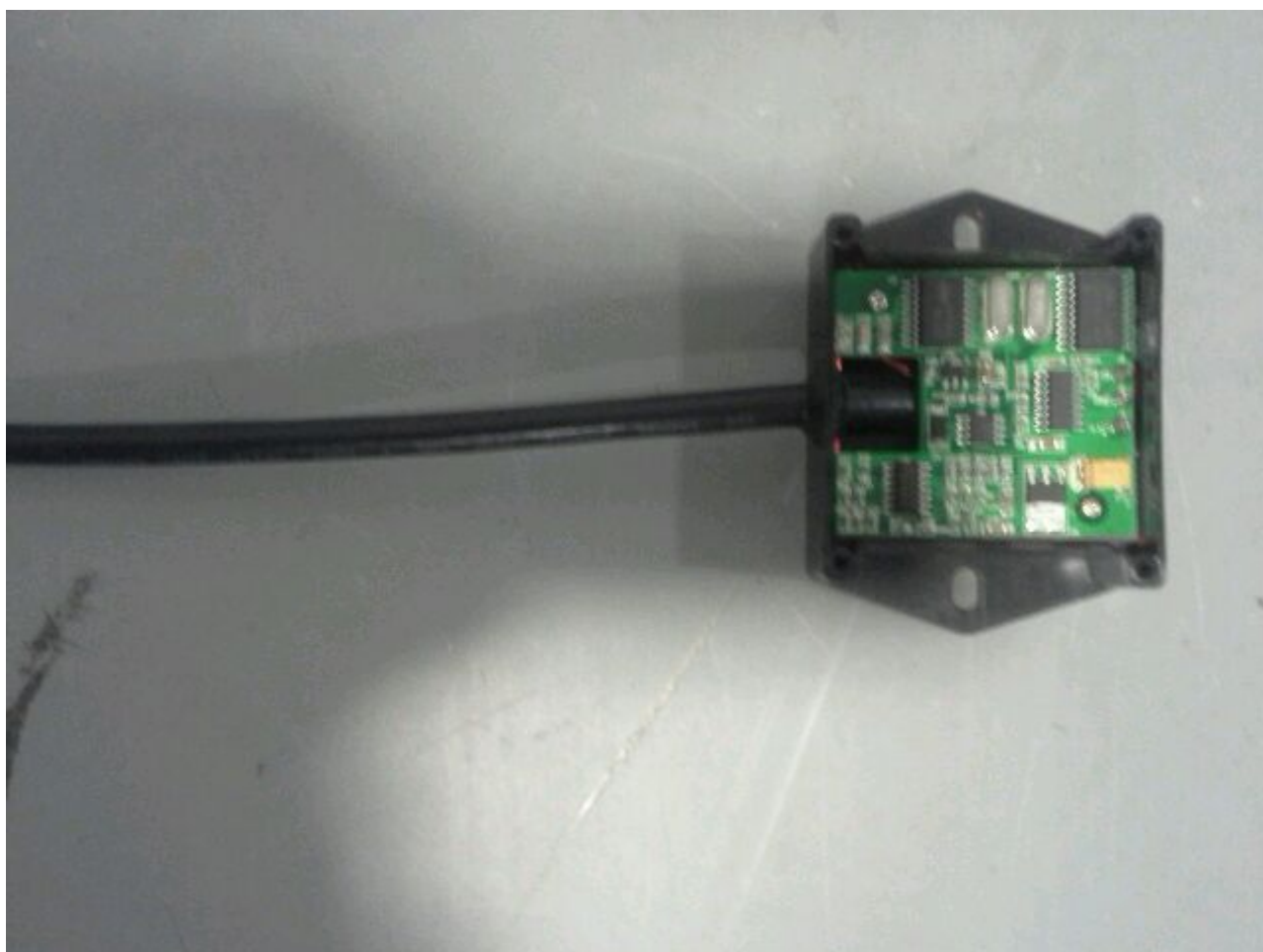
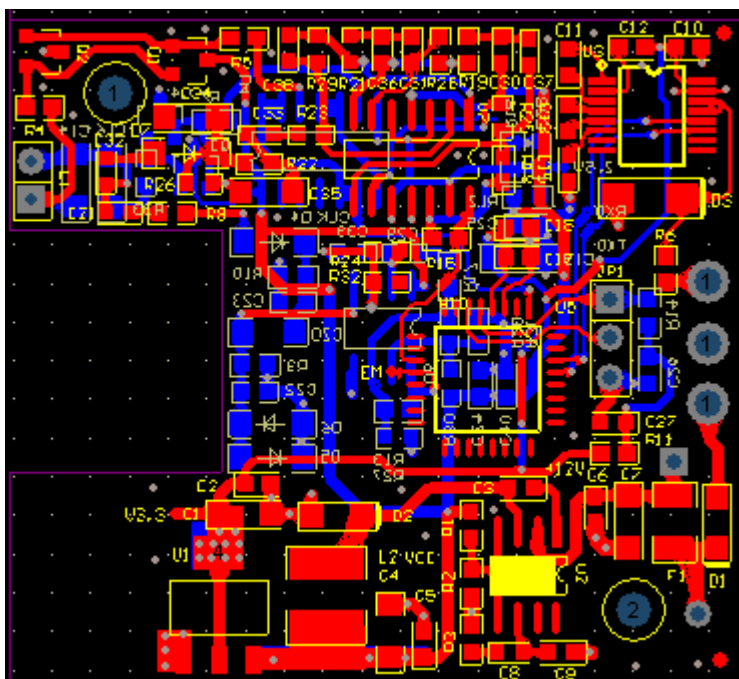
## Specifications

### 1. performance

Items	standard	Typical values	instructions
voltage range (V)	9~15V DC	12V	
Starting current (ma)	<150ma		Input voltage +12VDC
ordinary current (ma)	80		
Charge current (ma)	80		
frequency (HZ)	125KHZ		
Output way	RS232		
environment temperature (°C)	-30-65		
humidity (%)	10-90		

### 2. PCB (mm) (48\*44mm)

# Keypad & Proximity Flash Mount Reader Installation Manual



# Keypad & Proximity Flash Mount Reader Installation Manual

---

## 3. wiring diagram:

<b>Color</b>	<b>Description</b>
Red	Power+
Black	Power-
White	Transmission Signal

## 4. Functional description

Read 125 KHZ card data, through by 232 output.

CE2200