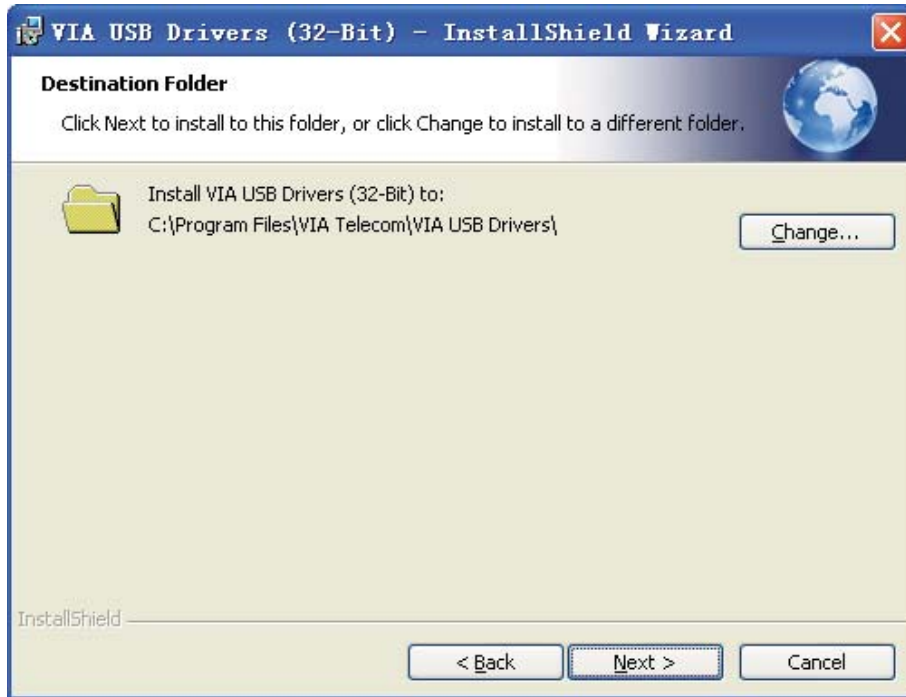


# **Orca Mini PCI Express Card**

## *User Manual*

## ● USB Driver Installation

1. To install the VIA USB Windows device driver, you must first start the Setup application, **VIA USB Drivers 2.1.5 (32-Bit).exe**, by double-clicking the associated icon.
2. Choose the directory for the application to be installed.



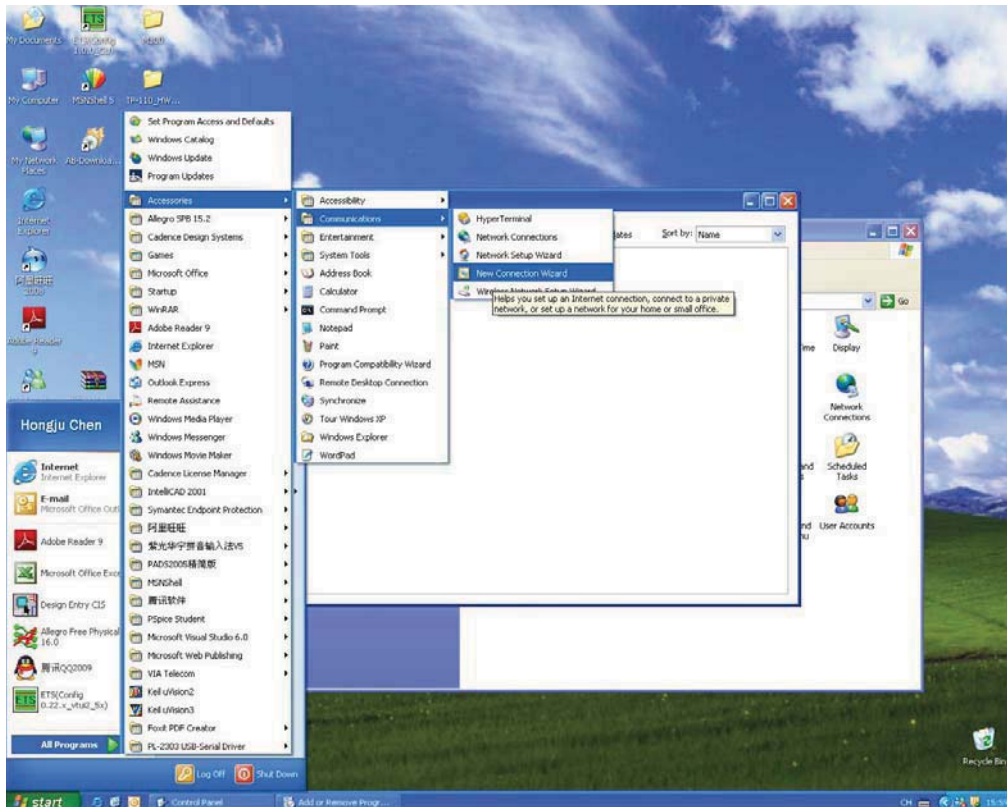
3. Click **Install**, then this setup program will copy all the files into the directories on the local system drive of your PC. The following dialog box will appear upon execution.





## ● Dial up Application Setup

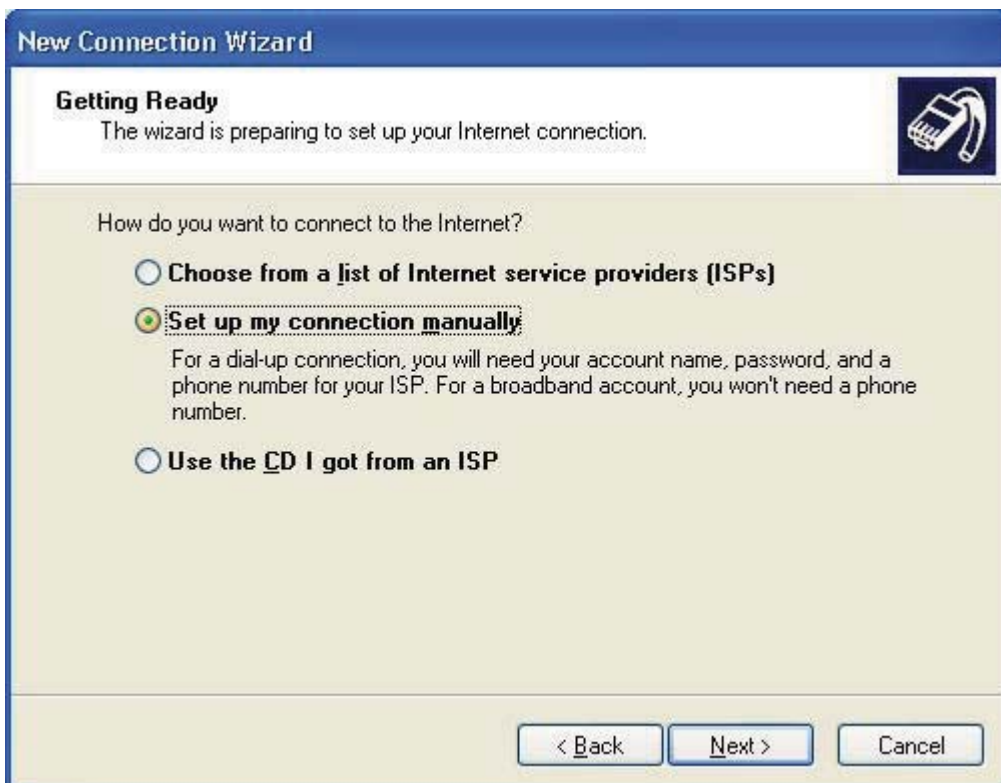
### 1. Select “New Connection Wizard”



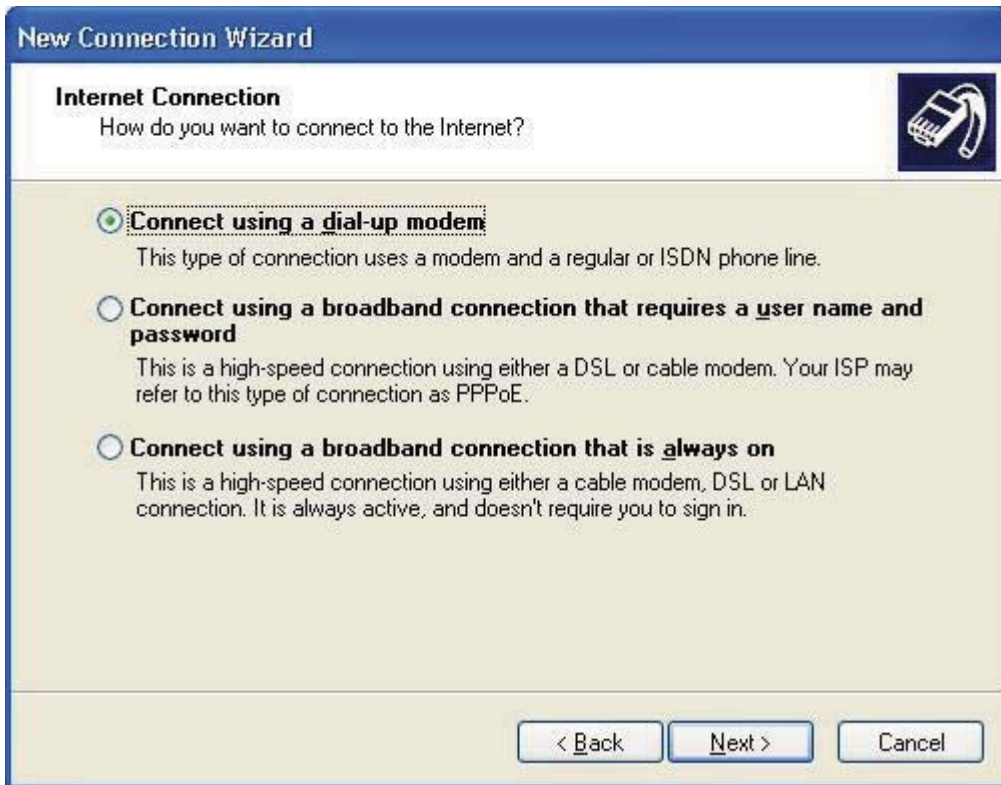
2. Select Connect to the Internet



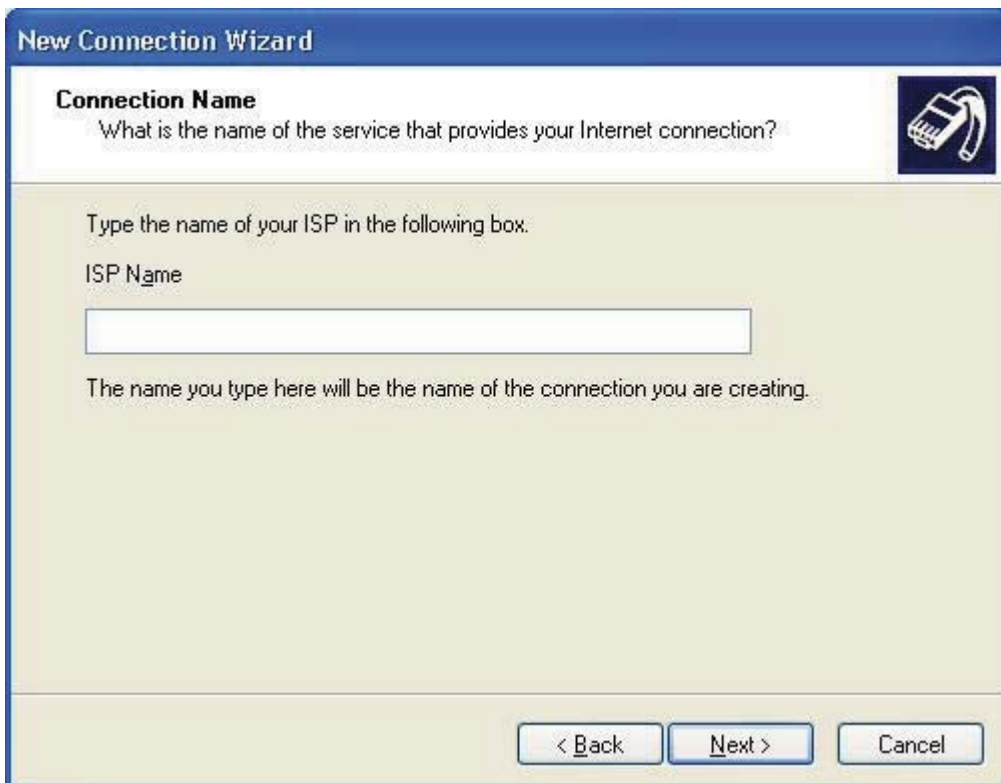
3. Select "Set up my connection manually"



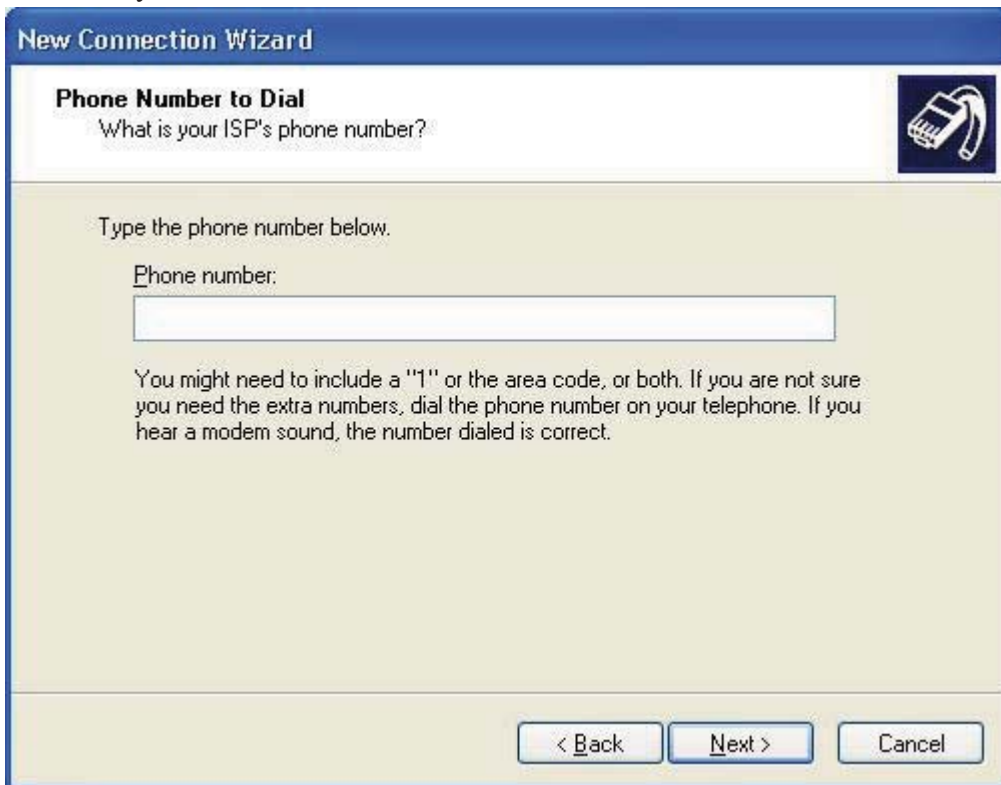
4. Select "Connect using a dial-up modem"



5. Enter your ISP name



6. Enter your Number to Dial



**New Connection Wizard**

**Phone Number to Dial**  
What is your ISP's phone number?


Type the phone number below.

Phone number:

You might need to include a "1" or the area code, or both. If you are not sure you need the extra numbers, dial the phone number on your telephone. If you hear a modem sound, the number dialed is correct.

< Back   Next >   Cancel

7. Select Anyone's use



**New Connection Wizard**

**Connection Availability**  
You can make the new connection available to any user or only to yourself.

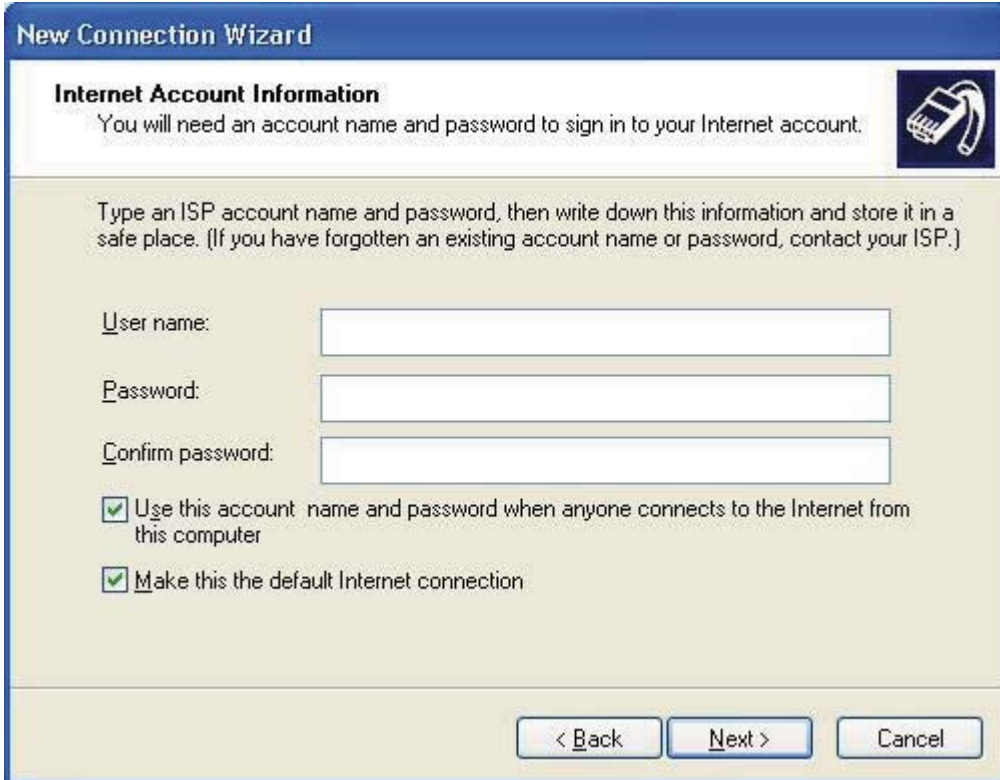
A connection that is created for your use only is saved in your user account and is not available unless you are logged on.

Create this connection for:

Anyone's use  
 My use only

< Back   Next >   Cancel

8. Enter user name and password



**New Connection Wizard**

**Internet Account Information**  
You will need an account name and password to sign in to your Internet account.

Type an ISP account name and password, then write down this information and store it in a safe place. (If you have forgotten an existing account name or password, contact your ISP.)

User name:

Password:

Confirm password:

Use this account name and password when anyone connects to the Internet from this computer

Make this the default Internet connection

< Back   Next >   Cancel

9. After finishing the configuration, you can set up a connection



**Connect Dial-up Connection**



User name:

Password:

Save this user name and password for the following users:

Me only

Anyone who uses this computer

Dial:

Dial   Cancel   Properties   Help



If Driver is properly installed, you can see “VIA Telecom USB Modem” in the *properties* menu.



## ● RF Exposure

Your device contains a transmitter and a receiver. When it is ON, it receives and transmits RF energy. When you communicate with your device, the system handling your connection controls the power level at which your device transmits.

Important safety information regarding radio frequency radiation (RF) exposure. To ensure compliance with RF exposure guidelines the device must be used with a separation from the body. Failure to observe these instructions could result in your RF exposure exceeding the relevant guideline limits.

The maxim permissible exposure is defined in 47 CFR 1.1310 with 0.5498 mW/cm\*cm(CDMA800MHz) and 1 mW/cm\*cm (CDMA 1900MHz). The transmitter is using external antenna that operate at 20cm or more from nearby persons. The maxim power density is 0.3523mW/cm\*cm (CDMA 800MHz) and 0.5058 mW/cm\*cm (CDMA1900MHz) at 20cm.