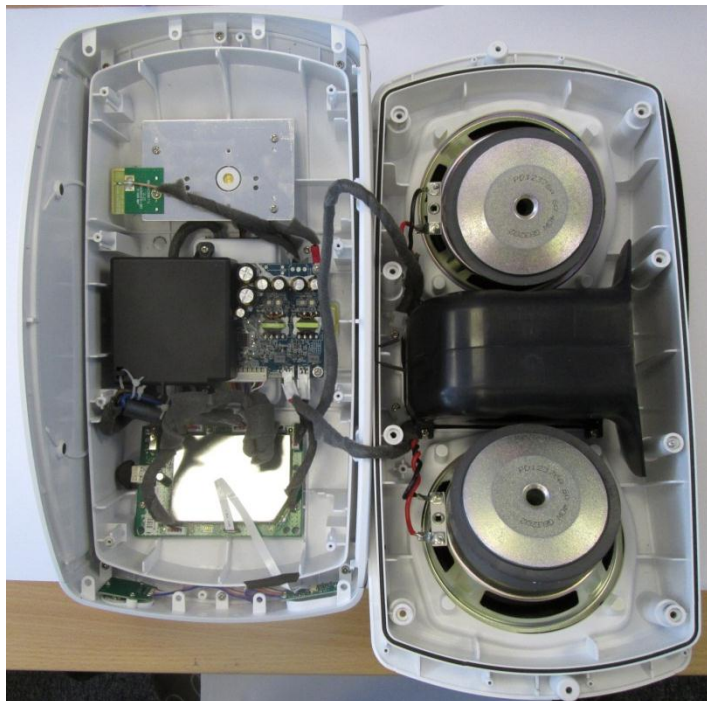


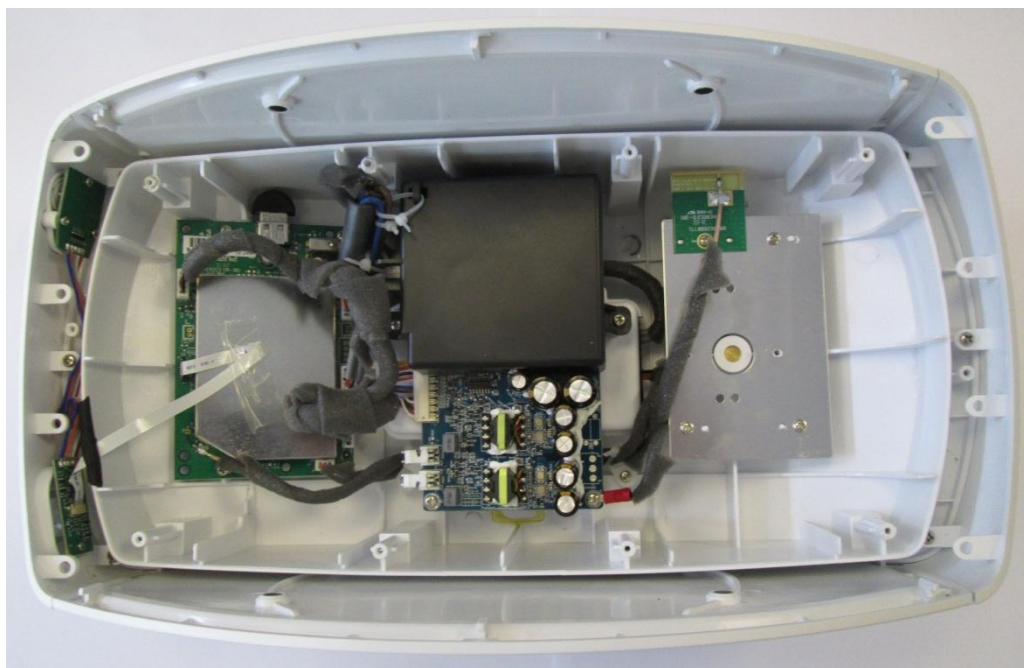
Pure Jongo T6, T640 – internal photos

V1 22-July-13

Internal View (Casing opened)



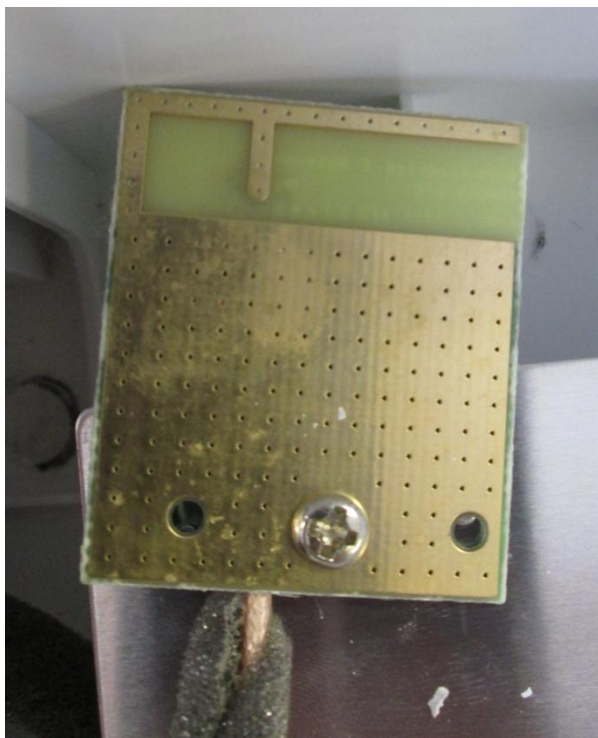
Rear Case



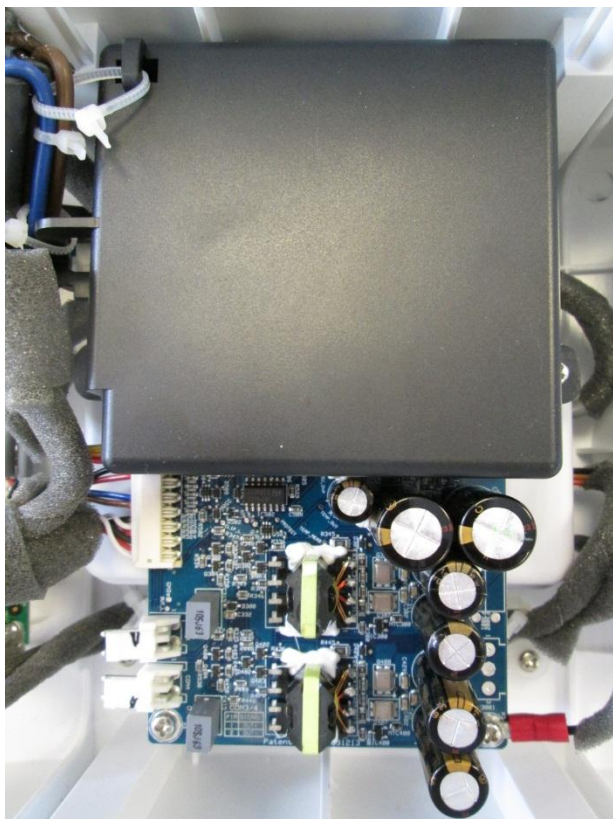
WiFi Antenna PCB Front



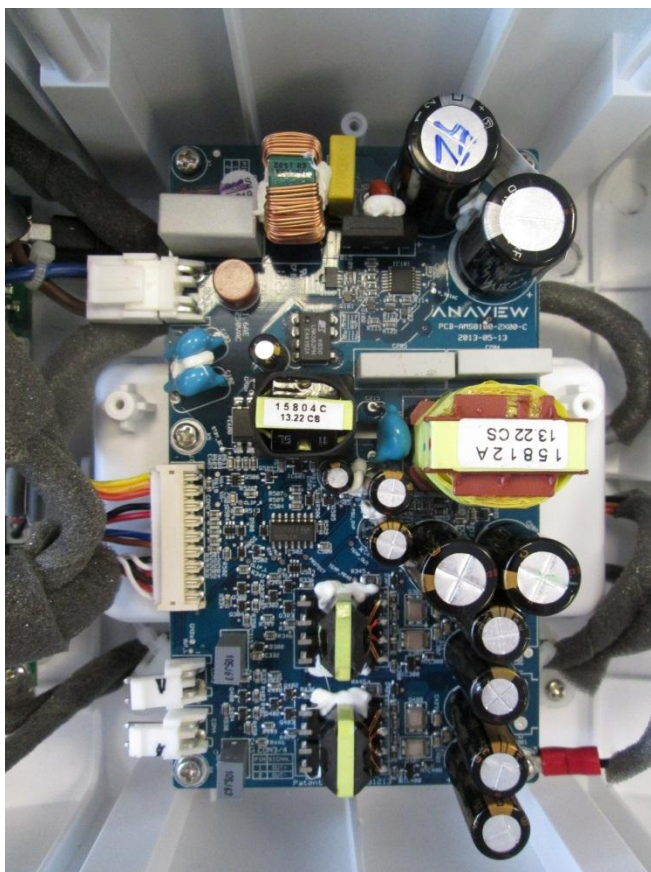
WiFi Antenna PCB Rear



PSU / AMP PCB Front with cover fitted



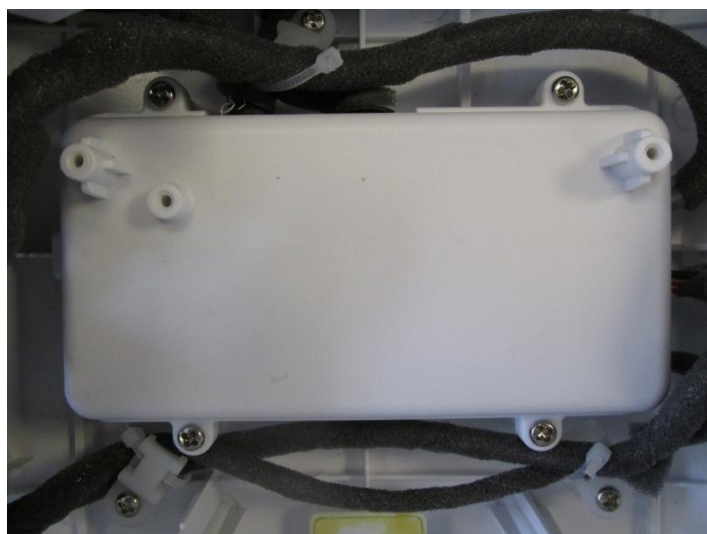
PSU / AMP PCB Front without cover fitted



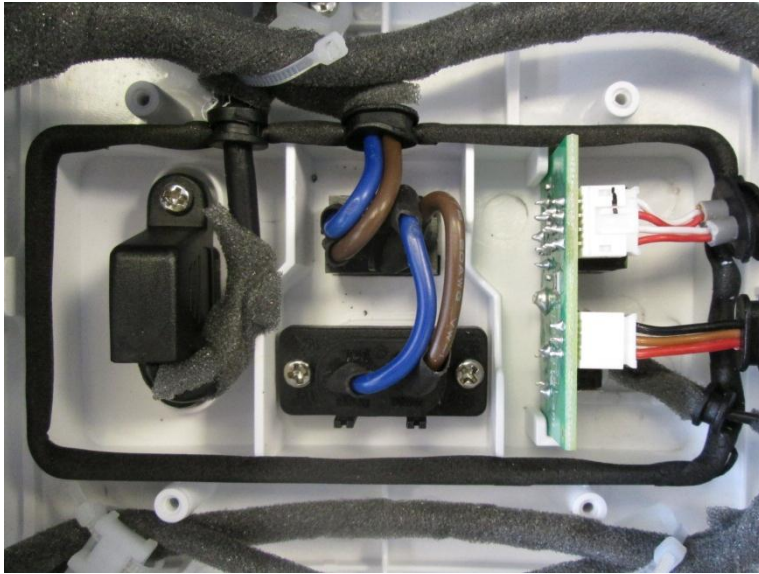
PSU / AMP PCB Rear



Rear Connectors cover



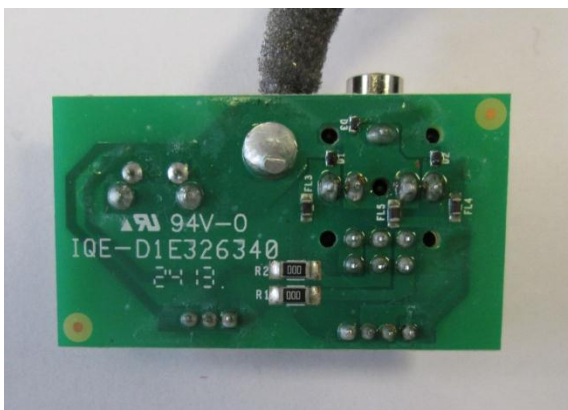
Rear Connectors with cover removed



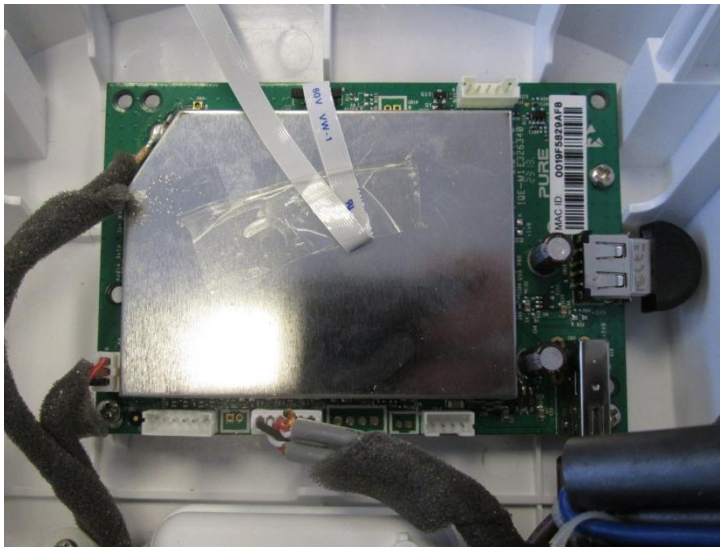
Aux In / WiFi button PCB Top



Aux In / WiFi button PCB bottom



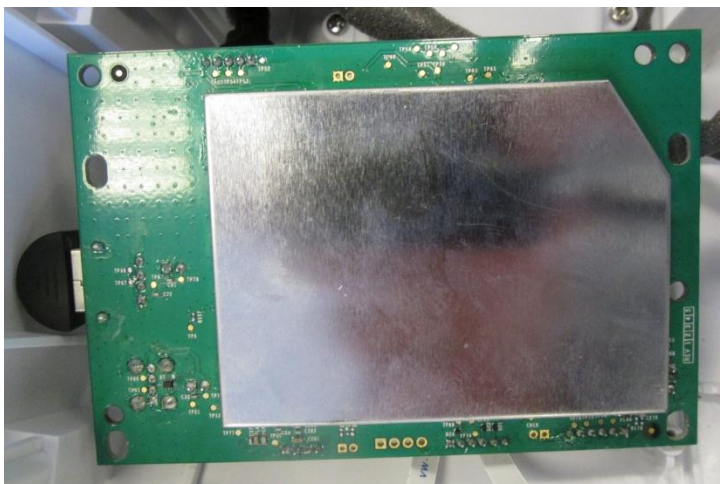
Main PCB Front with screening can



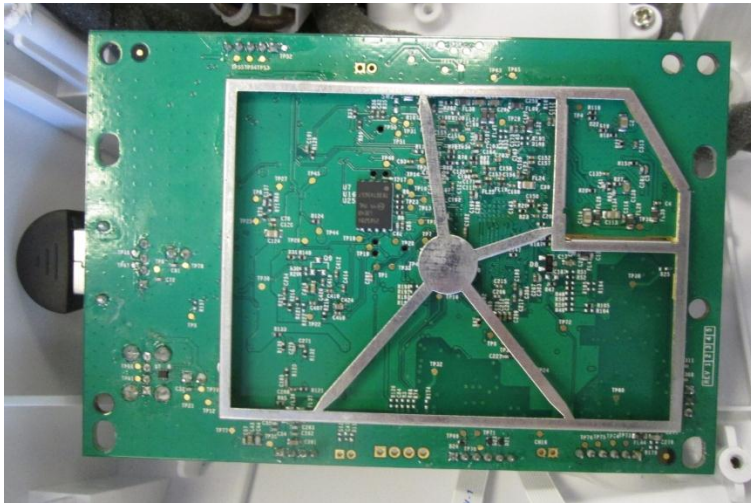
Main PCB Front without screening can



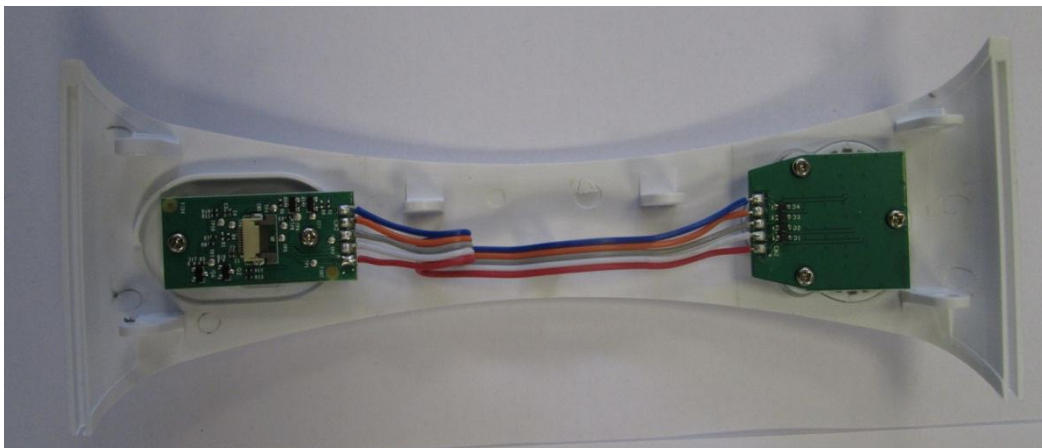
Main PCB Rear with screening can



Main PCB Rear without screening can



Buttons PCBs Rear



Buttons PCBs Front

