

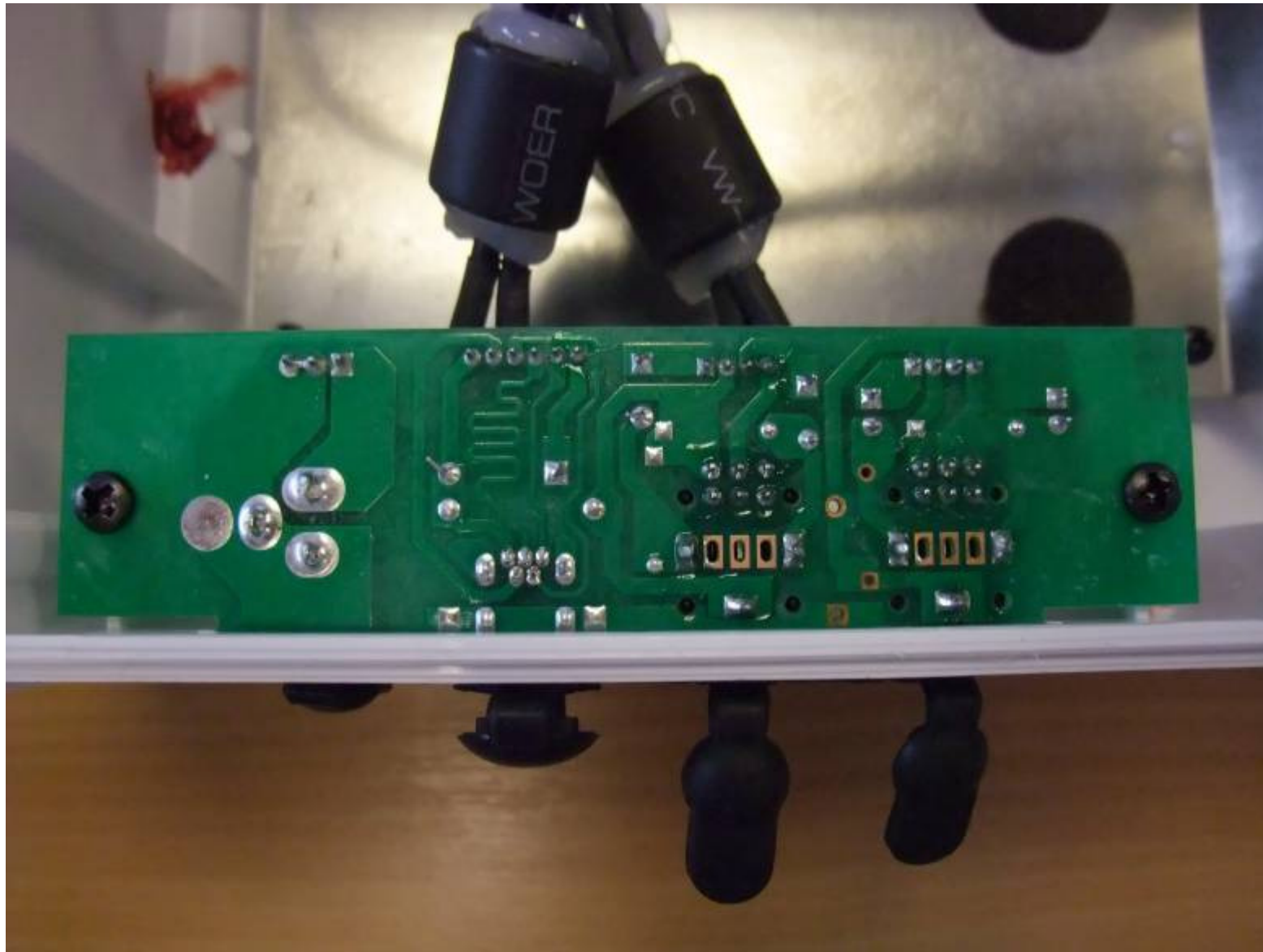
PURE OASIS Flow – internal photos

V1 15-June-2010

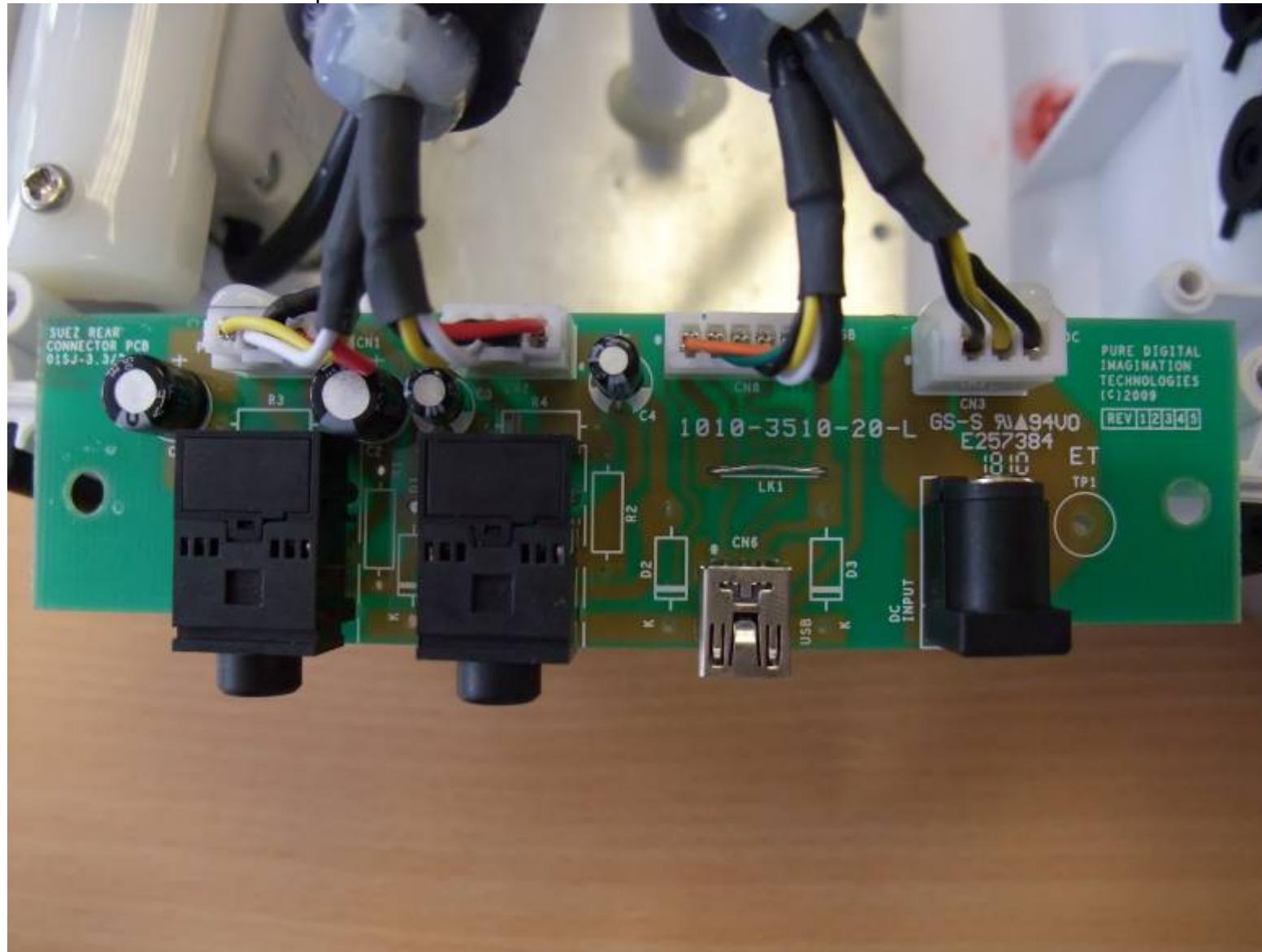
Internal View – Front and rear cabinets opened.



Rear Connector PCB – back



Rear Connector PCB – top

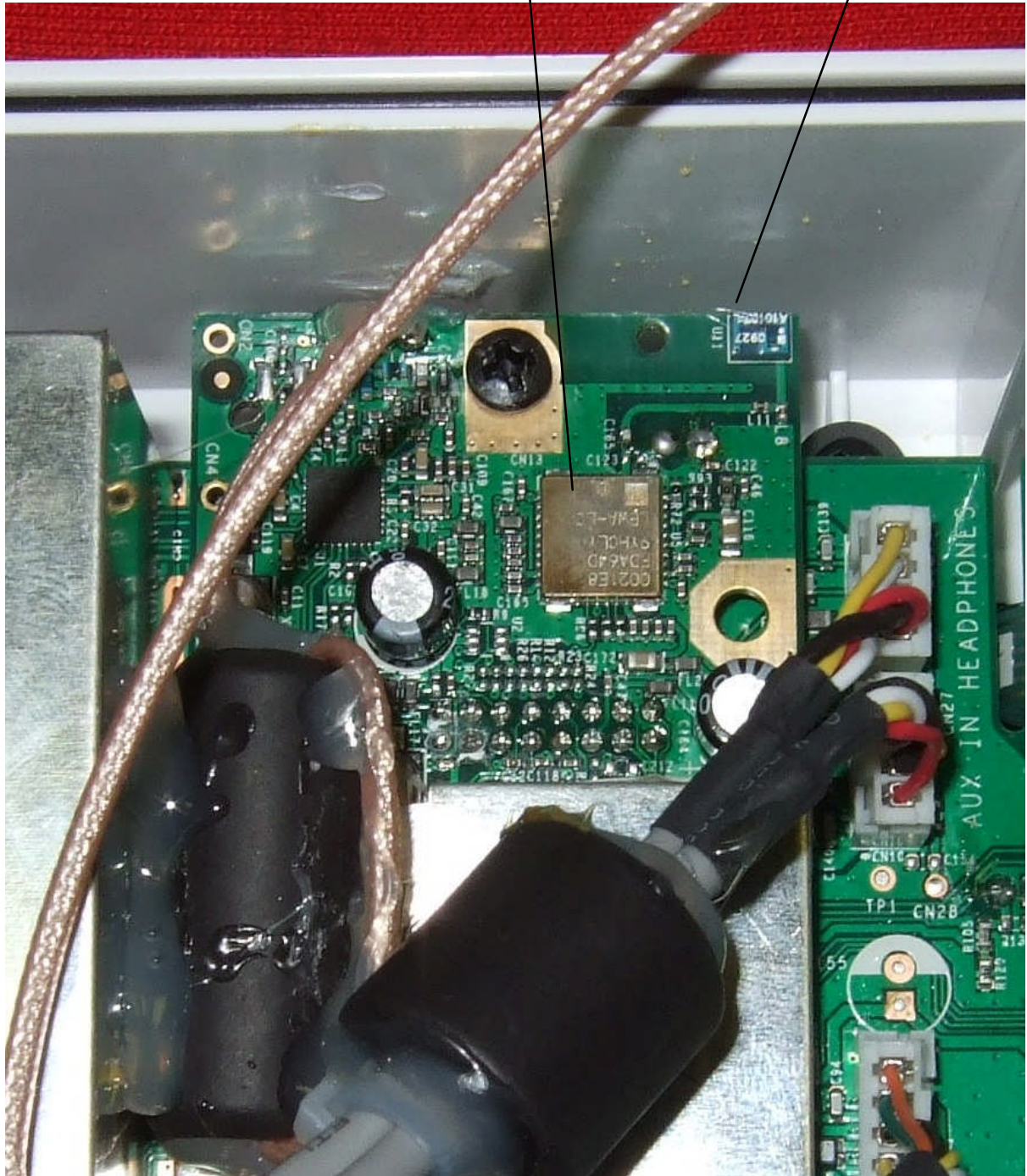


'Rufus' Main Module – top side with screening can fitted



WiFi
Chipset

Chip
Antenna



'Rufus' Main Module – top side with screening can removed



'Rufus' Main Module – back side



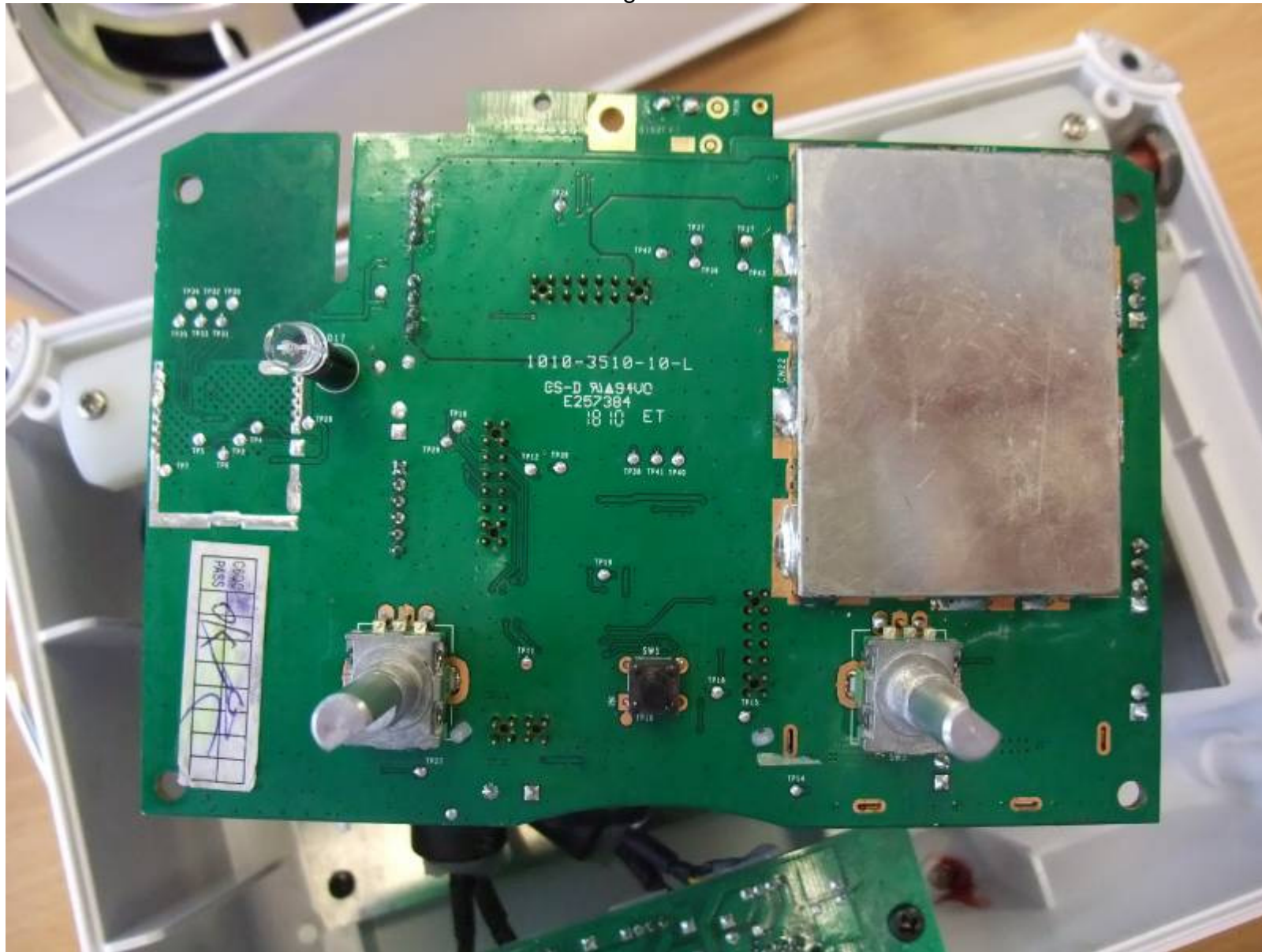
Main Power and Audio PCB – rear side with screening can fitted



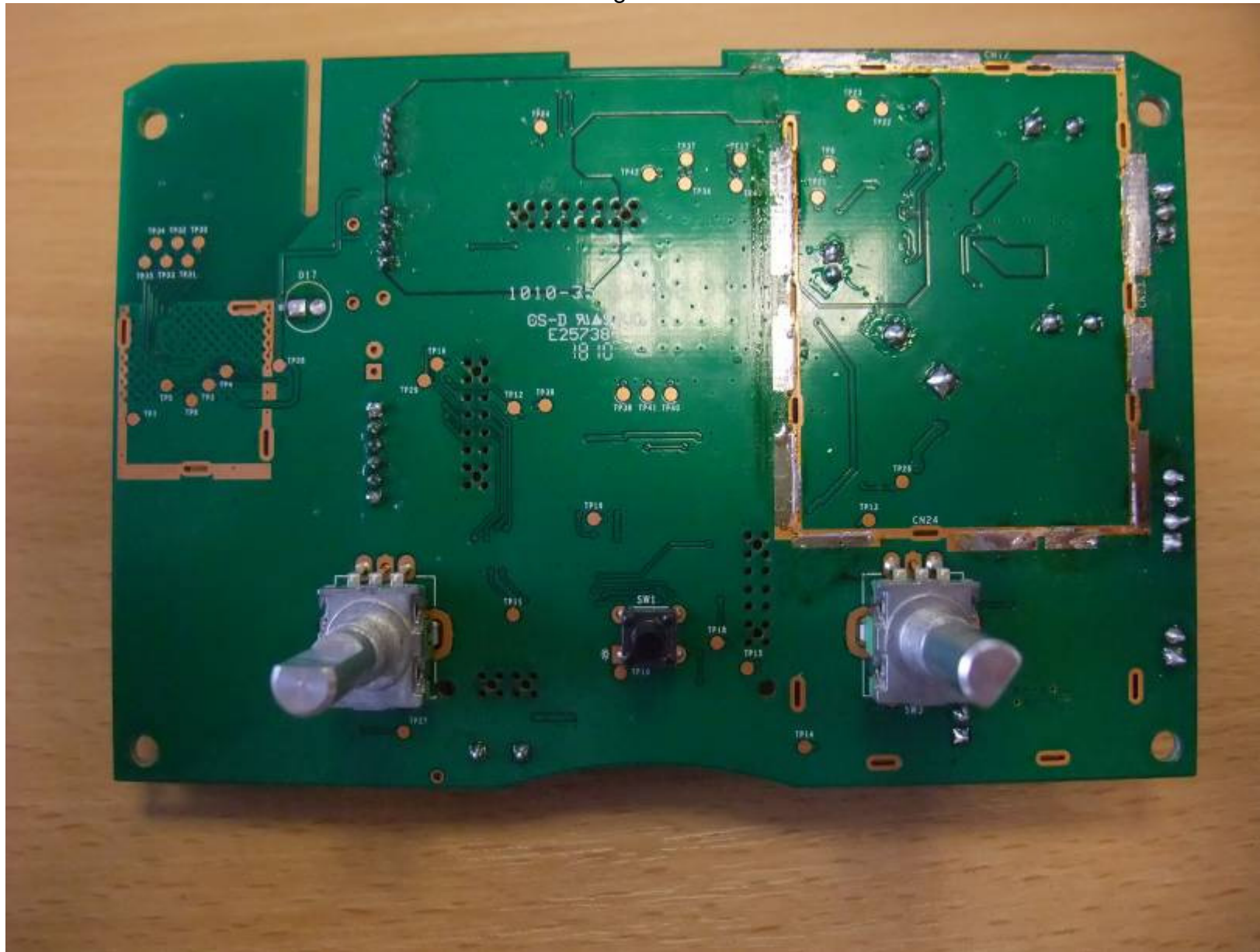
Main Power and Audio PCB – rear side with screening can removed



Main Power and Audio PCB – front side with screening can fitted



Main Power and Audio PCB – front side with screening can removed



Touchscreen on PET

