

PURE EVOKE Flow – internal photos

V1 28-May-2010

Internal view – rear panel opened.



Main PCB – top side with screening can fitted



Main PCB – top side with screening can removed



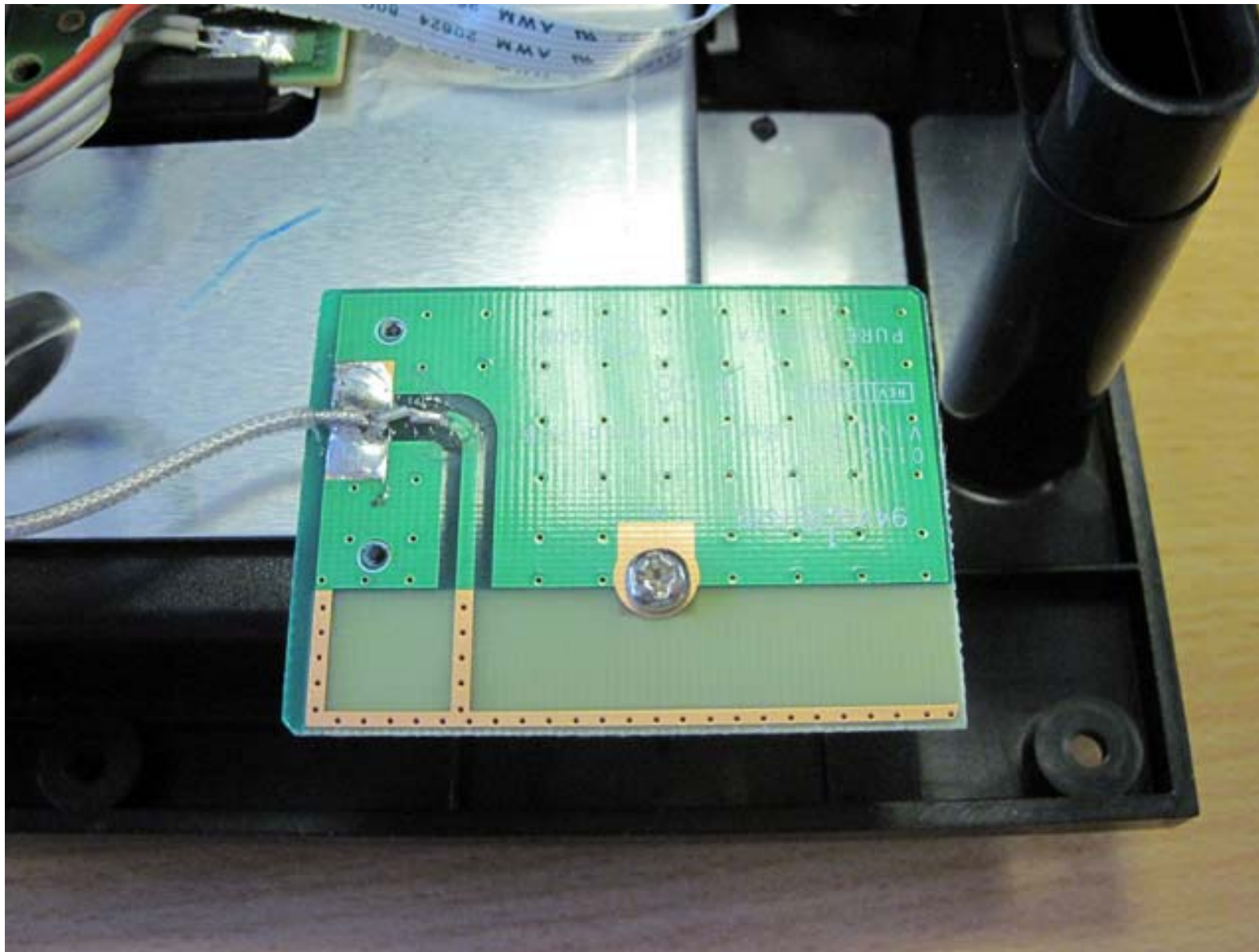
Main PCB – rear side with screening can fitted



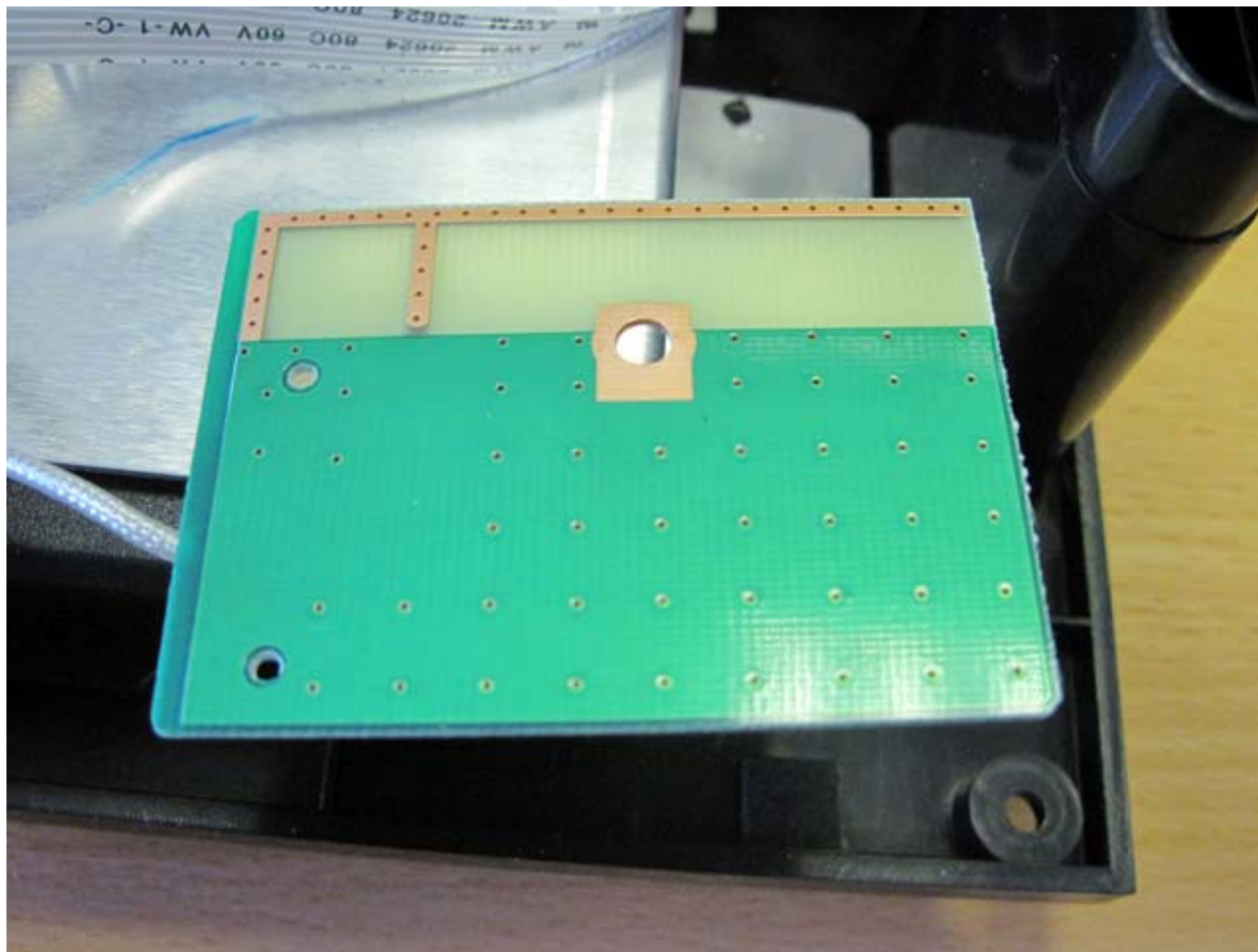
Main PCB – rear side with screening can removed



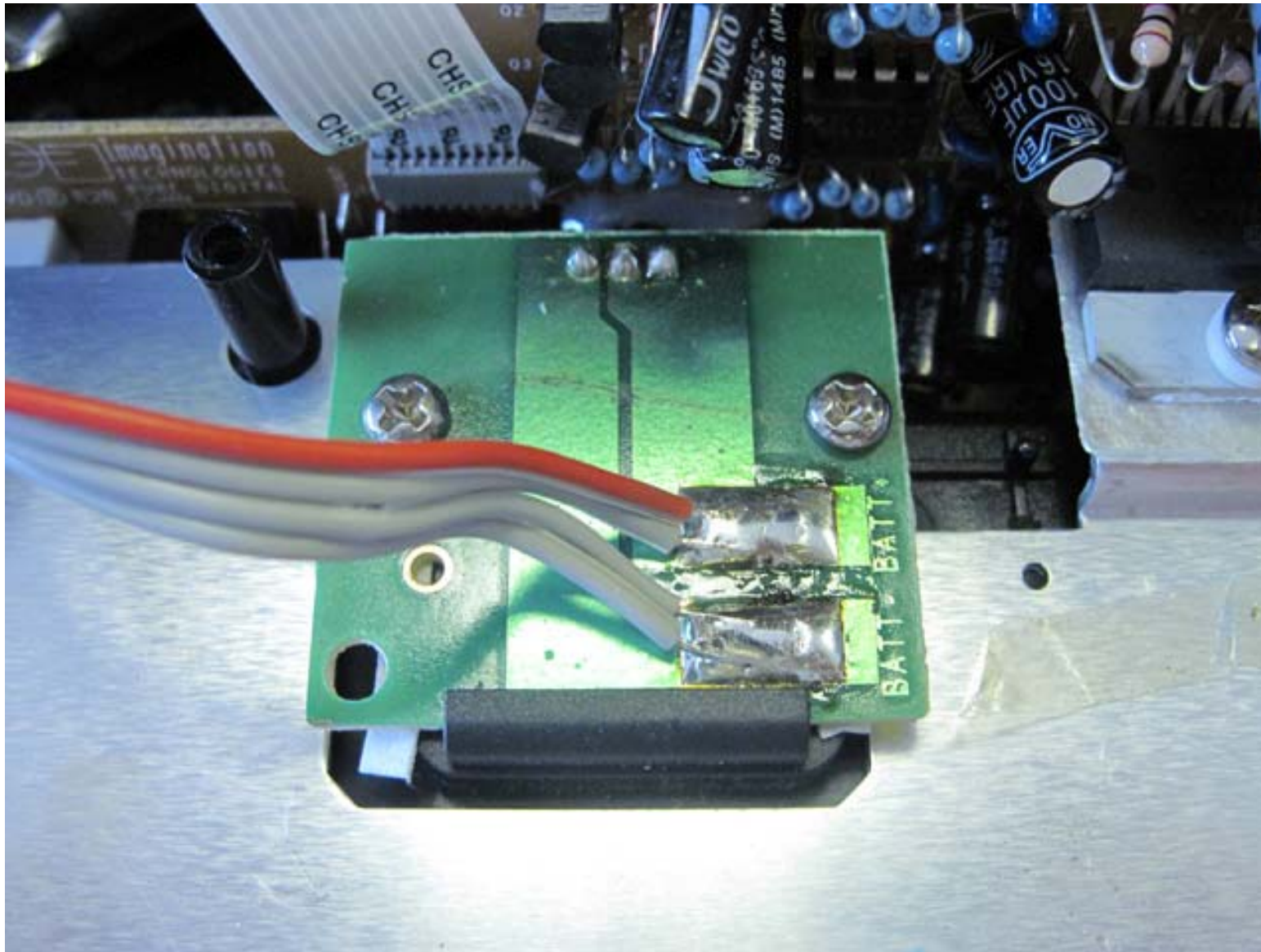
L-Band Antenna PCB – front side



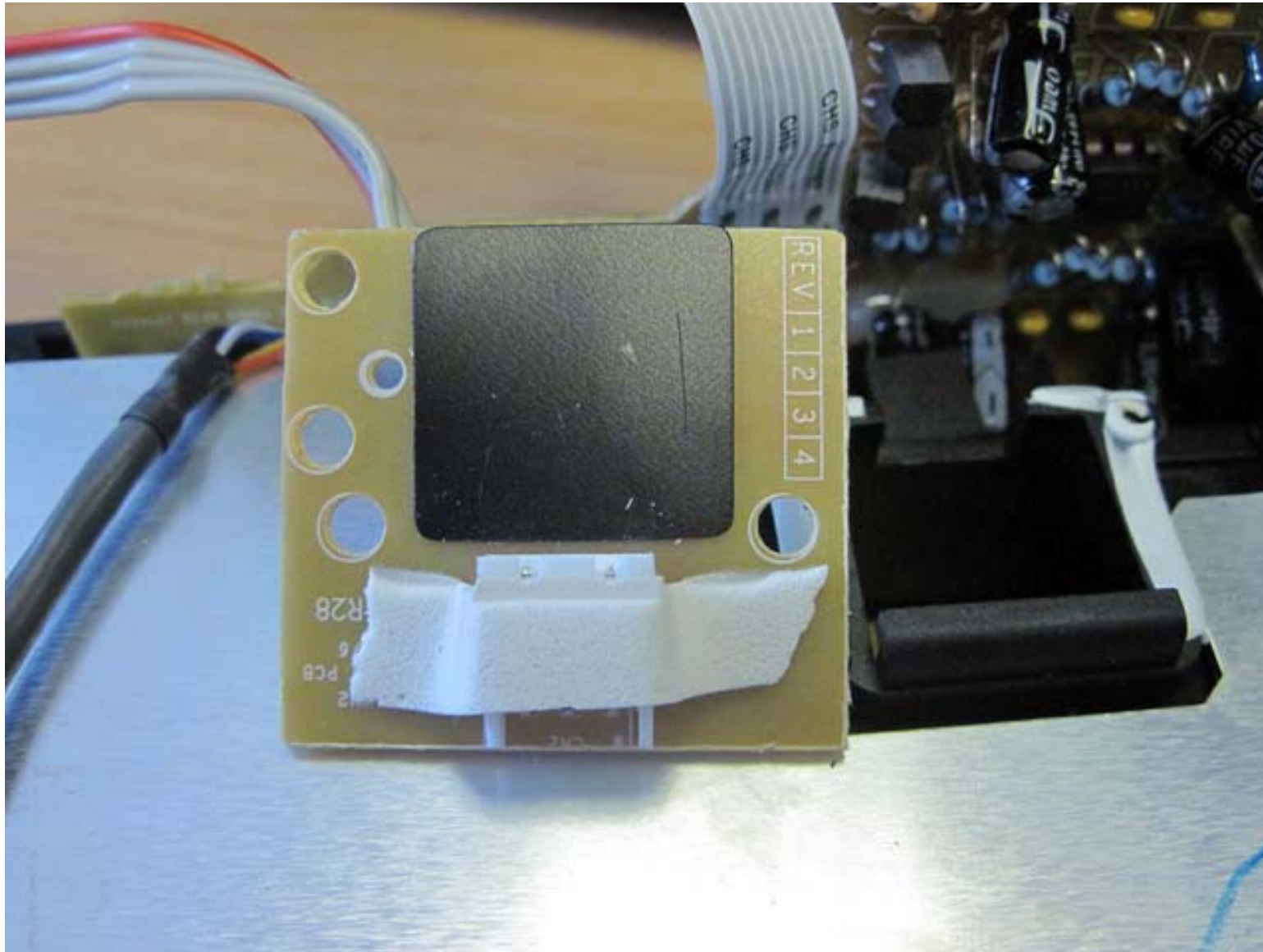
L-Band Antenna PCB – rear side



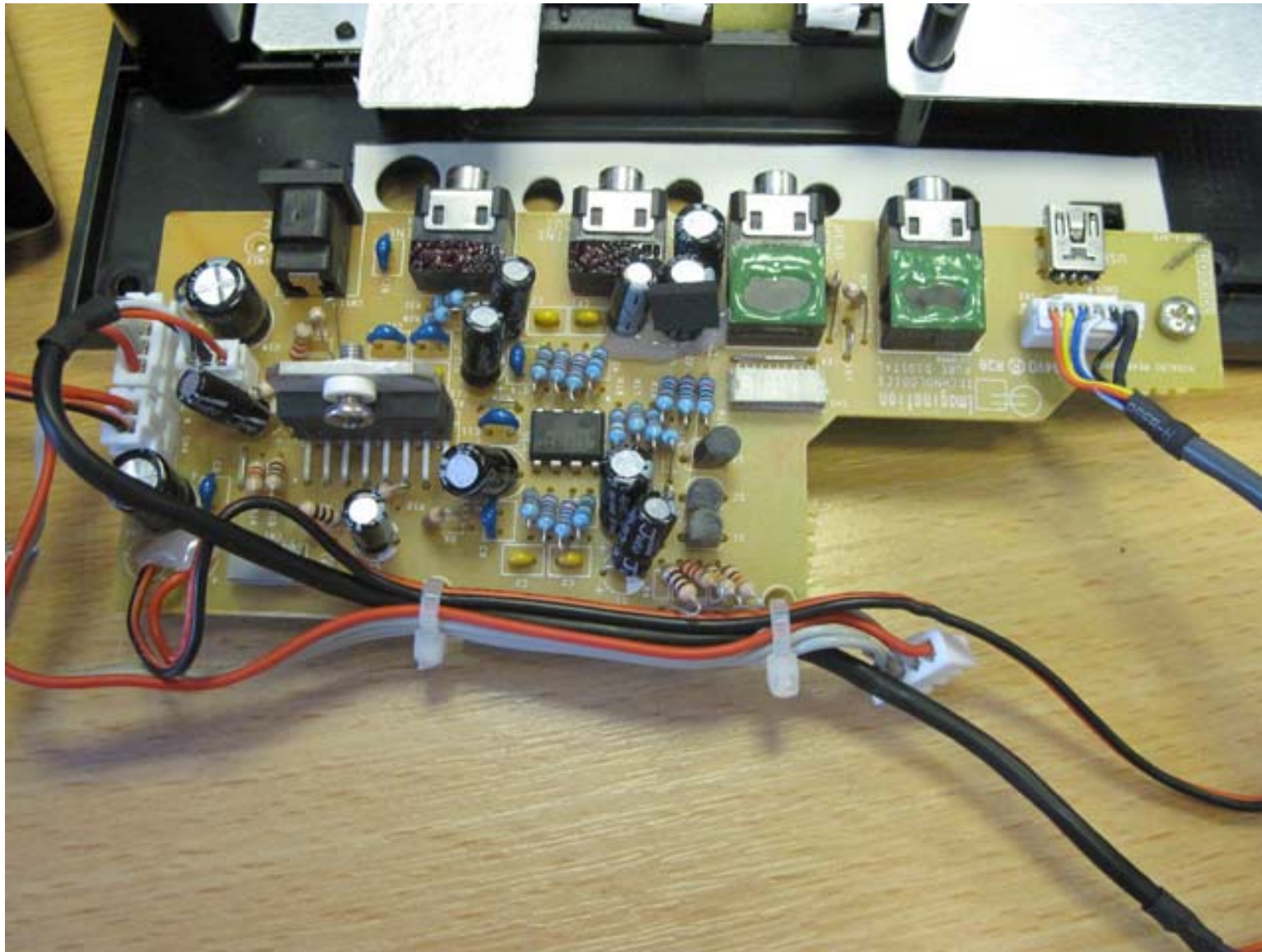
Battery Connector PCB – front side



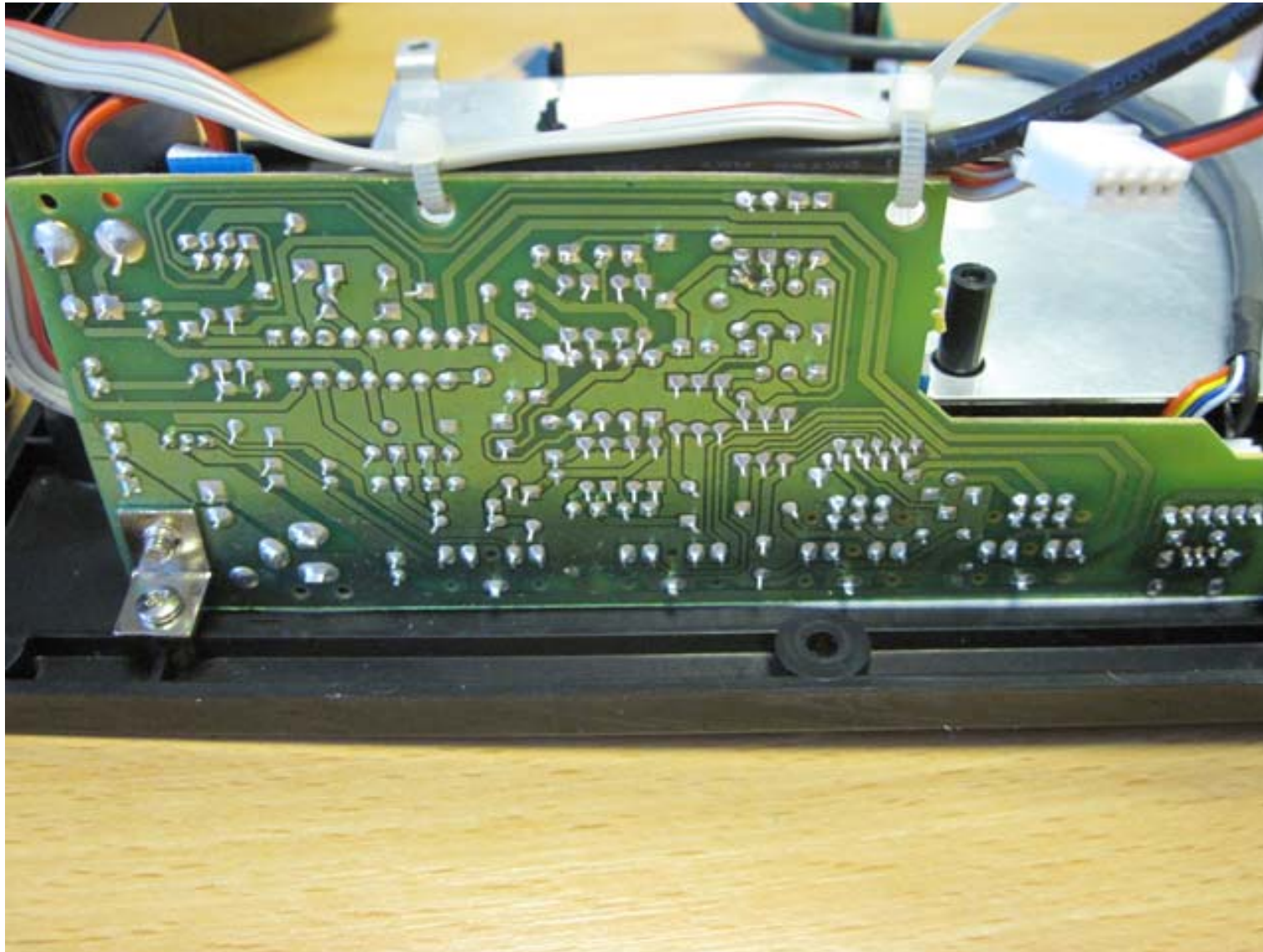
Battery Connector PCB – rear side



Connector PCB – top side



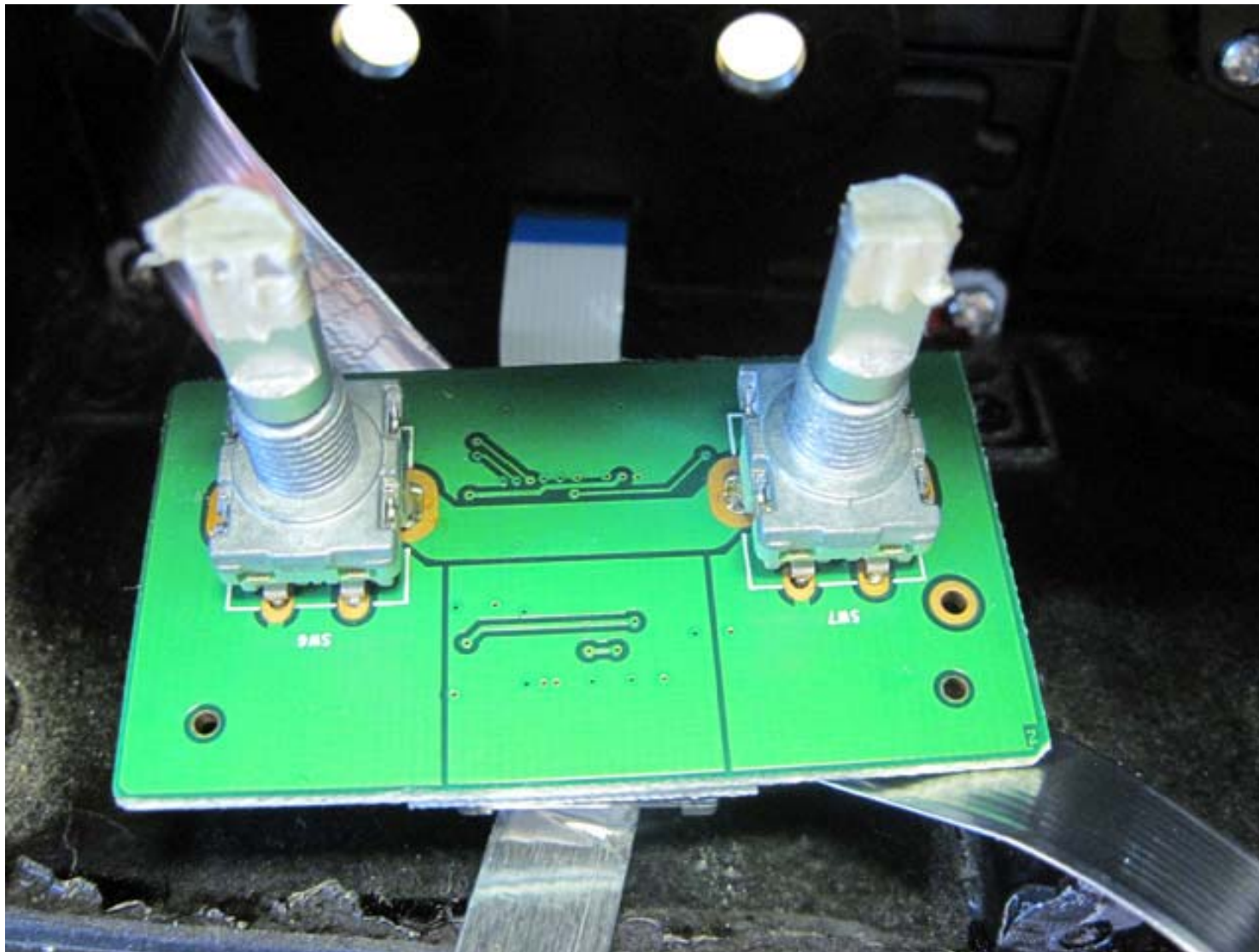
Connector PCB – bottom side



Shaft Encoder PCB – front side



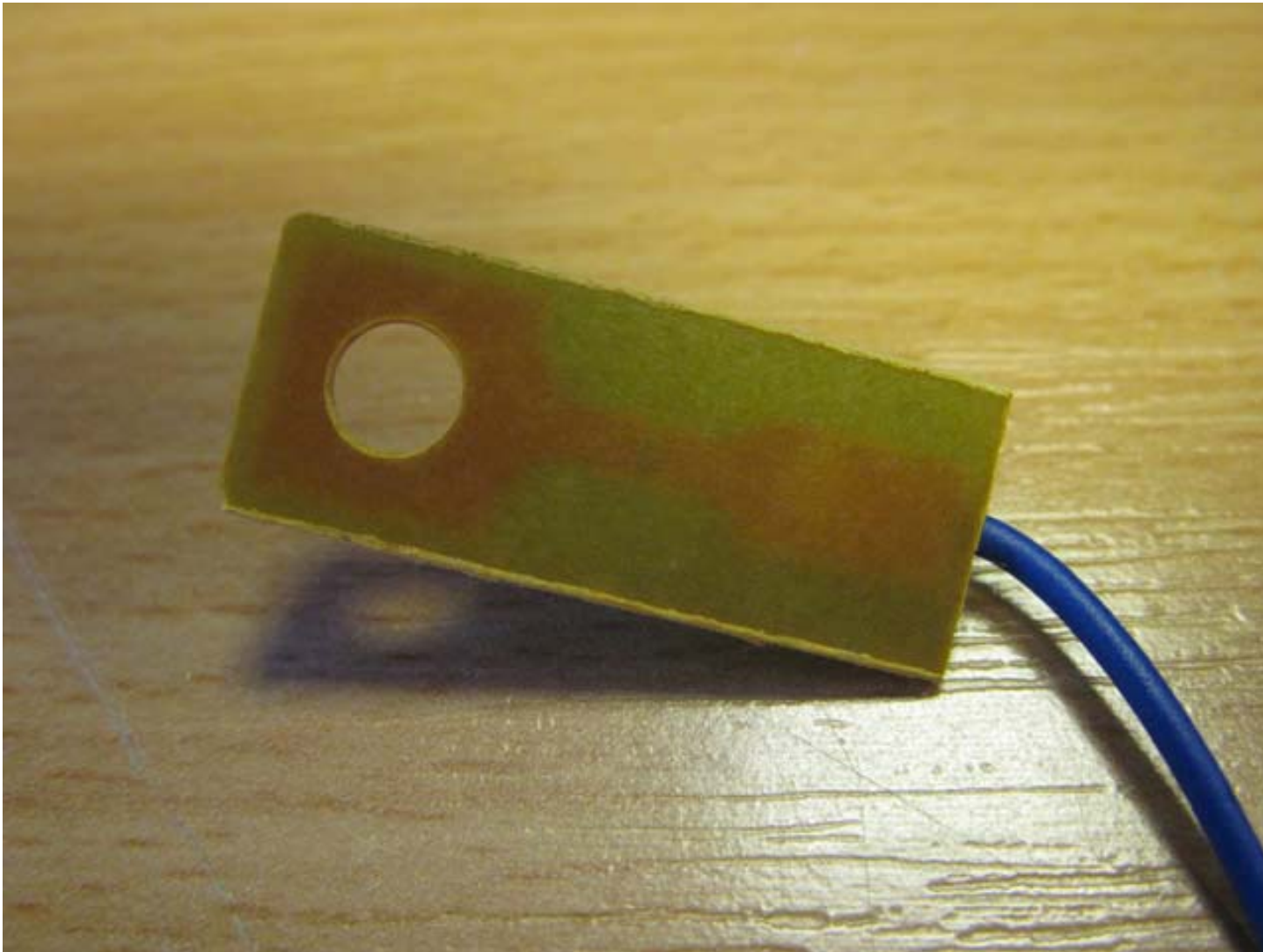
Shaft Encoder PCB – rear side



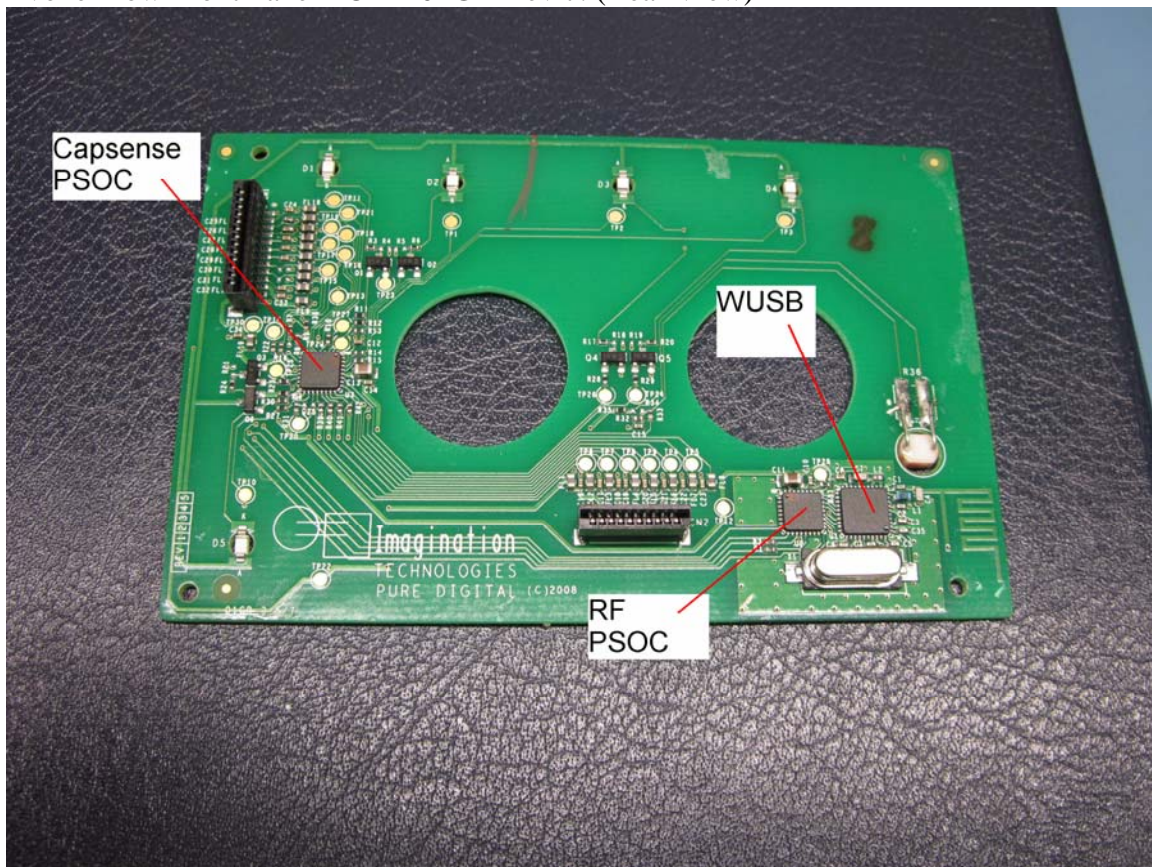
Snoozehandle PCB – front side



Snoozehandle PCB – rear side



Evolve Flow Front Panel PCB – 01GR Rev 7. (Rear View)



Evolve Flow Front Panel PCB – 01GR Rev 7. (Front View)

