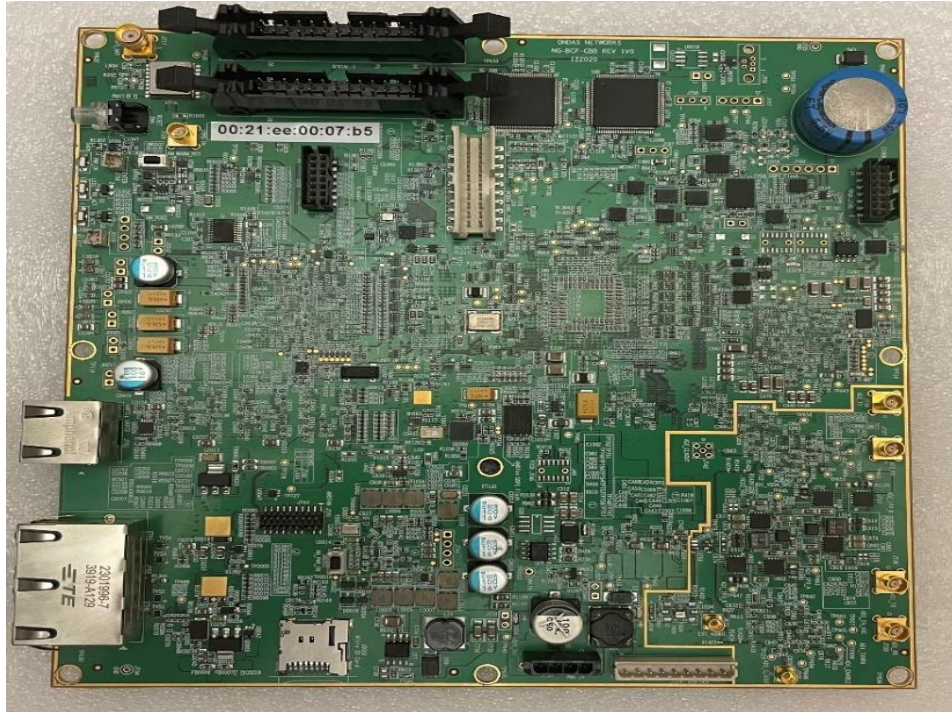
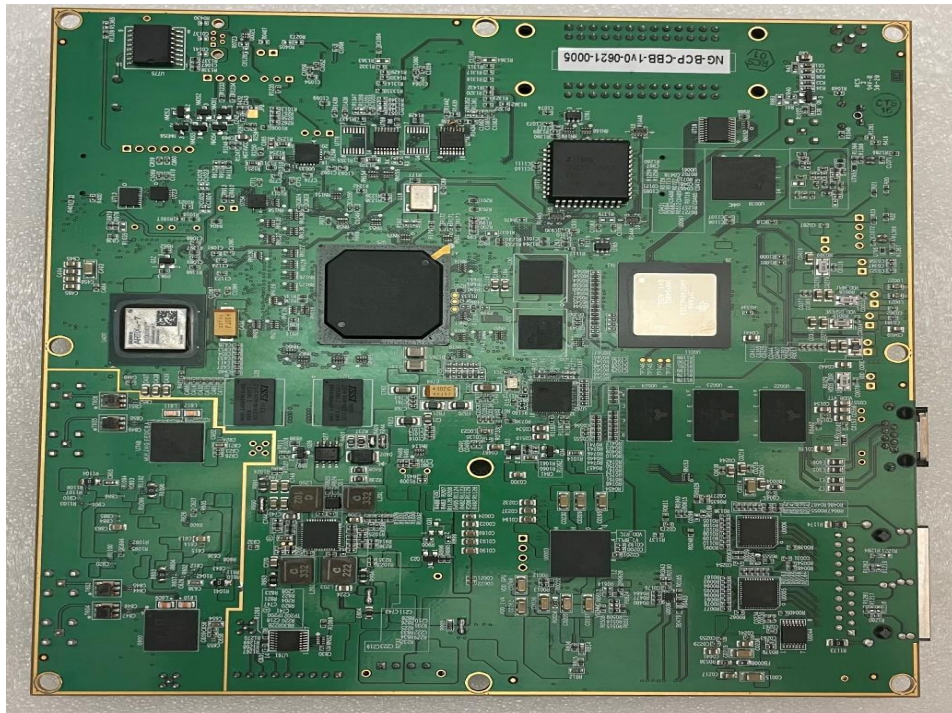


## EUT Internal Photographs

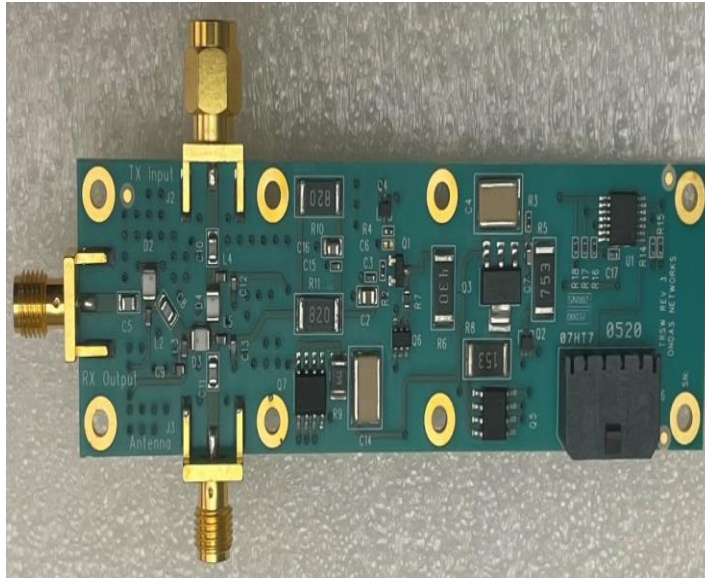
### 1.1 NG-BCP Communications Base Board (CBB)- Top View



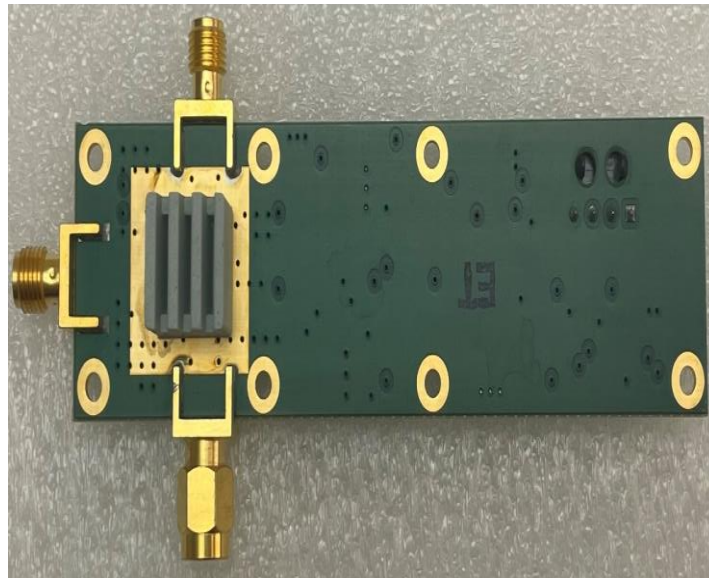
### 1.2 NG-BCP Communications Base Board (CBB) - Bottom View



### 1.3 NG-BCP Transmit Receive Switch (TRSW) - Top View

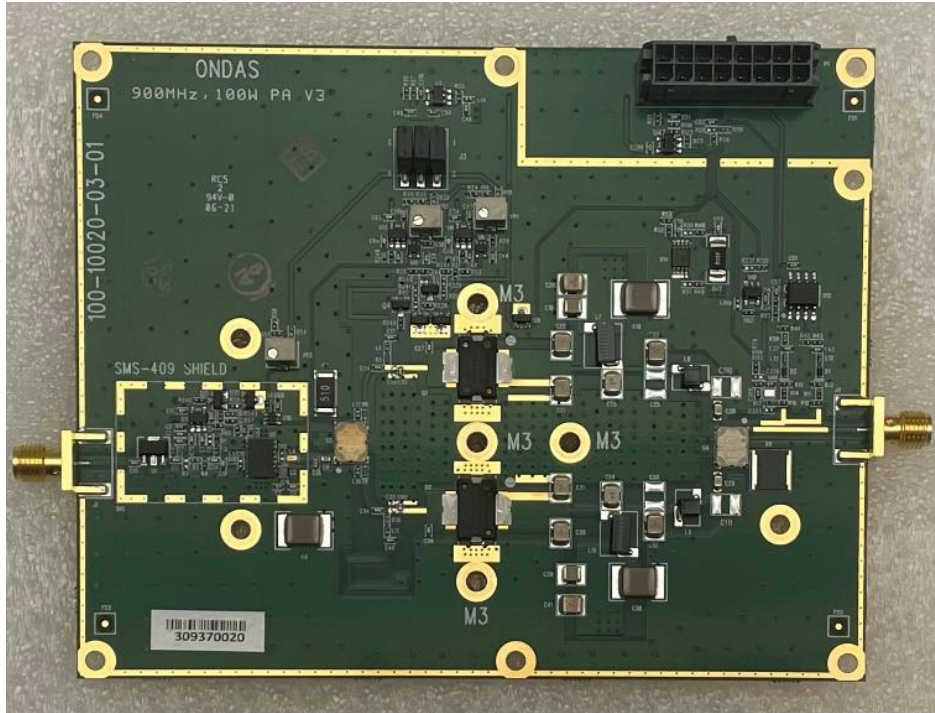


### 1.4 NG-BCP Transmit Receive Switch (TRSW) - Bottom View

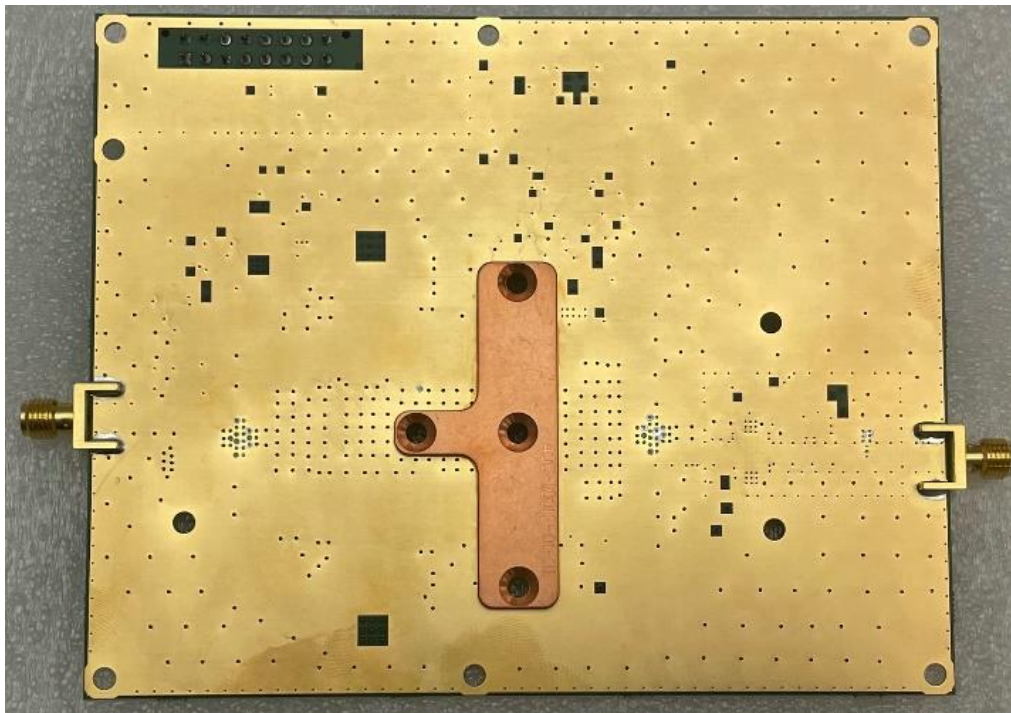




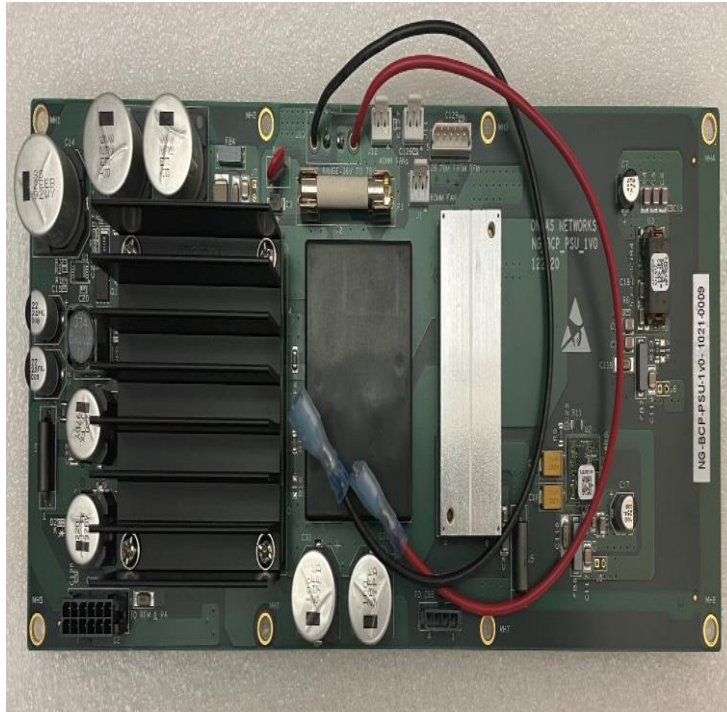
### 1.5 NG-BCP Power Amplifier Board (PA900)- Top View



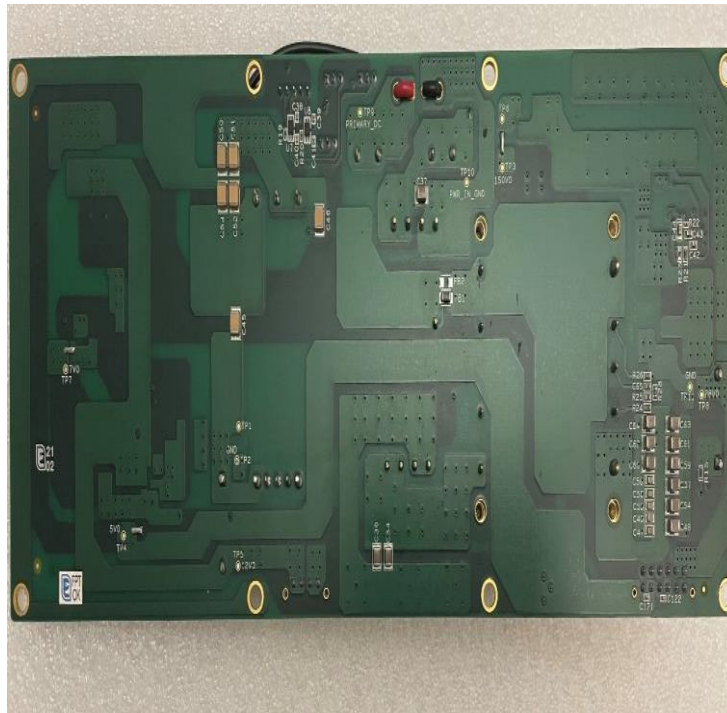
### 1.6 NG-BCP Power Amplifier Board (PA900)- Bottom View



### 1.7 NG-BCP Power Supply Unit (PSU)- Top View



### 1.8 NG-BCP Power Supply Unit(PSU)- Bottom View

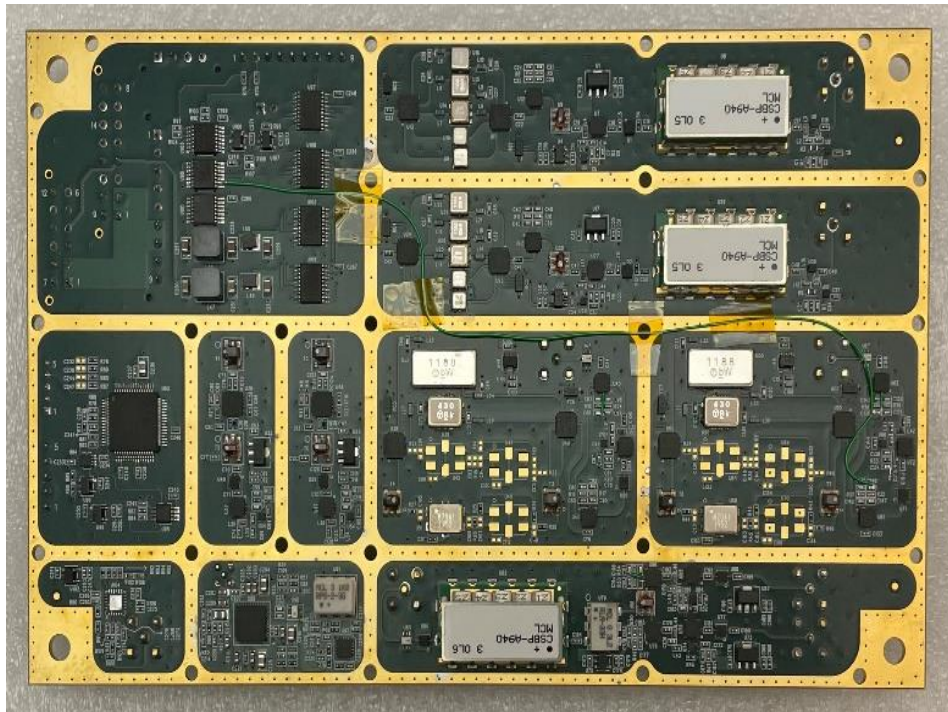




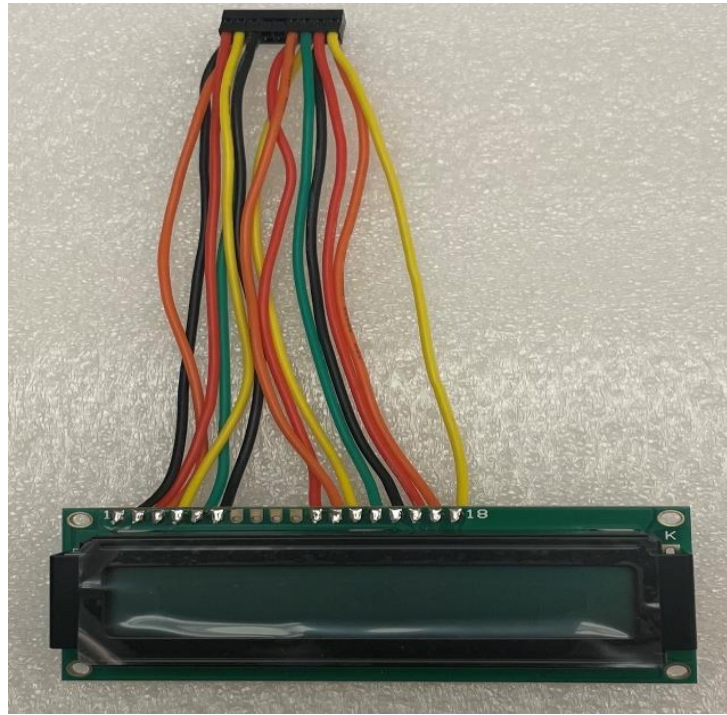
### 1.9 NG-BCP Radio Frequency Module (RFM)-Top View



### 1.10 NG-BCP Radio Frequency Module (RFM)-Bottom View



### 1.11 NG-BCP Display Module (LCD)- Top View



### 1.12 NG-BCP Display Module (LCD)- Bottom View

