

Rhein Tech Laboratories, Inc.
360 Herndon Parkway
Suite 1400
Herndon, VA 20170
<http://www.rheintech.com>

Client: Full Spectrum Inc.
Models: BS100 & MS400
FCC ID: X27-FS-NPCS000
Standard: FCC Part 24
Report #: 2009306

Appendix M: Internal Photographs

Please refer to the following pages.

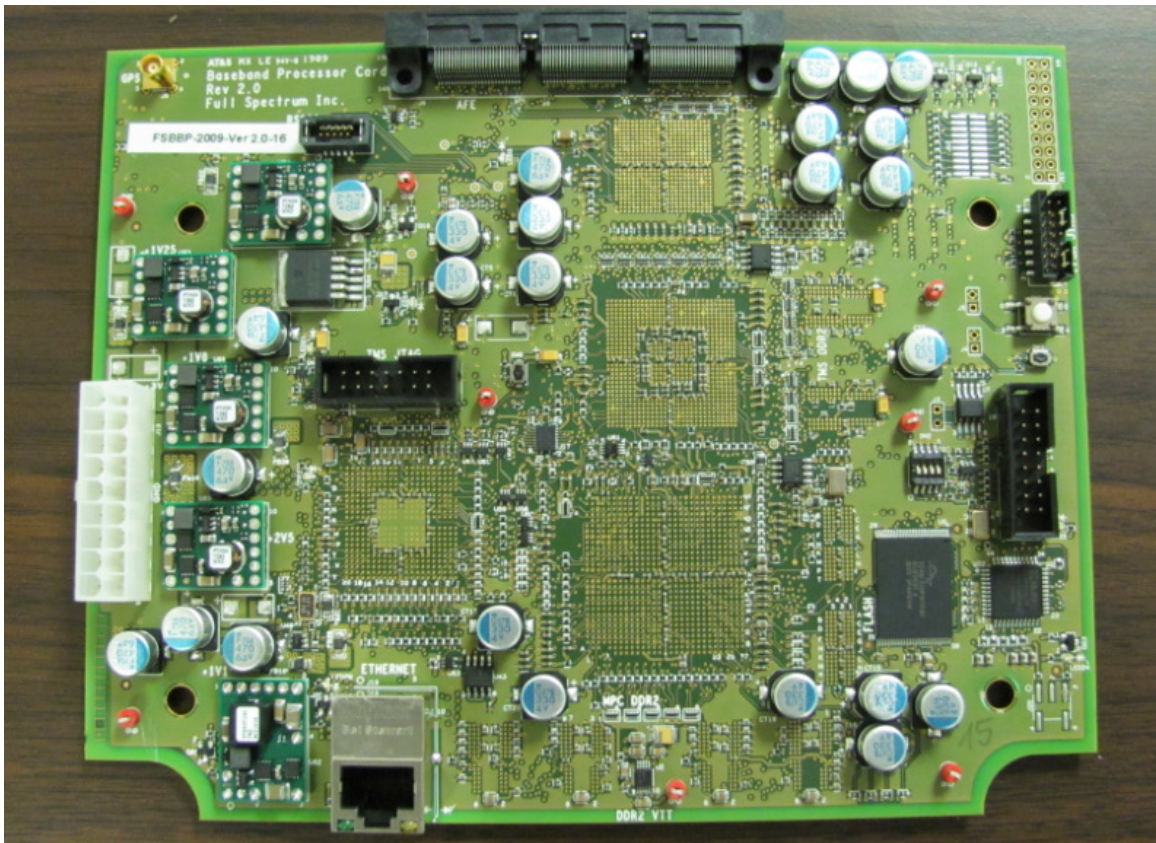


Figure1: BBP Top

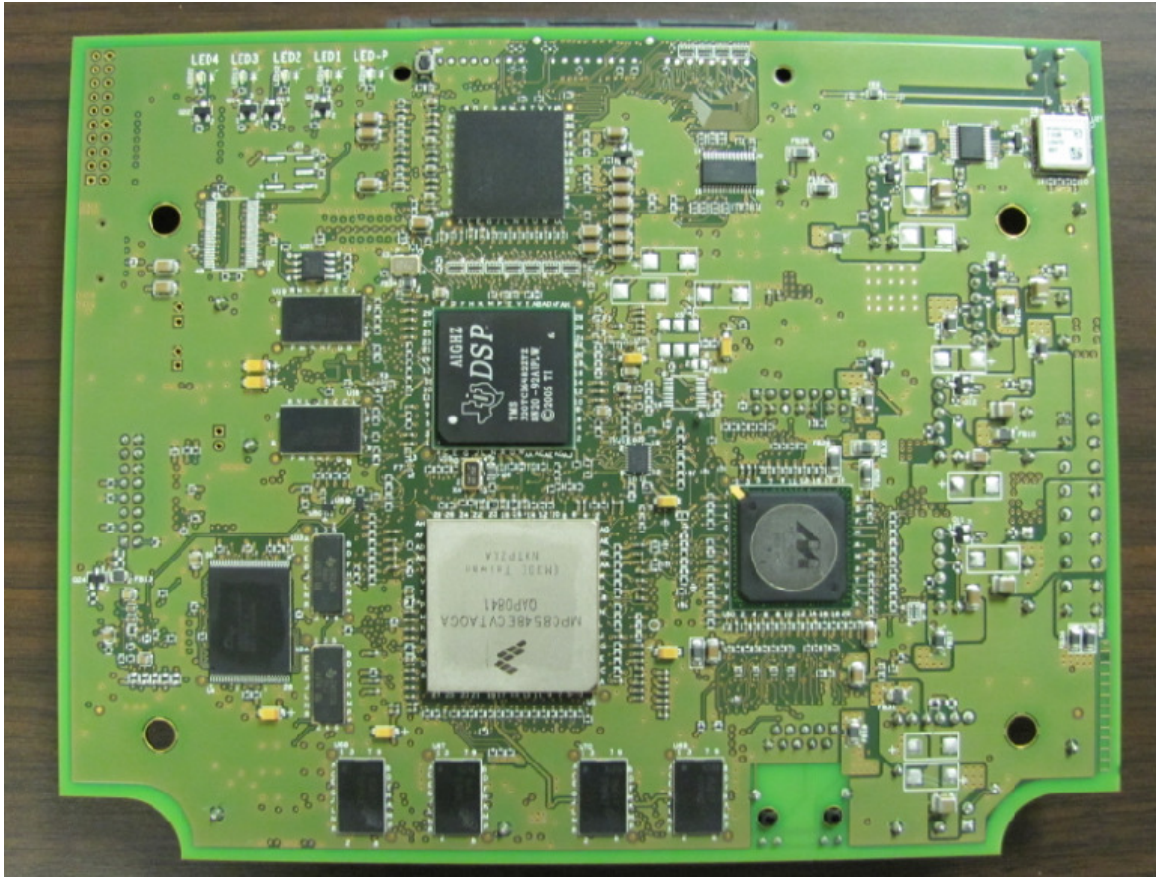


Figure2: BBP Bottom

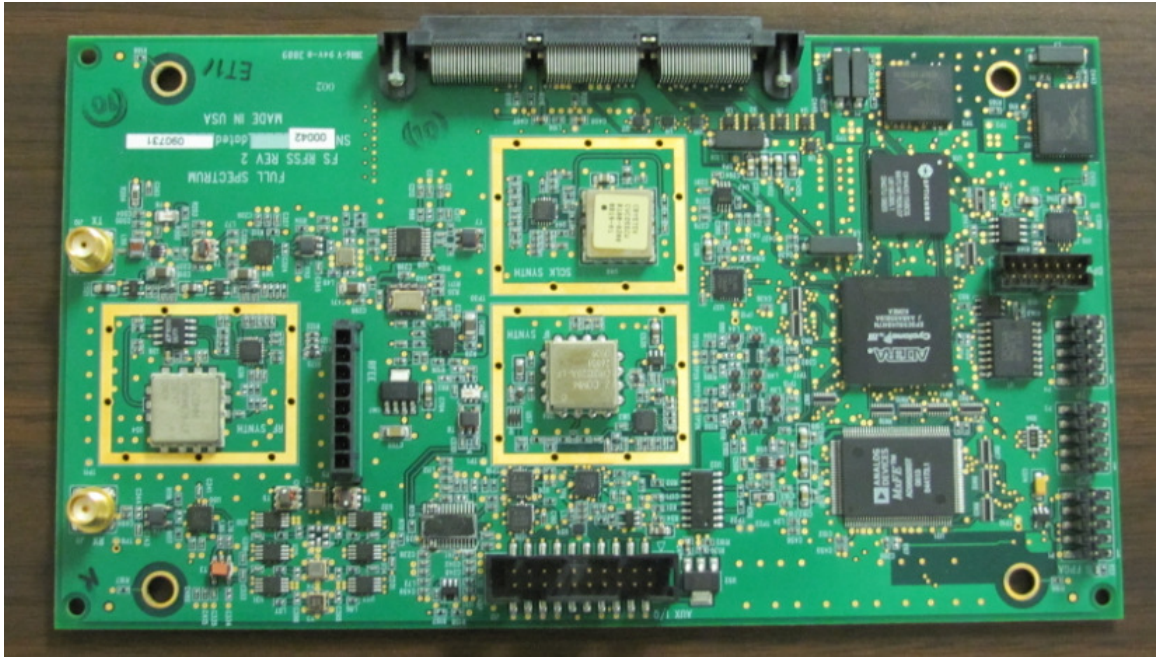


Figure3: RFSS Top

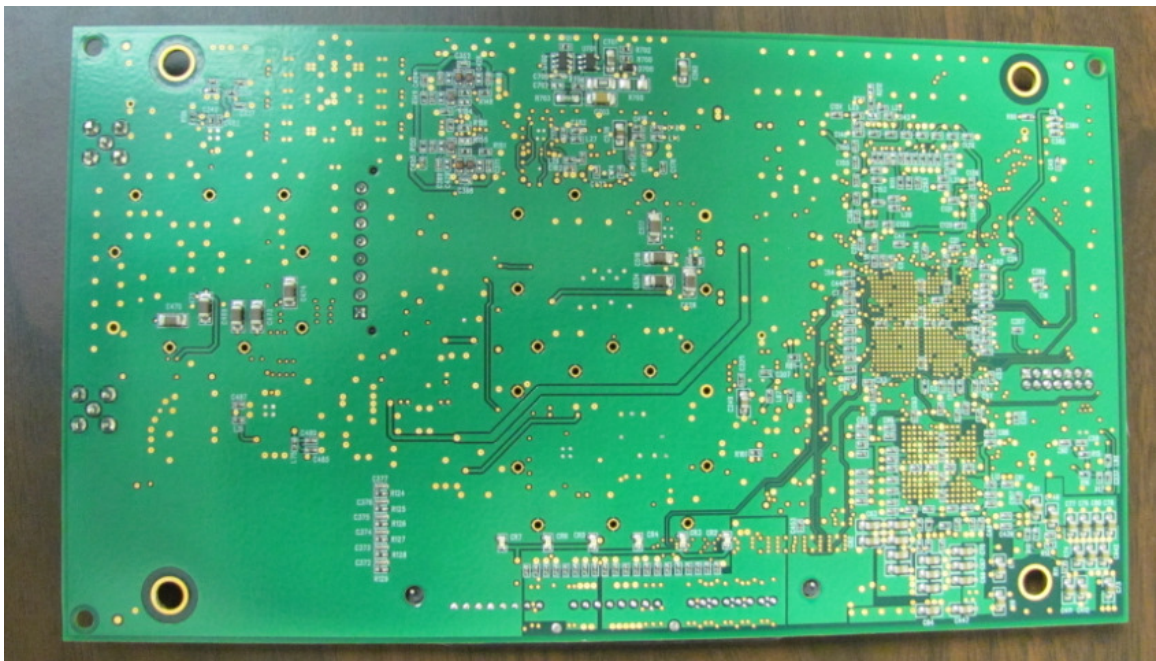


Figure4: RFSS Bottom

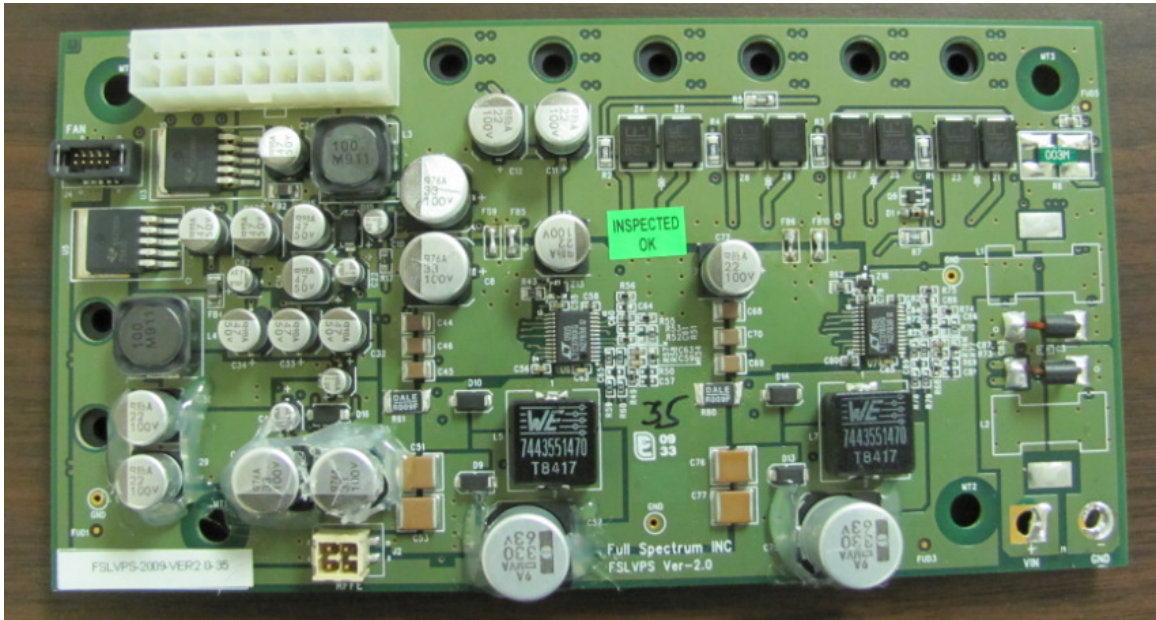


Figure5: LVPS Top

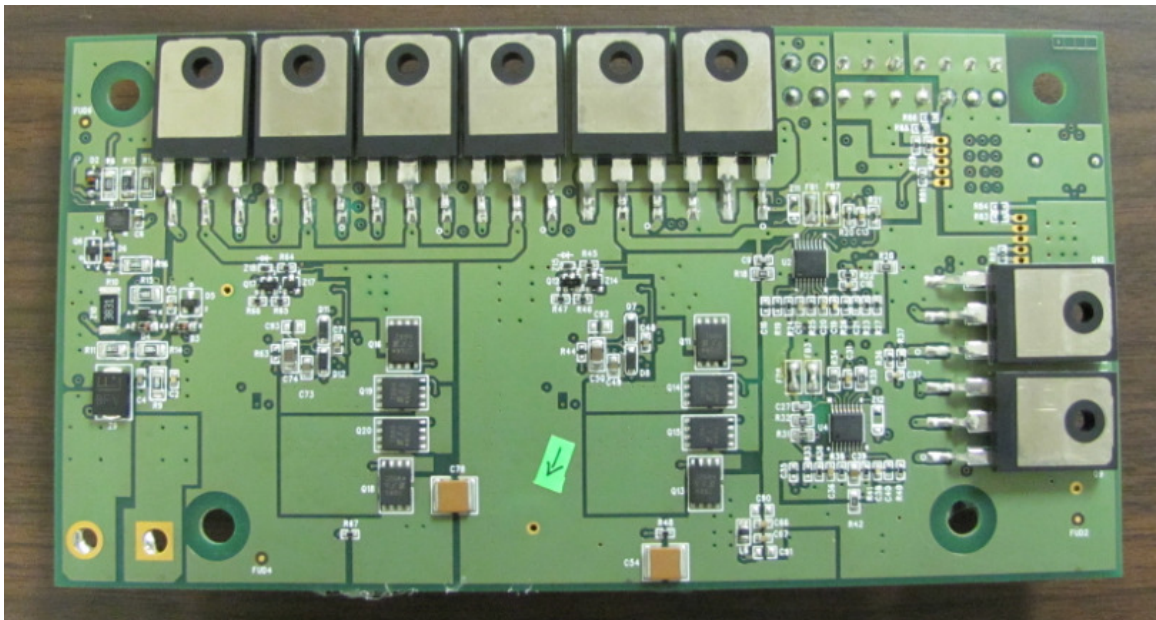


Figure6: LVPS Bottom

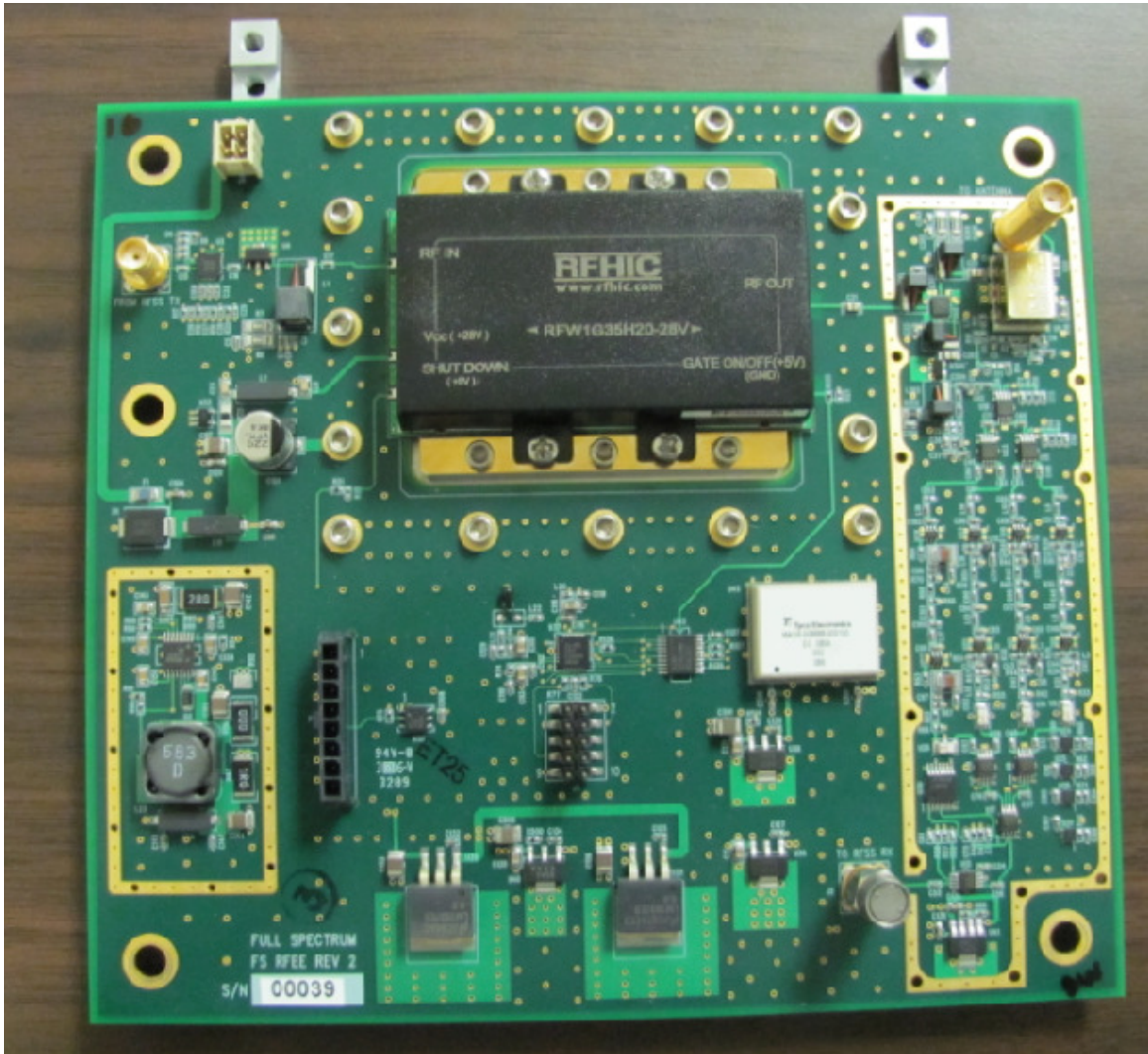


Figure7: RFFE Top

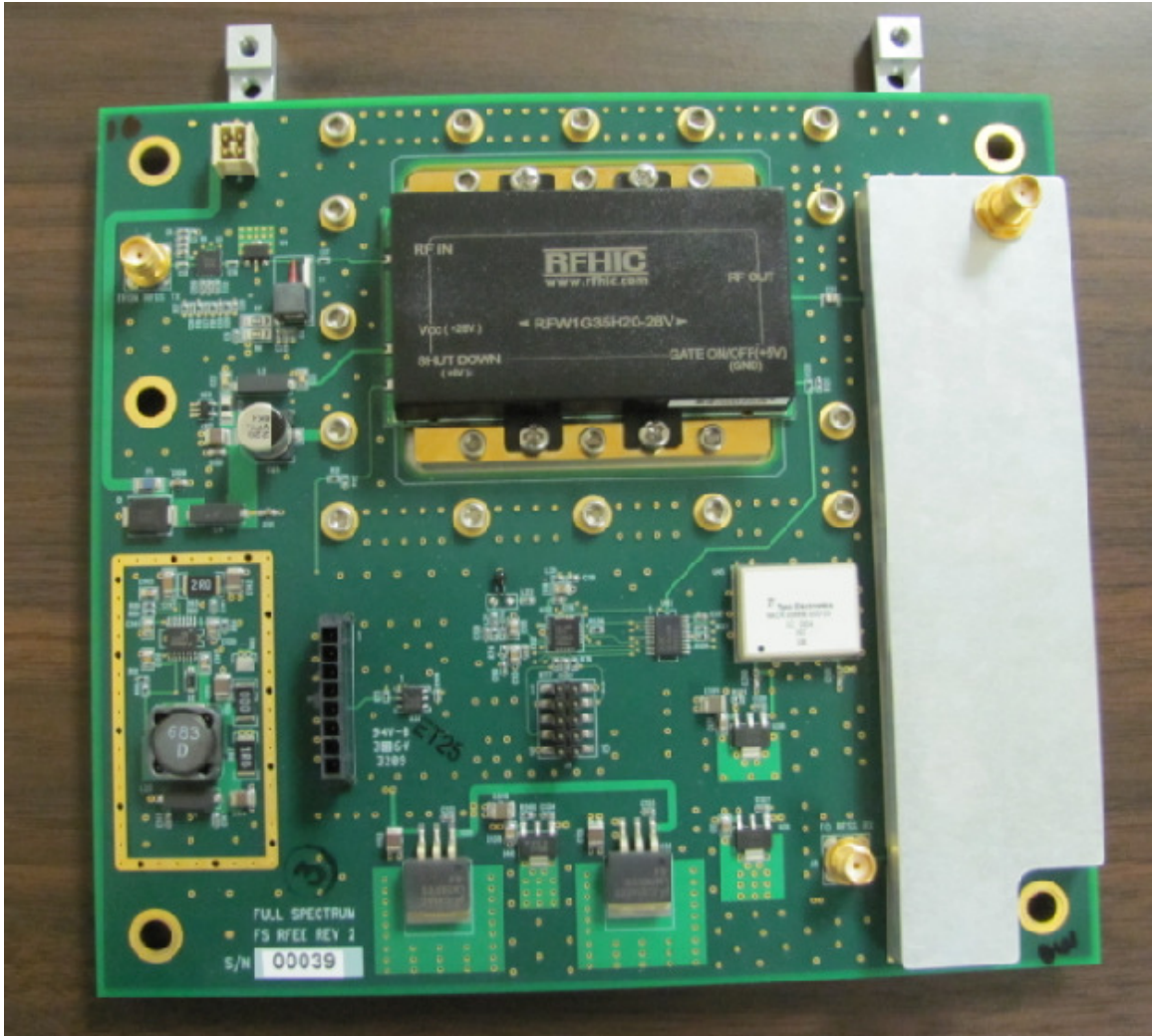


Figure8: RFFE Top with Shield

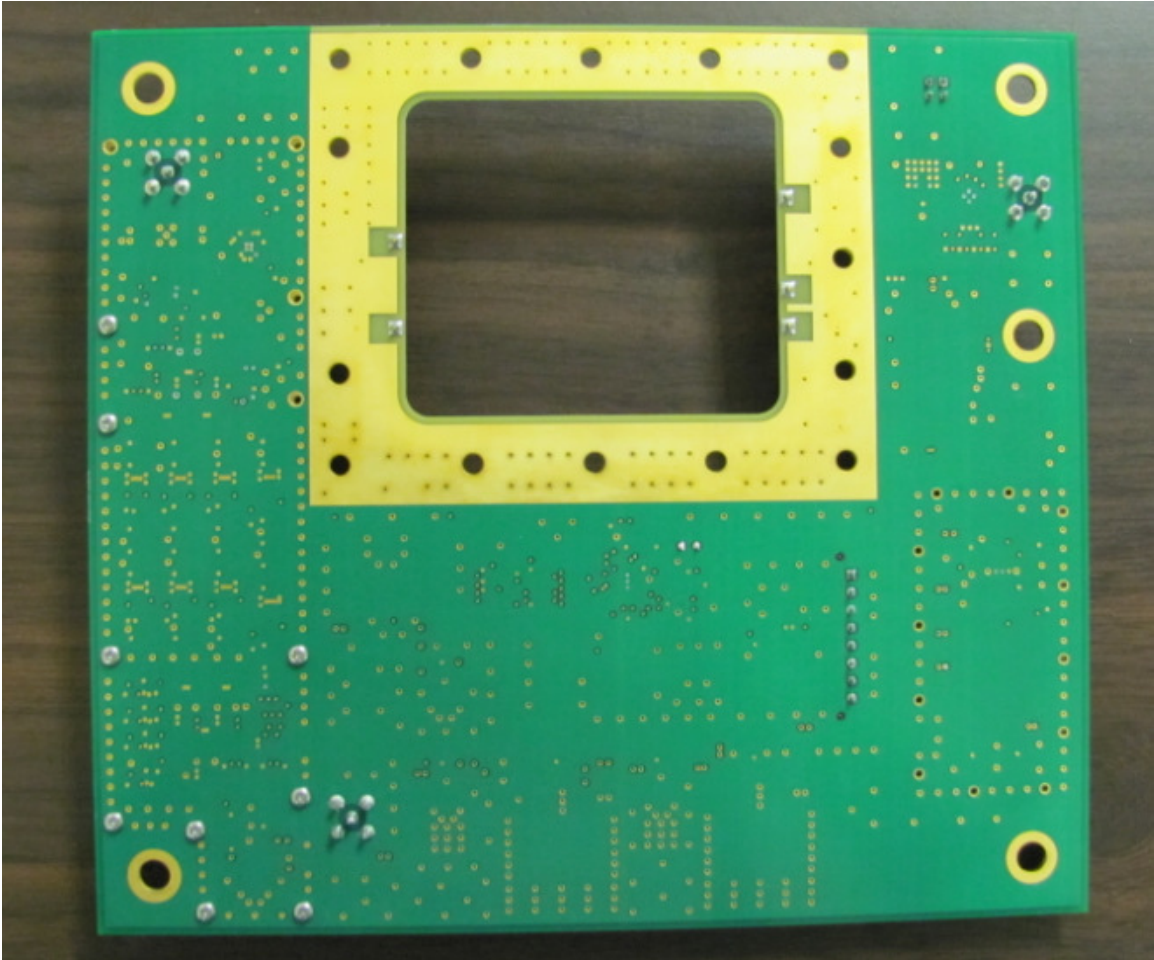


Figure9: RFFE Bottom

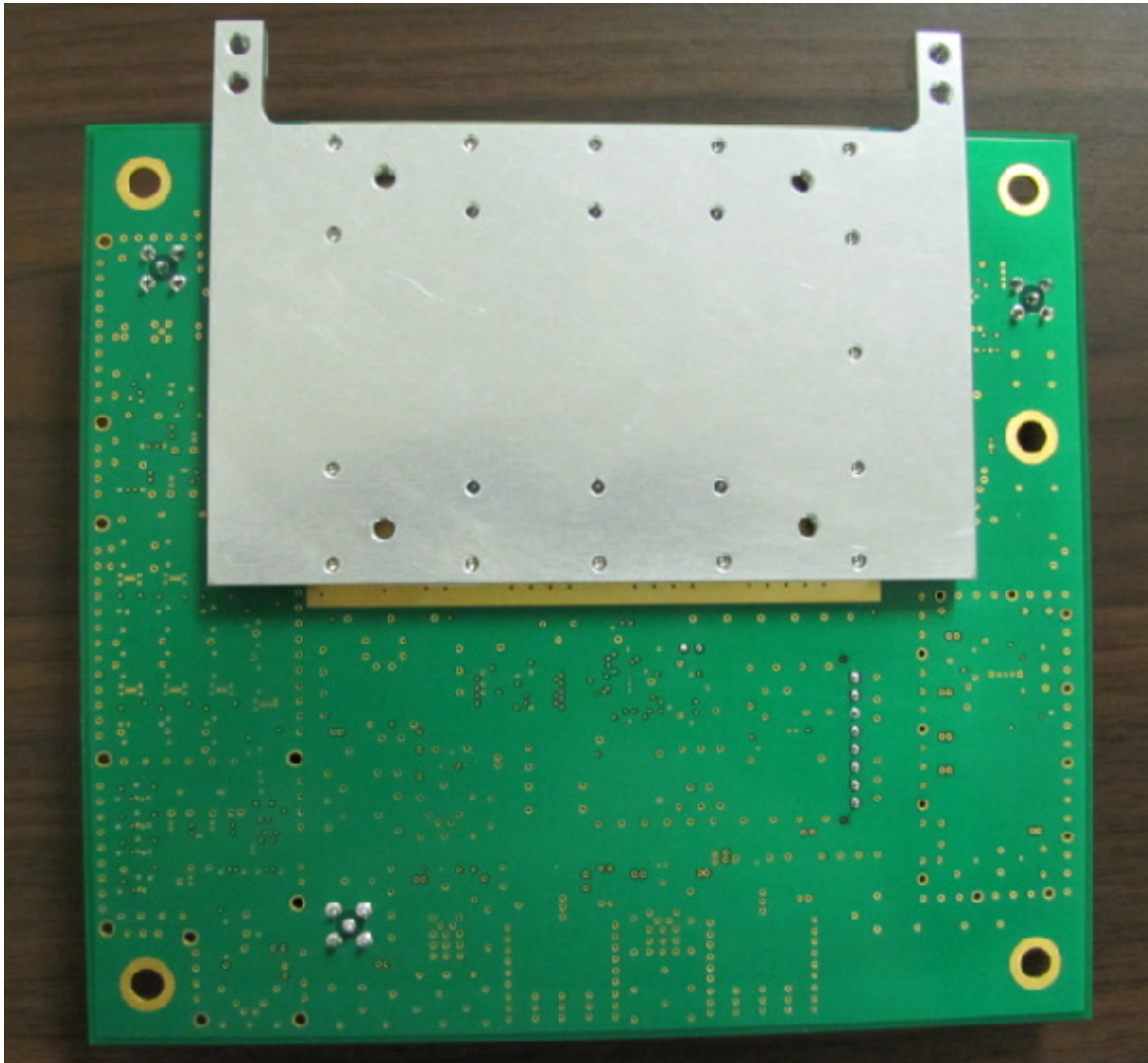


Figure10: RFFE Bottom with heat sink

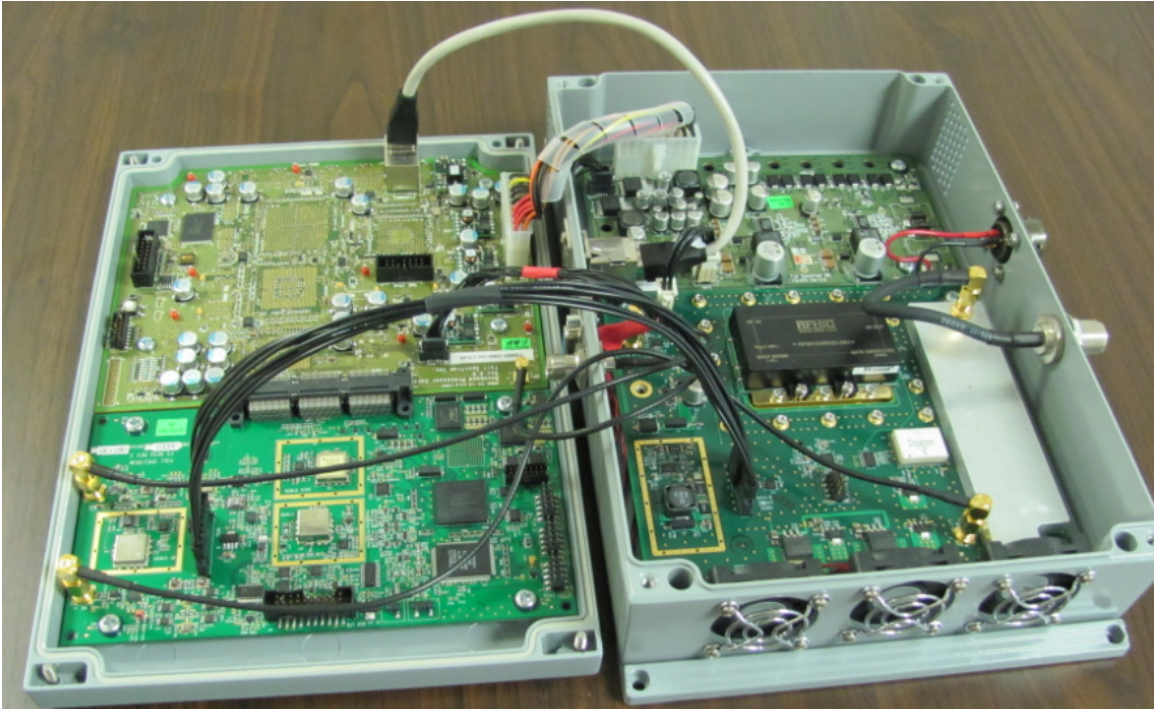


Figure11: Enclosure Inside