

Document Title: <b>SM-2P Internal Photos</b>	Doc. #: <b>0280260</b>	Rev. #: <b>A</b>
---	---------------------------	---------------------



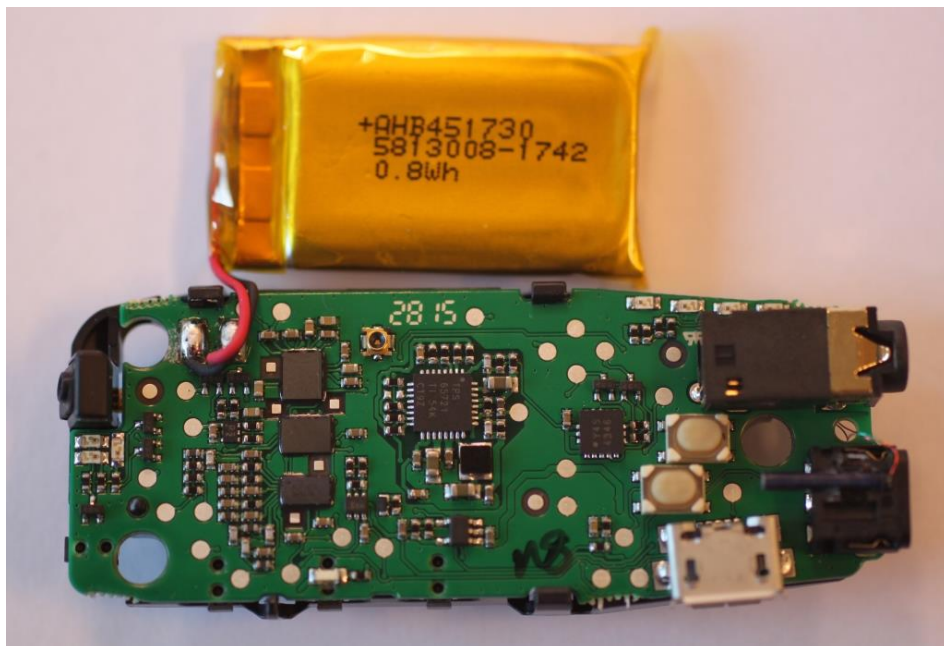
Lautrupbjerg 7  
P.O. Box 130  
DK-2750 Ballerup  
Denmark

Prepared by: Troels Vingborg	This document is part of the SM-2 Pro HW project
Date: 16-11-2015	

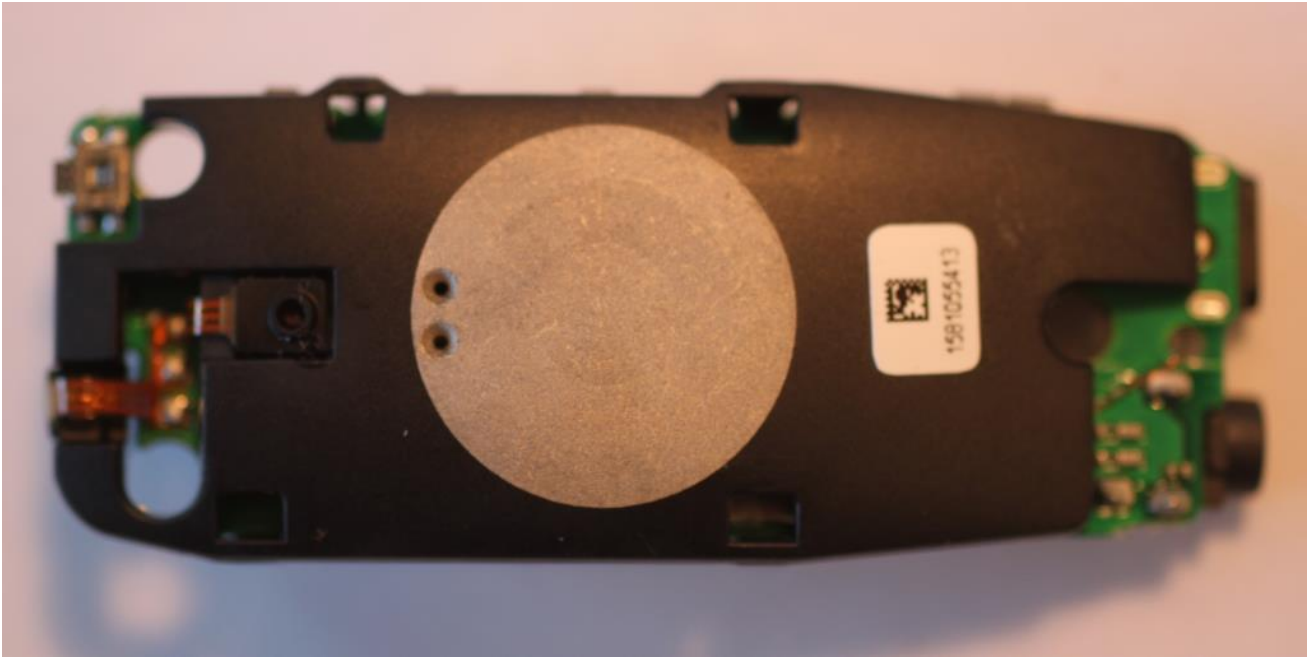
Item number: 19083400 SPOUSE MIC,SM-2P,GEN



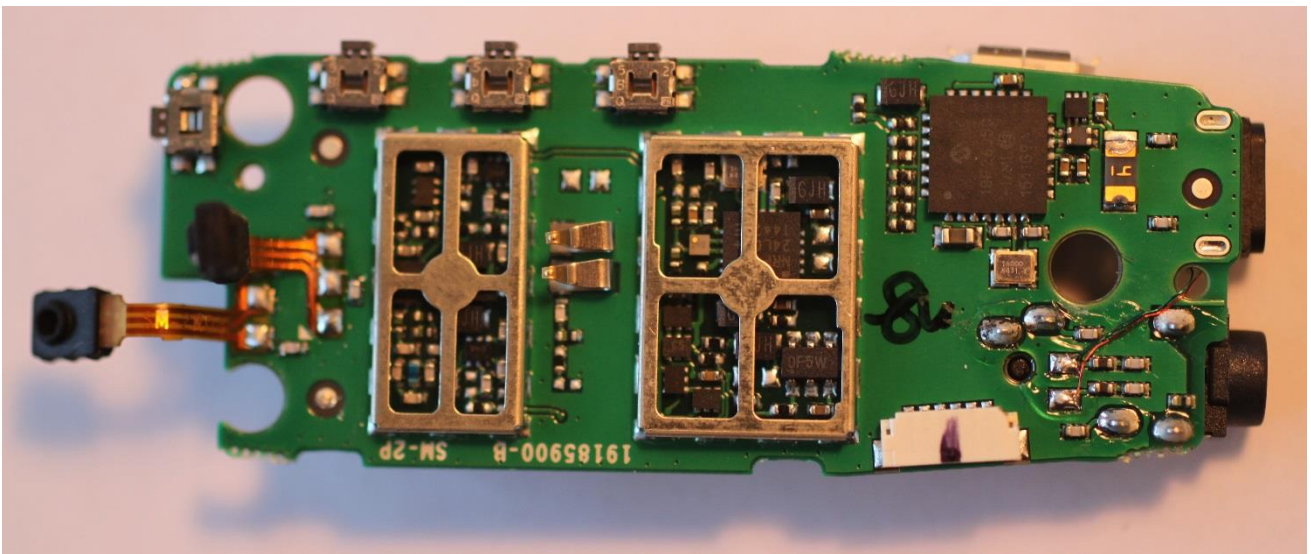
Back side, with /without battery



Document Title: <b>SM-2P Internal Photos</b>	Doc. #: <b>0280260</b>	Rev. #: <b>A</b>
---	---------------------------	---------------------

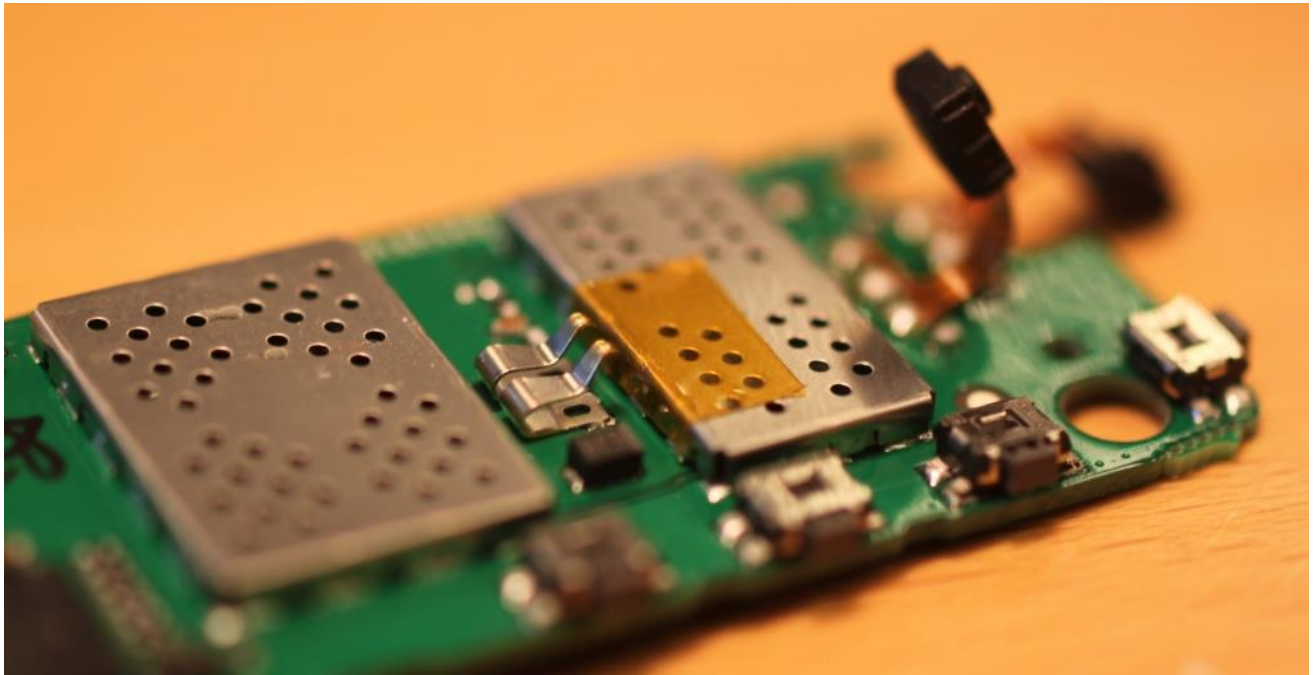


Front side, with antenna frame mounted

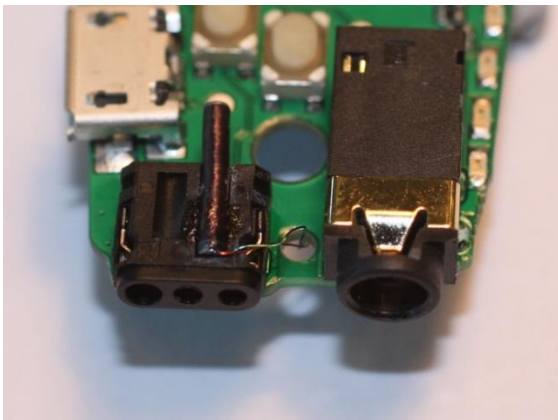


Front side, with antenna frame and ESD lids removed.

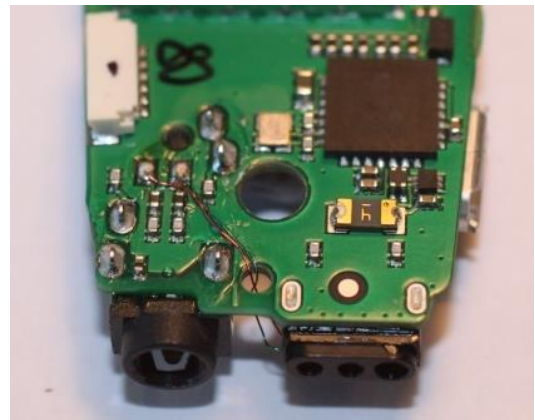
Document Title: <b>SM-2P Internal Photos</b>	Doc. #: <b>0280260</b>	Rev. #: <b>A</b>
---	---------------------------	---------------------



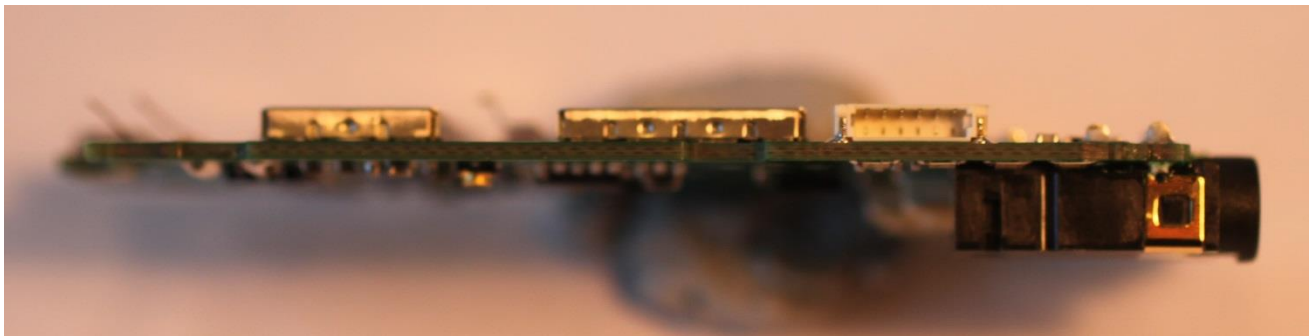
Front side, with ESD lids mounted and a Kapton tape piece for protection of Antenna frame.



Back side, Telecoil mounted on FM connector.

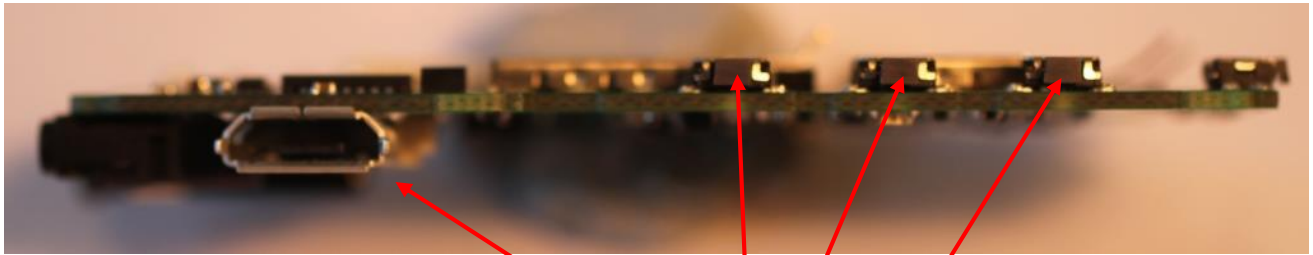


Front side, soldering of TC wires to PCBA)

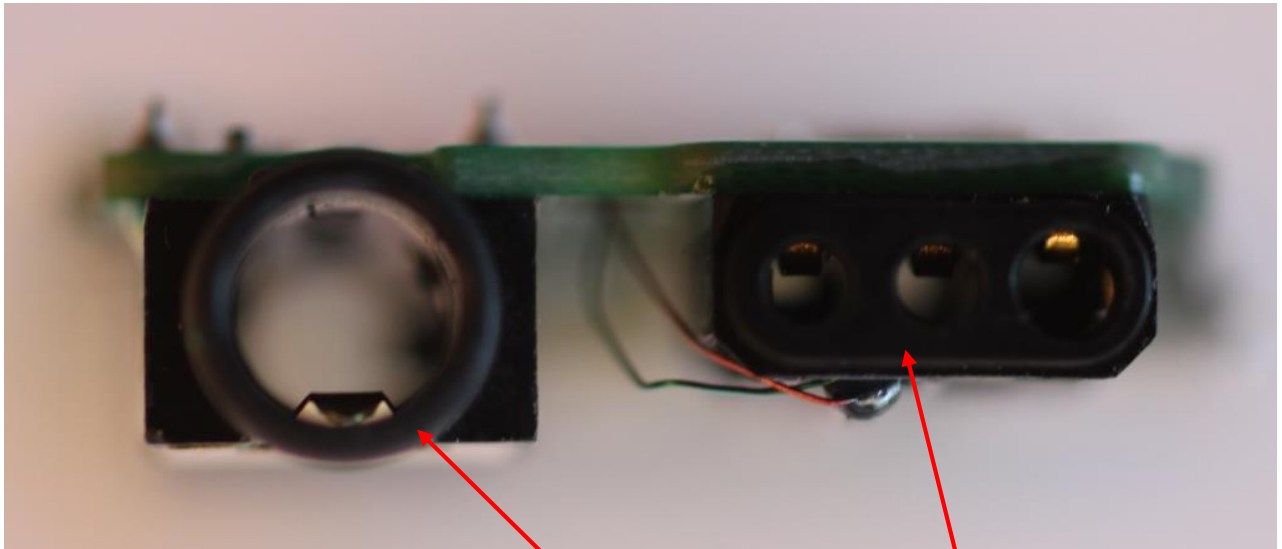


From left side (Line-in connector)

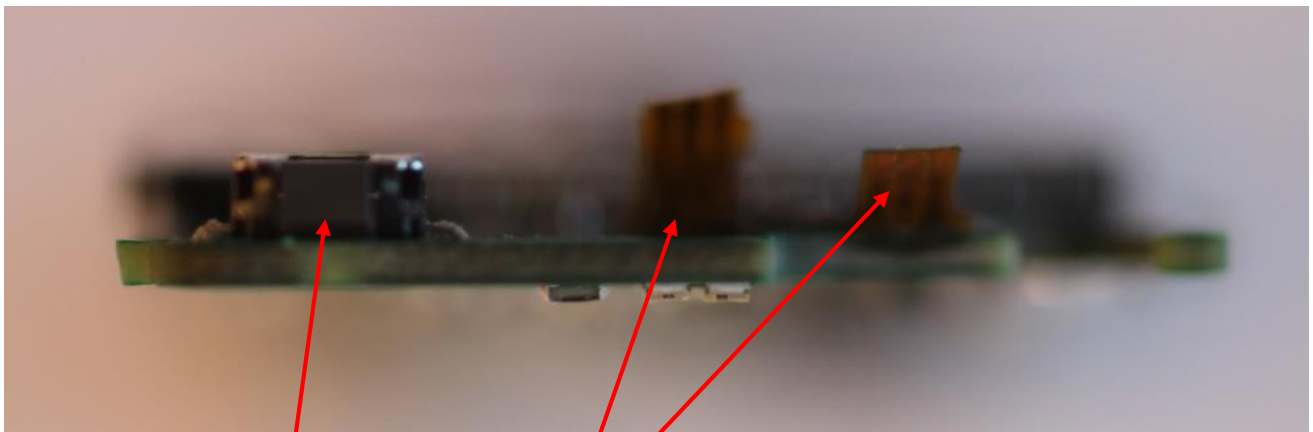
Document Title: <b>SM-2P Internal Photos</b>	Doc. #: <b>0280260</b>	Rev. #: <b>A</b>
---	---------------------------	---------------------



From right side (Micro USB connector, VC down, Mute and VC up buttons)



From bottom end. (Left: Line-in/Mini Jack connector - Right: FM/Euro pin connector).



From Top end. (Left: ON/OFF button - Right: Mic Flex PCBA).