

Document Title: <b>SM-2M Internal Photos</b>	Doc. #: <b>0282470</b>	Rev. #: <b>A</b>
---	---------------------------	---------------------



Lautrupbjerg 7  
P.O. Box 130  
DK-2750 Ballerup  
Denmark

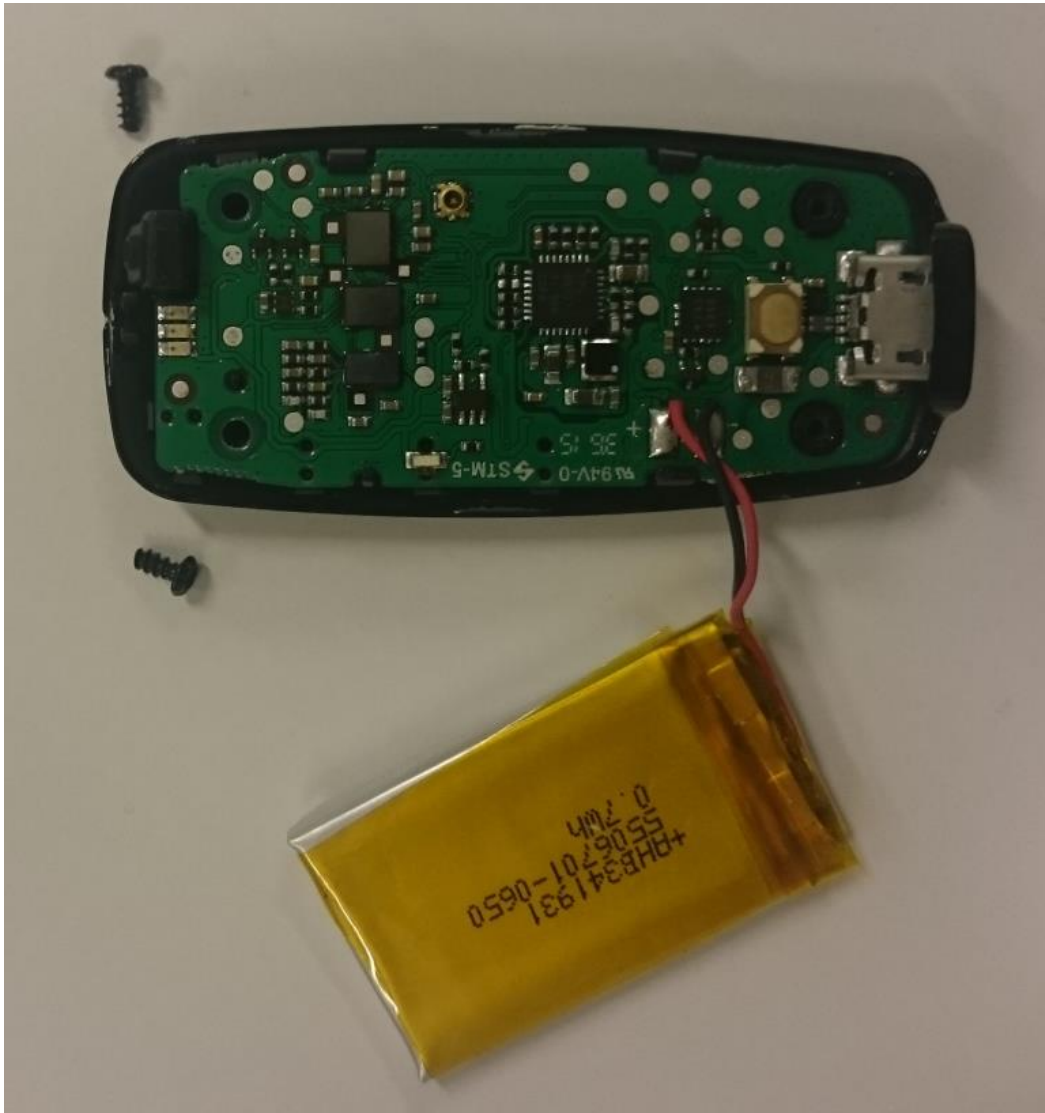
Prepared by: Troels Vingborg	This document is part of the SM-2 Micro HW project
Date: 14-12-2015	

Item number: **19960900 SPOUSE MIC,SM-2 MICRO,GEN**



PCBA inside mechanics

Document Title: <b>SM-2M Internal Photos</b>	Doc. #: <b>0282470</b>	Rev. #: <b>A</b>
---	---------------------------	---------------------

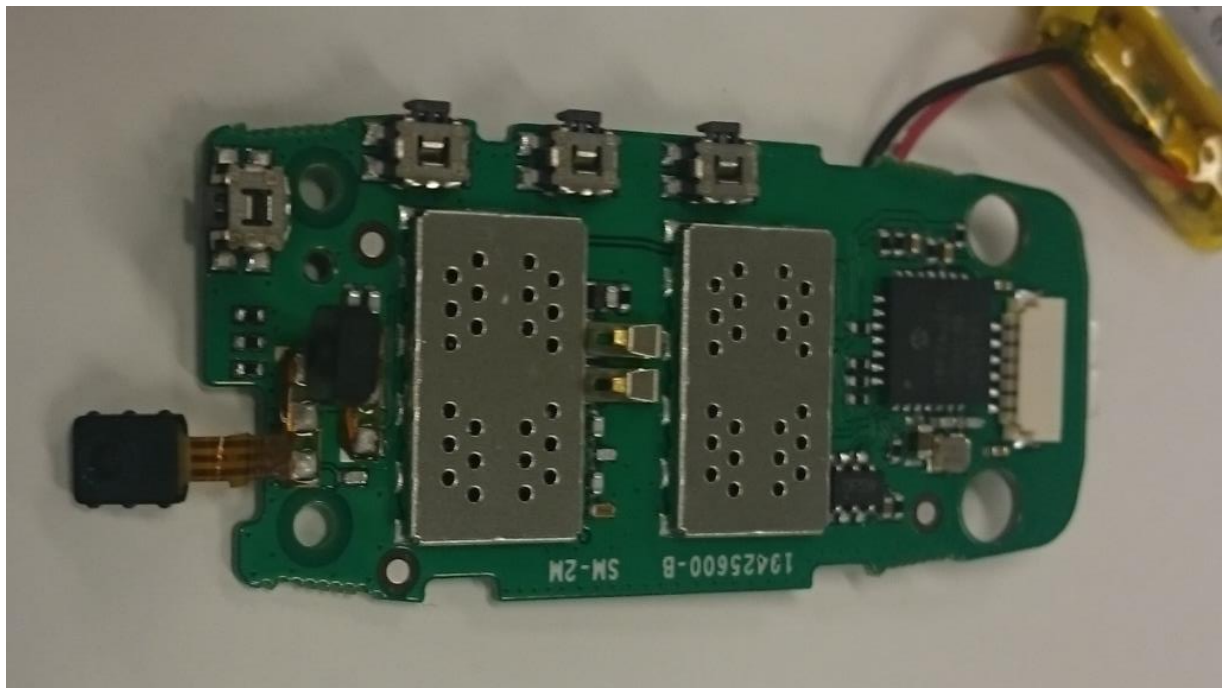


PCBA in top cover – battery removed from back cover

Document Title: <b>SM-2M Internal Photos</b>	Doc. #: <b>0282470</b>	Rev. #: <b>A</b>
---	---------------------------	---------------------

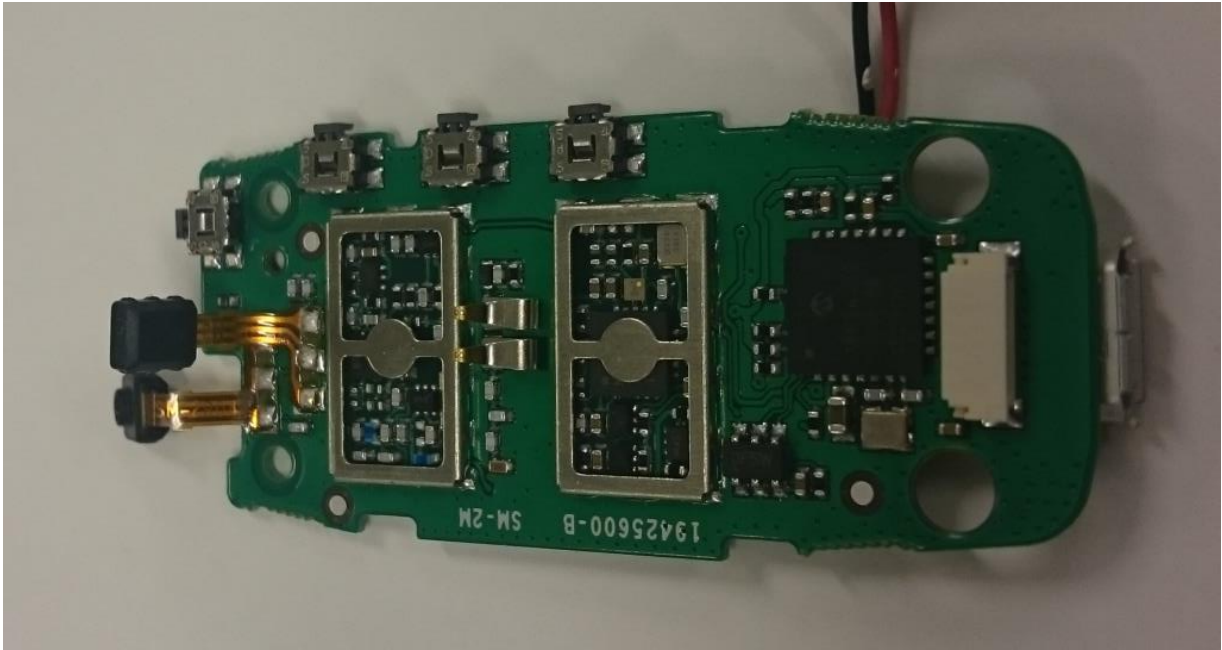


Front side, with antenna frame mounted



Front side, with antenna frame removed.

Document Title: <b>SM-2M Internal Photos</b>	Doc. #: <b>0282470</b>	Rev. #: <b>A</b>
---	---------------------------	---------------------



Front side - ESD lids removed.



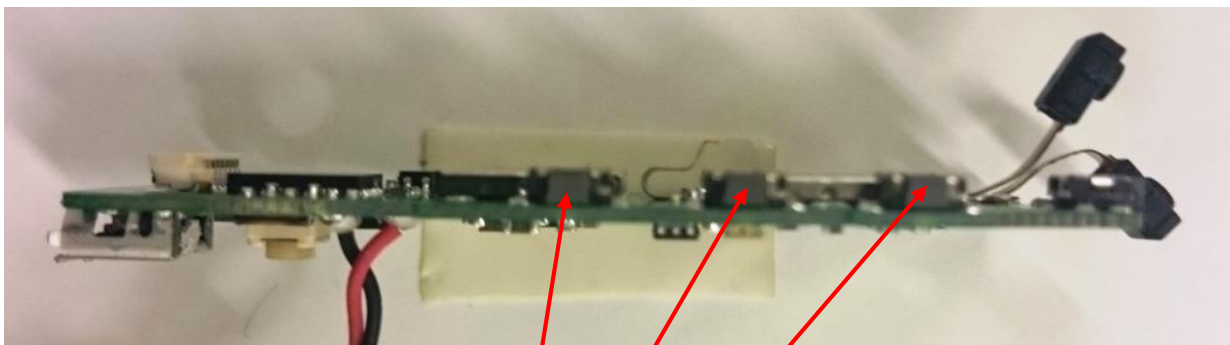
Back side – battery removed



Document Title: <b>SM-2M Internal Photos</b>	Doc. #: <b>0282470</b>	Rev. #: <b>A</b>
---	---------------------------	---------------------



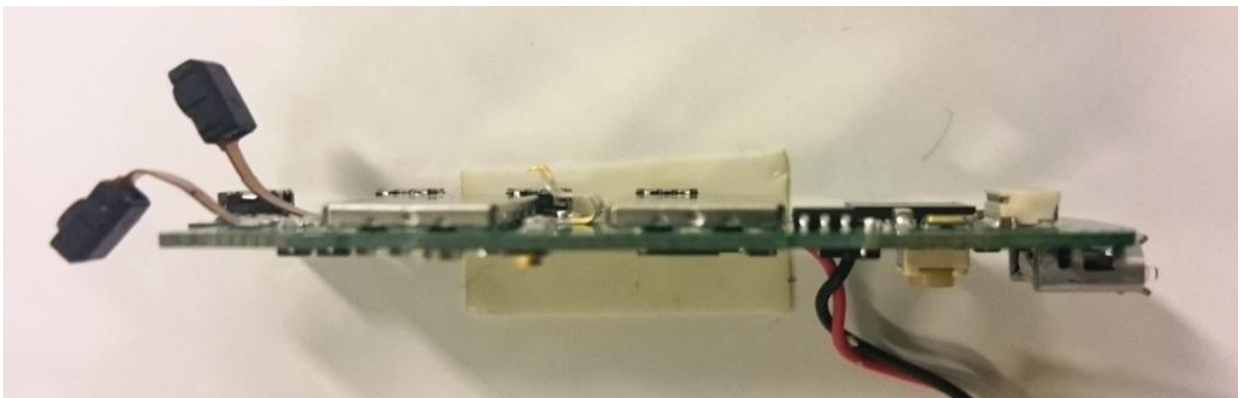
Right side – antenna mounted



Right side (Vol. down, Mute and Vol. up buttons)

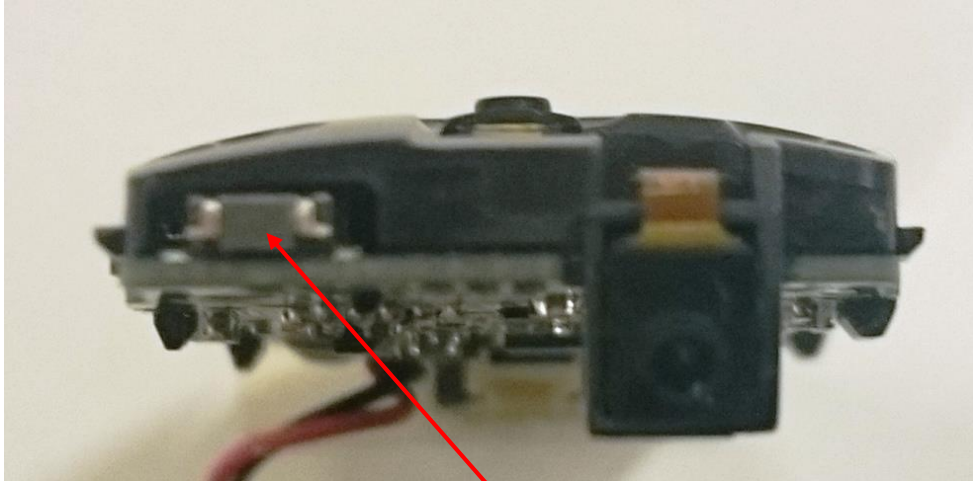


Left side – antenna mounted

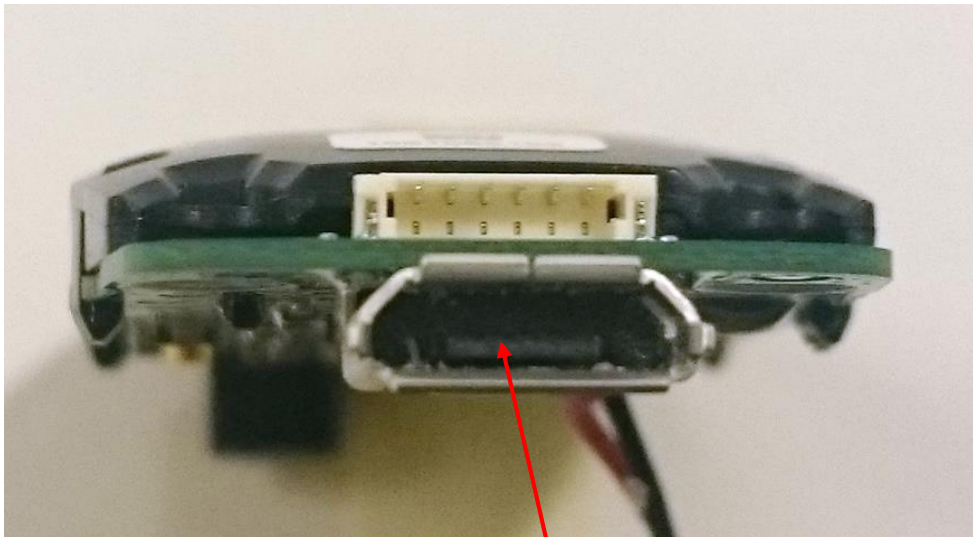


Left side – antenna removed

Document Title: <b>SM-2M Internal Photos</b>	Doc. #: <b>0282470</b>	Rev. #: <b>A</b>
---	---------------------------	---------------------



From top end – on/off button



From bottom – Micro-USB connector