



Photos

Radio parameter test of SAS-1

Performed for GN Hearing A/S

Page 1 of 11

This exhibit is an extract of

DELTA Test Report A506404-1

DANAK-1910853, Rev. A

dated 13 April 2010

containing only the photos of the test set-ups

DELTA
Venlighedsvej 4
2970 Hørsholm
Denmark

Tel. +45 72 19 40 00
Fax +45 72 19 40 01
www.delta.dk
VAT No. 12275110

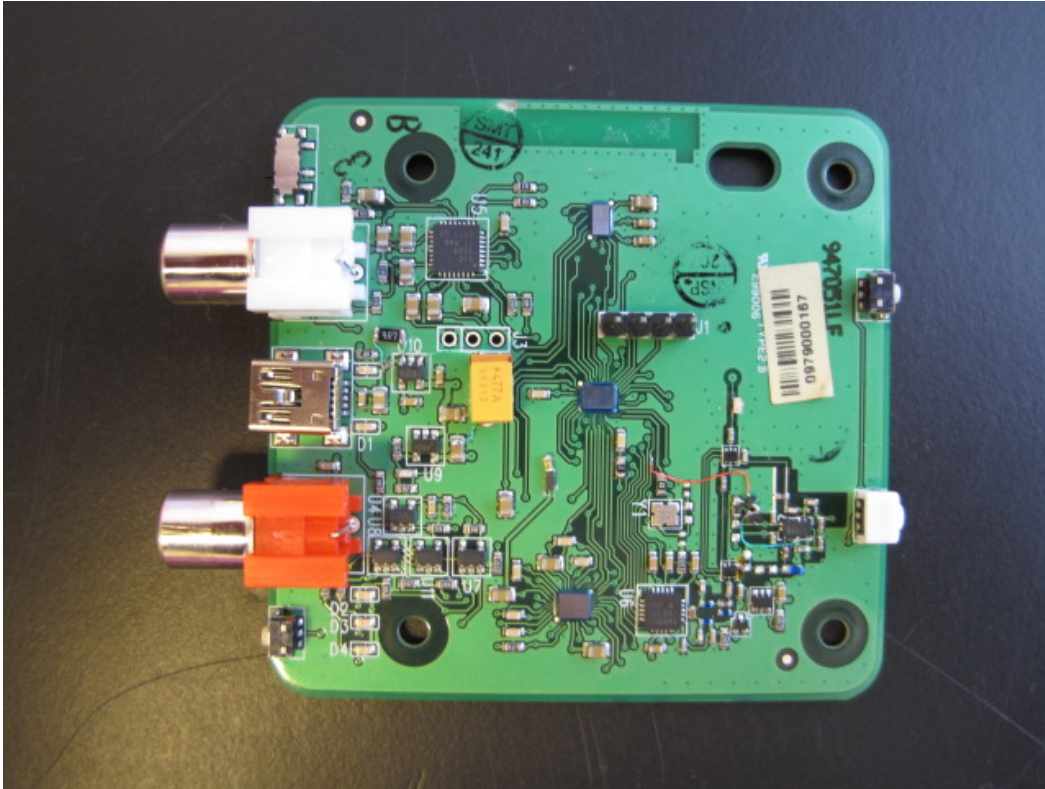


Photo 4.1.1 Test setup regarding measurement of antenna requirement

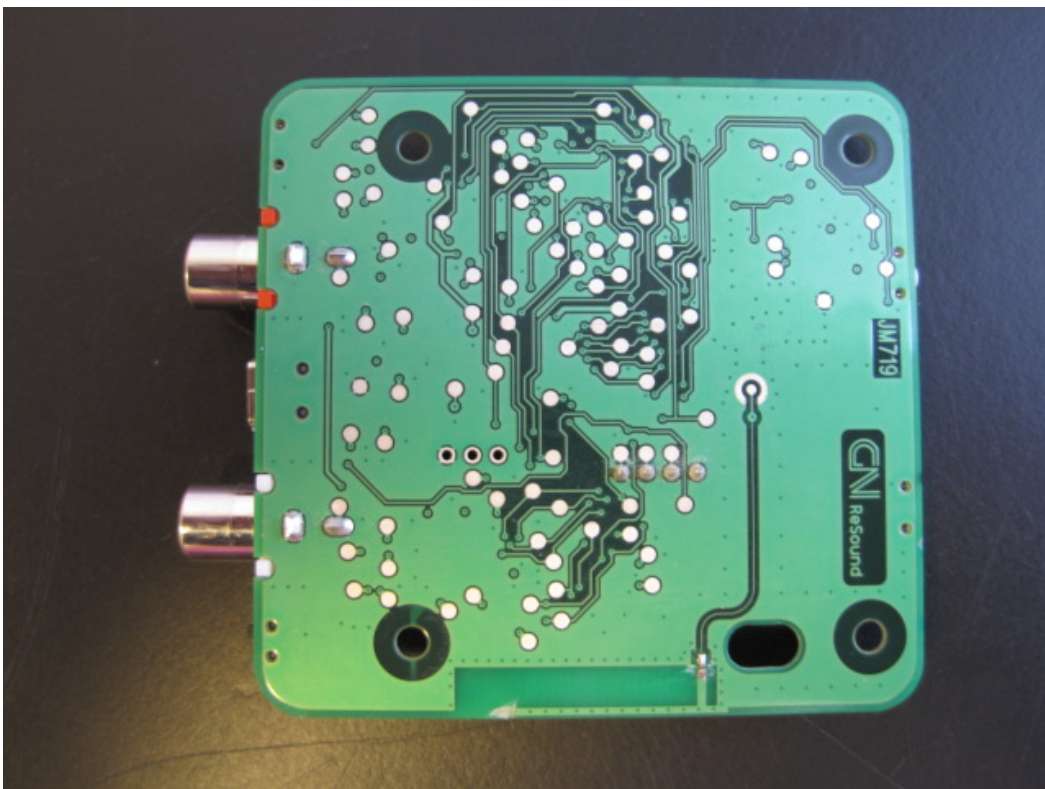


Photo 4.1.2 Test setup regarding measurement of antenna requirement



Photo 4.2.1 Test setup regarding measurement of radio frequency voltage on mains.



Photo 4.2.2 Test setup regarding measurement of radio frequency voltage on mains.

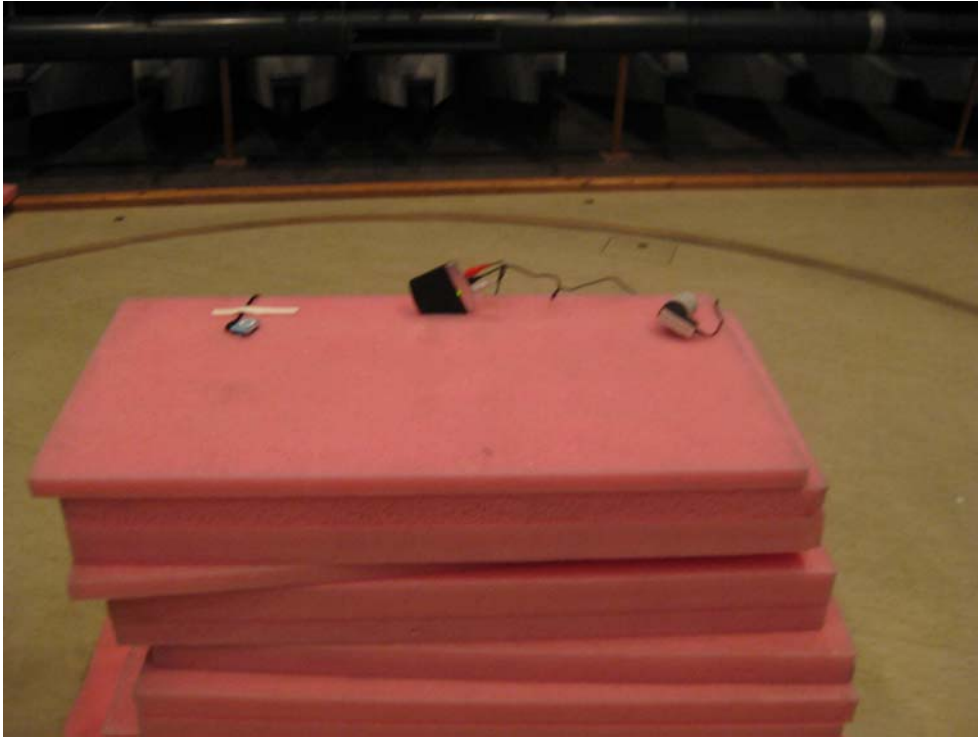


Photo **Error! No text of specified style in document..1** Test setup regarding measurement of radiated emission, 0.009-30 MHz.



Photo **Error! No text of specified style in document..2** Test setup regarding measurement of radiated emission, 0.009-30 MHz.

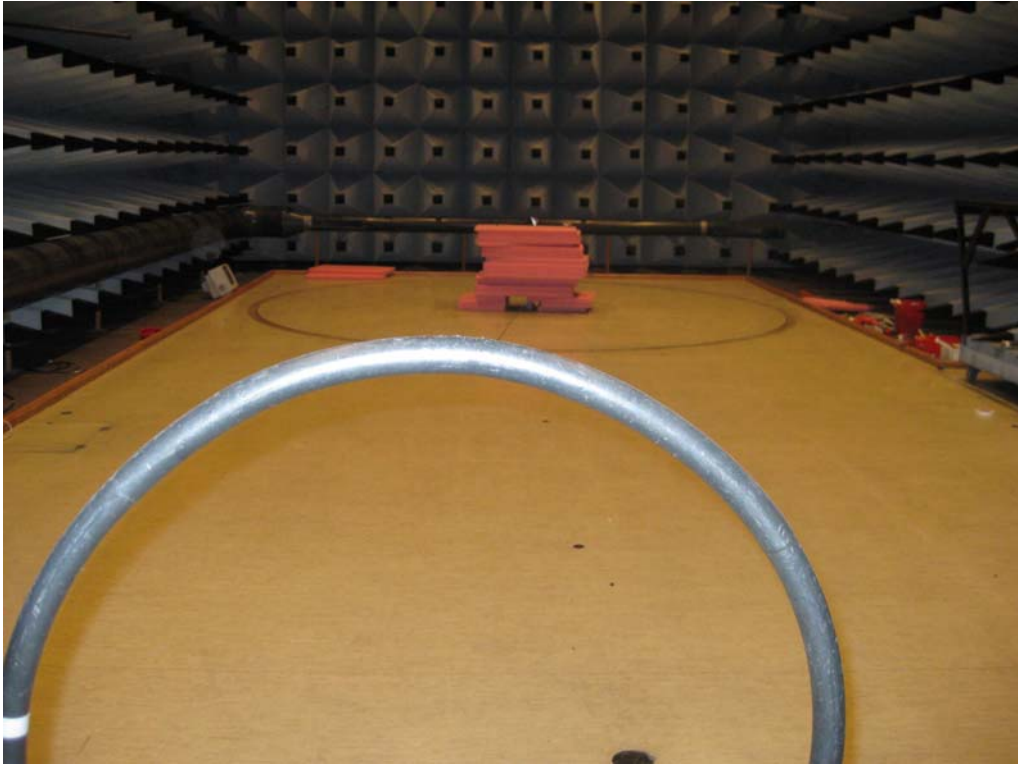


Photo **Error! No text of specified style in document..3** Test setup regarding measurement of radiated emission, 0.009-30 MHz.

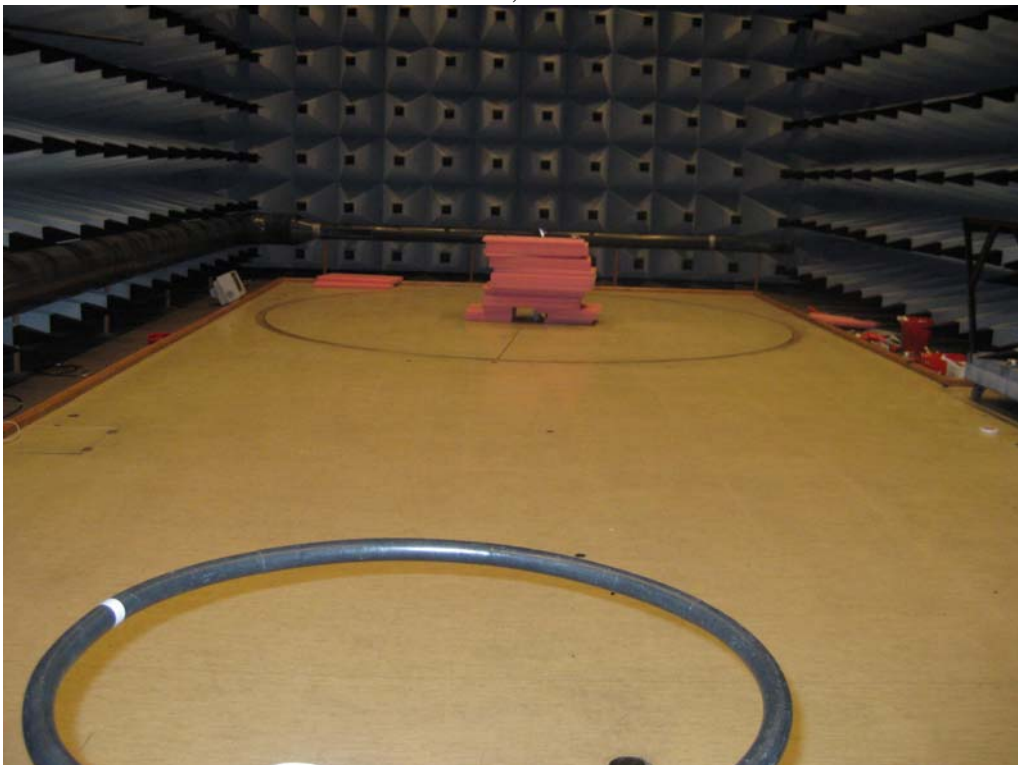


Photo **Error! No text of specified style in document..4** Test setup regarding measurement of radiated emission, 0.009-30 MHz.



Photo 4.4.1 Test setup regarding measurement of radiated emission, 30 to 1000 MHz.

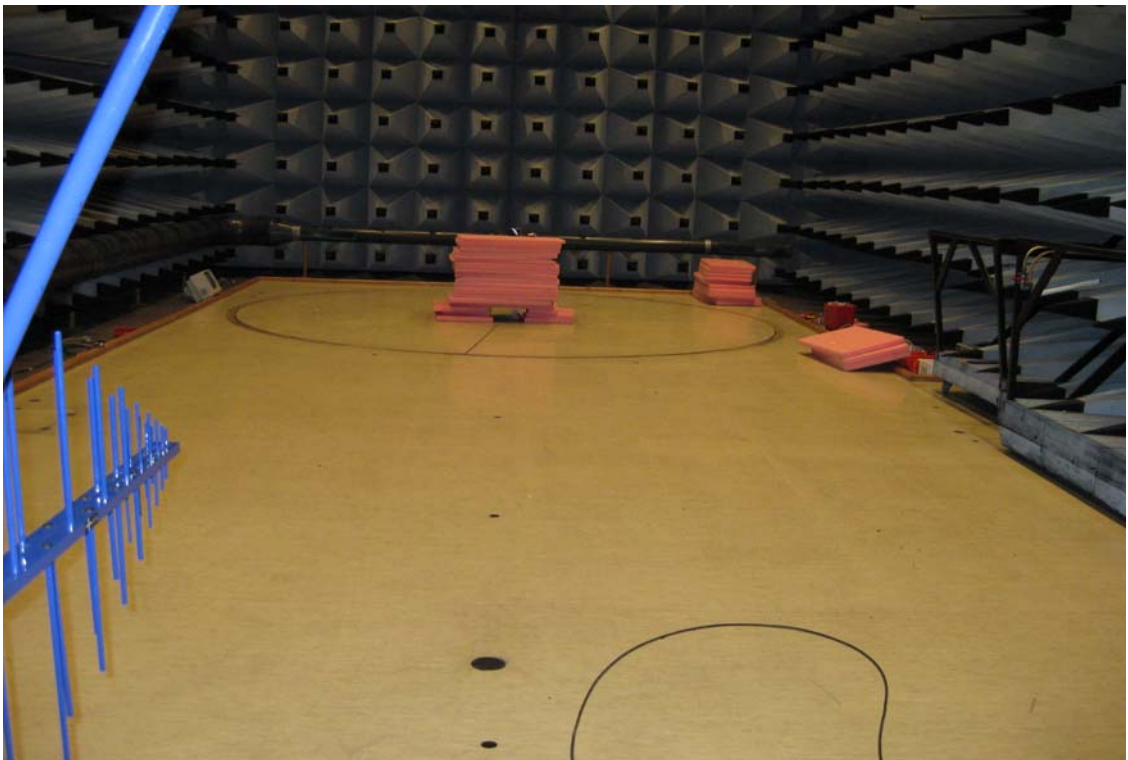


Photo 4.4.2 Test setup regarding measurement of radiated emission, 30 to 1000 MHz.

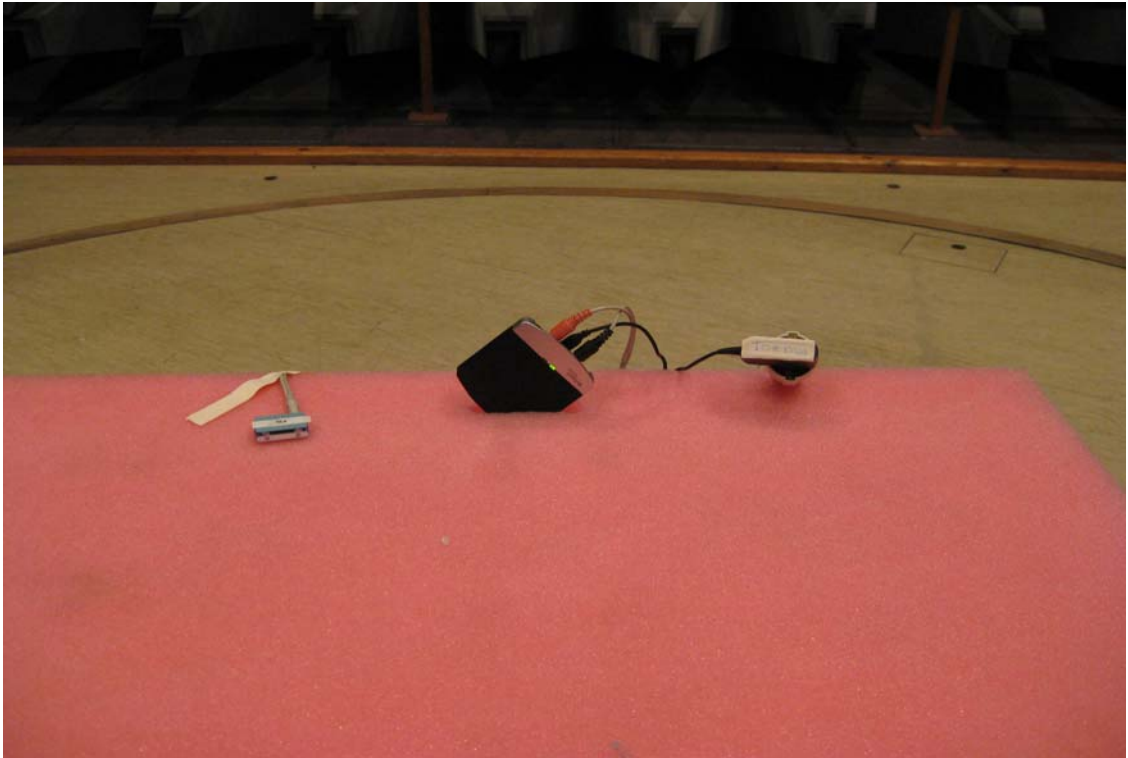


Photo 4.5.1 Test setup regarding measurement of radiated emission, 1 GHz to 25 MHz.

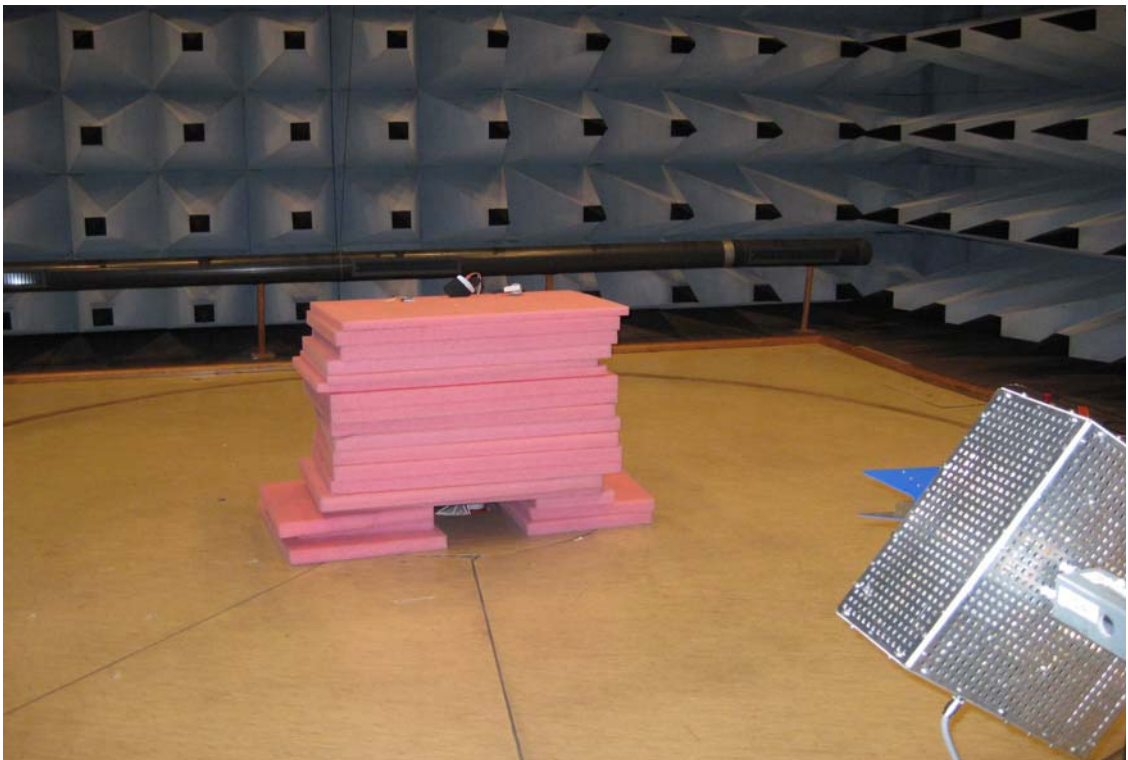


Photo 4.5.2 Test setup regarding measurement of radiated emission, 1 GHz to 25 MHz.

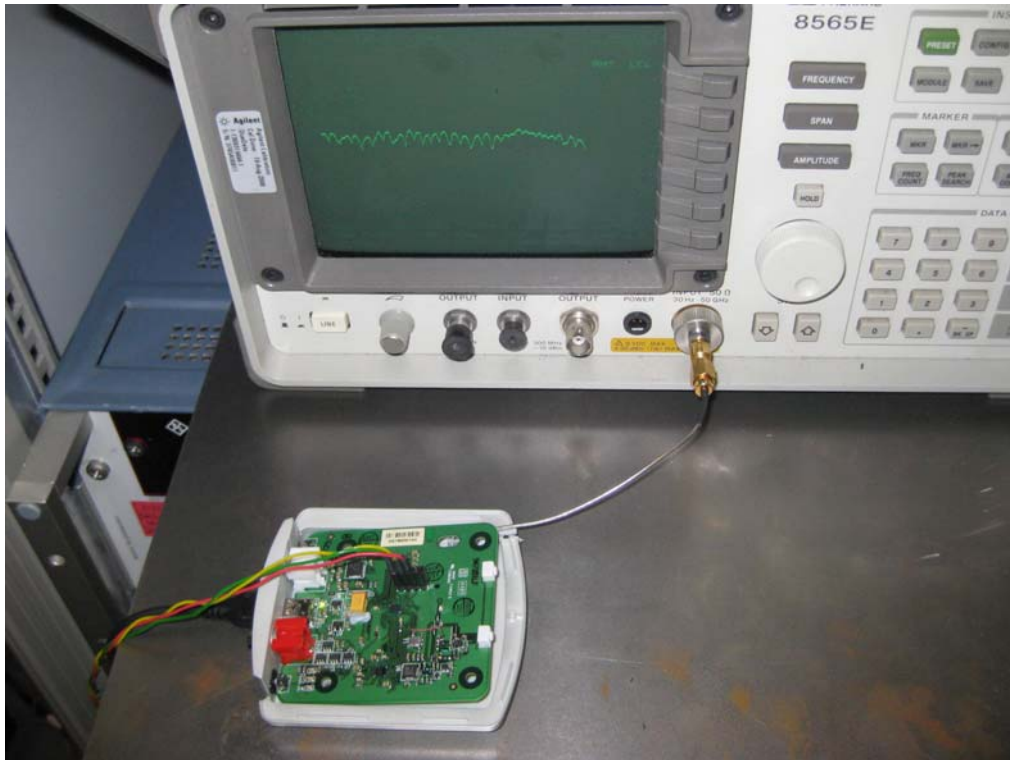


Photo 4.6.1 Test setup regarding measurement of the 6 dB bandwidth.



Photo 4.6.2 Test setup regarding measurement of the 6 dB bandwidth.



Photo 4.7.1 Test setup regarding measurement of conducted power output.

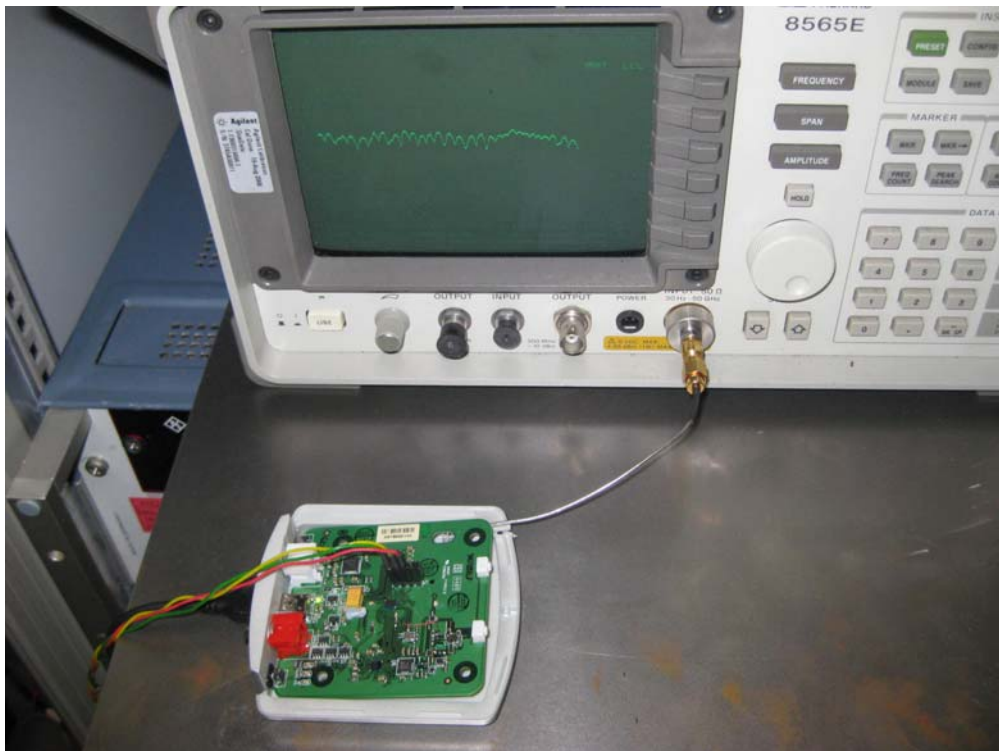


Photo 4.7.2 Test setup regarding measurement of conducted power output.



Photo 4.8.1 Test setup regarding measurement of conducted spurious emission.

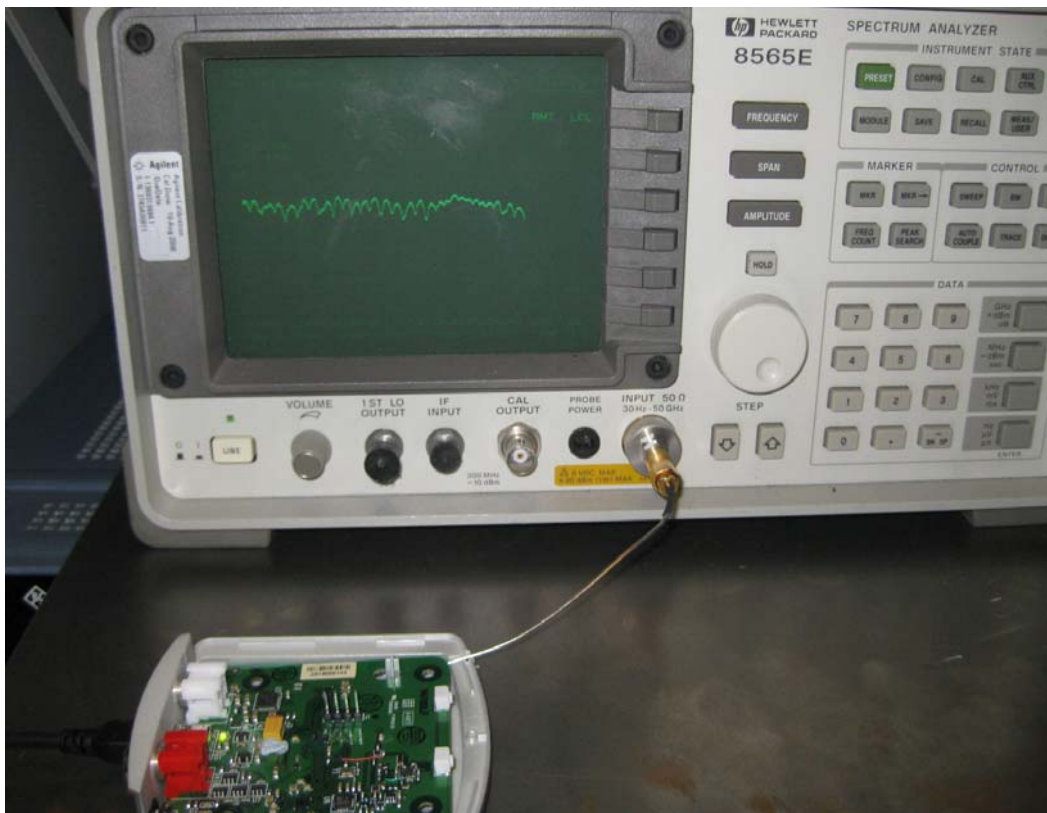


Photo 4.8.2 Test setup regarding measurement of conducted spurious emission.



Photo 4.9.1 Test setup regarding measurement of power spectral density.



Photo 4.9.2 Test setup regarding measurement of power spectral density.