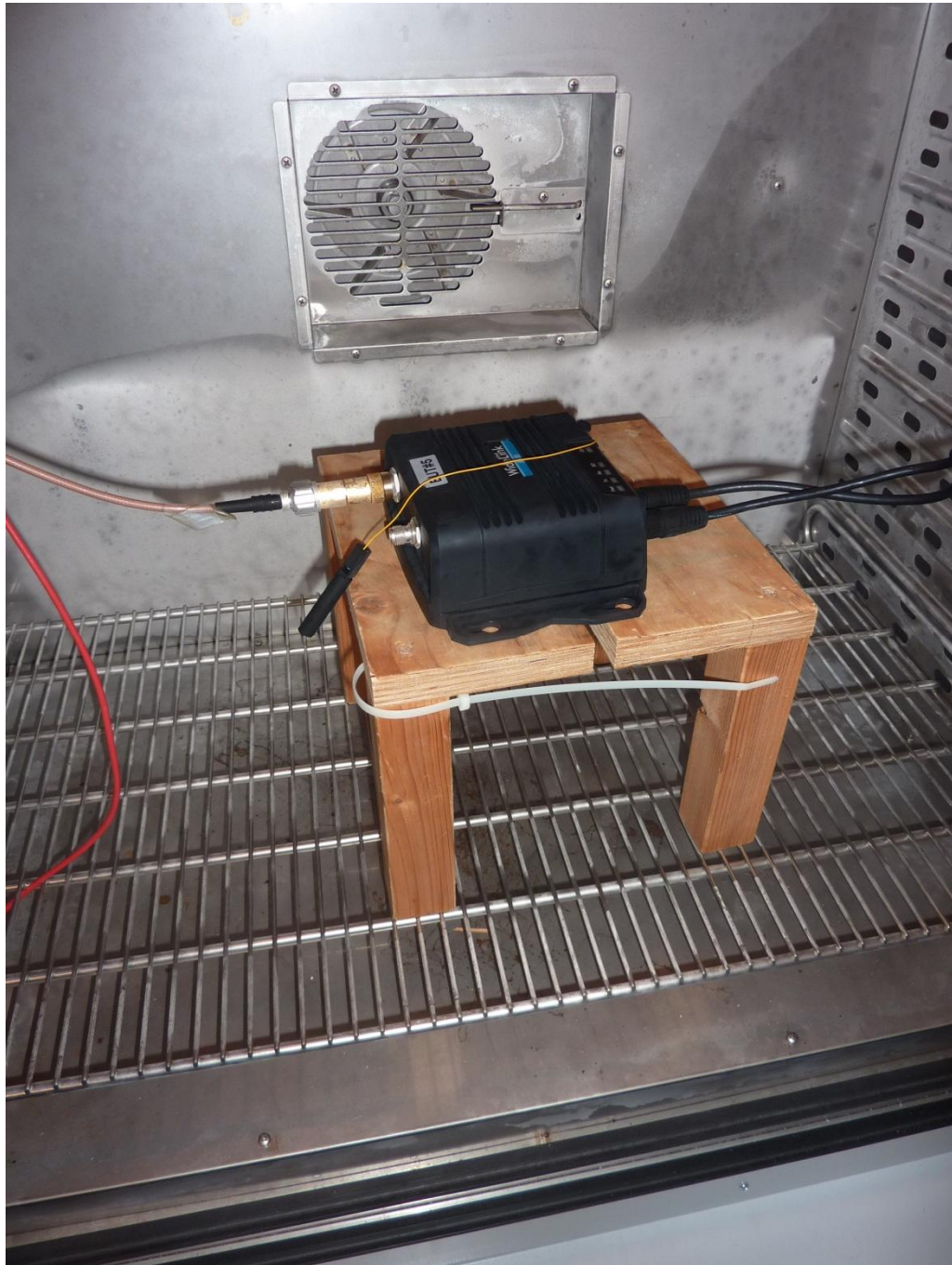


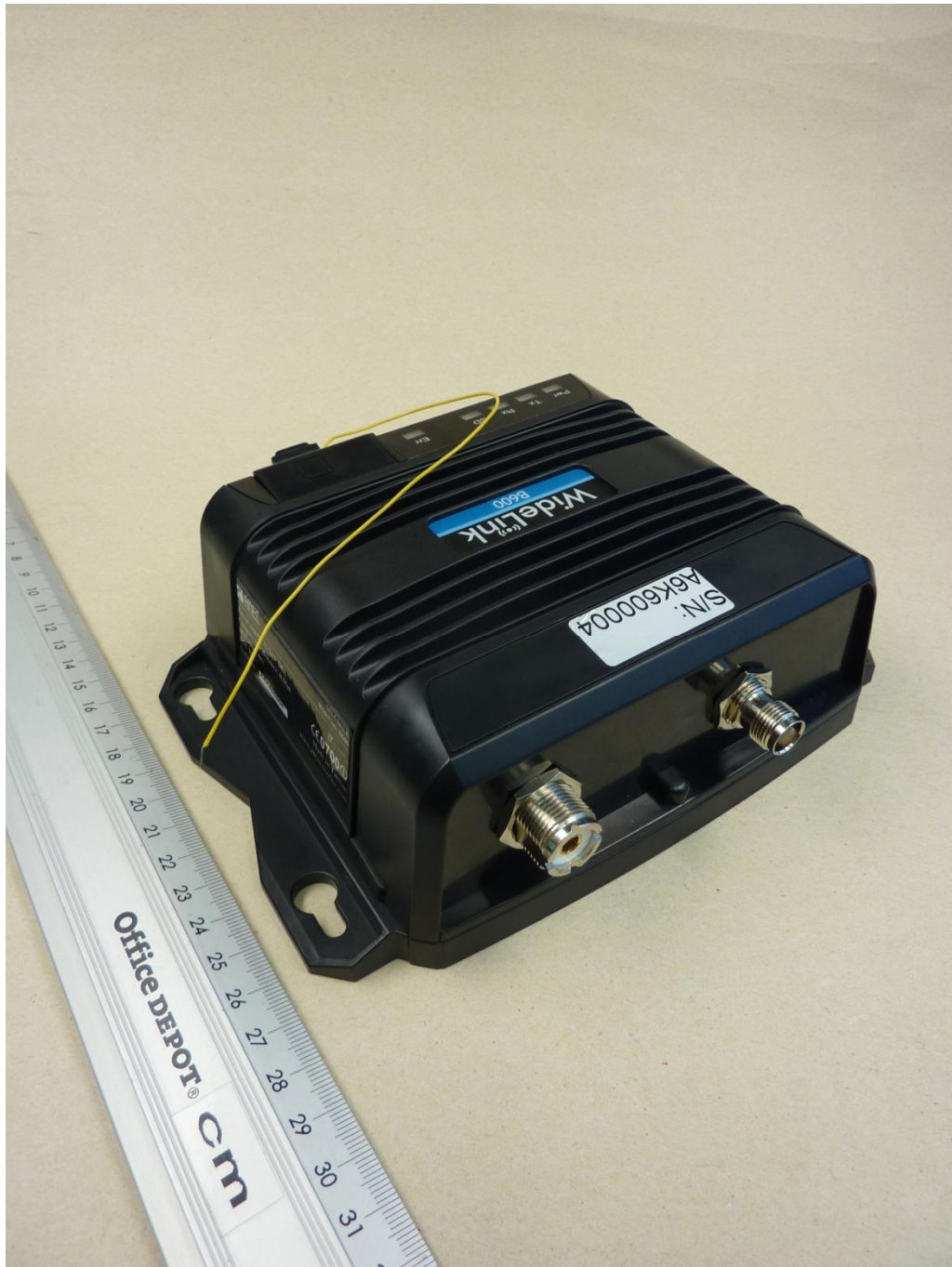
## Annex A Photographs

Remark: The yellow wire visible on the photographs below is the trigger output, which will be used for several transmitter test cases. It will be not installed for mass production.



161141\_a.jpg: WideLink B600, test setup temperature chamber

**Annex A    Photographs**



161141\_1.jpg: WideLink B600, 3D-view 1

**Annex A    Photographs**



161141\_2.jpg: WideLink B600, 3D-view 2



Annex A Photographs



161141\_3.jpg: WideLink B600, connector view 1

**Annex A    Photographs**



161141\_4.jpg: WideLink B600, connector view 2

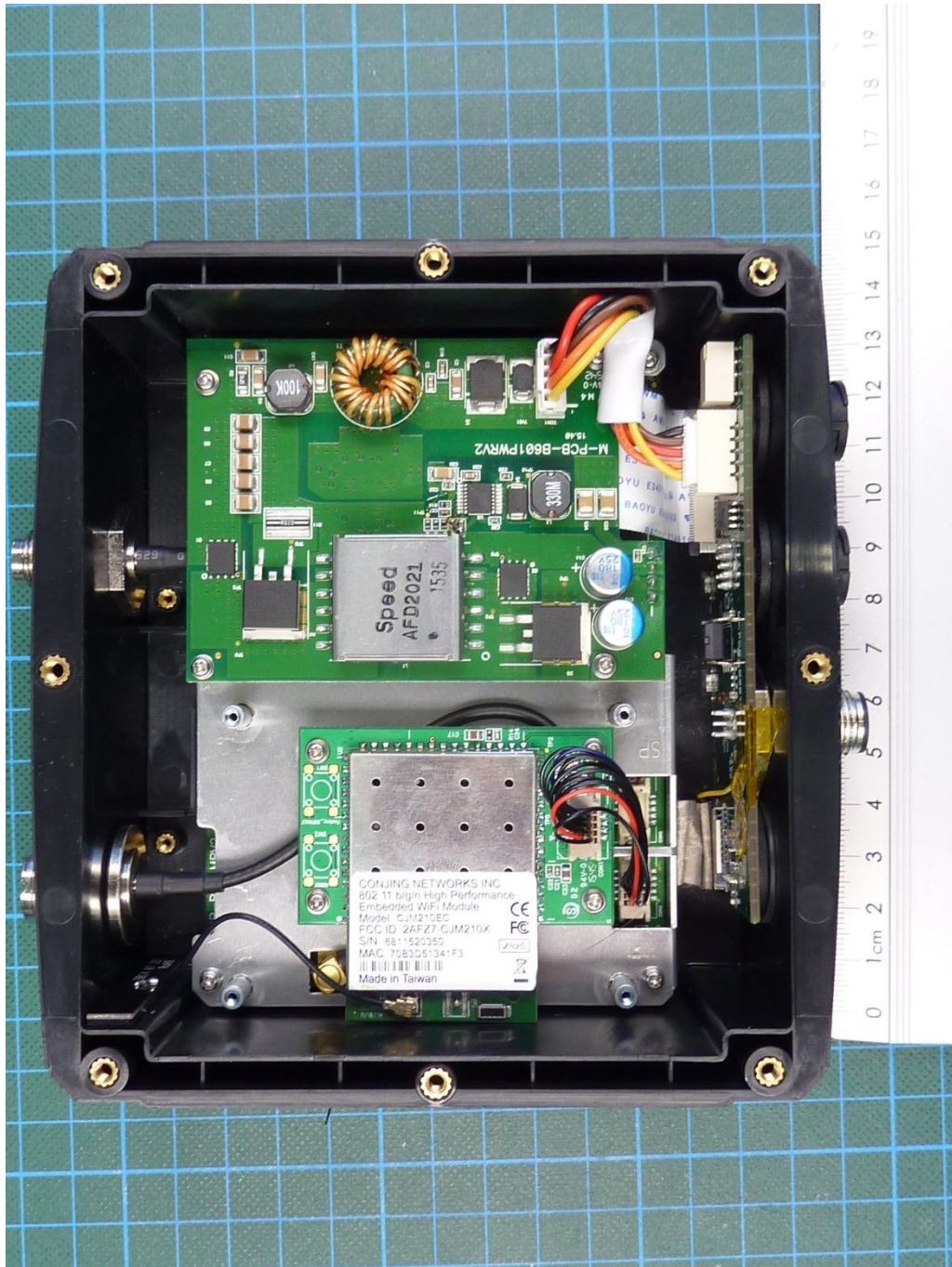
Annex A Photographs



161141\_6.jpg: WideLink B600, type plate view

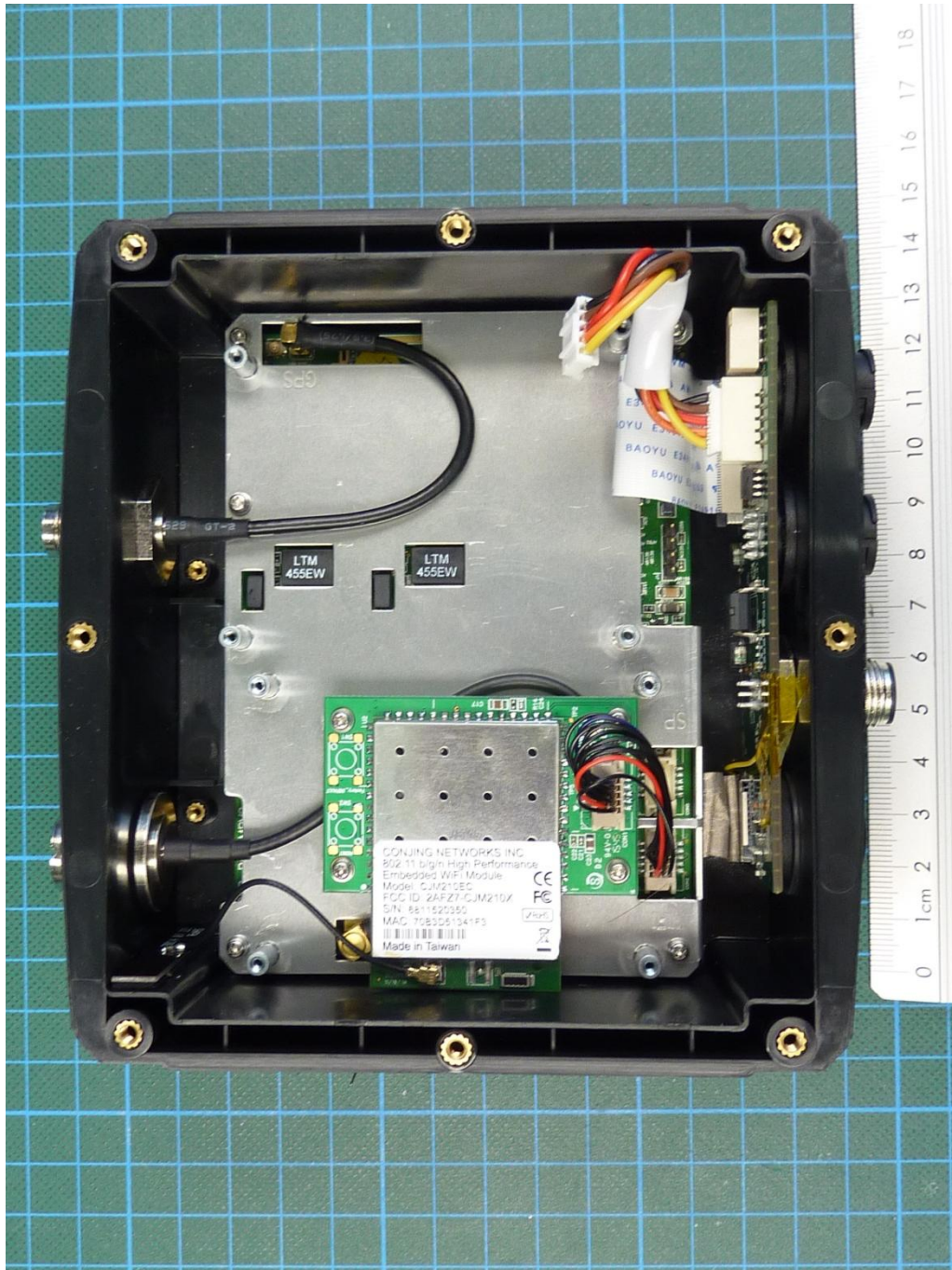


Annex A Photographs



161141\_7.jpg: WideLink B600, internal view

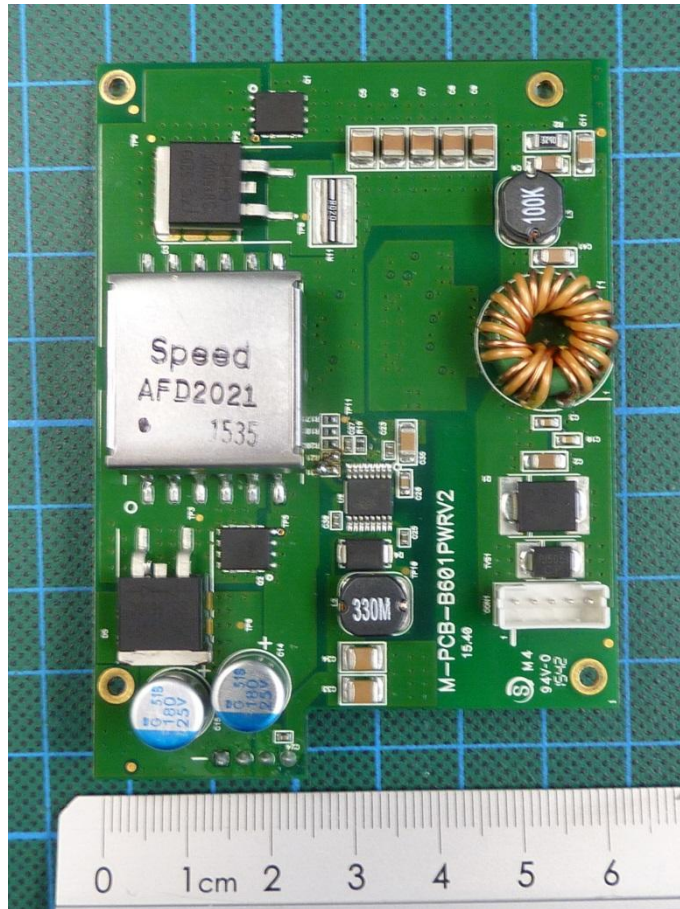
Annex A Photographs



161141\_8.jpg: WideLink B600, internal view, PCB 1 removed

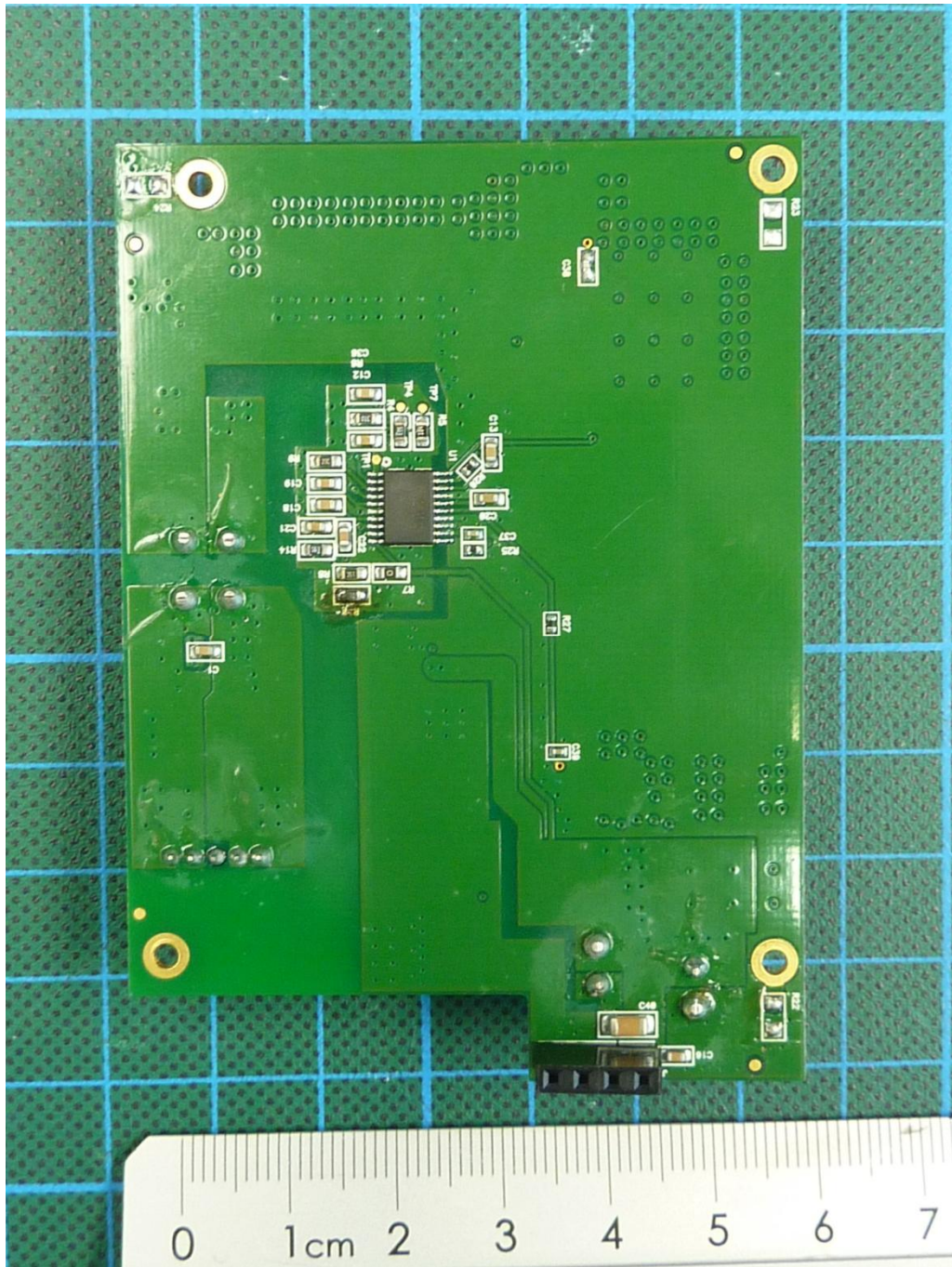


Annex A Photographs



161141\_12.jpg: WideLink B600, PCB 1, top view

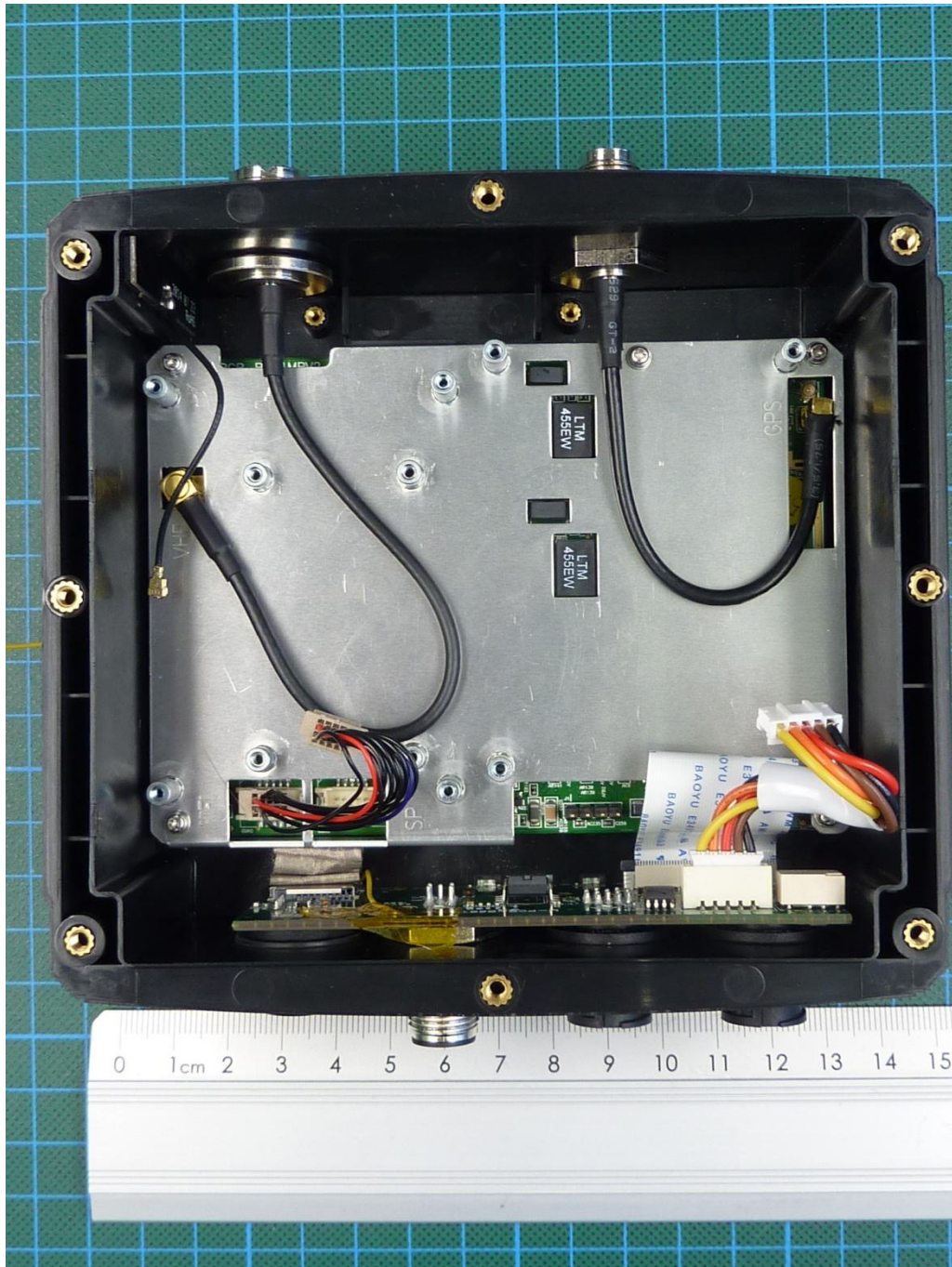
Annex A Photographs



161141\_13.jpg: WideLink B600, PCB 1, bottom view

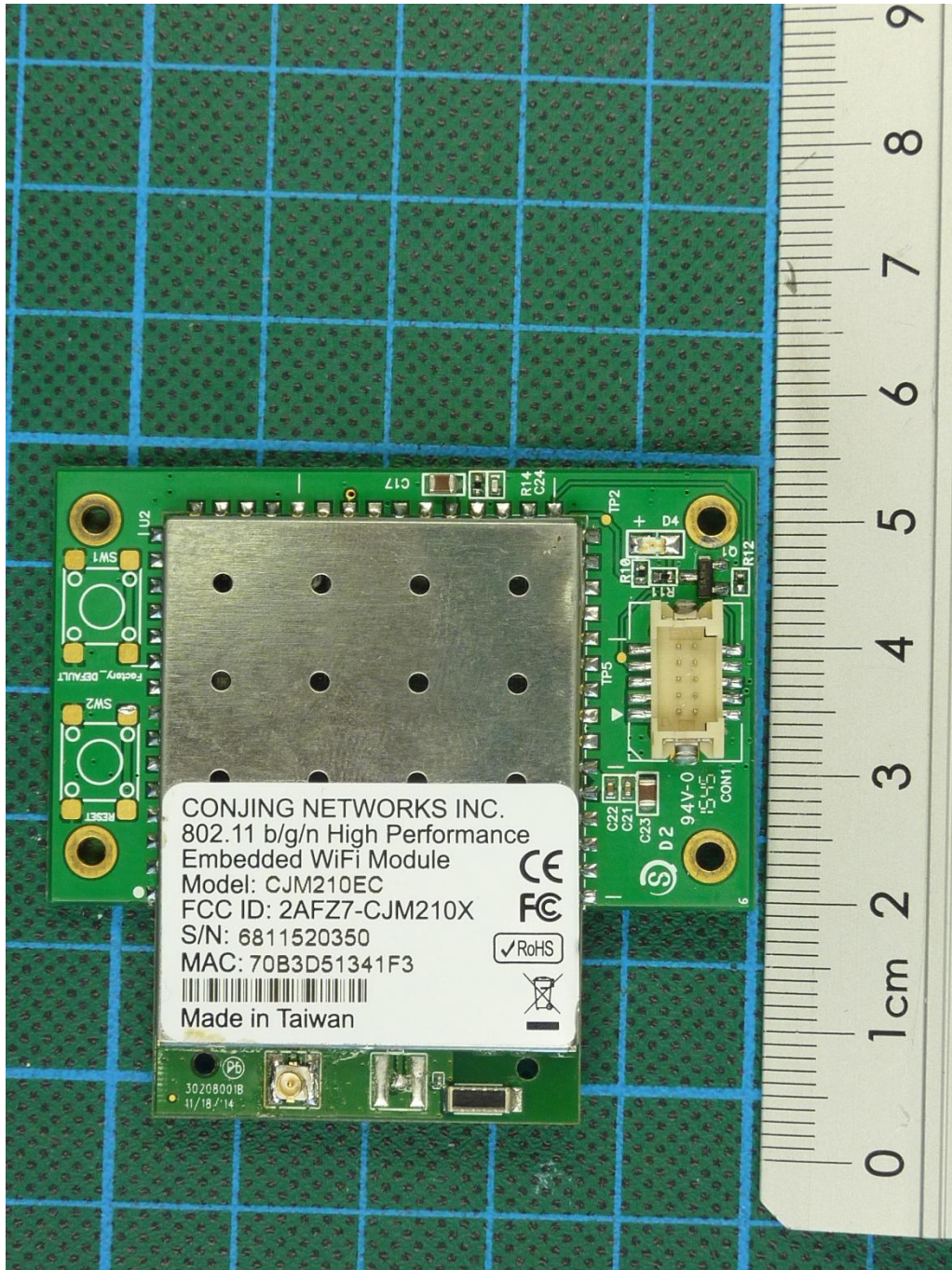


Annex A Photographs



161141\_9.jpg: WideLink B600, internal view, PCB 2 removed

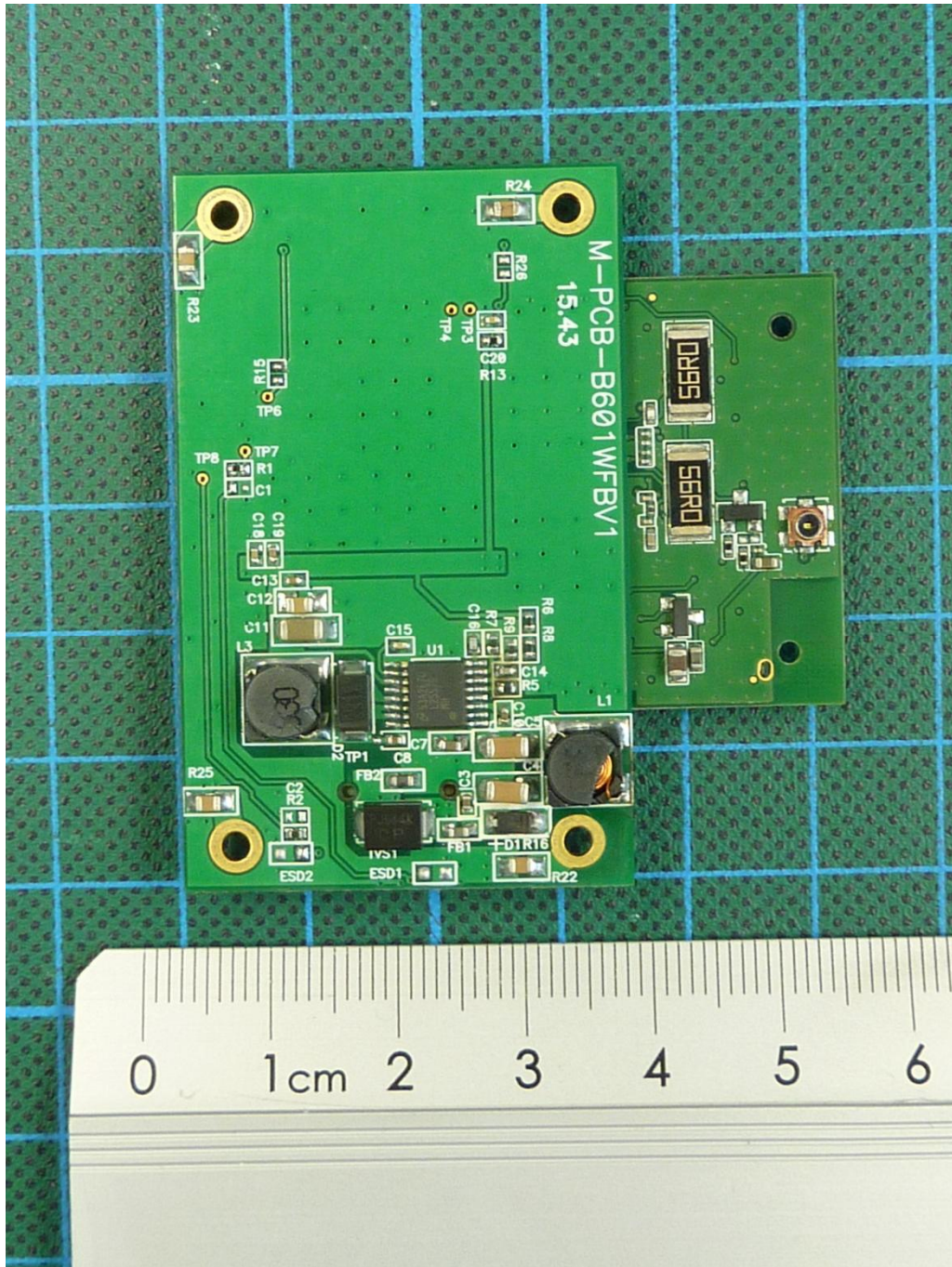
Annex A Photographs



161141\_14.jpg: WideLink B600, PCB 2, top view

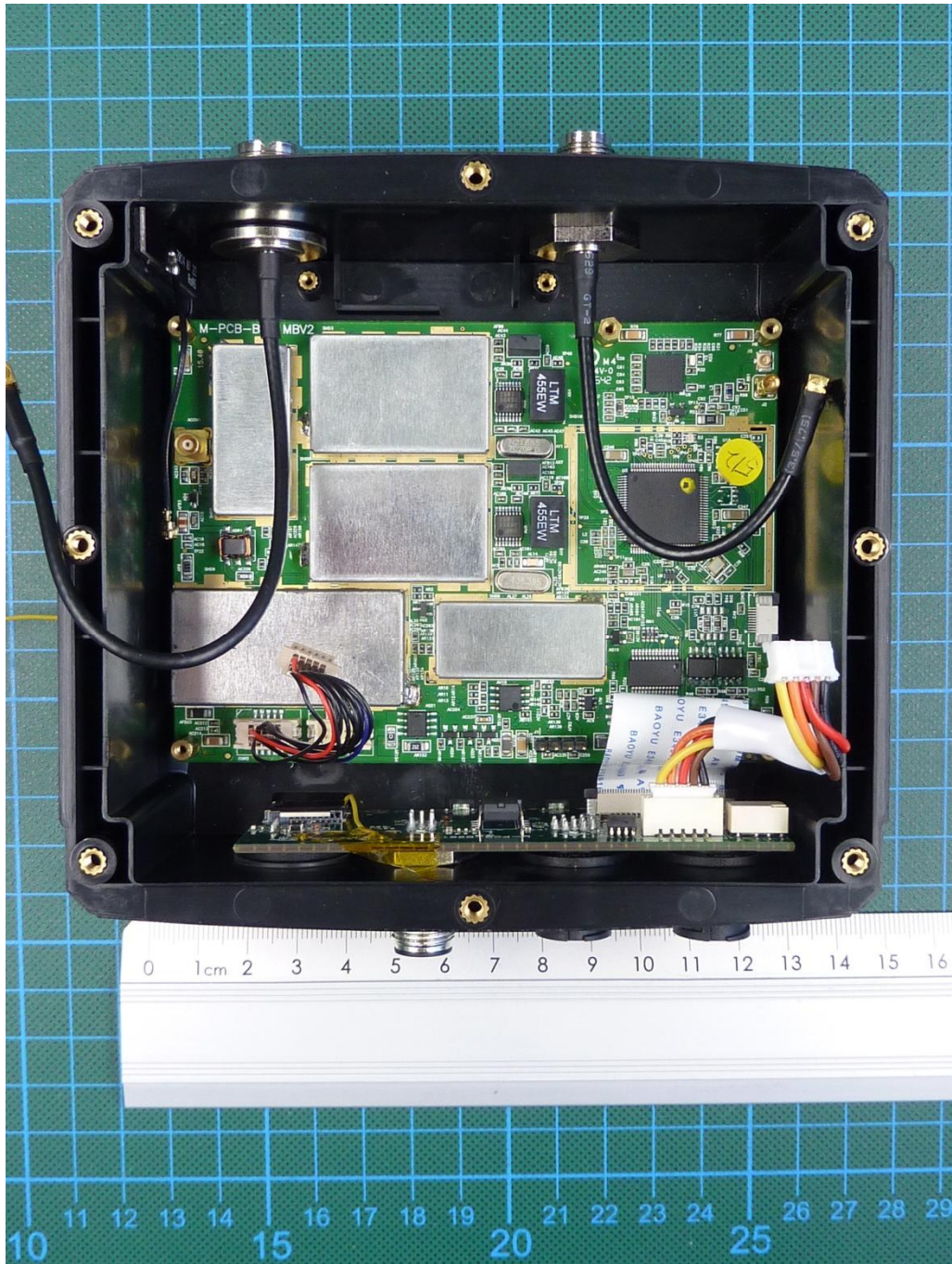


Annex A Photographs



161141\_15.jpg: WideLink B600, PCB 1, bottom view

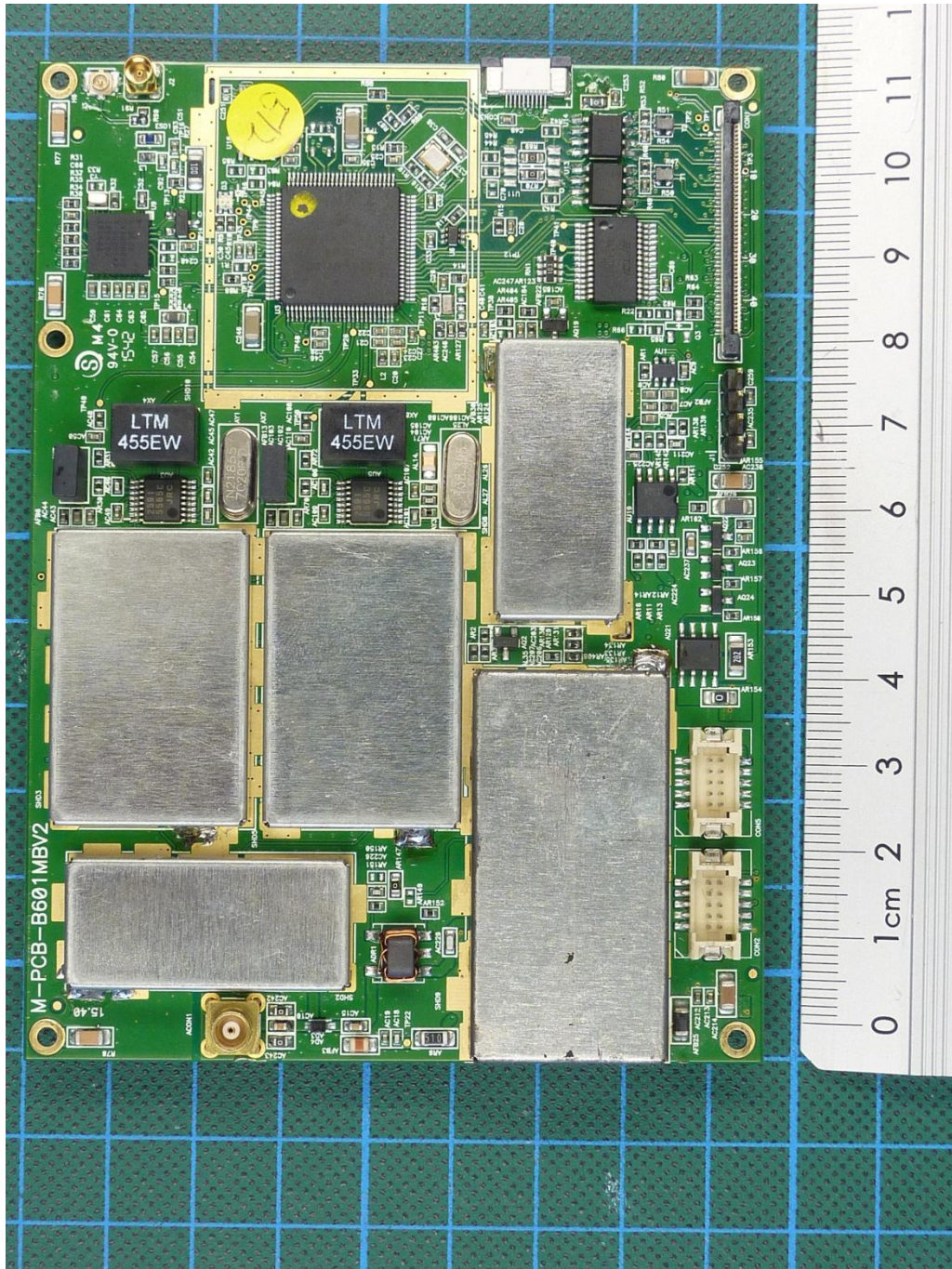
Annex A Photographs



161141\_11.jpg: WideLink B600, internal view, shielding removed



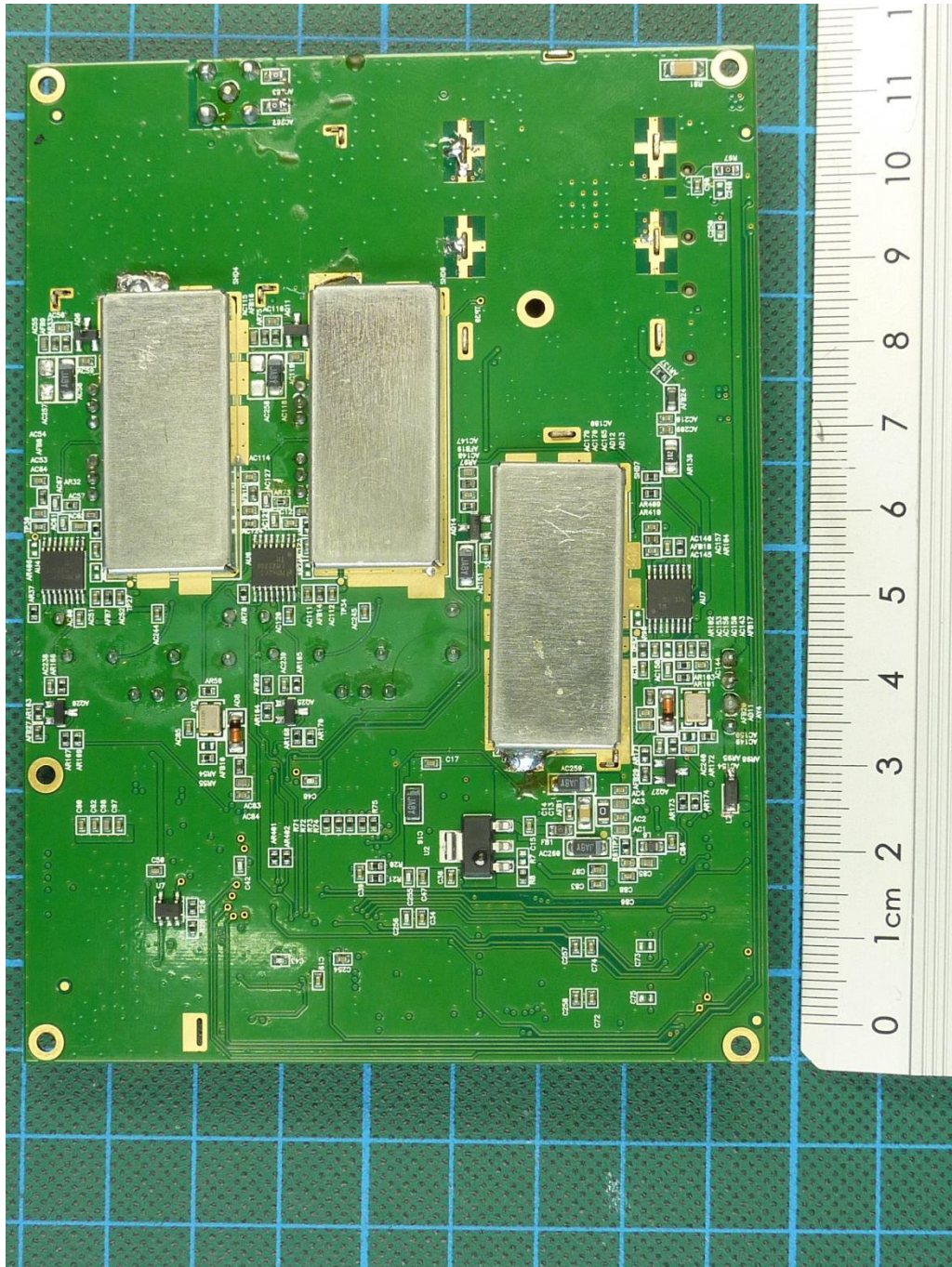
Annex A Photographs



161141\_16.jpg: WideLink B600, PCB 3, top view



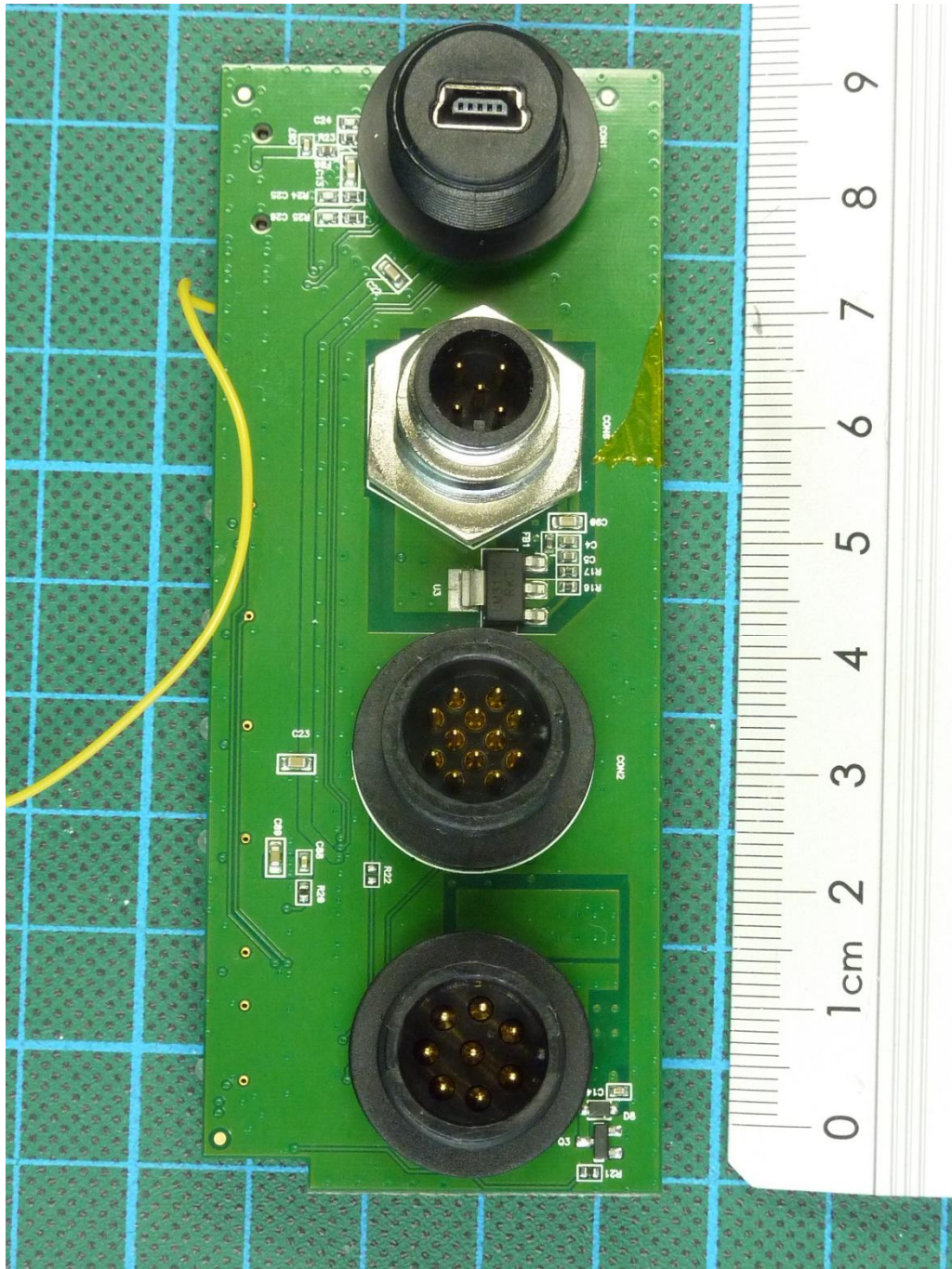
Annex A Photographs



161141\_17.jpg: WideLink B600, PCB 3, bottom view

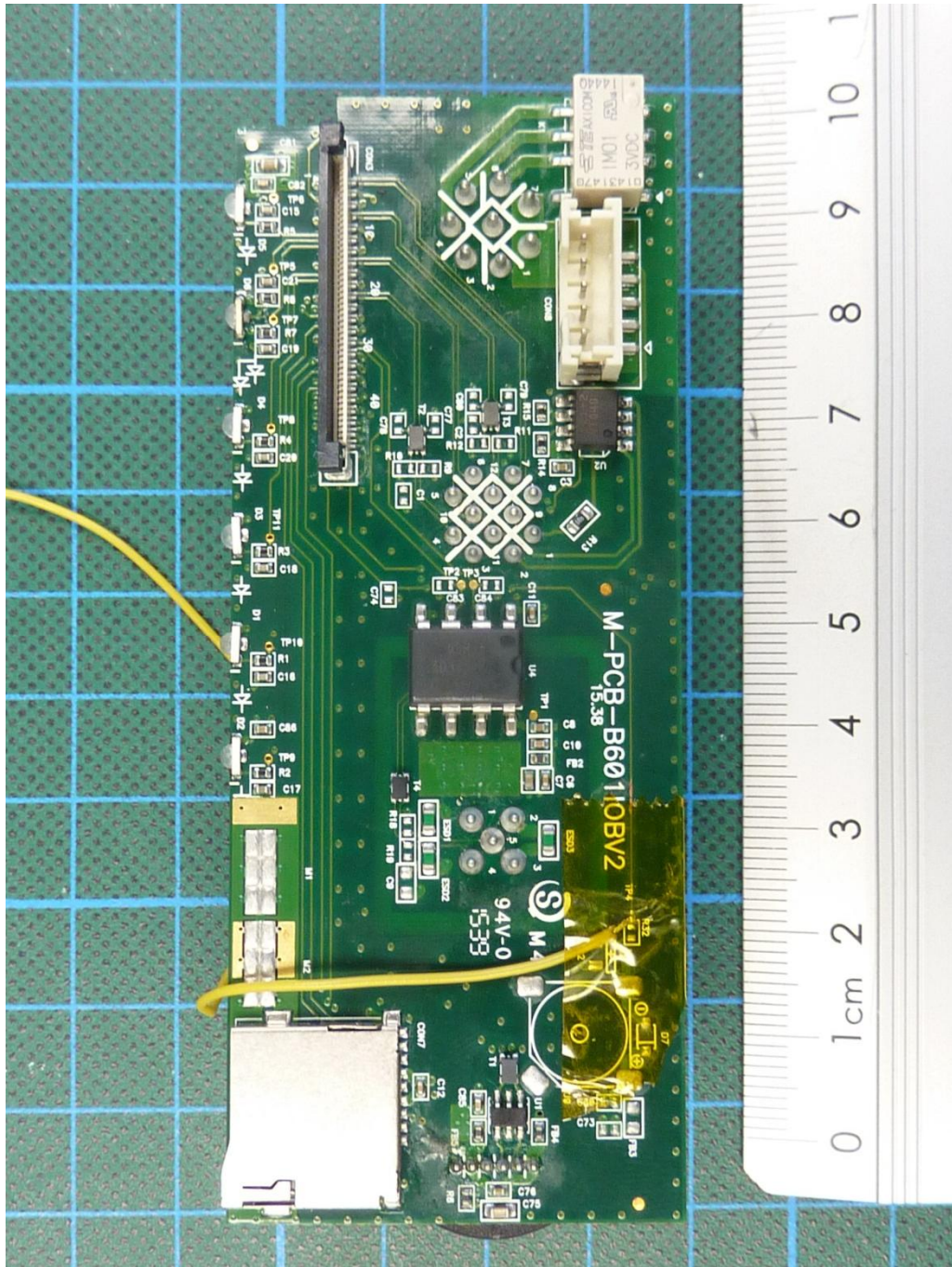


Annex A Photographs



161141\_18.jpg: WideLink B600, PCB 3, top view

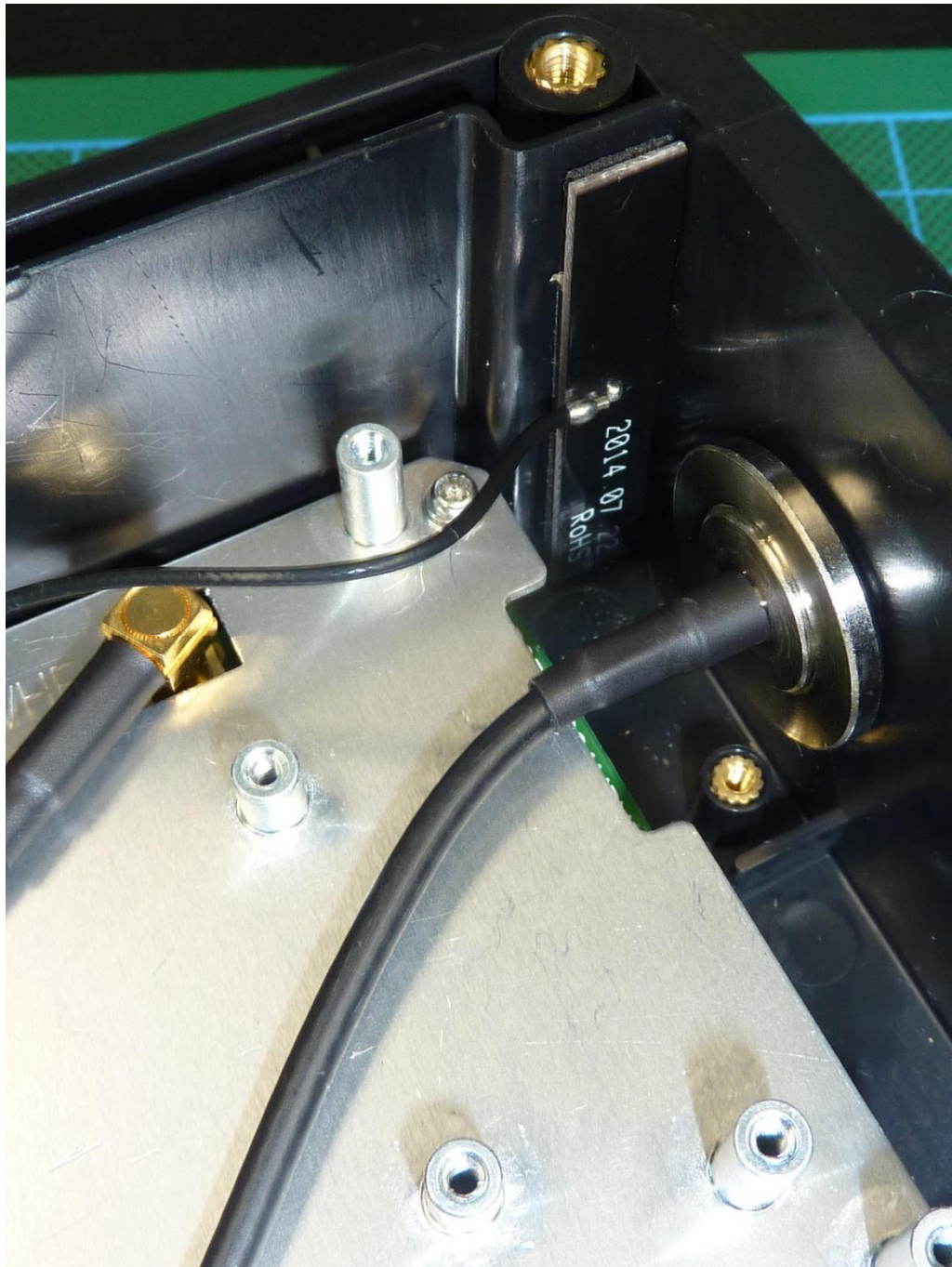
Annex A Photographs



161141\_19.jpg: WideLink B600, PCB 3, bottom view



Annex A Photographs



161141\_10.jpg: WideLink B600, detail view to WIFI antenna