



Hearing Aid Compatibility (HAC) RF Emissions Test Report

APPLICANT : Sonim Technologies, Inc.
EQUIPMENT : LTE Phone
BRAND NAME : Sonim
MODEL NAME : XP5800(PC2111)
FCC ID : WYPPC2100
STANDARD : FCC 47 CFR §20.19
ANSI C63.19-2011

We, Sporton International (Kunshan) Inc., would like to declare that the tested sample has been evaluated in accordance with the procedures and had been in compliance with the applicable technical standards.

The test results in this report apply exclusively to the tested model / sample. Without written approval of Sporton International (Kunshan) Inc., the test report shall not be reproduced except in full.

Approved by: Mark Qu / Manager



Sporton International (Kunshan) Inc.

No.3-2 Ping-Xiang Rd, Kunshan Development Zone Kunshan City Jiangsu Province 215335 China



Table of Contents

1. Attestation of Test Results.....	4
2. Administration Data.....	4
3. Equipment Under Test Information	5
3.1 General Information.....	5
3.2 Air Interface and Operating Mode.....	6
3.3 Applied Standards	7
4. HAC RF Emission.....	8
5. Measurement System Specification	9
5.1 Test Arch Phantom	9
5.2 E-Field Probe System.....	10
5.3 System Hardware	10
5.4 Data Storage and Evaluation.....	11
5.5 Test Equipment List	12
6. Measurement System Validation	13
6.1 Purpose of System Performance Check.....	13
6.2 System Setup	13
6.3 Verification Results	14
7. RF Emissions Test Procedure.....	15
8. Modulation Interference Factor.....	19
9. Low-power Exemption.....	21
10. Conducted RF Output Power (Unit: dBm).....	23
11. HAC RF Emission Test Results.....	25
12. Uncertainty Assessment	26
13. References.....	28

Appendix A. Plots of System Performance Check

Appendix B. Plots of RF Emission Measurement

Appendix C. DASYS Calibration Certificate

Appendix D. Test Setup Photos



1. Attestation of Test Results

Applicant Name	Sonim Technologies, Inc.
Equipment Name	LTE Phone
Brand Name	Sonim
Model Name	XP5800(PC2111)
FCC ID	WYPPC2100
IMEI Code	SIM1: 001080001911412 SIM2: 001080001911420
HW Version	A
SW Version	5SA.0.0-00-7.1.2-00.25.01
EUT Stage	Identical Prototype
HAC Rating	M3
Date Tested	2017/11/3~2017/11/25
Test Result	Pass

This device is compliance with HAC limits specified in guidelines FCC 47 CFR §20.19 and ANSI Standard ANSI C63.19.

2. Administration Data

Testing Site	
Test Site	Sporton International (Kunshan) Inc.
Test Site Location	No.3-2 Ping-Xiang Rd, Kunshan Development Zone Kunshan City Jiangsu Province 215335 China TEL : +86-512-57900158 FAX : +86-512-57900958
Test Site No.	Sporton Site No. : SAR01-KS
Applicant	
Company Name	Sonim Technologies, Inc.
Address	1825 S. Grant St., Suite 200., San Mateo, CA, 94402
Manufacturer	
Company Name	Sonim Technologies (Shenzhen) Limited
Address	2nd Floor, No. 2 Building Phase B, Daqian Industrial park, Longchang Road, 67 District, Baoan, Shenzhen, P. R. China



3. Equipment Under Test Information

3.1 General Information

Product Feature & Specification	
Wireless Technology and Frequency Range	GSM850: 824.2 MHz ~ 848.8 MHz GSM1900: 1850.2 MHz ~ 1909.8 MHz WCDMA Band II: 1852.4 MHz ~ 1907.6 MHz WCDMA Band IV: 1712.4 MHz ~ 1752.6 MHz WCDMA Band V: 826.4 MHz ~ 846.6 MHz CDMA2000 BC0: 824.7 MHz ~ 848.31 MHz CDMA 2000 BC1: 1851.25 MHz ~ 1908.75 MHz CDMA 2000 BC10: 817.9 MHz ~ 823.1 MHz LTE Band 2: 1850.7 MHz ~ 1909.3 MHz LTE Band 4: 1710.7 MHz ~ 1754.3 MHz LTE Band 5: 824.7 MHz ~ 848.3 MHz LTE Band 7: 2502.5 MHz ~ 2567.5 MHz LTE Band 12: 699.7 MHz ~ 715.3 MHz LTE Band 13: 779.5 MHz ~ 784.5 MHz LTE Band 14: 790.5 MHz ~ 795.5 MHz LTE Band 25: 1850.7 MHz ~ 1914.3 MHz LTE Band 26: 814.7 MHz ~ 848.3 MHz LTE Band 30 : 2307.5 MHz ~ 2312.5 MHz LTE Band 38: 2572.5 MHz ~ 2617.5 MHz LTE Band 41: 2498.5 MHz ~ 2687.5 MHz LTE Band 66: 1710.7 MHz ~ 1779.3 MHz WLAN 2.4GHz Band: 2412 MHz ~ 2462 MHz WLAN 5.2GHz Band: 5180 MHz ~ 5240 MHz WLAN 5.3GHz Band: 5260 MHz ~ 5320 MHz WLAN 5.5GHz Band: 5500 MHz ~ 5720 MHz WLAN 5.8GHz Band: 5745 MHz ~ 5825 MHz Bluetooth: 2402 MHz ~ 2480 MHz
Mode	GSM/GPRS/EGPRS RMC/AMR 12.2Kbps HSDPA HSUPA DC-HSDPA HSPA+ (16QAM uplink is not supported) CDMA2000: 1xRTT/1xEv-Do(Rev.0)/1xEv-Do(Rev.A) LTE: QPSK, 16QAM WLAN 2.4GHz 802.11b/g/n HT20/HT40 WLAN 5GHz 802.11a/n HT20/HT40 Bluetooth v3.0+EDR, Bluetooth v4.0 LE, Bluetooth v4.2 LE
Remark:	
<ol style="list-style-type: none"> This device supports VoIP in GPRS, EGPRS, CDMA, WCDMA and LTE (e.g. for 3rd-party VoIP), LTE supports VoLTE operation. This device WLAN 2.4GHz supports hotspot operation and Bluetooth support tethering applications. This device 2.4GHz WLAN/5.2GHz WLAN/5.8GHz WLAN support hotspot operation, and 5.2GHz WLAN/5.8GHz WLAN supports WiFi Direct (GC/GO), and 5.3GHz / 5.5GHz supports WiFi Direct (GC only). This device does not support DTM operation and supports GRPS/EGPRS mode up to multi-slot class 12. The device has two SIM slots and supports dual SIM dual standby. The WWAN radio transmission will be enabled by either one SIM at a time (single active). After pre-scan two SIM cards power, we found test result of the SIM1 was the worse, so we chose SIM1 slot to perform all tests. For WWAN transmitter Hotspot exposure condition: When hotspot mode is enabled, power reduction will be activated to limit the maximum power of WCDMA B2 / B4, CDMA2000 BC1 and LTE B2 / B4 / B25 / B66. For WLAN transmitter Head exposure conditions: While the device is in talking mode and receiver worked, then power reduction will be implemented immediately at WLAN5.5GHz and WLAN5.8GHz. 	



3.2 Air Interface and Operating Mode

Air Interface	Band MHz	Type	C63.19 Tested	Simultaneous Transmitter	OTT	Power Reduction
GSM	850	VO	Yes	WLAN, BT	NA	No
	1900			WLAN, BT	NA	No
	GPRS/EDGE	DT	No	WLAN, BT	Yes	No
WCDMA	Band V	VO	No ⁽¹⁾	WLAN, BT	NA	No
	Band IV			WLAN, BT	NA	Yes
	Band II			WLAN, BT	NA	Yes
	HSPA	DT	No	WLAN, BT	Yes	Yes
CDMA	BC0	VO	Yes	WLAN, BT	NA	No
	BC1			WLAN, BT	NA	Yes
	BC10			WLAN, BT	NA	No
	EVDO	DT	No	WLAN, BT	Yes	Yes
LTE-FDD	Band 2	VD	No ⁽¹⁾	WLAN, BT	Yes	Yes
	Band 4			WLAN, BT		Yes
	Band 5			WLAN, BT		No
	Band 7			WLAN, BT		No
	Band 12			WLAN, BT		No
	Band 13			WLAN, BT		No
	Band 14			WLAN, BT		No
	Band 25			WLAN, BT		Yes
	Band 26			WLAN, BT		No
	Band 30			WLAN, BT		No
	Band 66			WLAN, BT		Yes
LTE-TDD	Band 38	VD	Yes	WLAN, BT		No
	Band 41			WLAN, BT		No
WLAN	2.4GHz	VD	No ^(2,3)	GSM,CDMA,WCDMA,LTE	Yes	No
	5.2GHz			GSM,CDMA,WCDMA,LTE		No
	5.3GHz			GSM,CDMA,WCDMA,LTE		No
	5.5GHz			GSM,CDMA,WCDMA,LTE		Yes
	5.8GHz			GSM,CDMA,WCDMA,LTE		Yes
BT	2.4GHz	DT	No	GSM,CDMA,WCDMA,LTE	NA	No

VO=CMRS Voice Service
 DT=Digital Transport
 VD=CMRS IP Voice Service and Digital Transport

Remark:

- WCDMA and LTE is exempted from testing by low power exemption that its average antenna input power plus its MIF is ≤ 17 dBm, and is rated as M4.
- For 2.4GHz WLAN RF emissions testing exemption shall be applied to an RF air interface technology in a device whose Peak antenna input power, averaged over intervals ≤ 50 μ s, is ≤ 23 dBm.
- No Associated T-Coil measurement has been made in accordance with KDB 285076 D02 T-Coil testing for CMRS IP.



3.3 Applied Standards

- FCC CFR47 Part 20.19
- ANSI C63.19 2011-version
- FCC KDB 285076 D01 HAC Guidance v04r01
- FCC KDB 285076 D02 T Coil testing for CMRS IP v02



4. HAC RF Emission

FCC wireless hearing aid compatibility rules ensure that consumers with hearing loss are able to access wireless communications services through a wide selection of handsets without experiencing disabling radio frequency (RF) interference or other technical obstacles.

To define and measure the hearing aid compatibility of handsets, in CFR47 part 20.19 ANSI C63.19 is referenced. A handset is considered hearing aid-compatible for acoustic coupling if it meets a rating of at least M3 under ANSI C63.19, and A handset is considered hearing aid compatible for inductive coupling if it meets a rating of at least T3.

According to ANSI C63.19 2011 version, for acoustic coupling, the RF electric field emissions of wireless communication devices should be measured and rated according to the emission level as below.

Emission Categories	E-field emissions	
	<960Mhz	>960Mhz
M1	50 to 55 dB (V/m)	40 to 45 dB (V/m)
M2	45 to 50 dB (V/m)	35 to 40 dB (V/m)
M3	40 to 45 dB (V/m)	30 to 35 dB (V/m)
M4	<40 dB (V/m)	<30 dB (V/m)

Table 4.1 Telephone near-field categories in linear units

5. Measurement System Specification

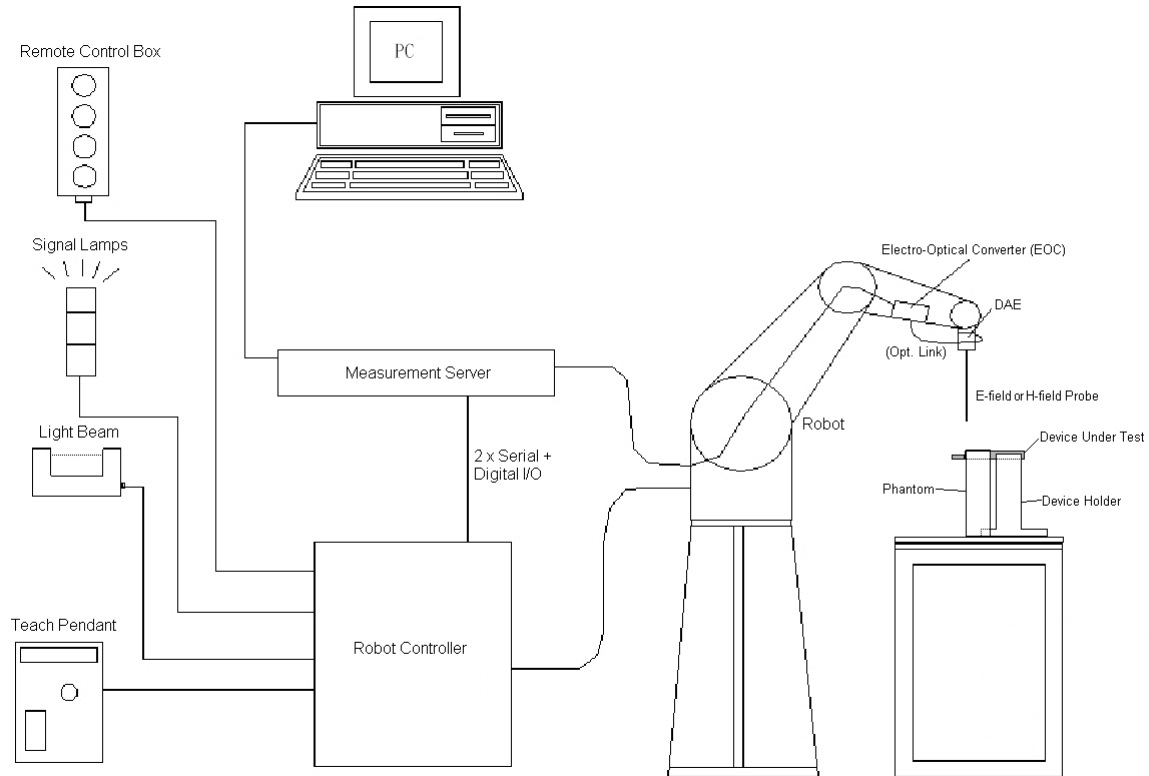
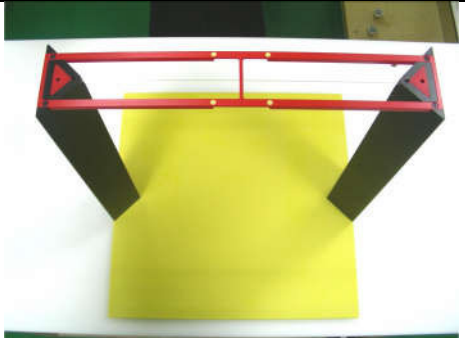


Fig 5.1 SPEAG DASY5 System Configurations

5.1 Test Arch Phantom

<p>Construction :</p>	<p>Enables easy and well defined positioning of the phone and validation dipoles as well as simple teaching of the robot.</p>	 <p>Fig 5.2 Photo of Arch Phantom</p>
<p>Dimensions :</p>	<p>370x 370 x 370 mm</p>	

5.2 E-Field Probe System

**E-Field Probe Specification
<ER3DV6>**

Construction	One dipole parallel, two dipoles normal to probe axis Built-in shielding against static charges
Calibration	In air from 100 MHz to 3.0 GHz (absolute accuracy $\pm 6.0\%$, $k=2$)
Frequency	100 MHz to 6 GHz; Linearity: ± 2.0 dB (100 MHz to 3 GHz)
Directivity	± 0.2 dB in air (rotation around probe axis) ± 0.4 dB in air (rotation normal to probe axis)
Dynamic Range	2 V/m to 1000 V/m (M3 or better device readings fall well below diode compression point)
Linearity	± 0.2 dB
Dimensions	Overall length: 330 mm (Tip: 16 mm) Tip diameter: 8 mm (Body: 12 mm) Distance from probe tip to dipole centers: 2.5 mm



Fig 5.3 Photo of E-field Probe

Probe Tip Description:

HAC field measurements take place in the close near field with high gradients. Increasing the measuring distance from the source will generally decrease the measured field values (in case of the validation dipole approx. 10%/per mm).

5.3 System Hardware

DAE

The data acquisition electronics (DAE) consists of a highly sensitive electrometer-grade preamplifier with auto-zeroing, a channel and gain-switching multiplexer, a fast 16 bit AD-converter and a command decoder and control logic unit.

Robot

The SPEAG DASY system uses the high precision robots (DASY5: TX90XL) type from Stäubli SA (France). For the 6-axis controller system, the robot controller version (DASY5: CS8c) from Stäubli is used.

5.4 Data Storage and Evaluation

The DASY software stores the assessed data from the data acquisition electronics as raw data (in microvolt readings from the probe sensors), together with all the necessary software parameters for the data evaluation (probe calibration data, and device frequency and modulation data) in measurement files.

Probe parameters :	- Sensitivity	Norm _i , a _{i0} , a _{i1} , a _{i2}
	- Conversion factor	ConvF _i
	- Diode compression point	dcp _i
Device parameters :	- Frequency	f
	- Crest factor	cf
	- Conductivity	σ
Media parameters :	- Density	ρ

The formula for each channel can be given as :

$$V_i = U_i + U_i^2 \cdot \frac{cf}{dcp_i}$$

- with
- V_i = compensated signal of channel i, (i = x, y, z)
 - U_i = input signal of channel i, (i = x, y, z)
 - cf = crest factor of exciting field (DASY parameter)
 - dcp_i = diode compression point (DASY parameter)

From the compensated input signals, the primary field data for each channel can be evaluated :

$$\text{E-field Probes : } E_i = \sqrt{\frac{V_i}{\text{Norm}_i \cdot \text{ConvF}}}$$

- with
- V_i = compensated signal of channel i, (i = x, y, z)
 - Norm_i = sensor sensitivity of channel i, (i = x, y, z), μV/(V/m)² for E-field Probes
 - ConvF = sensitivity enhancement in solution
 - f = carrier frequency [GHz]
 - E_i = electric field strength of channel i in V/m

The RSS value of the field components gives the total field strength (Hermitian magnitude) :

$$E_{\text{tot}} = \sqrt{E_x^2 + E_y^2 + E_z^2}$$

The primary field data are used to calculate the derived field units.



5.5 Test Equipment List

Manufacturer	Name of Equipment	Type/Model	Serial Number	Calibration	
				Last Cal.	Due Date
SPEAG	Dipole	CD835V3	1171	2017/3/20	2018/3/19
SPEAG	Dipole	CD1880V3	1155	2017/3/20	2018/3/19
SPEAG	Dipole	CD2600V3	1010	2017/11/22	2018/11/21
SPEAG	Data Acquisition Electronics	DAE4	1326	2017/9/15	2018/9/14
SPEAG	Probe	ER3DV6	2476	2016/11/23	2017/11/22
SPEAG	Probe	ER3DV6	2476	2017/1/25	2018/1/24
SPEAG	Test Arch Phantom	Par phantom	1105	NCR	NCR
SPEAG	Phone Positioner	N/A	N/A	NCR	NCR
Agilent	Wireless Communication Test Set	E5515C	MY48367160	2017/1/19	2018/1/18
R&S	Universal Radio Communication Tester	CMW500	143030	2017/8/17	2018/8/16
AR	Amplifier	551G4	333096	NCR	NCR
Anritsu	Power Sensor	MA2411B	1644003	2016/12/23	2017/12/22
Anritsu	Power Meter	ML2495A	1531197	2016/12/23	2017/12/22
ARRA	Power Divider	A3200-2	N/A	NA	NA
MCL	Attenuation	BW-S10W5	N/A	NA	NA

Table 5.1 Test Equipment List

Note: NCR: "No-Calibration Required".

6. Measurement System Validation

Each DASY system is equipped with one or more system validation kits. These units, together with the predefined measurement procedures within the DASY software, enable the user to conduct the system performance check and system validation. System validation kit includes a dipole, tripod holder to fix it underneath the test Arch and a corresponding distance holder.

6.1 Purpose of System Performance Check

The system performance check verifies that the system operates within its specifications. System and operator errors can be detected and corrected. It is recommended that the system performance check be performed prior to any usage of the system in order to guarantee reproducible results. The system performance check uses normal HAC measurements in a simplified setup with a well characterized source. This setup was selected to give a high sensitivity to all parameters that might fail or vary over time. The system check does not intend to replace the calibration of the components, but indicates situations where the system uncertainty is exceeded due to drift or failure.

6.2 System Setup

1. In the simplified setup for system evaluation, the EUT is replaced by a calibrated dipole and the power source is replaced by a continuous wave which comes from a signal generator.
2. The center point of the probe element(s) is 15mm from the closest surface of the dipole elements.
3. The calibrated dipole must be placed beneath the arch phantom. The equipment setup is shown below:

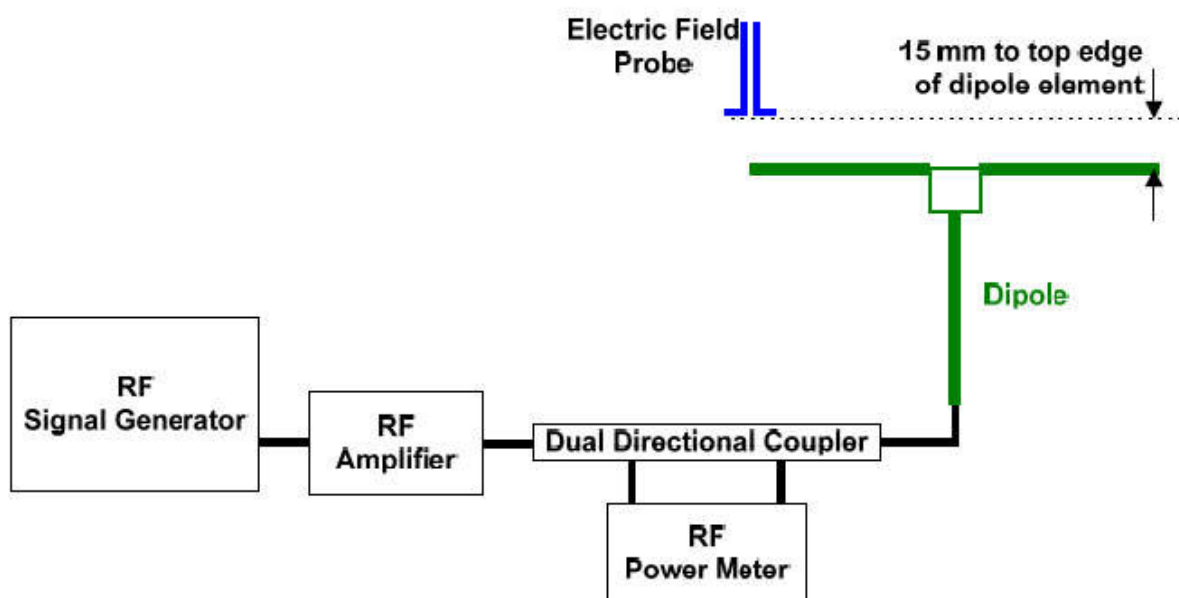


Fig. 6.1 System Validation Setup

The output power on dipole port must be calibrated to 20dBm (100mW) before dipole is connected.

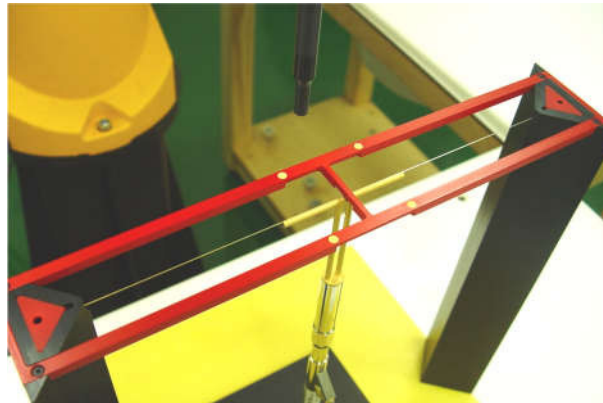


Fig 7.2 Dipole Setup

6.3 Verification Results

Comparing to the original E-field value provided by SPEAG, the verification data should be within its specification of 25 %. Table 6.1 shows the target value and measured value. The table below indicates the system performance check can meet the variation criterion and the plots can be referred to appendix A of this report.

Frequency (MHz)	Input Power (dBm)	Target Value (V/m)	E-Field above high end (V/m)	E-Field above low end (V/m)	Average Value (V/m)	Deviation (%)	Date
835	20	105.8	107.8	98.36	103.08	-2.57	2017/11/3
1880	20	90.7	87.66	81.13	84.395	-6.95	2017/11/3
2600	20	85.4	92.54	85.17	88.855	4.05	2017/11/25

Table 6.1 Test Results of System Validation

Note: Deviation = ((Average E-field Value) - (Target value)) / (Target value) * 100%



7. RF Emissions Test Procedure

Referenced from ANSI C63.19 -2011 section 5.5.1

- a) Confirm the proper operation of the field probe, probe measurement system, and other instrumentation and the positioning system.
- b) Position the WD in its intended test position.
- c) Set the WD to transmit a fixed and repeatable combination of signal power and modulation characteristic that is representative of the worst case (highest interference potential) encountered in normal use. Transiently occurring start-up, changeover, or termination conditions, or other operations likely to occur less than 1% of the time during normal operation, may be excluded from consideration.
- d) The center sub-grid shall be centered on the T-Coil mode perpendicular measurement point or the acoustic output, as appropriate. Locate the field probe at the initial test position in the 50 mm by 50 mm grid, which is contained in the measurement plane, refer to illustrated in Figure 8.2. If the field alignment method is used, align the probe for maximum field reception.
- e) Record the reading at the output of the measurement system.
- f) Scan the entire 50 mm by 50 mm region in equality spaced increments and record the reading at each measurement point, The distance between measurement points shall be sufficient to assure the identification of the maximum reading.
- g) Identify the five contiguous sub-grids around the center sub-grid whose maximum reading is the lowest of all available choices. This eliminates the three sub-grids with the maximum readings. Thus, the six areas to be used to determine the WD's highest emissions are identified.
- h) Identify the maximum reading within the non-excluded sub-grids identified in step g).
- i) *Indirect measurement method*
The RF audio interference level in dB (V/m) is obtained by adding the MIF (in dB) to the maximum steady-state rms field-strength reading, in dB (V/m)
- j) Compare this RF audio interference level with the categories in ANSI C63.19-2011 clause 8 and record the resulting WD category rating.
- k) For the T-Coil mode M-rating assessment, determine whether the chosen perpendicular measurement point is contained in an included sub-grid of the first scan. If so, then a second scan is not necessary. The first scan and resultant category rating may be used for the T-Coil mode M rating.

Otherwise, repeat step a) through step i), with the grid shifted so that it is centered on the perpendicular measurement point. Record the WD category rating.



Referenced from ANSI C63.19 -2011 section 5.5.1

- a) Confirm the proper operation of the field probe, probe measurement system, and other instrumentation and the positioning system.
- b) Position the WD in its intended test position.
- c) Set the WD to transmit a fixed and repeatable combination of signal power and modulation characteristic that is representative of the worst case (highest interference potential) encountered in normal use. Transiently occurring start-up, changeover, or termination conditions, or other operations likely to occur less than 1% of the time during normal operation, may be excluded from consideration.
- d) The center sub-grid shall be centered on the T-Coil mode perpendicular measurement point or the acoustic output, as appropriate. Locate the field probe at the initial test position in the 50 mm by 50 mm grid, which is contained in the measurement plane, refer to illustrated in Figure 8.2. If the field alignment method is used, align the probe for maximum field reception.
- e) Record the reading at the output of the measurement system.
- f) Scan the entire 50 mm by 50 mm region in equality spaced increments and record the reading at each measurement point, The distance between measurement points shall be sufficient to assure the identification of the maximum reading.
- g) Identify the five contiguous sub-grids around the center sub-grid whose maximum reading is the lowest of all available choices. This eliminates the three sub-grids with the maximum readings. Thus, the six areas to be used to determine the WD's highest emissions are identified.
- h) Identify the maximum reading within the non-excluded sub-grids identified in step g).
- i) *Indirect measurement method*
The RF audio interference level in dB (V/m) is obtained by adding the MIF (in dB) to the maximum steady-state rms field-strength reading, in dB (V/m)
- j) Compare this RF audio interference level with the categories in ANSI C63.19-2011 clause 8 and record the resulting WD category rating.
- k) For the T-Coil perpendicular measurement location is ≥ 5.0 mm from the center of the acoustic output, then two different 50 mm by 50 mm areas may need to be scanned, the first for the microphone mode assessment and the second for the T-Coil assessment.
- l) The second for the T-Coil assessment, with the grid shifted so that it is centered on the perpendicular measurement point. Record the WD category rating.

Test Instructions

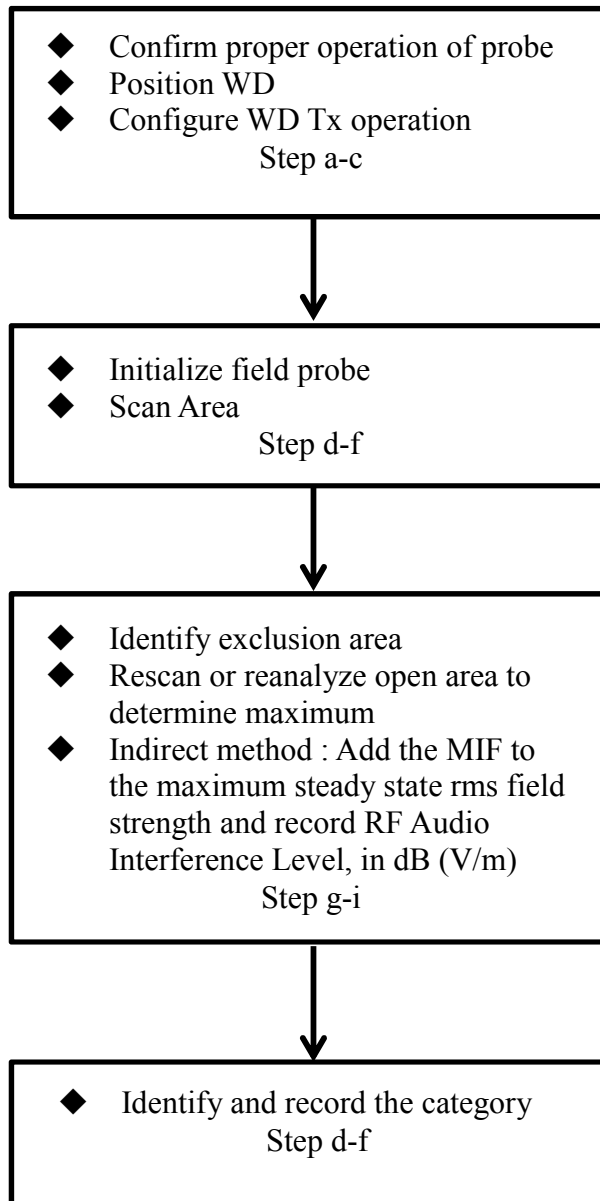


Fig 8.1 Flow Chart of HAC RF Emission



Fig 8.2 EUT reference and plane for HAC RF emission measurements

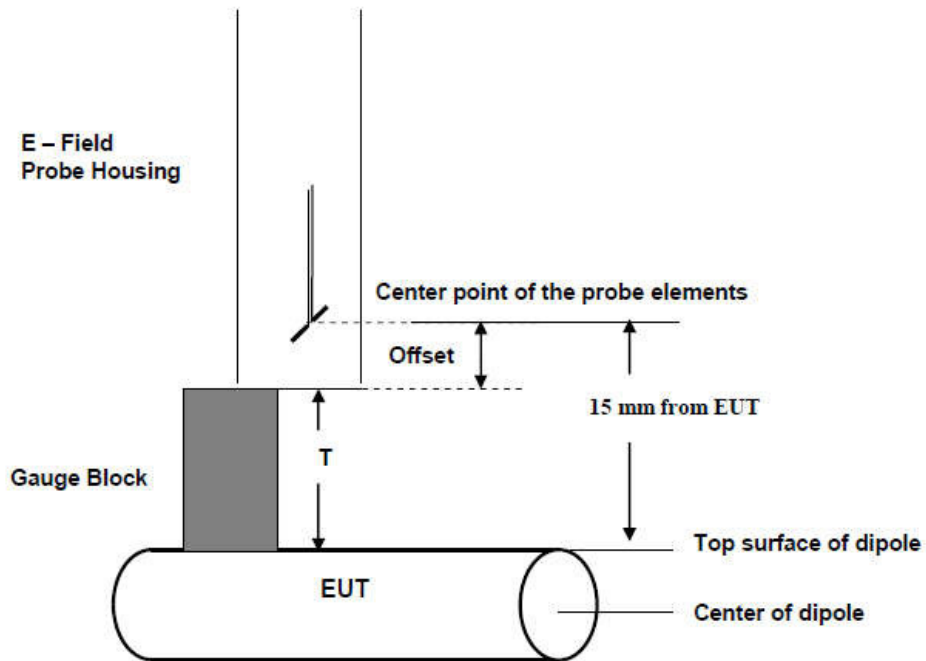


Fig. 8.3 Gauge block with E-field probe



8. Modulation Interference Factor

The HAC Standard ANSI C63.19-2011 defines a new scaling using the Modulation Interference Factor (MIF).

For any specific fixed and repeatable modulated signal, a modulation interference factor (MIF, expressed in dB) may be developed that relates its interference potential to its steady-state rms signal level or average power level. This factor is a function only of the audio-frequency amplitude modulation characteristics of the signal and is the same for field-strength and conducted power measurements. It is important to emphasize that the MIF is valid only for a specific repeatable audio-frequency amplitude modulation characteristic. Any change in modulation characteristic requires determination and application of a new MIF

The Modulation Interference factor (MIF, in dB) is added to the measured average E-field (in dBV/m) and converts it to the RF Audio Interference level (in dBV/m). This level considers the audible amplitude modulation components in the RF E-field. CW fields without amplitude modulation are assumed to not interfere with the hearing aid electronics. Modulations without time slots and low fluctuations at low frequencies have low MIF values, TDMA modulations with narrow transmission and repetition rates of few 100 Hz have high MIF values and give similar classifications as ANSI C63.19-2011.

ER3D, EF3D and EU2D E-field probes have a bandwidth <10 kHz and can therefore not evaluate the RF envelope in the full audio band. DASY52 is therefore using the indirect measurement method according to ANSI C63.19-2011 which is the primary method. These near field probes read the averaged E-field measurement. Especially for the new high peak-to-average (PAR) signal types, the probes shall be linearized by PMR calibration in order to not overestimate the field reading. Probe Modulation Response (PMR) calibration linearizes the probe response over its dynamic range for specific modulations which are characterized by their UID and result in an uncertainty specified in the probe calibration certificate. The MIF is characteristic for a given waveform envelope and can be used as a constant conversion factor if the probe has been PMR calibrated.

The evaluation method for the MIF is defined in ANSI C63.19-2011 section D.7. An RMS demodulated RF signal is fed to a spectral filter (similar to an A weighting filter) and forwarded to a temporal filter acting as a quasi-peak detector. The averaged output of these filtering is scaled to a 1 kHz 80% AM signal as reference. MIF measurement requires additional instrumentation and is not well suited for evaluation by the end user with reasonable uncertainty. It may alternatively be determined through analysis and simulation, because it is constant and characteristic for a communication signal. DASY52 uses well-defined signals for PMR calibration. The MIF of these signals has been determined by simulation and it is automatically applied.



MIF values applied in this test report were provided by the HAC equipment provider, SPEAG, and the values are listed below

UID	Communication System Name	MIF(dB)
10021	GSM-FDD(TDMA,GMSK)	3.63
10011	UMTS-FDD(WCDMA)	-27.23
10039	CDMA2000 (1xRTT, RC1)	-19.77
10081	CDMA2000 (1xRTT, RC3)	-19.71
10295	CDMA2000 (1xRTT, RC1 SO3, 1/8th Rate 25 fr.)	3.26
10100	LTE-FDD(SC-FDMA, 100%RB, 20MHz, QPSK)	-23.48
10101	LTE-FDD(SC-FDMA, 100%RB, 20MHz, 16-QAM)	-17.86
10108	LTE-FDD(SC-FDMA, 100%RB, 10MHz, QPSK)	-21.57
10109	LTE-FDD(SC-FDMA, 100%RB, 10MHz, 16-QAM)	-16.87
10110	LTE-FDD(SC-FDMA, 100%RB, 5MHz, QPSK)	-23.39
10111	LTE-FDD(SC-FDMA, 100%RB, 5MHz, 16-QAM)	-16.35
10139	LTE-FDD(SC-FDMA, 100%RB, 15MHz, QPSK)	-18.25
10140	LTE-FDD(SC-FDMA, 100%RB, 15MHz, 16-QAM)	-19.37
10142	LTE-FDD(SC-FDMA, 100%RB, 3MHz, QPSK)	-22.36
10143	LTE-FDD(SC-FDMA, 100%RB, 3MHz, 16-QAM)	-14.75
10145	LTE-FDD(SC-FDMA, 100%RB, 1.4MHz, QPSK)	-17.39
10146	LTE-FDD(SC-FDMA, 100%RB, 1.4MHz, 16-QAM)	-13.6
10148	LTE-FDD(SC-FDMA, 50%RB, 20MHz, QPSK)	-18.28
10149	LTE-FDD(SC-FDMA, 50%RB, 20MHz, 16-QAM)	-16.87
10154	LTE-FDD(SC-FDMA, 50%RB, 10MHz, QPSK)	-23.42
10155	LTE-FDD(SC-FDMA, 50%RB, 10MHz, 16-QAM)	-16.36
10156	LTE-FDD(SC-FDMA, 50%RB, 5MHz, QPSK)	-21.71
10157	LTE-FDD(SC-FDMA, 50%RB, 5MHz, 16-QAM)	-15.78
10160	LTE-FDD(SC-FDMA, 50%RB, 15MHz, QPSK)	-17.95
10161	LTE-FDD(SC-FDMA, 50%RB, 15MHz, 16-QAM)	-17.54
10163	LTE-FDD(SC-FDMA, 50%RB, 3MHz, QPSK)	-19.99
10164	LTE-FDD(SC-FDMA, 50%RB, 3MHz, 16-QAM)	-14.41
10166	LTE-FDD(SC-FDMA, 50%RB, 1.4MHz, QPSK)	-18.1
10167	LTE-FDD(SC-FDMA, 50%RB, 1.4MHz, 16-QAM)	-12.15
10169	LTE-FDD(SC-FDMA, 1RB, 20MHz, QPSK)	-15.63
10170	LTE-FDD(SC-FDMA, 1RB, 20MHz, 16-QAM)	-9.76
10175	LTE-FDD(SC-FDMA, 1RB, 10MHz, QPSK)	-15.63
10176	LTE-FDD(SC-FDMA, 1RB, 10MHz, 16-QAM)	-9.76
10177	LTE-FDD(SC-FDMA, 1RB, 5MHz, QPSK)	-15.63
10178	LTE-FDD(SC-FDMA, 1RB, 5MHz, 16-QAM)	-9.76
10181	LTE-FDD(SC-FDMA, 1RB, 15MHz, QPSK)	-15.63
10182	LTE-FDD(SC-FDMA, 1RB, 15MHz, 16-QAM)	-9.76
10184	LTE-FDD(SC-FDMA, 1RB, 3MHz, QPSK)	-15.62
10185	LTE-FDD(SC-FDMA, 1RB, 3MHz, 16-QAM)	-9.76
10187	LTE-FDD(SC-FDMA, 1RB, 1.4MHz, QPSK)	-15.62
10188	LTE-FDD(SC-FDMA, 1RB, 1.4MHz, 16-QAM)	-9.76

The MIF measurement uncertainty is estimated as follows, declared by HAC equipment provider SPEAG, for modulation frequencies from slotted waveforms with fundamental frequency and at least 2 harmonics within 10 kHz:

- i) 0.2 dB for MIF: -7 to +5 dB,
- ii) 0.5 dB for MIF: -13 to +11 dB
- iii) 1 dB for MIF: > -20 dB



9. Low-power Exemption

<Max Tune-up Limit>

Mode		Average Power (dBm)		
		Full Power	Reduced Power for Hotspot On	Reduced Power for Receiver On
GSM	GSM850	32.50		
	GSM1900	30.50		
WCDMA	Band V	23.00		
	Band IV	23.50	20.50	
	Band II	23.50	21.00	
CDMA	BC 0	24.00		
	BC 1	24.50	21.50	
	BC 10	24.50		
LTE	Band 2	24.00	21.00	
	Band 4	24.00	20.50	
	Band 5	23.00		
	Band 7	24.00		
	Band 12	24.00		
	Band 13	24.00		
	Band 14	24.00		
	Band 25	24.00	21.00	
	Band 26	23.00		
	Band 30	23.00		
	Band 38	24.00		
	Band 41	24.00		
Band 66	24.00	20.50		
2.4GHz WLAN		19.00		
5.2GHz WLAN		17.50		
5.3GHz WLAN		17.50		
5.5GHz WLAN		17.00		15.00
5.8GHz WLAN		17.00		14.50



<Low Power Exemption>

Air Interface	Max Average Antenna Input Power (dBm)	Worst Case MIF (dB)	Power + MIF(dB)	C63.19 test required
GSM850	32.50	3.63	36.13	Yes
GSM1900	30.50	3.63	34.13	Yes
WCDMA Band V	23.00	-27.23	-4.23	No
WCDMA Band IV	23.50	-27.23	-3.73	No
WCDMA Band II	23.50	-27.23	-3.73	No
CDMA2000 BC0 (1/8th Frame Rate)	24.00	3.26	27.26	Yes
CDMA2000 BC0 (Full Frame Rate)	24.00	-19.71	4.29	No
CDMA2000 BC1 (1/8th Frame Rate)	24.50	3.26	27.76	Yes
CDMA2000 BC1 (Full Frame Rate)	24.50	-19.71	4.79	No
CDMA2000 BC10 (1/8th Frame Rate)	24.50	3.26	27.76	Yes
CDMA2000 BC10 (Full Frame Rate)	24.50	-19.71	4.79	No
LTE - FDD	24.00	-9.76	14.24	No
LTE-TDD	24.00	-1.44	22.56	Yes
2.4GHz WLAN	19.00			No
5GHz WLAN	17.50			No

General Note:

1. According to ANSI C63.19 2011-version, for WWAN RF air interface technology of a device is exempt from testing when its average antenna input power plus its MIF is ≤ 17 dBm for any of its operating modes.
2. For LTE operation the worst case MIF plus the worst case average antenna input power for all modes are investigated to determine the testing requirements for this device.
3. Chose WWAN full power to do HAC exemption analysis representatively reduced power.
4. According to ANSI C63.19 2011, for WLAN RF emissions testing exemption shall be applied to an RF air interface technology in a device whose Peak antenna input power, averaged over intervals $\leq 50 \mu s$, is ≤ 23 dBm.
5. Chose the maximum power of all bands to calculate low power exemption.
6. HAC RF rating is M4 for the air interface which meets the low power exemption.



10. Conducted RF Output Power (Unit: dBm)

<Full Power Mode>

Average Antenna Input Power(dBm)						
Air Interface	GSM850			GSM1900		
Channel	128	189	251	512	661	810
Frequency (MHz)	824.2	836.4	848.8	1850.2	1880.0	1909.8
GSM (GMSK, 1 Tx slot)	32.06	31.85	32.06	29.62	29.69	29.68

Average Antenna Input Power(dBm)									
Band	CDMA2000 BC0			CDMA2000 BC1			CDMA2000 BC10		
TX Channel	1013	384	777	25	600	1175	476	580	684
Frequency (MHz)	824.7	836.52	848.31	1851.25	1880	1908.75	817.9	820.5	823.1
1xRTT RC1 SO3_1/8th Rate	23.56	23.65	23.71	24.05	24.26	24.16	24.13	24.21	24.15
1xRTT RC3 SO3_Full Rate	23.53	23.62	23.68	24.01	24.23	24.13	24.12	24.19	24.13



<LTE Band 38>

BW [MHz]	Modulation	RB Size	RB Offset	Power Low Ch. / Freq.	Power Middle Ch. / Freq.	Power High Ch. / Freq.
Channel				37850	38000	38150
Frequency (MHz)				2580	2595	2610
20	QPSK	1	0	23.09	22.87	23.02
20	QPSK	1	49	22.97	22.81	22.84
20	QPSK	1	99	23.21	23.52	23.14
20	QPSK	50	0	22.09	22.10	22.07
20	QPSK	50	24	21.98	21.91	22.06
20	QPSK	50	50	22.07	21.99	22.06
20	QPSK	100	0	21.88	21.95	21.90
20	16QAM	1	0	22.07	22.15	22.07
20	16QAM	1	49	22.37	22.07	21.96
20	16QAM	1	99	22.36	22.10	22.25
20	16QAM	50	0	20.95	20.95	21.02
20	16QAM	50	24	21.18	20.99	20.75
20	16QAM	50	50	21.00	21.08	21.13
20	16QAM	100	0	21.06	20.96	20.93

<LTE Band 41>

BW [MHz]	Modulation	RB Size	RB Offset	Power Low Ch. / Freq.	Power Low Middle Ch. / Freq.	Power Middle Ch. / Freq.	Power High Middle Ch. / Freq.	Power High Ch. / Freq.
Channel				39750	40185	40620	41055	41490
Frequency (MHz)				2506	2549.5	2593	2636.5	2680
20	QPSK	1	0	22.90	23.14	23.11	23.10	23.33
20	QPSK	1	49	22.92	23.08	23.12	23.18	23.05
20	QPSK	1	99	22.95	23.33	23.35	23.62	23.46
20	QPSK	50	0	22.12	22.25	22.14	22.33	22.24
20	QPSK	50	24	22.01	22.12	22.11	22.18	22.19
20	QPSK	50	50	22.11	22.24	21.99	22.30	22.21
20	QPSK	100	0	22.07	22.12	22.24	22.30	22.28
20	16QAM	1	0	21.92	22.17	22.01	22.32	22.64
20	16QAM	1	49	21.89	22.13	22.14	22.32	22.20
20	16QAM	1	99	22.51	22.39	22.38	22.73	22.67
20	16QAM	50	0	21.02	21.29	21.22	21.31	21.35
20	16QAM	50	24	20.99	21.24	21.19	21.19	21.17
20	16QAM	50	50	21.17	21.36	21.28	21.34	21.06
20	16QAM	100	0	21.14	21.29	21.29	21.30	21.31



11. HAC RF Emission Test Results

Plot No.	Air Interface	Operating Mode	Channel	Average Antenna Input Power (dBm)	MIF	RF audio interference level dB(V/m)	M-Rating
1	GSM850	GSM Voice	128	32.06	3.63	40.38	M3
2	GSM850	GSM Voice	189	31.85	3.63	40.17	M3
3	GSM850	GSM Voice	251	32.06	3.63	40.22	M3
4	GSM1900	GSM Voice	512	29.62	3.63	28.71	M4
5	GSM1900	GSM Voice	661	29.69	3.63	28.81	M4
6	GSM1900	GSM Voice	810	29.68	3.63	28.32	M4
7	CDMA2000 BC0	1xRTT, RC1 SO3, 1/8th Rate	1013	23.56	3.26	30.81	M4
8	CDMA2000 BC0	1xRTT, RC1 SO3, 1/8th Rate	384	23.65	3.26	31.02	M4
9	CDMA2000 BC0	1xRTT, RC1 SO3, 1/8th Rate	777	23.71	3.26	31.34	M4
10	CDMA2000 BC1	1xRTT, RC1 SO3, 1/8th Rate	25	24.05	3.26	23.31	M4
11	CDMA2000 BC1	1xRTT, RC1 SO3, 1/8th Rate	600	24.26	3.26	23.89	M4
12	CDMA2000 BC1	1xRTT, RC1 SO3, 1/8th Rate	1175	24.16	3.26	23.30	M4
13	CDMA2000 BC10	1xRTT, RC1 SO3, 1/8th Rate	476	24.13	3.26	31.36	M4
14	CDMA2000 BC10	1xRTT, RC1 SO3, 1/8th Rate	580	24.21	3.26	31.40	M4
15	CDMA2000 BC10	1xRTT, RC1 SO3, 1/8th Rate	684	24.15	3.26	31.51	M4
16	TDD Band 41	20M_QPSK_1RB,99Offset_Voice	39750	22.95	-1.62	23.80	M4
17	TDD Band 41	20M_QPSK_1RB,99Offset_Voice	40185	23.33	-1.62	23.95	M4
18	TDD Band 41	20M_QPSK_1RB,99Offset_Voice	40620	23.35	-1.62	22.13	M4
19	TDD Band 41	20M_QPSK_1RB,99Offset_Voice	41055	23.62	-1.62	21.71	M4
20	TDD Band 41	20M_QPSK_1RB,99Offset_Voice	41490	23.46	-1.62	19.28	M4
21	TDD Band 41	20M_16QAM_1RB_0Offset_Voice	39750	22.51	-1.44	23.13	M4
22	TDD Band 41	20M_16QAM_1RB_0Offset_Voice	40185	22.39	-1.44	23.03	M4
23	TDD Band 41	20M_16QAM_1RB_0Offset_Voice	40620	22.38	-1.44	22.74	M4
24	TDD Band 41	20M_16QAM_1RB_0Offset_Voice	41055	22.73	-1.44	20.98	M4
25	TDD Band 41	20M_16QAM_1RB_0Offset_Voice	41490	22.67	-1.44	18.45	M4

Remark:

1. The HAC measurement system applies MIF value onto the measured RMS E-field, which is indirect method in ANSI C63.19 2011 version, and reports the RF audio interference level.
2. LTE Band 38 frequency band is covered by LTE Band 41, also the same tune up power, so chose LTE Band 41 to do HAC RF testing and can represent LTE Band 38.
3. The uncertainty is 0.2dB of MIF ranges from -7dB to +5dB. GSM850/GSM1900 with rating M4 would not be affected considering the MIF uncertainty.
4. There is special HAC mode software on this EUT.

Test Engineer : Nick Hu.



12. Uncertainty Assessment

The component of uncertainty may generally be categorized according to the methods used to evaluate them. The evaluation of uncertainty by the statistical analysis of a series of observations is termed a Type A evaluation of uncertainty. The evaluation of uncertainty by means other than the statistical analysis of a series of observation is termed a Type B evaluation of uncertainty. Each component of uncertainty, however evaluated, is represented by an estimated standard deviation, termed standard uncertainty, which is determined by the positive square root of the estimated variance.

The combined standard uncertainty of the measurement result represents the estimated standard deviation of the result. It is obtained by combining the individual standard uncertainties of both Type A and Type B evaluation using the usual “root-sum-squares” (RSS) methods of combining standard deviations by taking the positive square root of the estimated variances. Expanded uncertainty is a measure of uncertainty that defines an interval about the measurement result within which the measured value is confidently believed to lie. It is obtained by multiplying the combined standard uncertainty by a coverage factor. For purpose of this document, a coverage factor two is used, which corresponds to confidence interval of about 95 %. The DASY uncertainty Budget is showed in Table 12.1.



Error Description	Uncertainty Value (±%)	Probability Distribution	Divisor	Ci (E)	Standard Uncertainty (E)
Measurement System					
Probe Calibration	5.1	Normal	1	1	± 5.1 %
Axial Isotropy	4.7	Rectangular	√3	1	± 2.7 %
Sensor Displacement	16.5	Rectangular	√3	1	± 9.5 %
Boundary Effects	2.4	Rectangular	√3	1	± 1.4 %
Phantom Boundary Effects	7.2	Rectangular	√3	1	± 4.1 %
Linearity	4.7	Rectangular	√3	1	± 2.7 %
Scaling with PMR Calibration	10.0	Rectangular	√3	1	± 5.77 %
System Detection Limit	1.0	Rectangular	√3	1	± 0.6 %
Readout Electronics	0.3	Normal	1	1	± 0.3 %
Response Time	0.8	Rectangular	√3	1	± 0.5 %
Integration Time	2.6	Rectangular	√3	1	± 1.5 %
RF Ambient Conditions	3.0	Rectangular	√3	1	± 1.7 %
RF Reflections	12.0	Rectangular	√3	1	± 6.9 %
Probe Positioner	1.2	Rectangular	√3	1	± 0.7 %
Probe Positioning	4.7	Rectangular	√3	1	± 2.7 %
Extrap. and Interpolation	1.0	Rectangular	√3	1	± 0.6 %
Test Sample Related					
Device Positioning Vertical	4.7	Rectangular	√3	1	± 2.7 %
Device Positioning Lateral	1.0	Rectangular	√3	1	± 0.6 %
Device Holder and Phantom	2.4	Rectangular	√3	1	± 1.4 %
Power Drift	5.0	Rectangular	√3	1	± 2.9 %
Phantom and Setup Related					
Phantom Thickness	2.4	Rectangular	√3	1	± 1.4 %
Combined Standard Uncertainty					± 16.30 %
Coverage Factor for 95 %					K = 2
Expanded Std. Uncertainty on Power					± 32.6 %
Expanded Std. Uncertainty on Field					± 16.3 %

Table 12.1 Uncertainty Budget of HAC free field assessment

Remark:

Worst-Case uncertainty budget for HAC free field assessment according to ANSIC63.19 [1], [2]. The budget is valid for the frequency range 700 MHz - 3 GHz and represents a worst case analysis.



13. References

- [1] ANSI C63.19-2011, "American National Standard for Methods of Measurement of Compatibility between Wireless Communications Devices and Hearing Aids", 27 May 2011.
- [2] FCC KDB 285076 D01v04r01, "Equipment Authorization Guidance for Hearing Aid Compatibility", Apr 2016
- [3] FCC KDB 285076 D02v02, "Guidance for Performing T-Coil tests for Air Interfaces Supporting Voice over IP", Apr 2016
- [4] SPEAG DASY System Handbook



Appendix A. Plots of System Performance Check

The plots are shown as follows.

HAC_E_Dipole_835

DUT: HAC-Dipole 835 MHz

Communication System: UID 0, CW; Frequency: 835 MHz; Duty Cycle: 1:1

Medium: Air Medium parameters used: $\sigma = 0$ S/m, $\epsilon_r = 1$; $\rho = 0$ kg/m³

Ambient Temperature : 23.3 °C

DASY5 Configuration:

- Probe: ER3DV6 - SN2476; ConvF(1, 1, 1); Calibrated: 2016.11.23;
- Sensor-Surface: (Fix Surface)
- Electronics: DAE4 Sn1326; Calibrated: 2017.9.15
- Phantom: HAC Test Arch with AMCC; Type: SD HAC P01 BA;
- Measurement SW: DASY52, Version 52.8 (8); SEMCAD X Version 14.6.10 (7331)

E Scan - measurement distance from the probe sensor center to CD835 = 15mm/Hearing Aid Compatibility Test at 15mm distance (41x361x1): Interpolated grid:

dx=0.5000 mm, dy=0.5000 mm

Device Reference Point: 0, 0, -6.3 mm

Reference Value = 98.49 V/m; Power Drift = 0.01 dB

PMR not calibrated. PMF = 1.000 is applied.

E-field emissions = 107.8 V/m

Average value of Total=(107.8+98.36)/2=103.08 V/m

PMF scaled E-field

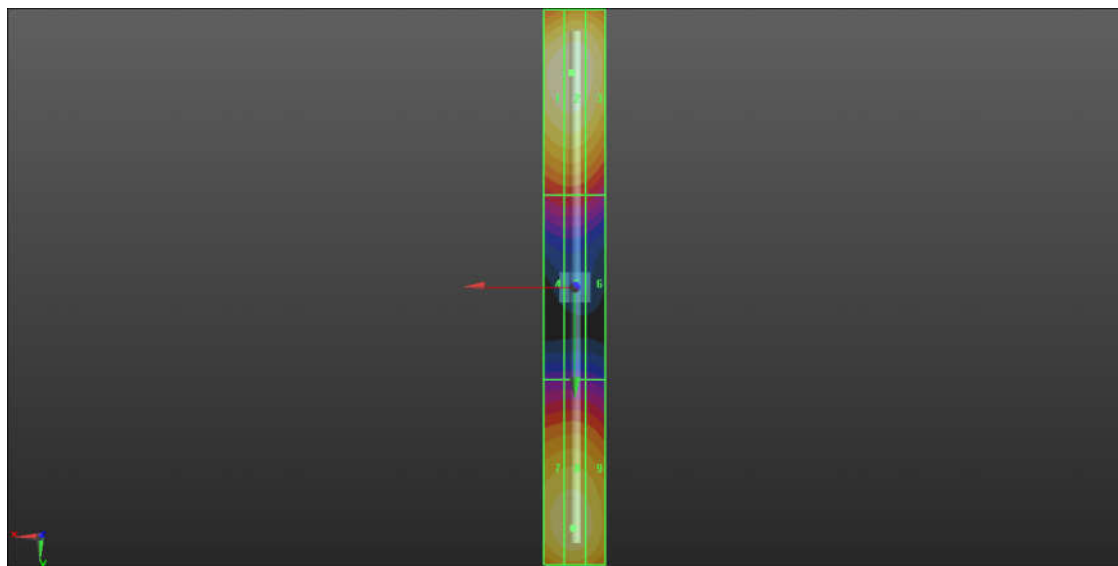
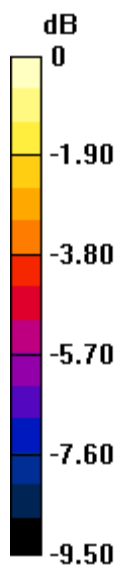
Grid 1 M4 106.3 V/m	Grid 2 M4 107.8 V/m	Grid 3 M4 104.5 V/m
Grid 4 M4 65.35 V/m	Grid 5 M4 65.73 V/m	Grid 6 M4 63.59 V/m
Grid 7 M4 97.28 V/m	Grid 8 M4 98.36 V/m	Grid 9 M4 95.78 V/m

Cursor:

Total = 107.8 V/m

E Category: M4

Location: 1, -69.5, 9.7 mm



0 dB = 107.8 V/m = 40.65 dBV/m

HAC_E_Dipole_1880

DUT: HAC Dipole 1880 MHz

Communication System: UID 0, CW (0); Frequency: 1880 MHz; Duty Cycle: 1:1

Medium: Air Medium parameters used: $\sigma = 0$ S/m, $\epsilon_r = 1$; $\rho = 0$ kg/m³

Ambient Temperature : 23.3 °C

DASY5 Configuration:

- Probe: ER3DV6 - SN2476; ConvF(1, 1, 1); Calibrated: 2016.11.23;
- Sensor-Surface: (Fix Surface)
- Electronics: DAE4 Sn1326; Calibrated: 2017.9.15
- Phantom: HAC Test Arch with AMCC; Type: SD HAC P01 BA;
- Measurement SW: DASY52, Version 52.8 (8); SEMCAD X Version 14.6.10 (7331)

E Scan - measurement distance from the probe sensor center to CD1880 = 15mm/Hearing Aid Compatibility Test at 15mm distance (41x181x1): Interpolated grid:

dx=0.5000 mm, dy=0.5000 mm

Device Reference Point: 0, 0, -6.3 mm

Reference Value = 134.8 V/m; Power Drift = -0.04 dB

PMR not calibrated. PMF = 1.000 is applied.

E-field emissions = 87.66 V/m

Average value of Total=(87.66+81.13)/2=84.395 V/m

PMF scaled E-field

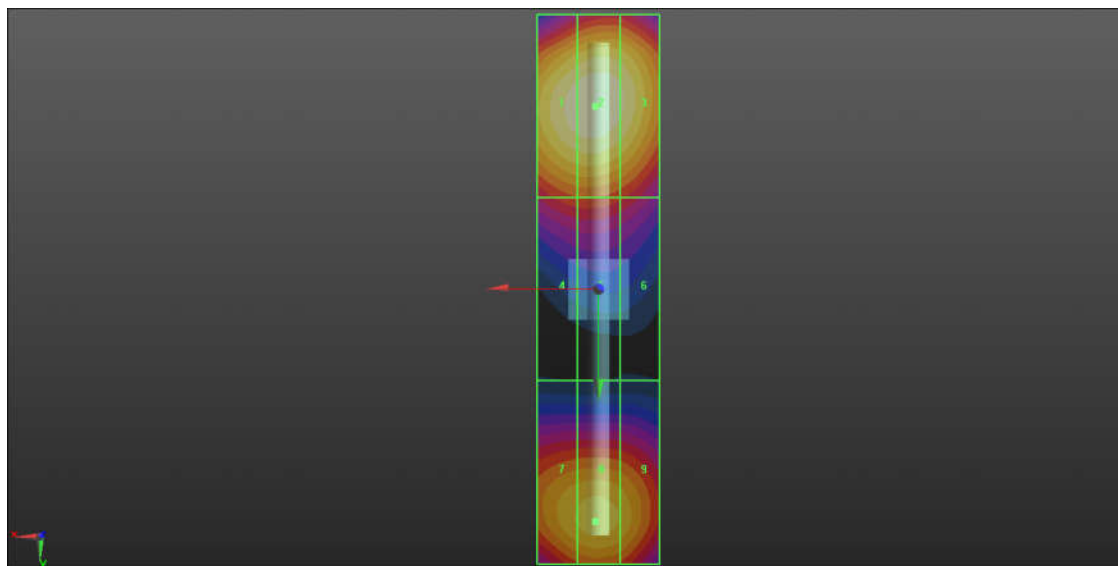
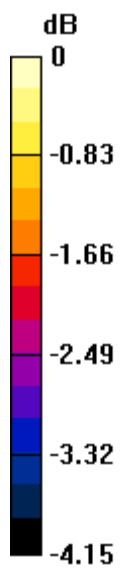
Grid 1 M3 86.38 V/m	Grid 2 M3 87.66 V/m	Grid 3 M3 85.48 V/m
Grid 4 M3 72.16 V/m	Grid 5 M3 72.35 V/m	Grid 6 M3 70.66 V/m
Grid 7 M3 79.77 V/m	Grid 8 M3 81.13 V/m	Grid 9 M3 79.33 V/m

Cursor:

Total = 87.66 V/m

E Category: M3

Location: 0.5, -30, 9.7 mm



0 dB = 87.96 V/m = 38.89 dBV/m

HAC_E_Dipole_2600

DUT: HAC Dipole 2600 MHz

Communication System: UID 0, CW (0); Frequency: 2600 MHz; Duty Cycle: 1:1

Medium: Air Medium parameters used: $\sigma = 0$ S/m, $\epsilon_r = 1$; $\rho = 0$ kg/m³

Ambient Temperature : 23.3 °C

DASY5 Configuration:

- Probe: ER3DV6 - SN2476; ConvF(1, 1, 1); Calibrated: 2017.1.25;

- Sensor-Surface: (Fix Surface)

- Electronics: DAE4 Sn1326; Calibrated: 2017.9.15

- Phantom: HAC Test Arch with AMCC; Type: SD HAC P01 BA;

- Measurement SW: DASY52, Version 52.8 (8); SEMCAD X Version 14.6.10 (7331)

E Scan - measurement distance from the probe sensor center to CD2600 =

15mm/Hearing Aid Compatibility Test at 15mm distance (41x181x1): Interpolated grid:

dx=0.5000 mm, dy=0.5000 mm

Device Reference Point: 0, 0, -6.3 mm

Reference Value = 69.29 V/m; Power Drift = -0.01 dB

PMR not calibrated. PMF = 1.000 is applied.

E-field emissions = 82.07 V/m

Average value of Total=(92.54+85.17)/2=88.855 V/m

PMF scaled E-field

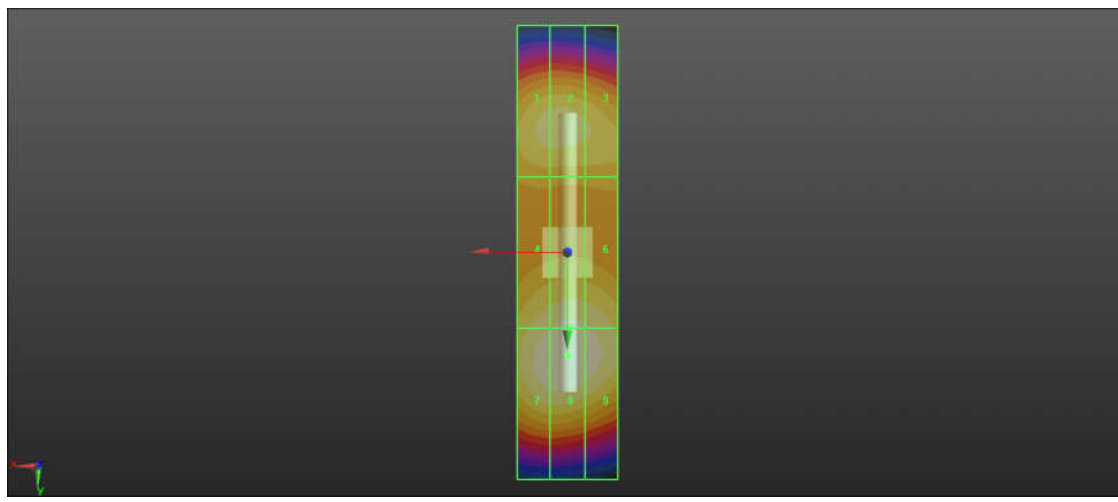
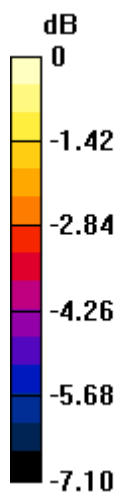
Grid 1 M3 84.23 V/m	Grid 2 M3 85.17 V/m	Grid 3 M3 83.51 V/m
Grid 4 M3 86.39 V/m	Grid 5 M3 88.55 V/m	Grid 6 M3 87.63 V/m
Grid 7 M3 90.56 V/m	Grid 8 M3 92.54 V/m	Grid 9 M3 91.01 V/m

Cursor:

Total = 92.54 V/m

E Category: M3

Location: 0, 20.5, 9.7 mm



0 dB = 92.54 V/m = 39.33 dBV/m



Appendix B. Plots of RF Emission Measurement

The plots are shown as follows.

1 HAC RF GSM850_Voice_Ch128_E

Communication System: UID 10021 - DAB, GSM-FDD (TDMA, GMSK); Frequency: 824.2 MHz; Duty Cycle: 1:8.3

Medium: Air Medium parameters used: $\sigma = 0$ S/m, $\epsilon_r = 1$; $\rho = 0$ kg/m³

Ambient Temperature : 23.3 °C

DASY5 Configuration:

- Probe: ER3DV6 - SN2476; ConvF(1, 1, 1); Calibrated: 2016.11.23;
- Sensor-Surface: (Fix Surface)
- Electronics: DAE4 Sn1326; Calibrated: 2017.9.15
- Phantom: HAC Test Arch with AMCC; Type: SD HAC P01 BA;
- Measurement SW: DASY52, Version 52.8 (8); SEMCAD X Version 14.6.10 (7331)

Ch128/Hearing Aid Compatibility Test (101x101x1): Interpolated grid: dx=0.5000 mm, dy=0.5000 mm

Device Reference Point: 0, 0, -6.3 mm

Reference Value = 92.63 V/m; Power Drift = 0.02 dB

Applied MIF = 3.63 dB

RF audio interference level = 40.38 dBV/m

Emission category: M3

MIF scaled E-field

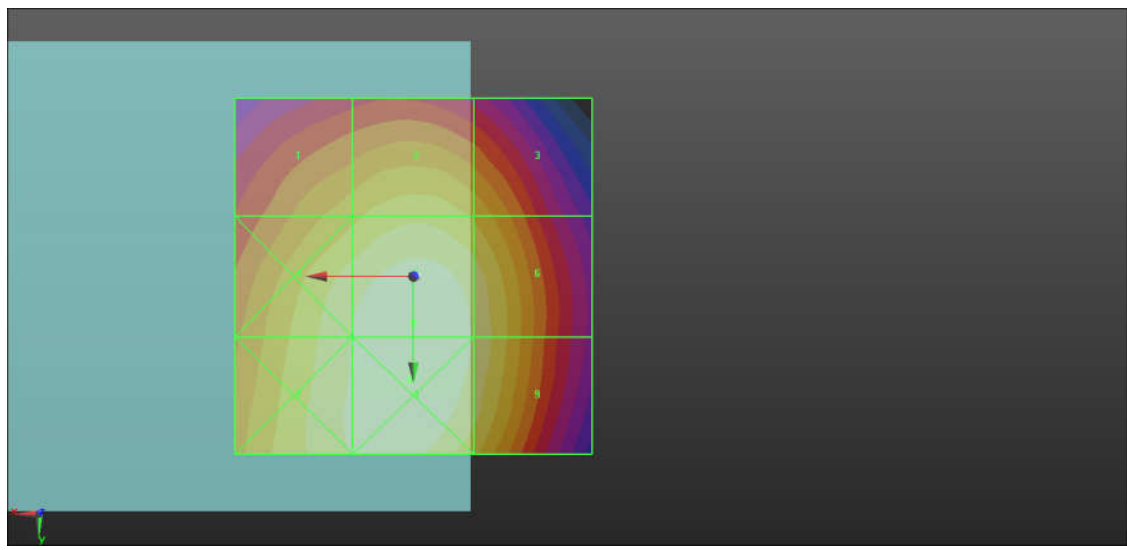
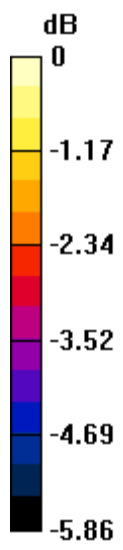
Grid 1 M4 39.11 dBV/m	Grid 2 M4 39.5 dBV/m	Grid 3 M4 39.15 dBV/m
Grid 4 M3 40.01 dBV/m	Grid 5 M3 40.38 dBV/m	Grid 6 M4 39.95 dBV/m
Grid 7 M3 40.07 dBV/m	Grid 8 M3 40.38 dBV/m	Grid 9 M4 39.95 dBV/m

Cursor:

Total = 40.38 dBV/m

E Category: M3

Location: 0.5, 14.5, 9.7 mm



0 dB = 104.5 V/m = 40.38 dBV/m

2 HAC RF GSM850_Voice_Ch189_E

Communication System: UID 10021 - DAB, GSM-FDD (TDMA, GMSK); Frequency: 836.4 MHz; Duty Cycle: 1:8.3

Medium: Air Medium parameters used: $\sigma = 0$ S/m, $\epsilon_r = 1$; $\rho = 0$ kg/m³

Ambient Temperature : 23.3 °C

DASY5 Configuration:

- Probe: ER3DV6 - SN2476; ConvF(1, 1, 1); Calibrated: 2016.11.23;
- Sensor-Surface: (Fix Surface)
- Electronics: DAE4 Sn1326; Calibrated: 2017.9.15
- Phantom: HAC Test Arch with AMCC; Type: SD HAC P01 BA;
- Measurement SW: DASY52, Version 52.8 (8); SEMCAD X Version 14.6.10 (7331)

Ch189/Hearing Aid Compatibility Test (101x101x1): Interpolated grid: dx=0.5000 mm, dy=0.5000 mm

Device Reference Point: 0, 0, -6.3 mm

Reference Value = 90.66 V/m; Power Drift = -0.10 dB

Applied MIF = 3.63 dB

RF audio interference level = 40.17 dBV/m

Emission category: M3

MIF scaled E-field

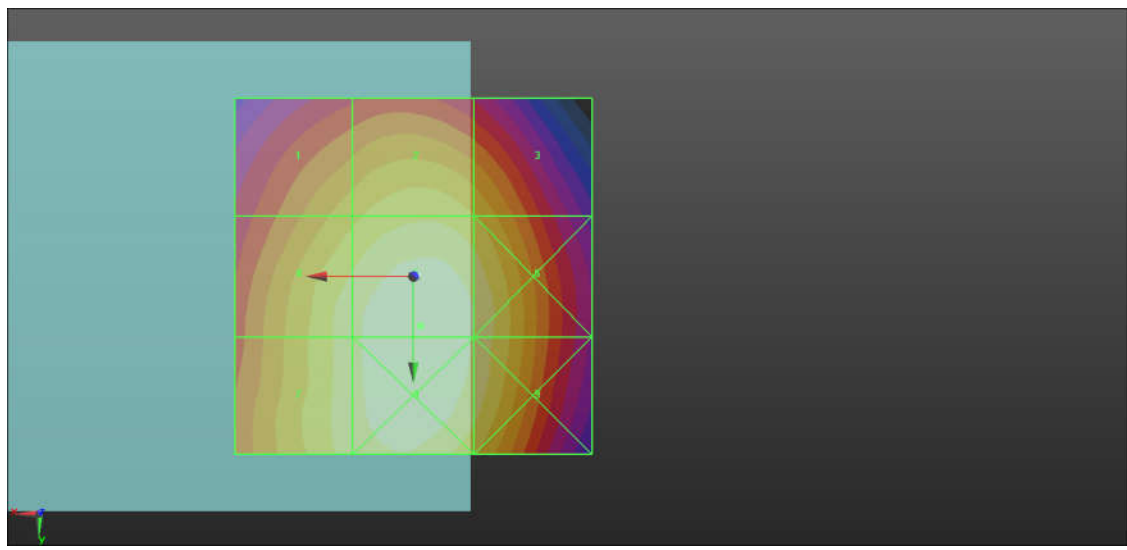
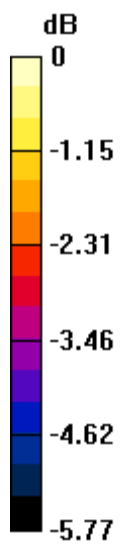
Grid 1 M4 38.92 dBV/m	Grid 2 M4 39.35 dBV/m	Grid 3 M4 39.04 dBV/m
Grid 4 M4 39.68 dBV/m	Grid 5 M3 40.17 dBV/m	Grid 6 M4 39.8 dBV/m
Grid 7 M4 39.67 dBV/m	Grid 8 M3 40.17 dBV/m	Grid 9 M4 39.75 dBV/m

Cursor:

Total = 40.17 dBV/m

E Category: M3

Location: -1, 7, 9.7 mm



0 dB = 102.0 V/m = 40.17 dBV/m

3 HAC RF GSM850_Voice_Ch251_E

Communication System: UID 10021 - DAB, GSM-FDD (TDMA, GMSK); Frequency: 848.8 MHz; Duty Cycle: 1:8.3

Medium: Air Medium parameters used: $\sigma = 0$ S/m, $\epsilon_r = 1$; $\rho = 0$ kg/m³

Ambient Temperature : 23.3 °C

DASY5 Configuration:

- Probe: ER3DV6 - SN2476; ConvF(1, 1, 1); Calibrated: 2016.11.23;
- Sensor-Surface: (Fix Surface)
- Electronics: DAE4 Sn1326; Calibrated: 2017.9.15
- Phantom: HAC Test Arch with AMCC; Type: SD HAC P01 BA;
- Measurement SW: DASY52, Version 52.8 (8); SEMCAD X Version 14.6.10 (7331)

Ch251/Hearing Aid Compatibility Test (101x101x1): Interpolated grid: dx=0.5000 mm, dy=0.5000 mm

Device Reference Point: 0, 0, -6.3 mm

Reference Value = 91.34 V/m; Power Drift = -0.01 dB

Applied MIF = 3.63 dB

RF audio interference level = 40.22 dBV/m

Emission category: M3

MIF scaled E-field

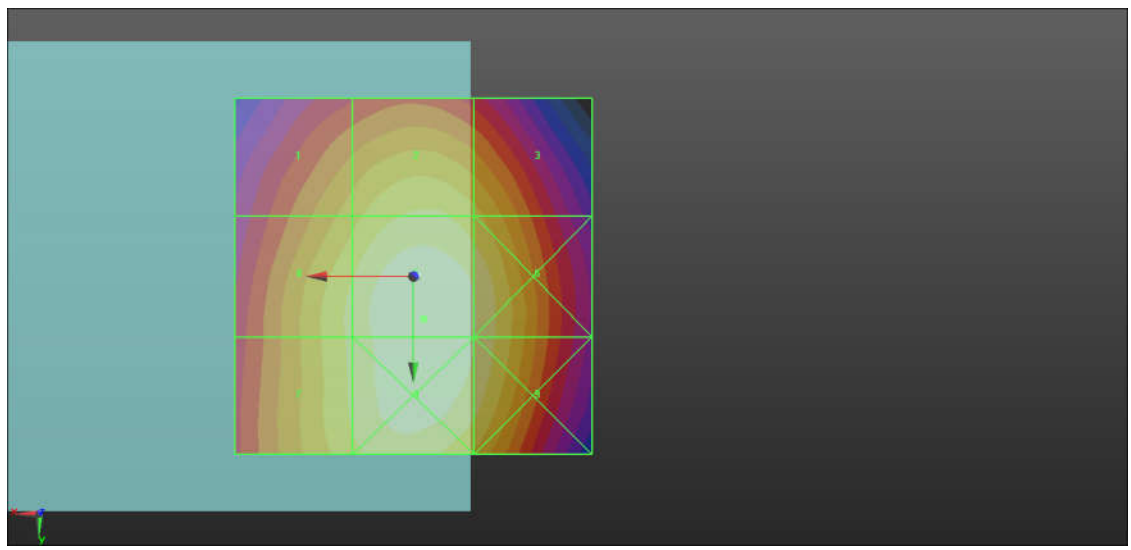
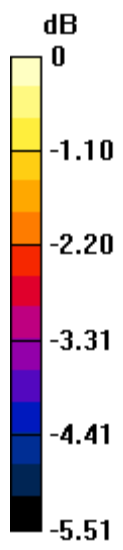
Grid 1 M4 38.98 dBV/m	Grid 2 M4 39.55 dBV/m	Grid 3 M4 39.25 dBV/m
Grid 4 M4 39.62 dBV/m	Grid 5 M3 40.22 dBV/m	Grid 6 M4 39.87 dBV/m
Grid 7 M4 39.59 dBV/m	Grid 8 M3 40.2 dBV/m	Grid 9 M4 39.86 dBV/m

Cursor:

Total = 40.22 dBV/m

E Category: M3

Location: -1.5, 6, 9.7 mm



0 dB = 102.5 V/m = 40.21 dBV/m

4 HAC RF GSM1900_Voice_Ch512_E

Communication System: UID 10021 - DAB, GSM-FDD (TDMA, GMSK); Frequency: 1850.2 MHz; Duty Cycle: 1:8.3

Medium: Air Medium parameters used: $\sigma = 0$ S/m, $\epsilon_r = 1$; $\rho = 0$ kg/m³

Ambient Temperature : 23.3 °C

DASY5 Configuration:

- Probe: ER3DV6 - SN2476; ConvF(1, 1, 1); Calibrated: 2016.11.23;
- Sensor-Surface: (Fix Surface)
- Electronics: DAE4 Sn1326; Calibrated: 2017.9.15
- Phantom: HAC Test Arch with AMCC; Type: SD HAC P01 BA;
- Measurement SW: DASY52, Version 52.8 (8); SEMCAD X Version 14.6.10 (7331)

Ch512/Hearing Aid Compatibility Test (101x101x1): Interpolated grid: dx=0.5000 mm, dy=0.5000 mm

Device Reference Point: 0, 0, -6.3 mm

Reference Value = 19.31 V/m; Power Drift = 0.12 dB

Applied MIF = 3.63 dB

RF audio interference level = 28.71 dBV/m

Emission category: M4

MIF scaled E-field

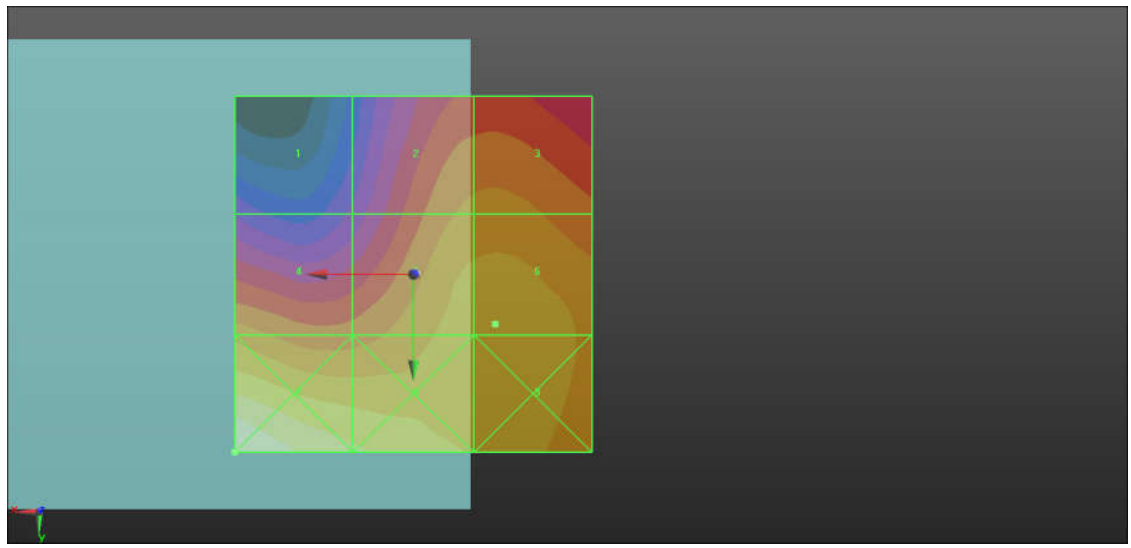
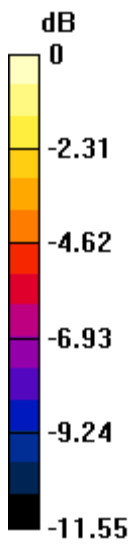
Grid 1 M4 23.75 dBV/m	Grid 2 M4 27.58 dBV/m	Grid 3 M4 27.67 dBV/m
Grid 4 M4 27.86 dBV/m	Grid 5 M4 28.62 dBV/m	Grid 6 M4 28.71 dBV/m
Grid 7 M3 31.18 dBV/m	Grid 8 M4 29.8 dBV/m	Grid 9 M4 28.81 dBV/m

Cursor:

Total = 31.18 dBV/m

E Category: M3

Location: 25, 25, 9.7 mm



0 dB = 36.23 V/m = 31.18 dBV/m

5 HAC RF GSM1900_Voice_Ch661_E

Communication System: UID 10021 - DAB, GSM-FDD (TDMA, GMSK); Frequency: 1880 MHz; Duty Cycle: 1:8.3

Medium: Air Medium parameters used: $\sigma = 0$ S/m, $\epsilon_r = 1$; $\rho = 0$ kg/m³

Ambient Temperature : 23.3 °C

DASY5 Configuration:

- Probe: ER3DV6 - SN2476; ConvF(1, 1, 1); Calibrated: 2016.11.23;
- Sensor-Surface: (Fix Surface)
- Electronics: DAE4 Sn1326; Calibrated: 2017.9.15
- Phantom: HAC Test Arch with AMCC; Type: SD HAC P01 BA;
- Measurement SW: DASY52, Version 52.8 (8); SEMCAD X Version 14.6.10 (7331)

Ch661/Hearing Aid Compatibility Test (101x101x1): Interpolated grid: dx=0.5000 mm, dy=0.5000 mm

Device Reference Point: 0, 0, -6.3 mm

Reference Value = 19.78 V/m; Power Drift = -0.07 dB

Applied MIF = 3.63 dB

RF audio interference level = 28.81 dBV/m

Emission category: M4

MIF scaled E-field

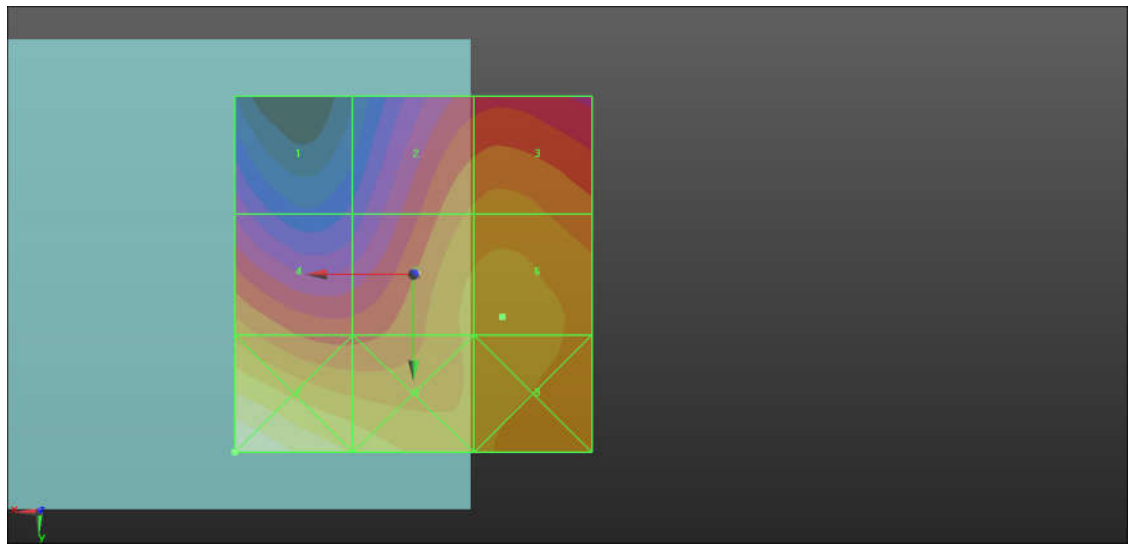
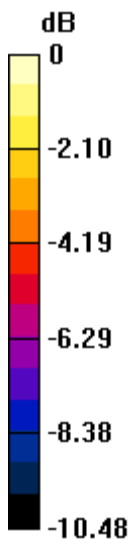
Grid 1 M4 24.89 dBV/m	Grid 2 M4 27.88 dBV/m	Grid 3 M4 28.08 dBV/m
Grid 4 M4 28.28 dBV/m	Grid 5 M4 28.64 dBV/m	Grid 6 M4 28.81 dBV/m
Grid 7 M3 31.22 dBV/m	Grid 8 M4 29.78 dBV/m	Grid 9 M4 28.77 dBV/m

Cursor:

Total = 31.22 dBV/m

E Category: M3

Location: 25, 25, 9.7 mm



0 dB = 36.39 V/m = 31.22 dBV/m

6 HAC RF GSM1900_Voice_Ch810_E

Communication System: UID 10021 - DAB, GSM-FDD (TDMA, GMSK); Frequency: 1909.8 MHz; Duty Cycle: 1:8.3

Medium: Air Medium parameters used: $\sigma = 0$ S/m, $\epsilon_r = 1$; $\rho = 0$ kg/m³

Ambient Temperature : 23.3 °C

DASY5 Configuration:

- Probe: ER3DV6 - SN2476; ConvF(1, 1, 1); Calibrated: 2016.11.23;
- Sensor-Surface: (Fix Surface)
- Electronics: DAE4 Sn1326; Calibrated: 2017.9.15
- Phantom: HAC Test Arch with AMCC; Type: SD HAC P01 BA;
- Measurement SW: DASY52, Version 52.8 (8); SEMCAD X Version 14.6.10 (7331)

Ch810/Hearing Aid Compatibility Test (101x101x1): Interpolated grid: dx=0.5000 mm, dy=0.5000 mm

Device Reference Point: 0, 0, -6.3 mm

Reference Value = 17.75 V/m; Power Drift = 0.19 dB

Applied MIF = 3.63 dB

RF audio interference level = 28.32 dBV/m

Emission category: M4

MIF scaled E-field

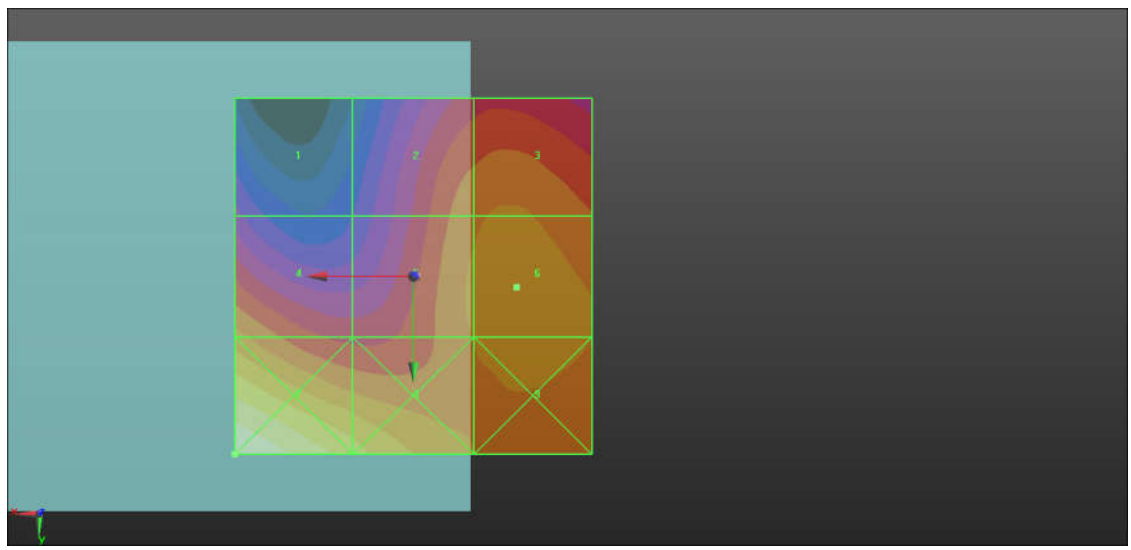
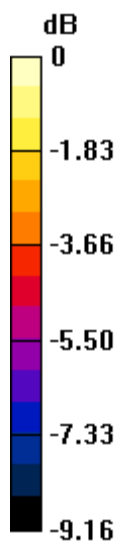
Grid 1 M4 25.14 dBV/m	Grid 2 M4 27.75 dBV/m	Grid 3 M4 27.99 dBV/m
Grid 4 M4 28.16 dBV/m	Grid 5 M4 28.03 dBV/m	Grid 6 M4 28.32 dBV/m
Grid 7 M3 30.94 dBV/m	Grid 8 M4 29.42 dBV/m	Grid 9 M4 28.21 dBV/m

Cursor:

Total = 30.94 dBV/m

E Category: M3

Location: 25, 25, 9.7 mm



0 dB = 35.24 V/m = 30.94 dBV/m

7 HAC RF CDMA2000 BC0_1xRTT, RC1 SO3, 18th Rate_Ch1013_E

Communication System: UID 10295 - AAB, CDMA2000, RC1, SO3, 1/8th Rate 25 fr.; Frequency: 824.7 MHz; Duty Cycle: 1:8.3

Medium: Air Medium parameters used: $\sigma = 0$ S/m, $\epsilon_r = 1$; $\rho = 0$ kg/m³

Ambient Temperature : 23.3 °C

DASY5 Configuration:

- Probe: ER3DV6 - SN2476; ConvF(1, 1, 1); Calibrated: 2016.11.23;
- Sensor-Surface: (Fix Surface)
- Electronics: DAE4 Sn1326; Calibrated: 2017.9.15
- Phantom: HAC Test Arch with AMCC; Type: SD HAC P01 BA;
- Measurement SW: DASY52, Version 52.8 (8); SEMCAD X Version 14.6.10 (7331)

Ch1013/Hearing Aid Compatibility Test (101x101x1): Interpolated grid: dx=0.5000 mm, dy=0.5000 mm

Device Reference Point: 0, 0, -6.3 mm

Reference Value = 32.57 V/m; Power Drift = -0.01 dB

Applied MIF = 3.26 dB

RF audio interference level = 30.81 dBV/m

Emission category: M4

MIF scaled E-field

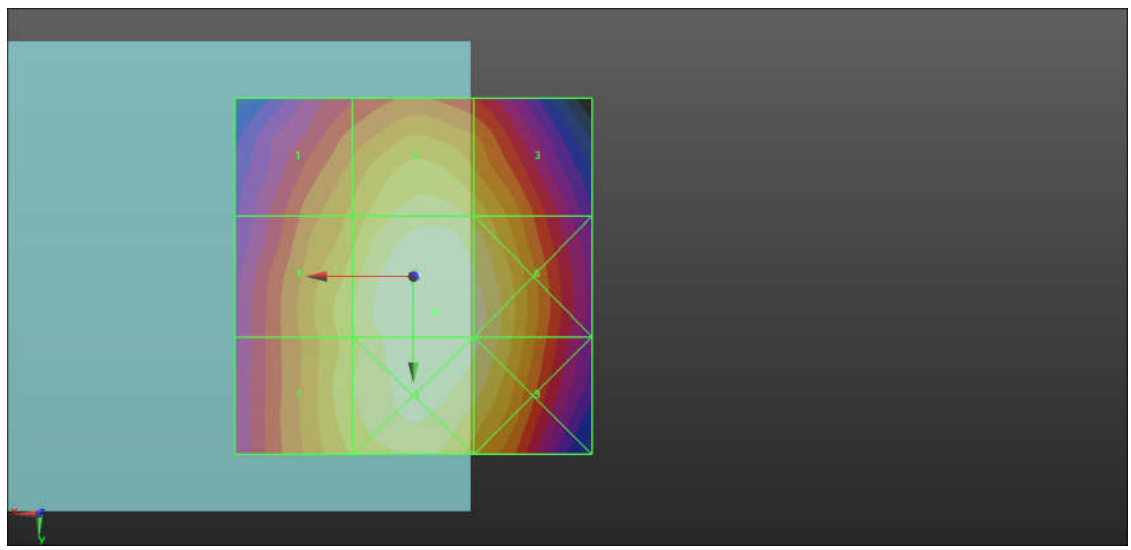
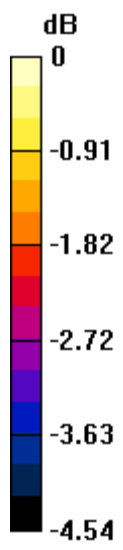
Grid 1 M4 29.71 dBV/m	Grid 2 M4 30.41 dBV/m	Grid 3 M4 30.13 dBV/m
Grid 4 M4 30.21 dBV/m	Grid 5 M4 30.81 dBV/m	Grid 6 M4 30.65 dBV/m
Grid 7 M4 30.21 dBV/m	Grid 8 M4 30.79 dBV/m	Grid 9 M4 30.59 dBV/m

Cursor:

Total = 30.81 dBV/m

E Category: M4

Location: -3, 5, 9.7 mm



0 dB = 34.73 V/m = 30.81 dBV/m

8 HAC RF CDMA2000 BC0_1xRTT, RC1 SO3, 18th Rate_Ch384_E

Communication System: UID 10295 - AAB, CDMA2000, RC1, SO3, 1/8th Rate 25 fr.; Frequency: 836.52 MHz; Duty Cycle: 1:8.3

Medium: Air Medium parameters used: $\sigma = 0$ S/m, $\epsilon_r = 1$; $\rho = 0$ kg/m³

Ambient Temperature : 23.3 °C

DASY5 Configuration:

- Probe: ER3DV6 - SN2476; ConvF(1, 1, 1); Calibrated: 2016.11.23;
- Sensor-Surface: (Fix Surface)
- Electronics: DAE4 Sn1326; Calibrated: 2017.9.15
- Phantom: HAC Test Arch with AMCC; Type: SD HAC P01 BA;
- Measurement SW: DASY52, Version 52.8 (8); SEMCAD X Version 14.6.10 (7331)

Ch384/Hearing Aid Compatibility Test (101x101x1): Interpolated grid: dx=0.5000 mm, dy=0.5000 mm

Device Reference Point: 0, 0, -6.3 mm

Reference Value = 32.82 V/m; Power Drift = 0.01 dB

Applied MIF = 3.26 dB

RF audio interference level = 31.02 dBV/m

Emission category: M4

MIF scaled E-field

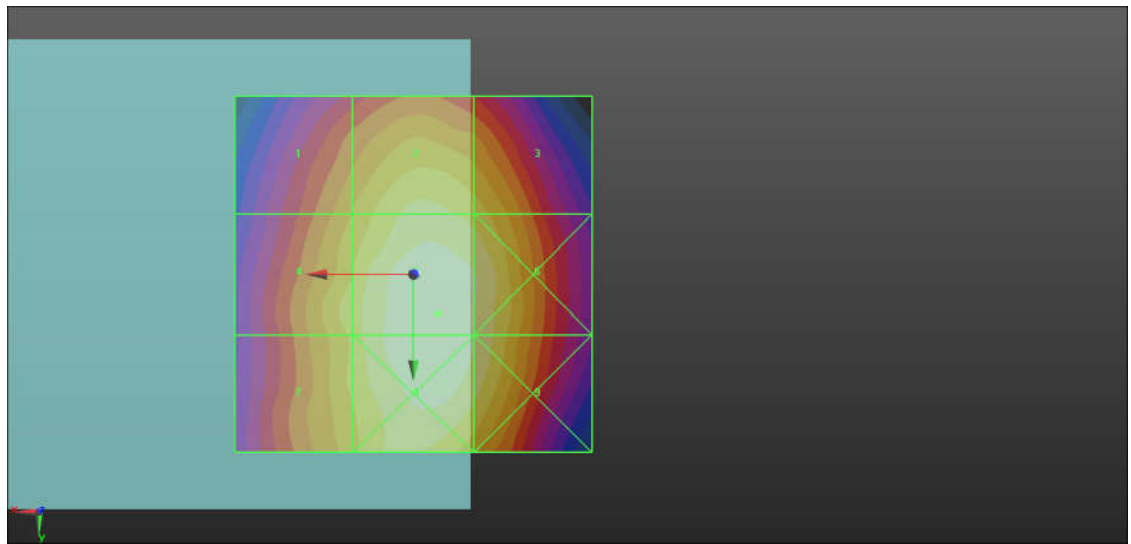
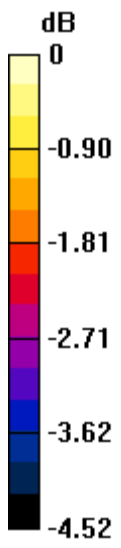
Grid 1 M4 29.85 dBV/m	Grid 2 M4 30.54 dBV/m	Grid 3 M4 30.3 dBV/m
Grid 4 M4 30.33 dBV/m	Grid 5 M4 31.02 dBV/m	Grid 6 M4 30.76 dBV/m
Grid 7 M4 30.23 dBV/m	Grid 8 M4 30.99 dBV/m	Grid 9 M4 30.75 dBV/m

Cursor:

Total = 31.02 dBV/m

E Category: M4

Location: -3.5, 5.5, 9.7 mm



0 dB = 35.58 V/m = 31.02 dBV/m

9 HAC RF CDMA2000 BC0_1xRTT, RC1 SO3, 18th Rate_Ch777_E

Communication System: UID 10295 - AAB, CDMA2000, RC1, SO3, 1/8th Rate 25 fr.; Frequency: 848.31 MHz; Duty Cycle: 1:8.3

Medium: Air Medium parameters used: $\sigma = 0$ S/m, $\epsilon_r = 1$; $\rho = 0$ kg/m³

Ambient Temperature : 23.3 °C

DASY5 Configuration:

- Probe: ER3DV6 - SN2476; ConvF(1, 1, 1); Calibrated: 2016.11.23;
- Sensor-Surface: (Fix Surface)
- Electronics: DAE4 Sn1326; Calibrated: 2017.9.15
- Phantom: HAC Test Arch with AMCC; Type: SD HAC P01 BA;
- Measurement SW: DASY52, Version 52.8 (8); SEMCAD X Version 14.6.10 (7331)

Ch777/Hearing Aid Compatibility Test (101x101x1): Interpolated grid: dx=0.5000 mm, dy=0.5000 mm

Device Reference Point: 0, 0, -6.3 mm

Reference Value = 34.73 V/m; Power Drift = -0.11 dB

Applied MIF = 3.26 dB

RF audio interference level = 31.34 dBV/m

Emission category: M4

MIF scaled E-field

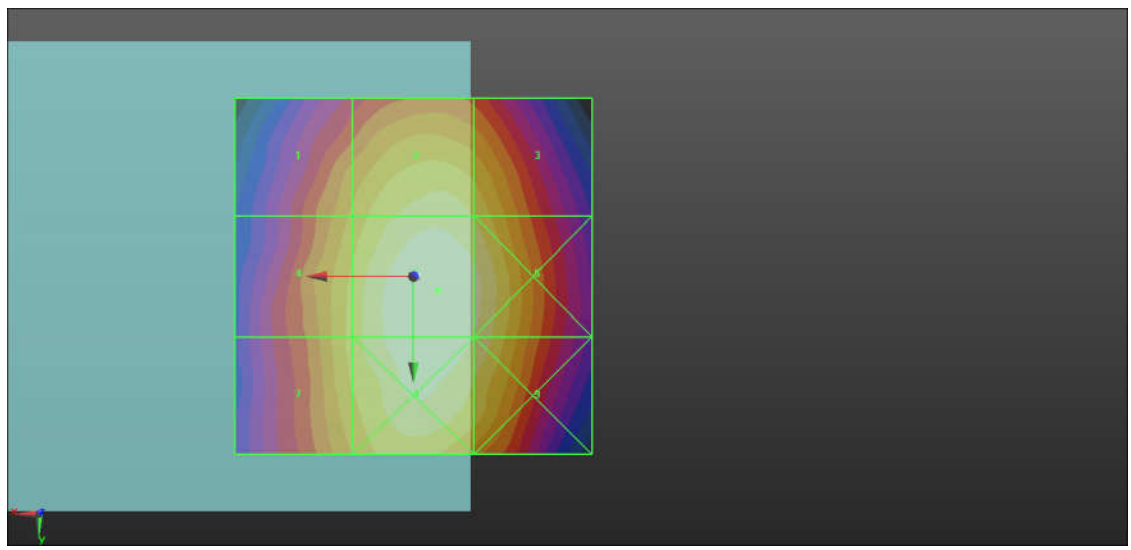
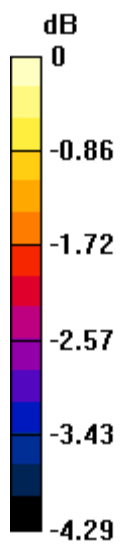
Grid 1 M4 30.27 dBV/m	Grid 2 M4 30.98 dBV/m	Grid 3 M4 30.75 dBV/m
Grid 4 M4 30.62 dBV/m	Grid 5 M4 31.34 dBV/m	Grid 6 M4 31.15 dBV/m
Grid 7 M4 30.62 dBV/m	Grid 8 M4 31.26 dBV/m	Grid 9 M4 31.05 dBV/m

Cursor:

Total = 31.34 dBV/m

E Category: M4

Location: -3.5, 2, 9.7 mm



0 dB = 36.91 V/m = 31.34 dBV/m

10 HAC RF CDMA2000 BC1_ 1xRTT, RC1 SO3, 18th Rate_Ch25_E

Communication System: UID 10295 - AAB, CDMA2000, RC1, SO3, 1/8th Rate 25 fr.; Frequency: 1851.25 MHz; Duty Cycle: 1:8.3

Medium: Air Medium parameters used: $\sigma = 0$ S/m, $\epsilon_r = 1$; $\rho = 0$ kg/m³

Ambient Temperature : 23.3 °C

DASY5 Configuration:

- Probe: ER3DV6 - SN2476; ConvF(1, 1, 1); Calibrated: 2016.11.23;
- Sensor-Surface: (Fix Surface)
- Electronics: DAE4 Sn1326; Calibrated: 2017.9.15
- Phantom: HAC Test Arch with AMCC; Type: SD HAC P01 BA;
- Measurement SW: DASY52, Version 52.8 (8); SEMCAD X Version 14.6.10 (7331)

Ch25/Hearing Aid Compatibility Test (101x101x1): Interpolated grid: dx=0.5000 mm, dy=0.5000 mm

Device Reference Point: 0, 0, -6.3 mm

Reference Value = 10.53 V/m; Power Drift = -0.02 dB

Applied MIF = 3.26 dB

RF audio interference level = 23.31 dBV/m

Emission category: M4

MIF scaled E-field

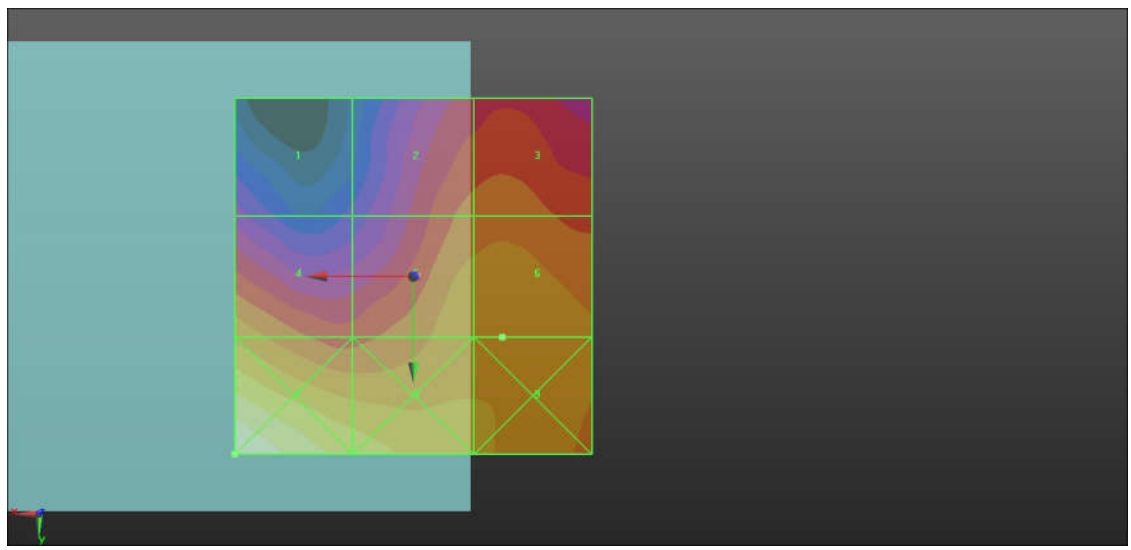
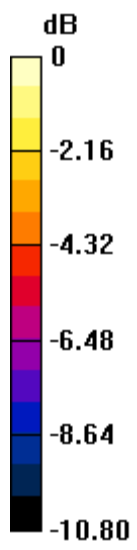
Grid 1 M4 19.42 dBV/m	Grid 2 M4 22.2 dBV/m	Grid 3 M4 22.36 dBV/m
Grid 4 M4 23.2 dBV/m	Grid 5 M4 23.2 dBV/m	Grid 6 M4 23.31 dBV/m
Grid 7 M4 26.19 dBV/m	Grid 8 M4 24.52 dBV/m	Grid 9 M4 23.47 dBV/m

Cursor:

Total = 26.19 dBV/m

E Category: M4

Location: 25, 25, 9.7 mm



0 dB = 20.39 V/m = 26.19 dBV/m

11 HAC RF CDMA2000 BC1_ 1xRTT, RC1 SO3, 18th Rate_Ch600_E

Communication System: UID 10295 - AAB, CDMA2000, RC1, SO3, 1/8th Rate 25 fr.; Frequency: 1880 MHz; Duty Cycle: 1:8.3

Medium: Air Medium parameters used: $\sigma = 0$ S/m, $\epsilon_r = 1$; $\rho = 0$ kg/m³

Ambient Temperature : 23.3 °C

DASY5 Configuration:

- Probe: ER3DV6 - SN2476; ConvF(1, 1, 1); Calibrated: 2016.11.23;
- Sensor-Surface: (Fix Surface)
- Electronics: DAE4 Sn1326; Calibrated: 2017.9.15
- Phantom: HAC Test Arch with AMCC; Type: SD HAC P01 BA;
- Measurement SW: DASY52, Version 52.8 (8); SEMCAD X Version 14.6.10 (7331)

Ch600/Hearing Aid Compatibility Test (101x101x1): Interpolated grid: dx=0.5000 mm, dy=0.5000 mm

Device Reference Point: 0, 0, -6.3 mm

Reference Value = 11.35 V/m; Power Drift = -0.01 dB

Applied MIF = 3.26 dB

RF audio interference level = 23.89 dBV/m

Emission category: M4

MIF scaled E-field

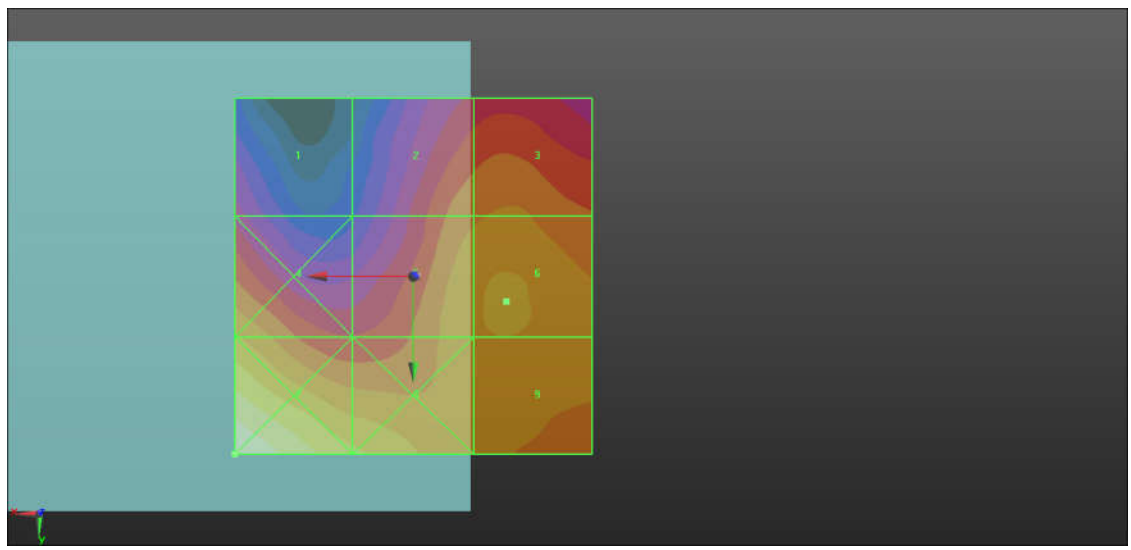
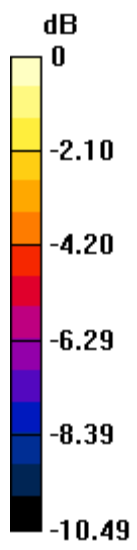
Grid 1 M4 20.73 dBV/m	Grid 2 M4 22.95 dBV/m	Grid 3 M4 23.2 dBV/m
Grid 4 M4 23.88 dBV/m	Grid 5 M4 23.68 dBV/m	Grid 6 M4 23.89 dBV/m
Grid 7 M4 26.56 dBV/m	Grid 8 M4 24.67 dBV/m	Grid 9 M4 23.78 dBV/m

Cursor:

Total = 26.56 dBV/m

E Category: M4

Location: 25, 25, 9.7 mm



0 dB = 21.29 V/m = 26.56 dBV/m

12 HAC RF CDMA2000 BC1_ 1xRTT, RC1 SO3, 18th Rate_Ch1175_E

Communication System: UID 10295 - AAB, CDMA2000, RC1, SO3, 1/8th Rate 25 fr.; Frequency: 1908.75 MHz; Duty Cycle: 1:8.3

Medium: Air Medium parameters used: $\sigma = 0$ S/m, $\epsilon_r = 1$; $\rho = 0$ kg/m³

Ambient Temperature : 23.3 °C

DASY5 Configuration:

- Probe: ER3DV6 - SN2476; ConvF(1, 1, 1); Calibrated: 2016.11.23;
- Sensor-Surface: (Fix Surface)
- Electronics: DAE4 Sn1326; Calibrated: 2017.9.15
- Phantom: HAC Test Arch with AMCC; Type: SD HAC P01 BA;
- Measurement SW: DASY52, Version 52.8 (8); SEMCAD X Version 14.6.10 (7331)

Ch1175/Hearing Aid Compatibility Test (101x101x1): Interpolated grid: dx=0.5000 mm, dy=0.5000 mm

Device Reference Point: 0, 0, -6.3 mm

Reference Value = 10.18 V/m; Power Drift = 0.01 dB

Applied MIF = 3.26 dB

RF audio interference level = 23.30 dBV/m

Emission category: M4

MIF scaled E-field

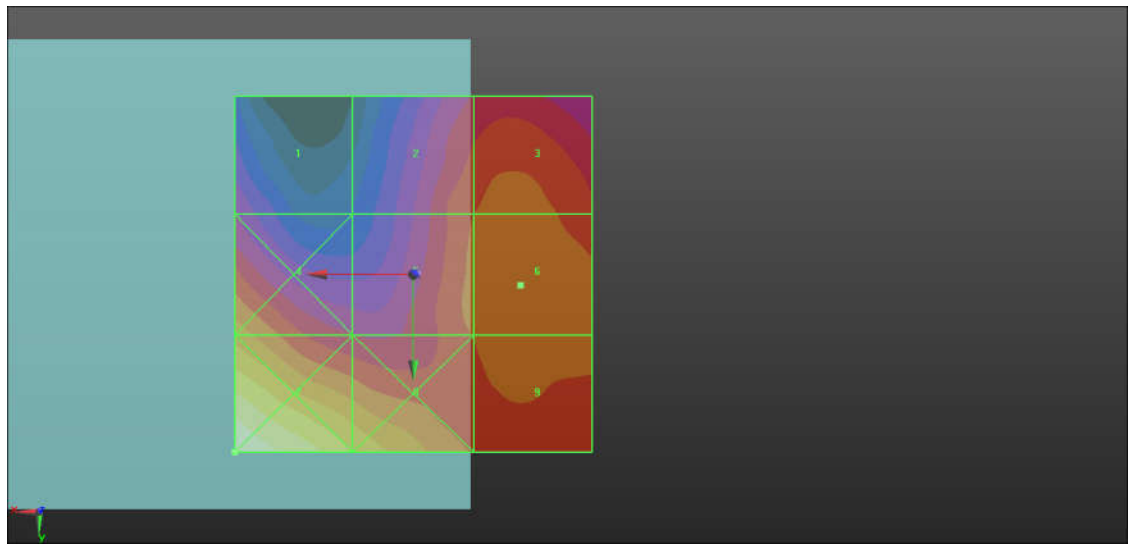
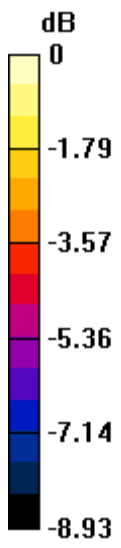
Grid 1 M4 20.99 dBV/m	Grid 2 M4 22.71 dBV/m	Grid 3 M4 23.01 dBV/m
Grid 4 M4 23.69 dBV/m	Grid 5 M4 22.97 dBV/m	Grid 6 M4 23.3 dBV/m
Grid 7 M4 26.27 dBV/m	Grid 8 M4 24.54 dBV/m	Grid 9 M4 23.18 dBV/m

Cursor:

Total = 26.27 dBV/m

E Category: M4

Location: 25, 25, 9.7 mm



0 dB = 20.59 V/m = 26.27 dBV/m

13 HAC RF CDMA2000 BC10_1xRTT, RC1 SO3, 18th Rate_Ch476_E

Communication System: UID 10295 - AAB, CDMA2000, RC1, SO3, 1/8th Rate 25 fr.; Frequency: 817.9 MHz; Duty Cycle: 1:8.3

Medium: Air Medium parameters used: $\sigma = 0$ S/m, $\epsilon_r = 1$; $\rho = 0$ kg/m³

Ambient Temperature : 23.3 °C

DASY5 Configuration:

- Probe: ER3DV6 - SN2476; ConvF(1, 1, 1); Calibrated: 2016.11.23;
- Sensor-Surface: (Fix Surface)
- Electronics: DAE4 Sn1326; Calibrated: 2017.9.15
- Phantom: HAC Test Arch with AMCC; Type: SD HAC P01 BA;
- Measurement SW: DASY52, Version 52.8 (8); SEMCAD X Version 14.6.10 (7331)

Ch476/Hearing Aid Compatibility Test (101x101x1): Interpolated grid: dx=0.5000 mm, dy=0.5000 mm

Device Reference Point: 0, 0, -6.3 mm

Reference Value = 34.54 V/m; Power Drift = -0.09 dB

Applied MIF = 3.26 dB

RF audio interference level = 31.36 dBV/m

Emission category: M4

MIF scaled E-field

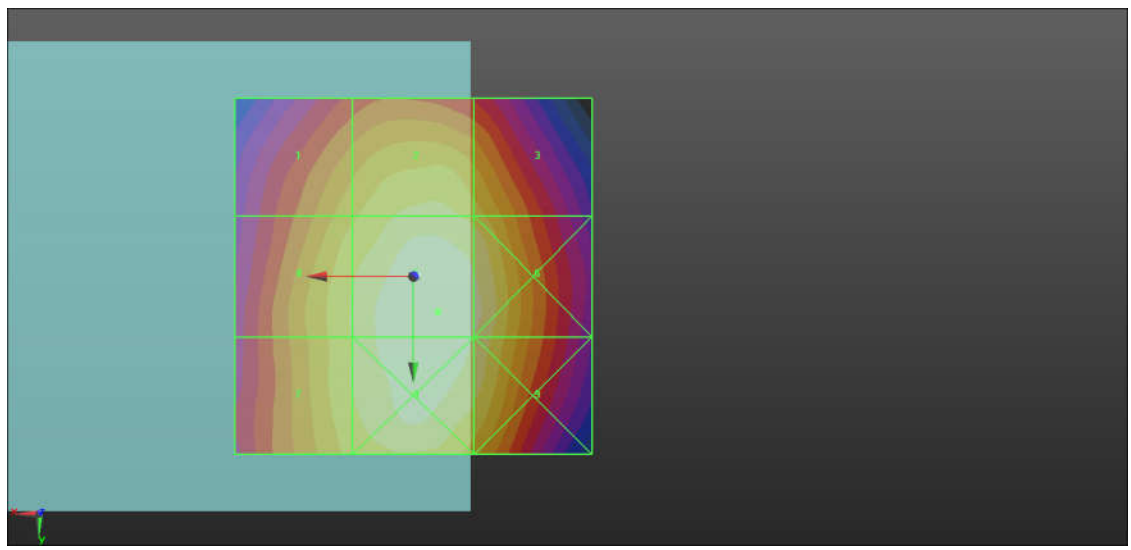
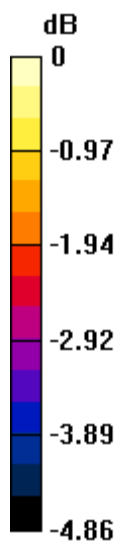
Grid 1 M4 30.34 dBV/m	Grid 2 M4 30.85 dBV/m	Grid 3 M4 30.58 dBV/m
Grid 4 M4 30.76 dBV/m	Grid 5 M4 31.36 dBV/m	Grid 6 M4 31.15 dBV/m
Grid 7 M4 30.75 dBV/m	Grid 8 M4 31.32 dBV/m	Grid 9 M4 31.03 dBV/m

Cursor:

Total = 31.36 dBV/m

E Category: M4

Location: -3.5, 5, 9.7 mm



0 dB = 37.00 V/m = 31.36 dBV/m

14 HAC RF CDMA2000 BC10_1xRTT, RC1 SO3, 18th Rate_Ch580_E

Communication System: UID 10295 - AAB, CDMA2000, RC1, SO3, 1/8th Rate 25 fr.; Frequency: 820.5 MHz; Duty Cycle: 1:8.3

Medium: Air Medium parameters used: $\sigma = 0$ S/m, $\epsilon_r = 1$; $\rho = 0$ kg/m³

Ambient Temperature : 23.3 °C

DASY5 Configuration:

- Probe: ER3DV6 - SN2476; ConvF(1, 1, 1); Calibrated: 2016.11.23;
- Sensor-Surface: (Fix Surface)
- Electronics: DAE4 Sn1326; Calibrated: 2017.9.15
- Phantom: HAC Test Arch with AMCC; Type: SD HAC P01 BA;
- Measurement SW: DASY52, Version 52.8 (8); SEMCAD X Version 14.6.10 (7331)

Ch580/Hearing Aid Compatibility Test (101x101x1): Interpolated grid: dx=0.5000 mm, dy=0.5000 mm

Device Reference Point: 0, 0, -6.3 mm

Reference Value = 34.07 V/m; Power Drift = 0.08 dB

Applied MIF = 3.26 dB

RF audio interference level = 31.40 dBV/m

Emission category: M4

MIF scaled E-field

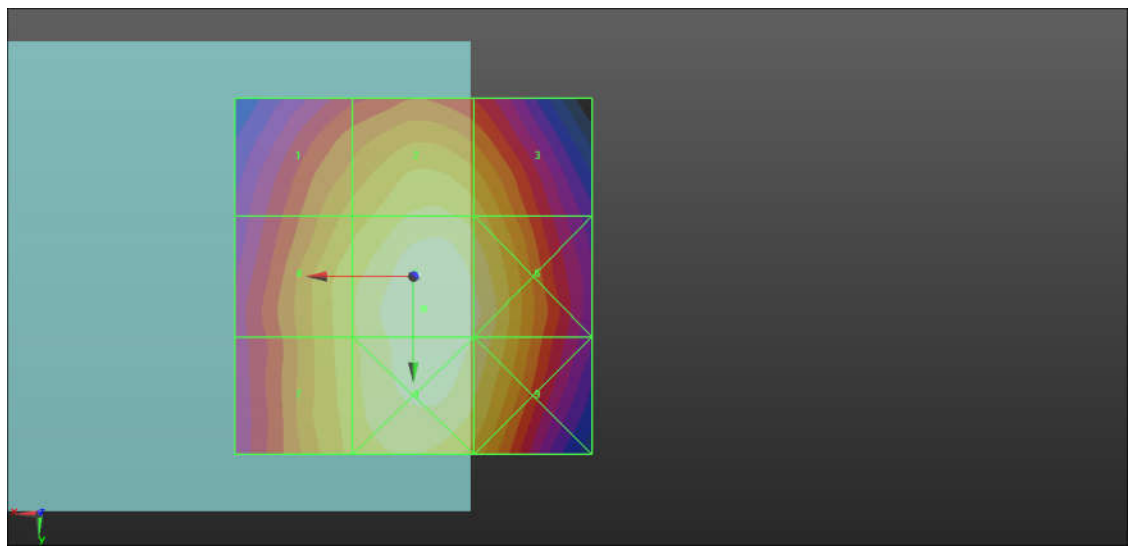
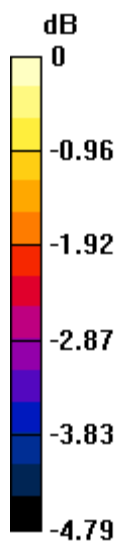
Grid 1 M4 30.27 dBV/m	Grid 2 M4 30.85 dBV/m	Grid 3 M4 30.62 dBV/m
Grid 4 M4 30.73 dBV/m	Grid 5 M4 31.4 dBV/m	Grid 6 M4 31.15 dBV/m
Grid 7 M4 30.7 dBV/m	Grid 8 M4 31.33 dBV/m	Grid 9 M4 31.05 dBV/m

Cursor:

Total = 31.40 dBV/m

E Category: M4

Location: -1.5, 4.5, 9.7 mm



0 dB = 37.14 V/m = 31.40 dBV/m

15 HAC RF CDMA2000 BC10_1xRTT, RC1 SO3, 18th Rate_Ch684_E

Communication System: UID 10295 - AAB, CDMA2000, RC1, SO3, 1/8th Rate 25 fr.; Frequency: 823.1 MHz; Duty Cycle: 1:8.3

Medium: Air Medium parameters used: $\sigma = 0$ S/m, $\epsilon_r = 1$; $\rho = 0$ kg/m³

Ambient Temperature : 23.3 °C;

DASY5 Configuration:

- Probe: ER3DV6 - SN2476; ConvF(1, 1, 1); Calibrated: 2016.11.23;
- Sensor-Surface: (Fix Surface)
- Electronics: DAE4 Sn1326; Calibrated: 2017.9.15
- Phantom: HAC Test Arch with AMCC; Type: SD HAC P01 BA;
- Measurement SW: DASY52, Version 52.8 (8); SEMCAD X Version 14.6.10 (7331)

Ch684/Hearing Aid Compatibility Test (101x101x1): Interpolated grid: dx=0.5000 mm, dy=0.5000 mm

Device Reference Point: 0, 0, -6.3 mm

Reference Value = 34.90 V/m; Power Drift = -0.11 dB

Applied MIF = 3.26 dB

RF audio interference level = 31.51 dBV/m

Emission category: M4

MIF scaled E-field

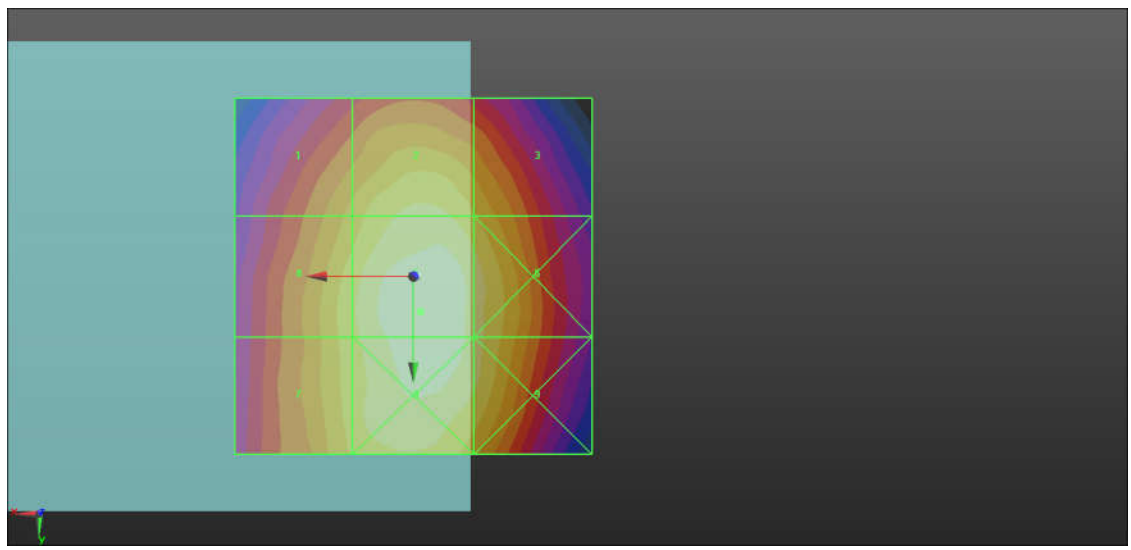
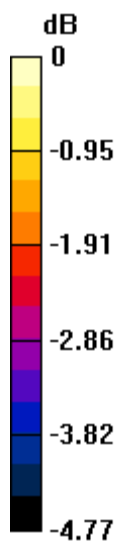
Grid 1 M4 30.38 dBV/m	Grid 2 M4 30.98 dBV/m	Grid 3 M4 30.6 dBV/m
Grid 4 M4 30.83 dBV/m	Grid 5 M4 31.51 dBV/m	Grid 6 M4 31.07 dBV/m
Grid 7 M4 30.78 dBV/m	Grid 8 M4 31.45 dBV/m	Grid 9 M4 31.05 dBV/m

Cursor:

Total = 31.51 dBV/m

E Category: M4

Location: -1, 5, 9.7 mm



0 dB = 37.64 V/m = 31.51 dBV/m

16 HAC RF TDD LTE 41_Voice,QPSK,1RB,99Offset_Ch39750_E

Communication System: UID 0, LTE-TDD(SC-FDMA,1RB,20MHz,QPSK) (0); Frequency: 2506 MHz;Duty Cycle: 1:8.3

Medium: Air Medium parameters used: $\sigma = 0$ S/m, $\epsilon_r = 1$; $\rho = 0$ kg/m³

Ambient Temperature : 23.3 °C

DASY5 Configuration:

- Probe: ER3DV6 - SN2476; ConvF(1, 1, 1); Calibrated: 2017.1.25;
- Sensor-Surface: (Fix Surface)
- Electronics: DAE4 Sn1326; Calibrated: 2017.9.15
- Phantom: HAC Test Arch with AMCC; Type: SD HAC P01 BA;
- Measurement SW: DASY52, Version 52.8 (8); SEMCAD X Version 14.6.10 (7331)

Ch39750/Hearing Aid Compatibility Test (101x101x1): Interpolated grid: dx=0.5000 mm, dy=0.5000 mm

Device Reference Point: 0, 0, -6.3 mm

Reference Value = 18.04 V/m; Power Drift = -0.06 dB

Applied MIF = -1.62 dB

RF audio interference level = 23.80 dBV/m

Emission category: M4

MIF scaled E-field

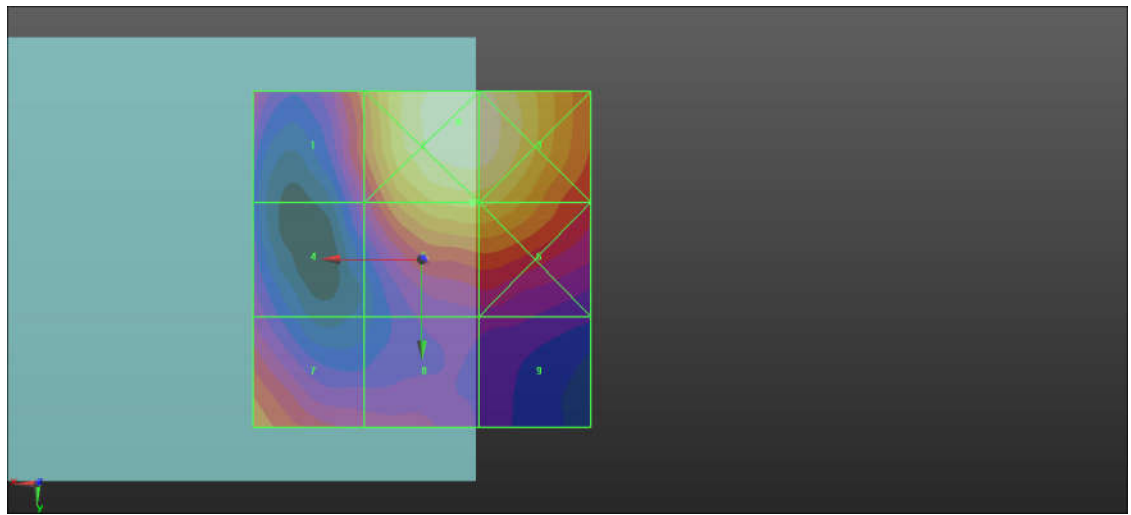
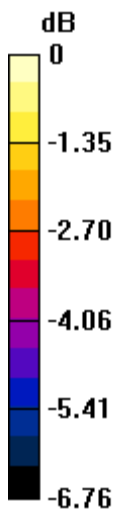
Grid 1 M4 22.61 dBV/m	Grid 2 M4 24.98 dBV/m	Grid 3 M4 24.83 dBV/m
Grid 4 M4 21.09 dBV/m	Grid 5 M4 23.79 dBV/m	Grid 6 M4 23.78 dBV/m
Grid 7 M4 22.65 dBV/m	Grid 8 M4 21.27 dBV/m	Grid 9 M4 20.74 dBV/m

Cursor:

Total = 24.98 dBV/m

E Category: M4

Location: -5.5, -20.5, 9.7 mm



0 dB = 17.74 V/m = 24.98 dBV/m

17 HAC RF TDD LTE 41_Voice,QPSK,1RB,99Offset_Ch40185_E

Communication System: UID 0, LTE-TDD(SC-FDMA,1RB,20MHz,QPSK) (0); Frequency: 2549.5 MHz;Duty Cycle: 1:8.3

Medium: Air Medium parameters used: $\sigma = 0$ S/m, $\epsilon_r = 1$; $\rho = 0$ kg/m³

Ambient Temperature : 23.3 °C

DASY5 Configuration:

- Probe: ER3DV6 - SN2476; ConvF(1, 1, 1); Calibrated: 2017.1.25;
- Sensor-Surface: (Fix Surface)
- Electronics: DAE4 Sn1326; Calibrated: 2017.9.15
- Phantom: HAC Test Arch with AMCC; Type: SD HAC P01 BA;
- Measurement SW: DASY52, Version 52.8 (8); SEMCAD X Version 14.6.10 (7331)

Ch40185/Hearing Aid Compatibility Test (101x101x1): Interpolated grid: dx=0.5000 mm, dy=0.5000 mm

Device Reference Point: 0, 0, -6.3 mm

Reference Value = 17.98 V/m; Power Drift = -0.01 dB

Applied MIF = -1.62 dB

RF audio interference level = 23.95 dBV/m

Emission category: M4

MIF scaled E-field

Grid 1 M4 22.38 dBV/m	Grid 2 M4 24.89 dBV/m	Grid 3 M4 24.89 dBV/m
Grid 4 M4 21.61 dBV/m	Grid 5 M4 23.95 dBV/m	Grid 6 M4 23.95 dBV/m
Grid 7 M4 22.99 dBV/m	Grid 8 M4 21.31 dBV/m	Grid 9 M4 21.14 dBV/m

Cursor:

Total = 24.89 dBV/m

E Category: M4

Location: -7.5, -21, 9.7 mm

18 HAC RF TDD LTE 41_Voice,QPSK,1RB,99Offset_Ch40620_E

Communication System: UID 0, LTE-TDD(SC-FDMA,1RB,20MHz,QPSK) (0); Frequency: 2593 MHz;Duty Cycle: 1:8.3

Medium: Air Medium parameters used: $\sigma = 0$ S/m, $\epsilon_r = 1$; $\rho = 0$ kg/m³

Ambient Temperature : 23.3 °C

DASY5 Configuration:

- Probe: ER3DV6 - SN2476; ConvF(1, 1, 1); Calibrated: 2017.1.25;
- Sensor-Surface: (Fix Surface)
- Electronics: DAE4 Sn1326; Calibrated: 2017.9.15
- Phantom: HAC Test Arch with AMCC; Type: SD HAC P01 BA;
- Measurement SW: DASY52, Version 52.8 (8); SEMCAD X Version 14.6.10 (7331)

Ch40620/Hearing Aid Compatibility Test (101x101x1): Interpolated grid: dx=0.5000 mm, dy=0.5000 mm

Device Reference Point: 0, 0, -6.3 mm

Reference Value = 11.70 V/m; Power Drift = -0.03 dB

Applied MIF = -1.62 dB

RF audio interference level = 22.13 dBV/m

Emission category: M4

MIF scaled E-field

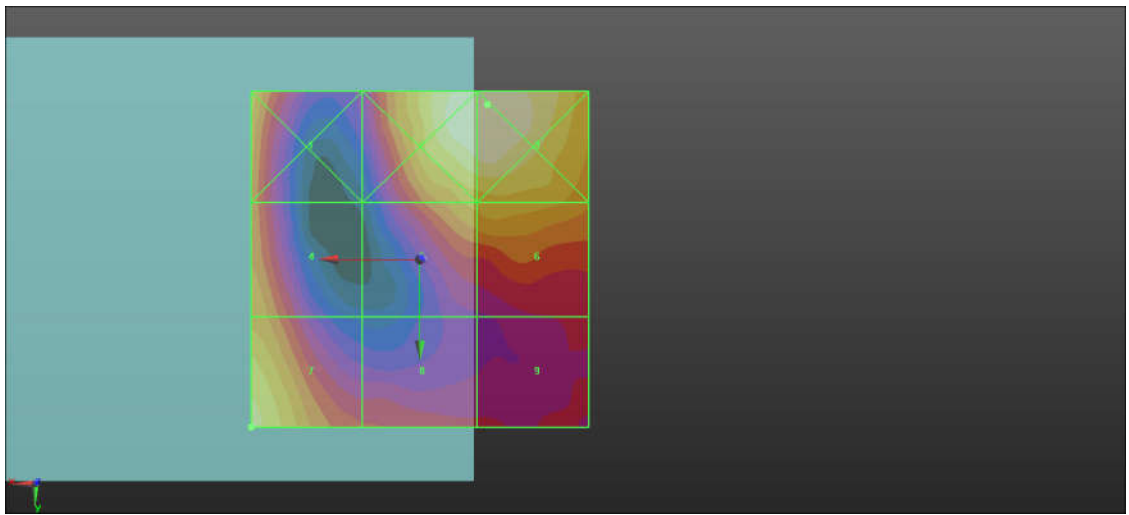
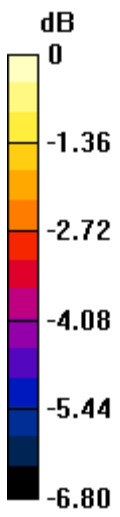
Grid 1 M4 21.42 dBV/m	Grid 2 M4 22.78 dBV/m	Grid 3 M4 22.8 dBV/m
Grid 4 M4 20.97 dBV/m	Grid 5 M4 21.18 dBV/m	Grid 6 M4 21.31 dBV/m
Grid 7 M4 22.13 dBV/m	Grid 8 M4 19.71 dBV/m	Grid 9 M4 19.42 dBV/m

Cursor:

Total = 22.80 dBV/m

E Category: M4

Location: -10, -23, 9.7 mm



0 dB = 13.80 V/m = 22.80 dBV/m

19 HAC RF TDD LTE 41_Voice,QPSK,1RB,99Offset_Ch41055_E

Communication System: UID 0, LTE-TDD(SC-FDMA,1RB,20MHz,QPSK) (0); Frequency: 2636.5 MHz;Duty Cycle: 1:8.3

Medium: Air Medium parameters used: $\sigma = 0$ S/m, $\epsilon_r = 1$; $\rho = 0$ kg/m³

Ambient Temperature : 23.3 °C

DASY5 Configuration:

- Probe: ER3DV6 - SN2476; ConvF(1, 1, 1); Calibrated: 2017.1.25;
- Sensor-Surface: (Fix Surface)
- Electronics: DAE4 Sn1326; Calibrated: 2017.9.15
- Phantom: HAC Test Arch with AMCC; Type: SD HAC P01 BA;
- Measurement SW: DASY52, Version 52.8 (8); SEMCAD X Version 14.6.10 (7331)

Ch41055/Hearing Aid Compatibility Test (101x101x1): Interpolated grid: dx=0.5000 mm, dy=0.5000 mm

Device Reference Point: 0, 0, -6.3 mm

Reference Value = 9.788 V/m; Power Drift = -0.07 dB

Applied MIF = -1.62 dB

RF audio interference level = 21.71 dBV/m

Emission category: M4

MIF scaled E-field

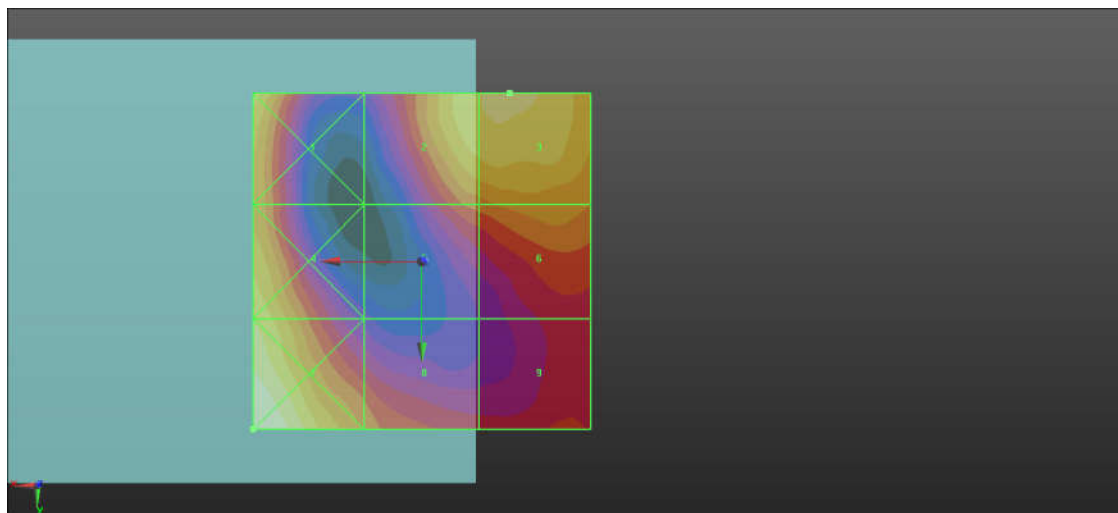
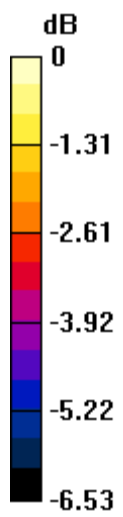
Grid 1 M4 21.44 dBV/m	Grid 2 M4 21.56 dBV/m	Grid 3 M4 21.71 dBV/m
Grid 4 M4 21.56 dBV/m	Grid 5 M4 20.07 dBV/m	Grid 6 M4 20.52 dBV/m
Grid 7 M4 22.44 dBV/m	Grid 8 M4 20.22 dBV/m	Grid 9 M4 19.47 dBV/m

Cursor:

Total = 22.44 dBV/m

E Category: M4

Location: 25, 25, 9.7 mm



0 dB = 13.24 V/m = 22.44 dBV/m

20 HAC RF TDD LTE 41_Voice,QPSK,1RB,99Offset_Ch41490_E

Communication System: UID 0, LTE-TDD(SC-FDMA,1RB,20MHz,QPSK) (0); Frequency: 2680 MHz;Duty Cycle: 1:8.3

Medium: Air Medium parameters used: $\sigma = 0$ S/m, $\epsilon_r = 1$; $\rho = 0$ kg/m³

Ambient Temperature : 23.3 °C

DASY5 Configuration:

- Probe: ER3DV6 - SN2476; ConvF(1, 1, 1); Calibrated: 2017.1.25;
- Sensor-Surface: (Fix Surface)
- Electronics: DAE4 Sn1326; Calibrated: 2017.9.15
- Phantom: HAC Test Arch with AMCC; Type: SD HAC P01 BA;
- Measurement SW: DASY52, Version 52.8 (8); SEMCAD X Version 14.6.10 (7331)

Ch41490/Hearing Aid Compatibility Test (101x101x1): Interpolated grid: dx=0.5000 mm, dy=0.5000 mm

Device Reference Point: 0, 0, -6.3 mm

Reference Value = 9.174 V/m; Power Drift = 0.06 dB

Applied MIF = -1.62 dB

RF audio interference level = 19.28 dBV/m

Emission category: M4

MIF scaled E-field

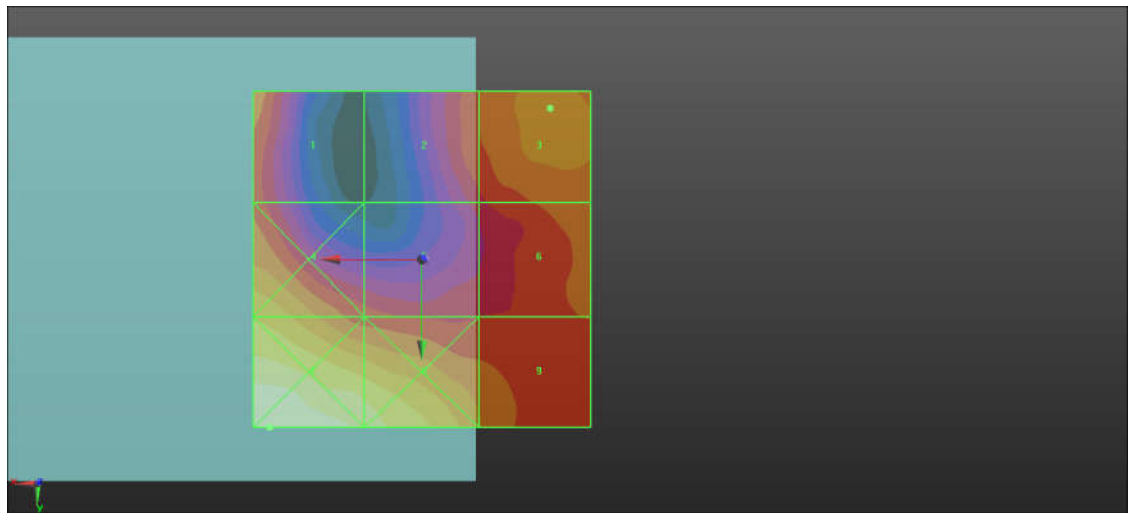
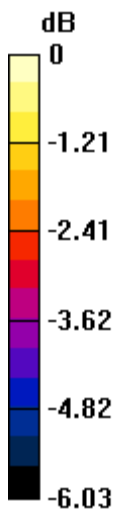
Grid 1 M4 19.22 dBV/m	Grid 2 M4 18.8 dBV/m	Grid 3 M4 19.28 dBV/m
Grid 4 M4 19.95 dBV/m	Grid 5 M4 18.59 dBV/m	Grid 6 M4 18.99 dBV/m
Grid 7 M4 21.18 dBV/m	Grid 8 M4 20.65 dBV/m	Grid 9 M4 19.22 dBV/m

Cursor:

Total = 21.18 dBV/m

E Category: M4

Location: 22.5, 25, 9.7 mm



0 dB = 11.46 V/m = 21.18 dBV/m

21 HAC RF TDD LTE 41_Voice,16QAM,1RB,99Offset_Ch39750_E

Communication System: UID 0, LTE-TDD(SC-FDMA,1RB,20MHz,QPSK) (0); Frequency: 2506 MHz;Duty Cycle: 1:8.3

Medium: Air Medium parameters used: $\sigma = 0$ S/m, $\epsilon_r = 1$; $\rho = 0$ kg/m³

Ambient Temperature : 23.3 °C

DASY5 Configuration:

- Probe: ER3DV6 - SN2476; ConvF(1, 1, 1); Calibrated: 2017.1.25;
- Sensor-Surface: (Fix Surface)
- Electronics: DAE4 Sn1326; Calibrated: 2017.9.15
- Phantom: HAC Test Arch with AMCC; Type: SD HAC P01 BA;
- Measurement SW: DASY52, Version 52.8 (8); SEMCAD X Version 14.6.10 (7331)

Ch39750/Hearing Aid Compatibility Test (101x101x1): Interpolated grid: dx=0.5000 mm, dy=0.5000 mm

Device Reference Point: 0, 0, -6.3 mm

Reference Value = 15.99 V/m; Power Drift = 0.08 dB

Applied MIF = -1.62 dB

RF audio interference level = 23.13 dBV/m

Emission category: M4

MIF scaled E-field

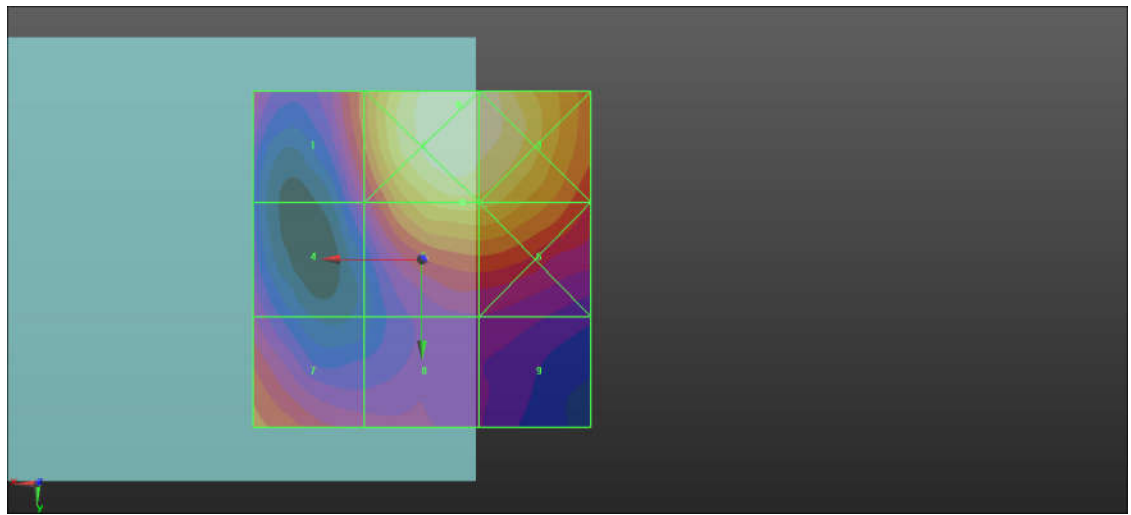
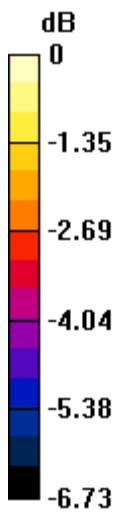
Grid 1 M4 21.81 dBV/m	Grid 2 M4 24.18 dBV/m	Grid 3 M4 24.08 dBV/m
Grid 4 M4 20.31 dBV/m	Grid 5 M4 23.13 dBV/m	Grid 6 M4 23.06 dBV/m
Grid 7 M4 21.66 dBV/m	Grid 8 M4 20.5 dBV/m	Grid 9 M4 20.13 dBV/m

Cursor:

Total = 24.18 dBV/m

E Category: M4

Location: -5.5, -23, 9.7 mm



0 dB = 16.19 V/m = 24.18 dBV/m

22 HAC RF TDD LTE 41_Voice,16QAM,1RB,99Offset_Ch40185_E

Communication System: UID 0, LTE-TDD(SC-FDMA,1RB,20MHz,QPSK) (0); Frequency: 2549.5 MHz;Duty Cycle: 1:8.3

Medium: Air Medium parameters used: $\sigma = 0$ S/m, $\epsilon_r = 1$; $\rho = 0$ kg/m³

Ambient Temperature : 23.3 °C

DASY5 Configuration:

- Probe: ER3DV6 - SN2476; ConvF(1, 1, 1); Calibrated: 2017.1.25;
- Sensor-Surface: (Fix Surface)
- Electronics: DAE4 Sn1326; Calibrated: 2017.9.15
- Phantom: HAC Test Arch with AMCC; Type: SD HAC P01 BA;
- Measurement SW: DASY52, Version 52.8 (8); SEMCAD X Version 14.6.10 (7331)

Ch40185/Hearing Aid Compatibility Test (101x101x1): Interpolated grid: dx=0.5000 mm, dy=0.5000 mm

Device Reference Point: 0, 0, -6.3 mm

Reference Value = 16.31 V/m; Power Drift = -0.08 dB

Applied MIF = -1.62 dB

RF audio interference level = 23.03 dBV/m

Emission category: M4

MIF scaled E-field

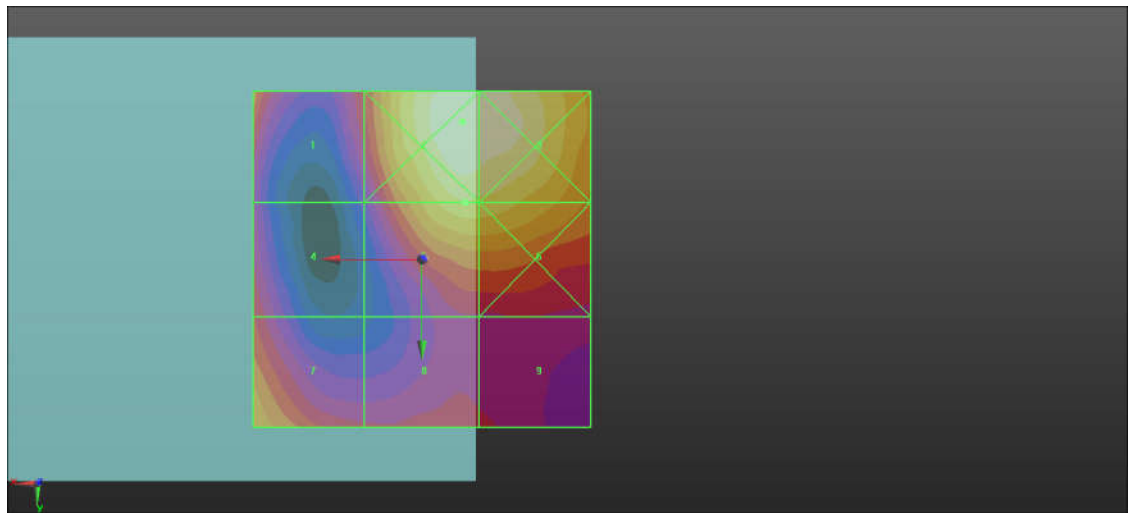
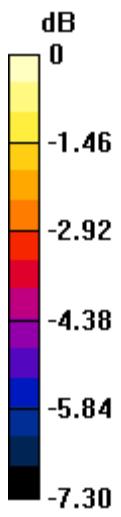
Grid 1 M4 21.54 dBV/m	Grid 2 M4 24.04 dBV/m	Grid 3 M4 23.92 dBV/m
Grid 4 M4 20.73 dBV/m	Grid 5 M4 23.03 dBV/m	Grid 6 M4 22.96 dBV/m
Grid 7 M4 22.04 dBV/m	Grid 8 M4 20.4 dBV/m	Grid 9 M4 20.27 dBV/m

Cursor:

Total = 24.04 dBV/m

E Category: M4

Location: -6, -20.5, 9.7 mm



0 dB = 15.93 V/m = 24.04 dBV/m

23 HAC RF TDD LTE 41_Voice,16QAM,1RB,99Offset_Ch40620_E

Communication System: UID 0, LTE-TDD(SC-FDMA,1RB,20MHz,QPSK) (0); Frequency: 2593 MHz;Duty Cycle: 1:8.3

Medium: Air Medium parameters used: $\sigma = 0$ S/m, $\epsilon_r = 1$; $\rho = 0$ kg/m³

Ambient Temperature : 23.3 °C

DASY5 Configuration:

- Probe: ER3DV6 - SN2476; ConvF(1, 1, 1); Calibrated: 2017.1.25;
- Sensor-Surface: (Fix Surface)
- Electronics: DAE4 Sn1326; Calibrated: 2017.9.15
- Phantom: HAC Test Arch with AMCC; Type: SD HAC P01 BA;
- Measurement SW: DASY52, Version 52.8 (8); SEMCAD X Version 14.6.10 (7331)

Ch40620/Hearing Aid Compatibility Test (101x101x1): Interpolated grid: dx=0.5000 mm, dy=0.5000 mm

Device Reference Point: 0, 0, -6.3 mm

Reference Value = 10.48 V/m; Power Drift = 0.05 dB

Applied MIF = -1.62 dB

RF audio interference level = 22.74 dBV/m

Emission category: M4

MIF scaled E-field

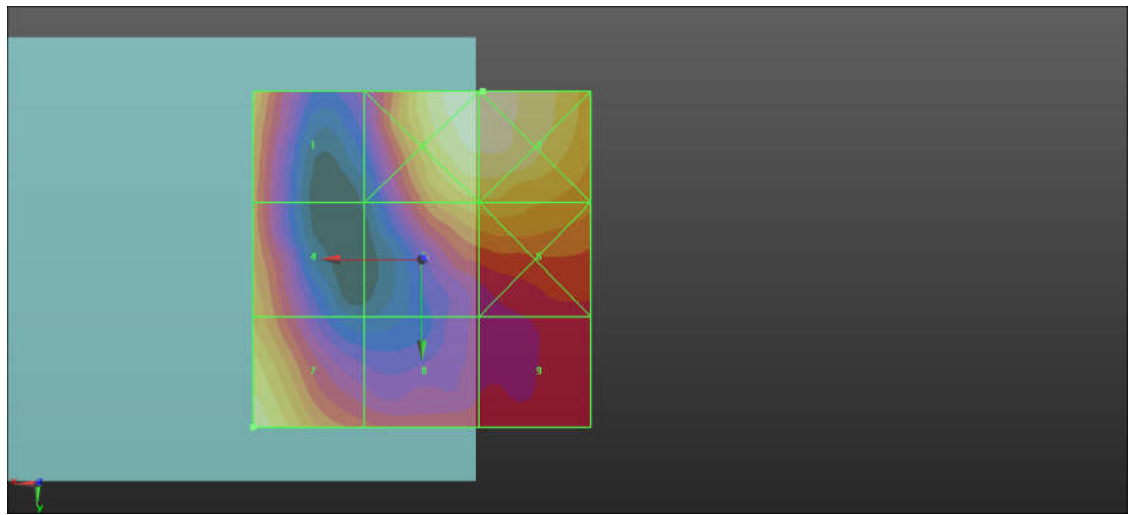
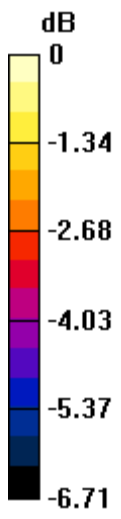
Grid 1 M4 21.77 dBV/m	Grid 2 M4 23.22 dBV/m	Grid 3 M4 23.22 dBV/m
Grid 4 M4 21.35 dBV/m	Grid 5 M4 21.76 dBV/m	Grid 6 M4 21.8 dBV/m
Grid 7 M4 22.74 dBV/m	Grid 8 M4 20.35 dBV/m	Grid 9 M4 20.06 dBV/m

Cursor:

Total = 23.22 dBV/m

E Category: M4

Location: -9, -25, 9.7 mm



0 dB = 14.49 V/m = 23.22 dBV/m

24 HAC RF TDD LTE 41_Voice,16QAM,1RB,99Offset_Ch41055_E

Communication System: UID 0, LTE-TDD(SC-FDMA,1RB,20MHz,QPSK) (0); Frequency: 2636.5 MHz;Duty Cycle: 1:8.3

Medium: Air Medium parameters used: $\sigma = 0$ S/m, $\epsilon_r = 1$; $\rho = 0$ kg/m³

Ambient Temperature : 23.3 °C

DASY5 Configuration:

- Probe: ER3DV6 - SN2476; ConvF(1, 1, 1); Calibrated: 2017.1.25;
- Sensor-Surface: (Fix Surface)
- Electronics: DAE4 Sn1326; Calibrated: 2017.9.15
- Phantom: HAC Test Arch with AMCC; Type: SD HAC P01 BA;
- Measurement SW: DASY52, Version 52.8 (8); SEMCAD X Version 14.6.10 (7331)

Ch41055/Hearing Aid Compatibility Test (101x101x1): Interpolated grid: dx=0.5000 mm, dy=0.5000 mm

Device Reference Point: 0, 0, -6.3 mm

Reference Value = 12.40 V/m; Power Drift = -0.06 dB

Applied MIF = -1.62 dB

RF audio interference level = 20.98 dBV/m

Emission category: M4

MIF scaled E-field

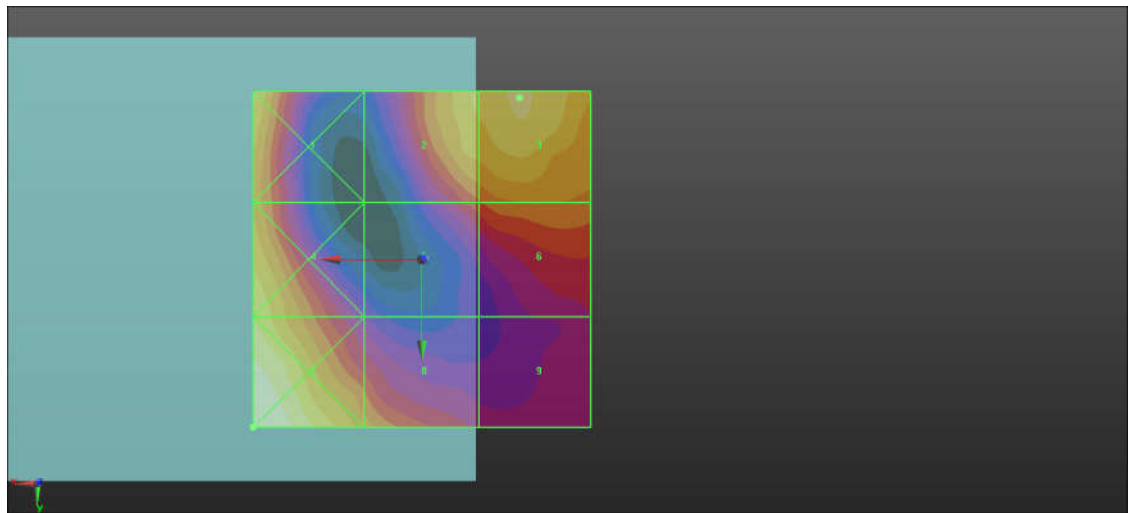
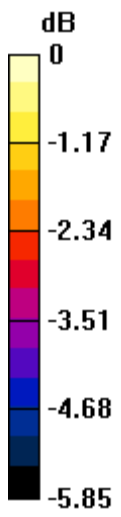
Grid 1 M4 20.75 dBV/m	Grid 2 M4 20.67 dBV/m	Grid 3 M4 20.98 dBV/m
Grid 4 M4 20.94 dBV/m	Grid 5 M4 19.34 dBV/m	Grid 6 M4 19.81 dBV/m
Grid 7 M4 21.72 dBV/m	Grid 8 M4 20.02 dBV/m	Grid 9 M4 18.62 dBV/m

Cursor:

Total = 21.72 dBV/m

E Category: M4

Location: 25, 25, 9.7 mm



0 dB = 12.19 V/m = 21.72 dBV/m

25 HAC RF TDD LTE 41_Voice,16QAM,1RB,99Offset_Ch41490_E

Communication System: UID 0, LTE-TDD(SC-FDMA,1RB,20MHz,QPSK) (0); Frequency: 2680 MHz;Duty Cycle: 1:8.3

Medium: Air Medium parameters used: $\sigma = 0$ S/m, $\epsilon_r = 1$; $\rho = 0$ kg/m³

Ambient Temperature : 23.3 °C

DASY5 Configuration:

- Probe: ER3DV6 - SN2476; ConvF(1, 1, 1); Calibrated: 2017.1.25;
- Sensor-Surface: (Fix Surface)
- Electronics: DAE4 Sn1326; Calibrated: 2017.9.15
- Phantom: HAC Test Arch with AMCC; Type: SD HAC P01 BA;
- Measurement SW: DASY52, Version 52.8 (8); SEMCAD X Version 14.6.10 (7331)

Ch41490/Hearing Aid Compatibility Test (101x101x1): Interpolated grid: dx=0.5000 mm, dy=0.5000 mm

Device Reference Point: 0, 0, -6.3 mm

Reference Value = 7.082 V/m; Power Drift = 0.04 dB

Applied MIF = -1.62 dB

RF audio interference level = 18.45 dBV/m

Emission category: M4

MIF scaled E-field

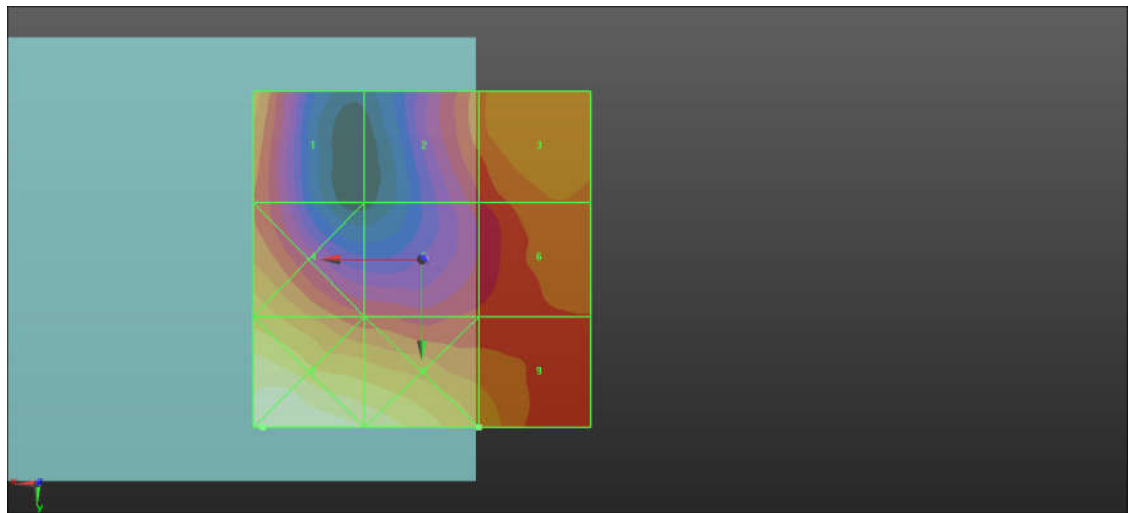
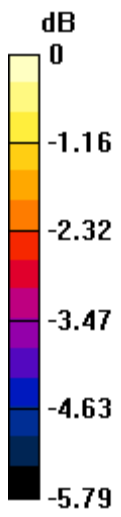
Grid 1 M4 18.4 dBV/m	Grid 2 M4 17.97 dBV/m	Grid 3 M4 18.44 dBV/m
Grid 4 M4 18.72 dBV/m	Grid 5 M4 17.41 dBV/m	Grid 6 M4 18.06 dBV/m
Grid 7 M4 20.01 dBV/m	Grid 8 M4 19.61 dBV/m	Grid 9 M4 18.45 dBV/m

Cursor:

Total = 20.01 dBV/m

E Category: M4

Location: 23.5, 25, 9.7 mm



0 dB = 10.01 V/m = 20.01 dBV/m



Appendix C. DASY Calibration Certificate

The DASY calibration certificates are shown as follows.



Accredited by the Swiss Accreditation Service (SAS)
The Swiss Accreditation Service is one of the signatories to the EA
Multilateral Agreement for the recognition of calibration certificates

Accreditation No.: **SCS 0108**

Client **Sporton-KS (Auden)**

Certificate No: **CD835V3-1171_Mar17**

CALIBRATION CERTIFICATE

Object **CD835V3 - SN: 1171**

Calibration procedure(s) **QA CAL-20.v6
Calibration procedure for dipoles in air**

Calibration date: **March 20, 2017**

This calibration certificate documents the traceability to national standards, which realize the physical units of measurements (SI).
The measurements and the uncertainties with confidence probability are given on the following pages and are part of the certificate.

All calibrations have been conducted in the closed laboratory facility: environment temperature (22 ± 3)°C and humidity < 70%.

Calibration Equipment used (M&TE critical for calibration)

Primary Standards	ID #	Cal Date (Certificate No.)	Scheduled Calibration
Power meter NRP	SN: 104778	06-Apr-16 (No. 217-02288/02289)	Apr-17
Power sensor NRP-Z91	SN: 103244	06-Apr-16 (No. 217-02288)	Apr-17
Power sensor NRP-Z91	SN: 103245	06-Apr-16 (No. 217-02289)	Apr-17
Reference 20 dB Attenuator	SN: 5058 (20k)	05-Apr-16 (No. 217-02292)	Apr-17
Type-N mismatch combination	SN: 5047.2 / 06327	05-Apr-16 (No. 217-02295)	Apr-17
Probe ER3DV6	SN: 2336	30-Dec-16 (No. ER3-2336_Dec16)	Dec-17
Probe H3DV6	SN: 6065	30-Dec-16 (No. H3-6065_Dec16)	Dec-17
DAE4	SN: 781	02-Sep-16 (No. DAE4-781_Sep16)	Sep-17

Secondary Standards	ID #	Check Date (in house)	Scheduled Check
Power meter Agilent 4419B	SN: GB42420191	09-Oct-09 (in house check Sep-14)	In house check: Oct-17
Power sensor HP E4412A	SN: US38485102	05-Jan-10 (in house check Sep-14)	In house check: Oct-17
Power sensor HP 8482A	SN: US37295597	09-Oct-09 (in house check Sep-14)	In house check: Oct-17
RF generator R&S SMT-06	SN: 832283/011	27-Aug-12 (in house check Oct-15)	In house check: Oct-17
Network Analyzer HP 8753E	SN: US37390585	18-Oct-01 (in house check Oct-16)	In house check: Oct-17

	Name	Function	Signature
Calibrated by:	Johannes Kurikka	Laboratory Technician	
Approved by:	Katja Pokovic	Technical Manager	

Issued: March 20, 2017

This calibration certificate shall not be reproduced except in full without written approval of the laboratory.



Accredited by the Swiss Accreditation Service (SAS)

The Swiss Accreditation Service is one of the signatories to the EA Multilateral Agreement for the recognition of calibration certificates

Accreditation No.: **SCS 0108**

References

- [1] ANSI-C63.19-2011
American National Standard, Methods of Measurement of Compatibility between Wireless Communications Devices and Hearing Aids.

Methods Applied and Interpretation of Parameters:

- *Coordinate System:* y-axis is in the direction of the dipole arms. z-axis is from the basis of the antenna (mounted on the table) towards its feed point between the two dipole arms. x-axis is normal to the other axes. In coincidence with the standards [1], the measurement planes (probe sensor center) are selected to be at a distance of 15 mm above the top metal edge of the dipole arms.
- *Measurement Conditions:* Further details are available from the hardcopies at the end of the certificate. All figures stated in the certificate are valid at the frequency indicated. The forward power to the dipole connector is set with a calibrated power meter connected and monitored with an auxiliary power meter connected to a directional coupler. While the dipole under test is connected, the forward power is adjusted to the same level.
- *Antenna Positioning:* The dipole is mounted on a HAC Test Arch phantom using the matching dipole positioner with the arms horizontal and the feeding cable coming from the floor. The measurements are performed in a shielded room with absorbers around the setup to reduce the reflections. It is verified before the mounting of the dipole under the Test Arch phantom, that its arms are perfectly in a line. It is installed on the HAC dipole positioner with its arms parallel below the dielectric reference wire and able to move elastically in vertical direction without changing its relative position to the top center of the Test Arch phantom. The vertical distance to the probe is adjusted after dipole mounting with a DASY5 Surface Check job. Before the measurement, the distance between phantom surface and probe tip is verified. The proper measurement distance is selected by choosing the matching section of the HAC Test Arch phantom with the proper device reference point (upper surface of the dipole) and the matching grid reference point (tip of the probe) considering the probe sensor offset. The vertical distance to the probe is essential for the accuracy.
- *Feed Point Impedance and Return Loss:* These parameters are measured using a HP 8753E Vector Network Analyzer. The impedance is specified at the SMA connector of the dipole. The influence of reflections was eliminated by applying the averaging function while moving the dipole in the air, at least 70cm away from any obstacles.
- *E-field distribution:* E field is measured in the x-y-plane with an isotropic ER3D-field probe with 100 mW forward power to the antenna feed point. In accordance with [1], the scan area is 20mm wide, its length exceeds the dipole arm length (180 or 90mm). The sensor center is 15 mm (in z) above the metal top of the dipole arms. Two 3D maxima are available near the end of the dipole arms. Assuming the dipole arms are perfectly in one line, the average of these two maxima (in subgrid 2 and subgrid 8) is determined to compensate for any non-parallelity to the measurement plane as well as the sensor displacement. The E-field value stated as calibration value represents the maximum of the interpolated 3D-E-field, in the plane above the dipole surface.

The reported uncertainty of measurement is stated as the standard uncertainty of measurement multiplied by the coverage factor $k=2$, which for a normal distribution corresponds to a coverage probability of approximately 95%.

Measurement Conditions

DASY system configuration, as far as not given on page 1.

DASY Version	DASY5	V52.8.8
Phantom	HAC Test Arch	
Distance Dipole Top - Probe Center	15 mm	
Scan resolution	dx, dy = 5 mm	
Frequency	835 MHz \pm 1 MHz	
Input power drift	< 0.05 dB	

Maximum Field values at 835 MHz

E-field 15 mm above dipole surface	condition	Interpolated maximum
Maximum measured above high end	100 mW input power	107.3 V/m = 40.61 dBV/m
Maximum measured above low end	100 mW input power	104.3 V/m = 40.37 dBV/m
Averaged maximum above arm	100 mW input power	105.8 V/m \pm 12.8 % (k=2)

Appendix (Additional assessments outside the scope of SCS 0108)

Antenna Parameters

Frequency	Return Loss	Impedance
800 MHz	16.9 dB	40.2 Ω - 8.4 j Ω
835 MHz	26.3 dB	52.3 Ω + 4.4 j Ω
900 MHz	16.2 dB	51.0 Ω - 15.7 j Ω
950 MHz	22.5 dB	48.3 Ω + 7.2 j Ω
960 MHz	16.7 dB	58.5 Ω + 13.6 j Ω

3.2 Antenna Design and Handling

The calibration dipole has a symmetric geometry with a built-in two stub matching network, which leads to the enhanced bandwidth.

The dipole is built of standard semirigid coaxial cable. The internal matching line is open ended. The antenna is therefore open for DC signals.

Do not apply force to dipole arms, as they are liable to bend. The soldered connections near the feedpoint may be damaged. After excessive mechanical stress or overheating, check the impedance characteristics to ensure that the internal matching network is not affected.

After long term use with 40W radiated power, only a slight warming of the dipole near the feedpoint can be measured.

Impedance Measurement Plot

