



# FCC HAC (RF Emission) Test Report

**Report No.** : SA121029C13  
**Applicant** : Sonim Technologies, Inc.  
**Address** : 1825 S Grant St, Suite 200, San Mateo, CA 94402 United States  
**Product** : GSM/WCDMA Mobile Phone  
**FCC ID** : WYPP35B008AA  
**Brand** : Sonim  
**Model No.** : Sonim XP1520-A-R1, Sonim XP1520-A-R2, Sonim XP1520-A-R3 (P35B008AA)  
**Standards** : FCC 47 CFR Part 20.19  
ANSI C63.19-2011  
**Date of Testing** : Jan. 14, 2013  
**Summary M-Rating** : M3

**CERTIFICATION:** The above equipment have been tested by **Bureau Veritas Consumer Products Services (H.K.) Ltd., Taoyuan Branch - Taiwan HwaYa Lab**, and found compliance with the requirement of the above standards. The test record, data evaluation & Equipment Under Test (EUT) configurations represented herein are true and accurate accounts of the measurements of the sample's HAC characteristics under the conditions specified in this report. It should not be reproduced except in full, without the written approval of our laboratory. The client should not use it to claim product certification, approval, or endorsement by TAF or any government agencies.

**Prepared By :** Evonne Liu  
Evonne Liu / Specialist

**Approved By :** Roy Wu  
Roy Wu / Manager



This report is for your exclusive use. Any copying or replication of this report to or for any other person or entity, or use of our name or trademark, is permitted only with our prior written permission. This report sets forth our findings solely with respect to the test samples identified herein. The results set forth in this report are not indicative or representative of the quality or characteristics of the lot from which a test sample was taken or any similar or identical product unless specifically and expressly noted. Our report includes all of the tests requested by you and the results thereof based upon the information that you provided to us. You have 60 days from date of issuance of this report to notify us of any material error or omission caused by our negligence, provided, however, that such notice shall be in writing and shall specifically address the issue you wish to raise. A failure to raise such issue within the prescribed time shall constitute your unqualified acceptance of the completeness of this report, the tests conducted and the correctness of the report contents. Unless specific mention, the uncertainty of measurement has been explicitly taken into account to declare the compliance or non-compliance to the specification.



## Table of Contents

|   |    |
|---|----|
| Release Control Record .....                    | 3  |
| 1. Summary of Maximum M-Rating .....            | 4  |
| 2. Description of Equipment Under Test .....    | 5  |
| 3. HAC RF Emission Measurement System .....     | 6  |
| 3.1 SPEAG DASY System .....                     | 6  |
| 3.1.1 Robot.....                                | 7  |
| 3.1.2 Probes.....                               | 7  |
| 3.1.3 Data Acquisition Electronics (DAE) .....  | 7  |
| 3.1.4 Phantoms.....                             | 8  |
| 3.1.5 Device Holder.....                        | 8  |
| 3.1.6 RF Emission Calibration Dipoles.....      | 8  |
| 3.2 DASY System Verification.....               | 9  |
| 3.3 EUT Measurements Reference and Plane.....   | 10 |
| 3.4 HAC RF Emission Measurement Procedure.....  | 11 |
| 3.5 Modulation Interference Factor .....        | 13 |
| 4. HAC Measurement Evaluation.....              | 14 |
| 4.1 M-Rating Category .....                     | 14 |
| 4.2 EUT Configuration and Setting.....          | 14 |
| 4.3 System Verification.....                    | 14 |
| 4.4 Conducted Power Results.....                | 15 |
| 4.5 HAC RF Emission Testing Results .....       | 15 |
| 4.5.1 E-Field Emissions .....                   | 15 |
| 5. Calibration of Test Equipment.....           | 16 |
| 6. Measurement Uncertainty.....                 | 17 |
| 7. Information on the Testing Laboratories..... | 18 |

- Appendix A. Plots of System Verification
- Appendix B. Plots of HAC RF Emission Measurement
- Appendix C. Calibration Certificate for Probe and Dipole
- Appendix D. Photographs of EUT and Setup



## Release Control Record

| Issue No. | Reason for Change | Date Issued   |
|-----------|-------------------|---------------|
| R01       | Initial release   | Feb. 22, 2013 |
|           |                   |               |
|           |                   |               |



## 1. Summary of Maximum M-Rating

| Mode / Band   | Maximum RF Audio Interference Level (dBV/m) | M-Rating |
|---------------|---|----------|
| GSM850        | 40.49                                       | M3       |
| GSM1900       | 33.72                                       | M3       |
| WCDMA Band II | 5.20  | M4       |
| WCDMA Band V  | 7.92  | M4       |
| Summary       |   | M3       |

**Note:**

The HAC RF emission limit (**M-rating Category M3**) is specified in FCC 47 CFR part 20.19 and ANSI C63.19.



## 2. Description of Equipment Under Test

|  |  |
|--|--|
| EUT Type                                   | GSM/WCDMA Mobile Phone   |
| FCC ID                                     | WYPP35B008AA   |
| Brand Name                                 | Sonim  |
| Model Name                                 | Sonim XP1520-A-R1, Sonim XP1520-A-R2, Sonim XP1520-A-R3 (P35B008AA)                                    |
| HW Version                                 | A  |
| SW Version                                 | 11.0.2(SVN:01)   |
| Tx Frequency Bands<br>(Unit: MHz)          | GSM850 : 824 ~ 849<br>GSM1900 : 1850 ~ 1910<br>WCDMA Band II : 1850 ~ 1910<br>WCDMA Band V : 824 ~ 849 |
| Uplink Modulations                         | GSM : GMSK<br>WCDMA : QPSK   |
| Maximum AVG Conducted Power<br>(Unit: dBm) | GSM850 : 32.91<br>GSM1900 : 30.64<br>WCDMA Band II : 22.11<br>WCDMA Band V : 23.18                     |
| Antenna Type                               | Fixed Internal Antenna   |
| EUT Stage                                  | Identical Prototype  |

**Note:**

- The above EUT information is declared by manufacturer and for more detailed features description please refers to the manufacturer's specifications or User's Manual.

**List of Accessory:**

|         |              |                 |
|---------|--------------|-----------------|
| Battery | Brand Name   | Sonim           |
|         | Model Name   | BAT-01950-01S   |
|         | Power Rating | 3.7Vdc, 1950mAh |
|         | Type         | Li-ion          |

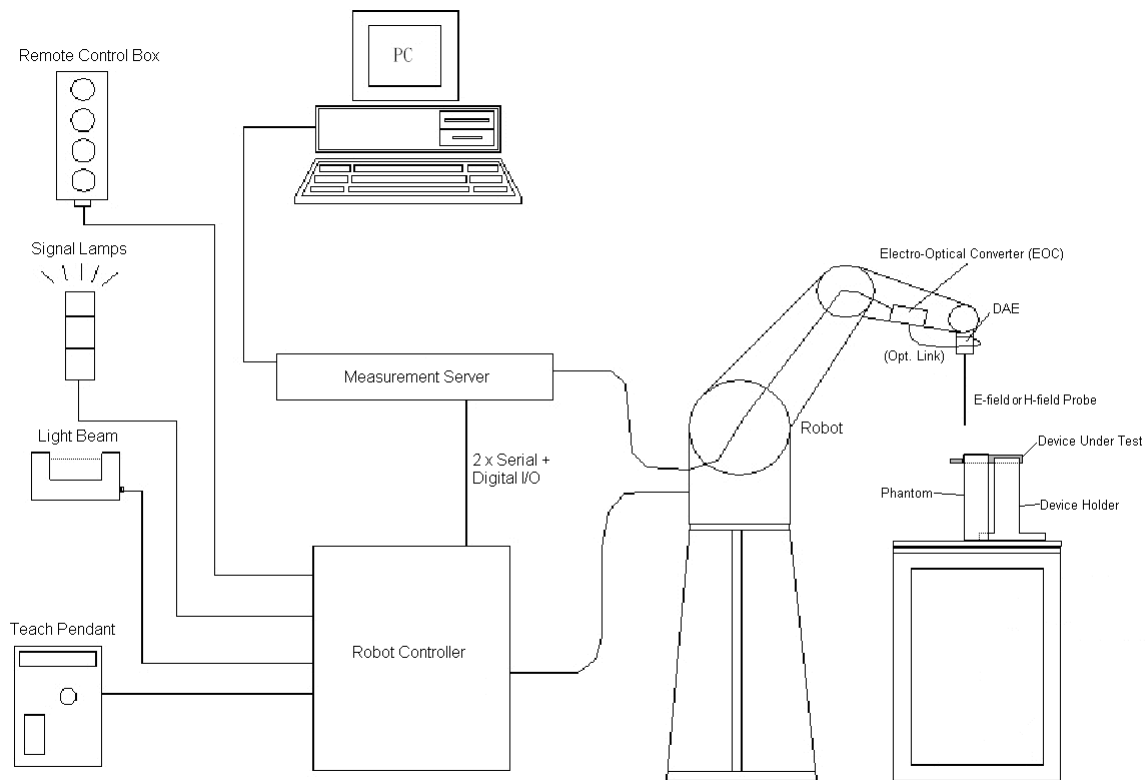
| Air Interfaces/Bands List |      |       |               |                            |               |      |
|---------------------------|------|-------|---------------|----------------------------|---------------|------|
| Air Interface             | Band | Type  | C63.19 Tested | Simultaneous Transmissions | Reduced Power | VOIP |
| GSM                       | 850  | Voice | Yes           | BT                         | N/A           | N/A  |
|                           |      | Data  | N/A           | BT                         | N/A           | Yes  |
|                           | 1900 | Voice | Yes           | BT                         | N/A           | N/A  |
|                           |      | Data  | N/A           | BT                         | N/A           | Yes  |
| WCDMA                     | II   | Voice | Yes           | BT                         | N/A           | N/A  |
|                           |      | Data  | N/A           | BT                         | N/A           | Yes  |
|                           | V    | Voice | Yes           | BT                         | N/A           | N/A  |
|                           |      | Data  | N/A           | BT                         | N/A           | Yes  |
| Bluetooth                 | 2450 | Data  | N/A           | WWAN                       | N/A           | N/A  |

**Note: The HAC rating was evaluated for voice mode only.**

### **3. HAC RF Emission Measurement System**

#### **3.1 SPEAG DASY System**

DASY system consists of high precision robot, probe alignment sensor, phantom, robot controller, controlled measurement server and near-field probe. The robot includes six axes that can move to the precision position of the DASY5 software defined. The DASY software can define the area that is detected by the probe. The robot is connected to controlled box. Controlled measurement server is connected to the controlled robot box. The DAE includes amplifier, signal multiplexing, AD converter, offset measurement and surface detection. It is connected to the Electro-optical coupler (ECO). The ECO performs the conversion from the optical into digital electric signal of the DAE and transfers data to the PC.



**Fig-3.1 DASY System Setup**

# FCC HAC (RF Emission) Test Report

## 3.1.1 Robot


The DASY system uses the high precision robots from Stäubli SA (France). For the 6-axis controller system, the robot controller version (DASY5: CS8c) from Stäubli is used. The Stäubli robot series have many features that are important for our application:

- High precision (repeatability  $\pm 0.035$  mm)
- High reliability (industrial design)
- Jerk-free straight movements
- Low ELF interference (the closed metallic construction shields against motor control fields)




**Fig-3.2 DASY5**


## 3.1.2 Probes

|                      |  |   |
|----------------------|--|---|
| <b>Model</b>         | ER3DV6   |  |
| <b>Construction</b>  | One dipole parallel, two dipoles normal to probe axis<br>Built-in shielding against static charges                           |   |
| <b>Frequency</b>     | 40 MHz to 6 GHz<br>Linearity: $\pm 0.2$ dB   |   |
| <b>Directivity</b>   | $\pm 0.2$ dB in air (rotation around probe axis)<br>$\pm 0.4$ dB in air (rotation normal to probe axis)                      |   |
| <b>Dynamic Range</b> | 2 V/m to 1000 V/m<br>Linearity: $\pm 0.2$ dB   |   |
| <b>Dimensions</b>    | Overall length: 337 mm (Tip: 16 mm)<br>Tip diameter: 8 mm (Body: 12 mm)<br>Distance from probe tip to dipole centers: 2.5 mm |   |


## 3.1.3 Data Acquisition Electronics (DAE)

|                             |  |   |
|-----------------------------|--|---|
| <b>Model</b>                | DAE3, DAE4   |  |
| <b>Construction</b>         | Signal amplifier, multiplexer, A/D converter and control logic. Serial optical link for communication with DASY5 embedded system (fully remote controlled). Two step probe touch detector for mechanical surface detection and emergency robot stop. |   |
| <b>Measurement Range</b>    | -100 to +300 mV (16 bit resolution and two range settings: 4mV, 400mV)   |   |
| <b>Input Offset Voltage</b> | < 5 $\mu$ V (with auto zero)   |   |
| <b>Input Bias Current</b>   | < 50 fA  |   |
| <b>Dimensions</b>           | 60 x 60 x 68 mm  |   |


### 3.1.4 Phantoms

|                     |  |   |
|---------------------|--|---|
| <b>Model</b>        | Test Arch  |  |
| <b>Construction</b> | Enables easy and well defined positioning of the phone and validation dipoles as well as simple teaching of the robot. |   |
| <b>Dimensions</b>   | Length : 370 mm<br>Width : 370 mm<br>Height : 370 mm   |   |

### 3.1.5 Device Holder

|                     |   |   |
|---------------------|---|---|
| <b>Model</b>        | Mounting Device   |  |
| <b>Construction</b> | The Mounting Device enables the rotation of the mounted transmitter device in spherical coordinates. Rotation point is the ear opening point. Transmitter devices can be easily and accurately positioned according to ANSI C63.19. |   |
| <b>Material</b>     | POM   |   |

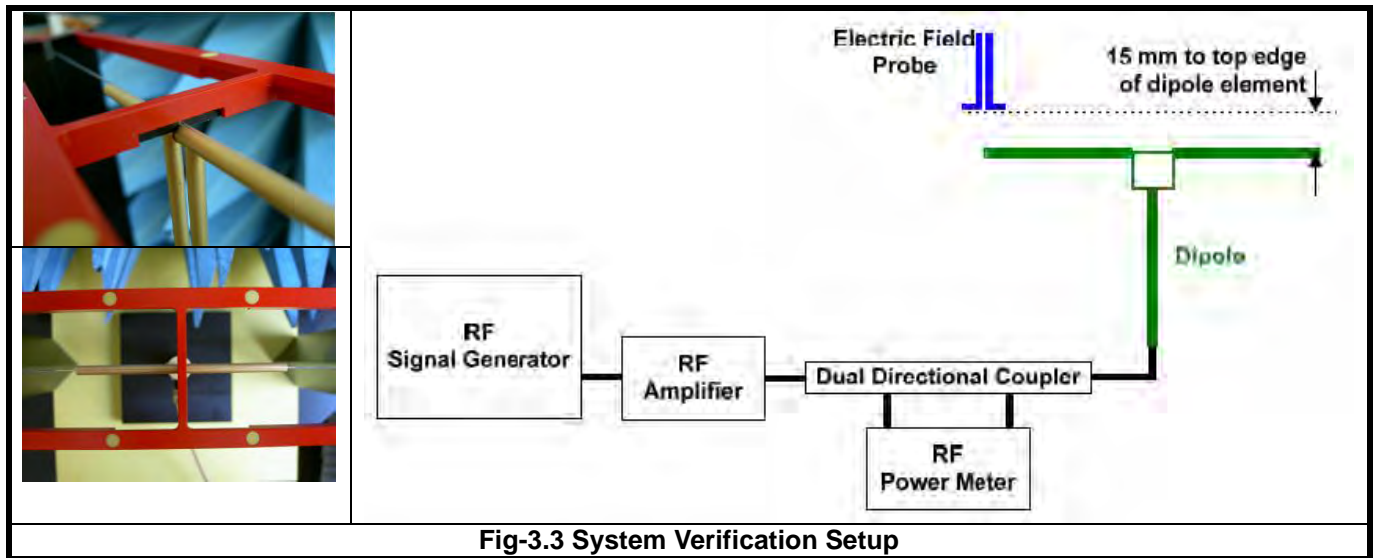
### 3.1.6 RF Emission Calibration Dipoles

|                         |   |   |
|-------------------------|---|---|
| <b>Model</b>            | CD-Serial   |  |
| <b>Construction</b>     | Free space antenna<br>Hearing Aid susceptibility measurements according to ANSI C63.19. Validation of Hearing Aid RF setup for wireless device emission measurements according to ANSI C63.19 |   |
| <b>Frequency</b>        | CD835V3 : 800 ~ 960 MHz<br>CD1880V3 : 1710 ~ 2000 MHz<br>CD2450 : 2250 ~ 2650 MHz   |   |
| <b>Return Loss</b>      | CD835V3 : > 15 dB (835 MHz > 25 dB)<br>CD1880V3 : > 18 dB (1880 MHz > 20 dB)<br>CD2450V3 : > 18 dB (2450 MHz > 25 dB)   |   |
| <b>Power Capability</b> | > 40 W continuous   |   |



### 3.2 DASY System Verification

The system check verifies that the system operates within its specifications. It is performed before every E-field measurement. The system check uses normal measurements in the center section of the arch phantom with a matched dipole at a specified distance. The system verification setup is shown as below.



The validation dipole is placed beneath the center of arch phantom. The power meter measures the forward power at the location of the system check dipole connector. The signal generator is adjusted for the desired forward power, 100 mW (20 dBm) at the dipole connector and the RF power meter is read at that level. After connecting the cable to the dipole, the signal generator is readjusted for the same reading at RF power meter.

After system check testing, the E-field or H-field result will be compared with the reference value derived from validation dipole certificate report. The deviation of system check should be within 25 %.

The result of system verification is shown in section 4.3 of this report.

# FCC HAC (RF Emission) Test Report

## 3.3 EUT Measurements Reference and Plane

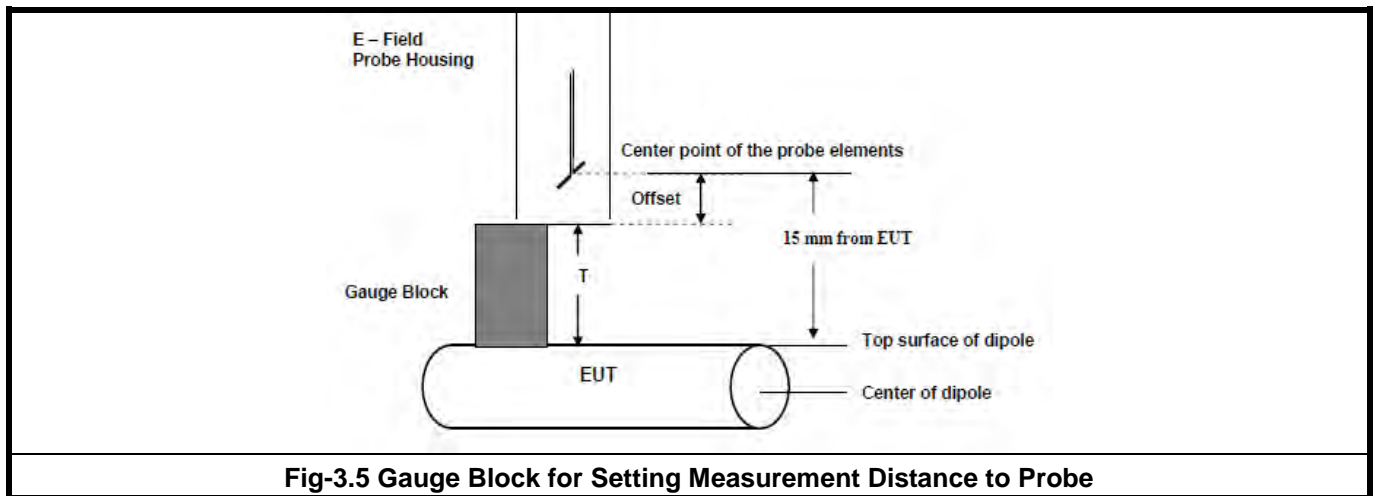
The EUT is mounted in the device holder. The acoustic output of the EUT will coincide with the center point of the area formed by the dielectric wire and the middle bar of the arch's top frame. Then EUT will be moved vertically upwards until it touches the frame.

Fig-3.4 and Fig-3.5 illustrate the references and reference plane that is used in the RF emissions measurement.

- (a) The grid is 50 mm by 50 mm area that is divided into nine evenly sized blocks or sub-grids.
- (b) The grid is centered on the audio frequency output transducer of the EUT.
- (c) The grid is in a reference plane, which is defined as the planar area that contains the highest point in the area of the phone that normally rests against the user's ear. It is parallel to the centerline of the receiver area of the phone and is defined by the points of the receiver-end of the EUT handset, which in normal handset use rest against the ear.
- (d) The measurement plane is parallel to and 15 mm in front of the reference plane.



Fig-3.4 EUT Reference and Plane



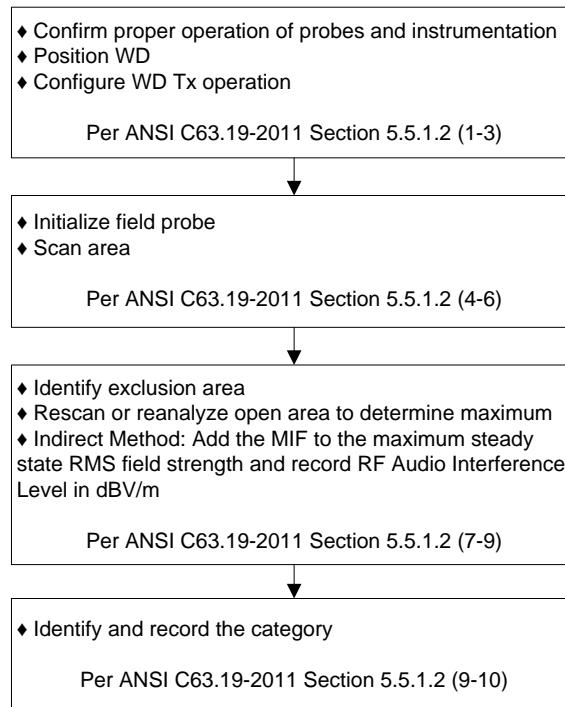
### **3.4 HAC RF Emission Measurement Procedure**

The RF emissions test procedure for wireless communications device is as below.

1. Confirm the proper operation of the field probe, probe measurement system, and other instrumentation and the positioning system.
2. Position the WD in its intended test position.
3. Set the WD to transmit a fixed and repeatable combination of signal power and modulation characteristic that is representative of the worst case (highest interference potential) encountered in normal use. Transiently occurring start-up, changeover, or termination conditions, or other operations likely to occur less than 1% of the time during normal operation, may be excluded from consideration.
4. The center sub-grid shall be centered on the T-Coil mode perpendicular measurement point or the acoustic output, as appropriate. Locate the field probe at the initial test position in the 50 mm by 50 mm grid, which is contained in the measurement plane, illustrated in Fig-3.4. If the field alignment method is used, align the probe for maximum field reception.
5. Record the reading at the output of the measurement system.
6. Scan the entire 50 mm by 50 mm region in equally spaced increments and record the reading at each measurement point. The distance between measurement points shall be sufficient to assure the identification of the maximum reading.
7. Identify the five contiguous sub-grids around the center sub-grid whose maximum reading is the lowest of all available choices. This eliminates the three sub-grids with the maximum readings. Thus, the six areas to be used to determine the WD's highest emissions are identified.
8. Identify the maximum reading within the non-excluded sub-grids identified in step 7.
9. Indirect Measurement Method: The RF audio interference level in dB(V/m) is obtained by adding the MIF (in dB) to the maximum steady-state rms field-strength reading, in dB(V/m), from step 8. Use this result to determine the category rating.

# FCC HAC (RF Emission) Test Report

10. Compare this RF audio interference level with the categories in section 4.1 and record the resulting WD category rating.
11. For the T-Coil mode M-rating assessment, determine whether the chosen perpendicular measurement point is contained in an included sub-grid of the first can. If so, then a second scan is not necessary. The first scan and resultant category rating may be used for the T-Coil mode M-rating. Otherwise, repeat step 1 through step 9, with the grid shifted so that it is centered on the perpendicular measurement point. Record the WD category rating.



**Fig-3.6 WD Near-Field Emission Test Flowchart**



# FCC HAC (RF Emission) Test Report

## 3.5 Modulation Interference Factor

The HAC Standard ANSI C63.19-2011 defines a new scaling using the Modulation Interference Factor (MIF) which replaces the need for the Articulation Weighting Factor (AWF) during the evaluation and is applicable to any modulation scheme.

The Modulation Interference Factor (MIF, in dB) is added to the measured average E-field (in dBV/m) and converts it to the RF audio interference potential (in dBV/m). This level considers the audible amplitude modulation components in the RF E-field. CW fields without amplitude modulation are assumed to not interfere with the hearing aid electronics. Modulations without time slots and low fluctuations at low frequencies have low MIF values, TDMA modulations with narrow transmission slots and repetition rates of few 100 Hz have high MIF values and give similar classification as ANSI C63.19-2007.

ER3D E-field probe have a bandwidth <10 kHz and can therefore not evaluate the RF envelope in the full audio band. DASY52 is therefore using the "indirect" measurement method according to ANSI C63.19-2011 which is the primary method. This near field probe read the averaged E-field. Especially for the new high peak-to-average (PAR) signal types, the probes shall be linearized by PMR calibration in order to not overestimate the field reading.

The evaluation method for the MIF is defined in ANSI C63.19-2011 section D.7. An RMS demodulated RF signal is fed to a spectral filter (similar to an A weighting filter) and forwarded to a temporal filter acting as a quasi-peak detector. The averaged output of these filtering is scaled to a 1 kHz 80% AM signal as reference. It may alternatively be determined through analysis and simulation, because it is constant and characteristic for a communication signal. DASY52 uses well-defined signals for PMR calibration. The MIF of these signals has been determined numerically. It allows a precise scaling and is therefore automatically applied.

The following table lists the MIF values evaluated by SPEAG, and the detailed parameters for E-field probe can be found in the probe calibration report in appendix C.

| SPEAG UID | UID Version        | Communication System | MIF (dB) |
|-----------|--------------------|----------------------|----------|
| 10021     | 3.1.1 (12.11.2012) | GSM-FDD (TDMA, GMSK) | 3.63     |
| 10011     | 3.1.1 (07.11.2012) | UMTS-FDD (WCDMA)     | -27.23   |

The MIF measurement uncertainty listed in following table is estimated by SPEAG.

| MIF (dB)   | MIF Measurement Uncertainty (dB) |
|------------|----------------------------------|
| -7 to +5   | 0.2                              |
| -13 to +11 | 0.5                              |
| > -20      | 1.0                              |

# FCC HAC (RF Emission) Test Report

## 4. HAC Measurement Evaluation

### 4.1 M-Rating Category

The HAC Standard ANSI C63.19-2011 represents performance requirements for acceptable interoperability of hearing aids with wireless communications devices. When these parameters are met, a hearing aid operates acceptably in close proximity to a wireless communications device.

| Emission Categories | E-Field Emissions < 960 MHz (dB V/m) | E-Field Emissions > 960 MHz (dB V/m) |
|---------------------|--------------------------------------|--------------------------------------|
| Category M1         | 50 - 55                              | 40 - 45                              |
| Category M2         | 45 - 50                              | 35 - 40                              |
| Category M3         | 40 - 45                              | 30 - 35                              |
| Category M4         | < 40                                 | < 30                                 |

### 4.2 EUT Configuration and Setting

For HAC RF emission testing, the EUT was linked and controlled by base station emulator. Communication between the EUT and the emulator was established by air link. The distance between the EUT and the communicating antenna of the emulator is larger than 50 cm and the output power radiated from the emulator antenna is at least 30 dB smaller than the output power of EUT. The EUT was set from the emulator to radiate maximum output power during HAC testing.

### 4.3 System Verification

The measuring results for system check are shown as below.

| Frequency (MHz) | Input Power (dBm) | Target Value (V/m) | E-Field 1 (V/m) | E-Field 2 (V/m) | Average E-Field (V/m) | Deviation (%) | Test Date     |
|-----------------|-------------------|--------------------|-----------------|-----------------|-----------------------|---------------|---------------|
| 835             | 20                | 105.1              | 110.1           | 105.3           | 107.7                 | 2.47          | Jan. 14, 2013 |
| 1880            | 20                | 88.2               | 93.97           | 97.09           | 95.53                 | 8.31          | Jan. 14, 2013 |

**Note:**

1. Comparing to the reference target value provided by SPEAG, the validation data should be within its specification of 25 %. The result indicates the system check can meet the variation criterion and the plots can be referred to Appendix A of this report.
2. For E-Field, the deviation is  $[(E\text{-Field } 1 + E\text{-Field } 2) / 2 - \text{Target Value}] / \text{Target Value} \times 100\%$



# FCC HAC (RF Emission) Test Report

## 4.4 Conducted Power Results

The measuring conducted power (Unit: dBm) are shown as below.

| Band                 | GSM850 |       |       | GSM1900 |        |        |
|----------------------|--------|-------|-------|---------|--------|--------|
| Channel              | 128    | 189   | 251   | 512     | 661    | 810    |
| Frequency (MHz)      | 824.2  | 836.4 | 848.8 | 1850.2  | 1880.0 | 1909.8 |
| GSM (GMSK, 1 Uplink) | 32.58  | 32.91 | 32.84 | 30.64   | 30.41  | 30.15  |

| Band            | WCDMA Band II |        |        | WCDMA Band V |       |       |
|-----------------|---------------|--------|--------|--------------|-------|-------|
| Channel         | 9262          | 9400   | 9538   | 4132         | 4182  | 4233  |
| Frequency (MHz) | 1852.4        | 1880.0 | 1907.6 | 826.4        | 836.4 | 846.6 |
| RMC 12.2K       | 21.90         | 21.88  | 22.11  | 23.13        | 23.18 | 23.12 |

## 4.5 HAC RF Emission Testing Results

### 4.5.1 E-Field Emissions

| Plot No. | Band     | Mode     | Channel | MIF (dB) | Peak RF Audio Interference (dBV/m) | M-Rating  | Margin to Next Lower Rated Category (dB) |
|----------|----------|----------|---------|----------|------------------------------------|-----------|--|
| 01       | GSM850   | GSM      | 128     | 3.63     | 39.67                              | M4        | 3.96                                     |
| 02       | GSM850   | GSM      | 190     | 3.63     | 40.13                              | M3        | 8.50                                     |
| 03       | GSM850   | GSM      | 251     | 3.63     | <b>40.49</b>                       | <b>M3</b> | 8.14                                     |
| 04       | GSM1900  | GSM      | 512     | 3.63     | 33.49                              | M3        | 5.14                                     |
| 05       | GSM1900  | GSM      | 661     | 3.63     | <b>33.72</b>                       | <b>M3</b> | 4.91                                     |
| 06       | GSM1900  | GSM      | 810     | 3.63     | 33.52                              | M3        | 5.11                                     |
| 07       | WCDMA II | RMC12.2K | 9262    | -27.23   | <b>5.20</b>                        | <b>M4</b> | -2.43                                    |
| 08       | WCDMA II | RMC12.2K | 9400    | -27.23   | 4.88                               | M4        | -2.11                                    |
| 09       | WCDMA II | RMC12.2K | 9538    | -27.23   | 4.43                               | M4        | -1.66                                    |
| 10       | WCDMA V  | RMC12.2K | 4132    | -27.23   | 7.05                               | M4        | 5.72                                     |
| 11       | WCDMA V  | RMC12.2K | 4182    | -27.23   | <b>7.92</b>                        | <b>M4</b> | 4.85                                     |
| 12       | WCDMA V  | RMC12.2K | 4233    | -27.23   | 6.85                               | M4        | 5.92                                     |

**Note:**

- Margin to Next Lower Rated Category, defined as: The e-field transition value for the next lower rated category of the established HAC category minus the maximum steady-state RMS field strength (before adding the MIF).

Test Engineer : Keith Wang

**FCC HAC (RF Emission) Test Report****5. Calibration of Test Equipment**

| <b>Equipment</b>                     | <b>Manufacturer</b> | <b>Model</b>   | <b>SN</b>  | <b>Cal. Date</b> | <b>Cal. Interval</b> |
|--------------------------------------|---------------------|----------------|------------|------------------|----------------------|
| 835MHz Calibration Dipole            | SPEAG               | CD835V3        | 1041       | Jun. 14, 2012    | Annual               |
| 1880MHz Calibration Dipole           | SPEAG               | CD1880V3       | 1032       | Apr. 26, 2012    | Annual               |
| Isotropic E-Field Probe              | SPEAG               | ER3DV6         | 2445       | Jun. 22, 2012    | Annual               |
| Data Acquisition Electronics         | SPEAG               | DAE3           | 579        | Apr. 27, 2012    | Annual               |
| Test Arch Phantom                    | SPEAG               | Arch           | N/A        | N/A              | N/A                  |
| Universal Radio Communication Tester | R&S                 | CMU200         | 122554     | Sep. 13, 2012    | Annual               |
| MXG Analog Signal Generator          | Agilent             | N5181A         | MY50143868 | May 06, 2012     | Annual               |
| Power Meter                          | Anritsu             | ML2495A        | 1218009    | May 07, 2012     | Annual               |
| Power Sensor                         | Anritsu             | MA2411B        | 1207252    | May 07, 2012     | Annual               |
| EXA Spectrum Analyzer                | Agilent             | N9010A         | MY52100136 | Apr. 23, 2012    | Annual               |
| Directional Coupler                  | Woken               | 0110A056020-10 | 11122702   | Apr. 19, 2012    | Annual               |
| Power Amplifier                      | AR                  | 5S1G4          | 0339656    | Apr. 23, 2012    | Annual               |
| Attenuator                           | Woken               | 00800A1G01L-03 | N/A        | Apr. 19, 2012    | Annual               |





## 6. Measurement Uncertainty

| Error Description                    | Uncertainty Value (±%) | Probability Distribution | Divisor | Ci (E) | Ci (H) | Standard Uncertainty (E) |
|--------------------------------------|------------------------|--------------------------|---------|--------|--------|--------------------------|
| <b>Measurement System</b>            |                        |                          |         |        |        |                          |
| Probe Calibration                    | 5.1                    | Normal                   | 1       | 1      | 1      | ± 5.1 %                  |
| Axial Isotropy                       | 4.7                    | Rectangular              | √3      | 1      | 1      | ± 2.7 %                  |
| Sensor Displacement                  | 16.5                   | Rectangular              | √3      | 1      | 0.145  | ± 9.5 %                  |
| Boundary Effects                     | 2.4                    | Rectangular              | √3      | 1      | 1      | ± 1.4 %                  |
| Phantom Boundary Effect              | 7.2                    | Rectangular              | √3      | 1      | 0      | ± 4.1 %                  |
| Linearity                            | 4.7                    | Rectangular              | √3      | 1      | 1      | ± 2.7 %                  |
| Scaling with PMR Calibration         | 10.0                   | Rectangular              | √3      | 1      | 1      | ± 5.8 %                  |
| System Detection Limit               | 1.0                    | Rectangular              | √3      | 1      | 1      | ± 0.6 %                  |
| Readout Electronics                  | 0.3                    | Normal                   | 1       | 1      | 1      | ± 0.3 %                  |
| Response Time                        | 0.8                    | Rectangular              | √3      | 1      | 1      | ± 0.5 %                  |
| Integration Time                     | 2.6                    | Rectangular              | √3      | 1      | 1      | ± 1.5 %                  |
| RF Ambient Conditions                | 3.0                    | Rectangular              | √3      | 1      | 1      | ± 1.7 %                  |
| RF Reflections                       | 12.0                   | Rectangular              | √3      | 1      | 1      | ± 6.9 %                  |
| Probe Positioner                     | 1.2                    | Rectangular              | √3      | 1      | 0.67   | ± 0.7 %                  |
| Probe Positioning                    | 4.7                    | Rectangular              | √3      | 1      | 0.67   | ± 2.7 %                  |
| Extrap. and Interpolation            | 1.0                    | Rectangular              | √3      | 1      | 1      | ± 0.6 %                  |
| <b>Test Sample Related</b>           |                        |                          |         |        |        |                          |
| Device Positioning Vertical          | 4.7                    | Rectangular              | √3      | 1      | 0.67   | ± 2.7 %                  |
| Device Positioning Lateral           | 1.0                    | Rectangular              | √3      | 1      | 1      | ± 0.6 %                  |
| Device Holder and Phantom            | 2.4                    | Rectangular              | √3      | 1      | 1      | ± 1.4 %                  |
| Power Drift                          | 5.0                    | Rectangular              | √3      | 1      | 1      | ± 2.9 %                  |
| <b>Phantom and Setup Related</b>     |                        |                          |         |        |        |                          |
| Phantom Thickness                    | 2.4                    | Rectangular              | √3      | 1      | 0.67   | ± 1.4 %                  |
| <b>Combined Standard Uncertainty</b> |                        |                          |         |        |        | ± 16.3 %                 |
| Coverage Factor for 95 %             |                        |                          |         |        |        | K = 2                    |
| <b>Expanded Uncertainty</b>          |                        |                          |         |        |        | <b>± 32.6 %</b>          |

Uncertainty budget for HAC RF Emission



## FCC HAC (RF Emission) Test Report

---

### 7. Information on the Testing Laboratories

We, Bureau Veritas Consumer Products Services (H.K.) Ltd., Taoyuan Branch, were founded in 1988 to provide our best service in EMC, Radio, Telecom and Safety consultation. Our laboratories are accredited and approved according to ISO/IEC 17025.

If you have any comments, please feel free to contact us at the following:

**Taiwan HwaYa EMC/RF/Safety/Telecom Lab:**

Add: No. 19, Hwa Ya 2nd Rd, Wen Hwa Vil., Kwei Shan Hsiang, Taoyuan Hsien 333, Taiwan, R.O.C.

Tel: 886-3-318-3232

Fax: 886-3-327-0892

**Taiwan LinKo EMC/RF Lab:**

Add: No. 47, 14th Ling, Chia Pau Vil., Linkou Dist., New Taipei City 244, Taiwan, R.O.C.

Tel: 886-2-2605-2180

Fax: 886-2-2605-1924

**Taiwan HsinChu EMC/RF Lab:**

Add: No. 81-1, Lu Liao Keng, 9<sup>th</sup> Ling, Wu Lung Vil., Chiung Lin Township, Hsinchu County 307, Taiwan, R.O.C.

Tel: 886-3-593-5343

Fax: 886-3-593-5342

**Email:** [service.adt@tw.bureauveritas.com](mailto:service.adt@tw.bureauveritas.com)

**Web Site:** [www.adt.com.tw](http://www.adt.com.tw)

The road map of all our labs can be found in our web site also.

---END---



## **Appendix A. Plots of System Verification**

The plots for system verification are shown as follows.

### System Check\_E-Field\_835\_130114

**DUT: HAC Dipole 835 MHz; Type: CD835V3; SN: 1041**

Communication System: CW; Frequency: 835 MHz; Duty Cycle: 1:1  
 Medium: Air Medium parameters used:  $\sigma = 0$  mho/m,  $\epsilon_r = 1$ ;  $\rho = 0$  kg/m<sup>3</sup>  
 Ambient Temperature : 21.8°C

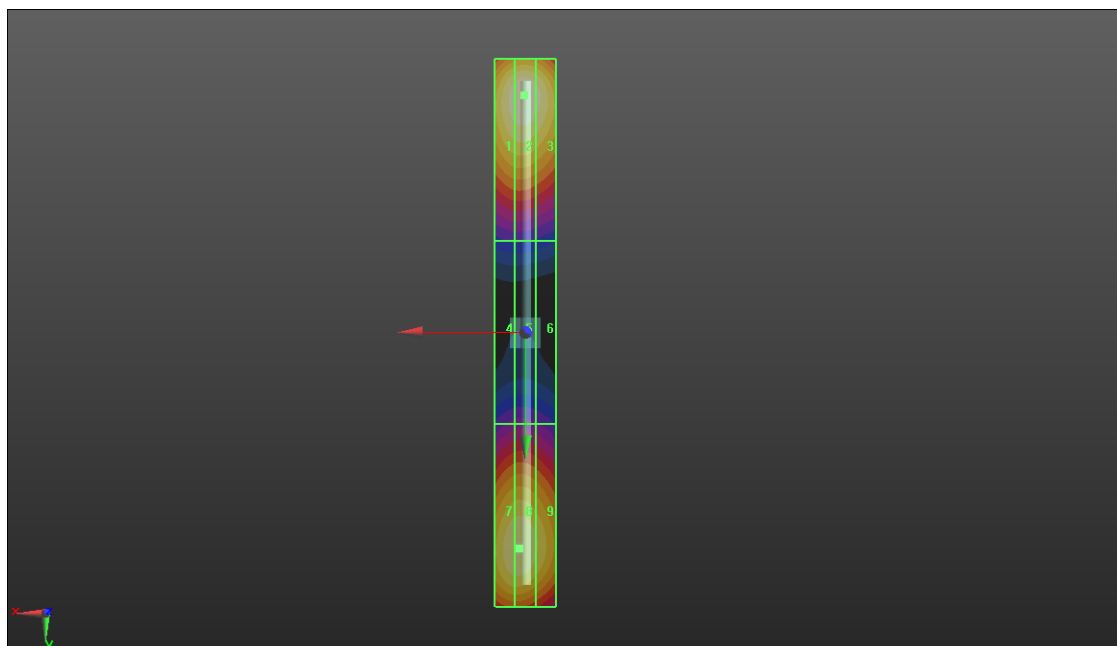
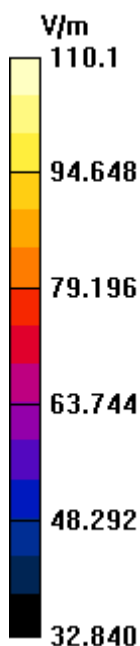
DASY5 Configuration:

- Probe: ER3DV6 - SN2445; ConvF(1, 1, 1); Calibrated: 2012/06/22;
- Sensor-Surface: (Fix Surface)
- Electronics: DAE3 Sn579; Calibrated: 2012/04/27
- Phantom: HAC Test Arch with AMCC; Type: SD HAC P01 BA;
- Measurement SW: DASY52, Version 52.8 (3); SEMCAD X Version 14.6.7 (6848)

**Hearing Aid Compatibility(41x361x1):** Measurement grid: dx=5mm, dy=5mm

Device Reference Point: 0, 0, -6.3 mm  
 Reference Value = 118.4 V/m; Power Drift = -0.03 dB  
 PMR not calibrated. PMF = 1.000 is applied.  
 E-field emissions = 110.1 V/m  
**Near-field category: M4 (AWF 0 dB)**

|                                      |                                      |                                      |
|--------------------------------------|--------------------------------------|--------------------------------------|
| Grid 1 <b>M4</b><br><b>108.3 V/m</b> | Grid 2 <b>M4</b><br><b>110.1 V/m</b> | Grid 3 <b>M4</b><br><b>107.4 V/m</b> |
| Grid 4 <b>M4</b><br><b>61.03 V/m</b> | Grid 5 <b>M4</b><br><b>61.49 V/m</b> | Grid 6 <b>M4</b><br><b>59.69 V/m</b> |
| Grid 7 <b>M4</b><br><b>104.9 V/m</b> | Grid 8 <b>M4</b><br><b>105.3 V/m</b> | Grid 9 <b>M4</b><br><b>100.7 V/m</b> |



### System Check\_E-Field\_1880\_130114

**DUT: HAC Dipole 1880 MHz; Type: CD1880V3; SN: 1032**

Communication System: CW; Frequency: 1880 MHz; Duty Cycle: 1:1

Medium: Air Medium parameters used:  $\sigma = 0$  mho/m,  $\epsilon_r = 1$ ;  $\rho = 1000$  kg/m<sup>3</sup>

Ambient Temperature : 21.8°C

DASY5 Configuration:

- Probe: ER3DV6 - SN2445; ConvF(1, 1, 1); Calibrated: 2012/06/22;
- Sensor-Surface: (Fix Surface)
- Electronics: DAE3 Sn579; Calibrated: 2012/04/27
- Phantom: HAC Test Arch with AMCC; Type: SD HAC P01 BA;
- Measurement SW: DASY52, Version 52.8 (3); SEMCAD X Version 14.6.7 (6848)

**Hearing Aid Compatibility(41x181x1):** Measurement grid: dx=5mm, dy=5mm

Device Reference Point: 0, 0, -6.3 mm

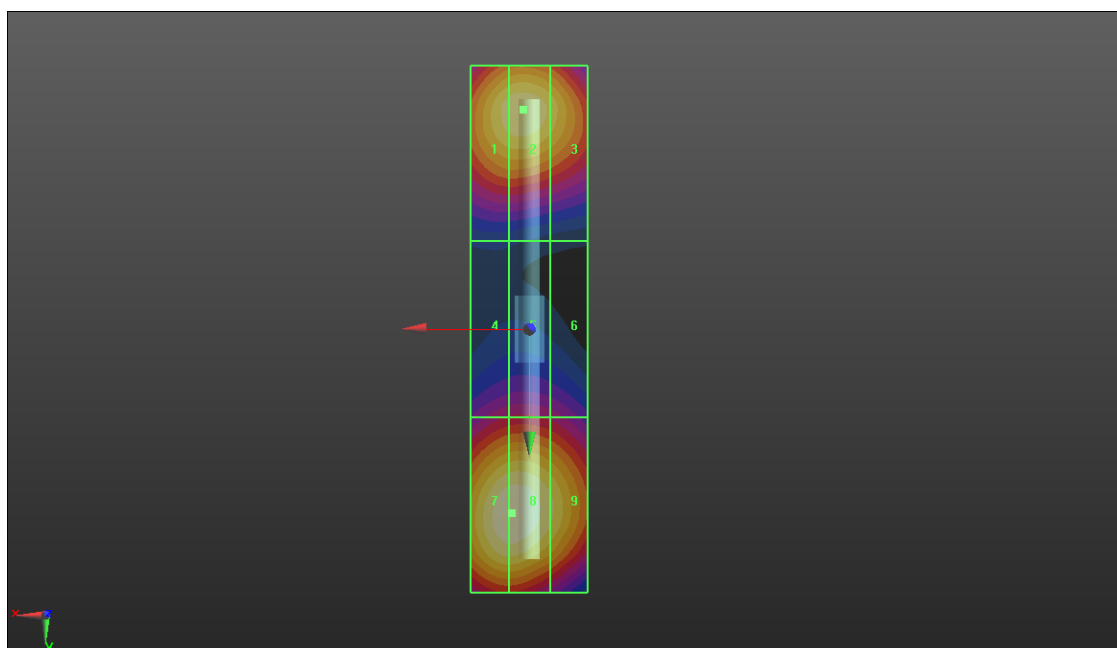
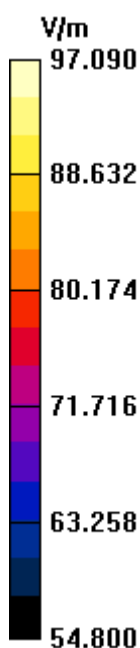
Reference Value = 147.8 V/m; Power Drift = -0.03 dB

PMR not calibrated. PMF = 1.000 is applied.

E-field emissions = 97.09 V/m

**Near-field category: M3 (AWF 0 dB)**

|                                      |                                      |                                      |
|--------------------------------------|--------------------------------------|--------------------------------------|
| Grid 1 <b>M3</b><br><b>93.03 V/m</b> | Grid 2 <b>M3</b><br><b>93.97 V/m</b> | Grid 3 <b>M3</b><br><b>90.80 V/m</b> |
| Grid 4 <b>M3</b><br><b>74.91 V/m</b> | Grid 5 <b>M3</b><br><b>75.41 V/m</b> | Grid 6 <b>M3</b><br><b>73.91 V/m</b> |
| Grid 7 <b>M3</b><br><b>97.03 V/m</b> | Grid 8 <b>M3</b><br><b>97.09 V/m</b> | Grid 9 <b>M3</b><br><b>92.45 V/m</b> |





## **Appendix B. Plots of HAC RF Emission Measurement**

The plots for HAC measurement are shown as follows.

### P01 E-Field\_GSM850\_Ch128

#### DUT: 121029C13

Communication System: GSM-FDD (TDMA, GMSK); Frequency: 824.2 MHz; Duty Cycle: 1:8.6896

Medium: Air Medium parameters used:  $\sigma = 0 \text{ S/m}$ ,  $\epsilon_r = 1$ ;  $\rho = 0 \text{ kg/m}^3$

Ambient Temperature : 21.8 °C

#### DASY5 Configuration:

- Probe: ER3DV6 - SN2445; ConvF(1, 1, 1); Calibrated: 2012/06/22;
- Sensor-Surface: (Fix Surface)
- Electronics: DAE3 Sn579; Calibrated: 2012/04/27
- Phantom: HAC Test Arch with AMCC; Type: SD HAC P01 BA;
- Measurement SW: DASY52, Version 52.8 (4); SEMCAD X Version 14.6.8 (7028)

**Ch128/Hearing Aid Compatibility (101x101x1):** Interpolated grid: dx=0.5000 mm, dy=0.5000 mm

Device Reference Point: 0, 0, -6.3 mm

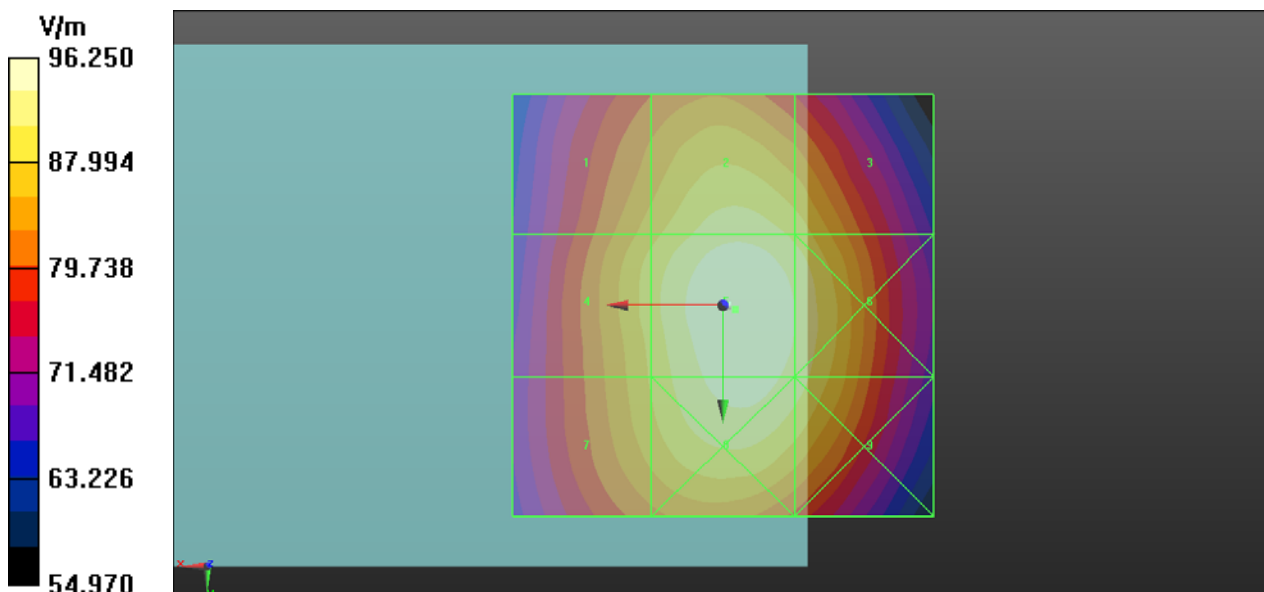
Reference Value = 81.58 V/m; Power Drift = 0.02 dB

Applied MIF = 3.63 dB

RF audio interference level = 39.67 dBV/m

**Emission category: M4**

|  |  |  |
|--|--|--|
| Grid 1 <b>M4</b><br><b>38.79 dBV/m</b> | Grid 2 <b>M4</b><br><b>39.35 dBV/m</b> | Grid 3 <b>M4</b><br><b>39.09 dBV/m</b> |
| Grid 4 <b>M4</b><br><b>39.05 dBV/m</b> | Grid 5 <b>M4</b><br><b>39.67 dBV/m</b> | Grid 6 <b>M4</b><br><b>39.42 dBV/m</b> |
| Grid 7 <b>M4</b><br><b>38.93 dBV/m</b> | Grid 8 <b>M4</b><br><b>39.54 dBV/m</b> | Grid 9 <b>M4</b><br><b>39.31 dBV/m</b> |



## P02 E-Field\_GSM850\_Ch190

### DUT: 121029C13

Communication System: GSM-FDD (TDMA, GMSK); Frequency: 836.6 MHz; Duty Cycle: 1:8.6896

Medium: Air Medium parameters used:  $\sigma = 0 \text{ S/m}$ ,  $\epsilon_r = 1$ ;  $\rho = 0 \text{ kg/m}^3$

Ambient Temperature : 21.8 °C

#### DASY5 Configuration:

- Probe: ER3DV6 - SN2445; ConvF(1, 1, 1); Calibrated: 2012/06/22;
- Sensor-Surface: (Fix Surface)
- Electronics: DAE3 Sn579; Calibrated: 2012/04/27
- Phantom: HAC Test Arch with AMCC; Type: SD HAC P01 BA;
- Measurement SW: DASY52, Version 52.8 (4); SEMCAD X Version 14.6.8 (7028)

**Ch190/Hearing Aid Compatibility (101x101x1):** Interpolated grid: dx=0.5000 mm, dy=0.5000 mm

Device Reference Point: 0, 0, -6.3 mm

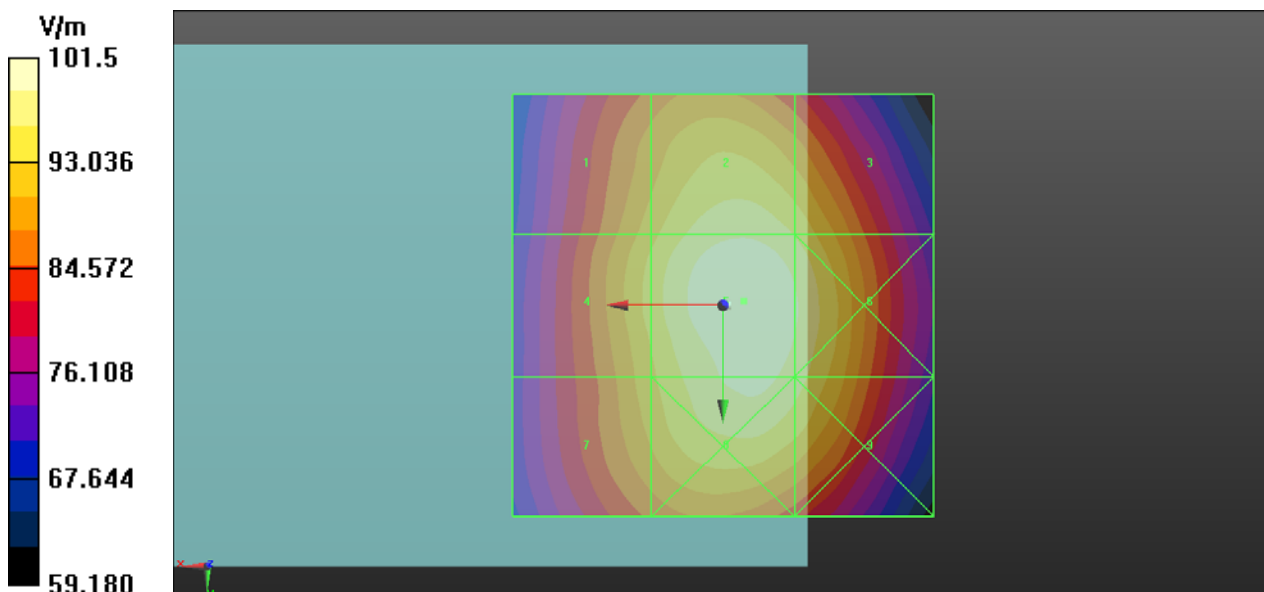
Reference Value = 86.29 V/m; Power Drift = -0.00 dB

Applied MIF = 3.63 dB

RF audio interference level = 40.13 dBV/m

**Emission category: M3**

|  |  |  |
|--|--|--|
| Grid 1 <b>M4</b><br><b>39.29 dBV/m</b> | Grid 2 <b>M4</b><br><b>39.86 dBV/m</b> | Grid 3 <b>M4</b><br><b>39.62 dBV/m</b> |
| Grid 4 <b>M4</b><br><b>39.5 dBV/m</b>  | Grid 5 <b>M3</b><br><b>40.13 dBV/m</b> | Grid 6 <b>M4</b><br><b>39.92 dBV/m</b> |
| Grid 7 <b>M4</b><br><b>39.32 dBV/m</b> | Grid 8 <b>M4</b><br><b>39.96 dBV/m</b> | Grid 9 <b>M4</b><br><b>39.76 dBV/m</b> |





### P03 E-Field\_GSM850\_Ch251

#### DUT: 121029C13

Communication System: GSM-FDD (TDMA, GMSK); Frequency: 848.8 MHz; Duty Cycle: 1:8.6896

Medium: Air Medium parameters used:  $\sigma = 0$  S/m,  $\epsilon_r = 1$ ;  $\rho = 0$  kg/m<sup>3</sup>

Ambient Temperature : 21.8 °C

#### DASY5 Configuration:

- Probe: ER3DV6 - SN2445; ConvF(1, 1, 1); Calibrated: 2012/06/22;
- Sensor-Surface: (Fix Surface)
- Electronics: DAE3 Sn579; Calibrated: 2012/04/27
- Phantom: HAC Test Arch with AMCC; Type: SD HAC P01 BA;
- Measurement SW: DASY52, Version 52.8 (4); SEMCAD X Version 14.6.8 (7028)

**Ch251/Hearing Aid Compatibility (101x101x1):** Interpolated grid: dx=0.5000 mm, dy=0.5000 mm

Device Reference Point: 0, 0, -6.3 mm

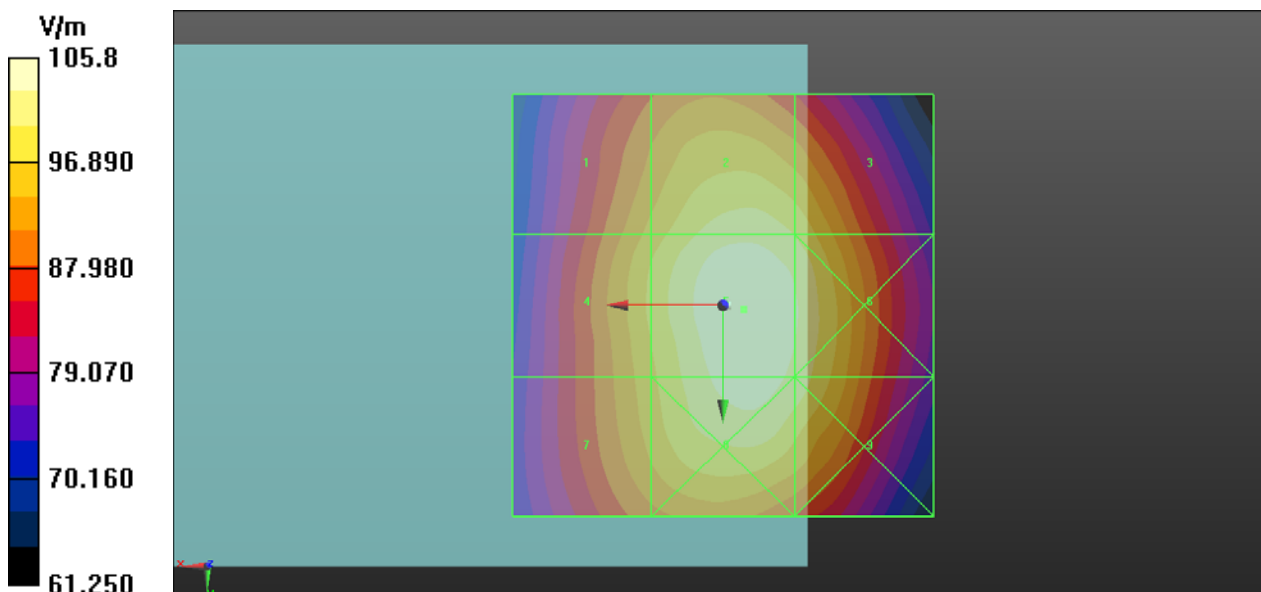
Reference Value = 89.29 V/m; Power Drift = 0.02 dB

Applied MIF = 3.63 dB

RF audio interference level = 40.49 dBV/m

**Emission category: M3**

|  |  |  |
|--|--|--|
| Grid 1 <b>M4</b><br><b>39.57 dBV/m</b> | Grid 2 <b>M3</b><br><b>40.18 dBV/m</b> | Grid 3 <b>M4</b><br><b>39.97 dBV/m</b> |
| Grid 4 <b>M4</b><br><b>39.8 dBV/m</b>  | Grid 5 <b>M3</b><br><b>40.49 dBV/m</b> | Grid 6 <b>M3</b><br><b>40.28 dBV/m</b> |
| Grid 7 <b>M4</b><br><b>39.67 dBV/m</b> | Grid 8 <b>M3</b><br><b>40.38 dBV/m</b> | Grid 9 <b>M3</b><br><b>40.17 dBV/m</b> |



### P04 E-Field\_GSM1900\_Ch512

#### DUT: 121029C13

Communication System: GSM-FDD (TDMA, GMSK); Frequency: 1850.2 MHz; Duty Cycle: 1:8.6896

Medium: Air Medium parameters used:  $\sigma = 0$  S/m,  $\epsilon_r = 1$ ;  $\rho = 0$  kg/m<sup>3</sup>

Ambient Temperature : 21.8 °C

#### DASY5 Configuration:

- Probe: ER3DV6 - SN2445; ConvF(1, 1, 1); Calibrated: 2012/06/22;
- Sensor-Surface: (Fix Surface)
- Electronics: DAE3 Sn579; Calibrated: 2012/04/27
- Phantom: HAC Test Arch with AMCC; Type: SD HAC P01 BA;
- Measurement SW: DASY52, Version 52.8 (4); SEMCAD X Version 14.6.8 (7028)

**Ch512/Hearing Aid Compatibility (101x101x1):** Interpolated grid: dx=0.5000 mm, dy=0.5000 mm

Device Reference Point: 0, 0, -6.3 mm

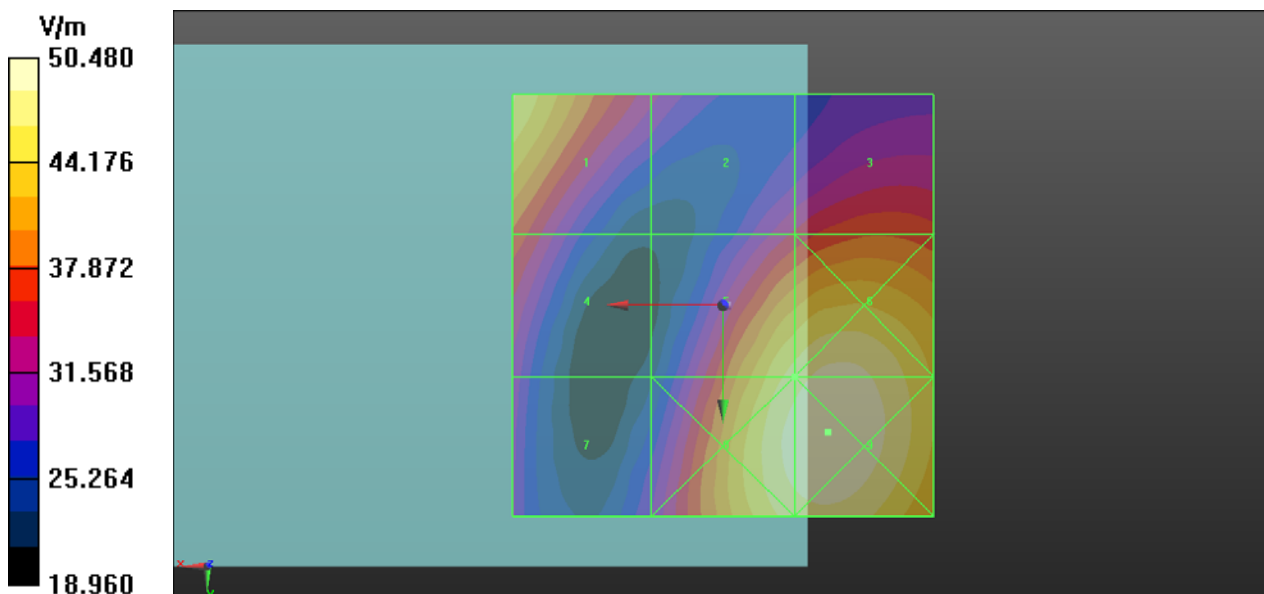
Reference Value = 26.83 V/m; Power Drift = -0.04 dB

Applied MIF = 3.63 dB

RF audio interference level = 33.49 dBV/m

**Emission category: M3**

|  |  |  |
|--|--|--|
| Grid 1 <b>M3</b><br><b>33.37 dBV/m</b> | Grid 2 <b>M3</b><br><b>30.66 dBV/m</b> | Grid 3 <b>M3</b><br><b>31.53 dBV/m</b> |
| Grid 4 <b>M3</b><br><b>31.52 dBV/m</b> | Grid 5 <b>M3</b><br><b>33.49 dBV/m</b> | Grid 6 <b>M3</b><br><b>33.84 dBV/m</b> |
| Grid 7 <b>M4</b><br><b>29.98 dBV/m</b> | Grid 8 <b>M3</b><br><b>33.85 dBV/m</b> | Grid 9 <b>M3</b><br><b>34.06 dBV/m</b> |



### P05 E-Field\_GSM1900\_Ch661

#### DUT: 121029C13

Communication System: GSM-FDD (TDMA, GMSK); Frequency: 1880 MHz; Duty Cycle: 1:8.6896

Medium: Air Medium parameters used:  $\sigma = 0$  S/m,  $\epsilon_r = 1$ ;  $\rho = 0$  kg/m<sup>3</sup>

Ambient Temperature : 21.8 °C

#### DASY5 Configuration:

- Probe: ER3DV6 - SN2445; ConvF(1, 1, 1); Calibrated: 2012/06/22;
- Sensor-Surface: (Fix Surface)
- Electronics: DAE3 Sn579; Calibrated: 2012/04/27
- Phantom: HAC Test Arch with AMCC; Type: SD HAC P01 BA;
- Measurement SW: DASY52, Version 52.8 (4); SEMCAD X Version 14.6.8 (7028)

**Ch661/Hearing Aid Compatibility (101x101x1):** Interpolated grid: dx=0.5000 mm, dy=0.5000 mm

Device Reference Point: 0, 0, -6.3 mm

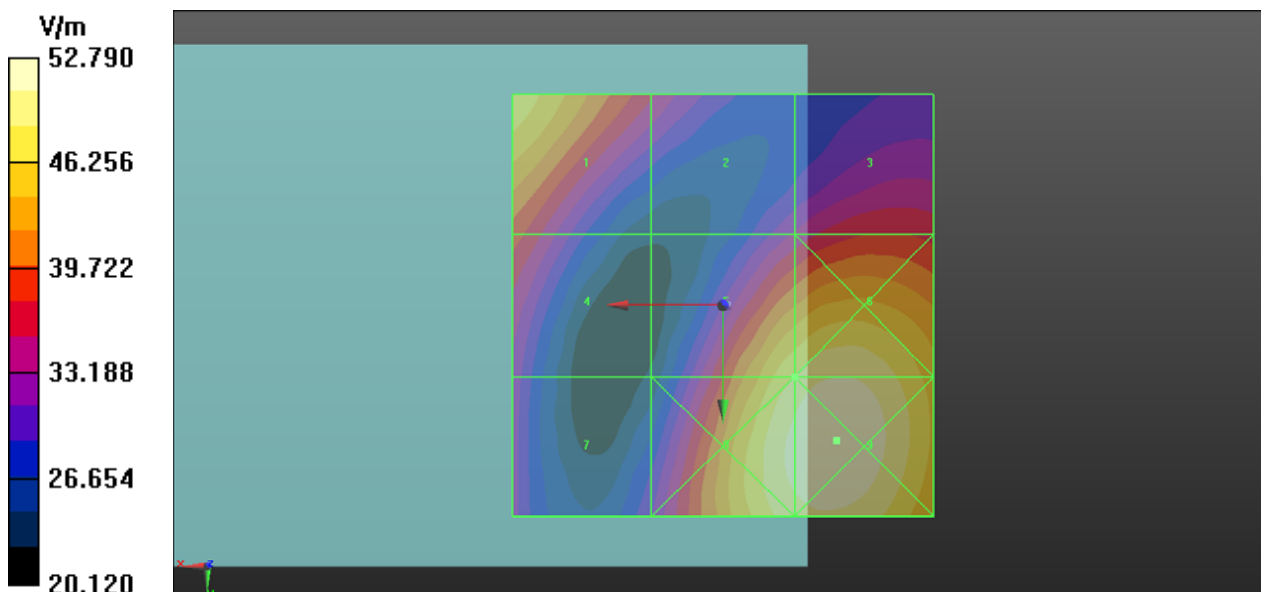
Reference Value = 26.02 V/m; Power Drift = -0.03 dB

Applied MIF = 3.63 dB

RF audio interference level = 33.72 dBV/m

**Emission category: M3**

|  |  |  |
|--|--|--|
| Grid 1 <b>M3</b><br><b>33.61 dBV/m</b> | Grid 2 <b>M3</b><br><b>31.07 dBV/m</b> | Grid 3 <b>M3</b><br><b>31.53 dBV/m</b> |
| Grid 4 <b>M3</b><br><b>31.78 dBV/m</b> | Grid 5 <b>M3</b><br><b>33.72 dBV/m</b> | Grid 6 <b>M3</b><br><b>34.09 dBV/m</b> |
| Grid 7 <b>M3</b><br><b>30.4 dBV/m</b>  | Grid 8 <b>M3</b><br><b>34.21 dBV/m</b> | Grid 9 <b>M3</b><br><b>34.45 dBV/m</b> |



### P06 E-Field\_GSM1900\_Ch810

#### DUT: 121029C13

Communication System: GSM-FDD (TDMA, GMSK); Frequency: 1909.8 MHz; Duty Cycle: 1:8.6896

Medium: Air Medium parameters used:  $\sigma = 0$  S/m,  $\epsilon_r = 1$ ;  $\rho = 0$  kg/m<sup>3</sup>

Ambient Temperature : 21.8 °C

#### DASY5 Configuration:

- Probe: ER3DV6 - SN2445; ConvF(1, 1, 1); Calibrated: 2012/06/22;
- Sensor-Surface: (Fix Surface)
- Electronics: DAE3 Sn579; Calibrated: 2012/04/27
- Phantom: HAC Test Arch with AMCC; Type: SD HAC P01 BA;
- Measurement SW: DASY52, Version 52.8 (4); SEMCAD X Version 14.6.8 (7028)

**Ch810/Hearing Aid Compatibility (101x101x1):** Interpolated grid: dx=0.5000 mm, dy=0.5000 mm

Device Reference Point: 0, 0, -6.3 mm

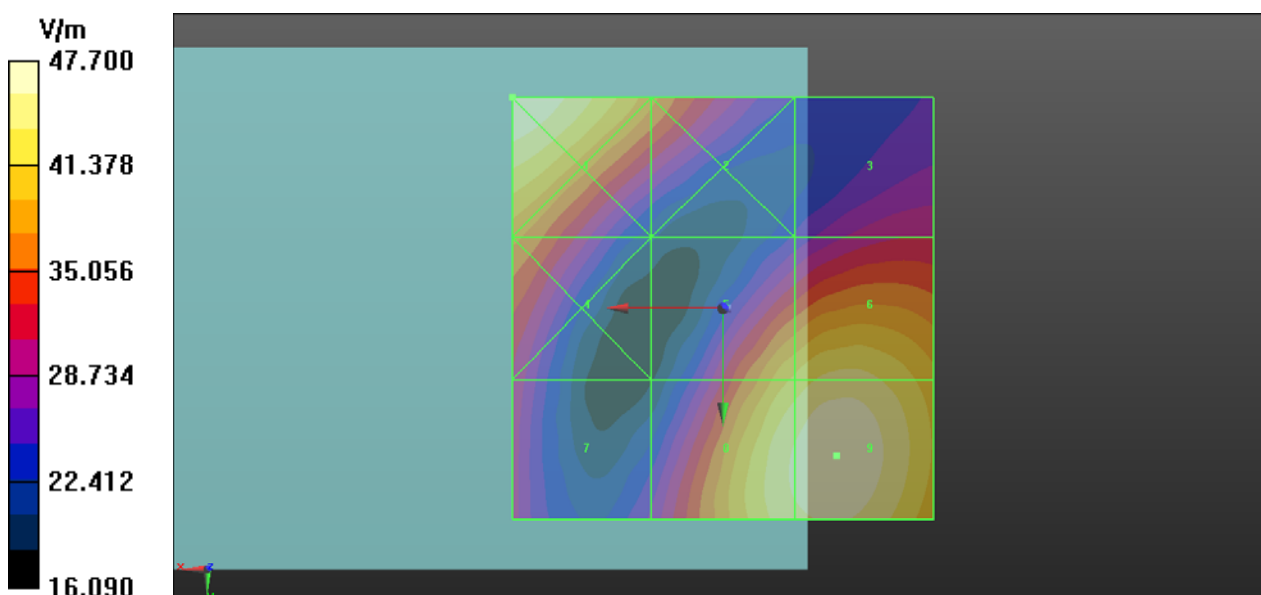
Reference Value = 19.62 V/m; Power Drift = 0.02 dB

Applied MIF = 3.63 dB

RF audio interference level = 33.52 dBV/m

**Emission category: M3**

|  |  |  |
|--|--|--|
| Grid 1 <b>M3</b><br><b>33.57 dBV/m</b> | Grid 2 <b>M3</b><br><b>31.59 dBV/m</b> | Grid 3 <b>M4</b><br><b>29.81 dBV/m</b> |
| Grid 4 <b>M3</b><br><b>31.58 dBV/m</b> | Grid 5 <b>M3</b><br><b>32.44 dBV/m</b> | Grid 6 <b>M3</b><br><b>32.94 dBV/m</b> |
| Grid 7 <b>M4</b><br><b>29.79 dBV/m</b> | Grid 8 <b>M3</b><br><b>33.25 dBV/m</b> | Grid 9 <b>M3</b><br><b>33.52 dBV/m</b> |



### P07 E-Field\_WCDMA II\_Ch9262

#### DUT: 121029C13

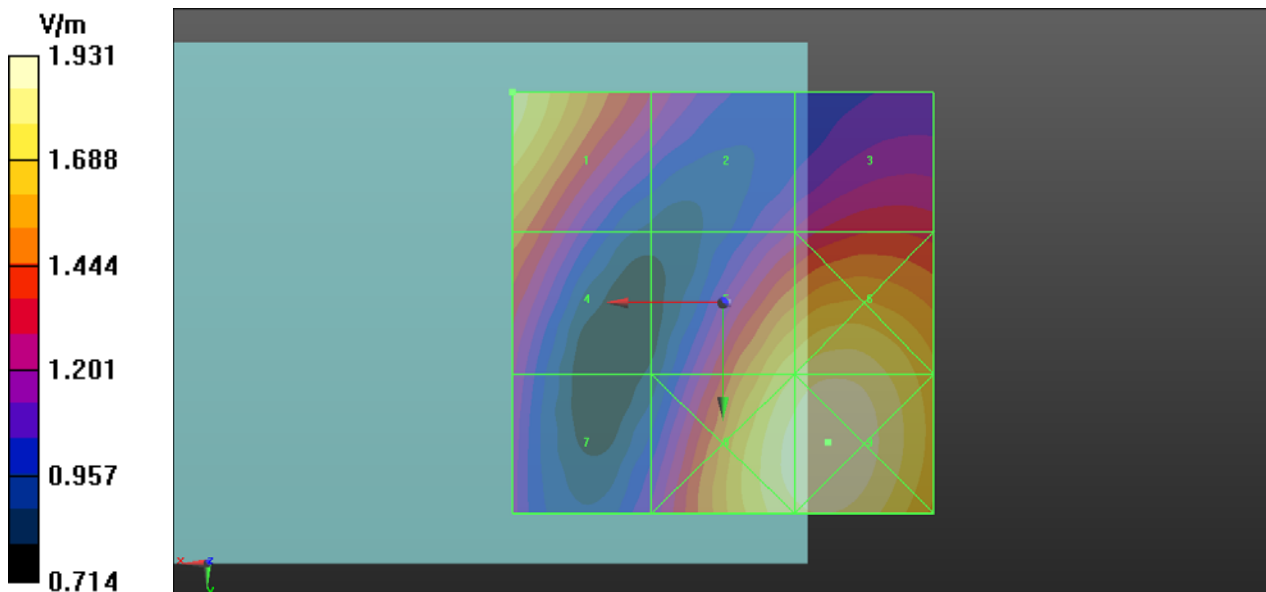
Communication System: UMTS-FDD (WCDMA); Frequency: 1852.4 MHz; Duty Cycle: 1:1.95434  
 Medium: Air Medium parameters used:  $\sigma = 0 \text{ S/m}$ ,  $\epsilon_r = 1$ ;  $\rho = 0 \text{ kg/m}^3$   
 Ambient Temperature : 21.8 °C

#### DASY5 Configuration:

- Probe: ER3DV6 - SN2445; ConvF(1, 1, 1); Calibrated: 2012/06/22;
- Sensor-Surface: (Fix Surface)
- Electronics: DAE3 Sn579; Calibrated: 2012/04/27
- Phantom: HAC Test Arch with AMCC; Type: SD HAC P01 BA;
- Measurement SW: DASY52, Version 52.8 (4); SEMCAD X Version 14.6.8 (7028)

**Ch9262/Hearing Aid Compatibility (101x101x1):** Interpolated grid: dx=0.5000 mm, dy=0.5000 mm  
 Device Reference Point: 0, 0, -6.3 mm  
 Reference Value = 33.53 V/m; Power Drift = -0.11 dB  
 Applied MIF = -27.23 dB  
 RF audio interference level = 5.20 dBV/m  
**Emission category: M4**

|                                       |                                       |                                       |
|---------------------------------------|---------------------------------------|---------------------------------------|
| <b>Grid 1 M4</b><br><b>5.2 dBV/m</b>  | <b>Grid 2 M4</b><br><b>2.18 dBV/m</b> | <b>Grid 3 M4</b><br><b>2.69 dBV/m</b> |
| <b>Grid 4 M4</b><br><b>3.53 dBV/m</b> | <b>Grid 5 M4</b><br><b>4.94 dBV/m</b> | <b>Grid 6 M4</b><br><b>5.3 dBV/m</b>  |
| <b>Grid 7 M4</b><br><b>1.75 dBV/m</b> | <b>Grid 8 M4</b><br><b>5.51 dBV/m</b> | <b>Grid 9 M4</b><br><b>5.71 dBV/m</b> |



### P08 E-Field\_WCDMA II\_Ch9400

#### DUT: 121029C13

Communication System: UMTS-FDD (WCDMA); Frequency: 1880 MHz; Duty Cycle: 1:1.95434  
 Medium: Air Medium parameters used:  $\sigma = 0 \text{ S/m}$ ,  $\epsilon_r = 1$ ;  $\rho = 0 \text{ kg/m}^3$   
 Ambient Temperature : 21.8 °C

#### DASY5 Configuration:

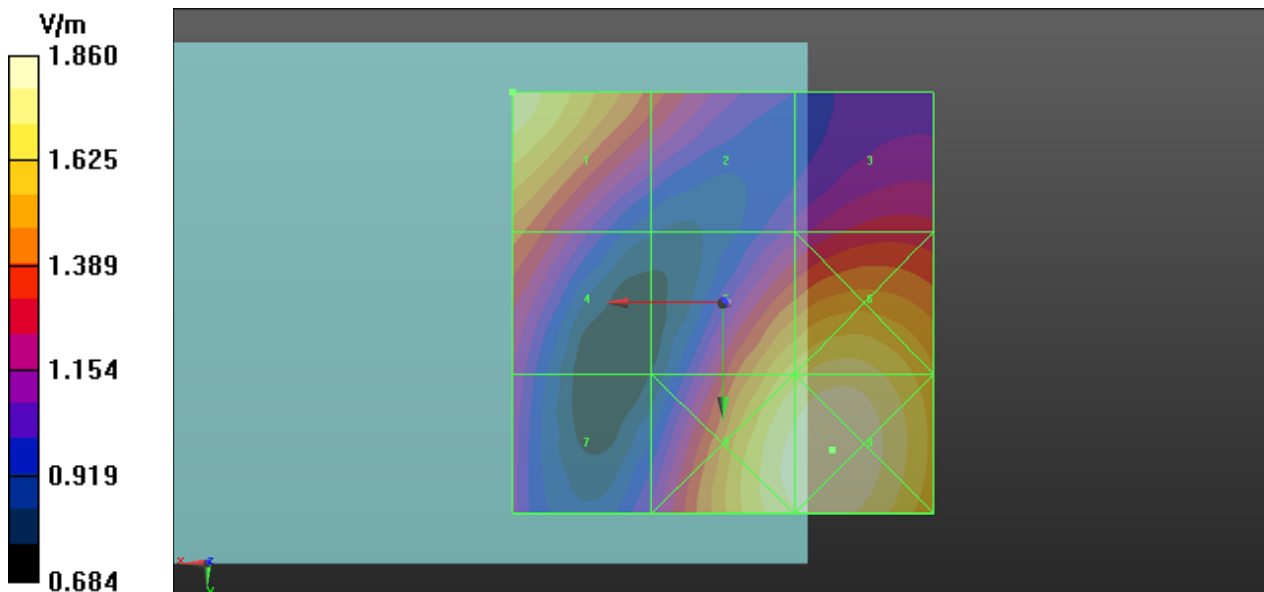
- Probe: ER3DV6 - SN2445; ConvF(1, 1, 1); Calibrated: 2012/06/22;
- Sensor-Surface: (Fix Surface)
- Electronics: DAE3 Sn579; Calibrated: 2012/04/27
- Phantom: HAC Test Arch with AMCC; Type: SD HAC P01 BA;
- Measurement SW: DASY52, Version 52.8 (4); SEMCAD X Version 14.6.8 (7028)

#### Ch9400/Hearing Aid Compatibility Test (101x101x1): Interpolated grid: dx=0.5000 mm, dy=0.5000 mm

Device Reference Point: 0, 0, -6.3 mm  
 Reference Value = 29.84 V/m; Power Drift = -0.04 dB  
 Applied MIF = -27.23 dB  
 RF audio interference level = 4.88 dBV/m

#### Emission category: M4

|                                       |                                       |                                       |
|---------------------------------------|---------------------------------------|---------------------------------------|
| Grid 1 <b>M4</b><br><b>4.88 dBV/m</b> | Grid 2 <b>M4</b><br><b>2.69 dBV/m</b> | Grid 3 <b>M4</b><br><b>2.15 dBV/m</b> |
| Grid 4 <b>M4</b><br><b>3.11 dBV/m</b> | Grid 5 <b>M4</b><br><b>4.45 dBV/m</b> | Grid 6 <b>M4</b><br><b>4.86 dBV/m</b> |
| Grid 7 <b>M4</b><br><b>1.34 dBV/m</b> | Grid 8 <b>M4</b><br><b>5.17 dBV/m</b> | Grid 9 <b>M4</b><br><b>5.39 dBV/m</b> |



### P09 E-Field\_WCDMA II\_Ch9538

#### DUT: 121029C13

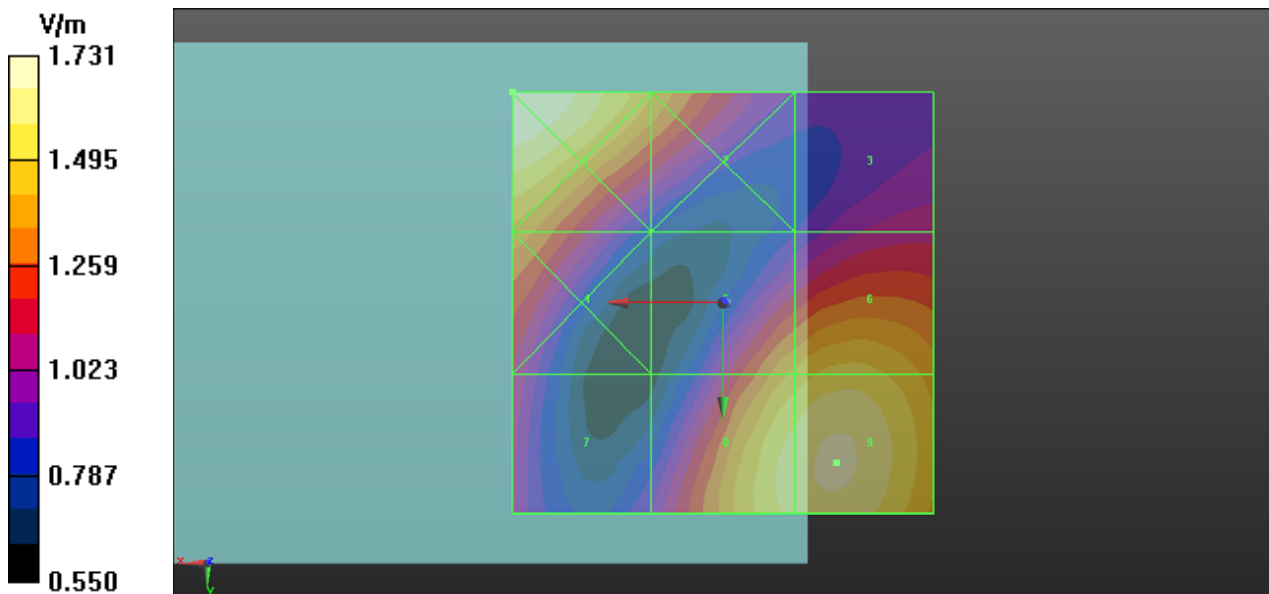
Communication System: UMTS-FDD (WCDMA); Frequency: 1907.6 MHz; Duty Cycle: 1:1.95434  
 Medium: Air Medium parameters used:  $\sigma = 0 \text{ S/m}$ ,  $\epsilon_r = 1$ ;  $\rho = 0 \text{ kg/m}^3$   
 Ambient Temperature : 21.8 °C

#### DASY5 Configuration:

- Probe: ER3DV6 - SN2445; ConvF(1, 1, 1); Calibrated: 2012/06/22;
- Sensor-Surface: (Fix Surface)
- Electronics: DAE3 Sn579; Calibrated: 2012/04/27
- Phantom: HAC Test Arch with AMCC; Type: SD HAC P01 BA;
- Measurement SW: DASY52, Version 52.8 (4); SEMCAD X Version 14.6.8 (7028)

**Ch9538/Hearing Aid Compatibility (101x101x1):** Interpolated grid: dx=0.5000 mm, dy=0.5000 mm  
 Device Reference Point: 0, 0, -6.3 mm  
 Reference Value = 22.61 V/m; Power Drift = -0.01 dB  
 Applied MIF = -27.23 dB  
 RF audio interference level = 4.43 dBV/m  
**Emission category: M4**

|                                       |                                       |                                       |
|---------------------------------------|---------------------------------------|---------------------------------------|
| <b>Grid 1 M4</b><br><b>4.77 dBV/m</b> | <b>Grid 2 M4</b><br><b>3.07 dBV/m</b> | <b>Grid 3 M4</b><br><b>0.64 dBV/m</b> |
| <b>Grid 4 M4</b><br><b>2.9 dBV/m</b>  | <b>Grid 5 M4</b><br><b>3.15 dBV/m</b> | <b>Grid 6 M4</b><br><b>3.71 dBV/m</b> |
| <b>Grid 7 M4</b><br><b>0.89 dBV/m</b> | <b>Grid 8 M4</b><br><b>4.19 dBV/m</b> | <b>Grid 9 M4</b><br><b>4.43 dBV/m</b> |



### P10 E-Field\_WCDMA V\_Ch4132

#### DUT: 121029C13

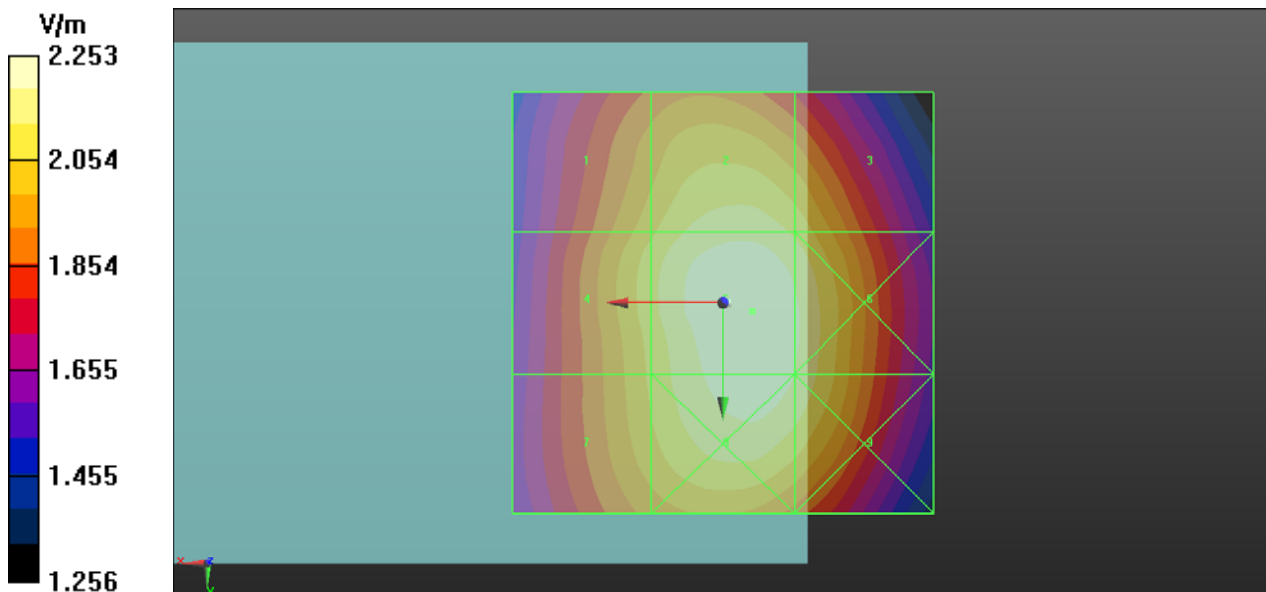
Communication System: UMTS-FDD (WCDMA); Frequency: 826.4 MHz; Duty Cycle: 1:1.95434  
 Medium: Air Medium parameters used:  $\sigma = 0 \text{ S/m}$ ,  $\epsilon_r = 1$ ;  $\rho = 0 \text{ kg/m}^3$   
 Ambient Temperature : 21.8 °C

#### DASY5 Configuration:

- Probe: ER3DV6 - SN2445; ConvF(1, 1, 1); Calibrated: 2012/06/22;
- Sensor-Surface: (Fix Surface)
- Electronics: DAE3 Sn579; Calibrated: 2012/04/27
- Phantom: HAC Test Arch with AMCC; Type: SD HAC P01 BA;
- Measurement SW: DASY52, Version 52.8 (4); SEMCAD X Version 14.6.8 (7028)

**Ch4132/Hearing Aid Compatibility (101x101x1):** Interpolated grid: dx=0.5000 mm, dy=0.5000 mm  
 Device Reference Point: 0, 0, -6.3 mm  
 Reference Value = 67.21 V/m; Power Drift = -0.03 dB  
 Applied MIF = -27.23 dB  
 RF audio interference level = 7.05 dBV/m  
**Emission category: M4**

|                                       |                                       |                                       |
|---------------------------------------|---------------------------------------|---------------------------------------|
| Grid 1 <b>M4</b><br><b>6.2 dBV/m</b>  | Grid 2 <b>M4</b><br><b>6.72 dBV/m</b> | Grid 3 <b>M4</b><br><b>6.48 dBV/m</b> |
| Grid 4 <b>M4</b><br><b>6.44 dBV/m</b> | Grid 5 <b>M4</b><br><b>7.05 dBV/m</b> | Grid 6 <b>M4</b><br><b>6.84 dBV/m</b> |
| Grid 7 <b>M4</b><br><b>6.31 dBV/m</b> | Grid 8 <b>M4</b><br><b>6.98 dBV/m</b> | Grid 9 <b>M4</b><br><b>6.79 dBV/m</b> |





### P11 E-Field\_WCDMA V\_Ch4182

#### DUT: 121029C13

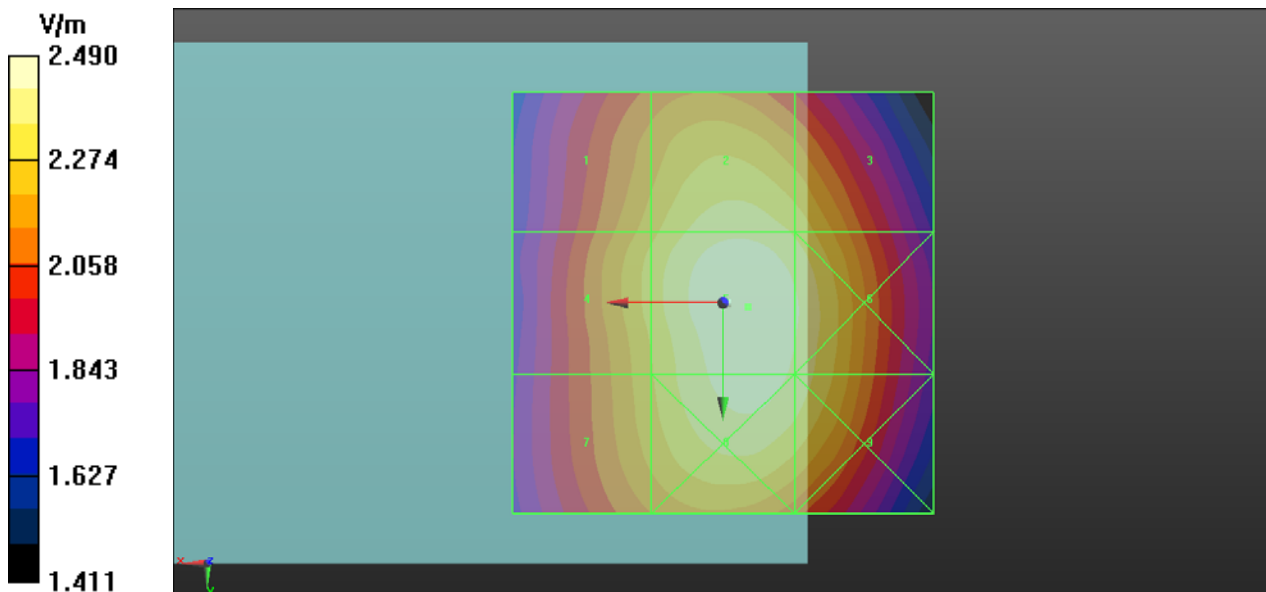
Communication System: UMTS-FDD (WCDMA); Frequency: 836.4 MHz; Duty Cycle: 1:1.95434  
 Medium: Air Medium parameters used:  $\sigma = 0 \text{ S/m}$ ,  $\epsilon_r = 1$ ;  $\rho = 0 \text{ kg/m}^3$   
 Ambient Temperature : 21.8 °C

#### DASY5 Configuration:

- Probe: ER3DV6 - SN2445; ConvF(1, 1, 1); Calibrated: 2012/06/22;
- Sensor-Surface: (Fix Surface)
- Electronics: DAE3 Sn579; Calibrated: 2012/04/27
- Phantom: HAC Test Arch with AMCC; Type: SD HAC P01 BA;
- Measurement SW: DASY52, Version 52.8 (4); SEMCAD X Version 14.6.8 (7028)

**Ch4182/Hearing Aid Compatibility (101x101x1):** Interpolated grid: dx=0.5000 mm, dy=0.5000 mm  
 Device Reference Point: 0, 0, -6.3 mm  
 Reference Value = 74.19 V/m; Power Drift = -0.01 dB  
 Applied MIF = -27.23 dB  
 RF audio interference level = 7.92 dBV/m  
**Emission category: M4**

|                                       |                                       |                                       |
|---------------------------------------|---------------------------------------|---------------------------------------|
| Grid 1 <b>M4</b><br><b>7.05 dBV/m</b> | Grid 2 <b>M4</b><br><b>7.62 dBV/m</b> | Grid 3 <b>M4</b><br><b>7.37 dBV/m</b> |
| Grid 4 <b>M4</b><br><b>7.27 dBV/m</b> | Grid 5 <b>M4</b><br><b>7.92 dBV/m</b> | Grid 6 <b>M4</b><br><b>7.71 dBV/m</b> |
| Grid 7 <b>M4</b><br><b>7.11 dBV/m</b> | Grid 8 <b>M4</b><br><b>7.81 dBV/m</b> | Grid 9 <b>M4</b><br><b>7.61 dBV/m</b> |



### P12 E-Field\_WCDMA V\_Ch4233

**DUT: 121029C13**

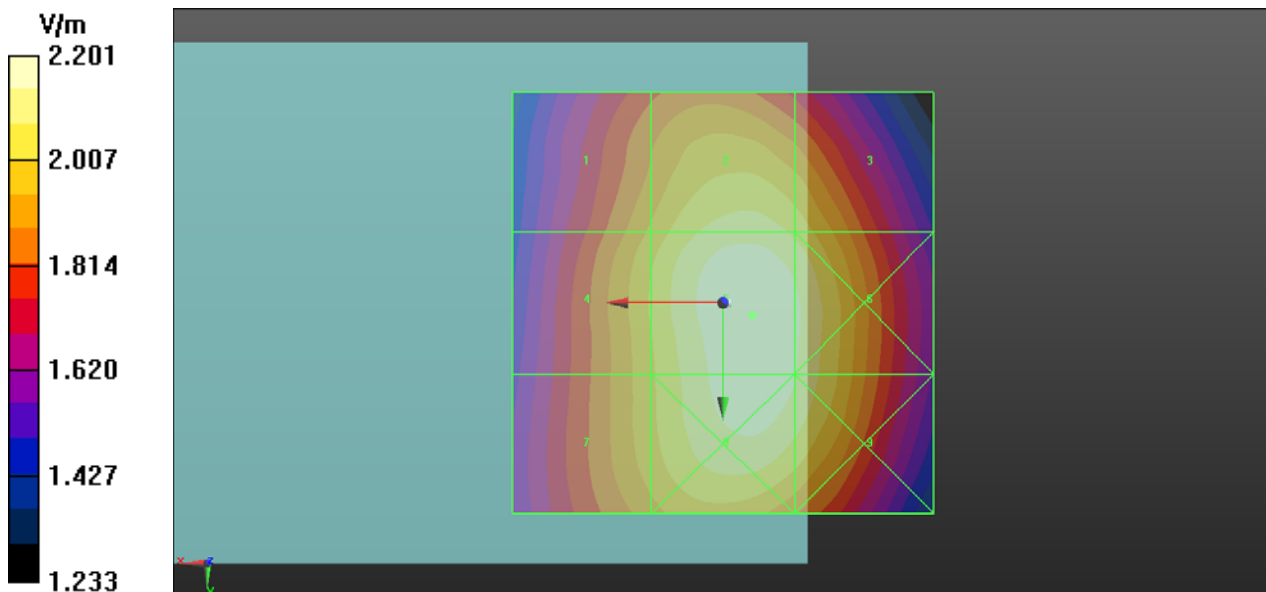
Communication System: UMTS-FDD (WCDMA); Frequency: 846.6 MHz; Duty Cycle: 1:1.95434  
 Medium: Air Medium parameters used:  $\sigma = 0 \text{ S/m}$ ,  $\epsilon_r = 1$ ;  $\rho = 0 \text{ kg/m}^3$   
 Ambient Temperature : 21.8 °C

DASY5 Configuration:

- Probe: ER3DV6 - SN2445; ConvF(1, 1, 1); Calibrated: 2012/06/22;
- Sensor-Surface: (Fix Surface)
- Electronics: DAE3 Sn579; Calibrated: 2012/04/27
- Phantom: HAC Test Arch with AMCC; Type: SD HAC P01 BA;
- Measurement SW: DASY52, Version 52.8 (4); SEMCAD X Version 14.6.8 (7028)

**Ch4233/Hearing Aid Compatibility (101x101x1):** Interpolated grid: dx=0.5000 mm, dy=0.5000 mm  
 Device Reference Point: 0, 0, -6.3 mm  
 Reference Value = 65.25 V/m; Power Drift = 0.02 dB  
 Applied MIF = -27.23 dB  
 RF audio interference level = 6.85 dBV/m  
**Emission category: M4**

|                                       |                                       |                                       |
|---------------------------------------|---------------------------------------|---------------------------------------|
| Grid 1 <b>M4</b><br><b>5.84 dBV/m</b> | Grid 2 <b>M4</b><br><b>6.49 dBV/m</b> | Grid 3 <b>M4</b><br><b>6.27 dBV/m</b> |
| Grid 4 <b>M4</b><br><b>6.09 dBV/m</b> | Grid 5 <b>M4</b><br><b>6.85 dBV/m</b> | Grid 6 <b>M4</b><br><b>6.66 dBV/m</b> |
| Grid 7 <b>M4</b><br><b>6.01 dBV/m</b> | Grid 8 <b>M4</b><br><b>6.81 dBV/m</b> | Grid 9 <b>M4</b><br><b>6.61 dBV/m</b> |





## **Appendix C. Calibration Certificate for Probe and Dipole**

The SPEAG calibration certificates are shown as follows.



Accredited by the Swiss Accreditation Service (SAS)  
The Swiss Accreditation Service is one of the signatories to the EA  
Multilateral Agreement for the recognition of calibration certificates

Accreditation No.: **SCS 108**

Client **B.V. ADT (Auden)**

Certificate No: **CD835V3-1041\_Jun12**

## CALIBRATION CERTIFICATE

Object **CD835V3 - SN: 1041**

Calibration procedure(s) **QA CAL-20.v6  
Calibration procedure for dipoles in air**

Calibration date: **June 14, 2012**

This calibration certificate documents the traceability to national standards, which realize the physical units of measurements (SI).  
The measurements and the uncertainties with confidence probability are given on the following pages and are part of the certificate.

All calibrations have been conducted in the closed laboratory facility: environment temperature (22 ± 3)°C and humidity < 70%.

Calibration Equipment used (M&TE critical for calibration)

| Primary Standards     | ID #       | Cal Date (Certificate No.)     | Scheduled Calibration |
|-----------------------|------------|--------------------------------|-----------------------|
| Power meter EPM-442A  | GB37480704 | 05-Oct-11 (No. 217-01451)      | Oct-12                |
| Power sensor HP 8481A | US37292783 | 05-Oct-11 ( No. 217-01451)     | Oct-12                |
| Probe ER3DV6          | SN: 2336   | 29-Dec-11 (No. ER3-2336_Dec11) | Dec-12                |
| Probe H3DV6           | SN: 6065   | 29-Dec-11 (No. H3-6065_Dec11)  | Dec-12                |
| DAE4                  | SN: 781    | 29-May-12 (No. DAE4-781_May12) | May-13                |

| Secondary Standards       | ID #           | Check Date (in house)             | Scheduled Check        |
|---------------------------|----------------|-----------------------------------|------------------------|
| Power meter Agilent 4419B | SN: GB42420191 | 09-Oct-09 (in house check Oct-11) | In house check: Oct-12 |
| Power sensor HP 8482H     | SN: 3318A09450 | 09-Oct-09 (in house check Oct-11) | In house check: Oct-12 |
| Power sensor HP 8482A     | SN: US37295597 | 09-Oct-09 (in house check Oct-11) | In house check: Oct-12 |
| Network Analyzer HP 8753E | US37390585     | 18-Oct-01 (in house check Oct-11) | In house check: Oct-12 |
| RF generator E4433B       | MY 41000675    | 03-Nov-04 (in house check Oct-11) | In house check: Oct-13 |

Calibrated by: **Claudio Leubler**      Name: Claudio Leubler      Function: Laboratory Technician

Signature

Approved by: **Katja Pokovic**      Name: Katja Pokovic      Function: Technical Manager

Issued: June 15, 2012

This calibration certificate shall not be reproduced except in full without written approval of the laboratory.



Accredited by the Swiss Accreditation Service (SAS)

The Swiss Accreditation Service is one of the signatories to the EA  
Multilateral Agreement for the recognition of calibration certificates

## References

- [1] ANSI-C63.19-2011  
American National Standard, Methods of Measurement of Compatibility between Wireless Communications  
Devices and Hearing Aids.

## Methods Applied and Interpretation of Parameters:

- **Coordinate System:** y-axis is in the direction of the dipole arms. z-axis is from the basis of the antenna (mounted on the table) towards its feed point between the two dipole arms. x-axis is normal to the other axes. In coincidence with the standards [1], the measurement planes (probe sensor center) are selected to be at a distance of 15 mm above the top metal edge of the dipole arms.
- **Measurement Conditions:** Further details are available from the hardcopies at the end of the certificate. All figures stated in the certificate are valid at the frequency indicated. The forward power to the dipole connector is set with a calibrated power meter connected and monitored with an auxiliary power meter connected to a directional coupler. While the dipole under test is connected, the forward power is adjusted to the same level.
- **Antenna Positioning:** The dipole is mounted on a HAC Test Arch phantom using the matching dipole positioner with the arms horizontal and the feeding cable coming from the floor. The measurements are performed in a shielded room with absorbers around the setup to reduce the reflections. It is verified before the mounting of the dipole under the Test Arch phantom, that its arms are perfectly in a line. It is installed on the HAC dipole positioner with its arms parallel below the dielectric reference wire and able to move elastically in vertical direction without changing its relative position to the top center of the Test Arch phantom. The vertical distance to the probe is adjusted after dipole mounting with a DASYS5 Surface Check job. Before the measurement, the distance between phantom surface and probe tip is verified. The proper measurement distance is selected by choosing the matching section of the HAC Test Arch phantom with the proper device reference point (upper surface of the dipole) and the matching grid reference point (tip of the probe) considering the probe sensor offset. The vertical distance to the probe is essential for the accuracy.
- **Feed Point Impedance and Return Loss:** These parameters are measured using a HP 8753E Vector Network Analyzer. The impedance is specified at the SMA connector of the dipole. The influence of reflections was eliminated by applying the averaging function while moving the dipole in the air, at least 70cm away from any obstacles.
- **E-field distribution:** E field is measured in the x-y-plane with an isotropic ER3D-field probe with 100 mW forward power to the antenna feed point. In accordance with [1], the scan area is 20mm wide, its length exceeds the dipole arm length (180 or 90mm). The sensor center is 15 mm (in z) above the metal top of the dipole arms. Two 3D maxima are available near the end of the dipole arms. Assuming the dipole arms are perfectly in one line, the average of these two maxima (in subgrid 2 and subgrid 8) is determined to compensate for any non-parallelity to the measurement plane as well as the sensor displacement. The E-field value stated as calibration value represents the maximum of the interpolated 3D-E-field, in the plane above the dipole surface.

The reported uncertainty of measurement is stated as the standard uncertainty of measurement multiplied by the coverage factor  $k=2$ , which for a normal distribution corresponds to a coverage probability of approximately 95%.

## Measurement Conditions

DASY system configuration, as far as not given on page 1.

|   |                        |         |
|---|------------------------|---------|
| <b>DASY Version</b>                       | DASY5                  | V52.8.1 |
| <b>Extrapolation</b>                      | Advanced Extrapolation |         |
| <b>Phantom</b>                            | HAC Test Arch          |         |
| <b>Distance Dipole Top - Probe Center</b> | 15mm                   |         |
| <b>Scan resolution</b>                    | dx, dy = 5 mm          |         |
| <b>Frequency</b>                          | 835 MHz $\pm$ 1 MHz    |         |
| <b>Input power drift</b>                  | < 0.05 dB              |         |

## Maximum Field values at 835 MHz

| <b>E-field 15 mm above dipole surface</b> | <b>condition</b>   | <b>Interpolated maximum</b>                      |
|---|--------------------|--|
| Maximum measured above high end           | 100 mW input power | 106.7 V / m                                      |
| Maximum measured above low end            | 100 mW input power | 103.4 V / m                                      |
| Averaged maximum above arm                | 100 mW input power | <b>105.1 V / m <math>\pm</math> 12.8 % (k=2)</b> |

## Appendix

### Antenna Parameters

| <b>Frequency</b> | <b>Return Loss</b> | <b>Impedance</b>                |
|------------------|--------------------|---------------------------------|
| 800 MHz          | 14.6 dB            | 40.8 $\Omega$ - 14.3 j $\Omega$ |
| 835 MHz          | 25.3 dB            | 48.9 $\Omega$ + 5.3 j $\Omega$  |
| 900 MHz          | 17.5 dB            | 55.4 $\Omega$ - 13.1 j $\Omega$ |
| 950 MHz          | 16.8 dB            | 45.2 $\Omega$ + 13.0 j $\Omega$ |
| 960 MHz          | 12.9 dB            | 56.8 $\Omega$ + 23.8 j $\Omega$ |

### 3.2 Antenna Design and Handling

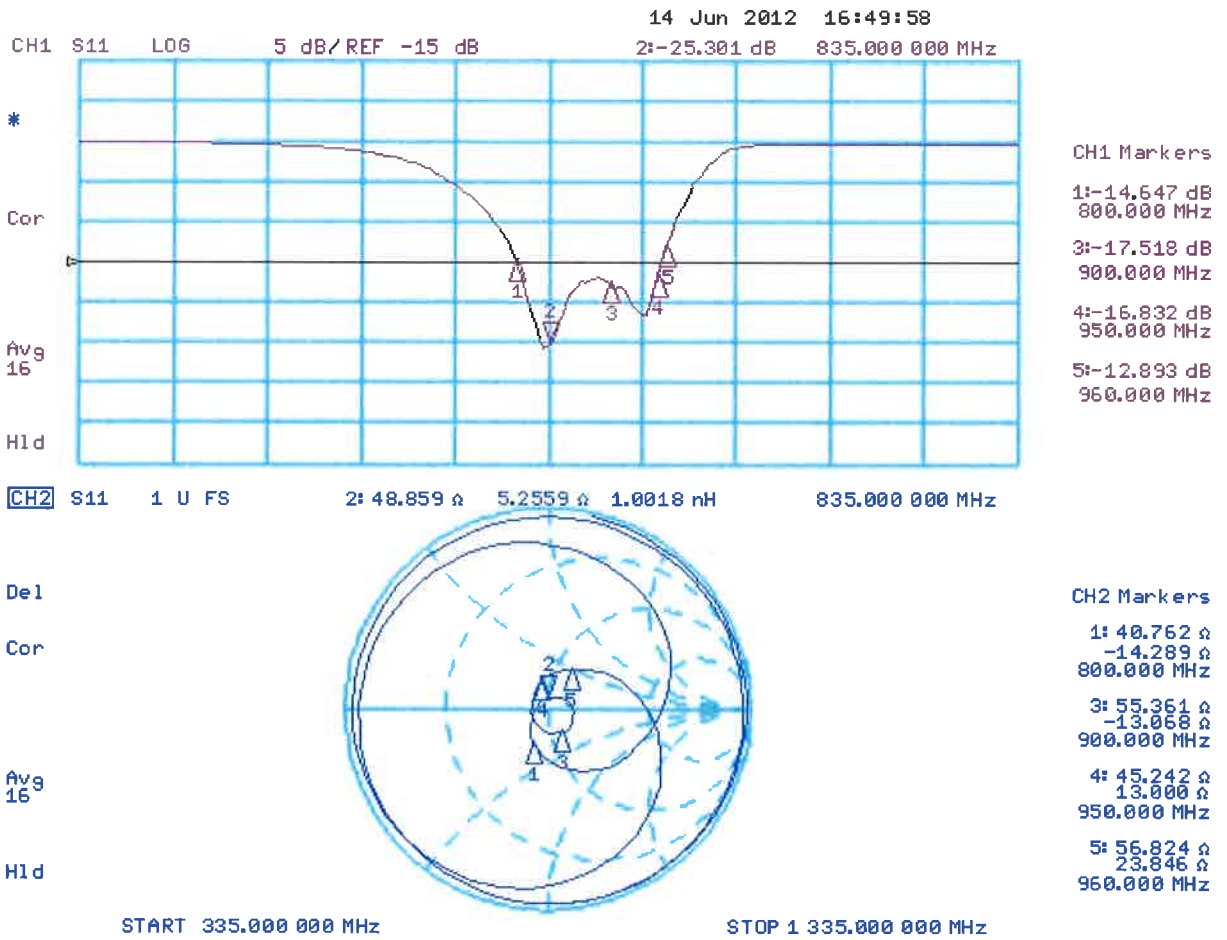
The calibration dipole has a symmetric geometry with a built-in two stub matching network, which leads to the enhanced bandwidth.

The dipole is built of standard semirigid coaxial cable. The internal matching line is open ended. The antenna is therefore open for DC signals.

Do not apply force to dipole arms, as they are liable to bend. The soldered connections near the feedpoint may be damaged. After excessive mechanical stress or overheating, check the impedance characteristics to ensure that the internal matching network is not affected.

After long term use with 40W radiated power, only a slight warming of the dipole near the feedpoint can be measured.

# Impedance Measurement Plot



## DASY4 E-field Result

Date: 14.06.2012

Test Laboratory: SPEAG Lab2

**DUT: HAC-Dipole 835 MHz; Type: CD835V3; Serial: CD835V3 - SN: 1041**

Communication System: CW; Frequency: 835 MHz  
Medium parameters used:  $\sigma = 0$  mho/m,  $\epsilon_r = 1$ ;  $\rho = 1000$  kg/m<sup>3</sup>  
Phantom section: RF Section  
Measurement Standard: DASY5 (IEEE/IEC/ANSI C63.19-2011)

DASY52 Configuration:

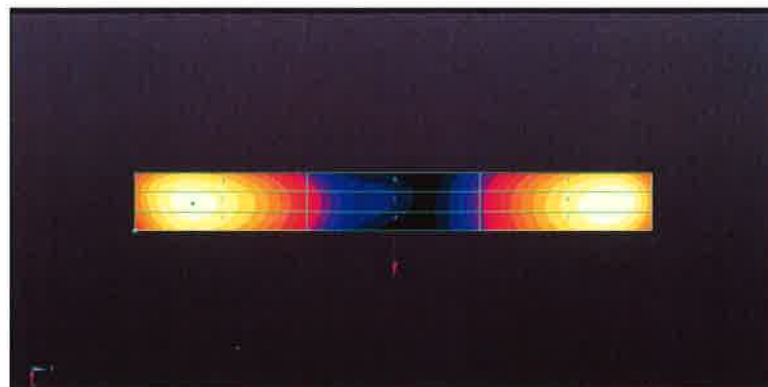
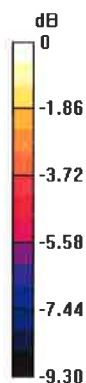
- Probe: ER3DV6 - SN2336; ConvF(1, 1, 1); Calibrated: 29.12.2011;
- Sensor-Surface: (Fix Surface)
- Electronics: DAE4 Sn781; Calibrated: 29.05.2012
- Phantom: HAC Test Arch with AMCC; Type: SD HAC P01 BA; Serial: 1070
- DASY52 52.8.1(838); SEMCAD X 14.6.5(6469)

**Dipole E-Field measurement @ 835MHz/E-Scan - 835MHz d=15mm/Hearing Aid Compatibility Test (41x361x1):**

Measurement grid: dx=5mm, dy=5mm  
Device Reference Point: 0, 0, -6.3 mm  
Reference Value = 107.3 V/m; Power Drift = 0.02 dB  
PMR not calibrated. PMF = 1.000 is applied.  
E-field emissions = 106.7 V/m  
**Near-field category: M4 (AWF 0 dB)**

PMF scaled E-field

|                        |                        |                        |
|------------------------|------------------------|------------------------|
| Grid 1 M4<br>102.5 V/m | Grid 2 M4<br>103.4 V/m | Grid 3 M4<br>101.3 V/m |
| Grid 4 M4<br>61.93 V/m | Grid 5 M4<br>62.40 V/m | Grid 6 M4<br>60.92 V/m |
| Grid 7 M4<br>105.4 V/m | Grid 8 M4<br>106.7 V/m | Grid 9 M4<br>103.5 V/m |



0 dB = 106.7 V/m = 40.56 dB V/m





Accredited by the Swiss Accreditation Service (SAS)  
 The Swiss Accreditation Service is one of the signatories to the EA  
 Multilateral Agreement for the recognition of calibration certificates

Accreditation No.: **SCS 108**

Client **B.V. ADT (Auden)**

Certificate No: **CD1880V3-1032\_Apr12**

## CALIBRATION CERTIFICATE

Object **CD1880V3 - SN: 1032**

Calibration procedure(s) **QA CAL-20.v6  
 Calibration procedure for dipoles in air**

Calibration date: **April 26, 2012**

This calibration certificate documents the traceability to national standards, which realize the physical units of measurements (SI).  
 The measurements and the uncertainties with confidence probability are given on the following pages and are part of the certificate.

All calibrations have been conducted in the closed laboratory facility: environment temperature (22 ± 3)°C and humidity < 70%.

Calibration Equipment used (M&TE critical for calibration)

| Primary Standards     | ID #       | Cal Date (Certificate No.)     | Scheduled Calibration |
|-----------------------|------------|--------------------------------|-----------------------|
| Power meter EPM-442A  | GB37480704 | 05-Oct-11 (No. 217-01451)      | Oct-12                |
| Power sensor HP 8481A | US37292783 | 05-Oct-11 ( No. 217-01451)     | Oct-12                |
| Probe ER3DV6          | SN: 2336   | 29-Dec-11 (No. ER3-2336_Dec11) | Dec-12                |
| Probe H3DV6           | SN: 6065   | 29-Dec-11 (No. H3-6065_Dec11)  | Dec-12                |
| DAE4                  | SN: 781    | 25-Apr-12 (No. DAE4-781_Apr12) | Apr-13                |

| Secondary Standards       | ID #           | Check Date (in house)             | Scheduled Check        |
|---------------------------|----------------|-----------------------------------|------------------------|
| Power meter Agilent 4419B | SN: GB42420191 | 09-Oct-09 (in house check Oct-11) | In house check: Oct-12 |
| Power sensor HP 8482H     | SN: 3318A09450 | 09-Oct-09 (in house check Oct-11) | In house check: Oct-12 |
| Power sensor HP 8482A     | SN: US37295597 | 09-Oct-09 (in house check Oct-11) | In house check: Oct-12 |
| Network Analyzer HP 8753E | US37390585     | 18-Oct-01 (in house check Oct-11) | In house check: Oct-12 |
| RF generator E4433B       | MY 41000675    | 03-Nov-04 (in house check Oct-11) | In house check: Oct-13 |

|                |                 |                       |                  |
|----------------|-----------------|-----------------------|------------------|
|                | <b>Name</b>     | <b>Function</b>       | <b>Signature</b> |
| Calibrated by: | Claudio Leubler | Laboratory Technician |                  |
| Approved by:   | Fin Bornholt    | R&D Director          |                  |

Issued: April 27, 2012

This calibration certificate shall not be reproduced except in full without written approval of the laboratory.



Accredited by the Swiss Accreditation Service (SAS)  
The Swiss Accreditation Service is one of the signatories to the EA  
Multilateral Agreement for the recognition of calibration certificates

Accreditation No.: **SCS 108**

## References

- [1] ANSI-C63.19-2007  
American National Standard for Methods of Measurement of Compatibility between Wireless Communications Devices and Hearing Aids.
- [2] ANSI-C63.19-2011  
American National Standard, Methods of Measurement of Compatibility between Wireless Communications Devices and Hearing Aids.

## Methods Applied and Interpretation of Parameters:

- *Coordinate System:* y-axis is in the direction of the dipole arms. z-axis is from the basis of the antenna (mounted on the table) towards its feed point between the two dipole arms. x-axis is normal to the other axes. In coincidence with the standards [1], the measurement planes (probe sensor center) are selected to be at a distance of 10 mm (15 mm for [2]) above the top metal edge of the dipole arms.
- *Measurement Conditions:* Further details are available from the hardcopies at the end of the certificate. All figures stated in the certificate are valid at the frequency indicated. The forward power to the dipole connector is set with a calibrated power meter connected and monitored with an auxiliary power meter connected to a directional coupler. While the dipole under test is connected, the forward power is adjusted to the same level.
- *Antenna Positioning:* The dipole is mounted on a HAC Test Arch phantom using the matching dipole positioner with the arms horizontal and the feeding cable coming from the floor. The measurements are performed in a shielded room with absorbers around the setup to reduce the reflections. It is verified before the mounting of the dipole under the Test Arch phantom, that its arms are perfectly in a line. It is installed on the HAC dipole positioner with its arms parallel below the dielectric reference wire and able to move elastically in vertical direction without changing its relative position to the top center of the Test Arch phantom. The vertical distance to the probe is adjusted after dipole mounting with a DASY5 Surface Check job. Before the measurement, the distance between phantom surface and probe tip is verified. The proper measurement distance is selected by choosing the matching section of the HAC Test Arch phantom with the proper device reference point (upper surface of the dipole) and the matching grid reference point (tip of the probe) considering the probe sensor offset. The vertical distance to the probe is essential for the accuracy.
- *Feed Point Impedance and Return Loss:* These parameters are measured using a HP 8753E Vector Network Analyzer. The impedance is specified at the SMA connector of the dipole. The influence of reflections was eliminating by applying the averaging function while moving the dipole in the air, at least 70cm away from any obstacles.
- *E-field distribution:* E field is measured in the x-y-plane with an isotropic ER3D-field probe with 100 mW forward power to the antenna feed point. In accordance with [1] and [2], the scan area is 20mm wide, its length exceeds the dipole arm length (180 or 90mm). The sensor center is 10 mm (15 mm for [2]) (in z) above the metal top of the dipole arms. Two 3D maxima are available near the end of the dipole arms. Assuming the dipole arms are perfectly in one line, the average of these two maxima (in subgrid 2 and subgrid 8) is determined to compensate for any non-parallelity to the measurement plane as well as the sensor displacement. The E-field value stated as calibration value represents the maximum of the interpolated 3D-E-field, in the plane above the dipole surface.
- *H-field distribution:* H-field is measured with an isotropic H-field probe with 100mW forward power to the antenna feed point, in the x-y-plane. The scan area and sensor distance is equivalent to the E-field scan. The maximum of the field is available at the center (subgrid 5) above the feed point. The H-field value stated as calibration value represents the maximum of the interpolated H-field, 10mm above the dipole surface at the feed point.

## Measurement Conditions

DASY system configuration, as far as not given on page 1.

|   |                        |         |
|---|------------------------|---------|
| <b>DASY Version</b>                       | DASY5                  | V52.8.1 |
| <b>Extrapolation</b>                      | Advanced Extrapolation |         |
| <b>Phantom</b>                            | HAC Test Arch          |         |
| <b>Distance Dipole Top - Probe Center</b> | 10mm<br>15mm           |         |
| <b>Scan resolution</b>                    | dx, dy = 5 mm          |         |
| <b>Frequency</b>                          | 1880 MHz $\pm$ 1 MHz   |         |
| <b>Input power drift</b>                  | < 0.05 dB              |         |

## Maximum Field values at 1880 MHz

| <b>H-field 10 mm above dipole surface</b> | condition          | <b>interpolated maximum</b>                     |
|---|--------------------|---|
| Maximum measured                          | 100 mW input power | <b>0.461 A / m <math>\pm</math> 8.2 % (k=2)</b> |

| <b>E-field 10 mm above dipole surface</b> | condition          | <b>Interpolated maximum</b>                      |
|---|--------------------|--|
| Maximum measured above high end           | 100 mW input power | 142.2 V / m                                      |
| Maximum measured above low end            | 100 mW input power | 138.0 V / m                                      |
| Averaged maximum above arm                | 100 mW input power | <b>140.1 V / m <math>\pm</math> 12.8 % (k=2)</b> |

| <b>E-field 15 mm above dipole surface</b> | condition          | <b>Interpolated maximum</b>                     |
|---|--------------------|---|
| Maximum measured above high end           | 100 mW input power | 88.6 V / m                                      |
| Maximum measured above low end            | 100 mW input power | 87.8 V / m                                      |
| Averaged maximum above arm                | 100 mW input power | <b>88.2 V / m <math>\pm</math> 12.8 % (k=2)</b> |

The reported uncertainty of measurement is stated as the standard uncertainty of measurement multiplied by the coverage factor k=2, which for a normal distribution corresponds to a coverage probability of approximately 95%.

## Appendix

### Antenna Parameters

| Frequency | Return Loss | Impedance                      |
|-----------|-------------|--------------------------------|
| 1730 MHz  | 24.9 dB     | 50.9 $\Omega$ + 5.7 j $\Omega$ |
| 1880 MHz  | 20.8 dB     | 51.6 $\Omega$ + 9.2 j $\Omega$ |
| 1900 MHz  | 21.0 dB     | 54.4 $\Omega$ + 8.2 j $\Omega$ |
| 1950 MHz  | 27.6 dB     | 54.3 $\Omega$ + 0.6 j $\Omega$ |
| 2000 MHz  | 21.8 dB     | 42.8 $\Omega$ + 2.2 j $\Omega$ |

### 3.2 Antenna Design and Handling

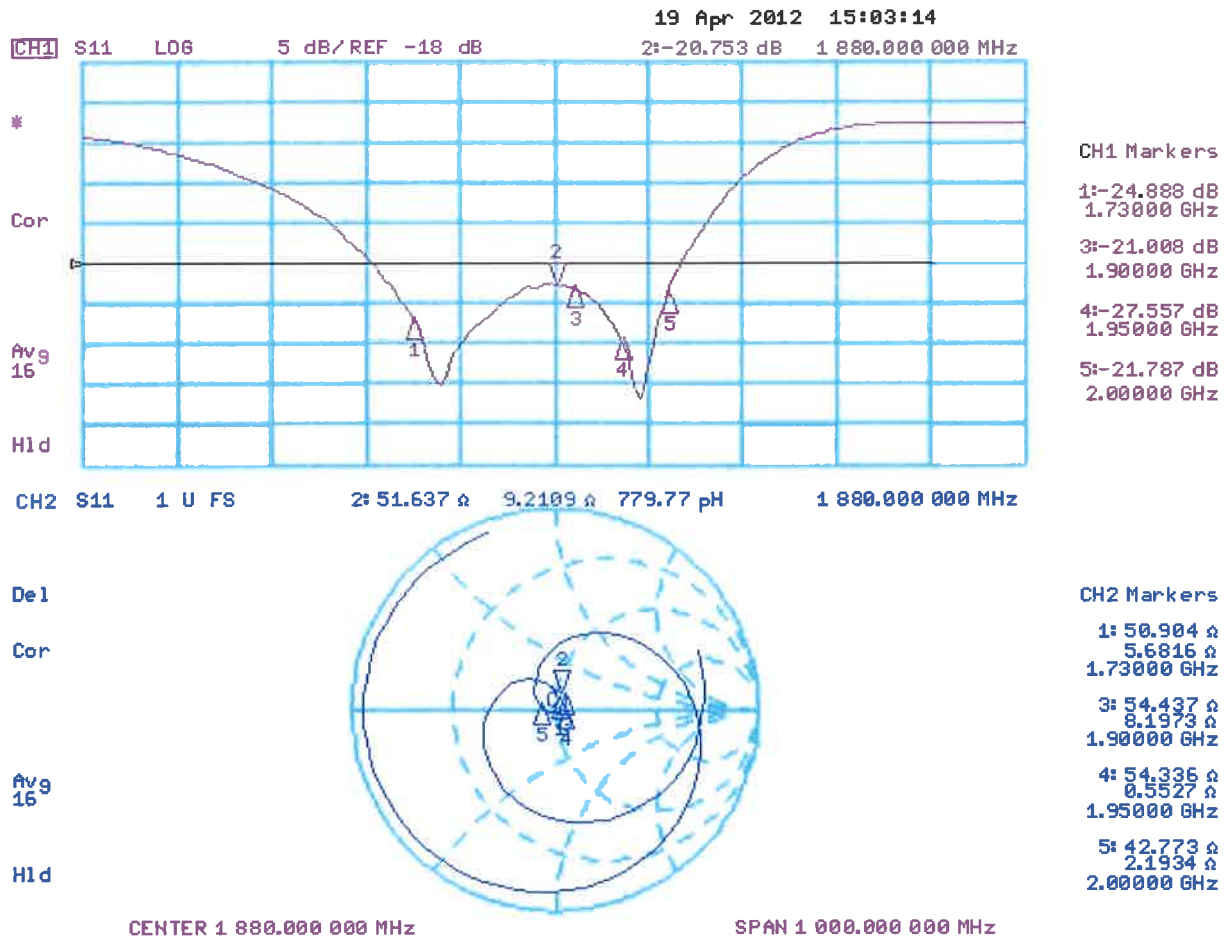
The calibration dipole has a symmetric geometry with a built-in two stub matching network, which leads to the enhanced bandwidth.

The dipole is built of standard semirigid coaxial cable. The internal matching line is open ended. The antenna is therefore open for DC signals.

Do not apply force to dipole arms, as they are liable to bend. The soldered connections near the feedpoint may be damaged. After excessive mechanical stress or overheating, check the impedance characteristics to ensure that the internal matching network is not affected.

After long term use with 40W radiated power, only a slight warming of the dipole near the feedpoint can be measured.

# Impedance Measurement Plot



**Dipole E-Field measurement @ 1880MHz/E-Scan - 1880MHz d=15mm/Hearing Aid Compatibility Test (41x181x1):**

Measurement grid: dx=5mm, dy=5mm

Device Reference Point: 0, 0, -6.3 mm

Reference Value = 157.1 V/m; Power Drift = -0.00 dB

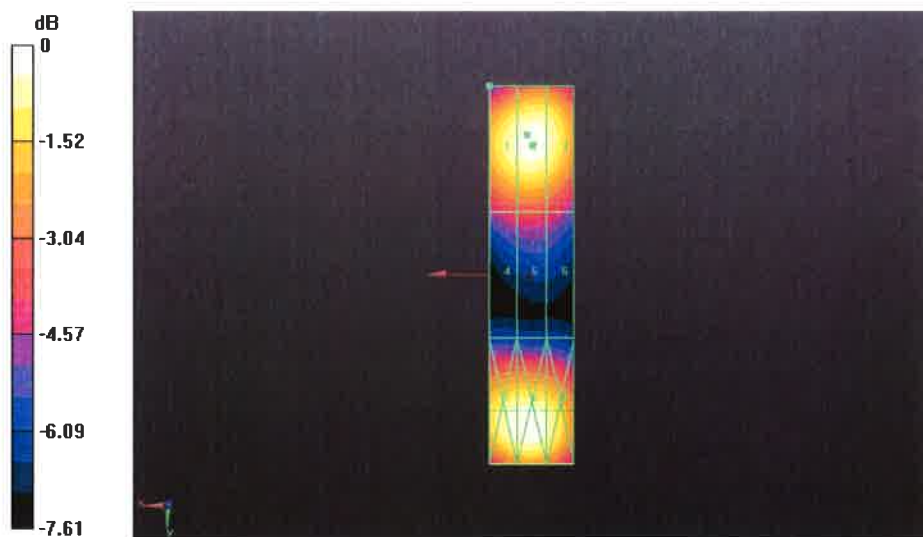
PMR not calibrated. PMF = 1.000 is applied.

E-field emissions = 87.77 V/m

**Near-field category: M3 (AWF 0 dB)**

PMF scaled E-field

|                        |                        |                        |
|------------------------|------------------------|------------------------|
| Grid 1 M3<br>86.19 V/m | Grid 2 M3<br>87.77 V/m | Grid 3 M3<br>86.19 V/m |
| Grid 4 M3<br>67.85 V/m | Grid 5 M3<br>68.46 V/m | Grid 6 M3<br>67.31 V/m |
| Grid 7 M3<br>87.74 V/m | Grid 8 M3<br>88.63 V/m | Grid 9 M3<br>86.31 V/m |



0 dB = 142.2 V/m = 43.06 dB V/m



Accredited by the Swiss Accreditation Service (SAS)

Accreditation No.: **SCS 108**

The Swiss Accreditation Service is one of the signatories to the EA  
Multilateral Agreement for the recognition of calibration certificates

Client **B. V. ADT (Auden)**

Certificate No: **ER3-2445\_Jun12**

## CALIBRATION CERTIFICATE

Object **ER3DV6 - SN:2445**

Calibration procedure(s) **QA CAL-02.v6, QA CAL-25.v4  
Calibration procedure for E-field probes optimized for close near field  
evaluations in air**



Calibration date: **June 22, 2012**

This calibration certificate documents the traceability to national standards, which realize the physical units of measurements (SI).  
The measurements and the uncertainties with confidence probability are given on the following pages and are part of the certificate.

All calibrations have been conducted in the closed laboratory facility: environment temperature (22 ± 3)°C and humidity < 70%.

Calibration Equipment used (M&TE critical for calibration)

| Primary Standards          | ID              | Cal Date (Certificate No.)        | Scheduled Calibration  |
|----------------------------|-----------------|-----------------------------------|------------------------|
| Power meter E4419B         | GB41293874      | 29-Mar-12 (No. 217-01508)         | Apr-13                 |
| Power sensor E4412A        | MY41498087      | 29-Mar-12 (No. 217-01508)         | Apr-13                 |
| Reference 3 dB Attenuator  | SN: S5054 (3c)  | 27-Mar-12 (No. 217-01531)         | Apr-13                 |
| Reference 20 dB Attenuator | SN: S5086 (20b) | 27-Mar-12 (No. 217-01529)         | Apr-13                 |
| Reference 30 dB Attenuator | SN: S5129 (30b) | 27-Mar-12 (No. 217-01532)         | Apr-13                 |
| Reference Probe ER3DV6     | SN: 2328        | 11-Oct-11 (No. ER3-2328_Oct11)    | Oct-12                 |
| DAE4                       | SN: 789         | 30-Jan-12 (No. DAE4-789_Jan12)    | Jan-13                 |
|                            |                 |                                   |                        |
| Secondary Standards        | ID              | Check Date (in house)             | Scheduled Check        |
| RF generator HP 8648C      | US3642U01700    | 4-Aug-99 (in house check Apr-11)  | In house check: Apr-13 |
| Network Analyzer HP 8753E  | US37390585      | 18-Oct-01 (in house check Oct-11) | In house check: Oct-12 |

|   |                                |  |  |
|---|--------------------------------|--|--|
| Calibrated by:  | Name<br><b>Claudio Leubler</b> | Function<br><b>Laboratory Technician</b> | Signature<br> |
| Approved by:  | <b>Katja Pokovic</b>           | <b>Technical Manager</b>                 |               |
|   |                                |  | Issued: June 22, 2012  |
| This calibration certificate shall not be reproduced except in full without written approval of the laboratory. |                                |  |  |



Accredited by the Swiss Accreditation Service (SAS)

Accreditation No.: **SCS 108**

The Swiss Accreditation Service is one of the signatories to the EA  
Multilateral Agreement for the recognition of calibration certificates

### Glossary:

|                          |   |
|--------------------------|---|
| NORM <sub>x,y,z</sub>    | sensitivity in free space   |
| DCP                      | diode compression point   |
| CF                       | crest factor (1/duty_cycle) of the RF signal  |
| A, B, C                  | modulation dependent linearization parameters   |
| Polarization $\varphi$   | $\varphi$ rotation around probe axis  |
| Polarization $\vartheta$ | $\vartheta$ rotation around an axis that is in the plane normal to probe axis (at measurement center),<br>i.e., $\vartheta = 0$ is normal to probe axis |
| Connector Angle          | information used in DASY system to align probe sensor X to the robot coordinate system  |

### Calibration is Performed According to the Following Standards:

- IEEE Std 1309-2005, "IEEE Standard for calibration of electromagnetic field sensors and probes, excluding antennas, from 9 kHz to 40 GHz", December 2005
- CTIA Test Plan for Hearing Aid Compatibility, April 2010.

### Methods Applied and Interpretation of Parameters:

- NORM<sub>x,y,z</sub>**: Assessed for E-field polarization  $\vartheta = 0$  for XY sensors and  $\vartheta = 90$  for Z sensor ( $f \leq 900$  MHz in TEM-cell;  $f > 1800$  MHz: R22 waveguide).
- NORM(f)<sub>x,y,z</sub>** = NORM<sub>x,y,z</sub> \* frequency\_response (see Frequency Response Chart).
- DCP<sub>x,y,z</sub>**: DCP are numerical linearization parameters assessed based on the data of power sweep with CW signal (no uncertainty required). DCP does not depend on frequency nor media.
- PAR**: PAR is the Peak to Average Ratio that is not calibrated but determined based on the signal characteristics
- A<sub>x,y,z</sub>; B<sub>x,y,z</sub>; C<sub>x,y,z</sub>; VR<sub>x,y,z</sub>; A, B, C** are numerical linearization parameters assessed based on the data of power sweep for specific modulation signal. The parameters do not depend on frequency nor media. VR is the maximum calibration range expressed in RMS voltage across the diode.
- Spherical isotropy (3D deviation from isotropy)**: in a locally homogeneous field realized using an open waveguide setup.
- Sensor Offset**: The sensor offset corresponds to the offset of virtual measurement center from the probe tip (on probe axis). No tolerance required.
- Connector Angle**: The angle is assessed using the information gained by determining the NORM<sub>x</sub> (no uncertainty required).



# Probe ER3DV6

## SN:2445

Manufactured: January 22, 2008  
Calibrated: June 22, 2012

**Calibrated for DASY/EASY Systems**  
(Note: non-compatible with DASY2 system!)

# DASY/EASY - Parameters of Probe: ER3DV6 - SN:2445

## Basic Calibration Parameters

|                          | Sensor X | Sensor Y | Sensor Z | Unc (k=2)     |
|--------------------------|----------|----------|----------|---------------|
| Norm ( $\mu V/(V/m)^2$ ) | 1.48     | 1.70     | 1.83     | $\pm 10.1 \%$ |
| DCP (mV) <sup>b</sup>    | 98.3     | 98.0     | 101.5    |               |

## Modulation Calibration Parameters

| UID   | Communication System Name                           | PAR   |   | A dB  | B dB  | C dB | VR mV | Unc <sup>E</sup> (k=2) |
|-------|---|-------|---|-------|-------|------|-------|------------------------|
| 0     | CW  | 0.00  | X | 0.00  | 0.00  | 1.00 | 189.0 | $\pm 3.0 \%$           |
|       |   |       | Y | 0.00  | 0.00  | 1.00 | 161.6 |                        |
|       |   |       | Z | 0.00  | 0.00  | 1.00 | 150.1 |                        |
| 10012 | IEEE 802.11b WiFi 2.4 GHz (DSSS, 1 Mbps)            | 1.87  | X | 2.68  | 66.6  | 18.0 | 113.3 | $\pm 1.2 \%$           |
|       |   |       | Y | 2.75  | 67.3  | 18.5 | 134.4 |                        |
|       |   |       | Z | 3.45  | 71.8  | 20.6 | 123.0 |                        |
| 10013 | IEEE 802.11g WiFi 2.4 GHz (DSSS-OFDM, 6 Mbps)       | 9.47  | X | 11.72 | 71.8  | 24.4 | 110.7 | $\pm 3.5 \%$           |
|       |   |       | Y | 11.96 | 72.6  | 24.9 | 134.8 |                        |
|       |   |       | Z | 11.80 | 72.0  | 24.2 | 122.0 |                        |
| 10062 | IEEE 802.11a/h WiFi 5 GHz (OFDM, 6 Mbps)            | 8.69  | X | 10.93 | 70.5  | 23.1 | 111.6 | $\pm 3.0 \%$           |
|       |   |       | Y | 11.18 | 71.2  | 23.5 | 136.6 |                        |
|       |   |       | Z | 10.78 | 70.2  | 22.7 | 120.9 |                        |
| 10114 | IEEE 802.11n (HT Greenfield, 13.5 Mbps, BPSK)       | 8.10  | X | 10.57 | 69.7  | 22.1 | 114.5 | $\pm 4.9 \%$           |
|       |   |       | Y | 11.09 | 71.4  | 23.3 | 140.0 |                        |
|       |   |       | Z | 10.48 | 69.6  | 22.0 | 123.9 |                        |
| 10011 | UMTS-FDD (WCDMA)                                    | 3.40  | X | 3.24  | 64.1  | 17.0 | 110.1 | $\pm 0.7 \%$           |
|       |   |       | Y | 3.39  | 65.0  | 17.6 | 130.2 |                        |
|       |   |       | Z | 3.30  | 64.9  | 17.4 | 117.2 |                        |
| 10021 | GSM-FDD (TDMA, GMSK)                                | 9.40  | X | 17.79 | 99.7  | 28.4 | 147.3 | $\pm 2.5 \%$           |
|       |   |       | Y | 13.58 | 97.6  | 27.9 | 115.6 |                        |
|       |   |       | Z | 13.80 | 92.0  | 25.6 | 120.2 |                        |
| 10039 | CDMA2000 (1xRTT, RC1)                               | 4.57  | X | 4.42  | 64.9  | 17.9 | 111.5 | $\pm 1.2 \%$           |
|       |   |       | Y | 4.64  | 66.3  | 18.8 | 131.9 |                        |
|       |   |       | Z | 4.40  | 65.4  | 18.2 | 117.5 |                        |
| 10056 | UMTS-TDD (TD-SCDMA, 1.28 Mcps)                      | 11.01 | X | 11.49 | 96.6  | 37.3 | 116.8 | $\pm 4.6 \%$           |
|       |   |       | Y | 11.57 | 100.0 | 39.5 | 130.5 |                        |
|       |   |       | Z | 14.18 | 99.0  | 36.9 | 133.6 |                        |
| 10081 | CDMA2000 (1xRTT, RC3)                               | 3.96  | X | 3.63  | 64.4  | 17.5 | 108.7 | $\pm 0.9 \%$           |
|       |   |       | Y | 3.77  | 65.2  | 18.0 | 128.1 |                        |
|       |   |       | Z | 3.66  | 64.9  | 17.7 | 115.1 |                        |
| 10082 | IS-54 / IS-136 FDD (TDMA/FDM, PI/4-DQPSK, Fullrate) | 4.77  | X | 4.12  | 73.4  | 14.2 | 146.7 | $\pm 1.7 \%$           |
|       |   |       | Y | 53.33 | 99.7  | 21.4 | 120.4 |                        |
|       |   |       | Z | 10.52 | 79.8  | 15.8 | 115.1 |                        |
| 10100 | LTE-FDD (SC-FDMA, 100% RB, 20 MHz, QPSK)            | 5.66  | X | 6.22  | 66.7  | 19.3 | 125.0 | $\pm 2.5 \%$           |
|       |   |       | Y | 6.62  | 68.5  | 20.5 | 146.5 |                        |
|       |   |       | Z | 6.23  | 67.0  | 19.4 | 130.8 |                        |

|       |  |      |   |      |      |      |       |        |
|-------|--|------|---|------|------|------|-------|--------|
| 10101 | LTE-FDD (SC-FDMA, 100% RB, 20 MHz, 16-QAM) | 6.41 | X | 7.48 | 67.9 | 20.3 | 132.2 | ±2.7 % |
|       |  |      | Y | 7.29 | 67.4 | 20.1 | 110.4 |        |
|       |  |      | Z | 7.40 | 67.8 | 20.2 | 140.9 |        |
| 10108 | LTE-FDD (SC-FDMA, 100% RB, 10 MHz, QPSK)   | 5.79 | X | 6.20 | 66.8 | 19.6 | 121.8 | ±2.7 % |
|       |  |      | Y | 6.51 | 68.3 | 20.6 | 144.1 |        |
|       |  |      | Z | 6.14 | 66.8 | 19.4 | 129.4 |        |
| 10109 | LTE-FDD (SC-FDMA, 100% RB, 10 MHz, 16-QAM) | 6.42 | X | 7.21 | 67.5 | 20.2 | 128.9 | ±2.7 % |
|       |  |      | Y | 7.04 | 67.1 | 20.0 | 108.0 |        |
|       |  |      | Z | 7.12 | 67.4 | 20.0 | 136.4 |        |
| 10110 | LTE-FDD (SC-FDMA, 100% RB, 5 MHz, QPSK)    | 5.75 | X | 5.90 | 66.3 | 19.3 | 118.9 | ±2.2 % |
|       |  |      | Y | 6.14 | 67.5 | 20.2 | 140.7 |        |
|       |  |      | Z | 5.80 | 66.2 | 19.2 | 125.6 |        |
| 10111 | LTE-FDD (SC-FDMA, 100% RB, 5 MHz, 16-QAM)  | 6.44 | X | 6.99 | 67.4 | 20.2 | 125.4 | ±3.5 % |
|       |  |      | Y | 7.28 | 68.7 | 21.1 | 148.3 |        |
|       |  |      | Z | 6.87 | 67.3 | 20.0 | 132.5 |        |
| 10148 | LTE-FDD (SC-FDMA, 50% RB, 20 MHz, QPSK)    | 5.83 | X | 6.23 | 66.7 | 19.5 | 122.2 | ±2.7 % |
|       |  |      | Y | 6.58 | 68.3 | 20.6 | 144.9 |        |
|       |  |      | Z | 6.19 | 66.7 | 19.4 | 129.4 |        |
| 10149 | LTE-FDD (SC-FDMA, 50% RB, 20 MHz, 16-QAM)  | 6.42 | X | 7.25 | 67.7 | 20.3 | 129.0 | ±3.0 % |
|       |  |      | Y | 7.06 | 67.1 | 20.1 | 108.3 |        |
|       |  |      | Z | 7.10 | 67.3 | 20.0 | 136.5 |        |
| 10154 | LTE-FDD (SC-FDMA, 50% RB, 10 MHz, QPSK)    | 5.76 | X | 5.85 | 66.0 | 19.1 | 119.1 | ±2.2 % |
|       |  |      | Y | 6.13 | 67.4 | 20.1 | 140.9 |        |
|       |  |      | Z | 5.79 | 66.1 | 19.1 | 125.8 |        |
| 10155 | LTE-FDD (SC-FDMA, 50% RB, 10 MHz, 16-QAM)  | 6.43 | X | 6.83 | 66.6 | 19.6 | 125.5 | ±2.5 % |
|       |  |      | Y | 7.10 | 67.8 | 20.4 | 148.9 |        |
|       |  |      | Z | 6.84 | 67.2 | 19.9 | 132.5 |        |
| 10156 | LTE-FDD (SC-FDMA, 50% RB, 5 MHz, QPSK)     | 5.79 | X | 5.66 | 65.8 | 19.1 | 116.4 | ±2.2 % |
|       |  |      | Y | 5.93 | 67.2 | 20.1 | 137.2 |        |
|       |  |      | Z | 5.58 | 65.9 | 19.1 | 122.9 |        |
| 10157 | LTE-FDD (SC-FDMA, 50% RB, 5 MHz, 16-QAM)   | 6.49 | X | 6.71 | 67.2 | 20.1 | 121.0 | ±2.7 % |
|       |  |      | Y | 6.83 | 67.6 | 20.4 | 143.2 |        |
|       |  |      | Z | 6.57 | 67.0 | 19.9 | 127.4 |        |
| 10160 | LTE-FDD (SC-FDMA, 50% RB, 15 MHz, QPSK)    | 5.81 | X | 6.31 | 66.8 | 19.5 | 123.4 | ±2.7 % |
|       |  |      | Y | 6.63 | 68.2 | 20.5 | 146.6 |        |
|       |  |      | Z | 6.23 | 66.7 | 19.4 | 130.7 |        |
| 10161 | LTE-FDD (SC-FDMA, 50% RB, 15 MHz, 16-QAM)  | 6.42 | X | 7.16 | 67.0 | 19.8 | 130.2 | ±2.7 % |
|       |  |      | Y | 7.16 | 67.4 | 20.2 | 108.6 |        |
|       |  |      | Z | 7.14 | 67.4 | 20.0 | 137.3 |        |
| 10163 | LTE-FDD (SC-FDMA, 50% RB, 3 MHz, QPSK)     | 5.68 | X | 5.47 | 65.7 | 19.0 | 115.2 | ±2.2 % |
|       |  |      | Y | 5.77 | 67.2 | 20.0 | 135.6 |        |
|       |  |      | Z | 5.40 | 65.7 | 18.9 | 121.5 |        |
| 10164 | LTE-FDD (SC-FDMA, 50% RB, 3 MHz, 16-QAM)   | 6.44 | X | 6.42 | 66.3 | 19.5 | 119.4 | ±2.5 % |
|       |  |      | Y | 6.73 | 67.9 | 20.5 | 140.6 |        |
|       |  |      | Z | 6.48 | 67.2 | 20.0 | 125.9 |        |

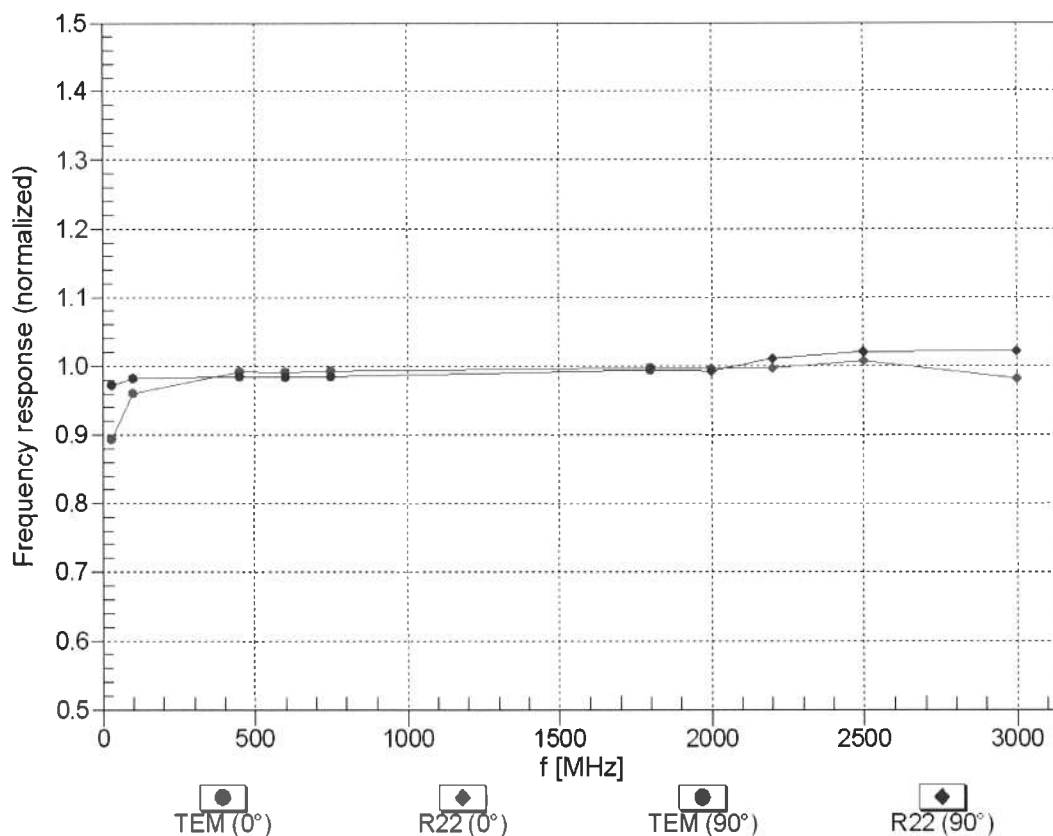
|       |   |      |   |       |      |      |       |        |
|-------|---|------|---|-------|------|------|-------|--------|
| 10166 | LTE-FDD (SC-FDMA, 50% RB, 1.4 MHz, QPSK)            | 5.45 | X | 4.84  | 65.1 | 18.6 | 109.7 | ±1.7 % |
|       |   |      | Y | 5.07  | 66.5 | 19.5 | 128.4 |        |
|       |   |      | Z | 4.86  | 65.6 | 18.8 | 116.5 |        |
| 10167 | LTE-FDD (SC-FDMA, 50% RB, 1.4 MHz, 16-QAM)          | 6.21 | X | 5.84  | 66.6 | 19.7 | 112.3 | ±2.7 % |
|       |   |      | Y | 6.11  | 68.1 | 20.7 | 131.3 |        |
|       |   |      | Z | 5.78  | 66.7 | 19.6 | 118.4 |        |
| 10042 | IS-54 / IS-136 FDD (TDMA/FDM, PI/4-DQPSK, Halfrate) | 7.78 | X | 5.22  | 71.1 | 15.9 | 141.1 | ±3.3 % |
|       |   |      | Y | 36.99 | 99.8 | 25.4 | 114.1 |        |
|       |   |      | Z | 8.36  | 76.2 | 18.3 | 118.5 |        |

The reported uncertainty of measurement is stated as the standard uncertainty of measurement multiplied by the coverage factor  $k=2$ , which for a normal distribution corresponds to a coverage probability of approximately 95%.

<sup>B</sup> Numerical linearization parameter: uncertainty not required.

<sup>E</sup> Uncertainty is determined using the max. deviation from linear response applying rectangular distribution and is expressed for the square of the field value.

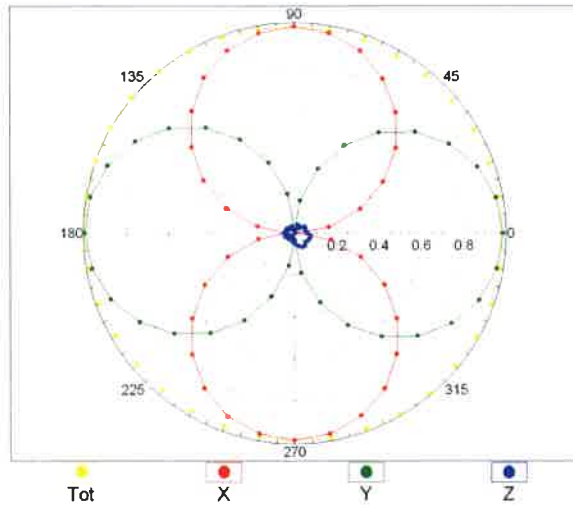
### Frequency Response of E-Field (TEM-Cell:ifi110 EXX, Waveguide: R22)



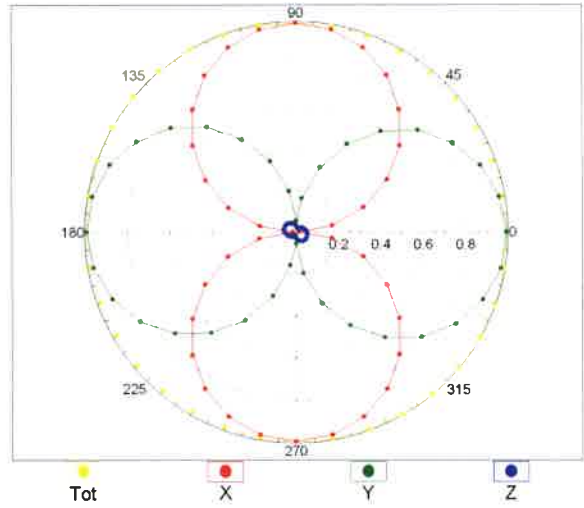
Uncertainty of Frequency Response of E-field:  $\pm 6.3\%$  (k=2)

### Receiving Pattern ( $\phi$ ), $\vartheta = 0^\circ$

f=600 MHz,TEM,0°

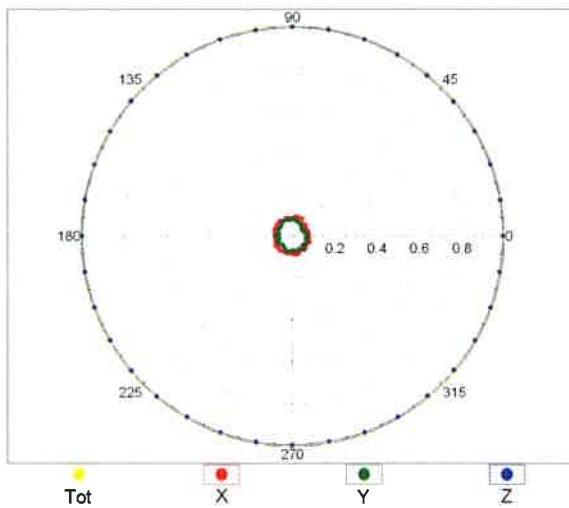


f=2500 MHz,R22,0°

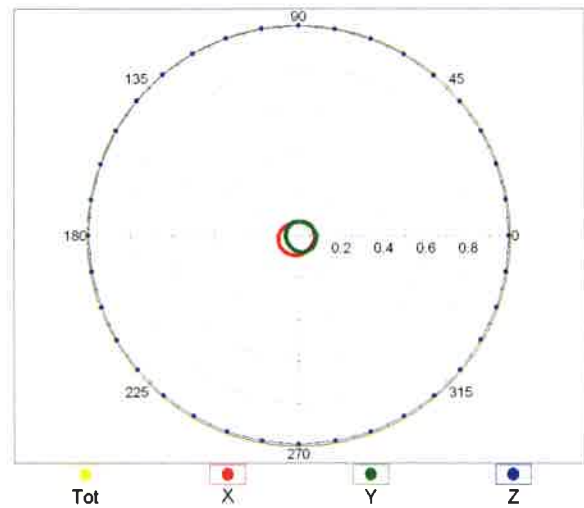


### Receiving Pattern ( $\phi$ ), $\vartheta = 90^\circ$

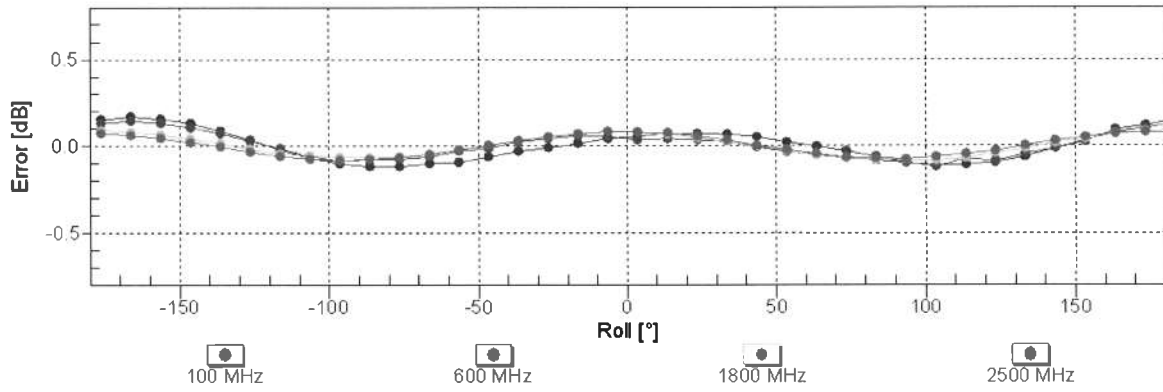
f=600 MHz,TEM,90°



f=2500 MHz,R22,90°

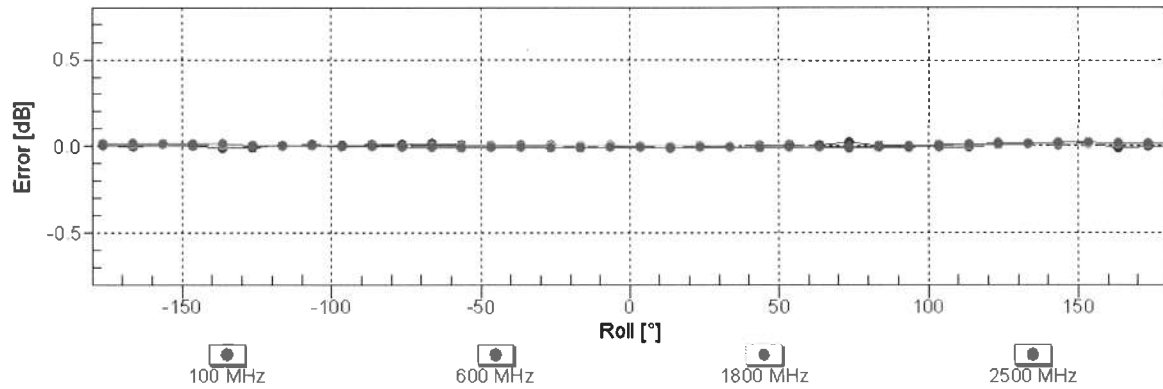


### Receiving Pattern ( $\phi$ ), $\vartheta = 0^\circ$



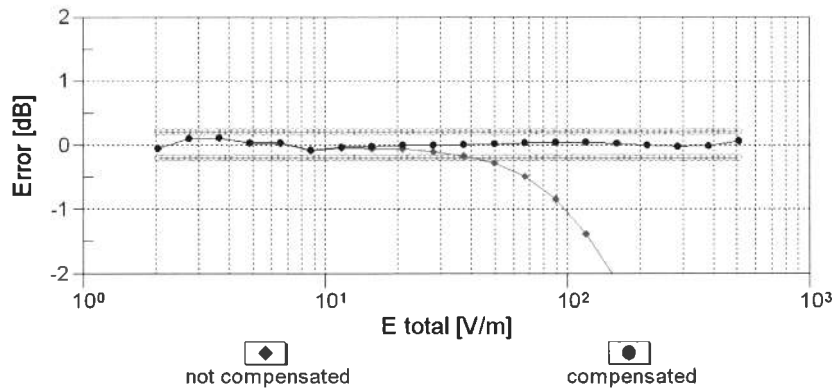
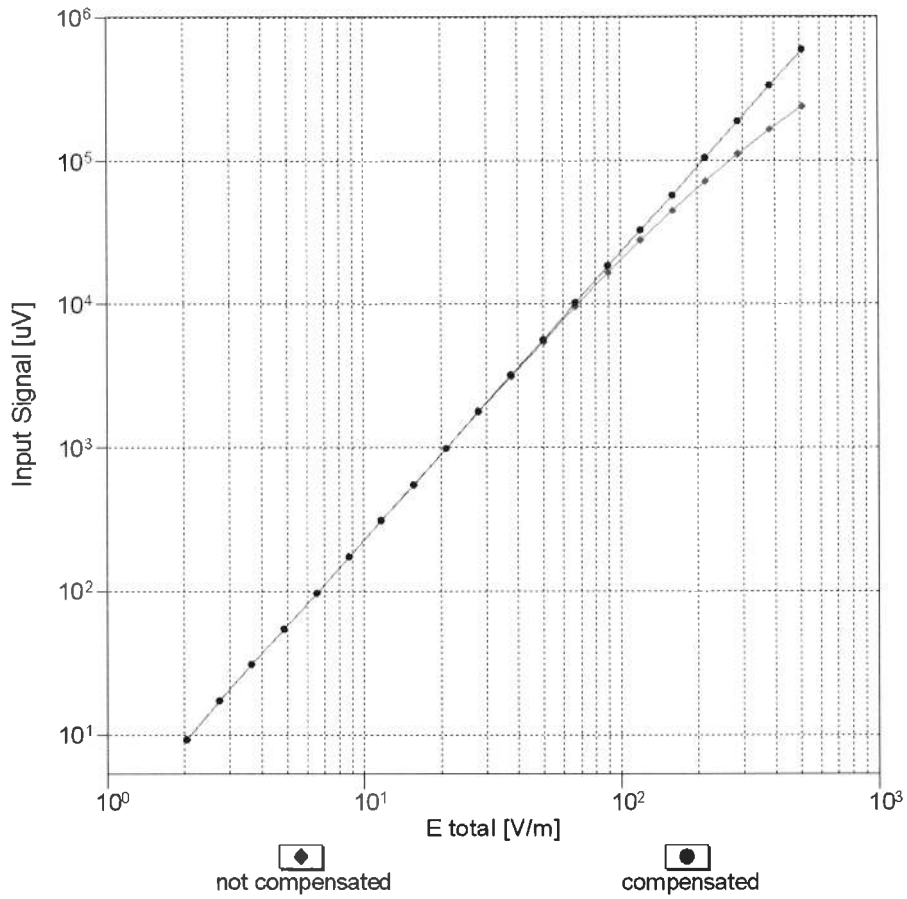
Uncertainty of Axial Isotropy Assessment:  $\pm 0.5\%$  ( $k=2$ )

### Receiving Pattern ( $\phi$ ), $\vartheta = 90^\circ$



Uncertainty of Axial Isotropy Assessment:  $\pm 0.5\%$  ( $k=2$ )

### Dynamic Range f(E-field) (TEM cell , f = 900 MHz)

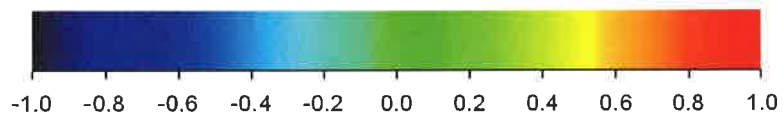
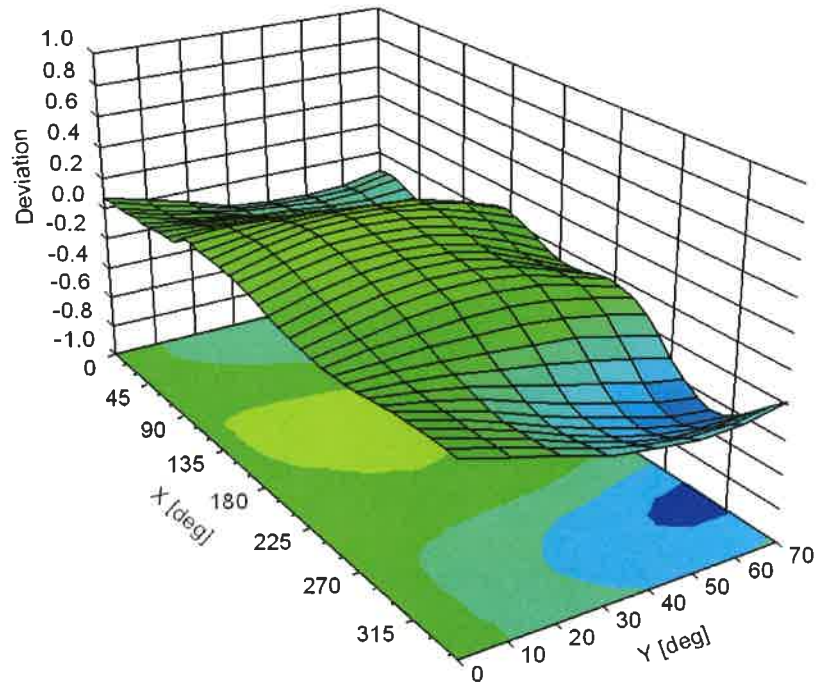


Uncertainty of Linearity Assessment:  $\pm 0.6\%$  (k=2)



# Deviation from Isotropy in Air

Error ( $\phi, \vartheta$ ),  $f = 900$  MHz



**Uncertainty of Spherical Isotropy Assessment:  $\pm 2.6\%$  ( $k=2$ )**

## DASY/EASY - Parameters of Probe: ER3DV6 - SN:2445

### Other Probe Parameters

|   |             |
|---|-------------|
| Sensor Arrangement                      | Rectangular |
| Connector Angle (°)                     | 43.6        |
| Mechanical Surface Detection Mode       | enabled     |
| Optical Surface Detection Mode          | disabled    |
| Probe Overall Length                    | 337 mm      |
| Probe Body Diameter                     | 10 mm       |
| Tip Length                              | 10 mm       |
| Tip Diameter                            | 8 mm        |
| Probe Tip to Sensor X Calibration Point | 2.5 mm      |
| Probe Tip to Sensor Y Calibration Point | 2.5 mm      |
| Probe Tip to Sensor Z Calibration Point | 2.5 mm      |