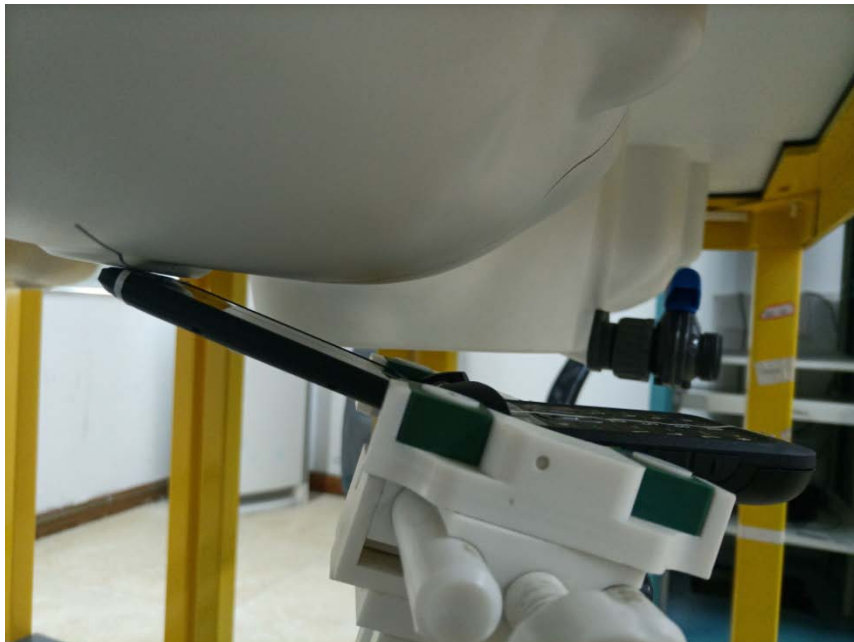


Annex B Test Setup Photos

Head



Right Cheek



Right Tilt



Left Cheek



Left Tilt

Body



Front Side for Open the Flip
(Test distance: 10mm)



Front Side
(Test distance: 10mm)



Back Side
(Test distance: 10mm)



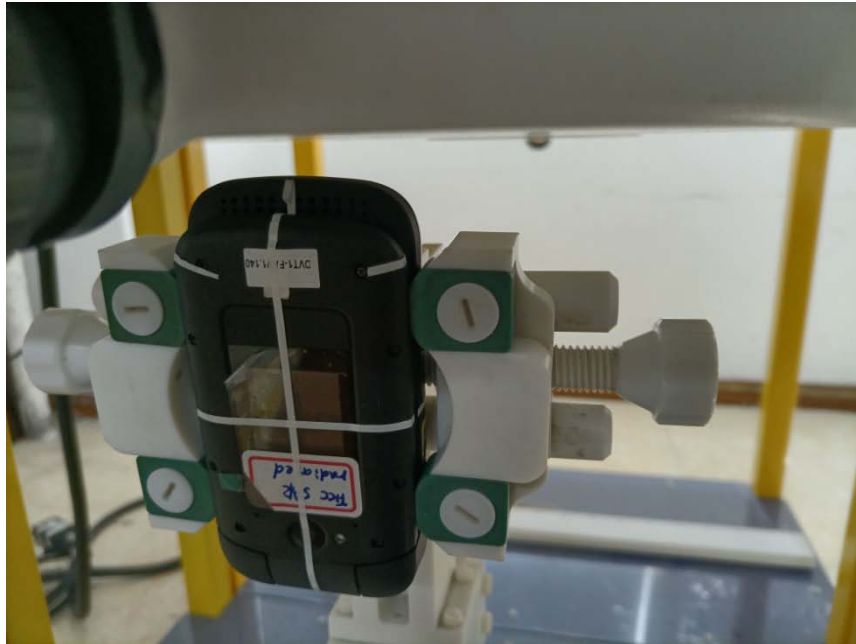
Left Side
(Test distance: 10mm)



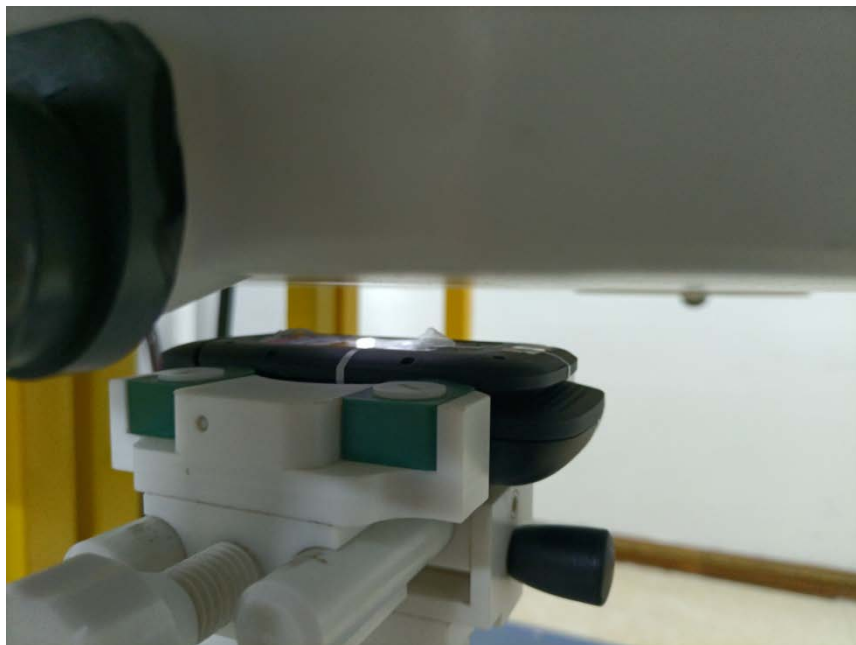
Right Side
(Test distance: 10mm)



Top Side
(Test distance: 10mm)



Bottom Side
(Test distance: 10mm)



Front Side
(Test distance: 15mm)



Back Side
(Test distance: 15mm)