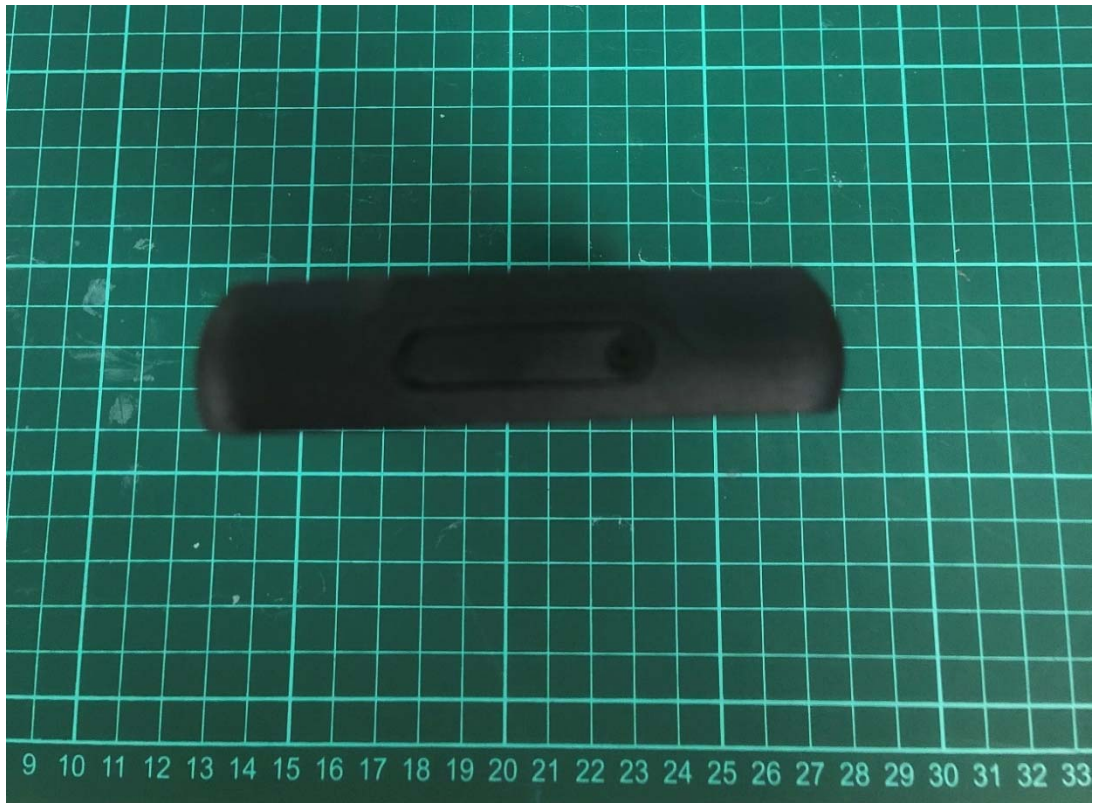


WYPP14010















**sonim** 11CP05981  
 Rechargeable Li-Ion Polymer Battery  
 Model: B01.0500401S  
 Rated Voltage: 3.7V  
 Rated Capacity: 1850mAh @ 18.75Wh  
 Typical Capacity: 5000mAh @ 19.35Wh  
 Limited Charge Voltage: 4.45V  
 For use with Sonim products only



S/N: TL6223321225P004003559

**CAUTION:**

- Use specified charger only.
- Do not dispose in fire.
- Do not expose to high temp. (60°C/140°F).
- Do not pierce.
- Do not short circuit.
- Dispose of properly.

See phone manual for more safety information!



Li-Ion

Made in China

11 12 13 14 15 16 17 18 19 20