

INSTRUCTIONS  
FOR USE



OVERVIEW

Thanks for buying this MU802 solar wireless speaker developed by Winchance Co.ltd.

With a unique design of helmet exterior and stainless-steel double-bars handle, MU802 allows you to share with friends with the graceful music, wherever at rooms, in the garden, or on the trip.

Solar energy or adapter is applicable to charging the speaker. It can be charged by solar energy during the daytime and be easily used at night. That is so practical and environment friendly.

Unique wireless audio transmission technology make separation of docking station from speaker, enable you to enjoy the music at any corner of the villa & garden. Especially, the portable docking station ("made for iPod"), has been identified by Apple Inc, can compatible with modern play mode.

Perfect styling design, compatible with iPod / iPhone, no need commutator , let the users to handle the speaker more freely and conveniently.

The device simultaneously provide with Aux audio input, can easily transfer the MP3/CD/laptop music into the speaker. Strongly recommend you take a moment to read the manual before using this humanistic product.

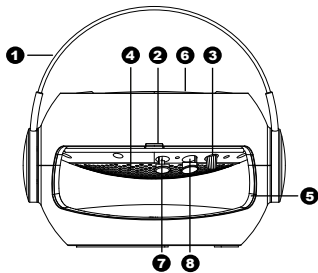
1、iPod/iPhone COMPATIBILITY

	nano 4G/8G/16G
	iPhone 8G/16G/32G
	touch 8G/16G/32G
	classic 160G

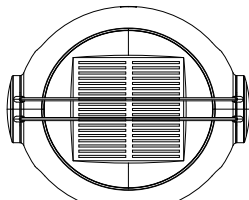
NOTE:  
The other iPod/iPhone models excluded above, could be connected through the Aux mode.

2、INSTALLATION

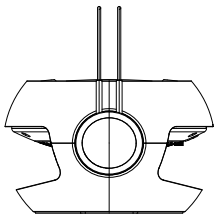
1、Solar Speaker



- 1 Handle
- 2 Indicator light (work status)
- 3 Switch
- 4 Horn grill
- 5 Back light
- 6 Solar panel
- 7 DC9V power port
- 8 Aux port



SOLAR PANEL



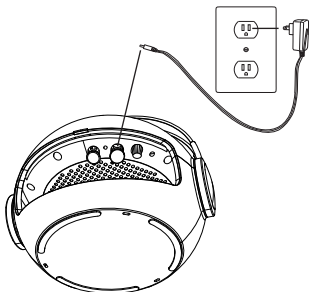
SIDE



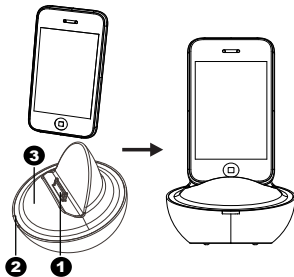
SPEAKER ADAPTOR



φ3.5mm AUXILIARY CABLE



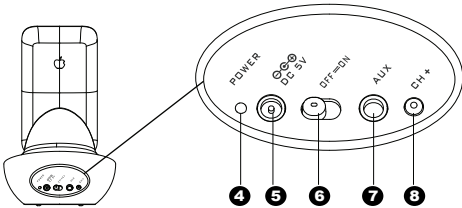
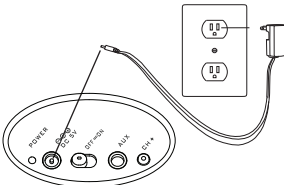
2、Docking station



φ3.5mm AUX CABLE

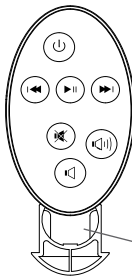
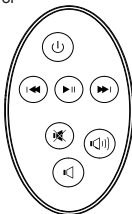


DOCKING STATION ADAPTOR



- 1 iPod/iPhonedocking pin
- 2 Multicolor status light
- 3 Remote sensor
- 4 Battery status indicator
- 5 DC 5Vpower port
- 6 power switch
- 7 Auxport
- 8 Channel switch button

3、Remote control

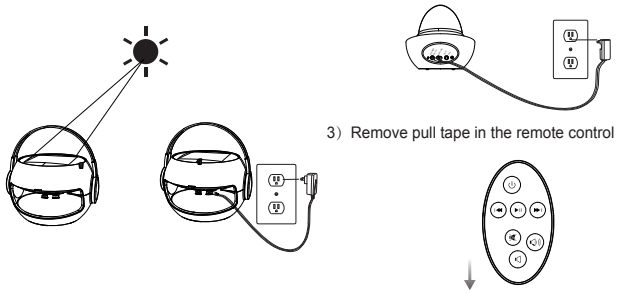


LITHIUM BATTERY  
CR 2032  
3V  
CHN

### 3. A TRIP TO MUSIC

Follow the steps below to enjoy the wonderful music:

- For first time use, pls charge it at first (the battery may consume during transportation)
- Charge the speaker by sunlight for 15h, or charge by adaptor for 3 hours
- Charge the docking station by adaptor for 3h;



#### 2. Normal use

- turn on the docking station and speaker:
- insert iPod to play(response time≤3sec)



- Without an iPod, insert Aux to play.

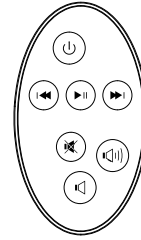
#### Proposal I



#### Proposal II



### 4. REMOTE CONTROL



BUTTON	ACTION	RESULT
	Press once	Turn the speaker ON or OFF
	Press once	iPod \ iPhone play \ pause press twice to unmute
	Press once	Skipto previous (iPod \ iPhone)
	Press once	Skipto next (iPod \ iPhone)
	Press once Long press	Volume up one level (32 levels in total) Volume continuous up, till maximum
	Press once Long press	Volume up one level (32 levels in total) Volume continuous down, till mute
	Press once	Mute ON/OFF (either Aux or iPod)

### 5. INDICATOR LIGHT INFO

DEVICE/LOCATION	INDICATOR STATUS	IMPLICATION
	Green/cayn/blue light flashing 4 times	initial status
	blue light	work under iPod mode
	blue light long glitter	standby (under iPod mode); there is a 10 minute cutoff with inactivity
	green light	working under Aux mode
	green light long glitter	standby (under Aux mode); there is a 10 minute cutoff with inactivity
	blue/green light glitter twice	get the remote control instruction
	blue/green long glitter	get the volume long-press instruction
	bule+green flashing simultaneously	① while the volume reach maximum or minimum: remote control capacity deficient ② glitter once every minute to indicate shortage of capacity, pls charge asap.
	red light long glitter	fast charge (needs 1.0 ~ 1.5h)
	green light	trickle charge (needs 2~3h)
	green light	battery capacity is full charged with DC insert; without DC, indicate the capacity is sufficient
	yellow light	battery capacity can last for about 2~6h
	red light	low barrery capacity, pls charge asap
	red light short glitter	battery capacity exhausted, auto cufoff after 5s, pls charge!

DEVICE/LOCATION	INDICATOR STATUS	IMPLICATIONS
	red、yellow、green flashing 4 times	initial status
	green light	① working state, suffic ient battery capacity, can last for 5~8h ② full charge capacity under DC charger
	yellow light	working stae midmiun battery capacity, can last for 1 ~ 4h; pls charge before bring out
	red light	battery capacity near exhausted, pls charge asap, alarm once one minute.
	red light long glitter (5S)	no power, auto cutoff, with warning sound
	red light long glitter	fast charge (needs 1.0 ~ 1.5h under adaptor)
	green light long glitter	battery half saturation (needs 2 ~ 3h under adaptor charge)
	green light long glitter	speaker standby, sufficient battery capacity, can last for 5~8h
	yellow green light long glitter	speaker standby, medium battery capacity, can last for 1~4h; charge before bring out
	red light long glitter	speaker in hibernation, battery capacity exhausted pls charge in time

## 6、MAINTENANCE

- \* Place the speaker under direct sunlight to absorb solar energy during the daytime.
- \* Cover the casing onto the AUX/DC plug to prevent from rusting while not in use.
- \* Clean the solar panel regularly to ensure that the solar panel is not blocked.
- \* It is required to use the AC adaptor provided with the device.

NOTE: Changes or modifications not expressly approved by the party responsible for compliance could void the user's authority to operate the equipment.

## 7、QUESTONS AND ANSWERS

TROUBLE	SOLUTIONS
No sound	<ul style="list-style-type: none"><li>① Make sure the switch is turned on</li><li>② Check the battery , if there is no response while power on, pls charge.The first charging may need about 3~4h</li><li>③ Check the docking station</li><li>④ Ensure the docking station is within 30m of the speaker</li></ul>
Docking station no action	<ul style="list-style-type: none"><li>① Check the switch on , or restart it 1sec later.</li><li>② Check the power of docking station. Use the adaptor to charge it.needs 3~4h)</li><li>③ iPod mode , make sure under correct connection and on playing</li><li>④ Aux mode , make sure under correct connection, normal audio input signal (Pls remove iPod if you want to use Aux mode)</li></ul>
Interference	<ul style="list-style-type: none"><li>① Pls place docking station more than 70cm from the ground</li><li>② Shorten the distance between docking station and speaker, avoid walls/metal plates isolated</li><li>③ Press the channel button to switch channel</li></ul>

## 8、CAUTION

NOTE: This equipment has been tested and found to comply with the limits for a Class B digital device, pursuant to Part 15 of the FCC Rules. These limits are designed to provide reasonable protection against harmful interference in a residential installation. This equipment generates, uses and can radiate radio frequency energy and, if not installed and used in accordance with the instructions, may cause harmful interference to radio communications. However, there is no guarantee that interference will not occur in a

particular installation.

If this equipment does cause harmful interference to radio or television reception, which can be determined by turning the equipment off and on, the user is encouraged to try to correct the interference by one or more of the following measures:

- Reorient or relocate the receiving antenna.
- Increase the separation between the equipment and receiver.
- Connect the equipment into an outlet on a circuit different from that to which the receiver is connected.
- Consult the dealer or an experienced radio/TV technician for help.

## 9. COMPANY INFOMATION

Winchance solar (Fujian) Technology Co., Ltd.

ADD:JiangNan New High-Tech Electronic Information Industrial Park,Quanzhou,China

TEL: +86 (0) 595 22640888

FAX: +86 (0) 595 22640666

WEB: <http://www.winchance.cn>