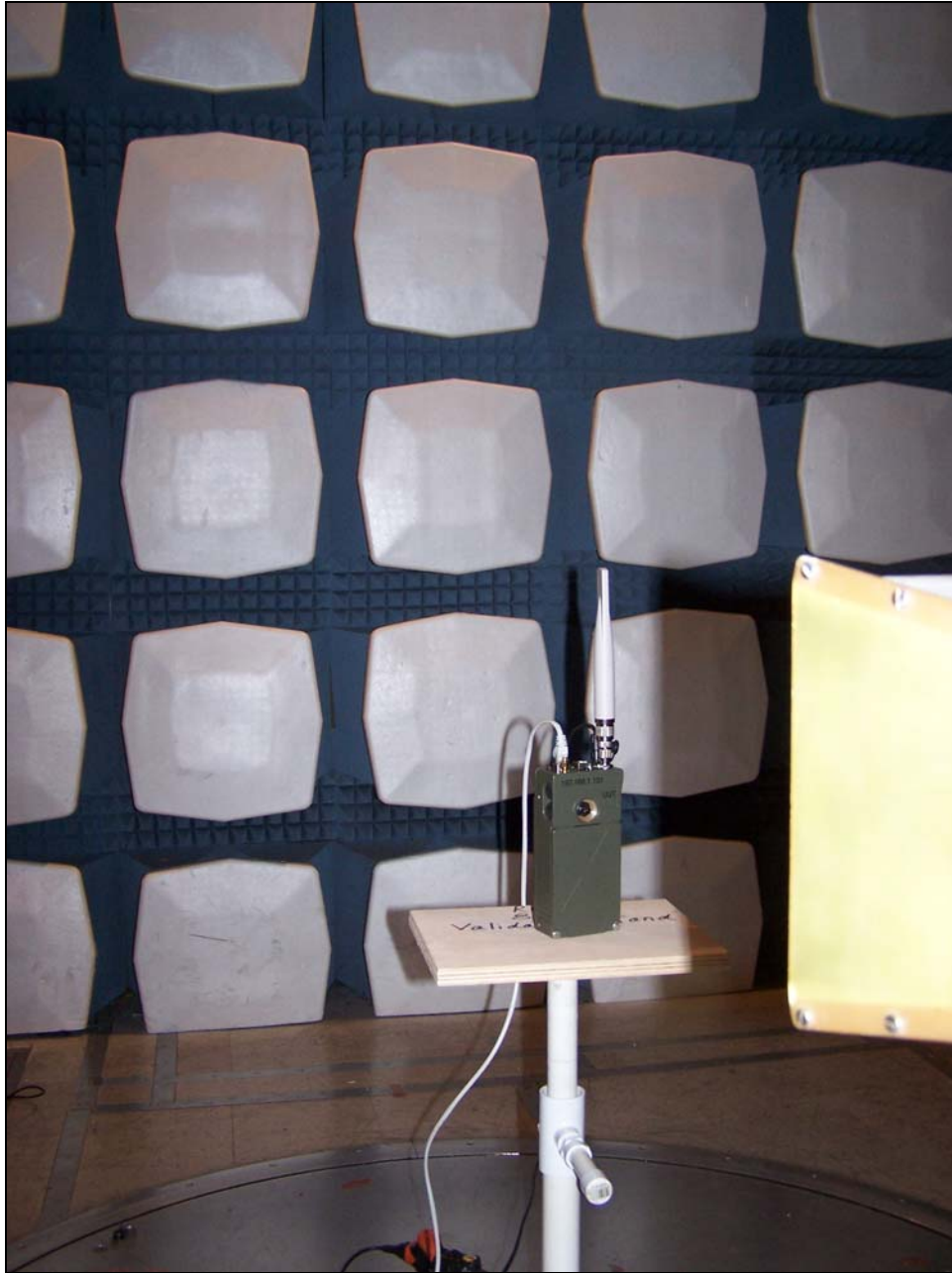


## Conducted Emission Limits Test Setup



**Photograph 2. Conducted Emissions, Test Setup**

## Radiated Spurious Test Setup Photograph



Photograph 3. Radiated Spurious, Test Setup

## Frequency Stability Test Photograph



**Photograph 4. Frequency Stability, Test Setup**

## C. Radar Waveform Calibration

The following equipment setup was used to calibrate the radiated Radar Waveform. A spectrum analyzer was used to establish the test signal level for each radar type. During this process there were no transmissions by either the Master or Client Device. The spectrum analyzer was switched to the zero span (Time Domain) mode at the frequency of the Radar Waveform generator. Peak detection was utilized. The spectrum analyzer's resolution bandwidth (RBW) was set to 3 MHz and the video bandwidth (VBW) was set to 3 MHz. The calibration setup is diagrammed in Figure 7, and the radar test signal generator is shown in Photograph 5.

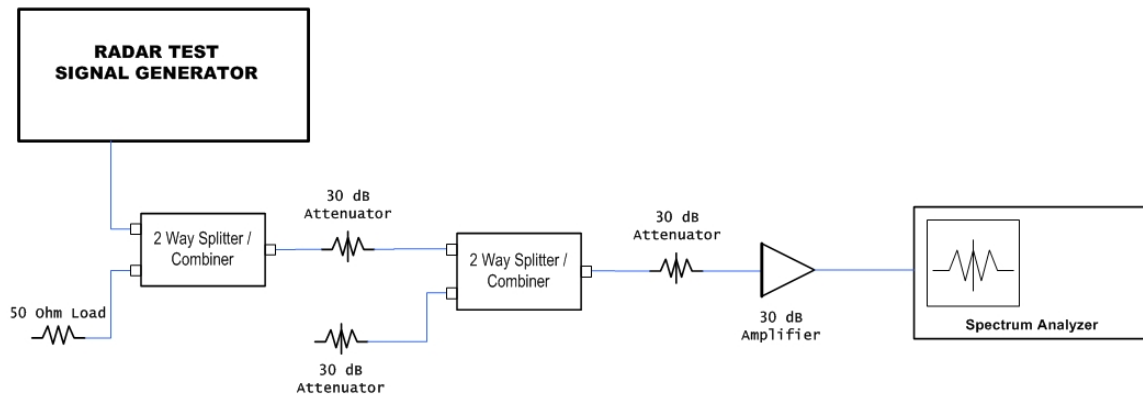
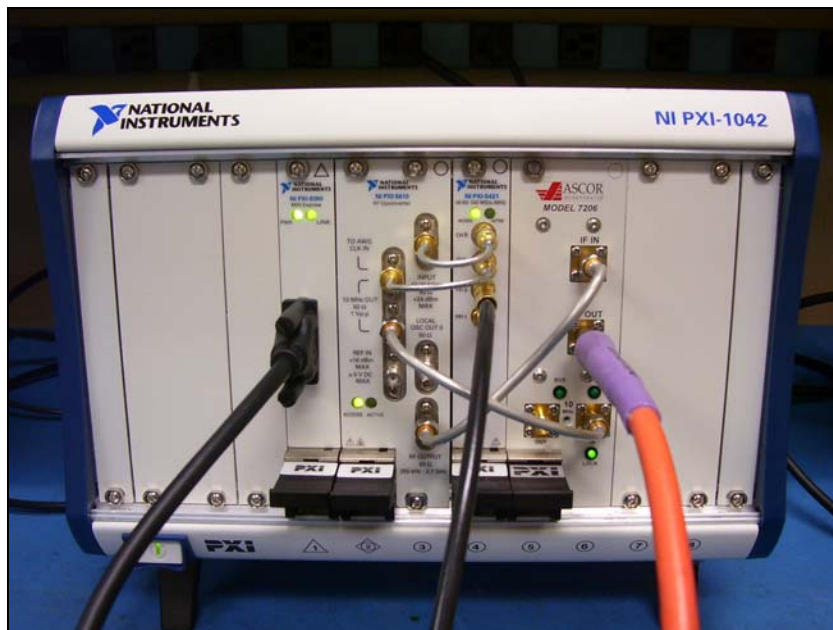
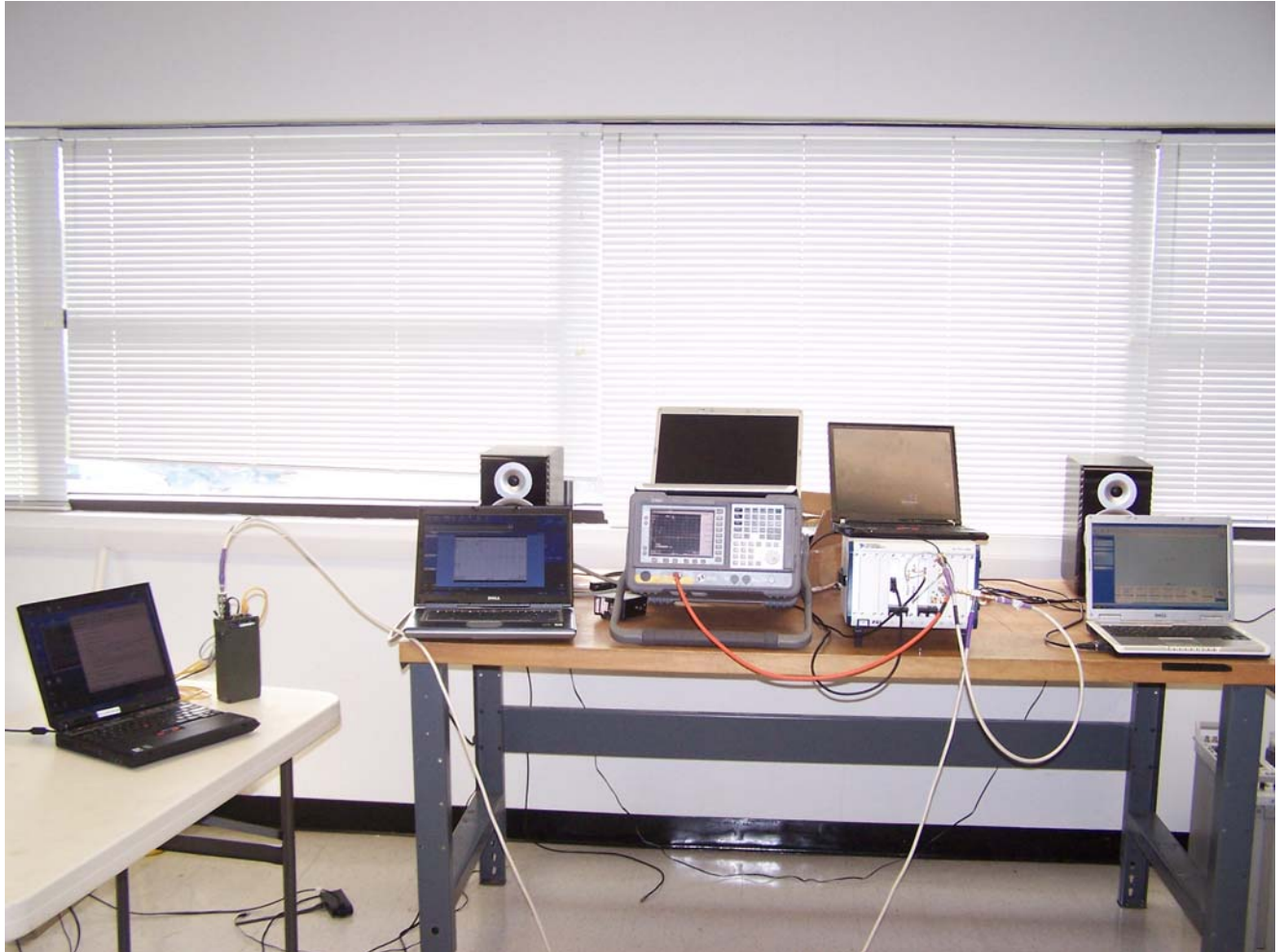


Figure 7. Calibration Test setup



Photograph 5. DFS Radar Test Signal Generator





**Photograph 6. Test Setup Photo**