



Dual Control Lever (Di2)

Hydraulic Disc Brake Type



The user's manual can be seen at the following link:
<https://si.shimano.com>

IMPORTANT NOTICE

- Contact the place of purchase or a distributor for information on installation, adjustment, and replacement of the products which are not found in the user's manual. A dealer's manual for professional and experienced bicycle mechanics is available on our website (<https://si.shimano.com>).
- Please observe the appropriate rules and regulations of the country, state or region in which you conduct your business as a dealer.

For safety, be sure to read this "user's manual" thoroughly before use, follow it for correct use, and store it so that it can be referenced at any time.

DANGER	Failure to follow the instructions will result in death or serious injury.
WARNING	Failure to follow the instructions could result in death or serious injury.
CAUTION	Failure to follow the instructions could cause personal injury or physical damage to equipment and surroundings.

Important safety information

WARNING

- Because each bicycle may handle slightly differently depending on the model, be sure to learn the proper braking technique (including brake lever pressure and bicycle control characteristics) and operation of your bicycle. Improper use of your bicycle's brake system may result in a loss of control or a fall, which could lead to severe injury.
- Do not disassemble or modify the product. This may cause the product to not operate correctly, and you may suddenly fall and be seriously injured.
- Do not throw or subject this product to strong shocks. If this is not observed, bursting, overheating or problems with operation may occur.
- Do not let grease adhere to the metal terminals. A conduction failure may result.
- Use only the coin batteries specified. Using an incorrect coin battery may cause the battery to burst or leak fluid, resulting in fire, injury, or defacement in the surrounding area.
- Keep the coin batteries out of the reach of children. If batteries are swallowed by mistake, seek medical attention immediately.
- Dispose of the coin batteries according to proper country and/or state disposal regulations. Disposal of this product into fire or a hot oven, or mechanically crushing or cutting it, can result in an explosion of the coin batteries.
- Do not use the coin batteries outside their operating temperature ranges. If the battery is used or stored in temperatures which are outside these ranges, fire, injury or problems with operation may occur.

- Do not use the coin batteries if leakages, discoloration, deformation or any other abnormalities occur. If this is not observed, bursting, overheating or problems with operation may occur.

- If any leaked fluid from the coin batteries gets on your skin or clothes, wash it off immediately with clean water. The leaked fluid may damage your skin.

- Do not leave this product in an extremely high temperature environment such as in a closed vehicle on a hot day, or near a heater. Doing so may result in an explosion of the coin batteries or the leakage of flammable liquid or gas from them.

- Do not subject this product to extremely low air pressure. Doing so may result in an explosion of the coin batteries or the leakage of flammable liquid or gas from them. Transporting this battery by air is not a problem.

- When operating the shift switch, be careful not to allow your fingers to be caught in the derailleur. The powerful motor which drives the electronic gear shifting derailleur will operate without stopping until the shifting position is reached.

- This hydraulic brake system has different braking characteristics from those of the rim brake type, demonstrating relatively high braking force at the beginning of braking (higher than the rim brake type); familiarize yourself sufficiently with the braking characteristics before using it. If you ride the bicycle without becoming sufficiently familiar with the braking characteristics, braking may cause you to fall off the bicycle, potentially causing serious injury or a fatal accident.

- The braking force for a hydraulic brake system will increase along with the size of the disc brake rotor (140 mm, 160 mm, 180 mm, 203 mm).
 - Do not use a 203 mm disc brake rotor. This will excessively increase the braking force, which could cause you to lose control of the bicycle, fall, and be seriously injured.
 - Only use a 180 mm disc brake rotor if you are unable to obtain sufficient braking force with a 160 mm disc brake rotor upon a trial ride, such as when riding an electronic assist road bicycle or if the rider is heavy. Otherwise, you may lose control of the bicycle, fall, and be seriously injured.
 - If you feel that the braking force is too high or too low, stop use and consult a place of purchase or a distributor. Accidents or falls may occur due to losing control of the bicycle, possibly resulting in serious injury.

- Please use extra caution to keep your fingers away from the rotating disc brake rotor. The disc brake rotor is sharp enough to inflict severe injury to your fingers if caught within the openings of moving rotor.



- Do not touch the calipers or disc brake rotor while riding or immediately after dismounting from the bicycle. The calipers and disc brake rotor will become hot when the brakes are operated, so you may get burned if you touch them.

- Do not allow any oil or grease to get onto the disc brake rotor and brake pads. Riding the bicycle with oil or grease on the brake shoes may prevent the brakes from operating and result in serious injury due to a fall or collision.

- Check the thickness of the brake pads and do not use them if they have a thickness of 0.5 mm or less. Doing otherwise may prevent the brakes from operating and result in serious injury.



- Do not use the disc brake rotor if it is cracked or deformed. The disc brake rotor may break, and result in serious injury due to a fall.

- Do not use the disc brake rotor if its thickness is 1.5 mm or less. Also do not use it if the aluminum surface becomes visible. The disc brake rotor may break, and result in serious injury due to a fall.

- Do not continuously apply the brakes. Doing so may cause a sudden increase in the brake lever stroke, preventing the brakes from operating and resulting in serious injury.

- Do not use the brakes with fluid leaking. Doing otherwise may prevent the brakes from operating and result in serious injury.

- Do not apply the front brake too strongly. If you do so, the front wheel may lock and the bicycle may fall forward, and serious injury may result.

- Because the required braking distance will be longer during wet weather, reduce your speed and apply the brakes early and gently. You may fall or collide and be seriously injured.

- A wet road surface may cause tires to lose traction; therefore, to avoid this, reduce your speed and apply the brakes early and gently. If the tires lose traction, you may fall and be seriously injured.

CAUTION

■ Cautions on SHIMANO genuine mineral oil

- In the event of eye contact, flush with fresh water and seek medical assistance immediately. Contact with eyes may result in irritation.
- In the event of skin contact, wash well with soapy water. Contact with skin may cause a rash and discomfort.
- Cover nose and mouth with a respirator type mask and use in a well ventilated area. Inhalation of mineral oil mist or vapors may cause nausea.
- If mineral oil mist or vapor is inhaled, go immediately to an area with fresh air. Cover up with a blanket. Stay warm and stable and seek professional medical advice.

■ Bed-in period

- Disc brakes have a bed-in period, and the braking force will gradually increase as the bed-in period progresses. Accidents or falls may occur due to losing control of the bicycle, possibly resulting in serious injury. The same thing will happen when the brake pads or disc brake rotor are replaced.

Notice

- To prevent noise and ensure the best performance, perform the bed-in procedure after replacing the brake pads or disc brake rotor.
- Be sure to rotate the crank while performing the switch operations related to gear shifting.
- The components are designed to be fully waterproofed to withstand wet weather riding conditions; however, do not deliberately place them into water.
- Do not clean the bicycle with a high-pressure washer. If water gets into any of the components, operating problems or rusting may result.
- Handle the components carefully, and avoid subjecting them to strong shock.
- Be careful not to get water into the E-TUBE port.
- Do not use the thinners or harsh solvents to clean the products. Such solvents may damage the surface.
- In the case of carbon levers, wash them with a soft cloth using a neutral detergent. Otherwise, the material may be damaged and lose strength.
- Avoid leaving the carbon levers in places where high temperatures are present. Also keep them well away from fire.
- When the bicycle wheel has been removed, it is recommended that pad spacers are installed. Do not depress the brake lever while the wheel is removed. If the brake lever is depressed without the pad spacers installed, the pistons will protrude further than normal. If that happens, consult a place of purchase.
- Use soapy water and a dry cloth when cleaning and carrying out maintenance of the brake system. Do not use commercially available

brake cleaners or silencing agents. Such substances can cause damage to parts such as seals.

- Contact the place of purchase for updates of the component software. The most up-to-date information is available on the SHIMANO website.
- Also read the manuals for other connected components together with the manual for the brakes.

- Be sure to attach dummy plugs to any unused E-TUBE ports. If water gets into any of the components, operating problems or rusting may result.

- The electric wire has small waterproof connectors, so do not repeatedly connect and disconnect it too often. Doing so may impair the waterproofing.

- 2.4 GHz digital wireless

This product adopts digital communication technologies in the 2.4 GHz frequency, which is used for wireless LAN, etc. It may receive interference in the following locations or environments that prevents wireless communication from being performed correctly:

- Near a device such as a television, computer, radio, motor, or microwave oven, or inside an automobile or railway car
- Near a railway crossing or railway track, television transmitting station, or radar base, etc.
- When using the product in combination with another cordless device or some lights

- Coin batteries

- Insert the coin batteries with the correct +/- orientation.
- Remove the coin batteries if you do not use them for a long period.
- When the coin batteries are depleted, remove them immediately.

- Store this product or the bicycle with this product installed in a cool indoor location away from direct sunlight and rain (approx. 10 - 20°C). If the storage temperature is too low or too high, the performance of the coin batteries is reduced, and their usable time will be shorter. When using after a long period of non-use, be sure to replace the coin batteries with new ones.

- Products are not guaranteed against natural wear and deterioration from normal use and aging.

- For maximum performance we highly recommend SHIMANO lubricants and maintenance products.

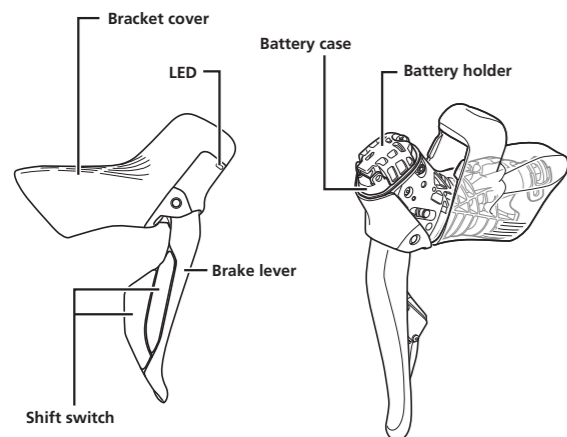
This device complies with part 15 of the FCC Rules. Operation is subject to the following two conditions:
(1) This device may not cause harmful interference, and (2) this device must accept any interference received, including interference that may cause undesired operation.

Regular inspections before riding the bicycle

Before riding the bicycle, check the following items. If any problems are found, consult your place of purchase or a distributor.

- Are there any signs of brake oil leakage?
- Do the front and rear brakes work correctly?
- Do the pads have a thickness of 0.5 mm or more?
- Is the disc brake rotor cracked or deformed?
- Does gear shifting occur when the shift switches are operated?
- Are the levers securely installed to the handlebar?
- Do any abnormal noises occur during operation?
- Is there sufficient charge remaining in the coin batteries?

Names of parts



* The E-TUBE port is not used. Be sure to attach a dummy plug to it.

How to operate

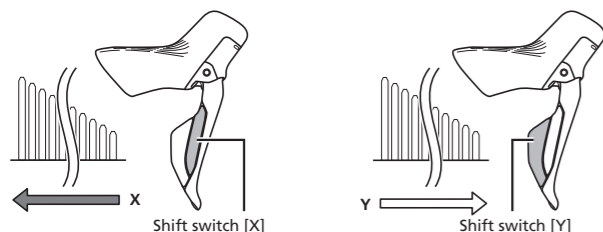
Gear shifting operations

Be sure to rotate the crank while performing all switch operations related to gear shifting.

Rear shift switch operation (default setting)

<Shift switch [X]>
Shifts to a larger sprocket.

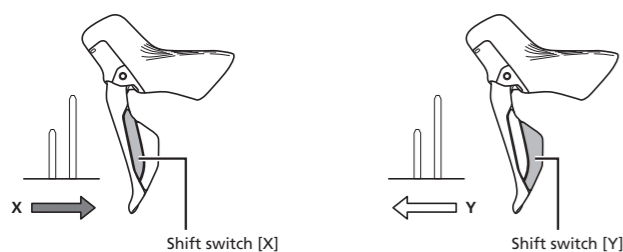
<Shift switch [Y]>
Shifts to a smaller sprocket.



Front shift switch operation (default setting)

<Shift switch [X]>
Shifts to a larger chainring.

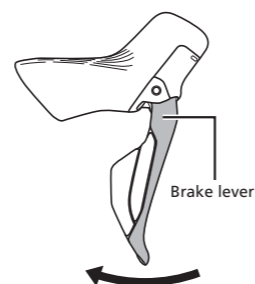
<Shift switch [Y]>
Shifts to a smaller chainring.



- If the chain falls off the crank to the inside, press and hold the shift switch [X] for 1 second or more. This will cause the front derailleur to move to the outermost position and remain there for 10 seconds in order to remount the chain.
- Actual behavior may differ depending on the connected components and software version.
- The settings for each switch can be changed as follows. For details about changing settings, contact the place of purchase.
 - Reverse the shifting up and shifting down functions for shift switches [X] and [Y]
 - Reverse the rear and front shift switches
 - Multi shift mode setting
- If no switch operations are performed for 30 minutes, gear shifting will not be performed with the first switch operation after that. Gear shifting will be performed from the second switch operation.

Operating the brakes

This product has reach adjustment and free stroke adjustment functions. For details about making these adjustments, contact the place of purchase.



■ Selecting / confirming the shift mode

Double click the shift switch assigned to the mode switch function to switch the shift mode selection. The LED on the rear derailleur changes as indicated in the figure each time the shift mode switches.

Manual shift		
●	Manual shift (M)	Blue
Synchronized shift 1		
☀	Shift mode 1 (S1)	Flashing blue (twice)
Synchronized shift 2		
☀	Shift mode 2 (S2)	Flashing blue (3 times)

■ Switching to the adjustment mode

Press and hold the shift switch assigned to the mode switch function for 2 to 5 seconds to switch the mode.

For the setting procedure, contact your place of purchase or a distributor.

■ Checking the coin battery level with a shift switch operation

If you hold down two shift switches simultaneously for 0.5 seconds or longer, the LED changes to any of the status shown in the figure depending on the coin battery level.

11% - 100%	■	Yellow-green
1% - 10%	■	Red
0%	□	Off

Coin battery replacement

■ Before replacing the coin batteries

- The coin batteries supplied with the dual control levers may be low, as they are intended only for test purposes. When the coin battery level becomes low, replace the coin batteries with new ones.
- When replacing the coin batteries or opening/closing the battery holder, move to an area well away from sources of water (such as rivers, lakes, the ocean, or ditches).
- Do not perform this task in locations with a lot of water or mud, such as outdoors during rain or car washing facilities. If this is not observed, problems with operation may occur.
- Do not perform this task in areas with a lot of sand or dust in the air. If this is not observed, problems with operation may occur.
- Before replacing the coin batteries, wipe the battery holder and battery case to remove water, dirt, etc. If this is not observed, problems with operation may occur.

- Use your hands or an insulated tool with a blunt tip to replace the coin batteries.
- Take care of the terminals when removing the coin batteries in order to prevent damage to the coin batteries.
- When performing this task with your hands, clean your hands and remove all water and dirt before performing this task.
- Static electricity can damage electronic components. Discharge static electricity from your body before performing this task.
- Use two CR1632 coin batteries for each of the left and right dual control levers.
- It is recommended that you use new coin batteries.

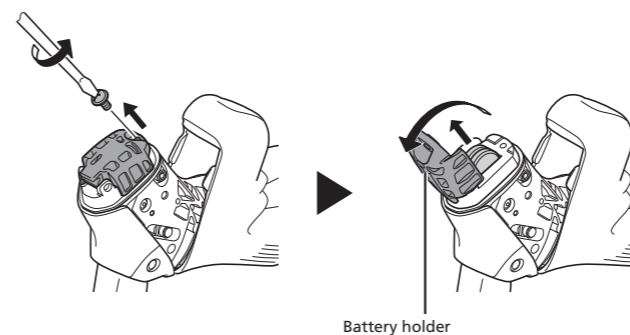
■ Replacing the coin batteries

1. Turn over the bracket cover from the front side.



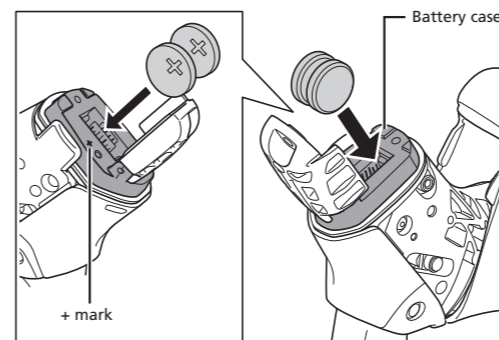
2. Open the battery holder using a screwdriver, and remove the two old coin batteries.

If it is difficult to remove a coin battery, attach tape, etc. to the surface of the coin battery and pull it out.

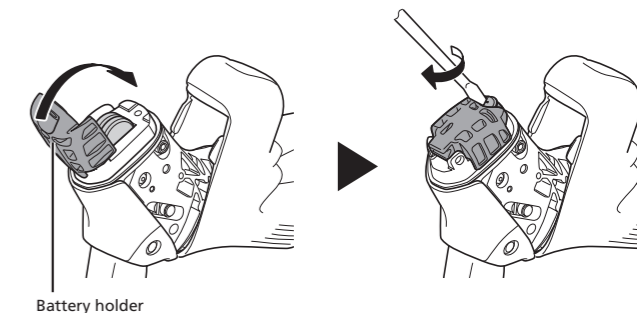


3. Set the new coin batteries to the battery case.

As shown in the figure, set the two coin batteries with the positive (+) side on the side of the + mark.



4. Close the battery holder, and firmly secure it with a screwdriver. Be careful not to overtighten the screw, as it may cause damage.



- Before closing the battery holder, check that the waterproof sealing gasket and contacting surfaces are free of foreign substances (such as dirt, dust, sand, hair, thread, or liquids).
- If there are foreign substances present, wipe them away with a clean, dry cloth that does not shed lint or fibers.
- Open the battery holder only when replacing the coin batteries, and do not leave it open. Doing so may cause problems with operation due to foreign objects getting inside or deterioration to the electronic component, etc.
- Make sure the coin batteries are installed correctly. Installing a coin battery with the positive (+) and negative (-) polarities reversed will not only stop the component from operating, it may also cause the component to malfunction.
- After replacement, check that it works normally.

Method for pairing with the rear derailleur

Refer to the user's manual for E-TUBE PROJECT or contact the place of purchase for information about pairing.

How to perform bed-in

To optimize the performance of the brake pads and disc brake rotor, perform the bed-in procedure as explained in the steps below:

1. Ride your bicycle in a flat and safe area without obstacles and accelerate to a moderate speed.
2. Operate the brake lever until you slow down to walking speed. Do this only with one brake lever at a time. Be careful when performing this procedure. Always operate your brake lever with moderation, especially when you bed in the front brake.
3. Repeat steps 1 and 2 for at least 20 times for both the front and rear brakes. While repeating the process, the brake force will increase.

Specifications

Frequency band	2.4 GHz
Maximum radio-frequency power	<10 dBm
Firmware version	4.0.0 or later

SHIMANO



SHIMANO NORTH AMERICA BICYCLE, INC.
One Holland, Irvine, California 92618, U.S.A. Phone: +1-949-951-5003

SHIMANO EUROPE B.V.
High Tech Campus 92, 5656 AG Eindhoven, The Netherlands Phone: +31-402-612222

MADISON (A DIVISION OF H.YOUNG (OPERATIONS) LTD)
Roebuck Way, Knowlhill, Milton Keynes, Buckinghamshire, MK5 8HL, United Kingdom

SHIMANO INC.
3-77 Oimatsu-cho, Sakai-ku, Sakai City, Osaka 590-8577, Japan