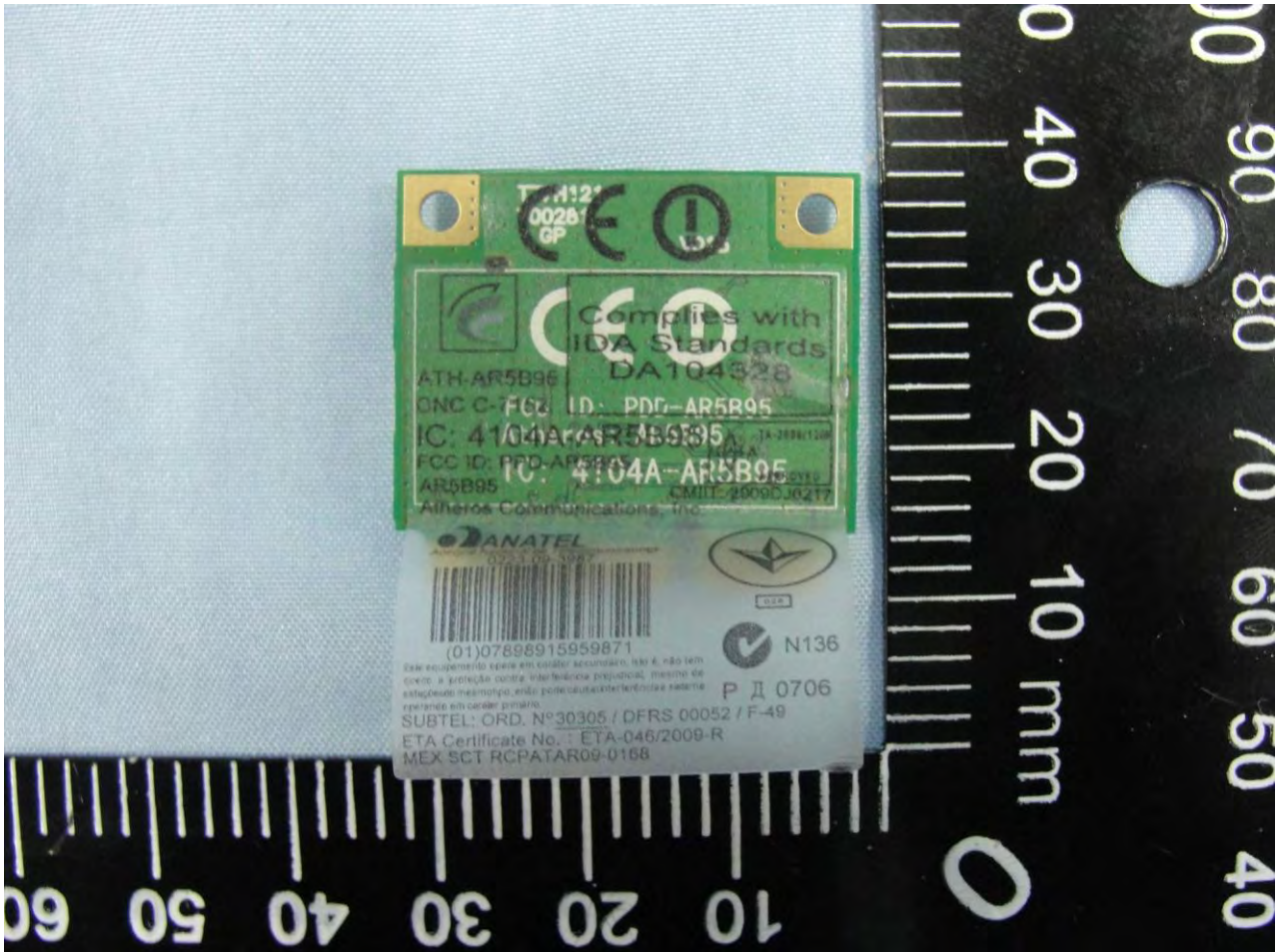
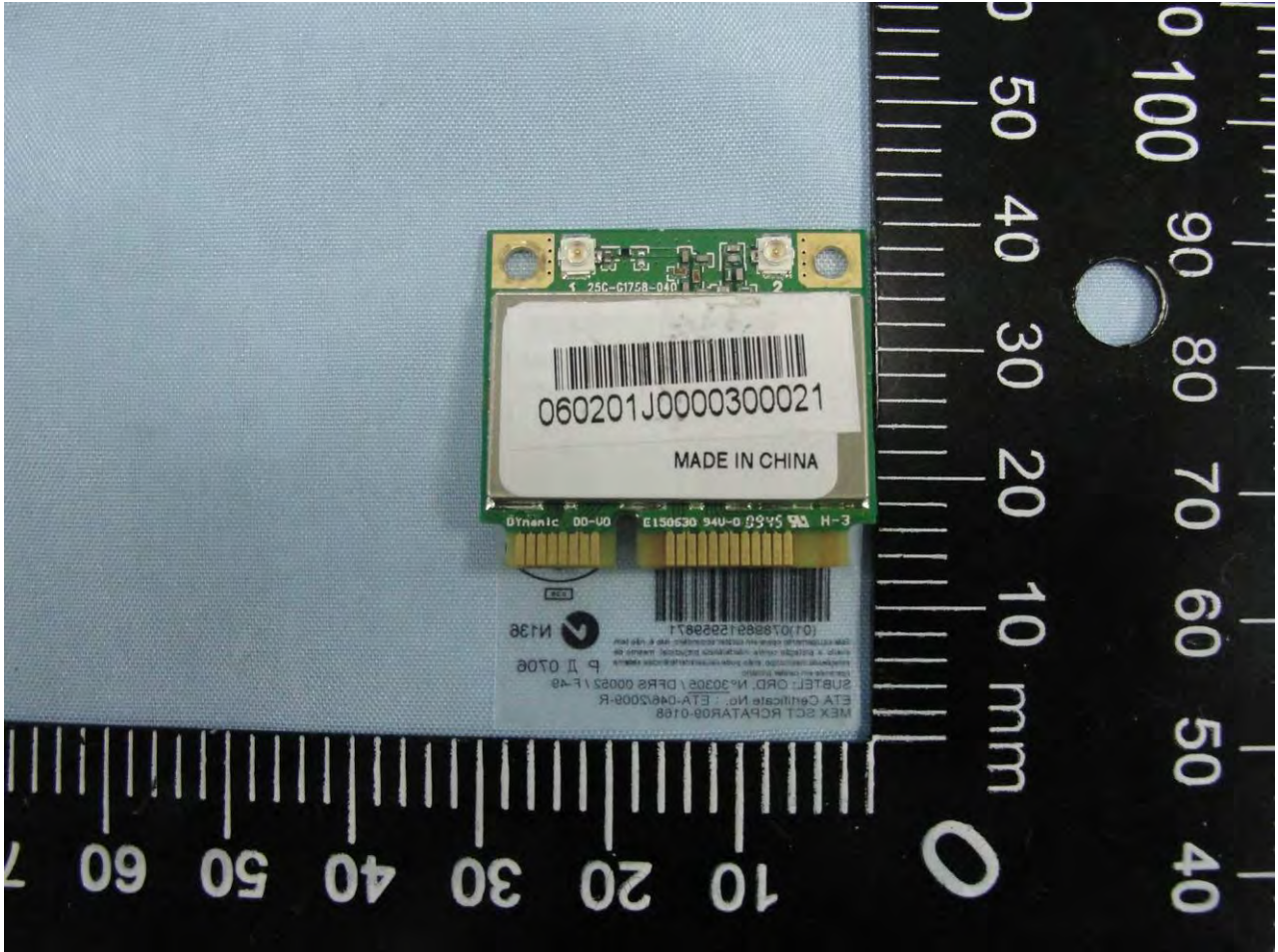


1. External Photograph of EUT

EUT: WLAN module (AR5B95)



EUT: WLAN module (AR5B95)



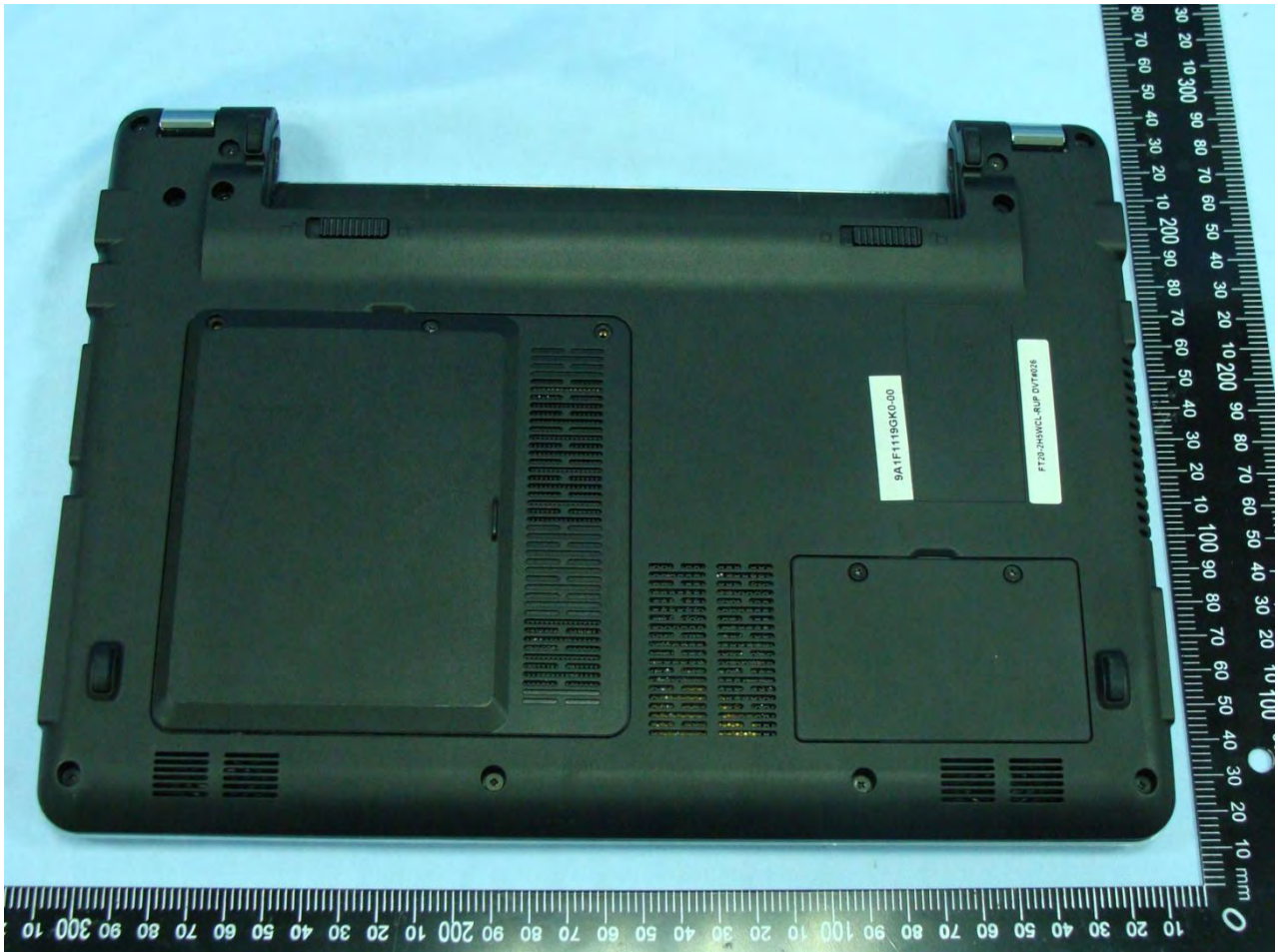
Host: Notebook Computer

(FT2*** (“**” can be 0-9, a-z, A-Z or Blank); FT3*** (“**” can be 0-9, a-z, A-Z or Blank); HSG1121)



Host: Notebook Computer

(FT2*** (“**”) can be 0-9, a-z, A-Z or Blank); FT3*** (“**”) can be 0-9, a-z, A-Z or Blank); HSG1121)





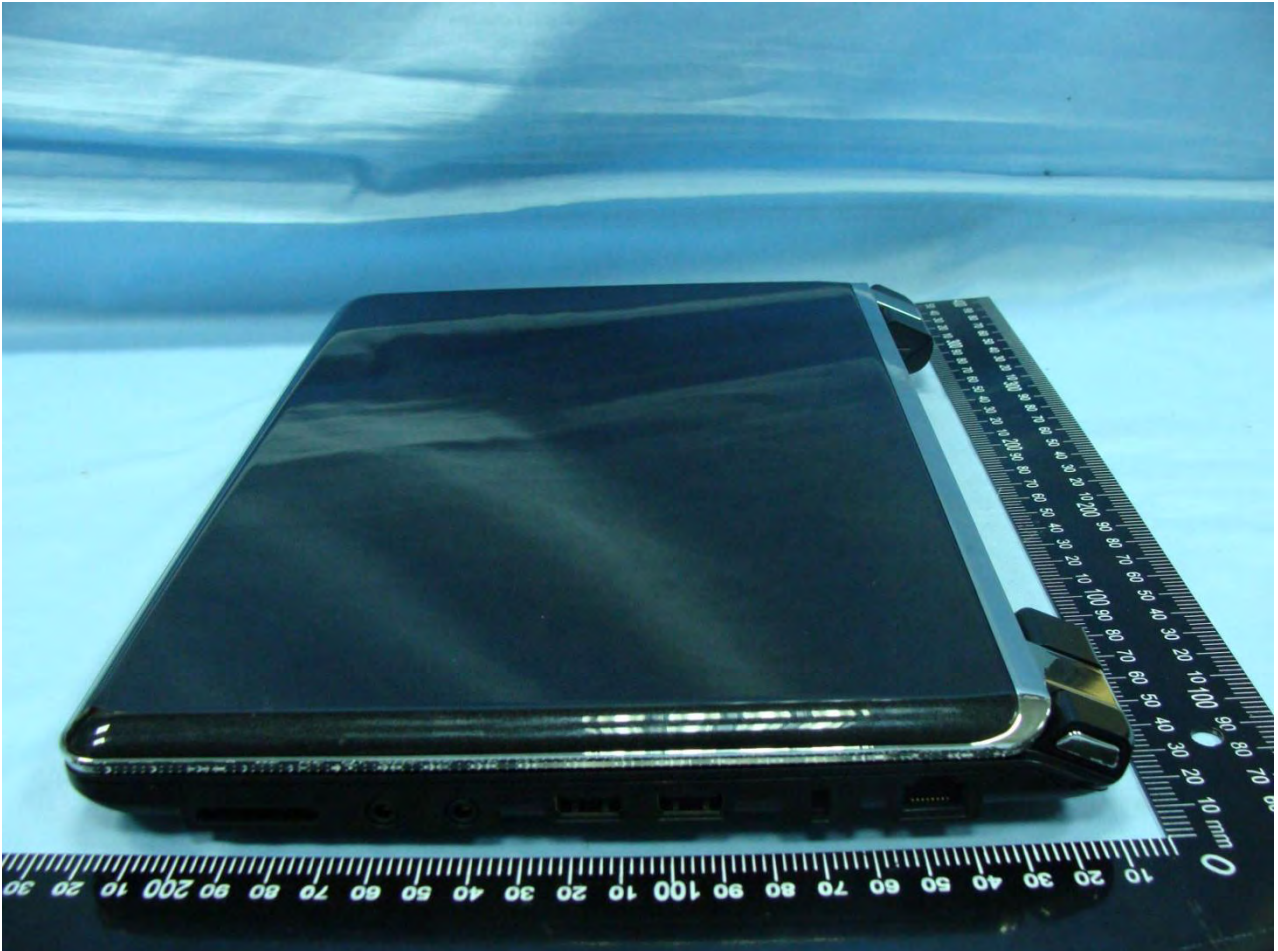
Host: Notebook Computer

(FT2* (“*” can be 0-9, a-z, A-Z or Blank); FT3*** (“*” can be 0-9, a-z, A-Z or Blank); HSG1121)**



Host: Notebook Computer

(FT2*** (“*” can be 0-9, a-z, A-Z or Blank); FT3*** (“*” can be 0-9, a-z, A-Z or Blank); HSG1121)



Host: Notebook Computer

(FT2*** (“*” can be 0-9, a-z, A-Z or Blank); FT3*** (“*” can be 0-9, a-z, A-Z or Blank); HSG1121)



Host: Notebook Computer

(FT2* (“**” can be 0-9, a-z, A-Z or Blank); FT3*** (“**” can be 0-9, a-z, A-Z or Blank); HSG1121)**



Host: Notebook Computer

(FT2*** (“**” can be 0-9, a-z, A-Z or Blank); FT3*** (“**” can be 0-9, a-z, A-Z or Blank); HSG1121)





Host: Notebook Computer

(FT2* (“**” can be 0-9, a-z, A-Z or Blank); FT3*** (“**” can be 0-9, a-z, A-Z or Blank); HSG1121)**



Host: Notebook Computer

(FT2*** (“**” can be 0-9, a-z, A-Z or Blank); FT3*** (“**” can be 0-9, a-z, A-Z or Blank); HSG1121)



Host: Notebook Computer

(FT2*** (“**”) can be 0-9, a-z, A-Z or Blank); FT3*** (“**”) can be 0-9, a-z, A-Z or Blank); HSG1121)





Host: Notebook Computer

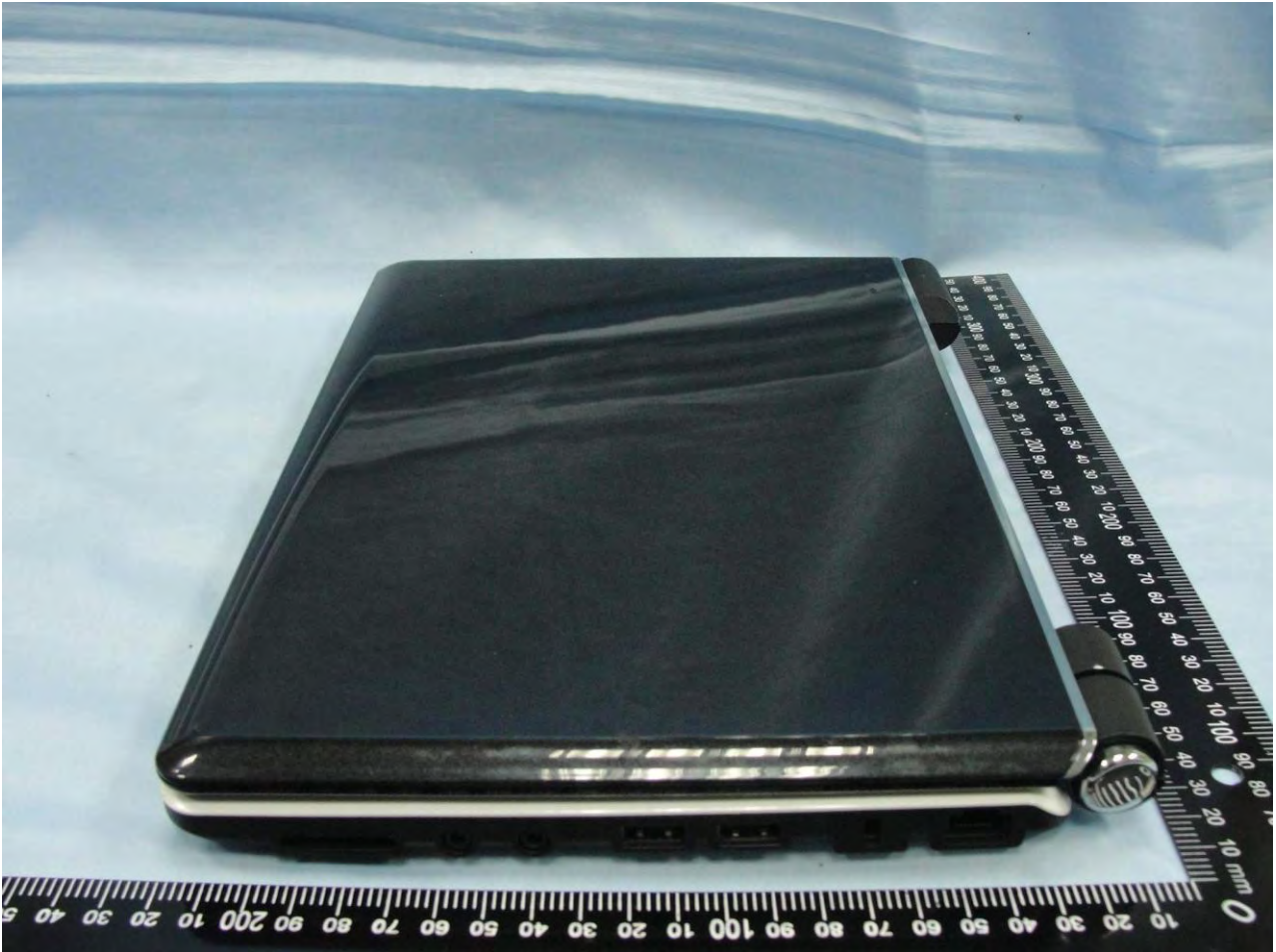
(FT2*** (“**” can be 0-9, a-z, A-Z or Blank); FT3*** (“**” can be 0-9, a-z, A-Z or Blank); HSG1121)





Host: Notebook Computer

(FT2*** (“**” can be 0-9, a-z, A-Z or Blank); FT3*** (“**” can be 0-9, a-z, A-Z or Blank); HSG1121)



Host: Notebook Computer

(FT2*** (“*” can be 0-9, a-z, A-Z or Blank); FT3*** (“*” can be 0-9, a-z, A-Z or Blank); HSG1121)





Host: Notebook Computer

(FT2*** (“**” can be 0-9, a-z, A-Z or Blank); FT3*** (“**” can be 0-9, a-z, A-Z or Blank); HSG1121)



Host: Notebook Computer

(FT2*** (“*” can be 0-9, a-z, A-Z or Blank); FT3*** (“*” can be 0-9, a-z, A-Z or Blank); HSG1121)





Host: Notebook Computer

(FT2* (“**” can be 0-9, a-z, A-Z or Blank); FT3*** (“**” can be 0-9, a-z, A-Z or Blank); HSG1121)**





Host: Notebook Computer

(FT2*** (“**” can be 0-9, a-z, A-Z or Blank); FT3*** (“**” can be 0-9, a-z, A-Z or Blank); HSG1121)

FT34





Host: Notebook Computer

(FT2*** (“**” can be 0-9, a-z, A-Z or Blank); FT3*** (“**” can be 0-9, a-z, A-Z or Blank); HSG1121)



Host: Notebook Computer

(FT2*** (“*” can be 0-9, a-z, A-Z or Blank); FT3*** (“*” can be 0-9, a-z, A-Z or Blank); HSG1121)





Host: Notebook Computer

(FT2*** (“*” can be 0-9, a-z, A-Z or Blank); FT3*** (“*” can be 0-9, a-z, A-Z or Blank); HSG1121)



Host: Notebook Computer

(FT2*** (“**” can be 0-9, a-z, A-Z or Blank); FT3*** (“**” can be 0-9, a-z, A-Z or Blank); HSG1121)



Host: Notebook Computer

(FT2*** (“*” can be 0-9, a-z, A-Z or Blank); FT3*** (“*” can be 0-9, a-z, A-Z or Blank); HSG1121)





Host: Notebook Computer
(FT2*** (“*” can be 0-9, a-z, A-Z or Blank); FT3*** (“*” can be 0-9, a-z, A-Z or Blank); HSG1121)



Host: Notebook Computer

(FT2*** (“*” can be 0-9, a-z, A-Z or Blank); FT3*** (“*” can be 0-9, a-z, A-Z or Blank); HSG1121)



2. **Photograph of Accessory**

Host: Notebook Computer

(FT2*** (“**” can be 0-9, a-z, A-Z or Blank); FT3*** (“**” can be 0-9, a-z, A-Z or Blank); HSG1121)

Adapter 1



Host: Notebook Computer

(FT2*** (“*” can be 0-9, a-z, A-Z or Blank); FT3*** (“*” can be 0-9, a-z, A-Z or Blank); HSG1121)



Host: Notebook Computer

(FT2*** (“**” can be 0-9, a-z, A-Z or Blank); FT3*** (“**” can be 0-9, a-z, A-Z or Blank); HSG1121)



Host: Notebook Computer

(FT2*** (“**” can be 0-9, a-z, A-Z or Blank); FT3*** (“**” can be 0-9, a-z, A-Z or Blank); HSG1121)

Adapter 2



Host: Notebook Computer

(FT2*** (“**” can be 0-9, a-z, A-Z or Blank); FT3*** (“**” can be 0-9, a-z, A-Z or Blank); HSG1121)



Host: Notebook Computer

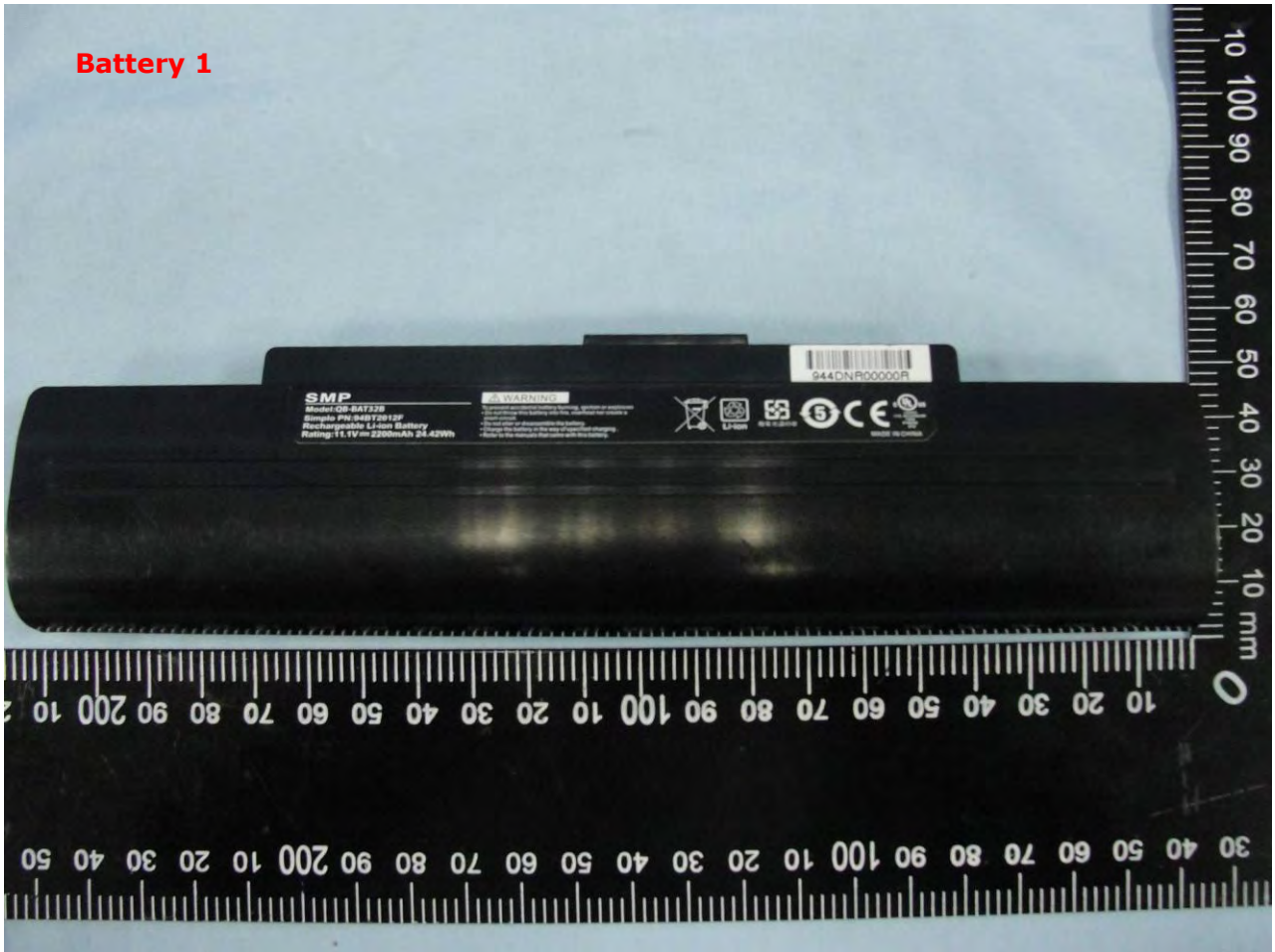
(FT2*** (“**” can be 0-9, a-z, A-Z or Blank); FT3*** (“**” can be 0-9, a-z, A-Z or Blank); HSG1121)



Host: Notebook Computer

(FT2*** (“**” can be 0-9, a-z, A-Z or Blank); FT3*** (“**” can be 0-9, a-z, A-Z or Blank); HSG1121)

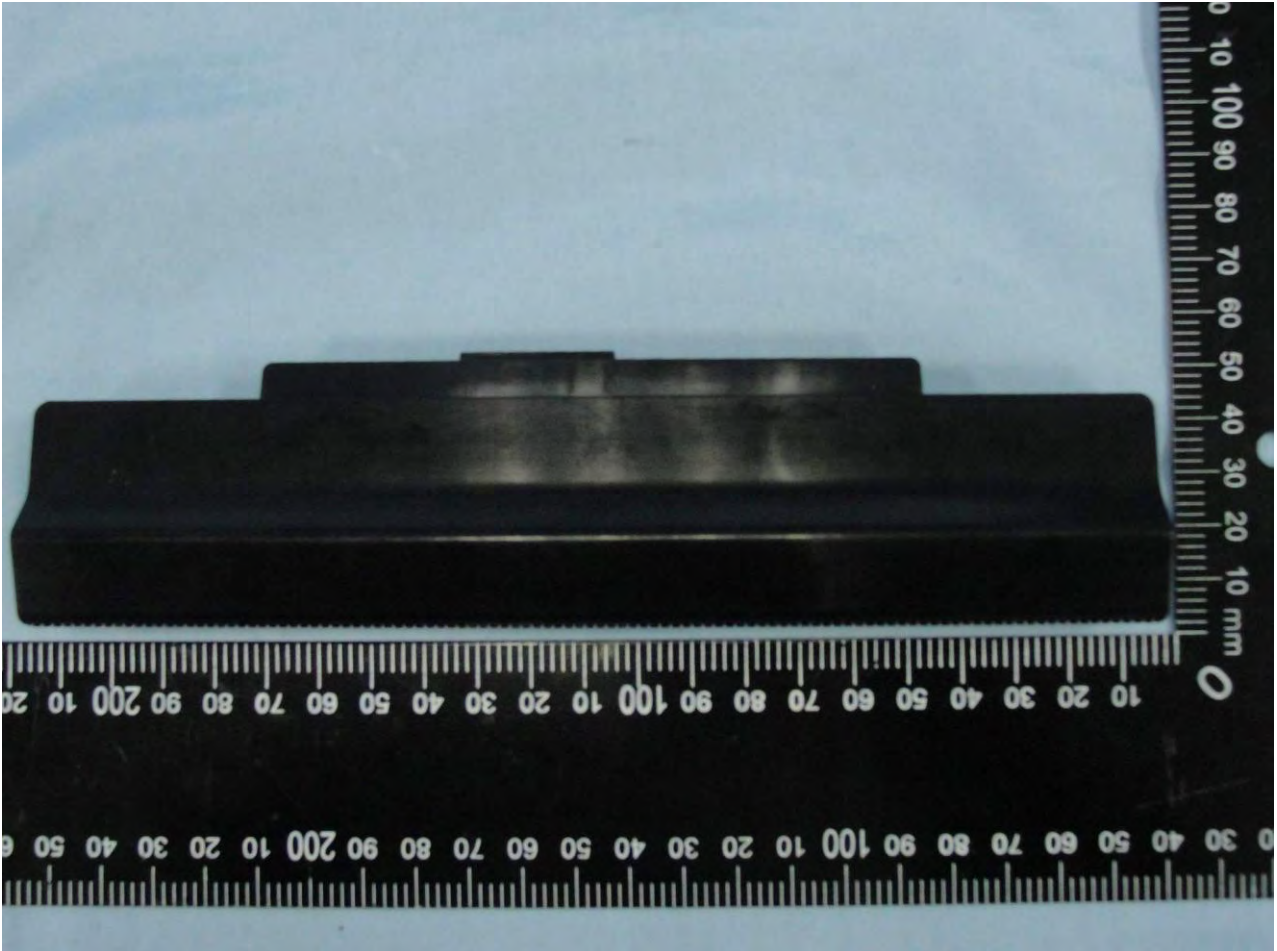
Battery 1





Host: Notebook Computer

(FT2* (“*” can be 0-9, a-z, A-Z or Blank); FT3*** (“*” can be 0-9, a-z, A-Z or Blank); HSG1121)**





Host: Notebook Computer

(FT2*** (“**” can be 0-9, a-z, A-Z or Blank); FT3*** (“**” can be 0-9, a-z, A-Z or Blank); HSG1121)



Host: Notebook Computer

(FT2*** (“**” can be 0-9, a-z, A-Z or Blank); FT3*** (“**” can be 0-9, a-z, A-Z or Blank); HSG1121)

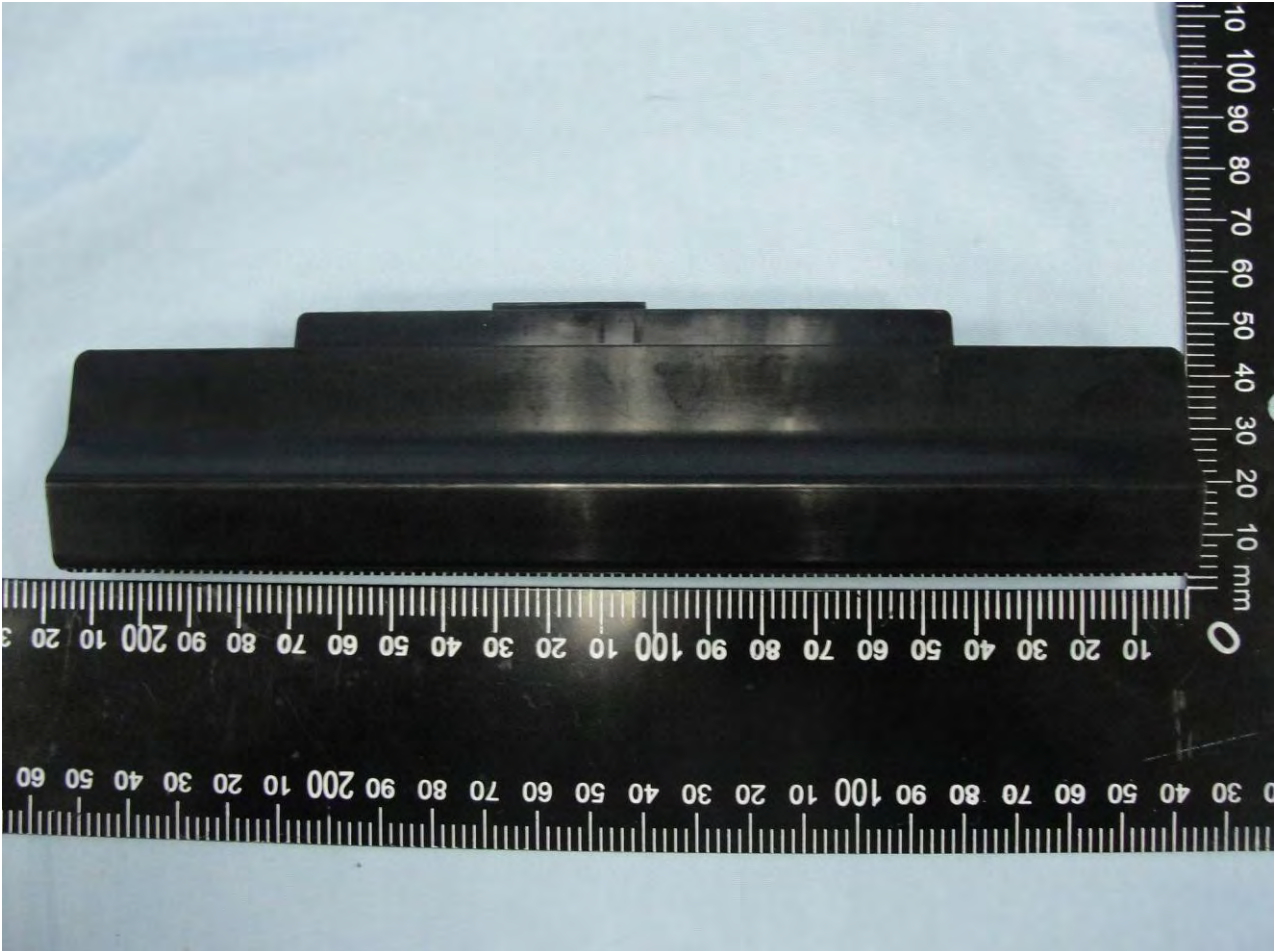
Battery 2





Host: Notebook Computer

(FT2*** (“**” can be 0-9, a-z, A-Z or Blank); FT3*** (“**” can be 0-9, a-z, A-Z or Blank); HSG1121)





Host: Notebook Computer

(FT2*** (“**” can be 0-9, a-z, A-Z or Blank); FT3*** (“**” can be 0-9, a-z, A-Z or Blank); HSG1121)



Host: Notebook Computer

(FT2*** (“**” can be 0-9, a-z, A-Z or Blank); FT3*** (“**” can be 0-9, a-z, A-Z or Blank); HSG1121)





Host: Notebook Computer

(FT2*** (“*” can be 0-9, a-z, A-Z or Blank); FT3*** (“*” can be 0-9, a-z, A-Z or Blank); HSG1121)





Host: Notebook Computer

(FT2*** (“**” can be 0-9, a-z, A-Z or Blank); FT3*** (“**” can be 0-9, a-z, A-Z or Blank); HSG1121)



Host: Notebook Computer

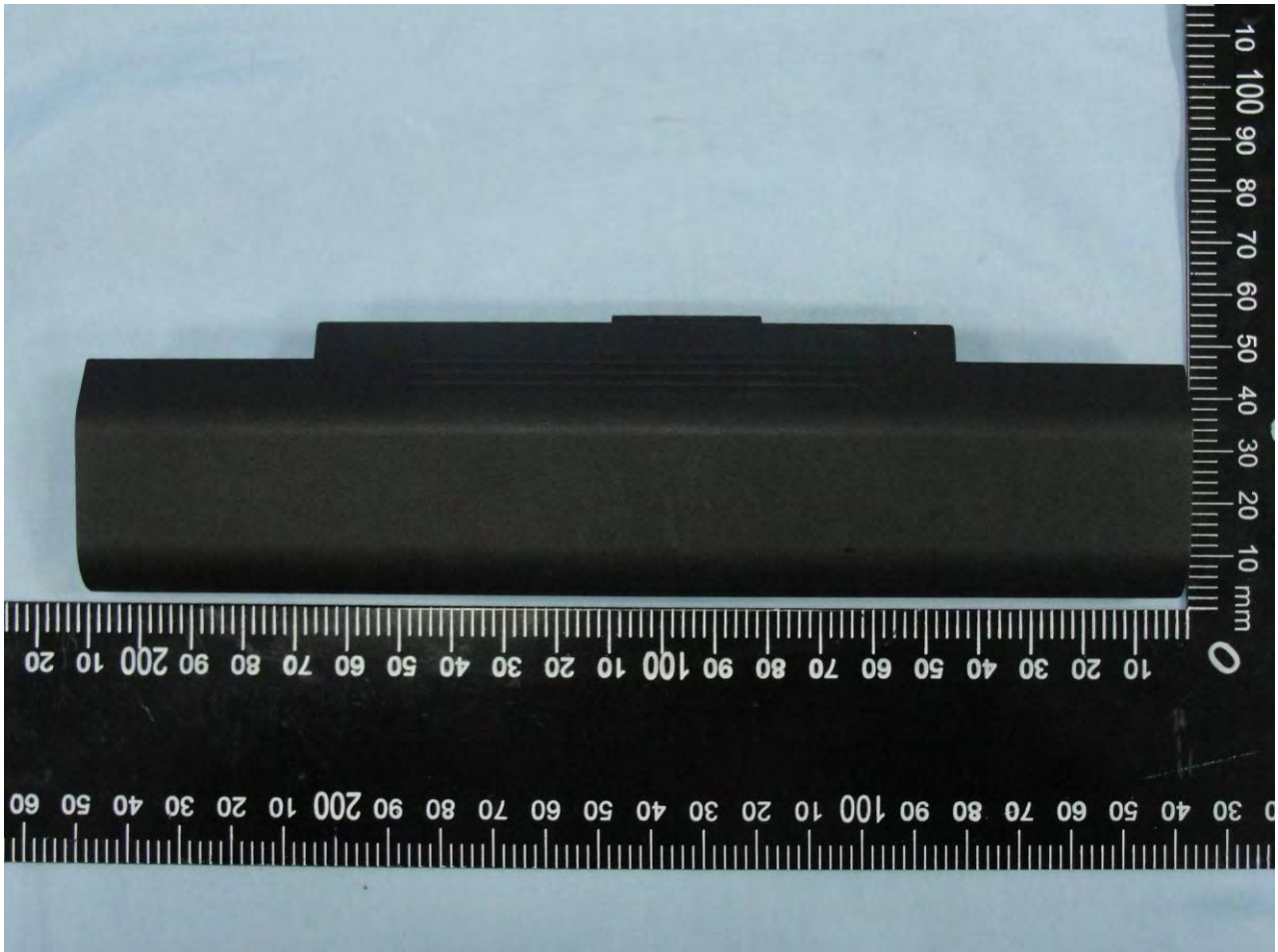
(FT2*** (“**” can be 0-9, a-z, A-Z or Blank); FT3*** (“**” can be 0-9, a-z, A-Z or Blank); HSG1121)

Battery 4



Host: Notebook Computer

(FT2*** (“**” can be 0-9, a-z, A-Z or Blank); FT3*** (“**” can be 0-9, a-z, A-Z or Blank); HSG1121)





Host: Notebook Computer

(FT2*** (“**” can be 0-9, a-z, A-Z or Blank); FT3*** (“**” can be 0-9, a-z, A-Z or Blank); HSG1121)



Host: Notebook Computer

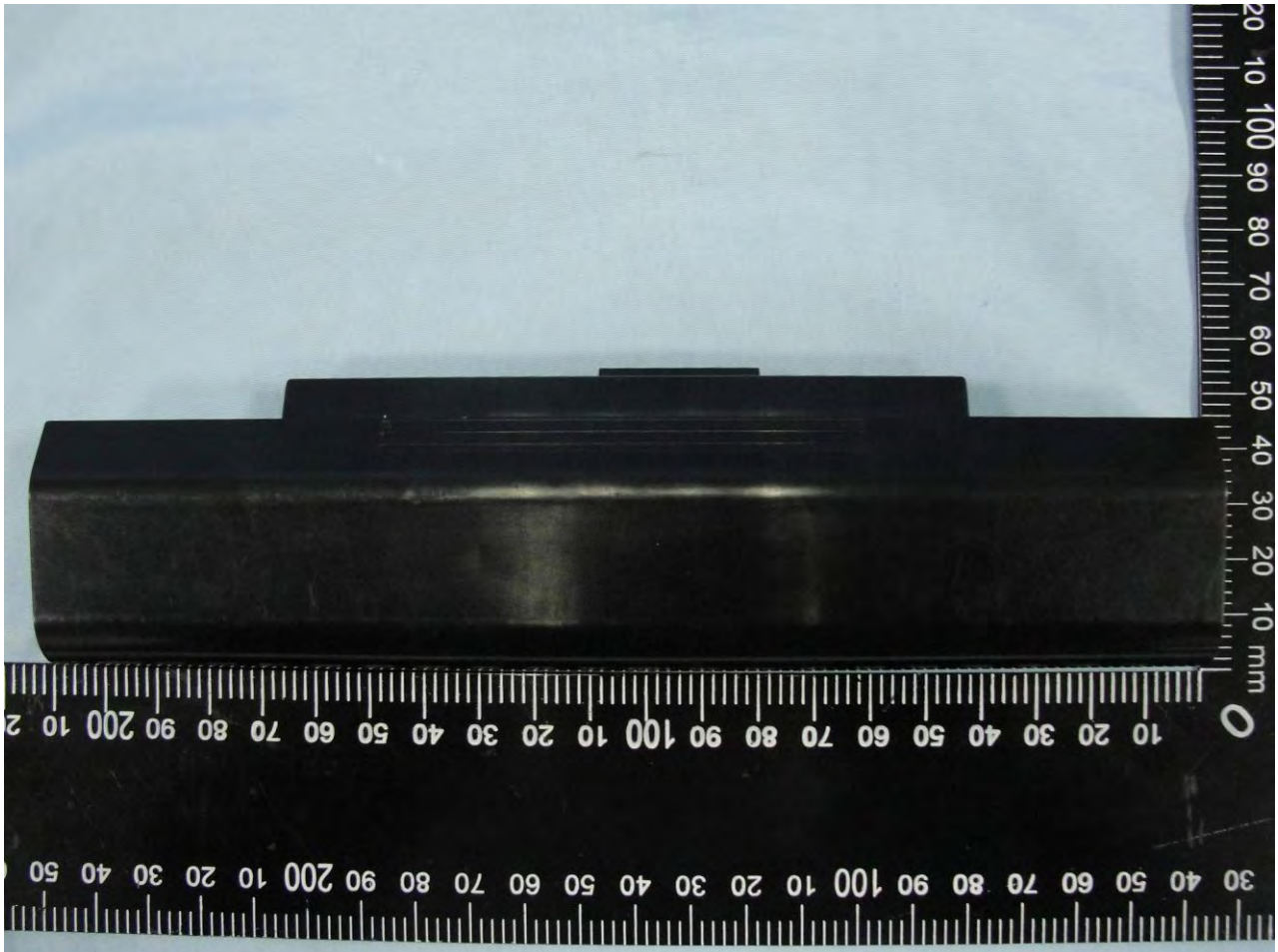
(FT2*** (“**” can be 0-9, a-z, A-Z or Blank); FT3*** (“**” can be 0-9, a-z, A-Z or Blank); HSG1121)





Host: Notebook Computer

(FT2*** (“*” can be 0-9, a-z, A-Z or Blank); FT3*** (“*” can be 0-9, a-z, A-Z or Blank); HSG1121)





Host: Notebook Computer

(FT2*** (“**” can be 0-9, a-z, A-Z or Blank); FT3*** (“**” can be 0-9, a-z, A-Z or Blank); HSG1121)



Host: Notebook Computer

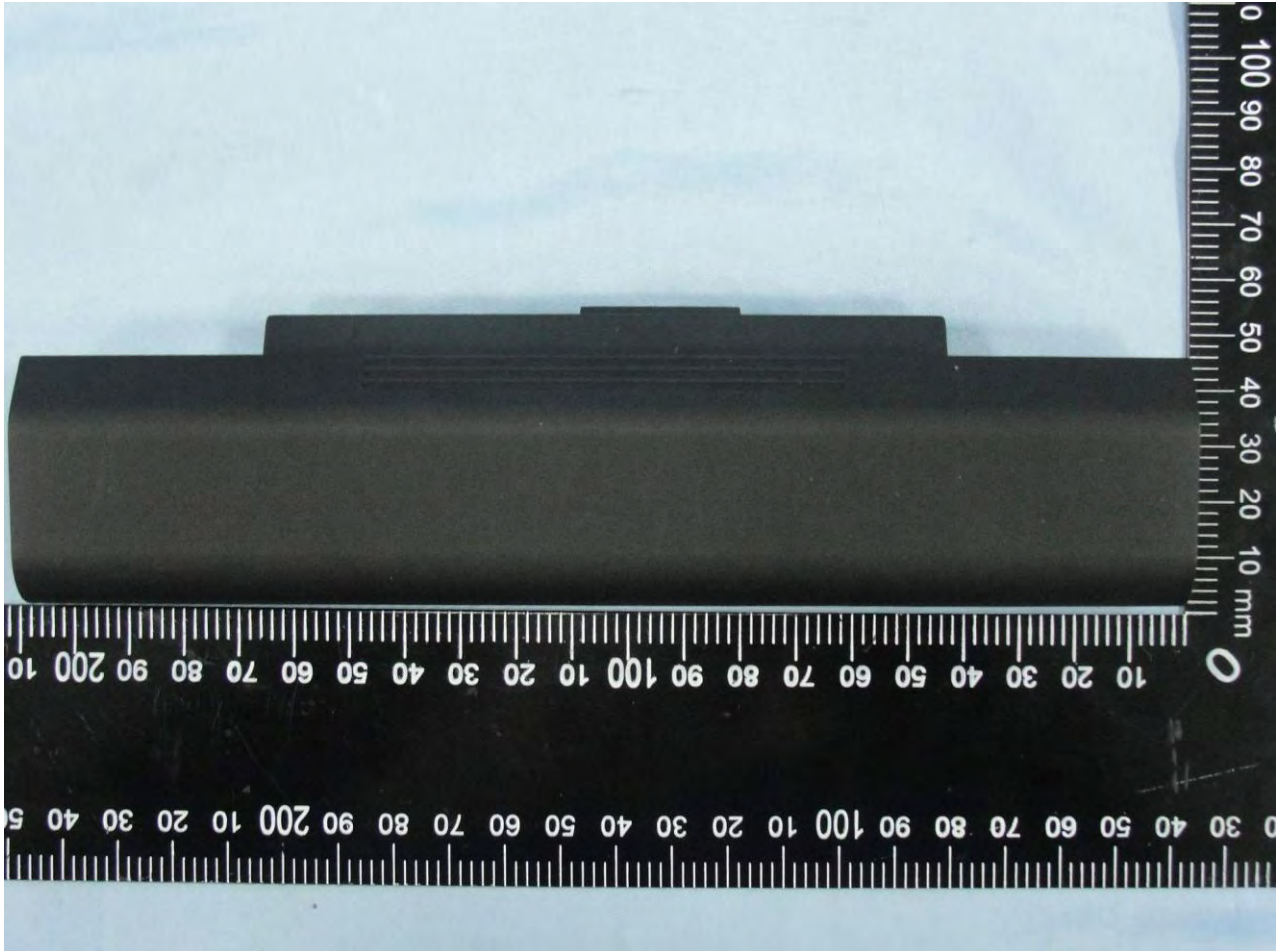
(FT2*** (“**”) can be 0-9, a-z, A-Z or Blank); FT3*** (“**”) can be 0-9, a-z, A-Z or Blank); HSG1121)





Host: Notebook Computer

(FT2*** (“*” can be 0-9, a-z, A-Z or Blank); FT3*** (“*” can be 0-9, a-z, A-Z or Blank); HSG1121)





Host: Notebook Computer

(FT2*** (“*” can be 0-9, a-z, A-Z or Blank); FT3*** (“*” can be 0-9, a-z, A-Z or Blank); HSG1121)

