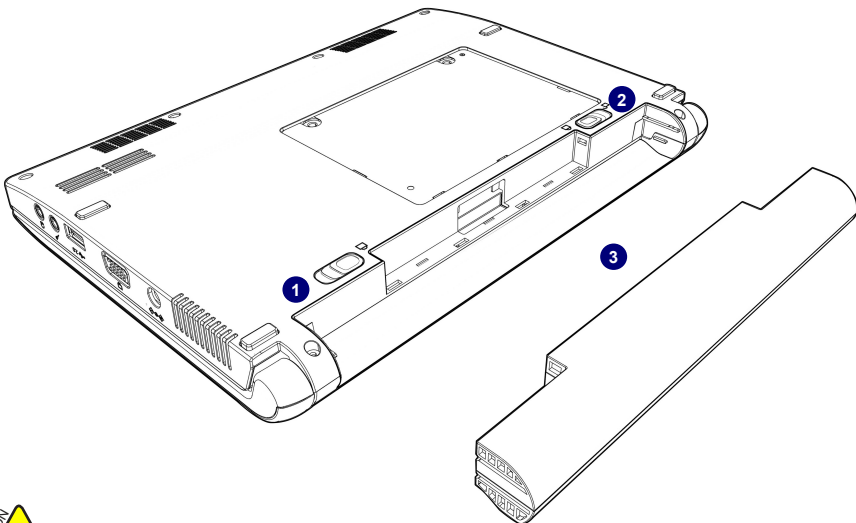


Removing the Battery

Step 1: Shut down the Netbook. Disconnect all cables and devices.

Step 2: Turn the Netbook over and unlock the battery by pushing the Battery Lock outwards.

Step 3: Push the Battery Latch outwards and hold it in place with your finger. Now use the other hand to pull the battery out.



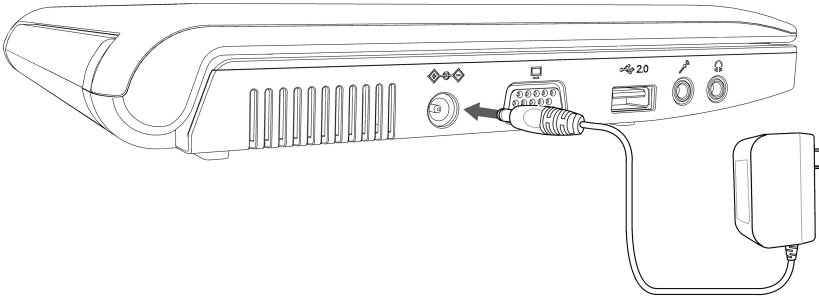
Do not remove the battery while the Netbook is still running. This may damage the data on the hard disk.

2. Connecting the Power Supply

1

Step 1: Insert the round end of the power supply transformer into the charging port on the left side of the Netbook.

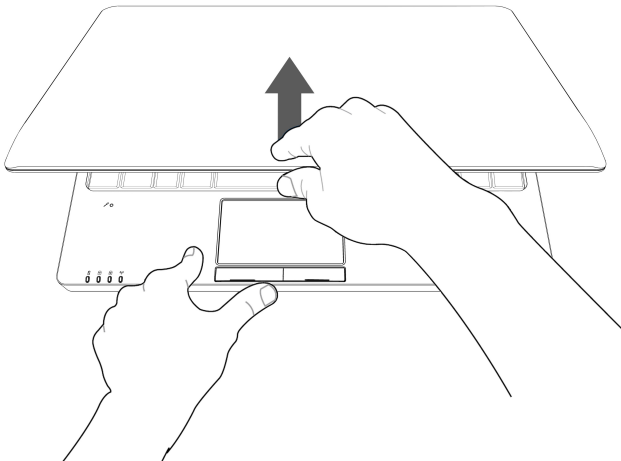
Step 2: Insert the other end of the power supply transformer into a power socket.



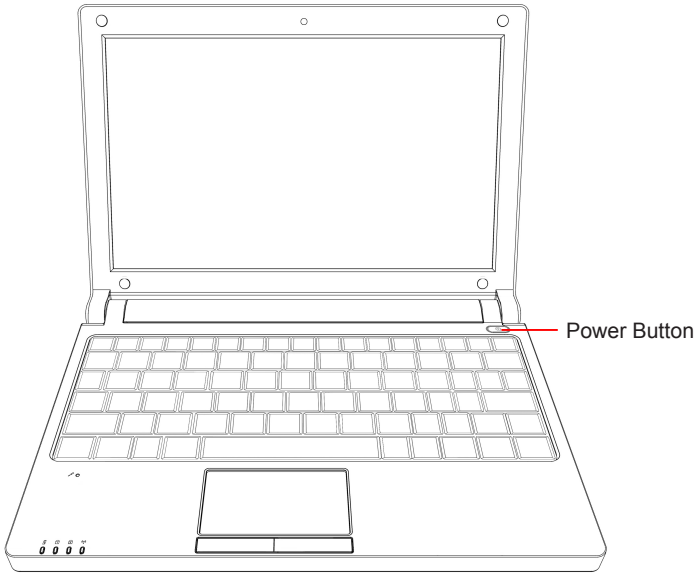
The power connector for the power socket may vary depending on the local national standards. The appropriate connector will be bundled with your Netbook. Please always use the adapter when connecting the power supply. The connector shown here may not match the type included in the box and is provided for reference purposes only.

3. Startup

Step 1: Open the screen of your Netbook.



Step 2: Turn on the machine by pressing the Power Button.



4. Emergency Shutdown

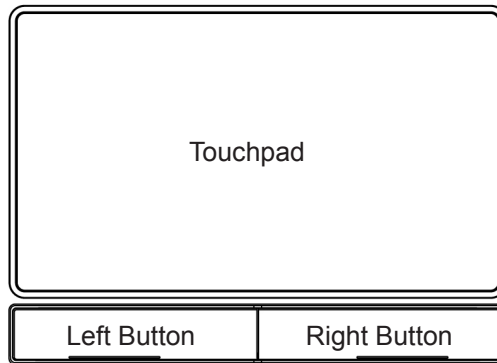
When the Netbook cannot be shut down through normal means, please press and hold the Power Button until the Netbook powers off.

1-3 Using the Touchpad

1. Introduction to the Touchpad

The touchpad is like a computer mouse. It senses the pressure from the user's finger and generates a voltage that is used to control the cursor's movements and issue commands.

The touchpad senses finger movements. Simply move one finger across the touchpad to control the movement of the cursor on screen. Below the touchpad is two buttons. The left button is like the left mouse button and is used for selecting options or launching programs on screen. The right button works the same way as the right mouse button.



2. Single Tap/ Single Click

To select a window function or press a button icon, move your finger across the touchpad to move the cursor to the window or button to select. Now tap the touchpad with your finger to perform the action. This action is equivalent to pressing the left mouse button. You can also press the left touchpad button for the same effect.

3. Double Tap/ Double Click

To open a file or document, move your finger across the touchpad to move the cursor to the file you wish to open. Now quickly tap the touchpad twice with your finger to perform the action. This action is equivalent to pressing the left mouse button twice. You can also press the left touchpad button twice for the same effect.

4. Drag

Move your finger across the touchpad to move the cursor to the object you wish to drag. Now hold down the left touchpad button with one hand and move the cursor to the desired location. Release the button and complete the drag operation. You can also double tap the object you wish to drag and keep the finger on the touchpad after the second tap to perform the drag operation with one hand.



This chapter introduces the following information for you:

- Overview
- Using Web Camera
- Special Function Keys
- MMC/SD/MS Dummy Card
- Using WWAN
- Using Wireless LAN

2-1 Overview

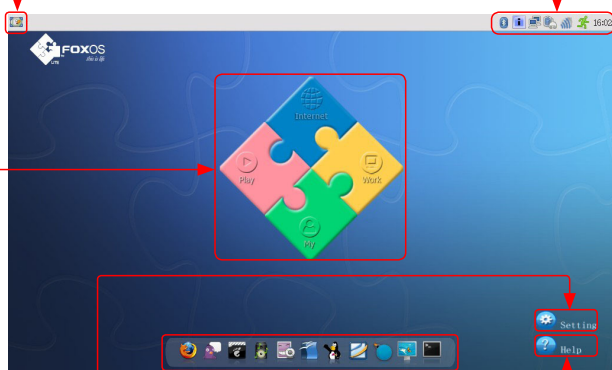
After turning on the Netbook, when you log in Netbook's pre-loaded FoxOS system, the following screen will appear:

2

From left to right is in turn:

- a. Show Desktop icon
- b. Bluetooth icon(optional)
- c. iBus Input Method icon
- d. Network Connection status icon
- e. Power icon
- f. Volume icon
- g. Exit icon
- h. Time icon

The four parts provide various applications to meet the needs of your work, life and entertainment, detailed refer to help page.



You can click these icons to go to the corresponding utilities.

Click "Setting" to open the page to optimize the system.

Click "Help" to open the page, please refer to the content of the page about detailed description of the system.

2-2 Using web camera

Click "Play"->"Webcam" to open the web camera, you can take photo and record through the camera. About detailed information please refer to help page.

2-3 Special Function Keys

The following defines some special function keys on the netbook.

Function Keys	Description
Fn + F1	WWAN on or off
Fn + F2	Wireless LAN on or off
Fn + F3	Touchpad on or off
Fn + F4	Switches to the external display
Fn + F5	Audio on or off
Fn + F9	To terminate some applications
Fn + F10	Toggles the "Print Screen" key to initiate screen capture utility to capture, save or print the contents of desktop
Fn + F11	F12 / Enters into the dialog box of "Save As" in Windows Office applications
Fn + Page Up	Presses to move the cursor to the beginning of the line
Fn + Page Down	Presses to move the cursor to the end of the line
Fn + Ins	"Number Lock" on or off
Fn + Del	"Scroll Lock" on or off
Fn + Esc	In S3 mode
Fn + ↑ (up arrow)	Increases the display brightness
Fn + ↓ (down arrow)	Decreases the display brightness
Fn + ← (left arrow)	Decreases the system volume
Fn + → (right arrow)	Increases the system volume

2-4 MMC/SD/MS Dummy Card

There is a dummy card in our Netbook, the figure is as shown below. The main function of the card is to prevent dust into the computer. When you use the MMC/SD/MS card slot, press down the dummy card with your finger and take the popping card out.

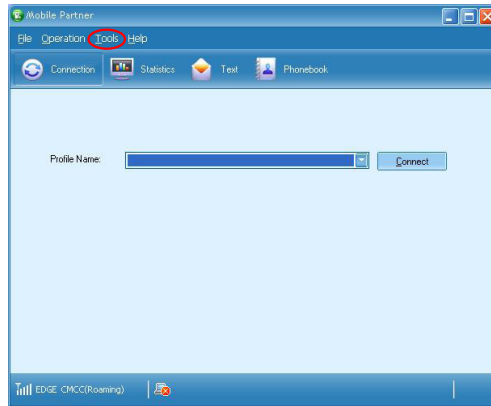


2-5 Using WWAN (optional)

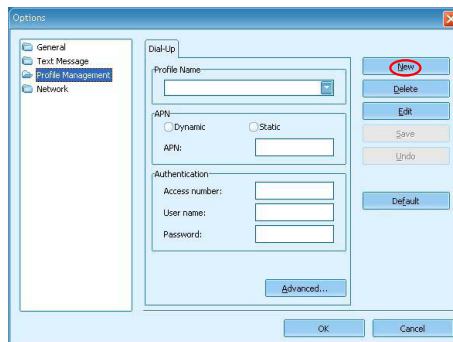
Let me take EM770 module as an example to simply introduce how to connect WWAN in Windows XP, the steps are as below. Please refer to the file "utps_content_concept_00001.html" for details about the WWAN, its path is as below:

In system path -> Program Files -> Mobile Partner -> usermanual -> en-us -> usermanual ->utps_content_concept_00001.html

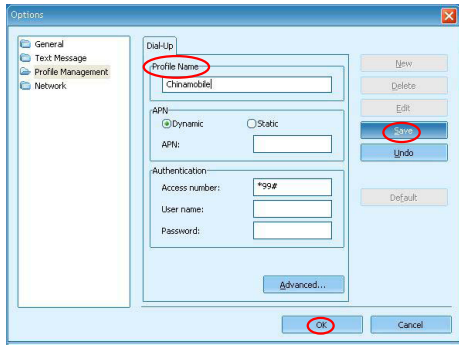
1. Double click "Mobile Partner" on desktop to open the figure as shown below:



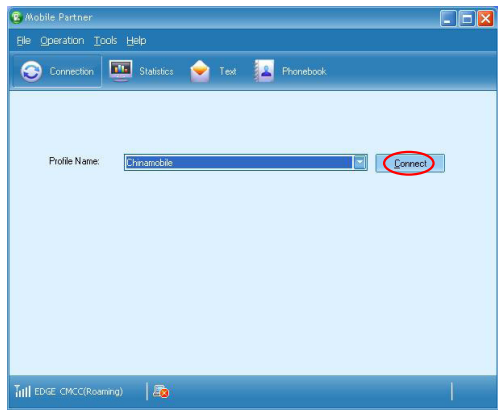
2. Click "Tools" -> "Options", and select "Profile Management" in popping window, the figure is shown as below:



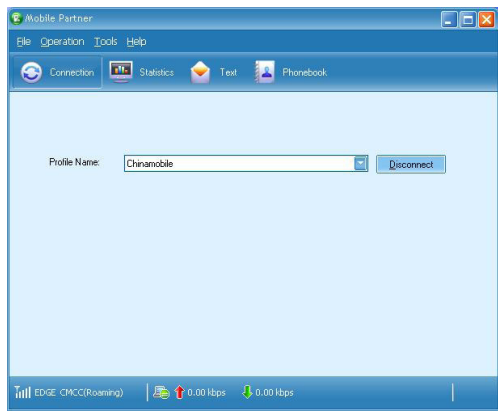
3. Click "New" and input the name in "Profile Name" column, like Chinamobile, then click "Save" and "OK".



4. Click "Connect" to start the connection.



5. You can access the internet when the figure is shown as below.



Remark - How to install the SIM card

Please install the SIM card according to the following details:

Power off the Netbook and shut down power supply, then remove the battery (please refer to page 7 for details about removing the battery), and you will see the SIM card slot, as the picture shown. Please insert the SIM card into the slot (as the arrow shown) and make sure that the gold pins of SIM card are downward.

2



SIM card slot



Please do not insert or pull out the SIM card when power-on, otherwise the data may lose or the card would be damaged.

2-6 Using Wireless LAN

You can use wireless LAN with the Netbook. This part mainly introduces wireless LAN and its connection.

I: Introduce wireless LAN

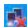
1. Wireless LAN:

Wireless networks use radio waves as information transmission medium to consist of wireless LAN (WLAN), the main difference lies in the wireless networks using wireless technology instead of string.

2. Wireless card and Access wireless network:

Wireless card is a wireless terminal device which uses the wireless connection with the coverage of the wireless LAN. You can access wireless network, if there is a wireless router or the coverage of wireless AP around (Please refer to the wireless router's manual about its connections and settings); Attach a device to the Netbook and enclose a card as mobile phone card inside when you go telecommunication business hall to handle wireless. After that you can surf the Net wirelessly.

II: Connecting wireless LAN

Press "Fn + F2" to turn on the wireless LAN of the Netbook, the system will automatically search the available wireless network around and connect it. Or click icon  to manually choose the Internet connection.

If password is required, enter the password of wireless LAN to realize wireless connection.



3

This chapter introduces how to install Windows XP system for you, including following information:

- Install a new Windows XP system
- Install drivers in new Windows XP

Install Windows XP in Netbook

By default, the Netbook has been installed FoxOS system for you. But if you do not like the operation system interface, you can install Windows XP by yourself.

What kinds of hardware and software you need here :

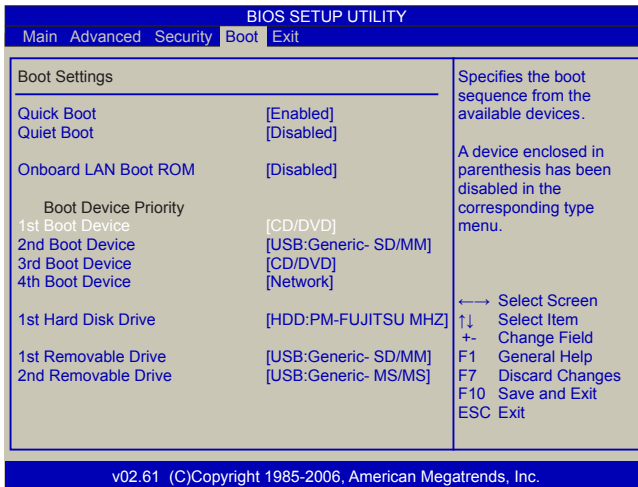
1. An USB DVD drive.
2. A Netbook driver CD.
3. Windows XP Install CD.

Before we continue :

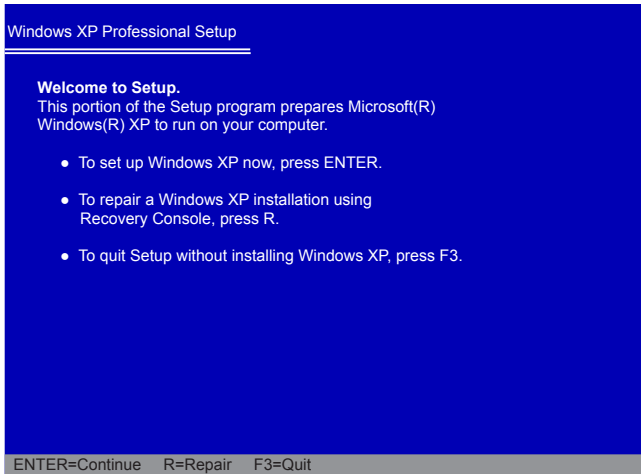
- Shut down your computer.
- Connect the USB DVD drive to an USB port of Netbook and connect the power cord to AC power.

3-1 Install a new Windows XP system

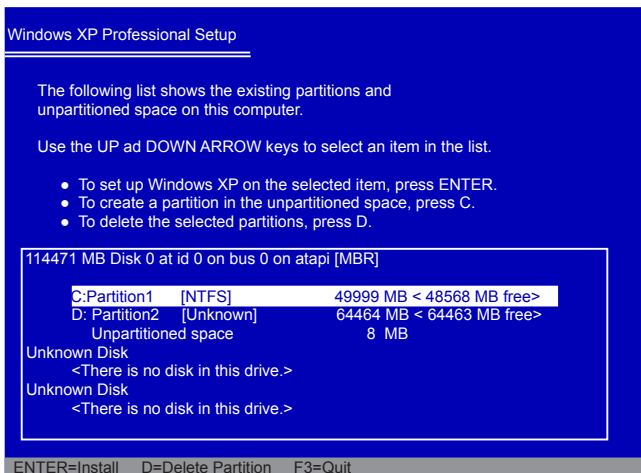
1. Press to enter BIOS setup during POST, set the "1st Boot Device" to "CD/DVD" in "Boot" menu, save changes and exit BIOS. The figure is as shown below:



2. Insert the Windows XP Install CD into the USB DVD drive. The computer will reboot, and it will start installing Windows XP Operating System. The figure is as shown below:



3. Press <Enter> to continue the installation and press <F8> to agree the Licensing Agreement. Windows will display the partition of your system. First of all, you had better press [D] to delete the partition, then you can press [C] to create partitions as many as you can, assign them C:, D: or E: logical drive name. In this example, we will create a 50GB partition C: and leave the remaining space as a partition D:. The figure is as shown below:



4. Press <Enter> to install Windows XP. The process will ask you to format hard disk, copy files...etc, follow the installation steps until the system is installed completely.

3-2 Install drivers in new Windows XP

1. After installing Windows XP, you have to install necessary drivers before using the Netbook. Insert the Netbook driver CD to the USB DVD drive, waiting for a few seconds, the main menu will be displayed on your Netbook screen.



2. Clicking these options to install all the drivers for your system. You must firstly click "Intel Chipset Driver" to install and then click "One Click Setup" to install the other drivers left, or you can click each individual driver to install it manually.
3. After all the drivers are installed, you need to restart your Netbook, then you can use it.

Recovery of Linux system

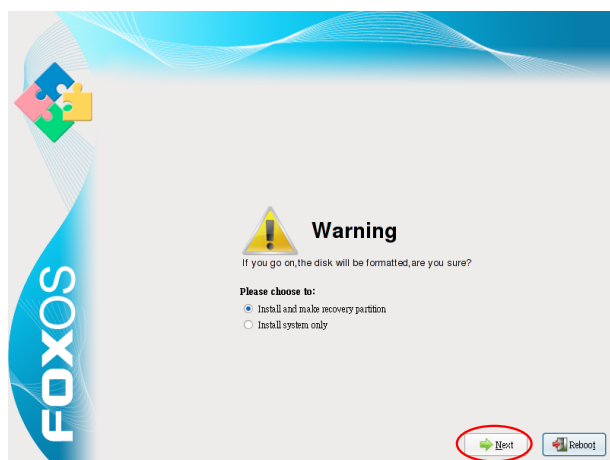
I From DVD to recover system

1 Boot from DVD

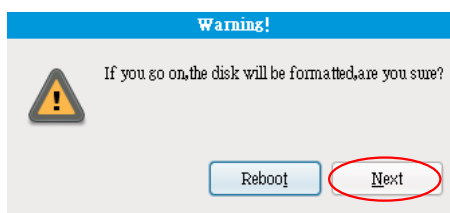
Power on the computer, insert the system Installation DVD into the DVD drive, press "ESC" to select booting system from the DVD drive.

2 Select the way of Installation

When the figure as below shows, select "**Install and make recovery partition**", the system will be installed and a recovery partition will be made. Or select "**Install system only**", the system will be installed without recovery partition, so recover system from hard disk is impossible.

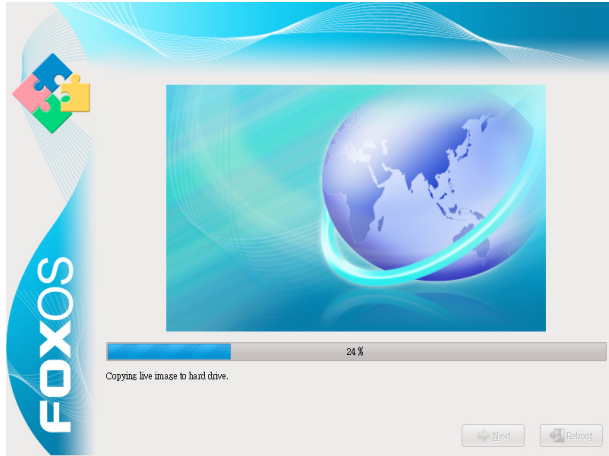


3 Click "Next", the warning box is shown as below:



4 Installing system

Click "Next" to format hard disk and install system. The figure is shown as below:

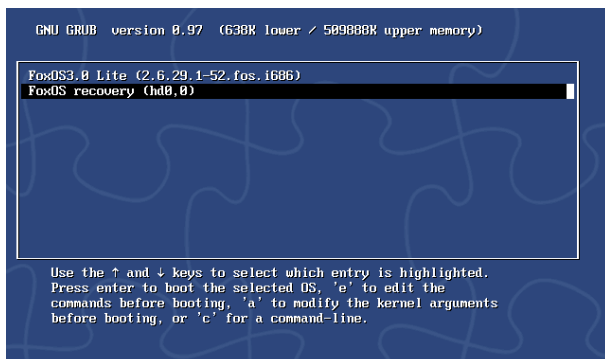


5 After installing, click "Reboot" to restart the system.

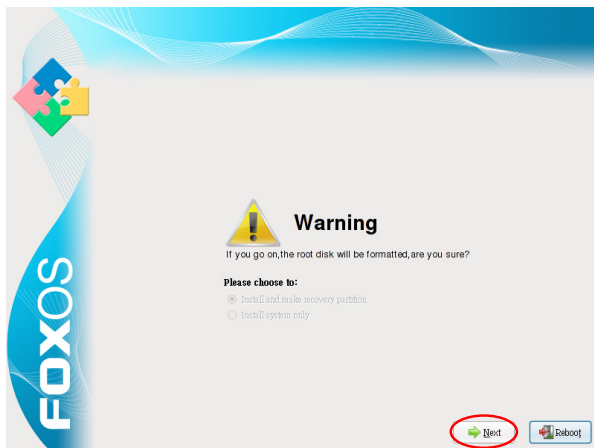


II From hard disk to recover system

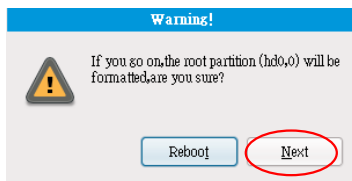
1 When you log in, according to the screen suggestion, press any key to enter Grub interface, the figure is as shown below:



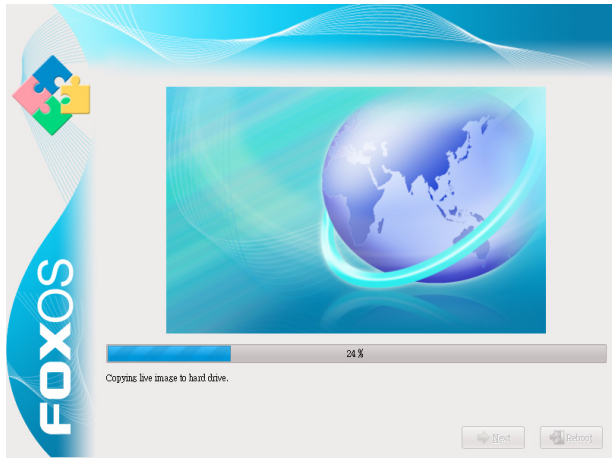
2 Select "FoxOS recovery" item and then press "Enter", the warning box is shown below:



3 Select "Next", system warns the root partition(hd0, 0) will be formatted. The figure is as shown below:



4 Click "Next" to format partition(hd0,0) and recover system from hard disk. The figure is as shown below:



5 When the process is completed, please reboot the system. The figure is as shown below:



Federal Communications Commission Statement

This device complies with FCC Rules Part 15. Operation is subject to the following two conditions:

- This device may not cause harmful interference, and
- This device must accept any interference received, including interference that may cause undesired operation.
-

This equipment has been tested and found to comply with the limits for a class B digital device, pursuant to Part 15 of the Federal Communications Commission (FCC) rules. These limits are designed to provide reasonable protection against harmful interference in a residential installation. This equipment generates, uses, and can radiate radio frequency energy and, if not installed and used in accordance with the instructions, may cause harmful interference to radio communications. However, there is no guarantee that interference will not occur in a particular installation. If this equipment does cause harmful interference to radio or television reception, which can be determined by turning the equipment off and on, the user is encouraged to try to correct the interference by one or more of the following measures:

- Reorient or relocate the receiving antenna.
- Increase the separation between the equipment and receiver.
- Connect the equipment into an outlet on a circuit different from that to which the receiver is connected.
- Consult the dealer or an experienced radio/TV technician for help.

The use of a shielded-type power cord is required in order to meet FCC emission limits and to prevent interference to the nearby radio and television reception. It is essential that only the supplied power cord be used. Use only shielded cables to connect I/O devices to this equipment. You are cautioned that changes or modifications not expressly approved by the party responsible for compliance could void your authority to operate the equipment.

Note:

Any changes or modifications not expressly approved by the party responsible for compliance could void the user's authority to operate this equipment. "The manufacture declares that this device is limited to Channels 1 through 11 in the 2.4GHz frequency by specified firmware controlled in the USA."

RF exposure warning

This equipment complies with FCC radiation exposure limits set forth for an uncontrolled environment. The equipment must not be co-located or operating in conjunction with any other antenna or transmitter. The measured SAR levels evaluated are in compliance with the FCC RF exposure guidelines.

Notebook SZ901P Max. SAR Measurement (1g) 0.00155W/kg