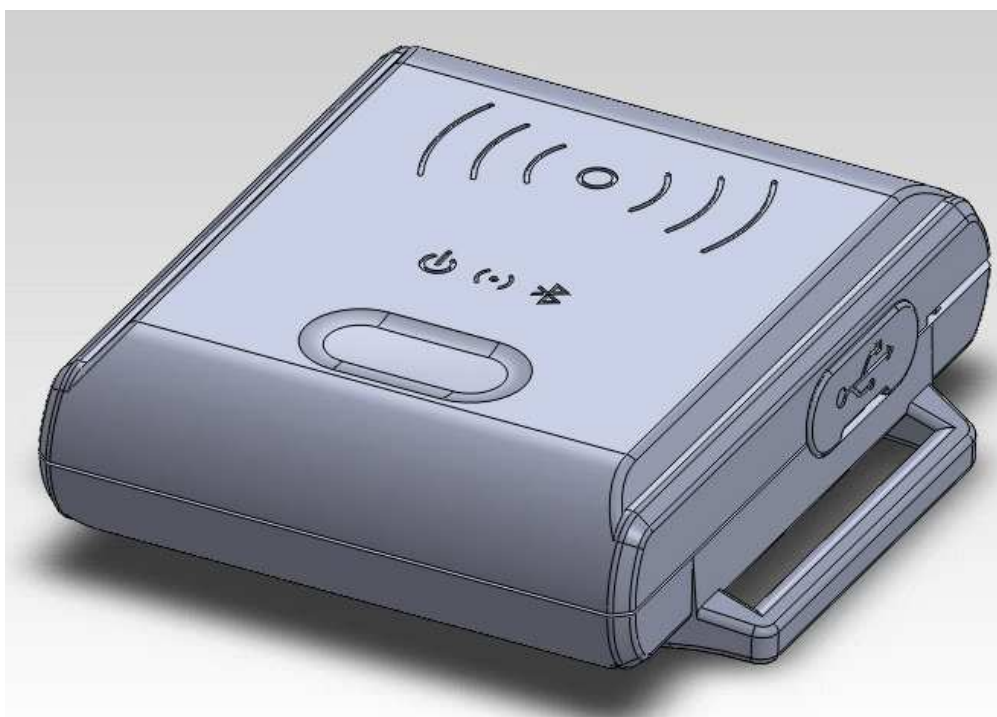




# FCCID: WXAWBR800 WRISTBAND RFID READER USER GUIDE



**TM970186**

September 05, 2013

**Copy right©2013:** without a written approval from GIGA-TMS INC, this document is not allowed to be duplicated for the public usage. The content is subjected to change without notice

#### Revision history

Version	Date of issue	Description
01	September 05, 2013	Default

## **Warning notice**

### **The Federal Communication Commission Statement**

This equipment has been tested and found to comply with the limits for a Class B Digital Device, pursuant to Part 15 of the FCC rules. These limits are designed to provide reasonable protection against harmful interference in a residential. This equipment generates, uses and can radiate radio frequency energy and, if not installed and used in accordance with the instruction, may cause harmful interference to radio communication. However, there is no guarantee that interference to radio or television reception, which can be determined by turning the equipment off and on, the user is encouraged to try to correct the interference by one of more of the following measures:

- \* Reorient or relocate the receiving antenna.
- \* Increase the separation between the equipment and receiver.
- \* Connect the equipment into an outlet on a circuit different from that to which the receiver is connected.
- \* Consult the dealer or an experienced Radio/TV technician for help.

Use only shielded cables to connect I/O devices to this equipment. You are cautioned that change or modifications not expressly approved by the party responsible for compliance could void your authority to operate the equipment.

**THIS DEVICE COMPLIES WITH PART 15 OF FCC RULES. OPERATION IS SUBJECT TO THE FOLLOWING TWO CONDITIONS:**

1. This device may not cause harmful interference and
2. This device must accept any interference received, including interference that may cause undesired operation.

The antenna used for this transmitter must not be collocated or operation in conjunction with any other antenna or transmitter.

Notice : The changes or modifications not expressly approved by the party responsible for compliance could void the user's authority to operate the equipment.

**IMPORTANT NOTE:** To comply with the FCC RF exposure compliance requirements, no change to the antenna or the device is permitted. Any change to the antenna or the device could result in the device exceeding the RF exposure requirements and void user's authority to operate the device.

## Table of contents

<a href="#"><u>Introduction</u></a> .....	1
<a href="#"><u>What's in the box</u></a> .....	1
<a href="#"><u>Optional accessories</u></a> .....	2
<a href="#"><u>Specification</u></a> .....	3
<a href="#"><u>Reader status</u></a> .....	4
<a href="#"><u>Connections for setting</u></a> .....	6
<a href="#"><u>Operational Description</u></a> .....	7
<a href="#"><u>Contact us</u></a> .....	8

## Introduction

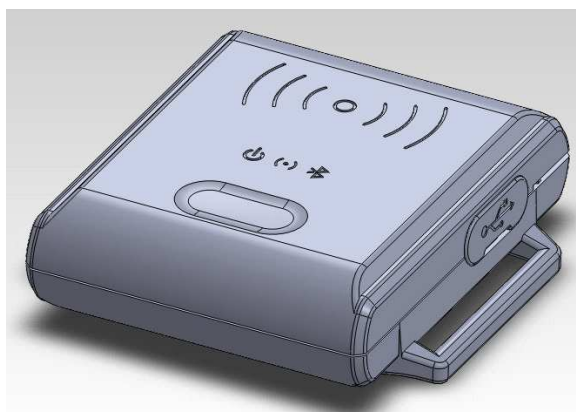
WBR800 is a slightly designed high frequency RFID reader with ISO15693. It has widely varied applications such as Asset Control, Transportation Management, Logistic of Items Management...etc.

We strongly suggest you to read this manual in details before you start the setup.

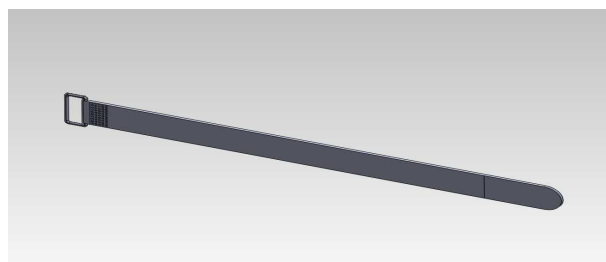
## What's in the box?

WBR800 set is delivered with the basic package covering: One WBR800 Reader, one CD and one accessory package as below illustration.

Please check the package first to make sure you have received the device and the components before you start to configure or install the WBR800 reader.



WBR800 Reader



Wristband

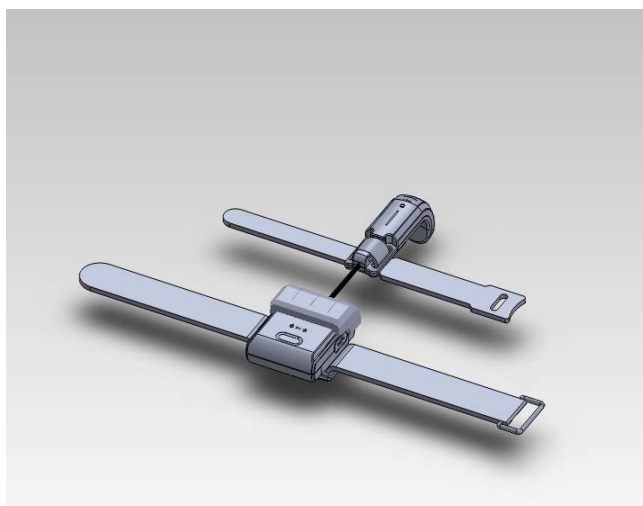
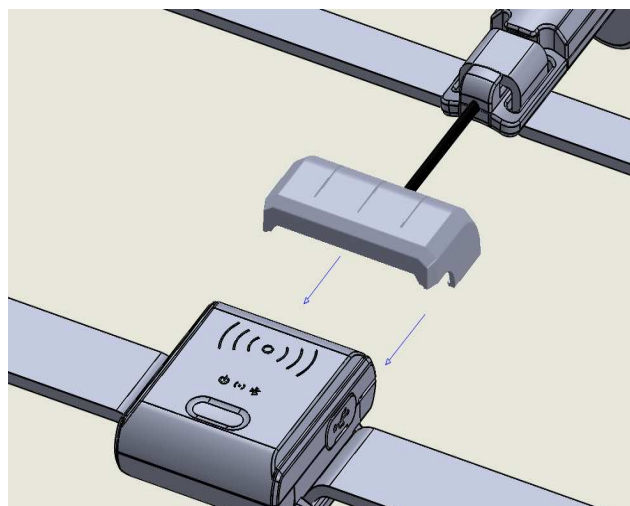
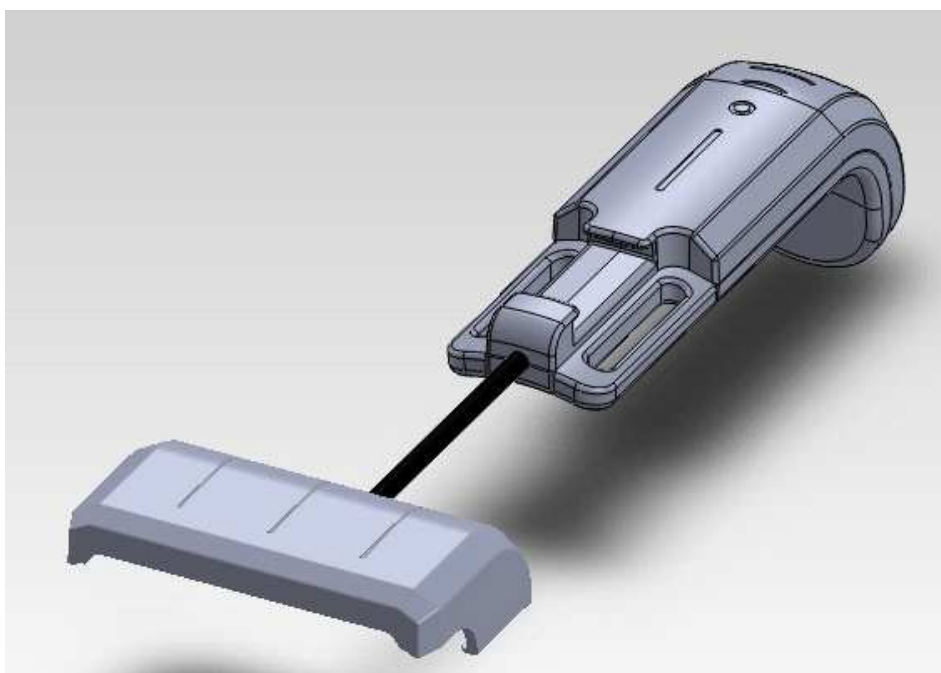


WAS-T0675-R Cable

## Optional accessories

Following parts are available to purchase from GIGA-TMS to work with WBR800 Reader. Go to [promag@gigatms.com.tw](mailto:promag@gigatms.com.tw) for sales inquiry of these items.

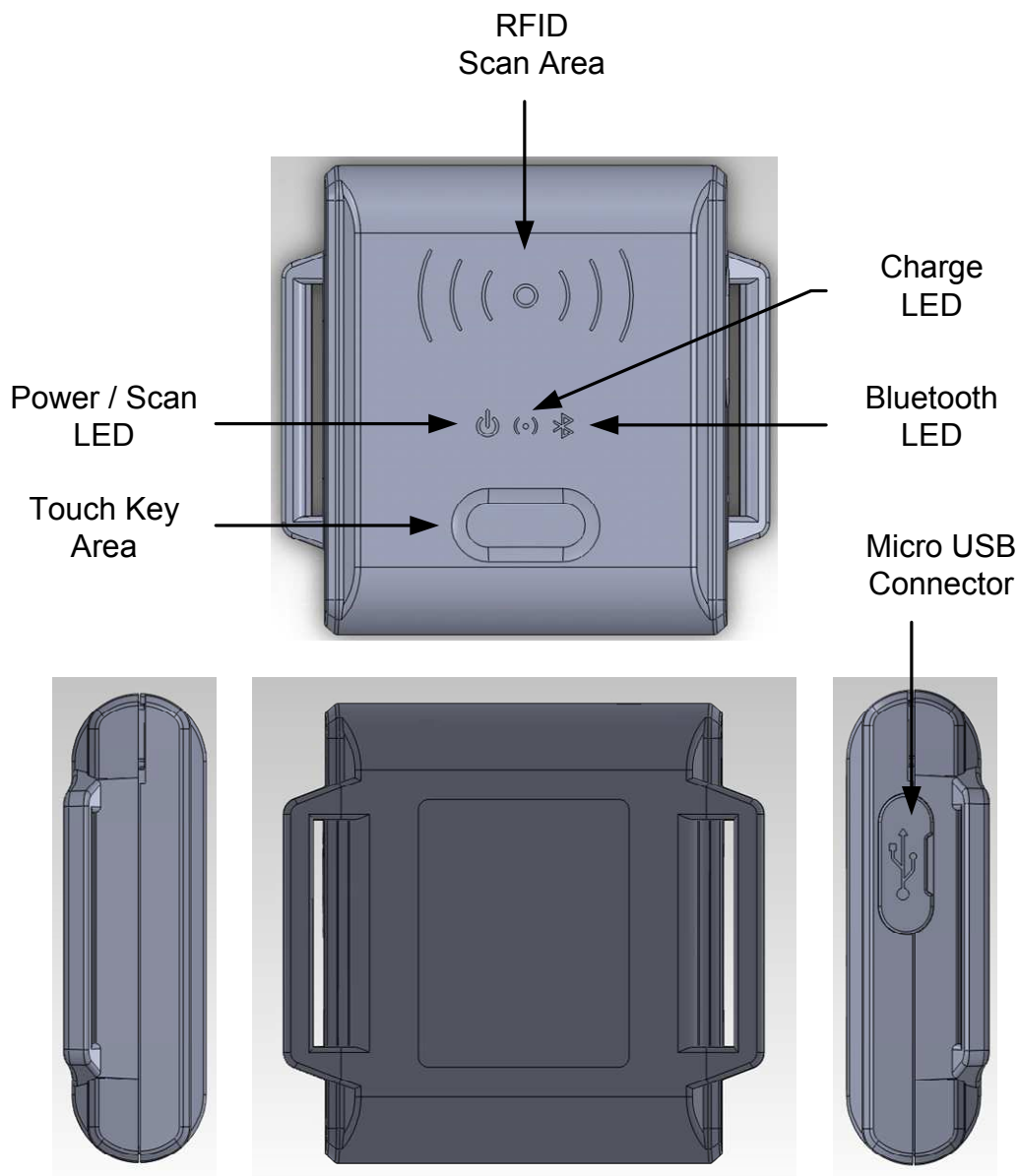
EFA800 Finger Antenna



## Specification

<b>Model no.</b>	<b>WBR800</b>	
<b>Operation</b>		
RFID	ISO 15693	
Frequency	13.56MHZ	
Output power	Maximum 5dBm	
Interfaces	Micro USB : USB HID Keyboard interface Bluetooth : Standard SPP , Compatible with Bluetooth specification version 3.0+ EDR	
Power supply for charge	5VDC from PC USB	
Battery	Rechargeable Lithium-ion Polymer Battery Nominal Capacity: 250 mAH ( Typical ) Nominal Voltage: 3.7 V Cycle Life: 300 cycles ( at least ) Low Battery Detect and Built-in Quick Charge Circuit	
Reading range	0~ 40 mm (depending on card)	
Dimension	Length: 45mm / Width: 38mm /High: 21mm (terminal included)	
<b>Physical characteristic</b>		
Weight	20 grams (terminal included)	
<b>Environment</b>		
Temperature	Operating temp: -0℃ ~ 50℃ Storage temp: -10℃ ~ 60℃ Charging temp : -0℃ ~ 45℃ Discharge temp : -0℃ ~ 60℃	
Humidity	Operating: 10% ~ 90% non-condensing Storage: up to 90% non-condensing	
<b>Safety approval</b>		
Approval	CE R&TTE EN 300 330 EN 301 489-1/-3 EN 60950-1	FCC ID PART 15B/C

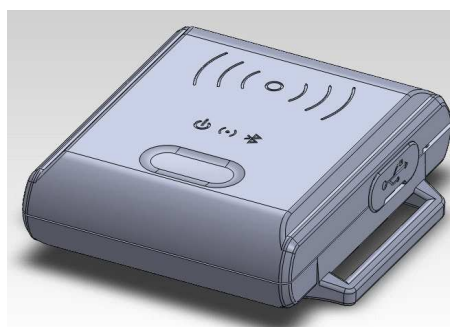
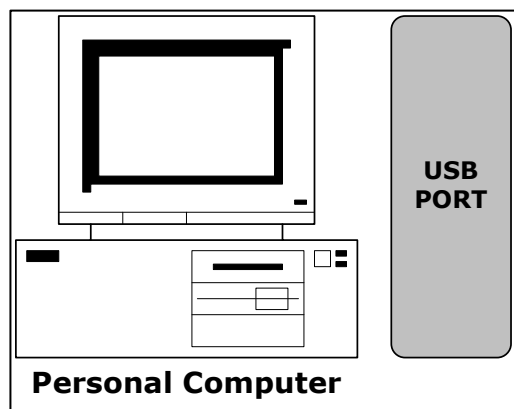
# Reader status





STATUS	GREEN 	RED 	YELLOW For Charge 	BLUE for BTM Link 	Buzzer	Touch Key
Power ON	Blink Twice	Blink Twice	OFF	OFF	Beep Twice	Touch 3 Seconds
Ready	ON	OFF	OFF	Continuous Blink**	OFF	
Low Battery	Continuous Blink	OFF	OFF	Continuous Blink**	OFF	
Battery Charge	ON	OFF	ON	Continuous Blink**	OFF	
Bluetooth link	ON	OFF	OFF	Continuous Blink***	OFF	
Scanning	ON	Blink 10 Seconds	OFF	Continuous Blink***	OFF	Touch Once
Scan OK	ON	Blink 10 Seconds*	OFF	Continuous Blink***	Beep Once	
Firmware Manager Mode	ON	ON	OFF	OFF	OFF	
Power OFF	Blink Twice	Blink Twice	OFF	OFF	Beep Twice	Touch 3 Seconds
*	Scanning times	A new calculation of 10 seconds scanning time after any successful reading within 10 seconds.				
**	Bluetooth Ready	Blue LED Continuous Blink Once				
***	Bluetooth Link OK	Blue LED Continuous Blink Twice				

## Connections for setting



### Note:

1. When WBR800 is connected/disconnected to USB port, it would be turned On/Off automatically.
2. Normally the charging time is about 1.5 ~ 2.5 hours (Default setting is low battery charge mode, it is detected when the battery is low, and will be charged until full automatically. The working hours would be more than 48 hours (Stand alone and Always On). When WBR800 is connected with USB cable, it will use power from PC instead.
3. The battery life is more than 300 times. If user uses improperly the charge mode, it may affect the battery life.

## **Operational Description**

### **1. Powered by Battery**

For normal use, the unit is powered by battery. Push the Power Switch Button for about 3 seconds to turn on the unit. Also push the Power Switch Button for about 3 seconds to turn off the unit. After the unit is turned on, the power would be turned off automatically if there is no scanning a card within 10 seconds. This means the unit would be turned off if no scanning a card again within every 10 seconds after every card scanning. It would have Low Battery Detect/Warning indication when the unit is powered by battery.

### **2. Powered by Cable**

When the unit is connected with the PC through the communication Cable (WAS-T0675-R) and the PC is running WBR800 software and open the USB for the unit, then the unit will be turned on in about 0.5 second by the PC through the USB PORT. Then you can do the unit Setting and Configuration. When the software closes the USB PORT or exits, the power is turned off from the PC immediately. When powered by cable from PC, the Power Switch would have no function and the unit would have no Low Battery Detect/Warning function.

### **3. Low Battery Detecting**

When powered by battery, it would have Low Battery Detecting function. When the battery goes low, the Power LED would flash green once every 1 second and you must charge battery immediately, otherwise, the unit would shut down any time without pre-warning.

### **4. Charge Mode**

Low battery charge mode is when the WBR800 is connected to USB or Power adapter, the battery hits low voltage and it starts to be charged automatically.

### **5. Charge Status Indication**

When WBR800 in the charge, Battery Status Indicating light turns to yellow, it means the battery is in charge status. When Battery Status Indicating light turns to off, it means the charge is finished.

### **6. Firmware Management mode (FMM)**

FMM allows you to quickly upgrade your WBR800's internal firmware via USB port and also to check validity of currently loaded firmware. Contact your dealer for most recent firmware upgrade files.

## Contact us

### Company address:

8F, No. 31, Lane 169  
Hsi-Chih Dist, New Taipei City  
Taiwan

### Telephone:

(02) 26954214

### Fax:

(02) 26954213

### Official web-site:

[www.gigatms.com.tw](http://www.gigatms.com.tw)

### emails:

Product information: - [promag@gigatms.com.tw](mailto:promag@gigatms.com.tw)

Technical support: - [support@gigatms.com.tw](mailto:support@gigatms.com.tw)