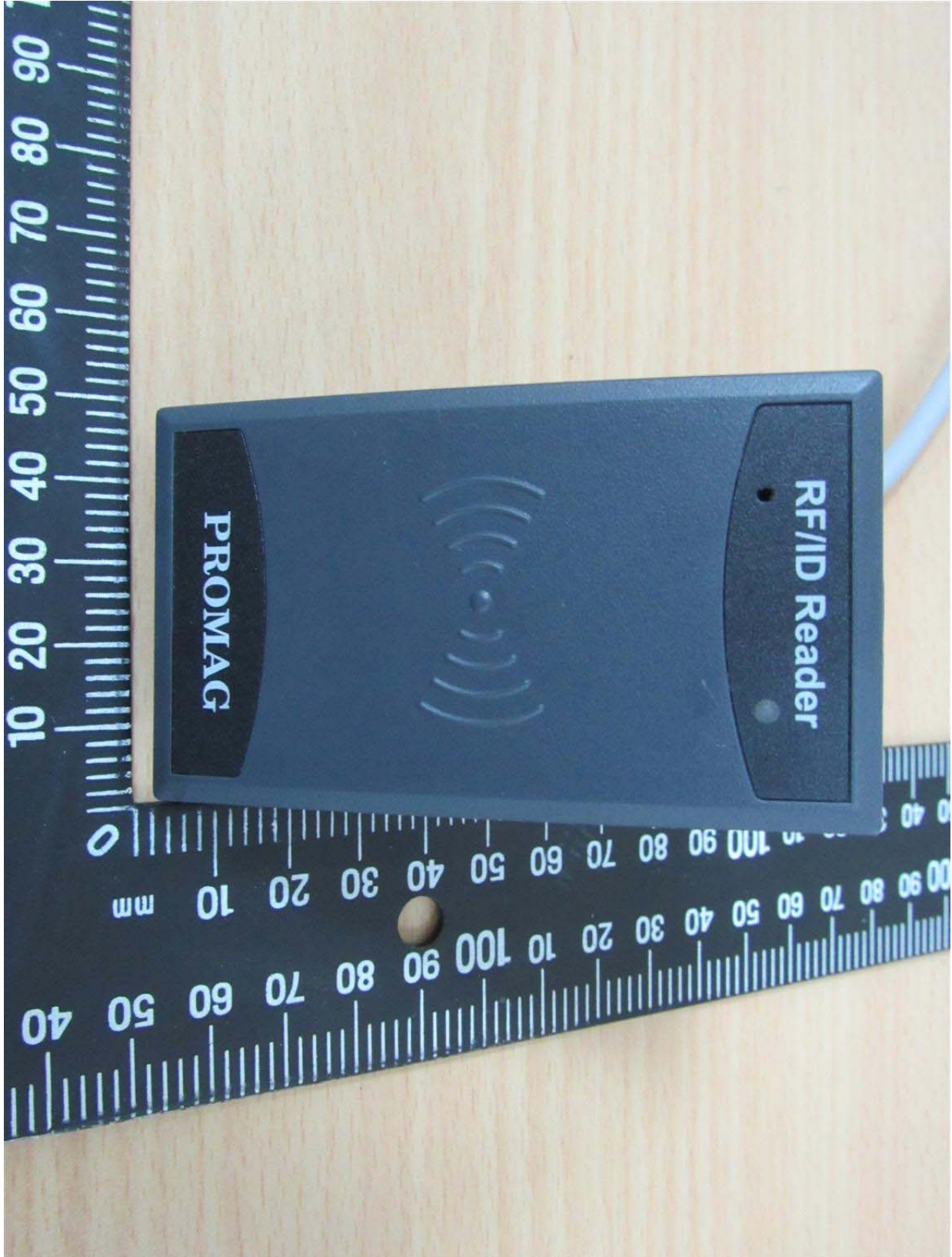


Registration number: W6M21604-15751-FCC
FCC ID: WXAMP300

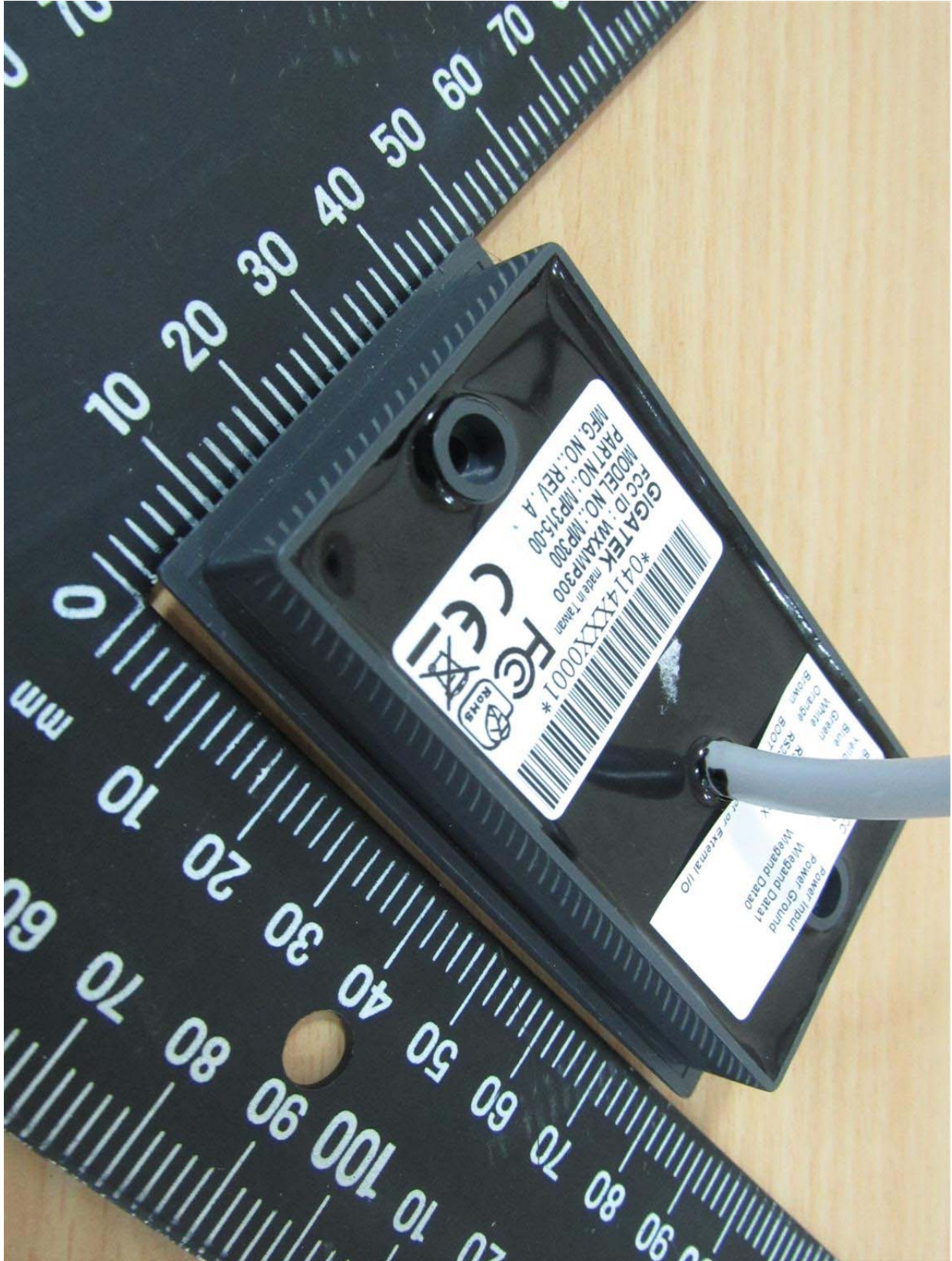
External Photos
Main model number





Worldwide Testing Services(Taiwan) Co., Ltd.

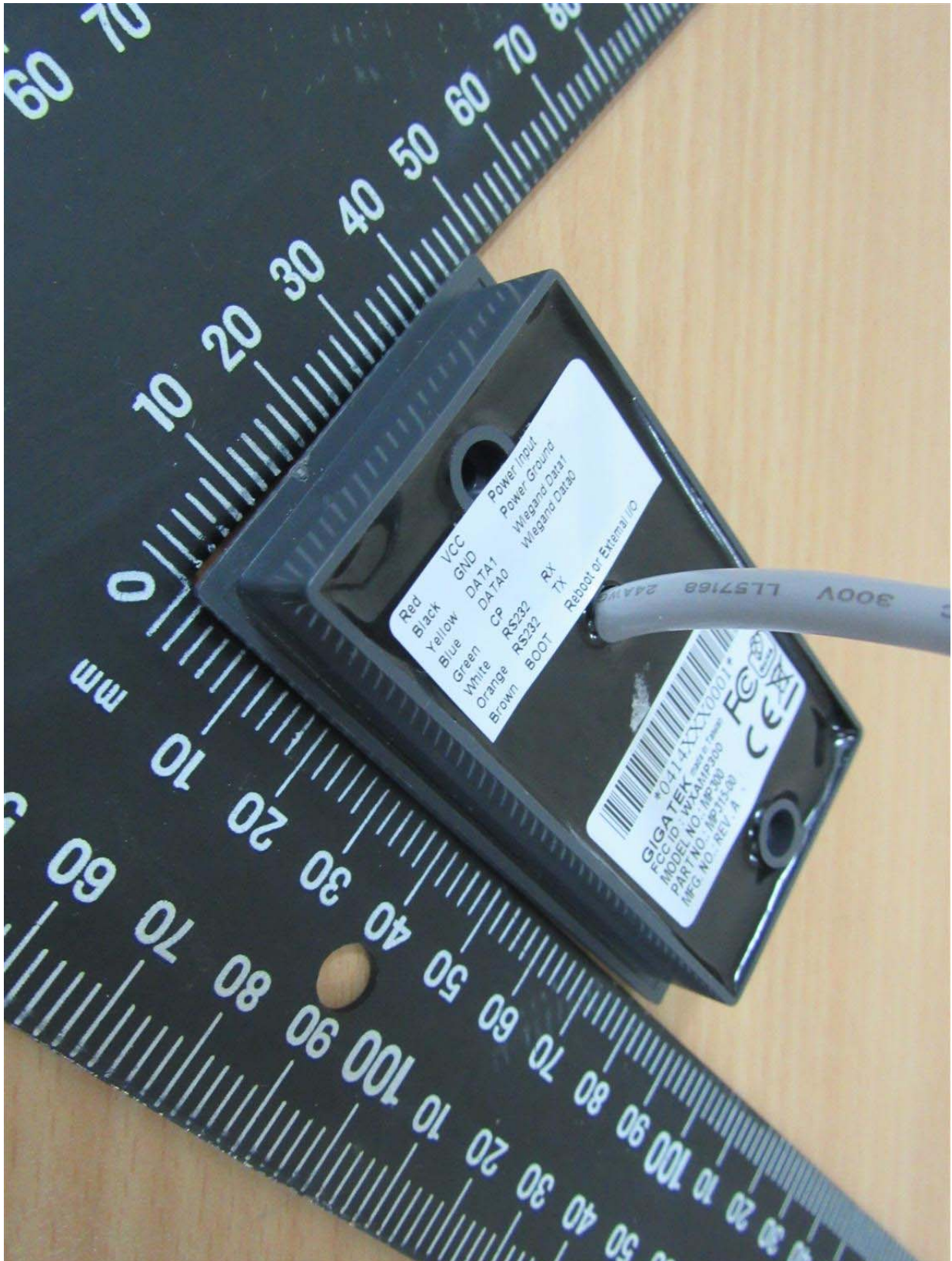
Registration number: W6M21604-15751-FCC
FCC ID: WXAMP300





Worldwide Testing Services(Taiwan) Co., Ltd.

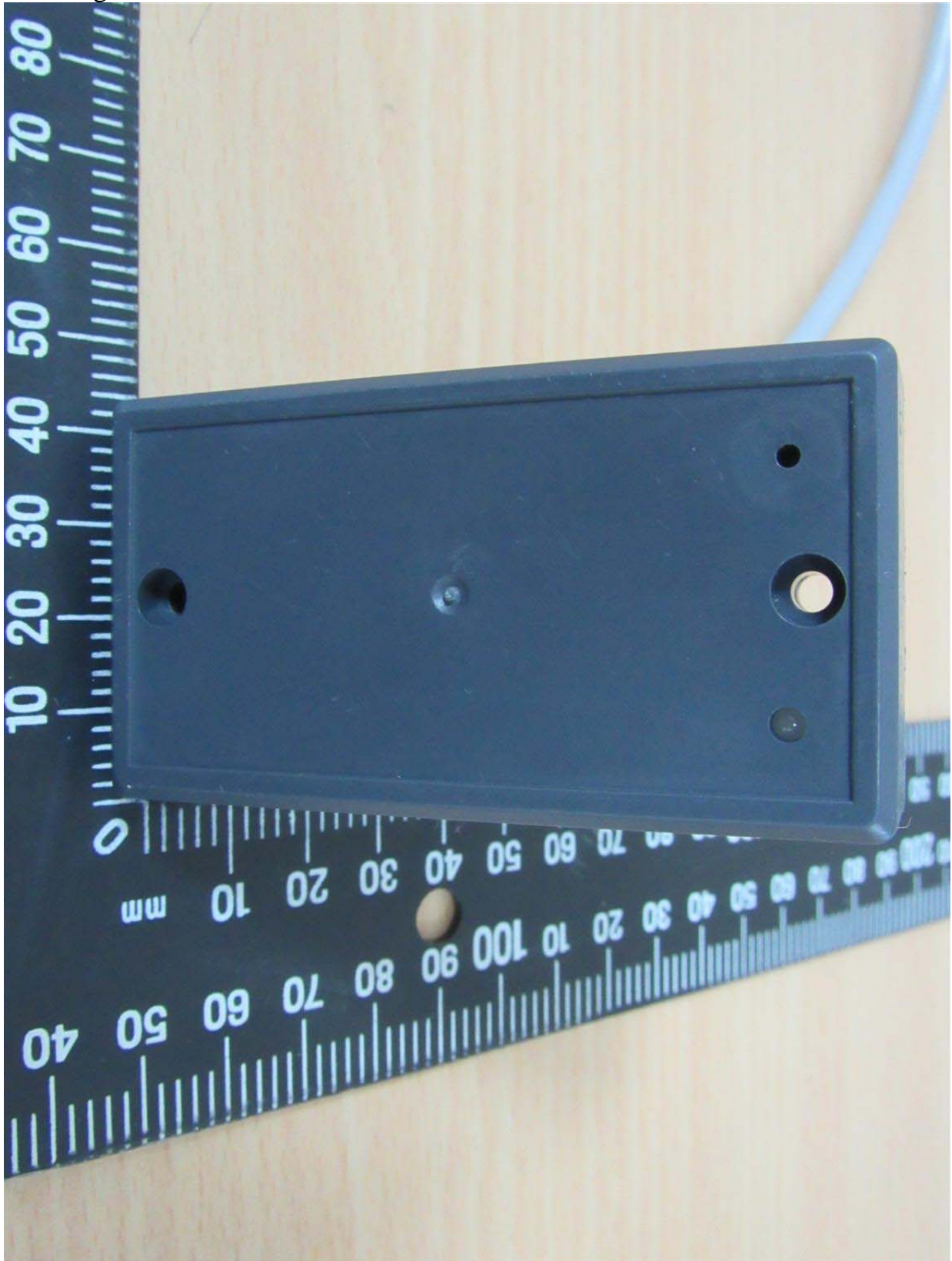
Registration number: W6M21604-15751-FCC
FCC ID: WXAMP300





Registration number: W6M21604-15751-FCC
FCC ID: WXAMP300

Multi-listing model number





Worldwide Testing Services(Taiwan) Co., Ltd.

Registration number: W6M21604-15751-FCC
FCC ID: WXAMP300





Worldwide Testing Services(Taiwan) Co., Ltd.

Registration number: W6M21604-15751-FCC
FCC ID: WXAMP300



Red	VCC	Power Input
Black	GND	Power Ground
Yellow	DATA1	Wiegand Data1
Blue	DATA0	Wiegand Data0
Green	CP	RX
White	RS232	TX
Orange	RS232	Reboot of External I/O
Brown	BOOT	

0414XX0001
GIGATEK
FCC ID: WXAMP300
MODEL NO.: MP300
PART NO.: MP300
MFG NO.: REV. A
FCC
CE
RoHS