

PROWARE®

User Guide

M-WN910N

Wireless N CardBus Adapter



2.4GHz Draft 11n/g/b

Rev: 1.0.0

COPYRIGHT & TRADEMARKS

Specifications are subject to change without notice. **PROWARE®** is a registered trademark of PROWARE TECHNOLOGIES CO., LTD. Other brands and product names are trademarks or registered trademarks of their respective holders.

No part of the specifications may be reproduced in any form or by any means or used to make any derivative such as translation, transformation, or adaptation without permission from PROWARE TECHNOLOGIES CO., LTD. Copyright © 2009 PROWARE TECHNOLOGIES CO., LTD. All rights reserved.

<http://www.proware.com.cn>

FCC STATEMENT



This equipment has been tested and found to comply with the limits for a Class B digital device, pursuant to part 15 of the FCC Rules. These limits are designed to provide reasonable protection against harmful interference in a residential installation. This equipment generates, uses and can radiate radio frequency energy and, if not installed and used in accordance with the instructions, may cause harmful interference to radio communications. However, there is no guarantee that interference will not occur in a particular installation. If this equipment does cause harmful interference to radio or television reception, which can be determined by turning the equipment off and on, the user is encouraged to try to correct the interference by one or more of the following measures:

- Reorient or relocate the receiving antenna.
- Increase the separation between the equipment and receiver.
- Connect the equipment into an outlet on a circuit different from that to which the receiver is connected.
- Consult the dealer or an experienced radio/ TV technician for help.

This device complies with part 15 of the FCC Rules. Operation is subject to the following two conditions:

- 1) This device may not cause harmful interference.
- 2) This device must accept any interference received, including interference that may cause undesired operation.

Any changes or modifications not expressly approved by the party responsible for compliance could void the user's authority to operate the equipment.

FCC RF Radiation Exposure Statement

This equipment complies with FCC RF radiation exposure limits set forth for an uncontrolled environment. This device and its antenna must not be co-located or operating in conjunction with any other antenna or transmitter.

"To comply with FCC RF exposure compliance requirements, this grant is applicable to only Mobile Configurations. The antennas used for this transmitter must be installed to provide a separation distance of at least 20 cm from all persons and must not be co-located or operating in conjunction with any other antenna or transmitter."

CE Mark Warning



This is a class B product. In a domestic environment, this product may cause radio interference, in which case the user may be required to take adequate measures.

National Restrictions

2400.0-2483.5 MHz

Country	Restriction	Reason/remark
Bulgaria		General authorization required for outdoor use and public service
France	Outdoor use limited to 10 mW e.i.r.p. within the band 2454-2483.5 MHz	Military Radiolocation use. Refarming of the 2.4 GHz band has been ongoing in recent years to allow current relaxed regulation. Full implementation planned 2012
Italy		If used outside of own premises, general authorization is required
Luxembourg	None	General authorization required for network and service supply(not for spectrum)
Norway	Implemented	This subsection does not apply for the geographical area within a radius of 20 km from the centre of Ny-Ålesund
Russian Federation		Only for indoor applications

Note: Please don't use the product outdoors in France.

CONTENTS

Package Contents	1
Chapter 1 Introduction	2
1.1 Overview of the Product	2
1.2 Features	2
1.3 LED Status	3
Chapter 2 Installation Guide	4
2.1 Hardware Installation	4
2.2 Software Installation	4
2.2.1 Overview	4
2.2.2 Software Installation for Windows XP	4
Chapter 3 Configuration	11
3.1 Current Status.....	11
3.2 Profile Management.....	13
3.2.1 Add or Modify a Configuration Profile.....	13
3.2.2 Remove a profile	18
3.2.3 Switch another Profile	18
3.2.4 Export a Profile.....	19
3.2.5 Import a Profile.....	19
3.2.6 Scan Available Networks	20
3.2.7 Auto Profile Selection Management	20
3.3 Diagnostics	21
3.3.1 Check Driver Information	22
3.3.2 Check Receive and Transmit Statistical Information	22
3.4 Configuration for Windows Vista.....	23
Chapter 4 WPS configuration	26
4.1 PBC (Push Button Configuration) method	26
4.2 PIN method.....	29
4.2.1 Enter a PIN into your AP device.....	29
4.2.2 Enter the PIN from your AP device	30
Appendix A: Specifications	32
Appendix B: Glossary	33

Package Contents

The following items should be found in your package:

- One M-WN910N Wireless N CardBus Adapter
- Quick Installation Guide
- One resource CD for M-WN910N, including:
 - Wireless N Client Utility (WCU) and Drivers
 - User Guide
 - Other Helpful Information

 **Note:**

Make sure that the package contains the above items. If any of the listed items are damaged or missing, please contact with your distributor.

Conventions:

The 'Adapter' mentioned in this User Guide stands for M-WN910N Wireless N CardBus Adapter without any explanations.

Chapter 1 Introduction

Thank you for choosing the **M-WN910N Wireless N CardBus Adapter!**

1.1 Overview of the Product

The adapter is a draft 802.11n client device; it is designed to provide a high-speed and unrivaled wireless performance for your notebook. With a faster wireless connection, you can get a better Internet experience, such as downloading, gaming, video streaming and so on.

With the 802.11n technology, higher throughput improvements using MIMO (multiple input, multiple output antennas), the M-WN910N's auto-sensing capability allows high packet transfer rate of up to 300Mbps for maximum throughput. It has good capability on anti-jamming, and it can also interoperate with other wireless (802.11b) products. The adapter supports WEP, WPA and WPA2 encryption to prevent outside intrusion and protect your personal information from being exposed.

The adapter is easy to install and manage. The Quick Setup Wizard guides you step-by-step through the installation process; the Wireless N Client Utility helps you create a wireless connection immediately.

With unmatched wireless performance, reception, and security protection, the M-WN910N is the best choice for easily adding or upgrading wireless connectivity to your notebook computer.

1.2 Features

- Complies with IEEE802.11n (draft), IEEE802.11g, IEEE802.11b standards
- Supports WPA/WPA2 data security, IEEE802.1x authentication, TKIP/AES encryption, 64/128/152-bit WEP encryption
- Supports high rate of up to 300Mbps for maximum throughput, supports automatically adjust to lower speeds due to distance or other operating limitations
- Provides 32-bit CardBus interface
- Supports Ad-Hoc and Infrastructure modes
- Good capability on anti-jamming
- Supports roaming between access points when configured in Infrastructure mode
- Ease to configure and provides monitoring information
- Supports Windows 2000, XP, Vista
- Built-in three internal antennas which are listed in a format of 2x3 for three receivers and two transmitters.

1.3 LED Status

LED Indications	Status	Working Status
Status Blue	Flashing Alternately	The adapter is trying to scan a networking connection.
Activity Blue	Flashing Alternately	
Status Blue	Intermittently	The adapter is already connected but is not transmitting or receiving data.
Activity Blue	Intermittently	
Status Blue	Flashing	The adapter is transmitting or receiving data.
Activity Blue	Flashing	

Chapter 2 Installation Guide

2.1 Hardware Installation

To install the adapter, follow these steps listed as below:

1. Locate an available CardBus slot on your laptop.
2. With the connector pin end facing the CardBus slot and the label facing up, slide the Adapter into the CardBus slot until it locks in place.

 **Note:**

Once the Adapter is firmly in place, the **Found New Hardware Wizard** screen will pop up.

2.2 Software Installation

2.2.1 Overview

The Adapter's Setup Wizard will guide you through the Installation procedure for Windows 2000, XP and Vista. The Setup Wizard will install the Wireless N Client Utility (WCU) and drivers.

When you install the hardware prior to before installing the software, the system will prompt "Found New Hardware Wizard", click **Cancel**, and run the Setup Wizard program on the CD-ROM.

The Setup steps for Windows 2000, XP and Vista are very similar. The following setup steps are for Windows XP.

2.2.2 Software Installation for Windows XP

1. Insert the Resource CD into your CD-ROM drive, and open the folder with the same name as your product. Then double-click Setup.exe in the proper folder according to your operating system to start the installation. After that, ~~Figure 2-1~~ **Figure 2-4** will appear. You can click **Cancel** to end the installation in the screen above.

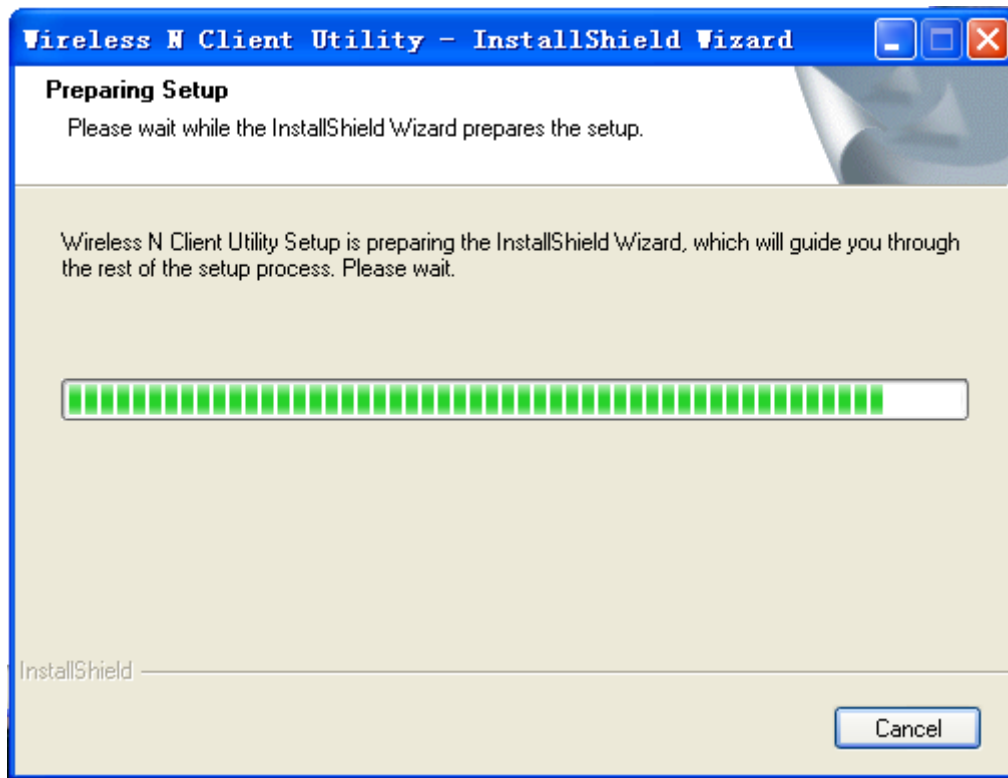


Figure 2-1

2. Soon, [Figure 2-2](#) will display after a moment. Click **Next** to continue.

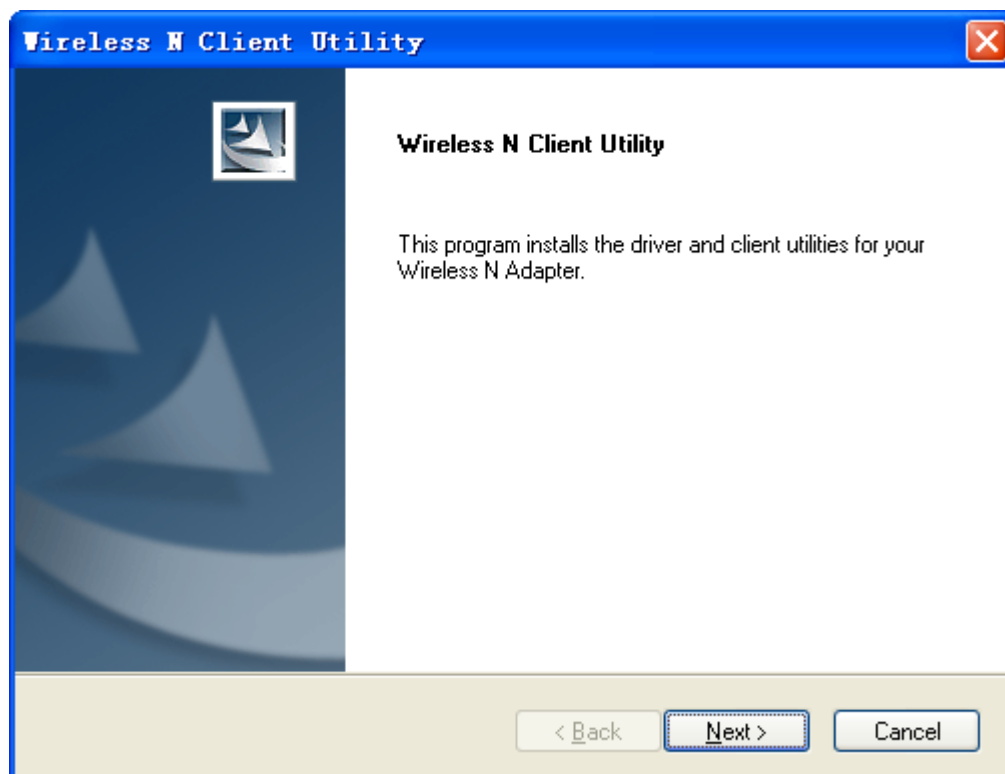


Figure 2-22

3. After that, you should choose a Setup type. It is recommended that you select **Install Client Utilities and Driver**. Select **Install Driver Only** to install driver only, select **Make Driver Installation Diskette(s)** to make the diskette(s) as the installation driver (shown in [Figure 2-3](#)). Click **Next** to continue.

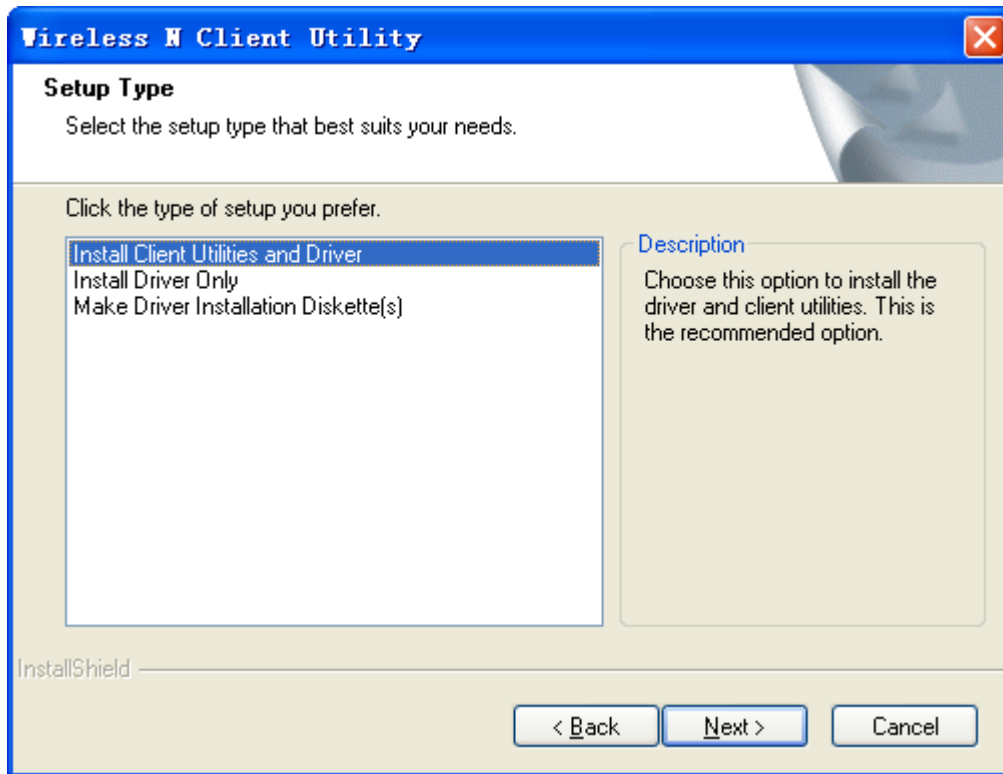


Figure 2-33

4. Click **Browse** to change the destination location for the software, then click **Next** in the screen below (shown in [Figure 2-4](#)[Figure 2-4](#)).

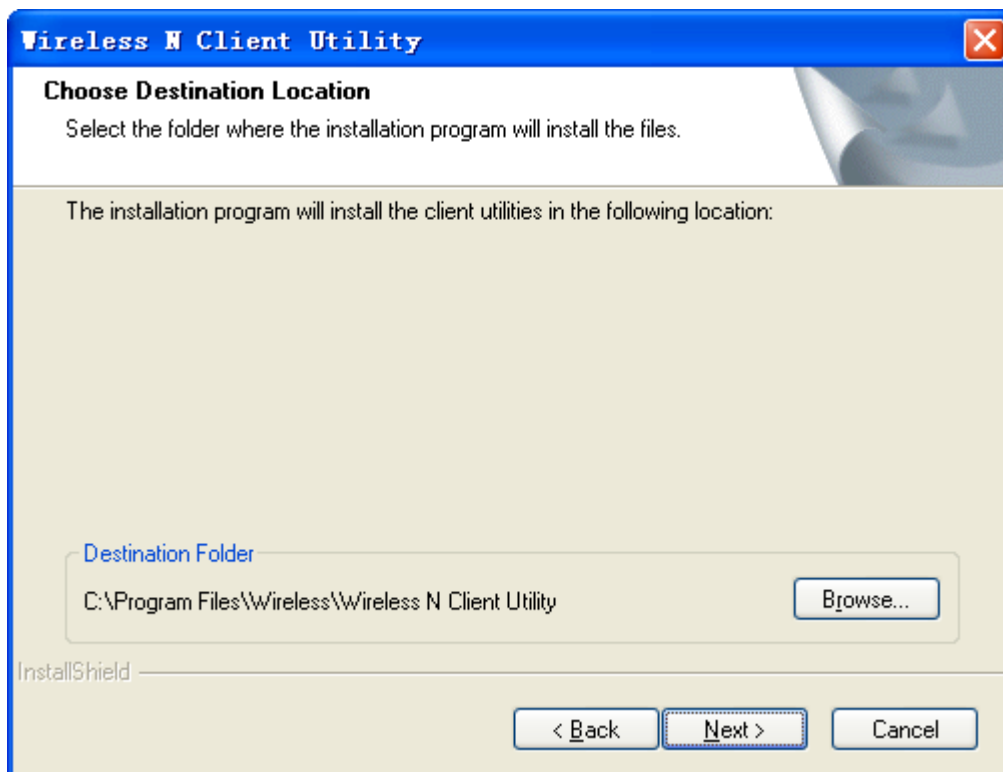


Figure 2-44

5. After that, select the program folder, you should create a new folder name or select one from the **Existing Folders** list. It is recommended that you keep the default setting. Click **Next** to continue the installation.

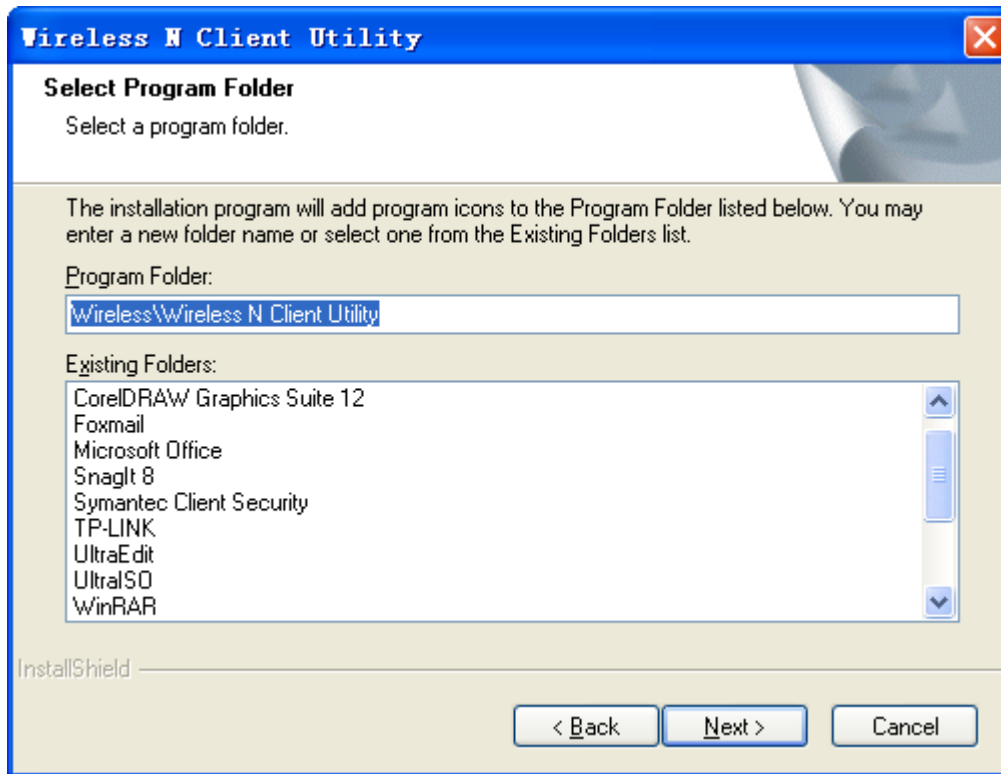


Figure 2-55

6. Choose configuration tool, if you are not sure, please leave it default. Then click **Next** to continue.

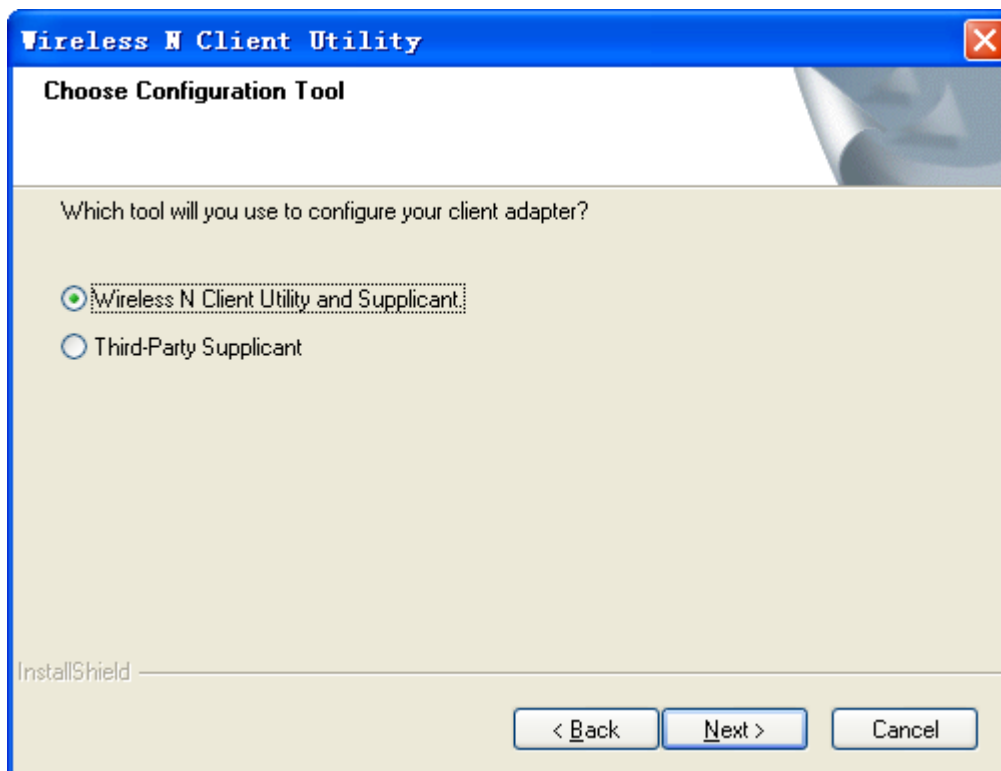


Figure 2-66

7. Click **Next** to continue the Installation on the screen below.



Figure 2-77

8. Wait a while for the setup as shown in [Figure 2-8](#)~~Figure 2-8~~.

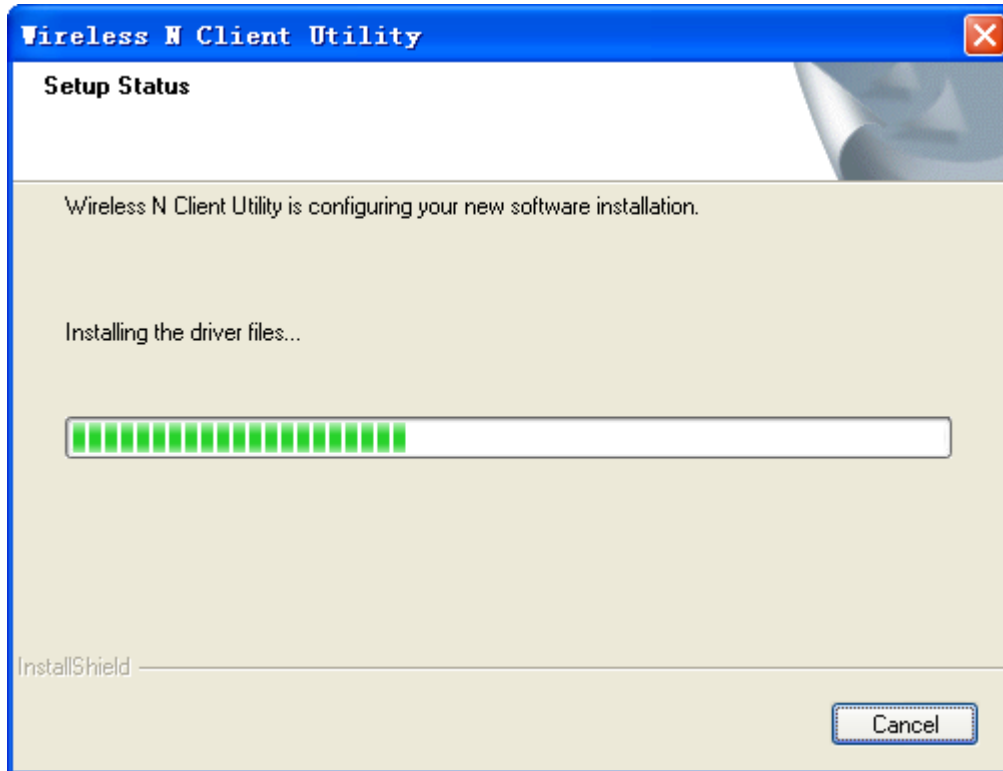


Figure 2-88

Note:

- 1) For Windows XP, the Setup Wizard will notify you of how to proceed with the installation during these steps (shown in [Figure 2-9](#)~~Figure 2-9~~). Our drivers have been tested thoroughly, and are able to work with the operating system. Click **Continue Anyway** to continue the Installation.



Figure 2-99

- 2) In Windows 2000, the warning screen is shown below ([Figure 2-10](#)~~Figure 2-10~~), and please select **Yes** to continue installation.



Figure 2-1040

9. After all the steps above, you will see the screen below, click **Finish** to complete the installation.

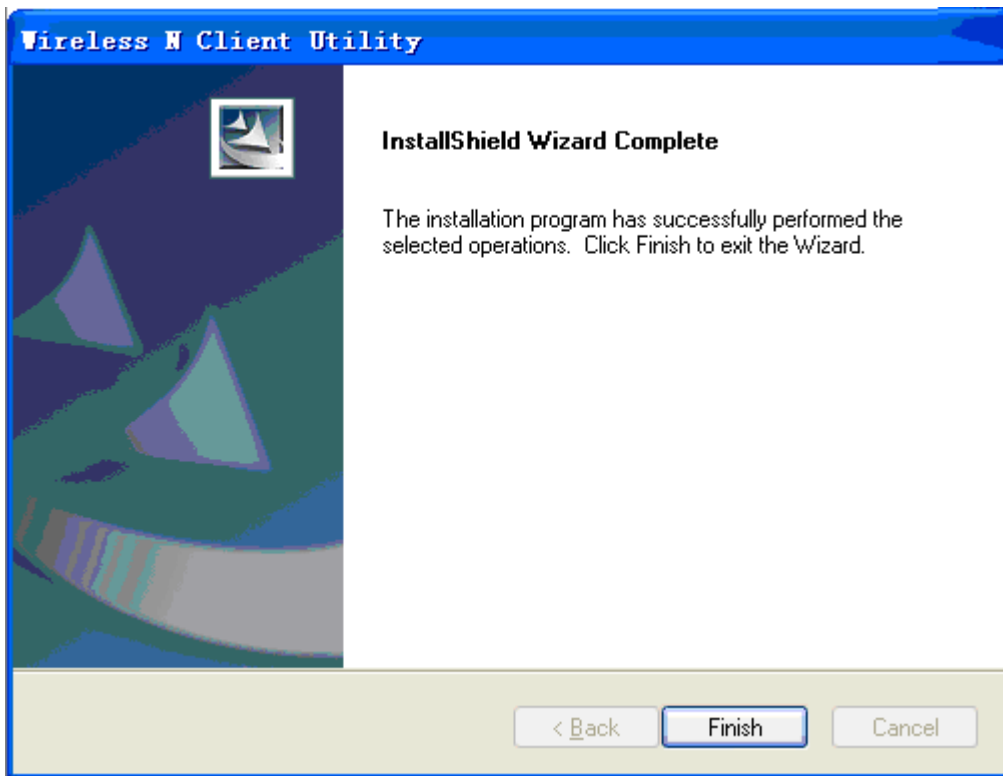



Figure 2-114

Chapter 3 Configuration

PROWARE M-WN910N can be configured by Wireless N Client Utility (WCU). This chapter describes how to configure your Adapter for wireless connectivity on your Wireless Local Area Network (WLAN) and use the data security encryption features.

After Installing the Adapter, the Adapter's tray icon  will appear in your system tray. It appears at the bottom of the screen, and shows the signal strength using color and the received signal strength indication (RSSI).



If the icon is gray, there is no connection.



If the icon is red, there is poor signal strength and the RSSI is less than 5dB.



If the icon is yellow, there is poor signal strength and the RSSI is between 5dB and 10dB.



If the icon is light green, there is good signal strength and the RSSI is between 10dB and 20dB.



If the icon is dark green, there is excellent signal strength and the RSSI is more than 20dB.

Double-click the icon and the **WCU** will run. You can also run the utility by clicking the **Start** → **Program** → **Wireless** → **Wireless N Client Utility** → **Wireless N Client Utility**. The WCU provides some integrated and easy tools to:

- Display current status information
- Edit and add configuration profiles
- Display current diagnostics information

The section below introduces these above capabilities.

3.1 Current Status

The Current Status tab contains general information about the program and its operations. The Current Status tab needn't any configurations.

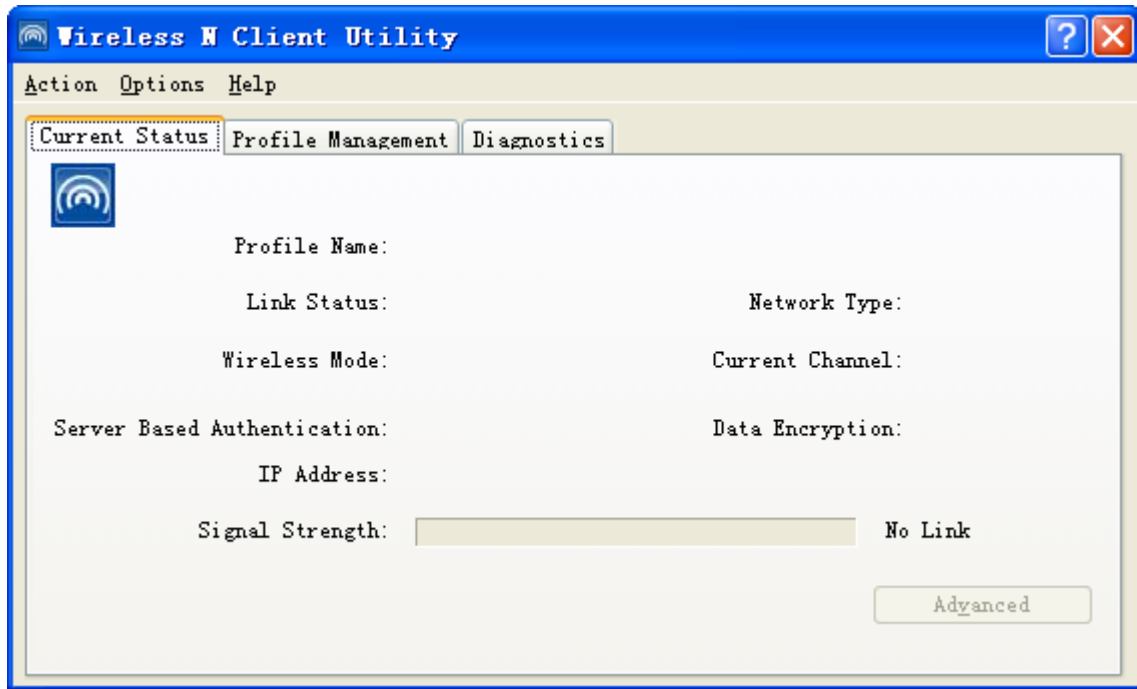


Figure 3-1

The following table describes the items found on the Current Status screen.

- **Profile Name** - This shows the name of current selected configuration profile. The configuration of Profile name will be described on the **General** tab of **Profile Management**.
- **Link Status** - This shows whether the station is associated to the wireless network.
- **Wireless Mode** - Here displays the wireless mode.
- **Network Type** - The type of network and the station currently connected are shown here. The options include:
 - Infrastructure (access point)
 - Ad Hoc

 **Note:**

You can configure the network type and wireless mode on the **Advanced** tab of **Profile Management**.

- **IP Address** - This displays the computer's IP address.
- **Control Channel** - This shows the currently connected channel.
- **Data Encryption** - Here displays the encryption type the driver is using. You can configure it on the **Security** tab of **Profile Management**.
- **Server Based Authentication** - This shows whether the server based authentication is used.
- **Signal Strength** - This shows the strength of the signal.

Click **Advanced** on the screen above, you can see advanced information about the program and its operations.

3.2 Profile Management

Click the Profile Management tab of the **WCU** and the next screen will appear (shown in [Figure 3-2](#)). The Profile Management screen provides tools to:

- Add a new profile
- Modify a profile
- Remove a profile
- Activate a Profile
- Import a Profile
- Export a Profile
- Scan Available Networks
- Order profiles

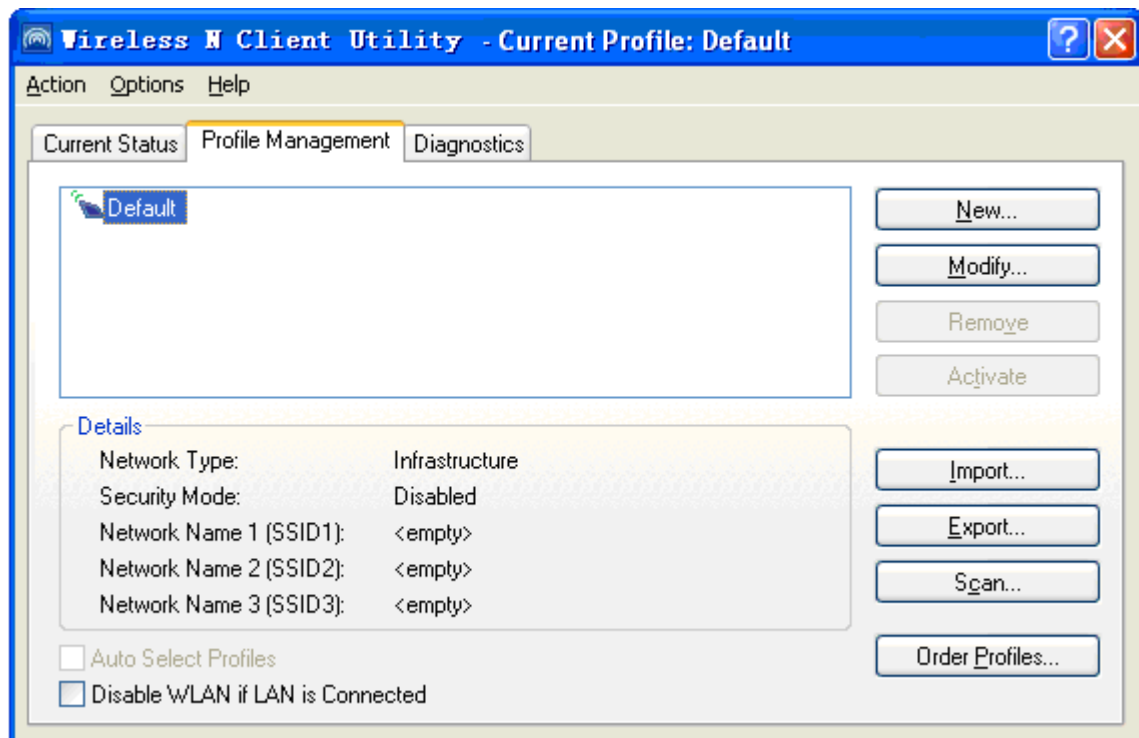


Figure 3-2

3.2.1 Add or Modify a Configuration Profile

To add a new configuration profile, click **New** on the Profile Management tab. To modify a configuration profile, select the configuration profile from the Profile list and click **Modify**. Then you will see the Management dialog box (shown in [Figure 3-3](#)).

1. Edit the General tab

- **Profile Name** - Please enter the Profile name which identifies the configuration profile. This name must be unique. Note that the profile names are not case-sensitive.
- **Client Name** - Please enter the Profile name which identifies the client machine.
- **Network Names (SSIDs)** - Please enter the IEEE 802.11 wireless network name. This field has a maximum limit of 32 characters.

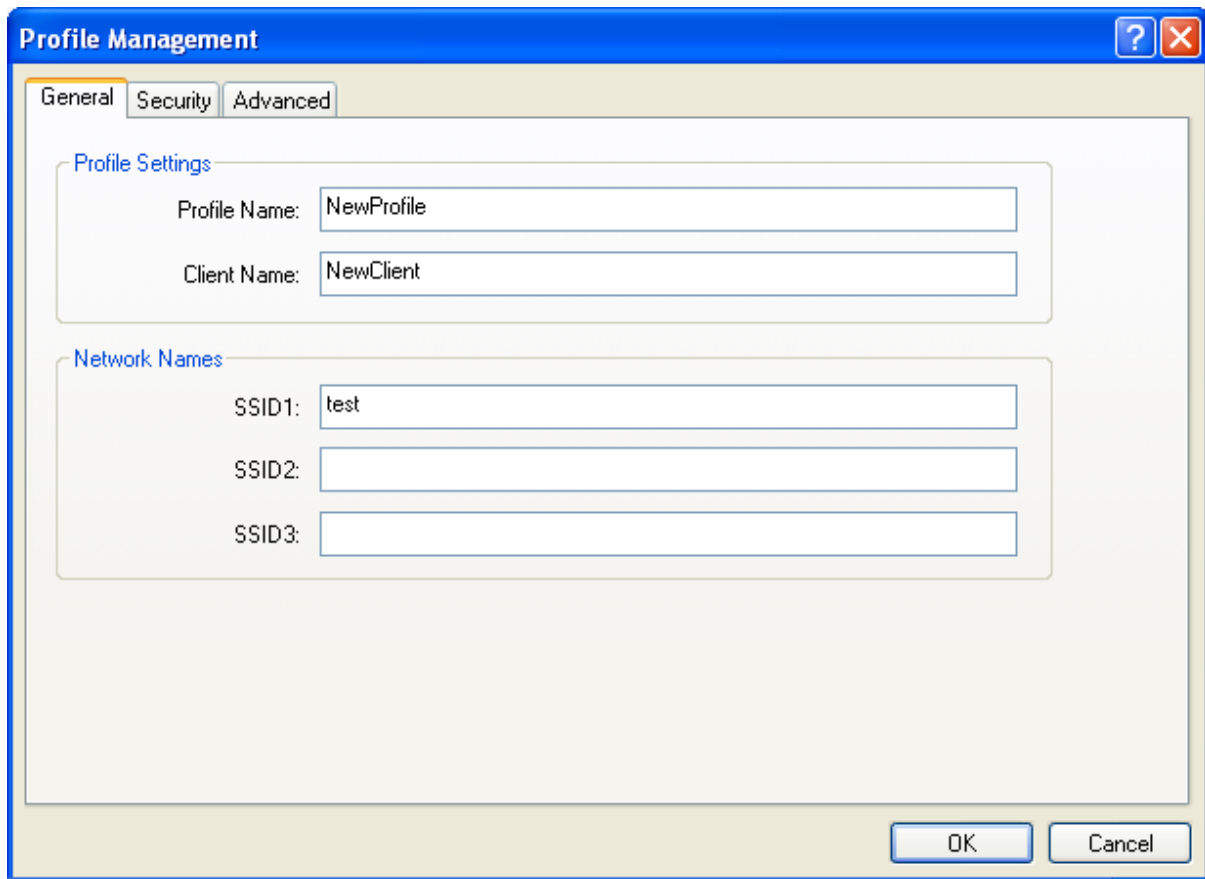


Figure 3-33

2. Edit the Security tab

Select the Security tab in the screen above, and then you can edit the fields to configure the profile. To define the security mode, select the radio button of the desired security mode as follows.

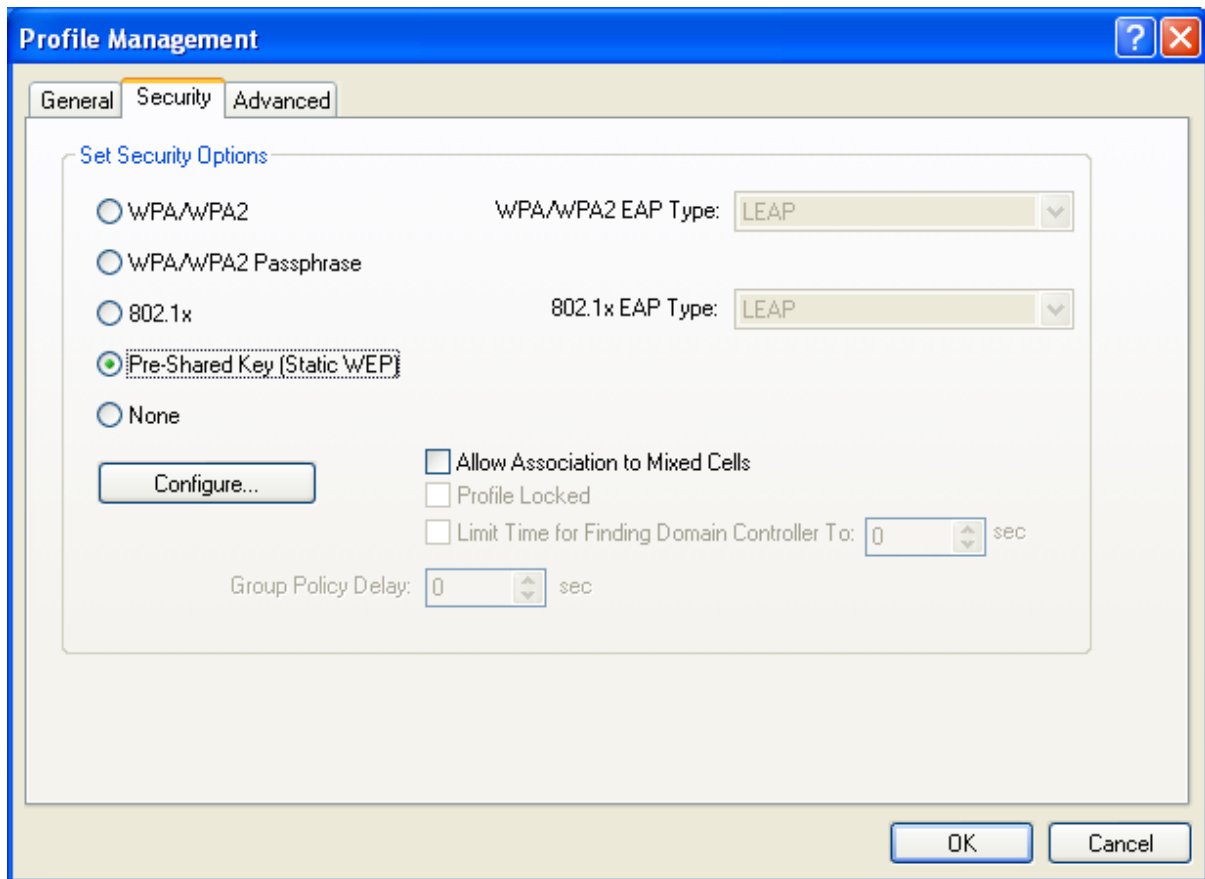


Figure 3-44

- **WPA/WPA2:** Wi-Fi Protected Access.
- **WPA/WPA2 Passphrase:** Wi-Fi Protected Access Passphrase.
- **802.1x:** Enables 802.1x security.
- **Pre-Shared Key (Static WEP):** Enables the use of shared keys that are defined on both the access point and the station. To define shared encryption keys, choose the Shared Key radio button and click **Configure** to fill in the Define Shared Keys window (shown in [Figure 3-5](#)).

Note:

The **WEP** security mode is not available for 802.11n.

- **None:** No security (not recommended).

Note:

If the access point which the Adapter is associated has WEP set and the client has WEP enabled, make sure that **Allow Association to Mixed Cells** is checked on the Security tab to allow association. To complete WEP encryption configuration, you must select the 802.11 Authentication Mode as appropriate on the **Advanced** tab of this **Profile Management** dialog.

To configure the Encryption Keys under the Pre-Shared keys (Static WEP) Security mode:

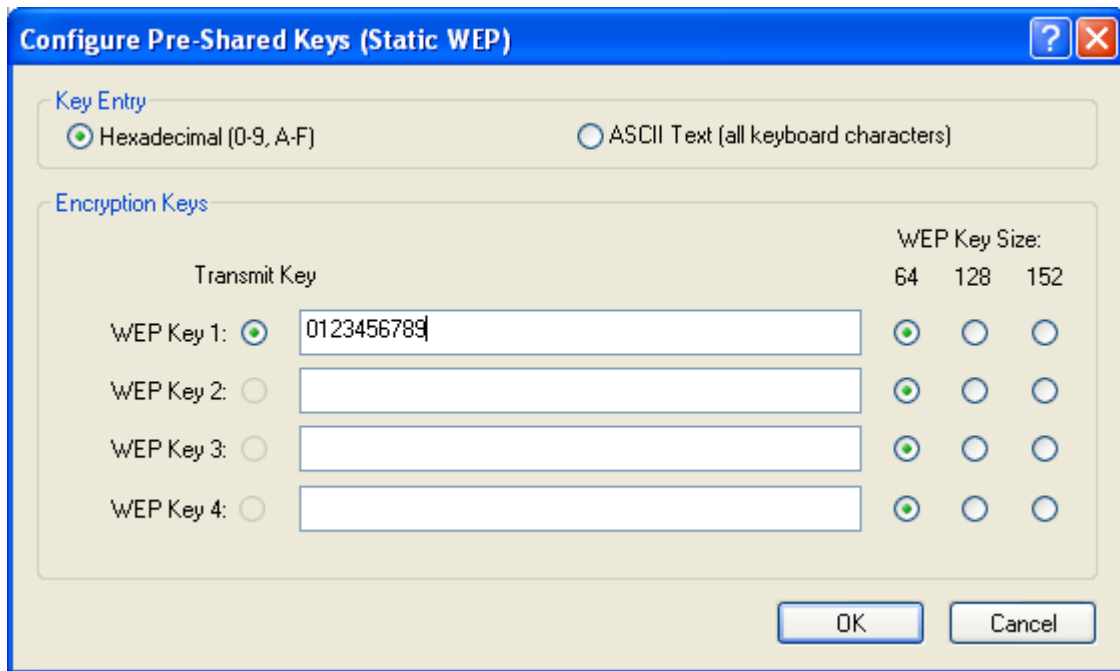


Figure 3-55

Note:

Select different **Security Options**, the configurations are different; you can select the appropriate security option and configure the exact key as your need.

3. Edit the Advanced tab

This screen below allows you to make advanced configuration for the profile.

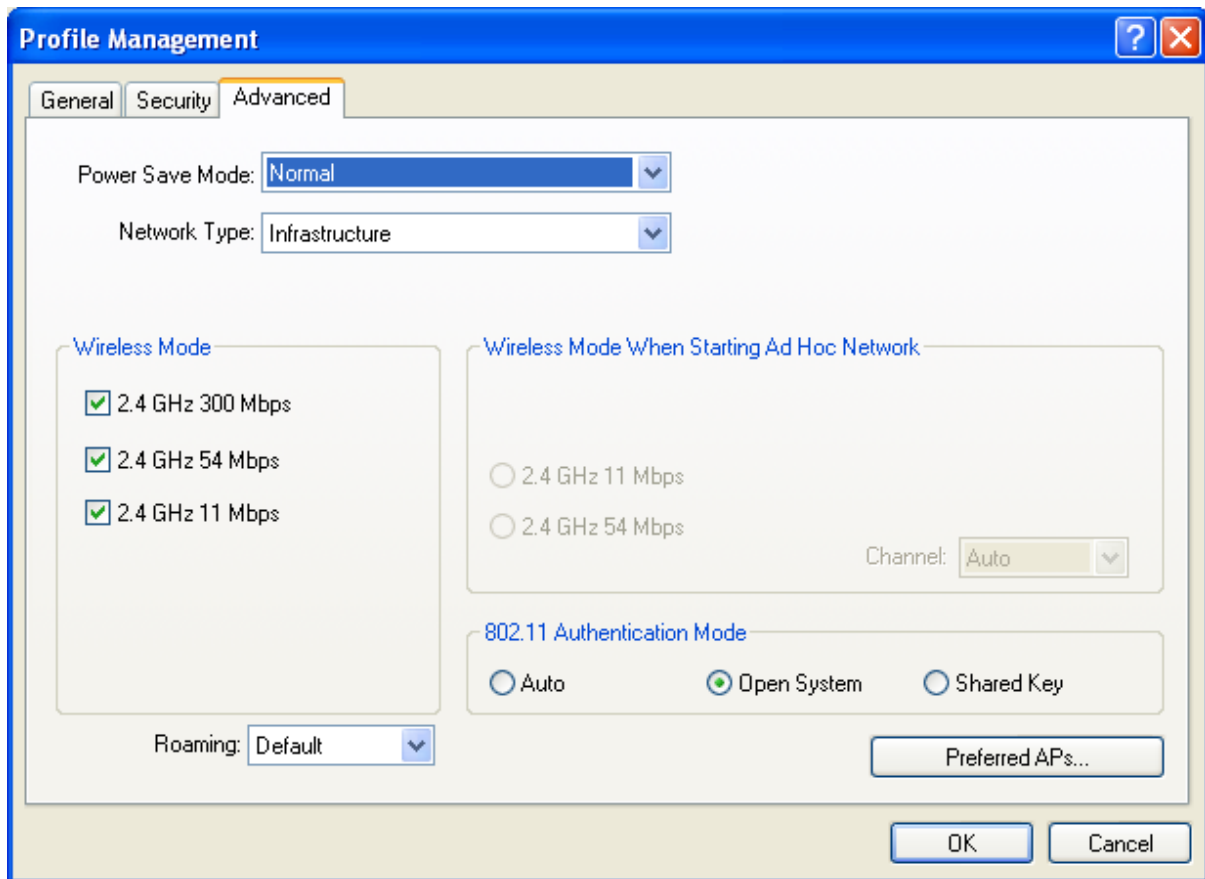


Figure 3-66

- **Power Save Mode** - Please select the power save mode in the drop-down list.
 - **Maximum** - Selects maximum mode to let the access point buffer incoming messages for the Adapter. The Adapter will detect the access point if any messages are waiting periodically.
 - **Normal** - Normal mode uses maximum when retrieving a large number of packets, then switches back to power save mode after retrieving the packets.
 - **Off** - Turns power saving off, thus powering up the Wireless CardBus Adapter continuously for a short message response time.
- **Network Type:** There are basically two modes of networking:
 - **Infrastructure** - All wireless clients will connect to an access point or wireless router.
 - **Ad-Hoc** - Directly connecting to another computer, for peer-to-peer communication, using wireless network adapters on each computer, such as two or more M-WN910N wireless adapters.

Note:

- 1) An Infrastructure network contains an Access Point or wireless router. All the wireless devices or clients will connect to the wireless router or access point.
 - 2) An Ad-Hoc network contains only clients, such as laptops with wireless desktop adapters. All the adapters must be in Ad-Hoc mode to communicate.
- **Wireless Mode:** Specifies 2.4 GHz 300 Mbps, 2.4 GHz 54 Mbps or 2.4 GHz 11 Mbps operation in an access point network. The Wireless adapter must match the wireless mode of the access point with which it associates.

- **Wireless Mode when Starting an Ad Hoc Network:** Specifies 2.4 GHz 300/54/11 Mbps to start an Ad Hoc network if no matching network name is found after scanning all available modes. This mode also allows the selection of the channel that the Wireless Adapter uses. The channels available depend on the regulatory domain. If the adapter finds no other ad hoc adapters, the channel that the adapter starts the ad hoc network with will be selected automatically. The Adapter must match the wireless mode and channel of the clients it associates.
- **802.11 Authentication Mode:** Select which mode the Adapter uses to authenticate to an access point:
 - **Automatic** causes the adapter to attempt authentication using shared, but switches it to open authentication if shared fails.
 - **Open System** enables an adapter to attempt authentication regardless of its WEP settings. It will only associate with the access point if the WEP keys on both the adapter and the access point match.
 - **Shared-key** only allows the adapter to associate with access points that have the same WEP key.

For infrastructure (access point) networks, click **Preferred APs...** to specify four access points at most to the client adapter that attempts to be associated to the access points. The four access points have different priorities; the frontal has the higher priority.

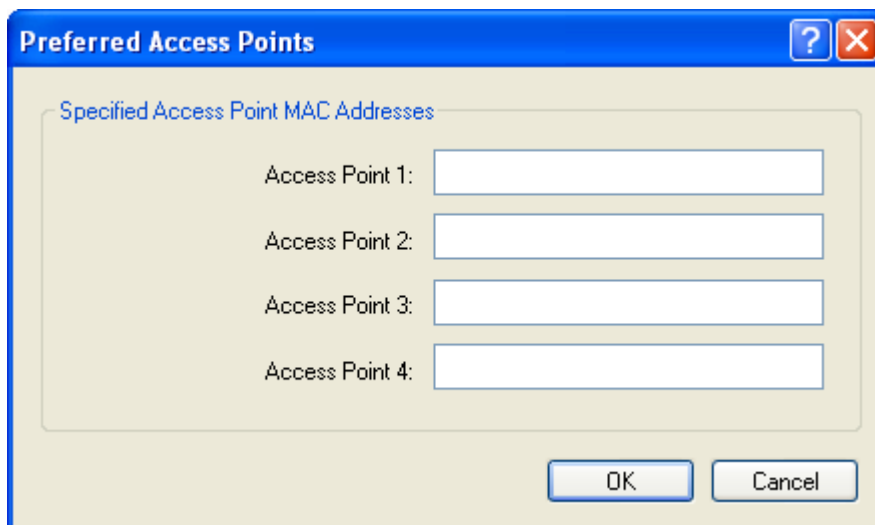


Figure 3-77

3.2.2 Remove a profile

1. Go to the Profile Management tab (shown in [Figure 3-2](#)~~Figure 3-2~~).
2. Select the profile name in the Profiles List.
3. Click **Remove**.

Note:

The profile being used can't be removed.

3.2.3 Switch another Profile

1. Go to the Profile Management screen (shown in [Figure 3-2](#)~~Figure 3-2~~).

2. Select the profile name required in the Profiles List.
3. Click **Activate**.

3.2.4 Export a Profile

1. From the Profile Management screen (shown in [Figure 3-2](#)~~Figure 3-2~~), highlight the profile to export.
2. Click **Export...**, the Export Profile window will then appear below.
3. Browse the directory to export the profile to.
4. Click **Save**. The profile should then be exported to the specified location.

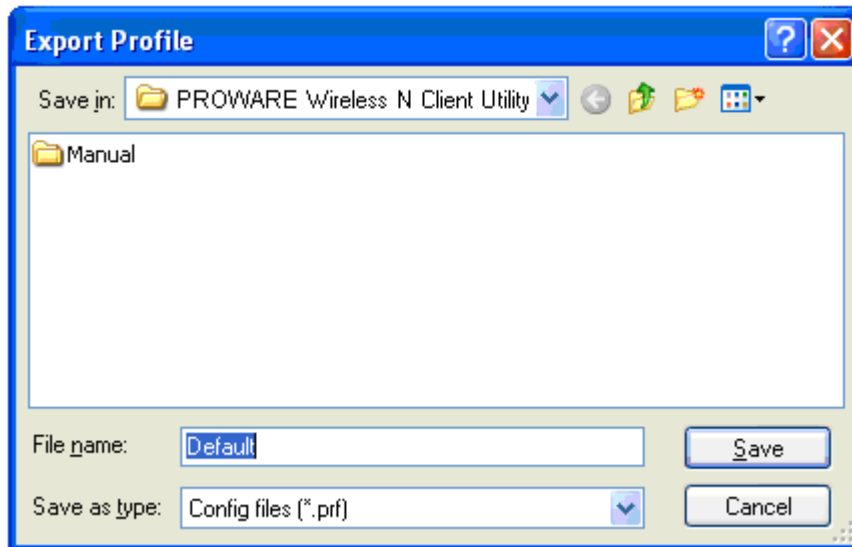


Figure 3-~~88~~

3.2.5 Import a Profile

1. From the Profile Management screen (shown in [Figure 3-2](#)~~Figure 3-2~~), click **Import...**. Then the Import Profile will appear below.
2. Browse to the directory where the profile is located.
3. Highlight the profile name.
4. Click **Open**, the imported profile will then appear in the Profiles List.

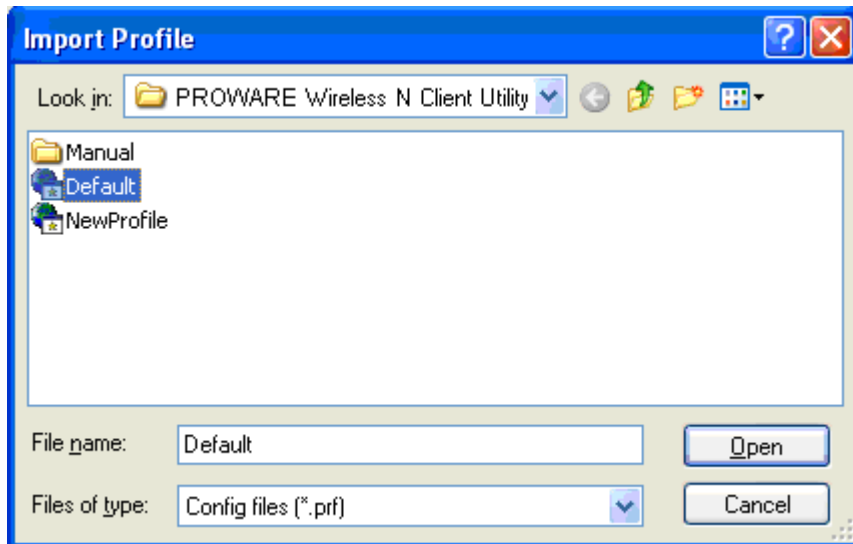


Figure 3-99

3.2.6 Scan Available Networks

1. Click **Scan** on the Profile Management screen (shown in [Figure 3-2](#)), the Available Infrastructure and Ad Hoc Networks window will appear below.
2. Click **Refresh** to refresh the list at any time.
3. Highlight a network name and click **Activate** to connect to an available network. If no configuration profile exists for that network, the Profile Management window will open the **General** tab screen. Fill in the Profile name and click **OK** to create the configuration profile for that network.

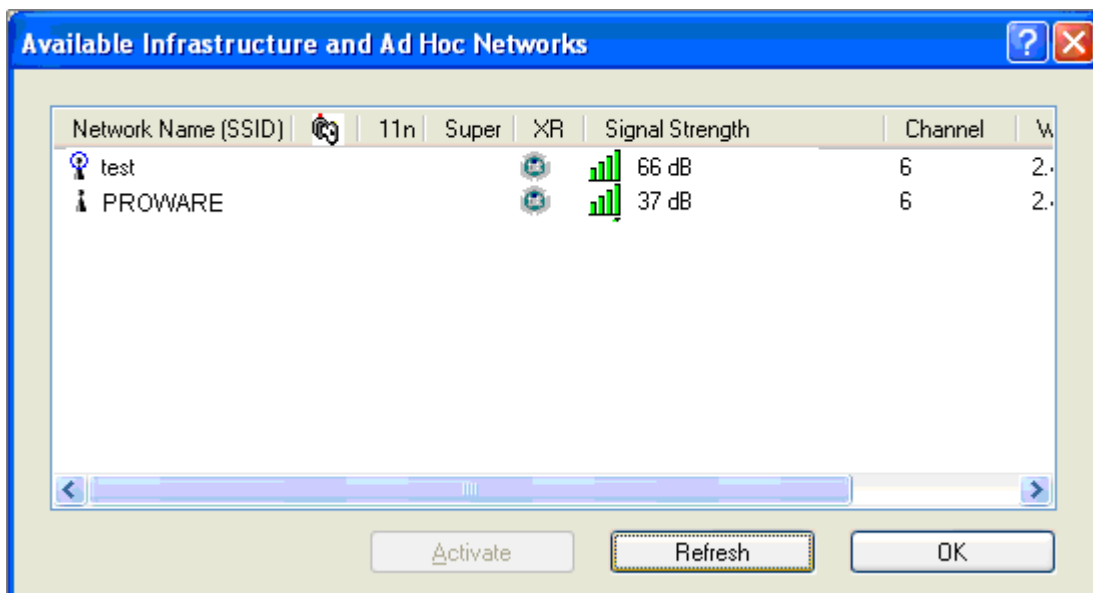
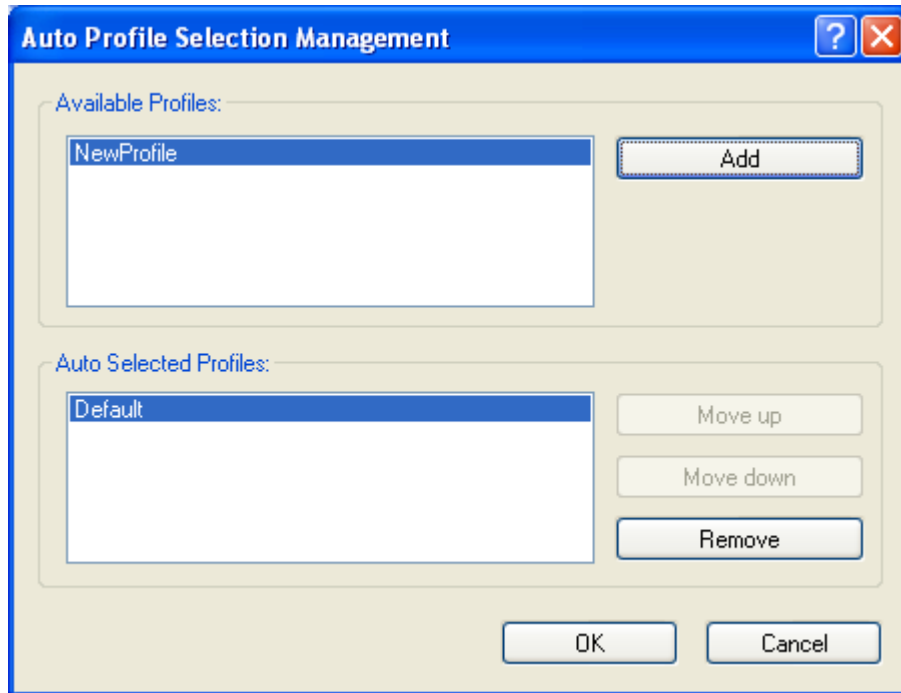


Figure 3-104

3.2.7 Auto Profile Selection Management

The auto selection feature allows the adapter to automatically select a profile from the list of profiles and use it to connect to the network. To add a new profile into the Auto Selected Profiles list, please follow these steps.

1. On the Profile Management screen (shown in [Figure 3-2](#)~~Figure 3-2~~), click **Order Profiles....**
2. The Auto Profiles Selection management window will appear (shown in [Figure 3-11](#)~~Figure 3-11~~[Figure 3-14](#)) with a list of all created profiles in the Available Profiles.

Figure 3-~~11~~[14](#)

3. Highlight the profiles to add to auto profile selection, and click **Add**. The profile will appear in the Auto Selected Profiles box.
4. Highlight a profile in the Auto Selected Profiles box.
5. Click **Move Up** or **Move Down** as appropriate.

 **Note:**

The first profile in the Auto Selected Profiles box has highest priority, while the last profile has the lowest priority.

6. Click **OK**.
7. Check the **Auto Select Profiles** checkbox on the **Profile Management** tab (shown in [Figure 3-2](#)~~Figure 3-2~~).

 **Note:**

When auto profile selection is enabled by checking **Auto Select Profiles** on the **Profile Management** tab, the client adapter will scan for an available network. The profile with the highest priority and the same SSID as one of the found networks will be used to connect to the network. If the connection fails, the client adapter will try the next highest priority profile that matches the SSID until an available network is found.

3.3 Diagnostics

The **Diagnostics** tab of the Wireless N Client Utility (WCU) provides buttons used to retrieve receiving and transmitting statistics. The Diagnostics tab does not require any configuration.

The Diagnostics tab lists the following receiving and transmitting diagnostics for frames received or transmitted by the wireless network adapter:

- Multicast frames transmitted and received
- Broadcast frames transmitted and received
- Unicast frames transmitted and received
- Total bytes transmitted and received

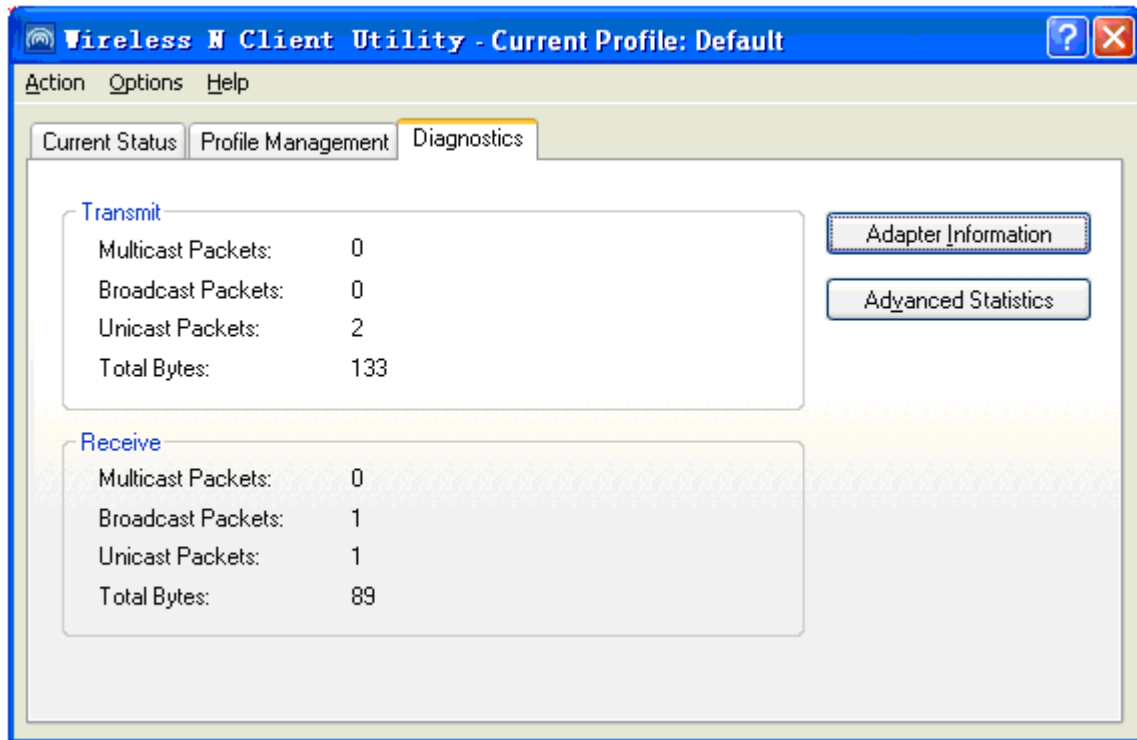


Figure 3-1242

3.3.1 Check Driver Information

Click the **Adapter Information** button in the screen above, you will see the adapter information, including general information about the wireless network adapter and the Network Driver Interface Specification (NDIS) driver. Access the adapter information from the Diagnostics tab.

- **Card Name** - The name of the wireless network adapter.
- **MAC Address** - The MAC address of the wireless network adapter.
- **Driver** - The driver name and path of the wireless network adapter driver.
- **Driver Version** - The version of the wireless network adapter driver.
- **Driver Date** - The creation date of the wireless network adapter driver.
- **Client Name** - The name of the client computer.

3.3.2 Check Receive and Transmit Statistical Information

The **Advanced Statistics** show receiving and transmitting statistical information about the following receiving and transmitting diagnostics for frames received by or transmitted to the wireless network adapter.

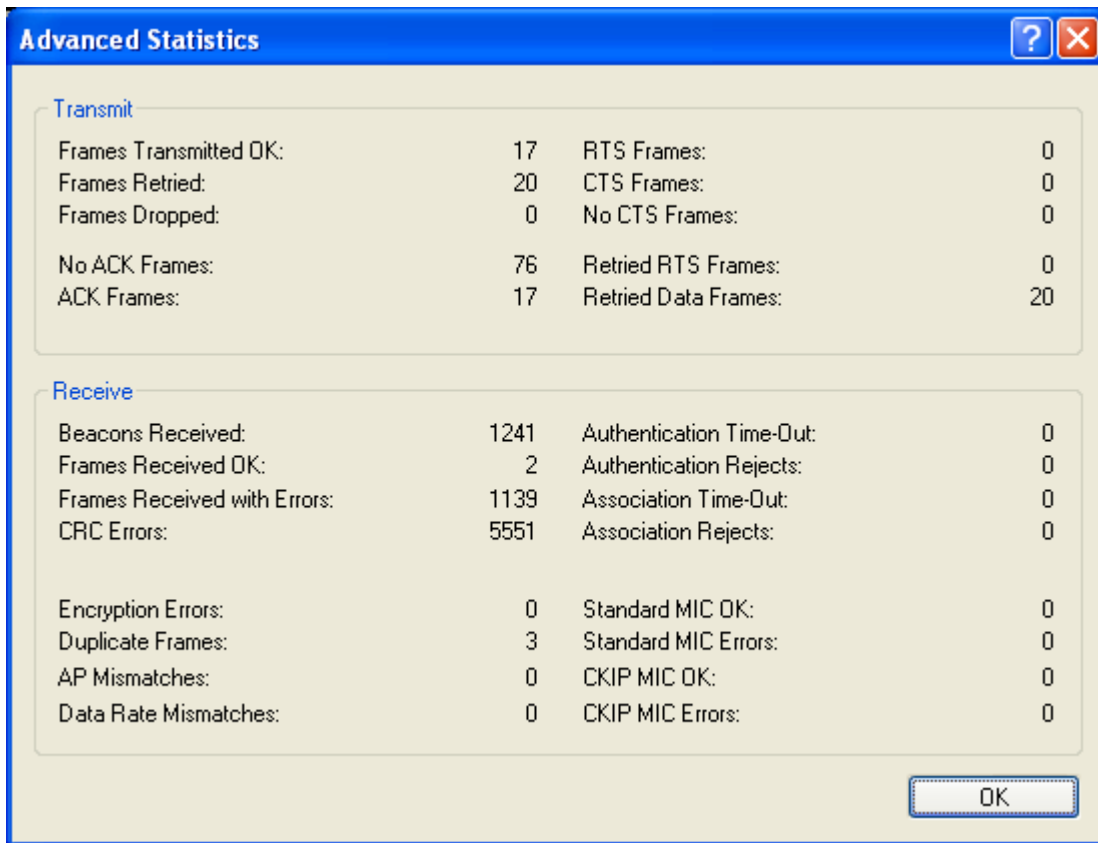


Figure 3-1343

3.4 Configuration for Windows Vista

After the Adapter's driver has been installed, Windows Vista will display a wireless Network Connection message like this one.

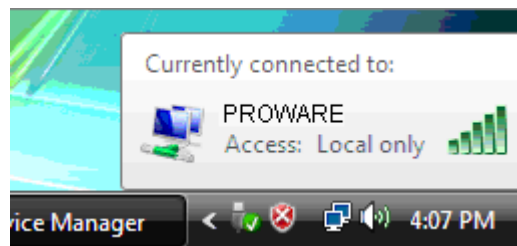
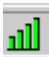



Figure 3-1444

Icon  means the connection has been established. Icon  means there is no connection.

To establish a connection, please follow the steps below.

1. Right-click the icon  in your system tray, then click **Connect to a network**.

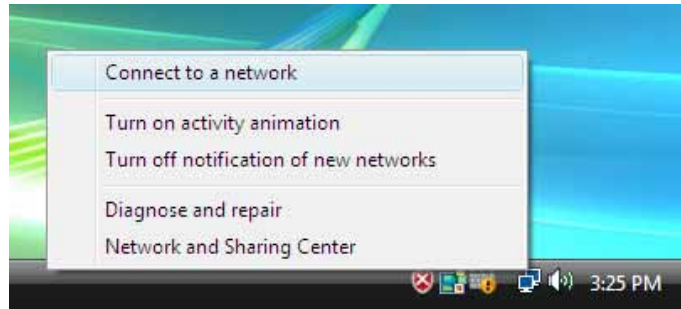


Figure 3-1545

2. The following screen will show you available wireless networks. Highlight the one you want to join, and then click **Connect**.

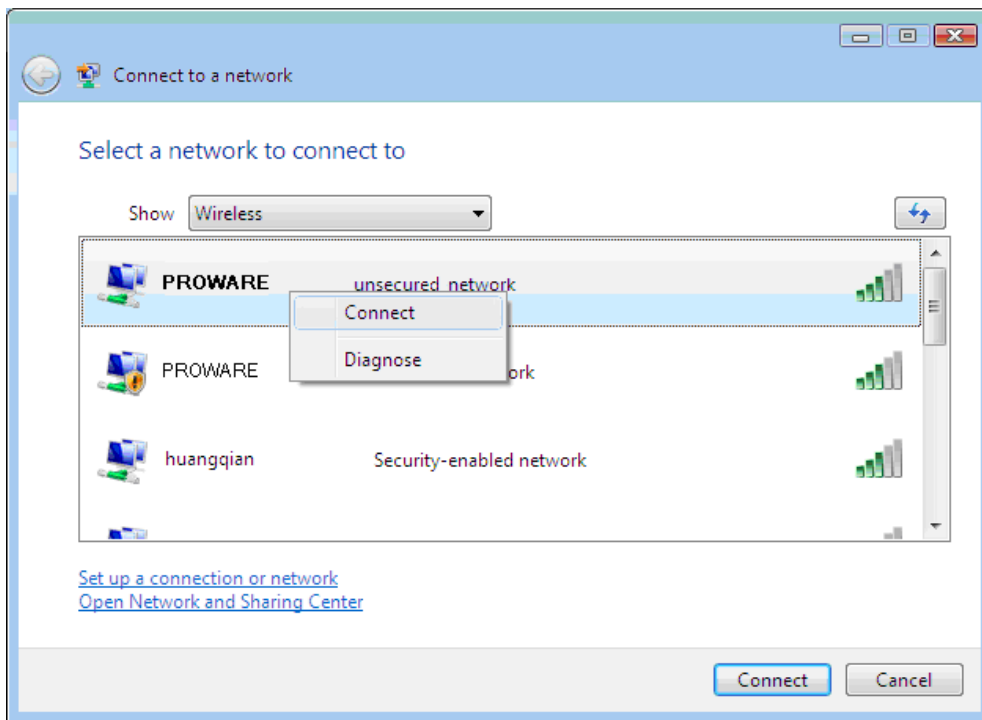


Figure 3-1646

3. To continue, click **Connect Anyway**. Click the **Cancel** button to end the connection.

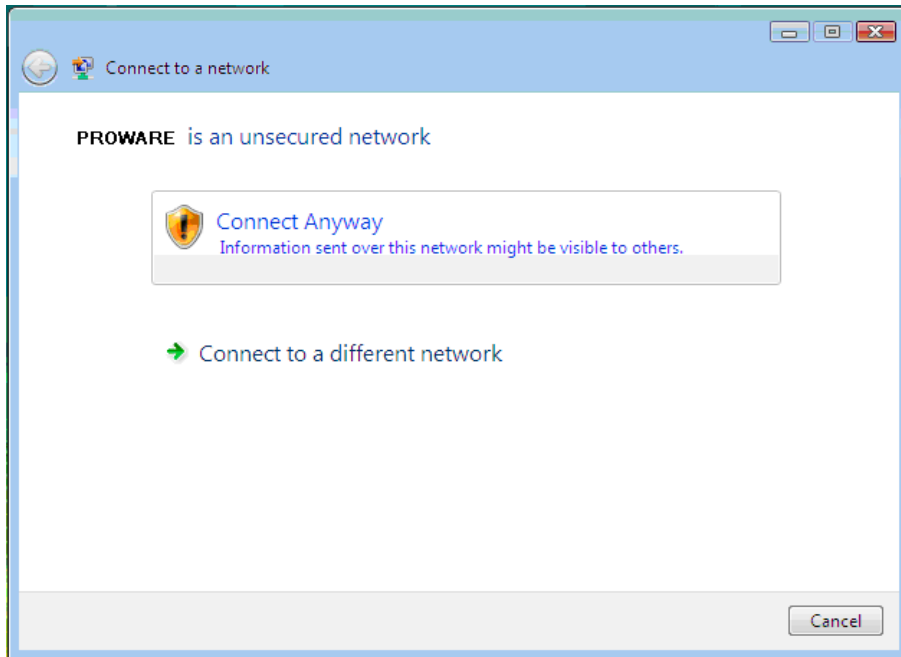


Figure 3-1747

4. If the connection is successful established, the following screen will appear, click **close** to finish the connection.

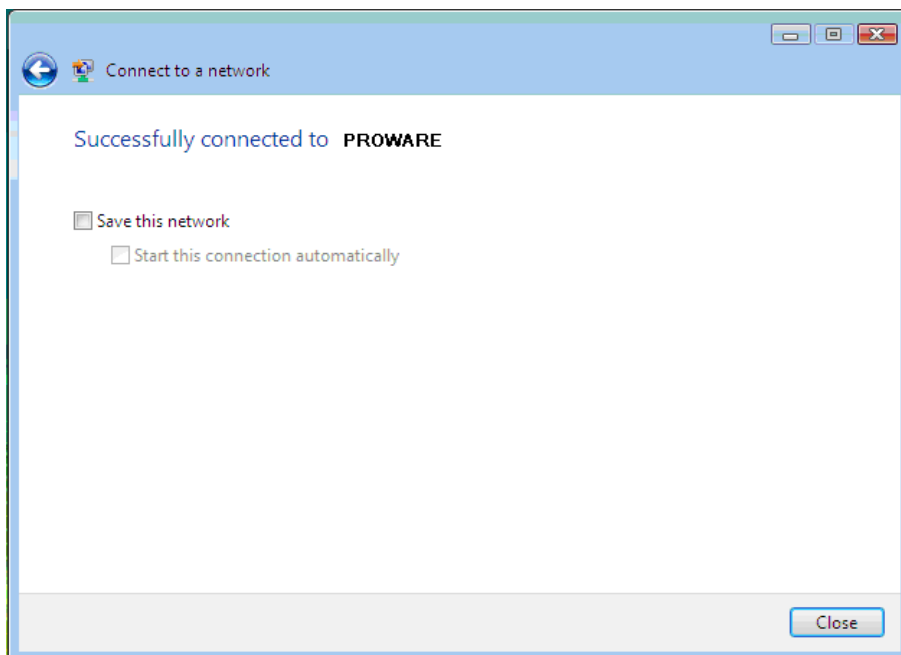


Figure 3-1848

Chapter 4 WPS configuration

WPS function allows you to add a new wireless device to an existing network quickly.

If the wireless card supports Wi-Fi Protected Setup (WPS), you can establish a wireless connection between wireless card and router using either Push Button Configuration (PBC) method or PIN method.

First, the WPS software should be installed. Insert the Resource CD into your CD-ROM drive, Click the Start button and choose Run. In the field that appears, enter F:\WPS\WPS.exe (Presume "F" is the letter of your CD-ROM drive) and click OK, then [Figure 4-1](#)~~Figure 5-1~~ will appear.

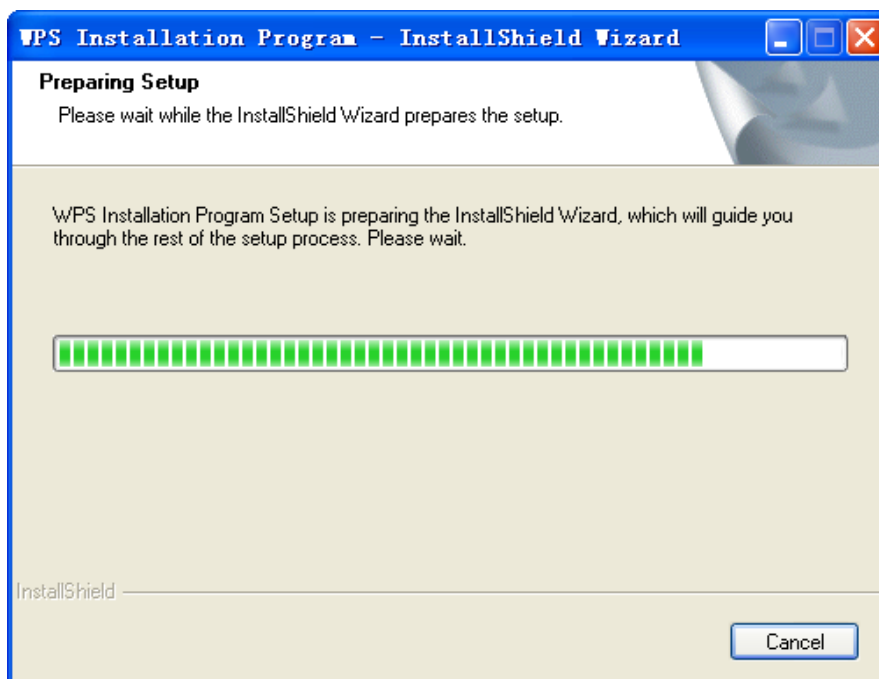


Figure 4-1

Then, please follow the clue of the Operation System to complete the WPS installation. After that, WPS function can be enabled. Here we will introduce two ways to configure the WPS (For the configuration of WPS, here takes the Wireless Router of our company for example).

4.1 PBC (Push Button Configuration) method

1. Firstly, press the WPS button of the Router. There are two ways:
 - 1) Press the WPS button directly on the front panel of the Router shown in [Figure 4-2](#)~~Figure 5-2~~.

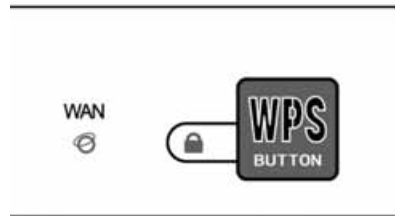


Figure 4-22

- 2) Open the Router's Web-based Utility and click **WPS** link on the left of the main menu. Then ~~Figure 4-3~~~~Figure 5-3~~ will appear. Click **Add device**, then you can see ~~Figure 4-4~~~~Figure 5-4~~. Select **Press the button of the new device in two minutes** and click **Connect**. After that, wait for a minute until the screen shows that the devices **connect successfully**.

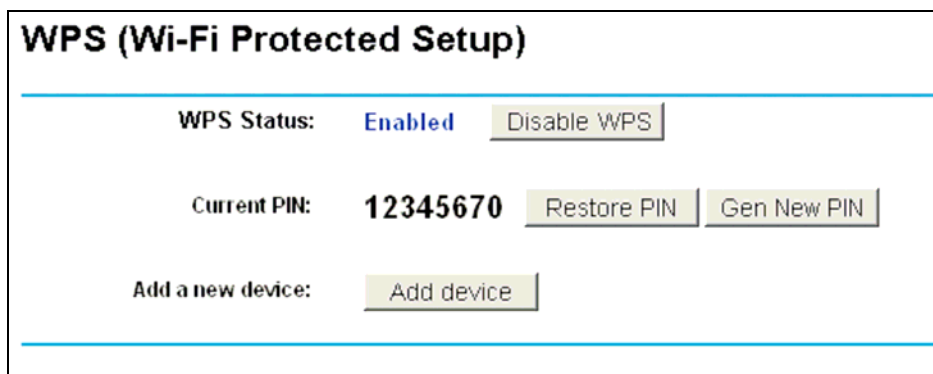


Figure 4-33

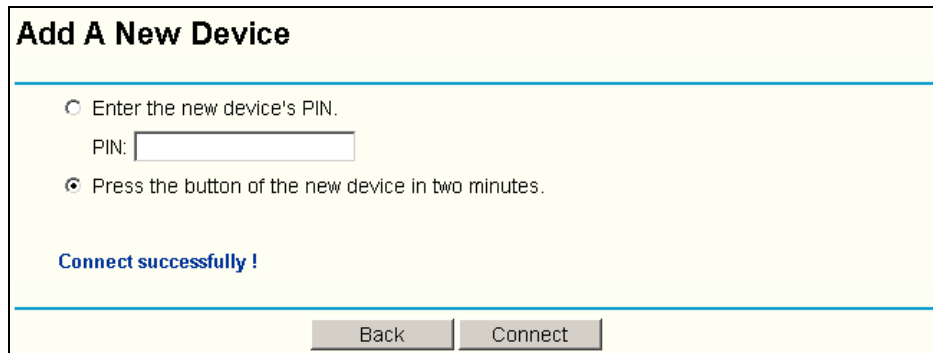



Figure 4-44

2. Secondly, Double click the icon  on the desktop to open the WPS Utility and then you can see the welcome screen shown as ~~Figure 4-5~~~~Figure 5-5~~. Click **Next** to continue.

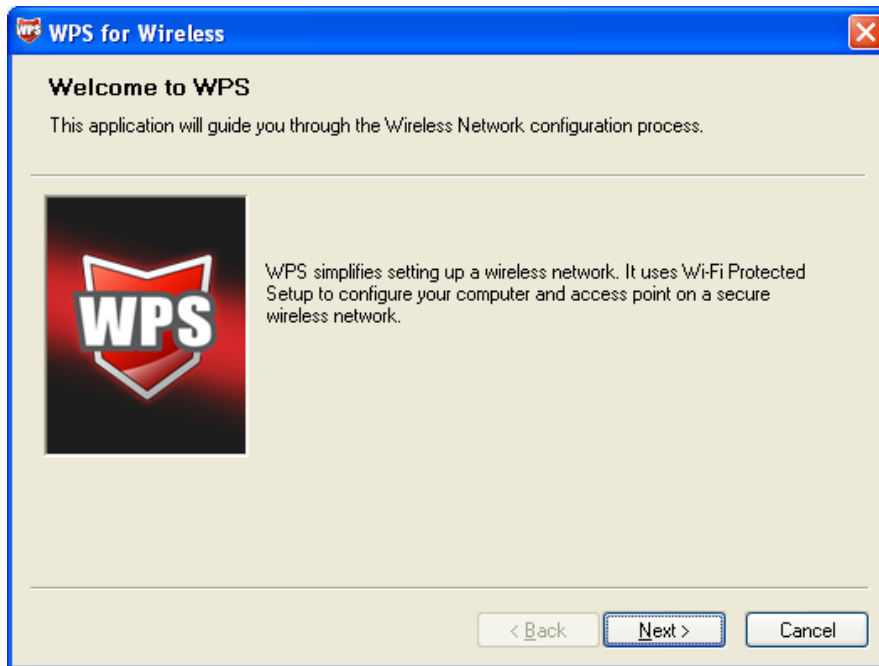


Figure 4-55

3. Thirdly, select **Push the button on my access point** in the next screen and click **Next**.

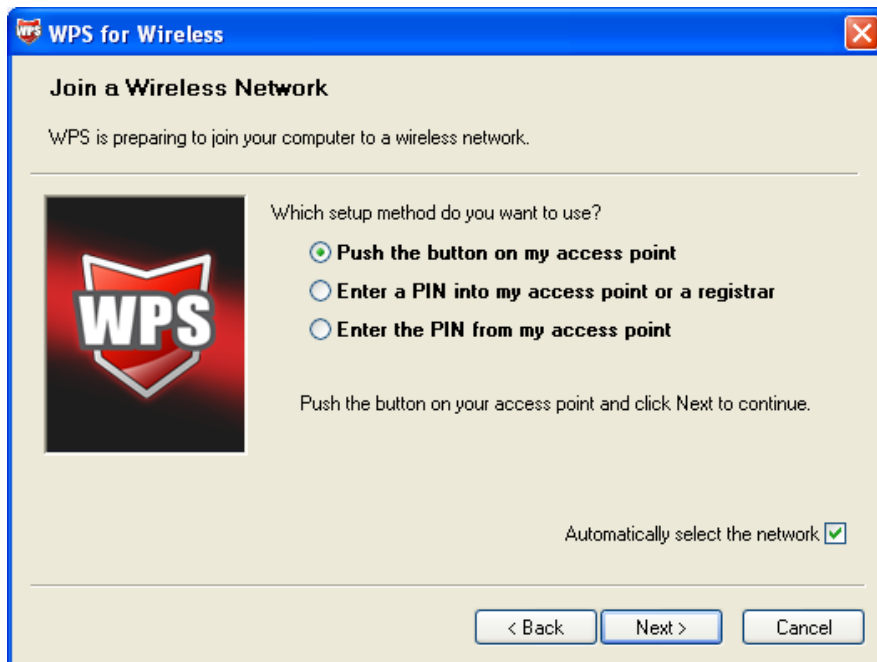


Figure 4-66

4. Then wait a minute until ~~Figure 4-7~~~~Figure 5-7~~ appears. Click **Finish** to complete the WPS configuration.



Figure 4-77

4.2 PIN method

There are two ways to configure the WPS by **PIN method**:

- 1) Enter a PIN into your AP device
- 2) Enter the PIN from your AP device.

Following are the detailed configuration procedure of each way.

4.2.1 Enter a PIN into your AP device


1. Double click the icon  on the desktop to open the WPS Utility and then you can see the welcome screen shown as [Figure 4-5](#)~~Figure 5-5~~. Click **Next** to continue. Then [Figure 4-8](#)~~Figure 5-8~~ will appear. Select the second option and you will see a PIN value displayed in the screen. Remember it and Click **Next**.



Figure 4-88

- Open the Router's Web-based Utility and click **WPS** link on the left of the main menu. Then [Figure 4-3](#)[Figure 5-3](#) will appear. Click **Add device**, then you can see [Figure 4-9](#)[Figure 5-9](#). Select **Enter the new device's PIN** and enter the PIN value shown in [Figure 4-8](#)[Figure 5-8](#), click **Connect**. After that, wait for a minute until the following screens prompt that the devices connect successfully.

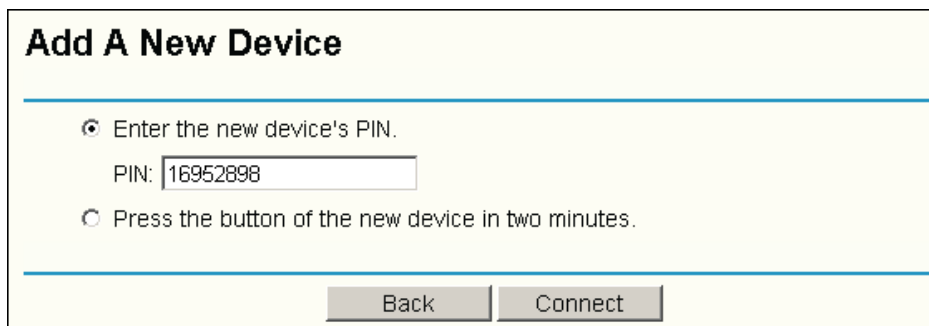


Figure 4-99

4.2.2 Enter the PIN from your AP device

- Open the WPS Utility and you will see [Figure 4-5](#)[Figure 5-5](#). Click **Next** to continue. Then [Figure 4-10](#)[Figure 5-10](#) will appear. Select the third option and enter the PIN value which is labeled on the bottom of the Router. Click **Next**.

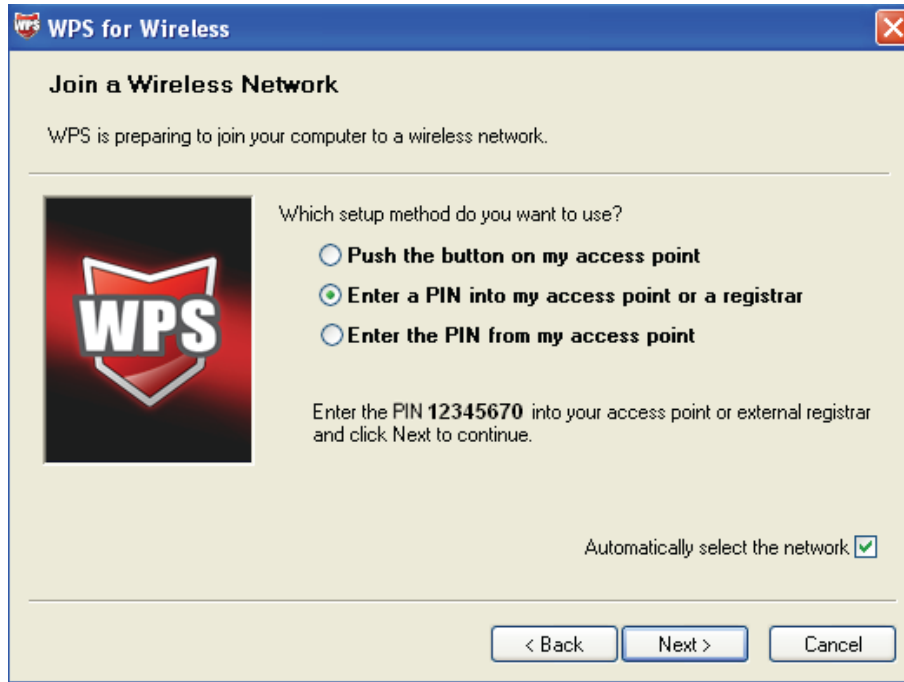



Figure 4-1040

3. When [Figure 4-7](#)~~Figure 5-7~~ appears, the WPS configuration is complete.

 **Note:** If you generate a new PIN code for your router, please enter the new one instead.

Appendix A: Specifications

Normal	
Interface	32 bit CardBus Interface
Standards	IEEE802.11n (draft); IEEE802.11g; IEEE802.11b;
Operating System	Windows 2000, XP, Vista
Throughput	300Mbps (Maximal)
Radio Data Rate	27/54/81/108/162/216/243/270Mbps 13.5/27/40.5/54/81/108/121.5/135Mbps 13/26/39/52/78/104/117/130Mbps 6.5/13/19.5/26/39/52/58.5/65Mbps 1/2/5.5/11Mbps (Auto Rate Sensing)
Modulation	11b: CCK, QPSK, BPSK; 11g: OFDM; 11n: QPSK, BPSK, 16-QAM, 64-QAM
Media Access Protocol	CSMA/CA with ACK
Data Security	WPA/WPA2; 64/128/152-bit WEP; TKIP/AES
Frequency	2.4 ~ 2.4835GHz
Spread Spectrum	Direct Sequence Spread Spectrum (DSSS)
Safety & Emissions	FCC, CE

Environmental and Physical	
Operating Temp.	0°C ~ 40°C (32°F ~ 104°F)
Storage Temp.	-40°C ~ 70°C (-40°F ~ 158°F)
Humidity	10% ~ 95% RH, Non-condensing

Appendix B: Glossary

- **802.11b** - The 802.11b standard specifies a wireless product networking at 11 Mbps using direct-sequence spread-spectrum (DSSS) technology and operating in the unlicensed radio spectrum at 2.4GHz, and WEP encryption for security. 802.11b networks are also referred to as Wi-Fi networks.
- **802.11g** - specification for wireless networking at 54 Mbps using direct-sequence spread-spectrum (DSSS) technology, using OFDM modulation and operating in the unlicensed radio spectrum at 2.4GHz, and backward compatibility with IEEE 802.11b devices, and WEP encryption for security.
- **802.11n** - 802.11n builds upon previous 802.11 standards by adding MIMO (multiple-input multiple-output). MIMO uses multiple transmitter and receiver antennas to allow for increased data throughput via spatial multiplexing and increased range by exploiting the spatial diversity, perhaps through coding schemes like Alamouti coding. The Enhanced Wireless Consortium (EWC)^[3] was formed to help accelerate the IEEE 802.11n development process and promote a technology specification for interoperability of next-generation wireless local area networking (WLAN) products.
- **Ad-hoc Network** - An ad-hoc network is a group of computers, each with a Wireless Adapter, connected as an independent 802.11 wireless LAN. Ad-hoc wireless computers operate on a peer-to-peer basis, communicating directly with each other without the use of an access point. Ad-hoc mode is also referred to as an Independent Basic Service Set (IBSS) or as peer-to-peer mode, and is useful at a departmental scale or SOHO operation.
- **DSSS - (Direct-Sequence Spread Spectrum)** - DSSS generates a redundant bit pattern for all data transmitted. This bit pattern is called a chip (or chipping code). Even if one or more bits in the chip are damaged during transmission, statistical techniques embedded in the receiver can recover the original data without the need of retransmission. To an unintended receiver, DSSS appears as low power wideband noise and is rejected (ignored) by most narrowband receivers. However, to an intended receiver (i.e. another wireless LAN endpoint), the DSSS signal is recognized as the only valid signal, and interference is inherently rejected (ignored).
- **FHSS - (Frequency Hopping Spread Spectrum)** - FHSS continuously changes (hops) the carrier frequency of a conventional carrier several times per second according to a pseudo-random set of channels. Because a fixed frequency is not used, and only the transmitter and receiver know the hop patterns, interception of FHSS is extremely difficult.
- **Infrastructure Network** - An infrastructure network is a group of computers or other devices, each with a Wireless Adapter, connected as an 802.11 wireless LAN. In infrastructure mode, the wireless devices communicate with each other and to a wired network by first going through an access point. An infrastructure wireless network connected to a wired network is referred to as a Basic Service Set (BSS). A set of two or more BSS in a single network is referred to as an Extended Service Set (ESS). Infrastructure mode is useful at a corporation scale, or when it is necessary to connect the wired and wireless networks.
- **Spread Spectrum** - Spread Spectrum technology is a wideband radio frequency technique

developed by the military for use in reliable, secure, mission-critical communications systems. It is designed to trade off bandwidth efficiency for reliability, integrity, and security. In other words, more bandwidth is consumed than in the case of narrowband transmission, but the trade off produces a signal that is, in effect, louder and thus easier to detect, provided that the receiver knows the parameters of the spread-spectrum signal being broadcast. If a receiver is not tuned to the right frequency, a spread-spectrum signal looks like background noise. There are two main alternatives, Direct Sequence Spread Spectrum (DSSS) and Frequency Hopping Spread Spectrum (FHSS).

- **SSID** - A **S**ervice **S**et **I**dentification is a thirty-two character (maximum) alphanumeric key identifying a wireless local area network. For the wireless devices in a network to communicate with each other, all devices must be configured with the same SSID. This is typically the configuration parameter for a wireless PC card. It corresponds to the ESSID in the wireless Access Point and to the wireless network name. See *also* Wireless Network Name and ESSID.
- **WEP** - (**W**ired **E**quivalent **P**rivacy) - A data privacy mechanism based on a 64-bit or 128-bit or 152-bit shared key algorithm, as described in the IEEE 802.11 standard. To gain access to a WEP network, you must know the key. The key is a string of characters that you create. When using WEP, you must determine the level of encryption. The type of encryption determines the key length. 128-bit encryption requires a longer key than 64-bit encryption. Keys are defined by entering in a string in HEX (hexadecimal - using characters 0-9, A-F) or ASCII (American Standard Code for Information Interchange – alphanumeric characters) format. ASCII format is provided so you can enter a string that is easier to remember. The ASCII string is converted to HEX for use over the network. Four keys can be defined so that you can change keys easily.
- **Wi-Fi** - A trade name for the 802.11b wireless networking standard, given by the Wireless Ethernet Compatibility Alliance (WECA, see <http://www.wi-fi.net>), an industry standards group promoting interoperability among 802.11b devices.
- **WLAN** - (**W**ireless **L**ocal **A**rea **N**etwork) - A group of computers and associated devices communicate with each other wirelessly, which network serving users are limited in a local area.
- **WPA** - (**W**i-Fi **P**rotected **A**ccess) - A wireless security protocol uses TKIP (Temporal Key Integrity Protocol) encryption, which can be used in conjunction with a RADIUS server.